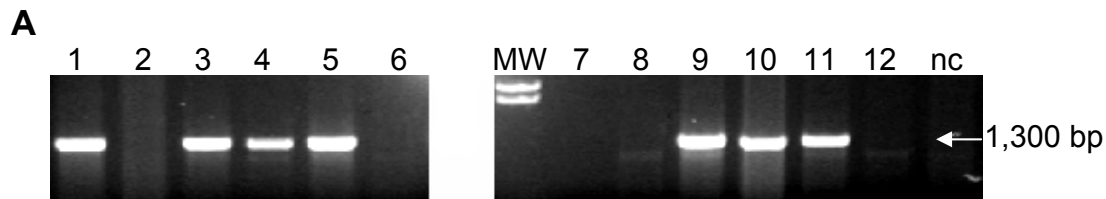


Merkel Cell Polyomavirus Strains in Patients with Merkel Cell Carcinoma

Technical Appendix



B

VP1

	1	22	181	185	288	316	362	366	386	422	423
MCC339		P	D	Q	D	R	Q	D	P	E	
MCC350		-	-	E	H	I	-	N	-	Q	
MKL-1		-	-	E	-	-	-	-	-	-	
TKS		S	-	E	-	-	-	-	L	-	
MKT-21		-	-	E	-	-	-	-	-	-	
MKT-23		-	-	-	-	-	-	-	-	-	
MKT-26		-	G	E	-	-	P	-	-	-	
MKT-31		-	-	E	-	-	-	-	-	-	
MKT-32		-	-	E	-	-	-	-	-	-	
MKT-33		-	-	E	-	-	-	-	-	-	

C

Regulatory

MCC339	5013	AAAAAAAGTTGAGTTAAGAGTCTT	5036
MCC350		AAAAAAAGT.....TAAGAGTCTT	
MKL-1		AAAAAAAGT.....TAAGAGTCTT	
TKS		AAAAAAAGTTGAGTTAAGAGTCTT	
MKT-21		AAAAAAAGTTGAGTTAAGAGTCTT	
MKT-22		AAAAAAAGT.....TAAGAGTCTT	
MKT-23		AAAAAAAGTTGAGTTAAGAGTCTT	
MKT-26		AAAAAAAGT.....TAAGAGTCTT	
MKT-31		AAAAAAAGT.....TAAGAGTCTT	
MKT-32		AAAAAAAGT.....TAAGAGTCTT	
MKT-33		AAAAAAAGT.....TAAGAGTCTT	

Technical Appendix Figure. PCR amplification of viral protein (VP) 1 gene in frozen samples. A) Presence of amplicons of $\approx 1,300$ bp in 7 of 12 patients. MW, molecular weight marker; nc, negative control. B) Alignment of VP1 protein amino acid sequences of Merkel cell polyomavirus (MCPyV) isolated from 6 French isolates in comparison with the MCC339 and MCC350 US strains, the MKL-1 Swedish strain (2,10), and the TKS Japanese isolate. Sequences were aligned on the amino acid sequence of the MCC339 strain; a hyphen indicates identity. C) Presence or absence of a 5-nt deletion within the regulatory region of MCPyV in 7 isolates from France.