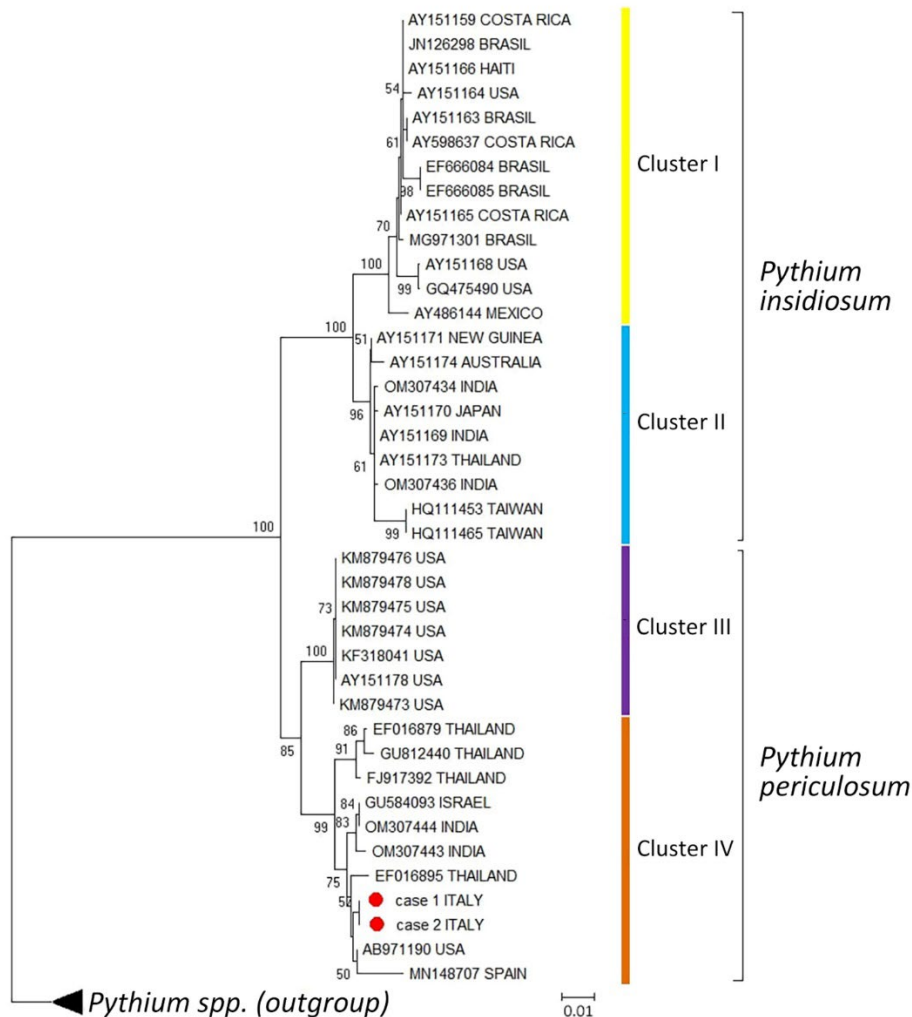


EID cannot ensure accessibility for supplementary materials supplied by authors. Readers who have difficulty accessing supplementary content should contact the authors for assistance.

# Cutaneous Pythiosis in 2 Dogs, Italy

## Appendix



**Appendix Figure.** Phylogenetic analysis of rDNA internal transcribed spacer sequences from isolates collected from cutaneous pythiosis lesions from 2 dogs in Italy. Tree was constructed by using the neighbor-joining method. Sequences obtained from lesion biopsies from the 2 dogs in Italy are highlighted by red circles. Sequences for comparison were obtained from GenBank and include those from isolates belonging to the 4 clusters recognized within the *Pythium insidiosum* complex. Scale bar indicates nucleotide substitutions per site.