

## Genome Analysis of Triploid Hybrid *Leishmania* Parasite from the Neotropics

Frederik Van den Broeck, Senne Heeren, Ilse Maes, Mandy Sanders, James A. Cotton,<sup>1</sup> Elisa Cupolillo, Eugenia Alvarez, Lineth Garcia, Maureen Tasia, Alice Marneffe, Jean-Claude Dujardin, Gert Van der Auwera

Author affiliations: Katholieke Universiteit Leuven, Leuven, Belgium (F. Van den Broeck, S. Heeren); Institute of Tropical Medicine, Antwerp, Belgium (F. Van den Broeck, S. Heeren, I. Maes, J.-C. Dujardin, G. Van der Auwera); Wellcome Sanger Institute, Hinxton, UK (M. Sanders, J.A. Cotton); Instituto Oswaldo Cruz–Fiocruz, Rio de Janeiro, Brazil (E. Cupolillo); Cayetano Heredia University, Lima, Peru (E. Alvarez); Universidad Mayor de San Simon, Cochabamba, Bolivia (L. Garcia); Centre Hospitalier Universitaire St. Pierre, Brussels, Belgium (M. Tasia, A. Marneffe)

DOI: <https://doi.org/10.3201/eid2905.221456>

We discovered a hybrid *Leishmania* parasite in Costa Rica that is genetically similar to hybrids from Panama. Genome analyses demonstrated the hybrid is triploid and identified *L. braziliensis* and *L. guyanensis*-related strains as parents. Our findings highlight the existence of poorly sampled *Leishmania* (*Viannia*) variants infectious to humans.

*Leishmania* are intracellular protozoan parasites that cause the vectorborne disease leishmaniasis, which occurs in ≈88 countries (1). Human infection can result in 2 main forms of disease, cutaneous and visceral leishmaniasis, and different *Leishmania* species cause diverse clinical manifestations and sequelae (1). Correct species typing is thus required to clinically manage leishmaniasis (2).

In August 2020, a patient returning from Costa Rica sought care at the Hospital St. Pierre (Brussels, Belgium) with a single, well-demarcated, ulcerated erythematous plaque on the left flank indicative of cutaneous leishmaniasis. Molecular diagnosis confirmed the presence of *Leishmania* parasites on the basis of 18S ribosomal DNA (3). A 1,245-bp fragment of the multicopy heat-shock protein 70 gene (*hsp70*) was sequenced for species typing (4). This sequencing revealed an atypical sequence related to both the *L. guyanensis* and *L. braziliensis* species that showed sequence variation across copies at 10 positions, suggesting either a mixed infection or hybrid parasite. Despite the atypical nature of the infecting species, the patient had good therapeutic

response after 5 intralesional injections with meglumine antimoniate (Glucantime, Sanofi, <https://www.sanofi.com>), leaving only a slightly hyperpigmented scar. The clinical sample was cultured in vitro (referred to as MHOM/CR/2020/StPierre) and subjected to HSP70 typing (4) and whole-genome sequencing (5).

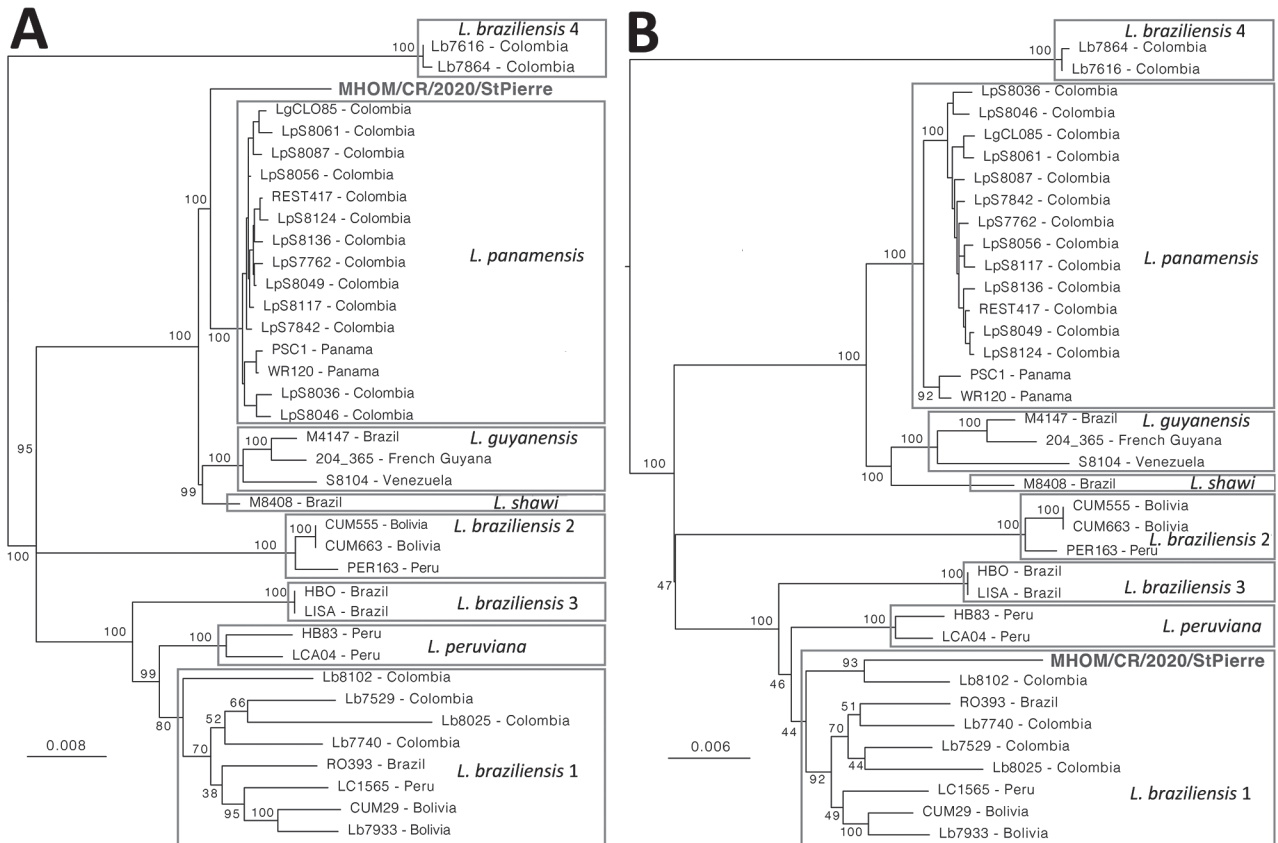
Compared with results for the clinical sample, the consensus sequence of the *hsp70* locus in the cultured isolate revealed sequence variation in 1 extra site, bringing the total to 11 (Appendix 1, <https://wwwnc.cdc.gov/EID/article/29/5/22-1456-App1.pdf>). Of those sites, 10 were shared with 6 cutaneous leishmaniasis strains described from Panama (6). Comparison with all available *Leishmania hsp70* sequences from GenBank (Appendix 1) revealed 2 monophyletic groups as the possible origin of the different *hsp70* copies in the Costa Rica sequence: first, a subgroup of the *L. guyanensis* species complex found in Ecuador, Panama, and Colombia; and second, a subgroup of the *L. braziliensis* species complex described from Panama, Guatemala, and Brazil. Even though such analysis is biased by available sequences and the use of a single chromosomal locus, the geography of the hypothetical parents is compatible with Costa Rica. To further investigate the nature of the Costa Rica isolate, we resorted to genome analysis.

We identified 125,632 single-nucleotide polymorphisms (SNPs) within the sample from Costa Rica after mapping genomic sequences against the *L. braziliensis* M2904 reference genome (5) (Appendix 2, <https://wwwnc.cdc.gov/EID/article/29/5/22-1456-App2.pdf>). This total included 21,168 homozygous SNPs (both haplotypes were different from M2904) and 104,464 heterozygous SNPs (one haplotype was similar to M2904 and the other different). Chromosomes 1 and 11, the first 140 kb of chromosome 20, and the last 60 kb of chromosome 27 were highly homozygous, almost completely lacking in heterozygous variants, whereas most variants in the rest of the genome were heterozygous (Appendix 2). This observation of a largely heterozygous genome that is interrupted by homozygous stretches strongly suggests that the isolate is a hybrid parasite, rather than the result of a mixed infection (7).

We investigated chromosome copy numbers by using the distribution of allelic read depth frequencies at heterozygous sites (7), which should be centered around 0.5 in diploid organisms (both alleles represented equally). However, we discovered a bimodal distribution with modes 0.33 and 0.67 (Appendix 2), suggesting that the hybrid is triploid (7).

We analyzed the genomic ancestry of the hybrid compared with 40 genomes of 7 *Leishmania* (*Viannia*) species (Appendix 2) using phylogenies based on ge-

<sup>1</sup>Current affiliation: Wellcome Center for Integrative Parasitology, University of Glasgow, Glasgow, Scotland, UK.



**Figure.** Midpoint rooted maximum-likelihood phylogenetic trees based on single-nucleotide polymorphisms called in chromosome 1 and the first 140kb of the telomeric region of chromosome 20 of a hybrid *Leishmania* parasite from Costa Rica. For each strain, sequences were composed based on concatenated single-nucleotide polymorphisms that were each coded by 2 base pairs, after which invariant sites were removed, resulting in 2,382 bp sequences for chromosome 1 and 3,015 bp sequences for chromosome 20. Consensus phylogenetic trees were generated from 1,000 bootstrap trees using IQ-TREE (<http://www.iqtree.org>) with 37 taxa (excluding *L. naiffi* and *L. lainsoni* strains) under the transversion with empirical base frequencies, ascertainment bias correction, and discrete gamma with 4 rate categories substitution model, which was the best-fit model revealed by ModelFinder as implemented in IQTREE. Branch support values are presented near each node following 1,000 bootstrap replicates; bootstrap values within the clade containing *L. panamensis* strains were omitted for clarity reasons. Scale bar indicates number of substitutions per site. Appendix 2 (<https://wwwnc.cdc.gov/EID/article/29/5/22-1456-App2.pdf>) includes a description of the *L. braziliensis* 1–4 lineages.

nomic regions that were homozygous in the hybrid (where both haplotypes originate from the same parental species). In the chromosome 20 phylogeny, the Costa Rica hybrid clusters with *L. braziliensis* 1 strain Lb8102 from Colombia (Figure; Appendix 2 Figure 8), which could be close to one of the parental strains. The ancestry of the other parental genome remains unclear, because in the chromosome 1 phylogeny it clusters with *L. panamensis* strains from Colombia and Panama (Figure), even though it is also tightly linked with a cluster of *L. guyanensis* strains from Venezuela, Brazil, and French Guiana in the mitochondrial maxicircle phylogeny (Appendix 2 Figures 3, 9). We could not resolve the geographic origin of the 2 parents in greater detail because of the lack of available *Leishmania* (*Viannia*) genomes.

Our study provides a detailed genomic description of a hybrid between the *L. braziliensis* and the *L. guyanensis* species complexes. The first report of such hybrids in Central America dates back to the early 1990s, concerning putative *L. braziliensis*–*L. panamensis* hybrids from the north of Nicaragua (8). Those hybrids were reported again in 2021 in Panama (6). Further, parasites with signatures from both *L. braziliensis* and *L. guyanensis* relatives have been described in South America, more specifically from Ecuador, Peru, Brazil, and Venezuela (9,10). Together with our report from Costa Rica, these reports point to a widespread circulation in the Neotropical region of recombinant strains, the epidemiology and clinical significance of which remain elusive.

### Acknowledgments

We thank Pieter Monsieurs for help with generating whole-genome sequence data and Isabel Micalessi and Lara Balcaen for molecular diagnosis of the case.

Genomic sequence reads of MHOM/CR/2020/StPierre are available on the European Nucleotide Archive (<https://www.ebi.ac.uk/ena>) under accession no. PRJNA881292. The *hsp70* sequence is available from GenBank under accession no. OQ200658.

F.V.D.B. and S.H. acknowledge support from the Research Foundation Flanders (grant nos. 1226120N and G092921N).

### About the Author

Dr. Van den Broeck is a researcher specializing in genetics and population genomics of eukaryote parasites, particularly parasites that cause neglected tropical diseases. He has contributed multiple research papers investigating the complex hybrid ancestry of protozoan parasites, such as *Trypanosoma cruzi* (agent of Chagas disease) and *Leishmania braziliensis* (agent of cutaneous leishmaniasis).

### References

1. Torres-Guerrero E, Quintanilla-Cedillo MR, Ruiz-Esmenjaud J, Arenas R. Leishmaniasis: a review. *F1000 Res.* 2017;6:750. <https://doi.org/10.12688/f1000research.11120.1>
2. Pan American Health Organization. Guideline for the treatment of leishmaniasis in the Americas. 2nd ed. Washington: The Organization; 2022.
3. van Griensven J, van Henten S, Mengesha B, Kassa M, Adem E, Endris Seid M, et al. Longitudinal evaluation of asymptomatic *Leishmania* infection in HIV-infected individuals in North-West Ethiopia: a pilot study. *PLoS Negl Trop Dis.* 2019;13:e0007765. <https://doi.org/10.1371/journal.pntd.0007765>
4. Van der Auwera G, Maes I, De Doncker S, Ravel C, Cnops L, Van Esbroeck M, et al. Heat-shock protein 70 gene sequencing for *Leishmania* species typing in European tropical infectious disease clinics. *Euro Surveill.* 2013;18:20543. <https://doi.org/10.2807/1560-7917.ES2013.18.30.20543>
5. Van den Broeck F, Savill NJ, Imamura H, Sanders M, Maes I, Cooper S, et al. Ecological divergence and hybridization of Neotropical *Leishmania* parasites. *Proc Natl Acad Sci U S A.* 2020;117:25159–68. <https://doi.org/10.1073/pnas.1920136117>
6. Miranda ADC, González KA, Samudio F, Pineda VJ, Calzada JE, Capitan-Barrios Z, et al. Molecular identification of parasites causing cutaneous leishmaniasis in Panama. *Am J Trop Med Hyg.* 2021;104:1326–34. <https://doi.org/10.4269/ajtmh.20-1336>
7. Tihon E, Imamura H, Dujardin JC, Van Den Abbeele J, Van den Broeck F. Discovery and genomic analyses of hybridization between divergent lineages of *Trypanosoma congolense*, causative agent of Animal African Trypanosomiasis. *Mol Ecol.* 2017;26:6524–38. <https://doi.org/10.1111/mec.14271>
8. Belli AA, Miles MA, Kelly JM. A putative *Leishmania panamensis/Leishmania braziliensis* hybrid is a causative agent of human cutaneous leishmaniasis in Nicaragua. *Parasitology.* 1994;109:435–42. <https://doi.org/10.1017/S0031182000080689>
9. Brito MEF, Andrade MS, Mendonça MG, Silva CJ, Almeida EL, Lima BS, et al. Species diversity of *Leishmania (Viannia)* parasites circulating in an endemic area for cutaneous leishmaniasis located in the Atlantic rainforest region of northeastern Brazil. *Trop Med Int Health.* 2009;14:1278–86. <https://doi.org/10.1111/j.1365-3156.2009.02361.x>
10. Tabbabi A, Cáceres AG, Bustamante Chauca TP, Seki C, Choochartpong Y, Mizushima D, et al. Nuclear and kinetoplast DNA analyses reveal genetically complex *Leishmania* strains with hybrid and mito-nuclear discordance in Peru. *PLoS Negl Trop Dis.* 2020;14:e0008797. <https://doi.org/10.1371/journal.pntd.0008797>

Address for correspondence: Frederik Van den Broeck or Gert Van der Auwera, Institute of Tropical Medicine, Nationalestraat 155, 2000 Antwerp, Belgium; email: [fvandenbroeck@gmail.com](mailto:fvandenbroeck@gmail.com) or [gvdauwera@itg.be](mailto:gvdauwera@itg.be)

## New Genotype of *Coxiella burnetii* Causing Epizootic Q Fever Outbreak in Rodents, Northern Senegal

Joa Mangombi-Pambou, Laurent Granjon, Clément Labarrere, Mamadou Kane, Youssoupha Niang, Pierre-Edouard Fournier, Jérémy Delerce, Florence Fenollar, Oleg Mediannikov

Author affiliations: Centre Interdisciplinaire de Recherches Médicales de Franceville, Franceville, Gabon (J. Mangombi-Pambou); Aix-Marseille University, Marseille, France (J. Mangombi-Pambou, C. Labarrere, P.-E. Fournier, J. Delerce, F. Fenollar, O. Mediannikov); University Hospital Institute Méditerranée Infection, Marseille (J. Mangombi-Pambou, C. Labarrere, P.-E. Fournier, F. Fenollar, O. Mediannikov); Centre de Biologie pour la Gestion des Populations, Montpellier, France (L. Granjon); Biologie des Populations Animales Sahelo-Soudaniennes, Dakar, Senegal (M. Kane, Y. Niang)

DOI: <https://doi.org/10.3201/eid2905.221034>

Article DOI: <https://doi.org/10.3201/eid2905.221456>

*EID cannot ensure accessibility for supplementary materials supplied by authors. Readers who have difficulty accessing supplementary content should contact the authors for assistance.*

# Genome Analysis of Triploid Hybrid *Leishmania* Parasite from Neotropics

## Appendix 1

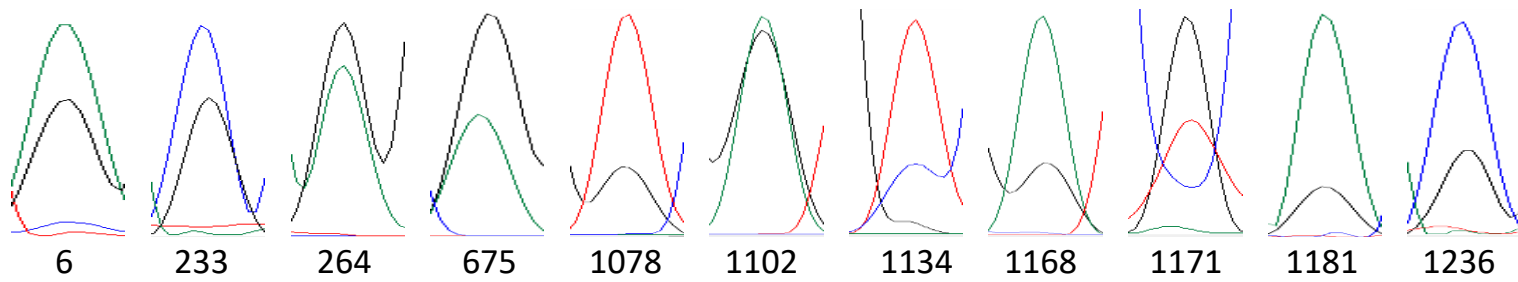
The following pages provide further details from the *hsp70* analysis of a hybrid *L. guyanensis* complex–*L. braziliensis* complex strain isolated in 2020 from Costa Rica.

# Heat-shock protein 70 gene analysis of isolate MHOM/CR/2020/StPierre

- Returning cutaneous leishmaniasis patient from Costa Rica.
- Partial heat-shock protein 70 gene (*hsp70*) sequence (1245 bp) of the isolated parasite contained **11 positions** with more than 1 nucleotide present, resulting from sequence variation between the multiple copies of the tandemly repeated gene (GenBank accession OQ200658):

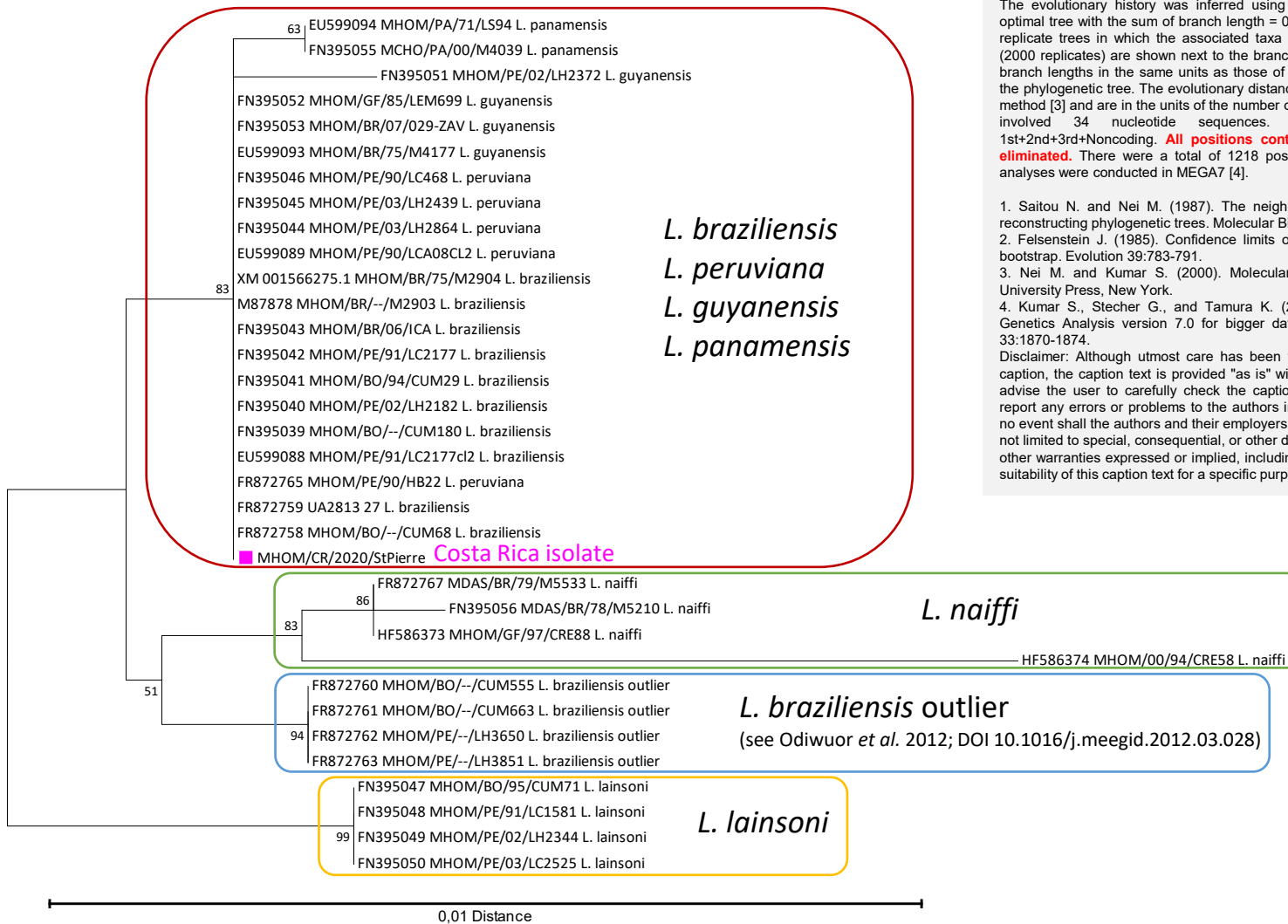
```

GGCTRAGAGG TGCTGCGCAT CATCAACGAG CCAACAGCGG CGGCCATCGC GTACGGCCTG GACAAGGGCG ACGACGGCAA GGAGCGCAAC GTGCTCATCT 100
TCGACCTTGG CGGCGGCACG TTCGATGTGA CGCTGCTGAC GATCGACGGC GGCATCTTCG AGGTGAAGGC GACGAACGGT GACACGCACC TTGGCGGCGA 200
GGACTTTGAC AACCGCCTCG TCACGTTCTT CASGAGGAG TTCAAGCGCA AGAACAAGGG TAARAGACCTT TCGTCGAGCC ACCGCGCGCT GCGCCGCTG 300
CGCACGGCGT GCGAGCGCGC GAAGCGCACG CTGTCTGCCG CGACGCAGGC GACGATCGAG ATCGACGCGC TGTTGCACAA CGTCGACTTC CAGGCCAACA 400
TCACGCGCGC GCGCTTCGAG GAGCTGTGCG GCGACCTGTT CCGCAGCACA ATGCAGCCGG TGGAGCGCGT GCTGCAGGAC GCGAAGATGG ACAAGCGCTC 500
CGTGACGAC GTGGTGCTGG TGGGCGGGTC GACGCGCATC CCGAAGGTGC AGTCCCTCGT GTCGGACTTC TTCGGCGGCA AGGAGCTGAA CAAGAGCATC 600
AACCCCGACG AGGCTGTGCG GTACGGCGCT GCGGTGCAGG CGTTCATCCT GACGGGCGGC AAGAGCAAGC AGACRAGGG CCTGCTGCTG CTGGATGTGA 700
CGCCGCTGAC CCTGGGCATT GAGACGCGCG GCGGCGTGAT GACGCGCTG ATCAAGCGCA ACACGACGAT CCCGACCAAG AAGAGCCAGA TCTTCTCGAC 800
GTACGCGGAC AACAGCCCG GCGTGCACAT CCAGGTCTTC GAGGGCGAGC GCGCGATGAC GAAGGACTGC CACCTGCTGG GCACGTTCTGA CTTGTCCGGC 900
ATCCCGCCAG CGCCGCGCGG CGTGCCGACG ATCGAGGTGA CGTTCGACCT GGACGCGAAC GGCATCCTGA ACGTGTCCGC GGAGGAGAAG GGCACCGGCA 1000
AGCGCAACCA TATCACCATC ACCAACGACA AGGGCCGACT GAGCAAGGAC GAGATCGAGC GCATGGTGAA CGATGCGKCG AAGTACGAGC AGGCCGACAA 1100
GRITGACGCG GAGCGCGTGG AGGCGAAGAA CGGYCTGGAG AACTACGCGT ACTCGATGAA GAACACGRTC KCCGACACGA RCGTGTCCGG CAAGCTGGAG 1200
GAGAGCGACA GGACCGCGCT GAACTCGGCG ATCGASGCGG CGCTG 1245
    
```



Example of sequence electropherogram for each ambiguous position

- Sequence comparison excluding the ambiguous sites from the alignment links the isolate with the *L. guyanensis* and *L. braziliensis* species complexes.



- This indicates either a hybrid strain or mixed infection.

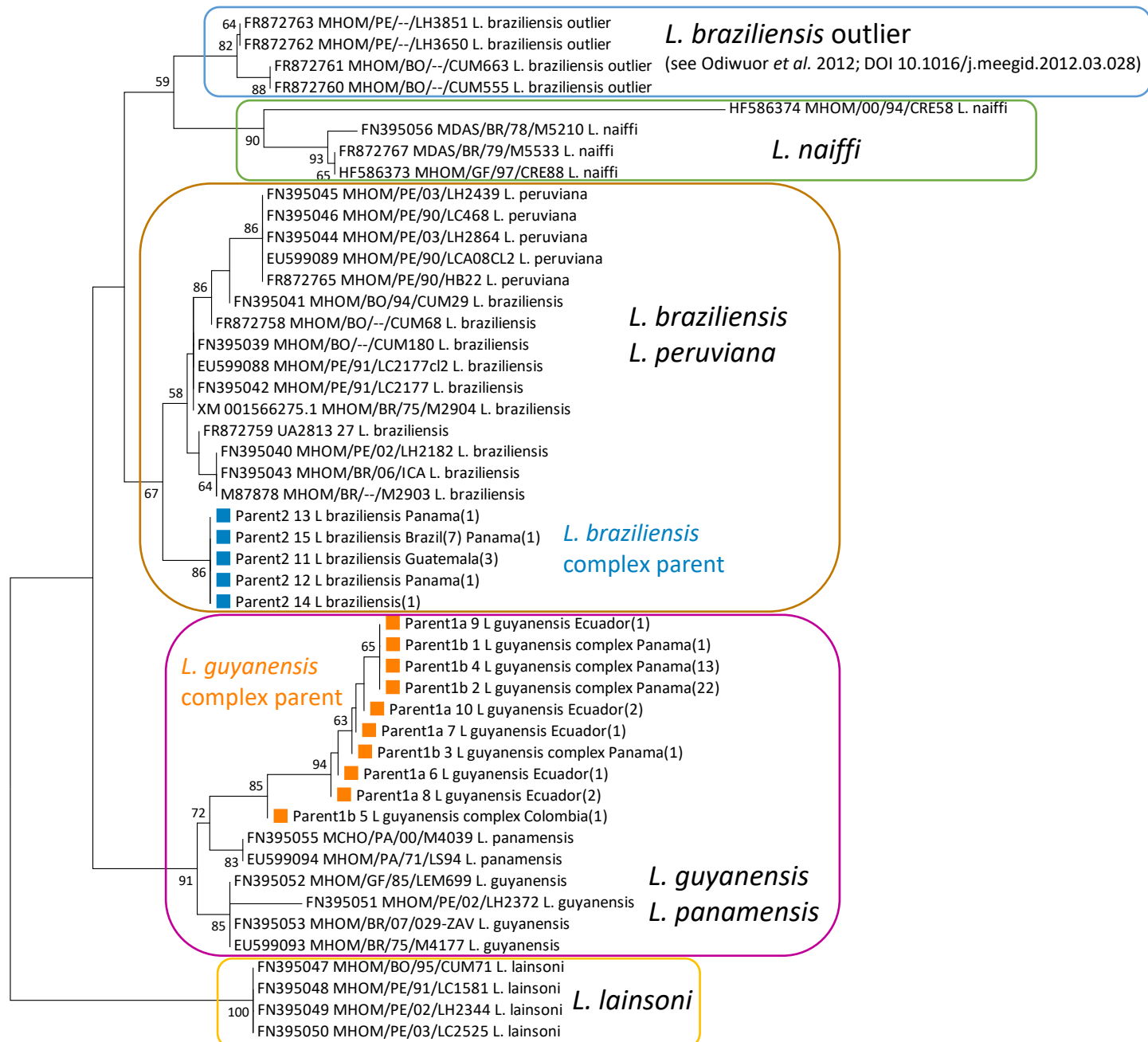


- To identify the parental sequences of the hybrid or the mix, all *hsp70* sequences spanning the full 1245 bp fragment from [GenBank](#) were analyzed (January 31, 2022), supplemented with patient sequences from the Institute of Tropical Medicine (Antwerp, Belgium).
- In the 11 ambiguous positions, several nucleotides were found only in a subset of *L. guyanensis* from Ecuador (further called **parent 1b**), and equally so in an unidentified group of sequences from Panama ([published in Miranda et al. 2021](#)) (**parent 1a**).
- If these sequences are indeed a parent, all other nucleotides in the ambiguous positions need be accounted for by the second parent, leaving only a subgroup of *L. braziliensis* as the second possible parent (called further **parent 2**).

Table: comparison of MHOM/CR/2020/StPierre with putative parental sequences at the 11 ambiguous sites. Identification of the parental sequences: please refer to legend of figure on next page. Number of identical sequences in the analysis is in brackets following sequence descriptions.

Position in partial 1245 bp fragment of <i>hsp70</i> →	6	233	264	675	1078	1102	1134	1168	1171	1181	1236
Position in HSP70 CDS of whole genome →	504	731	762	1173	1576	1600	1632	1666	1669	1679	1734
MHOM/CR/2020/StPierre	R	S	R	R	K	R	Y	R	K	R	S
Parent1b 1 <i>L. guyanensis</i> complex Panama(1)	A	C	G	A	G	G	T	A	G	G	G
Parent1b 2 <i>L. guyanensis</i> complex Panama(22)	A	C	G	A	G	G	T	A	G	G	G
Parent1b 3 <i>L. guyanensis</i> complex Panama(1)	A	C	G	A	G	G	T	A	G	R	G
Parent1b 4 <i>L. guyanensis</i> complex Panama(13)	A	C	G	A	G	G	T	A	G	G	G
Parent1b 5 <i>L. guyanensis</i> complex Colombia(1)	A	C	G	R	K	R	T	A	G	R	S
Parent1a 6 <i>L. guyanensis</i> complex Ecuador(1)	A	C	G	A	G	G	T	A	R	R	G
Parent1a 7 <i>L. guyanensis</i> complex Ecuador(1)	A	C	G	A	G	G	T	A	G	R	G
Parent1a 8 <i>L. guyanensis</i> complex Ecuador(2)	A	C	G	A	G	G	T	A	R	R	G
Parent1a 9 <i>L. guyanensis</i> complex Ecuador(1)	A	C	G	A	G	G	T	A	G	G	G
Parent1a 10 <i>L. guyanensis</i> complex Ecuador(2)	A	C	G	A	G	G	T	A	G	R	G
Parent2 11 <i>L. braziliensis</i> Guatemala(3)	G	G	A	G	T	A	C	G	T	A	C
Parent2 12 <i>L. braziliensis</i> Panama(1)	G	G	A	G	T	A	C	G	T	A	C
Parent2 13 <i>L. braziliensis</i> Panama(1)	G	G	A	G	T	A	C	G	T	A	C
Parent2 14 <i>L. braziliensis</i> (1)	G	G	A	G	T	A	C	G	T	A	C
Parent2 15 <i>L. braziliensis</i> Brazil(7) Panama(1)	G	G	A	G	T	A	C	G	T	A	C

- Not only could the hypothetical parental lines account for all 11 of the ambiguous positions, but conversely, every single one of the 1245 positions in the mix/hybrid showed the nucleotide(s) present in both parents. In other words: all sequence variation in the parents was accounted for in the hybrid/mix sequence.
- Phylogenetic analysis of these hypothetical parental sequences gave the following results:



0.01 Distance

Figure legend: next page



Only 15 unique parental sequences were retained, each of these is identified as follows:

*Parent (1a/1b/2) – unique sequence number (1-15) – species – country of origin (number of identical sequences represented in brackets).*

#### Dendrogram method

The evolutionary history was inferred using the Neighbor-Joining method [1]. The optimal tree with the sum of branch length = 0.04003125 is shown. The percentage of replicate trees in which the associated taxa clustered together in the bootstrap test (2000 replicates) are shown next to the branches when exceeding 50% [2]. The tree is drawn to scale, with branch lengths in the same units as those of the evolutionary distances used to infer the phylogenetic tree. The evolutionary distances were computed using the p-distance method [3] and are in the units of the number of base differences per site. The analysis involved 48 nucleotide sequences. Codon positions included were 1st+2nd+3rd+Noncoding. **All ambiguous positions were removed for each sequence pair.** There were a total of 1245 positions in the final dataset. Evolutionary analyses were conducted in MEGA7 [4].

1. Saitou N. and Nei M. (1987). The neighbor-joining method: A new method for reconstructing phylogenetic trees. *Molecular Biology and Evolution* 4:406-425.
2. Felsenstein J. (1985). Confidence limits on phylogenies: An approach using the bootstrap. *Evolution* 39:783-791.
3. Nei M. and Kumar S. (2000). *Molecular Evolution and Phylogenetics*. Oxford University Press, New York.

4. Kumar S., Stecher G., and Tamura K. (2016). MEGA7: Molecular Evolutionary Genetics Analysis version 7.0 for bigger datasets. *Molecular Biology and Evolution* 33:1870-1874.

Disclaimer: Although utmost care has been taken to ensure the correctness of the caption, the caption text is provided "as is" without any warranty of any kind. Authors advise the user to carefully check the caption prior to its use for any purpose and report any errors or problems to the authors immediately ([www.megasoftware.net](http://www.megasoftware.net)). In no event shall the authors and their employers be liable for any damages, including but not limited to special, consequential, or other damages. Authors specifically disclaim all other warranties expressed or implied, including but not limited to the determination of suitability of this caption text for a specific purpose, use, or application.

#### The following entries are represented by sequences 1-15:

(if from GenBank, description starts with accession number)

##### 1\_L\_guyanensis\_complex\_Panama(1)

KX574009.1:1-1245\_Leishmania\_sp.\_isolate\_PA\_462\_heat\_shock\_protein\_70\_(hsp70)\_gene\_partial\_cds

##### 2\_L\_guyanensis\_complex\_Panama(22)

KX573944.1:1-1245\_Leishmania\_sp.\_isolate\_PA\_026\_heat\_shock\_protein\_70\_(hsp70)\_gene\_partial\_cds

KX573946.1:1-1245\_Leishmania\_sp.\_isolate\_PA\_066\_heat\_shock\_protein\_70\_(hsp70)\_gene\_partial\_cds

KX573947.1:1-1245\_Leishmania\_sp.\_isolate\_PA\_067\_heat\_shock\_protein\_70\_(hsp70)\_gene\_partial\_cds

KX573949.1:1-1245\_Leishmania\_sp.\_isolate\_PA\_073\_heat\_shock\_protein\_70\_(hsp70)\_gene\_partial\_cds

KX573952.1:1-1245\_Leishmania\_sp.\_isolate\_PA\_086\_heat\_shock\_protein\_70\_(hsp70)\_gene\_partial\_cds

KX573953.1:1-1245\_Leishmania\_sp.\_isolate\_PA\_090\_heat\_shock\_protein\_70\_(hsp70)\_gene\_partial\_cds

KX573957.1:1-1245\_Leishmania\_sp.\_isolate\_PA\_108\_heat\_shock\_protein\_70\_(hsp70)\_gene\_partial\_cds

KX573959.1:1-1245\_Leishmania\_sp.\_isolate\_PA\_113\_heat\_shock\_protein\_70\_(hsp70)\_gene\_partial\_cds

KX573961.1:1-1245\_Leishmania\_sp.\_isolate\_PA\_119\_heat\_shock\_protein\_70\_(hsp70)\_gene\_partial\_cds

KX573964.1:1-1245\_Leishmania\_sp.\_isolate\_PA\_131\_heat\_shock\_protein\_70\_(hsp70)\_gene\_partial\_cds

KX573965.1:1-1245\_Leishmania\_sp.\_isolate\_PA\_133\_heat\_shock\_protein\_70\_(hsp70)\_gene\_partial\_cds

KX573966.1:1-1245\_Leishmania\_sp.\_isolate\_PA\_137\_heat\_shock\_protein\_70\_(hsp70)\_gene\_partial\_cds

KX573967.1:1-1245\_Leishmania\_sp.\_isolate\_PA\_145\_heat\_shock\_protein\_70\_(hsp70)\_gene\_partial\_cds

KX573969.1:1-1245\_Leishmania\_sp.\_isolate\_PA\_162\_heat\_shock\_protein\_70\_(hsp70)\_gene\_partial\_cds

KX573970.1:1-1245\_Leishmania\_sp.\_isolate\_PA\_163\_heat\_shock\_protein\_70\_(hsp70)\_gene\_partial\_cds

KX573972.1:1-1245\_Leishmania\_sp.\_isolate\_PA\_169\_heat\_shock\_protein\_70\_(hsp70)\_gene\_partial\_cds

KX573973.1:1-1245\_Leishmania\_sp.\_isolate\_PA\_171\_heat\_shock\_protein\_70\_(hsp70)\_gene\_partial\_cds

KX573976.1:1-1245\_Leishmania\_sp.\_isolate\_PA\_197\_I2\_heat\_shock\_protein\_70\_(hsp70)\_gene\_partial\_cds

KX573978.1:1-1245\_Leishmania\_sp.\_isolate\_PA\_224\_I1\_heat\_shock\_protein\_70\_(hsp70)\_gene\_partial\_cds

KX573980.1:1-1245\_Leishmania\_sp.\_isolate\_PA\_233\_heat\_shock\_protein\_70\_(hsp70)\_gene\_partial\_cds

KX573982.1:1-1245\_Leishmania\_sp.\_isolate\_PA\_284\_heat\_shock\_protein\_70\_(hsp70)\_gene\_partial\_cds

KX573988.1:1-1245\_Leishmania\_sp.\_isolate\_PA\_357\_heat\_shock\_protein\_70\_(hsp70)\_gene\_partial\_cds

##### 3\_L\_guyanensis\_complex\_Panama(1)

KX573990.1:1-1245\_Leishmania\_sp.\_isolate\_PA\_368\_heat\_shock\_protein\_70\_(hsp70)\_gene\_partial\_cds

##### 4\_L\_guyanensis\_complex\_Panama(13)

KX573993.1:1-1245\_Leishmania\_sp.\_isolate\_PA\_397\_heat\_shock\_protein\_70\_(hsp70)\_gene\_partial\_cds

KX573994.1:1-1245\_Leishmania\_sp.\_isolate\_PA\_407\_heat\_shock\_protein\_70\_(hsp70)\_gene\_partial\_cds

KX573997.1:1-1245\_Leishmania\_sp.\_isolate\_PA\_415\_heat\_shock\_protein\_70\_(hsp70)\_gene\_partial\_cds

KX573998.1:1-1245\_Leishmania\_sp.\_isolate\_PA\_418\_heat\_shock\_protein\_70\_(hsp70)\_gene\_partial\_cds

KX573999.1:1-1245\_Leishmania\_sp.\_isolate\_PA\_425\_heat\_shock\_protein\_70\_(hsp70)\_gene\_partial\_cds

KX574002.1:1-1245\_Leishmania\_sp.\_isolate\_PA\_438\_heat\_shock\_protein\_70\_(hsp70)\_gene\_partial\_cds

KX574003.1:1-1245\_Leishmania\_sp.\_isolate\_PA\_439\_heat\_shock\_protein\_70\_(hsp70)\_gene\_partial\_cds

KX574004.1:1-1245\_Leishmania\_sp.\_isolate\_PA\_443\_heat\_shock\_protein\_70\_(hsp70)\_gene\_partial\_cds

KX574005.1:1-1245\_Leishmania\_sp.\_isolate\_PA\_444\_heat\_shock\_protein\_70\_(hsp70)\_gene\_partial\_cds

KX574006.1:1-1245\_Leishmania\_sp.\_isolate\_PA\_445\_heat\_shock\_protein\_70\_(hsp70)\_gene\_partial\_cds

KX574012.1:1-1245\_Leishmania\_sp.\_isolate\_PA\_469\_heat\_shock\_protein\_70\_(hsp70)\_gene\_partial\_cds

KX574014.1:1-1245\_Leishmania\_sp.\_isolate\_PA\_530\_heat\_shock\_protein\_70\_(hsp70)\_gene\_partial\_cds

KX574015.1:1-1245\_Leishmania\_sp.\_isolate\_PA\_539\_heat\_shock\_protein\_70\_(hsp70)\_gene\_partial\_cds

##### 5\_L\_guyanensis\_complex\_Colombia(1)

LN907837.1:1-1245\_Leishmania\_sp.\_MHOM/CO/88/UA316\_partial\_hsp70\_gene\_for\_heat-

shock\_protein\_70\_kDa\_strain\_MHOM/CO/88/UA316

##### 6\_L\_guyanensis\_complex\_Ecuador(1)

MHOM/EC/2015/ITM15102466\_organism\_Leishmania\_guyanensis

##### 7\_L\_guyanensis\_complex\_Ecuador(1)

MHOM/EC/2015/ITM15121151\_organism\_Leishmania\_guyanensis\_complex

##### 8\_L\_guyanensis\_complex\_Ecuador(2)

MHOM/EC/2015/ITM15121974\_organism\_Leishmania\_guyanensis

MHOM/EC/2017/ITM17113319\_organism\_Leishmania\_guyanensis

##### 9\_L\_guyanensis\_complex\_Ecuador(1)

MHOM/EC/2018/ITM18093159\_organism\_Leishmania\_guyanensis\_complex

##### 10\_L\_guyanensis\_complex\_Ecuador(2)

MN688569.1:1-1245\_Leishmania\_guyanensis\_isolate\_MHOM/EC/2016/BCN-885\_heat-shock\_protein\_70\_(hsp70)\_gene\_partial\_cds

MT498900.1:1-1245\_Leishmania\_guyanensis\_isolate\_MHOM/EC/2016/BCN-885\_heat\_shock\_protein\_70\_(hsp70)\_gene\_partial\_cds

##### 11\_L\_braziliensis\_Guatemala(3)

MHOM/GT/2018/ITM18070595\_organism\_Leishmania\_braziliensis

MN688566.1:1-1245\_Leishmania\_braziliensis\_isolate\_MHOM/GT/2005/BCN-717\_heat-shock\_protein\_70\_(hsp70)\_gene\_partial\_cds

MT498877.1:1-1245\_Leishmania\_braziliensis\_isolate\_MHOM/GT/2005/BCN-717\_heat\_shock\_protein\_70\_(hsp70)\_gene\_partial\_cds

##### 12\_L\_braziliensis\_Panama(1)

KX573943.1:1-1245\_Leishmania\_sp.\_isolate\_PA\_024\_heat\_shock\_protein\_70\_(hsp70)\_gene\_partial\_cds

##### 13\_L\_braziliensis\_Panama(1)

KX573956.1:1-1245\_Leishmania\_sp.\_isolate\_PA\_107\_heat\_shock\_protein\_70\_(hsp70)\_gene\_partial\_cds

##### 14\_L\_braziliensis(1)

MHOM/--/2017/ITM17092834\_organism\_Leishmania\_braziliensis

##### 15\_L\_braziliensis\_Brazil(7)\_Panama(1)

KX573991.1:1-1245\_Leishmania\_sp.\_isolate\_PA\_372\_heat\_shock\_protein\_70\_(hsp70)\_gene\_partial\_cds

MH745179.1:1-1245\_Leishmania\_braziliensis\_strain\_MHOM/BR/2001/BA788\_heat\_shock\_protein\_70\_gene\_partial\_cds

MH745180.1:1-1245\_Leishmania\_braziliensis\_strain\_IWELL/BR/1981/M8401\_heat\_shock\_protein\_70\_gene\_partial\_cds

MH745181.1:1-1245\_Leishmania\_braziliensis\_strain\_MHOM/BR/1996/M15991\_heat\_shock\_protein\_70\_gene\_partial\_cds

MH745182.1:1-1245\_Leishmania\_braziliensis\_strain\_MHOM/BR/1995/RR80\_heat\_shock\_protein\_70\_gene\_partial\_cds

MH745183.1:1-1245\_Leishmania\_braziliensis\_strain\_MHOM/BR/2008/426\_heat\_shock\_protein\_70\_gene\_partial\_cds

MH745184.1:1-1245\_Leishmania\_braziliensis\_strain\_MHOM/BR/1995/RR051\_heat\_shock\_protein\_70\_gene\_partial\_cds

MH745185.1:1-1245\_Leishmania\_braziliensis\_strain\_MHOM/BR/1975/M2903\_heat\_shock\_protein\_70\_gene\_partial\_cds

- The putative parental haplotypes were confirmed partly by whole genome sequencing, using sequence reads covering several ambiguous sites.
- Interestingly, 7 sequences previously reported from Panama (3 of which published in [Miranda et al. 2021](#)) share up to 10 ambiguous positions with the Costa Rica sequence.
- The following figure shows (dash representing similarity with top sequence)
  - The ambiguous sites in the Costa Rica sequence.
  - The nucleotides in the 7 previously reported sequences from Panama (identified with GenBank entry).

Position in partial 1245 bp fragment of <i>hsp70</i> →	6	233	264	675	1078	1102	1134	1168	1171	1181	1236
Position in HSP70 CDS of whole genome →	504	731	762	1173	1576	1600	1632	1666	1669	1679	1734
MHOM/CR/2020/StPierre	R	S	R	R	K	R	Y	R	K	R	S
Panama KX573995.1 PA 410	.	.	.	.	.	.	.	.	T	.	.
Panama KX573992.1 PA 385	.	.	.	.	.	.	.	.	T	.	.
Panama KX573985.1 PA 333	.	.	.	.	.	.	.	.	T	.	.
Panama KX573954.1 PA 091	.	.	.	.	.	.	.	.	T	.	.
Panama KX573951.1 PA 084	.	.	.	.	.	.	.	.	T	.	.
Panama KX573948.1 PA 072	.	.	.	.	.	.	.	.	T	.	.
Panama KX573977.1 PA 206	.	.	.	G	T	A	.	.	T	A	C

Article DOI: <https://doi.org/10.3201/eid2905.221456>

*EID cannot ensure accessibility for supplementary materials supplied by authors. Readers who have difficulty accessing supplementary content should contact the authors for assistance.*

# Genome Analysis of Triploid Hybrid *Leishmania* Parasite from Neotropics

## Appendix 2

### Genome sequence analyses of MHOM/CR/2020/StPierre

#### PART A: Decomposing of haplotype sequences for the HSP70 gene

The ambiguity of bases at 11 positions in the HSP70 fragment (Table 1) prompted us to decompose haplotype sequences to infer the parental species of MHOM/CR/2020/StPierre. To this end, 150bp read sequences were mapped with SMALT against one of the HSP70 genes within the *L. braziliensis* M2904 reference genome. Sequence data spanning all six neighboring ambiguous positions (1576–1679) in one read were extracted. This revealed five sets of identical sequences (i.e., haplotypes) found within a total of 83 high-quality read sequences. Haplotype 1 (H1) was found in 26 read sequences (32%) and has alleles equal to the *L. braziliensis* M2904 reference (Table 1). Haplotype 2 (H2) was found in 31 read sequences (38%) and contains alleles specific to *L. guyanensis* (Table 1). The remaining 3 haplotypes (26 sequences) showed signatures of mosaic ancestry, with allelic combinations similar to haplotypes 1 and 2.

#### PART B: Whole genome sequence analyses

##### Publicly available sequence data

To capture as much as possible the genome diversity of *Leishmania* (*Viannia*) in South-America, we included publicly available sequence data from 35 strains and generated sequence data for 5 strains. Specifically, we included sequence data of the following seven *Leishmania* (*Viannia*) species: *L. lainsoni* (N = 1) (1), *L. naiffi* (N = 3) (2–4), *L. shawi* (N = 1) (4), *L.*

*guyanensis* (N = 3) (2–5), *L. panamensis* (N = 15) (4,6–8), *L. peruviana* (N = 2) (7) and *L. braziliensis* (N = 15) (7,9) (Table 2).

The three *L. guyanensis* strains originated from French Guiana, Brazil and Venezuela. The 15 *L. panamensis* strains originated from Colombia (N = 13) and Panama (N = 2) (Table 2). Note that one strain (LgCL085) was previously considered as *L. guyanensis* (3), but was here classified as *L. panamensis* following the phylogenomic analyses presented below.

We considered a total of four genetically divergent subgroups within the *L. braziliensis* species complex. The first subgroup, here-after referred to as *L. braziliensis* 1, is regarded as the main *L. braziliensis* species and is responsible for human (muco-)cutaneous leishmaniasis. The second subgroup, here-after referred to as *L. braziliensis* 2, has been occasionally diagnosed in Peru and Bolivia (10–12). The third subgroup, here-after referred to as *L. braziliensis* 3, was described within a geographically restricted ecotype in the Pernambuco state in Brazil (13). The fourth subgroup, here-after referred to as *L. braziliensis* 4, includes two strains from Colombia (9), and was classified as such by us following the phylogenomic analyses presented below.

#### **Genome sequencing of five *L. braziliensis* strains**

Sequence data was generated for three *L. braziliensis* 2 strains (CUM555, CUM663 and PER163) and two *L. braziliensis* 3 strains (HBO and LIS) (Table 2). To this end, parasites were grown in culture medium for 3 to 4 days at the Antwerp Institute of Tropical Medicine or FIOCRUZ in Brazil, and their DNA was extracted using a commercial column DNA extraction protocol. At the Wellcome Sanger Institute, genomic DNA was sheared into 400 to 600 bp fragments by focused ultrasonication (Covaris Inc.), and amplification-free Illumina libraries were prepared (14). One hundred base pair paired end reads were generated on the HiSeq 2000, and 150 bp paired end reads were generated on the HiSeq ×10 according to the manufacturer's standard sequencing protocol.

#### **Bioinformatic analyses**

Genomic sequence reads of all strains were mapped against the *L. braziliensis* M2904 reference genome (available on <https://tritrypdb.org> as LbraziliensisMHOMBR75M2904\_2019) using SMALT v0.7.6 (<https://www.sanger.ac.uk/tool/smalt-0/>). This reference includes 35 major chromosomes (32.73Mb) and a complete mitochondrial maxicircle (27.69kb) (7).

Given the diversity of species included in this study, we tested the quality of sequence alignments against the M2904 reference by characterizing the accessible genome (15), i.e., genomic regions with a minimum read depth of 5, mapping quality of 25 and base quality of 25. The coverage of the accessible genome ranged between 28.6Mb (87.2% of the chromosomal region) for *L. shawi* strain M8408 and 30.4Mb (92.9%) for *L. braziliensis* strain Lb8025 (Table 3). The coverage for strain MHOM/CR/2020/StPierre was equal to 30.0 Mb (91.8%) (Table 3). These results showed that a substantial fraction of the reference genome can be used for genotyping and ancestry analyses.

**Large number of heterozygous sites (where one haplotype is similar to M2904) points to a member of the *L. braziliensis* species complex as one of the parents**

A total of 125,632 SNPs were identified within the strain from Costa Rica, including 21,168 homozygous SNPs (where both haplotypes were different to the consensus sequence of M2904) and 104,464 heterozygous SNPs (where one haplotype was similar to M2904 and the other different). This latter observation indicates *L. braziliensis* as one of the species that contributed sequences. This number of heterozygous SNPs was at least 4.1 and 16.4 times higher compared to the numbers observed for *L. braziliensis* and *L. guyanensis* respectively (Figure 1), confirming that the Costa Rica strain is either the result of hybridization or a mixed infection.

**Phylogenetic analyses based on the mitochondrial maxicircle points to a member of the *L. guyanensis* species complex as one of the parents**

Single Nucleotide Polymorphisms (SNPs) were called jointly across all genomes using bcftools mpileup/call (16), retaining only SNPs with a minimum SNP quality (QUAL) of 100, mapping quality of 50 and genotype quality of 60. Genotyping uncovered - across all genomes - a total 1,103,461 SNPs within the 35 major chromosomes and 467 SNPs within the coding region of the mitochondrial maxicircle. A phylogenetic network reconstructed with SplitsTree (17) using nuclear SNPs showed that the Costa Rica strain occupied a central position between the *L. guyanensis* and *L. braziliensis* species complexes, highlighting its uncertain ancestry (Figure 2). A phylogeny based on the uniparentally inherited mitochondrial maxicircles (7,18,19) showed that the Costa Rica strain clustered with *L. guyanensis* (Figure 3), pointing to a member of the *L. guyanensis* species complex as one of the parental species.

### **Genomic distribution of heterozygous sites suggests that MHOM/CR/2020/StPierre is a hybrid parasite, rather than the result of a mixed infection**

When analyzing the genome-wide SNP distribution in non-overlapping 10kb windows (3,091 windows in total), 2,890 windows (93.5%) were found where at least half the SNPs were heterozygous (Figure 4), and only 108 windows (3.5%) were entirely homozygous. The majority of homozygous 10kb windows (95/108, 88%) covered almost entirely chromosomes 1 and 11, the first 140 kb of chromosome 20 and the last 60kb of chromosome 27 (Figure 5). The observation of a largely heterozygous genome that is interrupted by homozygous stretches strongly suggests that the isolate is a hybrid parasite, rather than the result of a mixed infection.

### **Distribution of allelic read depths at heterozygous sites shows that the hybrid is a triploid parasite, and reveals major recombination breakpoints**

The genetic complexity of *Leishmania* infections is of particular interest because of the existence of aneuploidy, which was genomically inferred by investigating allelic read depth frequencies (ARDF) at heterozygous sites and standardized chromosomal read depths (20). The genome-wide ARDF distribution was bimodal for the hybrid parasite, with modes 0.33 and 0.67 (Figure 6) suggesting that the hybrid is triploid (21), with the exceptions of chromosomes 1 and 11 (no distribution because of absence of heterozygous sites), 3 and 12 (trimodal distributions). Assuming triploidy, standardized chromosomal read depths showed that chromosome 10 was trisomic, chromosomes 1, 3 and 12 were tetrasomic and chromosome 31 was hexasomic (Table 4). Shifts in the ARDF distribution of species-specific alleles between the two modes along chromosomes (Figure 7) represent recombination events that occurred since the hybridization event (18) and further exclude the possibility of a mixed infection.

### **Neighbor-Joining phylogenetic trees**

The low bootstrap estimates in the ML phylogenetic trees based on SNPs detected in the telomeric region of chromosome 20 (Figure in main article) and the maxicircle coding region (Figure 3) prompted us to reconstruct a different type of phylogeny for complementary insights. To this end, we reconstructed Neighbor-Joining phylogenetic trees based on the number of nucleotide differences between *Leishmania* strains using the R package ape (23), which are shown in Figures 8 and 9.



## References

1. Lin W, Batra D, Narayanan V, Rowe LA, Sheth M, Zheng Y, et al. First draft genome sequence of *Leishmania (Viannia) lainsoni* strain 216-34, isolated from a Peruvian clinical case. *Microbiol Resour Announc.* 2019;8:e01524–18. [PubMed https://doi.org/10.1128/MRA.01524-18](https://doi.org/10.1128/MRA.01524-18)
2. Patiño LH, Muñoz M, Pavia P, Muskus C, Shaban M, Paniz-Mondolfi A, et al. Filling the gaps in *Leishmania naiffi* and *Leishmania guyanensis* genome plasticity. *G3 (Bethesda)*. 2022;12:jkab377. [PubMed https://doi.org/10.1093/g3journal/jkab377](https://doi.org/10.1093/g3journal/jkab377)
3. Coughlan S, Taylor AS, Feane E, Sanders M, Schonian G, Cotton JA, et al. *Leishmania naiffi* and *Leishmania guyanensis* reference genomes highlight genome structure and gene evolution in the *Viannia* subgenus. *R Soc Open Sci.* 2018;5:172212. [PubMed https://doi.org/10.1098/rsos.172212](https://doi.org/10.1098/rsos.172212)
4. Harkins KM, Schwartz RS, Cartwright RA, Stone AC. Phylogenomic reconstruction supports supercontinent origins for *Leishmania*. *Infect Genet Evol.* 2016;38:101–9. [PubMed https://doi.org/10.1016/j.meegid.2015.11.030](https://doi.org/10.1016/j.meegid.2015.11.030)
5. Batra D, Lin W, Rowe LA, Sheth M, Zheng Y, Loparev V, et al. Draft genome sequence of French Guiana *Leishmania (Viannia) guyanensis* strain 204-365, assembled using long reads. *Microbiol Resour Announc.* 2018;7:e01421-18. [PubMed https://doi.org/10.1128/MRA.01421-18](https://doi.org/10.1128/MRA.01421-18)
6. Llanes A, Restrepo CM, Del Vecchio G, Anguizola FJ, Lleonart R. The genome of *Leishmania panamensis*: insights into genomics of the *L. (Viannia)* subgenus. *Sci Rep.* 2015;5:8550. [PubMed https://doi.org/10.1038/srep08550](https://doi.org/10.1038/srep08550)
7. Van den Broeck F, Savill NJ, Imamura H, Sanders M, Maes I, Cooper S, et al. Ecological divergence and hybridization of Neotropical *Leishmania* parasites. *Proc Natl Acad Sci U S A.* 2020;117:25159–68. [PubMed https://doi.org/10.1073/pnas.1920136117](https://doi.org/10.1073/pnas.1920136117)
8. Patino LH, Muñoz M, Muskus C, Méndez C, Ramírez JD. Intraspecific genomic divergence and minor structural variations in *Leishmania (Viannia) panamensis*. *Genes (Basel)*. 2020;11:252. [PubMed https://doi.org/10.3390/genes11030252](https://doi.org/10.3390/genes11030252)
9. Patino LH, Muñoz M, Cruz-Saavedra L, Muskus C, Ramírez JD. Genomic diversification, structural plasticity, and hybridization in *Leishmania (Viannia) braziliensis*. *Front Cell Infect Microbiol.* 2020;10:582192. [PubMed https://doi.org/10.3389/fcimb.2020.582192](https://doi.org/10.3389/fcimb.2020.582192)

10. Odiwuor S, Veland N, Maes I, Arévalo J, Dujardin JC, Van der Auwera G. Evolution of the *Leishmania braziliensis* species complex from amplified fragment length polymorphisms, and clinical implications. *Infect Genet Evol.* 2012;12:1994–2002. [PubMed](#)  
<https://doi.org/10.1016/j.meegid.2012.03.028>
11. Brilhante AF, Lima L, Zampieri RA, Nunes VLB, Dorval MEC, Malavazi PFNDS, et al. *Leishmania* (Viannia) *braziliensis* type 2 as probable etiological agent of canine cutaneous leishmaniasis in Brazilian Amazon. *PLoS One.* 2019;14:e0216291. [PubMed](#)  
<https://doi.org/10.1371/journal.pone.0216291>
12. Van der Auwera G, Ravel C, Verweij JJ, Bart A, Schönian G, Felger I. Evaluation of four single-locus markers for *Leishmania* species discrimination by sequencing. *J Clin Microbiol.* 2014;52:1098–104. [PubMed](#) <https://doi.org/10.1128/JCM.02936-13>
13. S L Figueiredo de Sá B, Rezende AM, Melo Neto OP, Brito MEF, Brandão Filho SP. Identification of divergent *Leishmania* (Viannia) *braziliensis* ecotypes derived from a geographically restricted area through whole genome analysis. *PLoS Negl Trop Dis.* 2019;13:e0007382. [PubMed](#)  
<https://doi.org/10.1371/journal.pntd.0007382>
14. Kozarewa, Ning, Quail, Sanders. Amplification-free Illumina sequencing-library preparation facilitates improved mapping and assembly of (G+ C)-biased genomes. *Nat Methods.* 2009;6:291–5. **PMID 19287394**
15. McKenna A, Hanna M, Banks E, Sivachenko A, Cibulskis K, Kernytzky A, et al. The genome analysis toolkit: a MapReduce framework for analyzing next-generation DNA sequencing data. *Genome Res.* 2010;20:1297–303. [PubMed](#) <https://doi.org/10.1101/gr.107524.110>
16. Danecek P, Bonfield JK, Liddle J, Marshall J, Ohan V, Pollard MO, et al. Twelve years of SAMtools and BCFtools. *Gigascience.* 2021;10:giab008. [PubMed](#)  
<https://doi.org/10.1093/gigascience/giab008>
17. Huson DH. SplitsTree: analyzing and visualizing evolutionary data. *Bioinformatics.* 1998;14:68–73. [PubMed](#) <https://doi.org/10.1093/bioinformatics/14.1.68>
18. Rogers MB, Downing T, Smith BA, Imamura H, Sanders M, Svobodova M, et al. Genomic confirmation of hybridisation and recent inbreeding in a vector-isolated *Leishmania* population. *PLoS Genet.* 2014;10:e1004092. [PubMed](#) <https://doi.org/10.1371/journal.pgen.1004092>

19. Van den Broeck F, Tavernier LJM, Vermeiren L, Dujardin JC, Van Den Abbeele J. Mitonuclear genomics challenges the theory of clonality in *Trypanosoma congolense*: reply to Tibayrenc and Ayala. *Mol Ecol.* 2018;27:3425–31. [PubMed https://doi.org/10.1111/mec.14809](https://doi.org/10.1111/mec.14809)
20. Rogers MB, Hilley JD, Dickens NJ, Wilkes J, Bates PA, Depledge DP, et al. Chromosome and gene copy number variation allow major structural change between species and strains of *Leishmania*. *Genome Res.* 2011;21:2129–42. [PubMed https://doi.org/10.1101/gr.122945.111](https://doi.org/10.1101/gr.122945.111)
21. Tihon E, Imamura H, Dujardin JC, Van Den Abbeele J, Van den Broeck F. Discovery and genomic analyses of hybridization between divergent lineages of *Trypanosoma congolense*, causative agent of Animal African Trypanosomiasis. *Mol Ecol.* 2017;26:6524–38. [PubMed https://doi.org/10.1111/mec.14271](https://doi.org/10.1111/mec.14271)
22. Leys S, Windsor-Reid P. Phylogenetic Tree for Porifera Wnts using IQTREE. 2017 [cited 2019 Aug 15]. <https://era.library.ualberta.ca/items/ca816413-df15-4a31-8da8-3b06077387b9>
23. Paradis E, Schliep K. ape 5.0: an environment for modern phylogenetics and evolutionary analyses in R. *Bioinformatics.* 2019;35:526–8. [PubMed https://doi.org/10.1093/bioinformatics/bty633](https://doi.org/10.1093/bioinformatics/bty633)

**Table 1.** Sequence variation across 11 positions in the multicopy heat-shock protein 70 gene (*hsp70*)\*

POSITION on full CDS	SANGER	WGS	H1 (M2904)	H2 ( <i>L. guyanensis</i> )
504	R	G, A	NA	NA
731	S	G, C	NA	NA
762	R	G, A	NA	NA
1173	R	G, A	NA	NA
1576	K	T, G	T	G
1600	R	A, G	A	G
1632	Y	C, T	C	T
1666	R	G, A	G	A
1669	K	T, G	T	G
1679	R	A, G	A	G
1734	S	C, G	NA	NA

\*A 1,245 bp fragment of the *hsp70* locus was sequenced for species typing, revealing ambiguous bases at 11 positions (column 'SANGER'). Underlying alleles were identified through genotyping of Single Nucleotide Polymorphisms (SNPs) after mapping sequencing reads against a single *hsp70* gene sequence of the M2904 reference genome. This revealed heterozygous SNPs at all 11 ambiguous positions: the two alleles in column 'WGS' represent the reference allele (similar to the M2904 consensus sequence) and alternate allele (different to the M2904 consensus sequence), respectively. Haplotypes (columns 'H1' and 'H2') were decomposed for six neighboring ambiguous positions (1576–1679) by extracting 150bp sequence reads covering all six positions.

**Table 2.** List of 40 publicly and in-house available sequence data from seven *Leishmania* (*Viannia*) species that were used for whole genome sequence analyses\*

SRA Run Accession Number	Name	Species	Country	References
ERR471302	CUM29	<i>L. braziliensis</i> 1	Bolivia	(7)
ERR3988461	Lb7529	<i>L. braziliensis</i> 1	Colombia	(9)
ERR3988463	Lb7740	<i>L. braziliensis</i> 1	Colombia	(9)
ERR3988465	Lb7933	<i>L. braziliensis</i> 1	Bolivia	(9)
ERR3988466	Lb8025	<i>L. braziliensis</i> 1	Colombia	(9)
ERR3988467	Lb8102	<i>L. braziliensis</i> 1	Colombia	(9)
ERR377654	LC1565	<i>L. braziliensis</i> 1	Peru	(7)
ERR3150801	RO393	<i>L. braziliensis</i> 1	Brazil	(7)
ERR877281	CUM555	<i>L. braziliensis</i> 2	Bolivia	this study
ERR877282	CUM663	<i>L. braziliensis</i> 2	Bolivia	this study
ERR467298	PER163	<i>L. braziliensis</i> 2	Peru	this study
ERR3150831, ERR3150735	HBO	<i>L. braziliensis</i> 3	Brazil	this study
ERR3150728, ERR3150824	LIS	<i>L. braziliensis</i> 3	Brazil	this study
ERR3988462	Lb7616	<i>L. braziliensis</i> 4	Colombia	(9)
ERR3988464	Lb7864	<i>L. braziliensis</i> 4	Colombia	(9)
SRR8179913	204–365	<i>L. guyanensis</i>	French Guyana	(5)
SRR1662195	M4147	<i>L. guyanensis</i>	Brazil	(4)
ERR6188759	S8104	<i>L. guyanensis</i>	Venezuela	(2)
SRR8179821	216_34	<i>L. lainsoni</i>	Peru	(1)
ERR6188758	HOMI-81	<i>L. naiffi</i>	Colombia	(2)
ERR205764	LnCL223	<i>L. naiffi</i>	Colombia	(3)
SRR1657911	M5533	<i>L. naiffi</i>	Brazil	(4)
ERR205773	LgCL085	<i>L. panamensis</i>	Colombia	(3)
ERR3648455	LpS7762	<i>L. panamensis</i>	Colombia	(8)
ERR3648456	LpS7842	<i>L. panamensis</i>	Colombia	(8)
ERR3648457	LpS8036	<i>L. panamensis</i>	Colombia	(8)
ERR3648458	LpS8046	<i>L. panamensis</i>	Colombia	(8)
ERR3648459	LpS8049	<i>L. panamensis</i>	Colombia	(8)
ERR3648460	LpS8056	<i>L. panamensis</i>	Colombia	(8)
ERR3648461	LpS8061	<i>L. panamensis</i>	Colombia	(8)
ERR3648463	LpS8087	<i>L. panamensis</i>	Colombia	(8)
ERR3648466	LpS8117	<i>L. panamensis</i>	Colombia	(8)
ERR3648467	LpS8124	<i>L. panamensis</i>	Colombia	(8)
ERR3648469	LpS8136	<i>L. panamensis</i>	Colombia	(8)
SRR1552486	PSC1	<i>L. panamensis</i>	Panama	(6)
ERR3656054	REST417	<i>L. panamensis</i>	Colombia	(7)
SRR1662198	WR120	<i>L. panamensis</i>	Panama	(4)
ERR662608	HB83	<i>L. peruviana</i>	Peru	(7)
ERR662626	LCA04	<i>L. peruviana</i>	Peru	(7)
SRR1657909	M8408	<i>L. shawi</i>	Brazil	(4)

\*RO393, LIS and HBO are *Leishmania* strains available at the *Leishmania* collection from the Oswaldo Cruz Foundation, Rio de Janeiro, Brazil (<http://clioc.fiocruz.br/>).

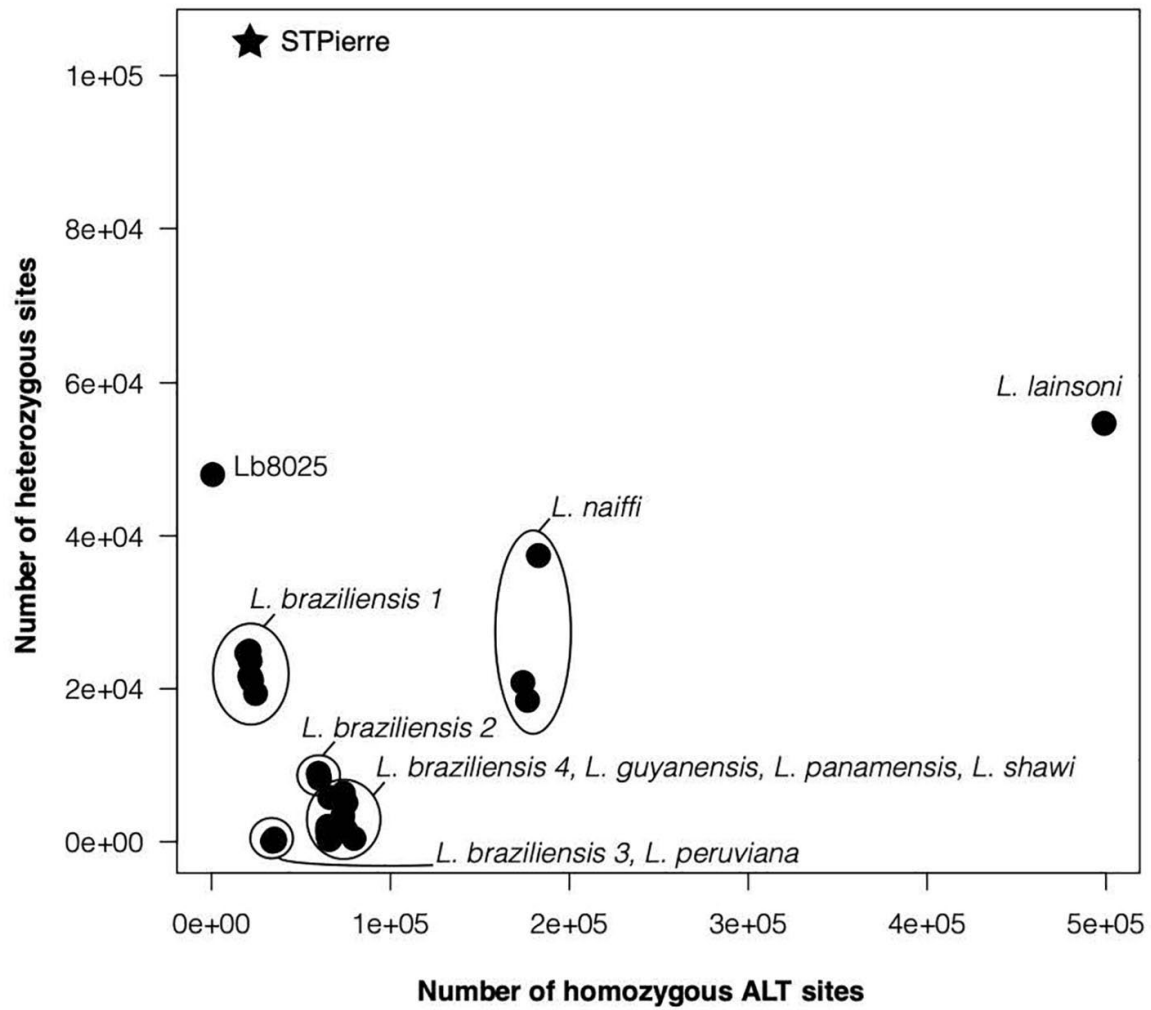
**Table 3.** Coverage and number of accessible genomic regions in each of the 41 *Leishmania* strains

Species	Strain	Coverage	Fraction	Number of regions
<i>Leishmania shawi</i>	M8408	28552102	87,23%	65585
<i>Leishmania panamensis</i>	WR120	28586898	87,34%	64401
<i>Leishmania naiffi</i>	M5533	28604295	87,39%	61373
<i>Leishmania panamensis</i>	REST417	28765477	87,88%	77484
<i>Leishmania lainsoni</i>	216_34	28788593	87,96%	94726
<i>Leishmania naiffi</i>	LnCL223	28832216	88,09%	94858
<i>Leishmania guyanensis</i>	M4147	28867457	88,20%	50537
<i>Leishmania naiffi</i>	HOM81	29366435	89,72%	38873
<i>Leishmania panamensis</i>	LgCL085	29410263	89,85%	41655
<i>Leishmania panamensis</i>	PSC1	29501473	90,13%	30825
<i>Leishmania guyanensis</i>	204_365	29585997	90,39%	62565
<i>Leishmania panamensis</i>	LpS8124	29638319	90,55%	24813
<i>Leishmania panamensis</i>	LpS8136	29642314	90,56%	25099
<i>Leishmania panamensis</i>	LpS8117	29646217	90,58%	23988
<i>Leishmania panamensis</i>	LpS8049	29661360	90,62%	23912
<i>Leishmania panamensis</i>	LpS8061	29678344	90,67%	24194
<i>Leishmania panamensis</i>	LpS8046	29682946	90,69%	24614
<i>Leishmania guyanensis</i>	S8104	29684216	90,69%	23465

Species	Strain	Coverage	Fraction	Number of regions
<i>Leishmania panamensis</i>	LpS8056	29686912	90,70%	24218
<i>Leishmania panamensis</i>	LpS7762	29692655	90,72%	21681
<i>Leishmania panamensis</i>	LpS7842	29715153	90,79%	22423
<i>Leishmania panamensis</i>	LpS8087	29716249	90,79%	21868
<i>Leishmania panamensis</i>	LpS8036	29728357	90,83%	21984
<i>Leishmania braziliensis</i> 2	PER163	29791821	91,02%	32749
<i>Leishmania braziliensis</i> 4	Lb7864	29815765	91,09%	17887
<i>Leishmania braziliensis</i> 1	LC1565	29861013	91,23%	27927
<i>Leishmania braziliensis</i> 2	CUM663	29872352	91,27%	32131
<i>Leishmania braziliensis</i> 2	CUM555	29887936	91,31%	31159
<i>Leishmania braziliensis</i> 4	Lb7616	29944008	91,49%	15486
<i>Leishmania peruviana</i>	HB83	29984415	91,61%	29030
<i>Leishmania peruviana</i>	LCA04	30014816	91,70%	25532
<i>Leishmania braziliensis</i> 1	CUM29	30025178	91,73%	21921
Hybrid strain	MHOM/CR/2020/StPierre	30032613	91,76%	16291
<i>Leishmania braziliensis</i> 3	HBOA1	30039532	91,78%	28782
<i>Leishmania braziliensis</i> 3	LISA1	30046468	91,80%	27611
<i>Leishmania braziliensis</i> 1	Lb8102	30054846	91,82%	11135
<i>Leishmania braziliensis</i> 1	Lb7740	30062478	91,85%	11505
<i>Leishmania braziliensis</i> 1	Lb7529	30082397	91,91%	10581
<i>Leishmania braziliensis</i> 1	Lb7933	30129942	92,05%	10957
<i>Leishmania braziliensis</i> 1	RO393	30160429	92,15%	27477
<i>Leishmania braziliensis</i> 1	Lb8025	30412185	92,92%	8012

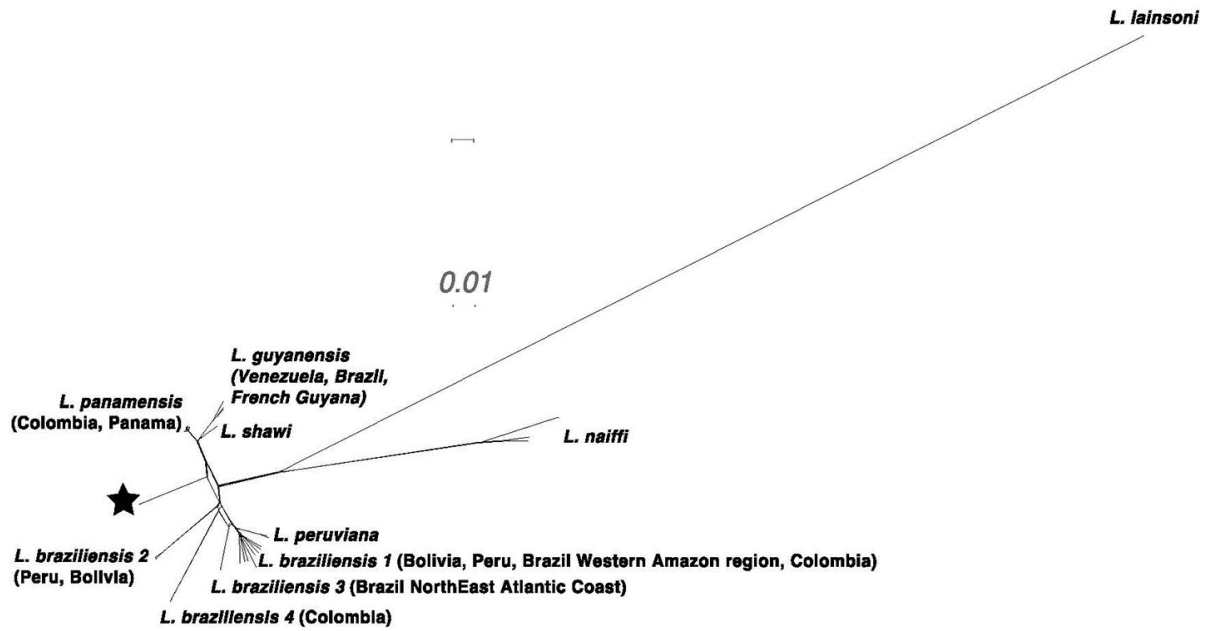
**Table 4.** Somy variation was genomically inferred by investigating allelic read depth frequencies (ARDF) at heterozygous sites and standardized chromosomal read depths assuming triploidy (20)

Chromosome	Haploid Chromosomal Read Depths	Somy based on read depths, assuming triploidy	Somy based on ARDF
1	1,4	4,3	NA
2	0,9	2,6	3
3	1,3	3,9	4
4	1,0	2,9	3
5	1,0	3,1	3
6	1,0	3,0	3
7	1,0	3,0	3
8	1,0	2,9	3
9	1,0	3,0	3
10	0,9	2,8	3
11	1,1	3,2	NA
12	1,4	4,1	4
13	1,0	2,9	3
14	1,0	3,0	3
15	1,0	3,1	3
16	1,0	3,0	3
17	1,0	3,1	3
18	1,0	3,0	3
19	1,0	2,9	3
20	1,0	2,9	3
21	1,0	3,0	3
22	1,0	3,0	3
23	1,0	3,1	3
24	1,0	3,0	3
25	1,0	3,1	3
26	1,0	3,0	3
27	1,0	3,0	3
28	1,0	3,0	3
29	1,0	3,0	3
30	1,0	3,0	3
31	2,0	6,0	6
32	1,0	3,0	3
33	1,0	3,0	3
34	1,0	3,0	3
35	1,0	3,0	3

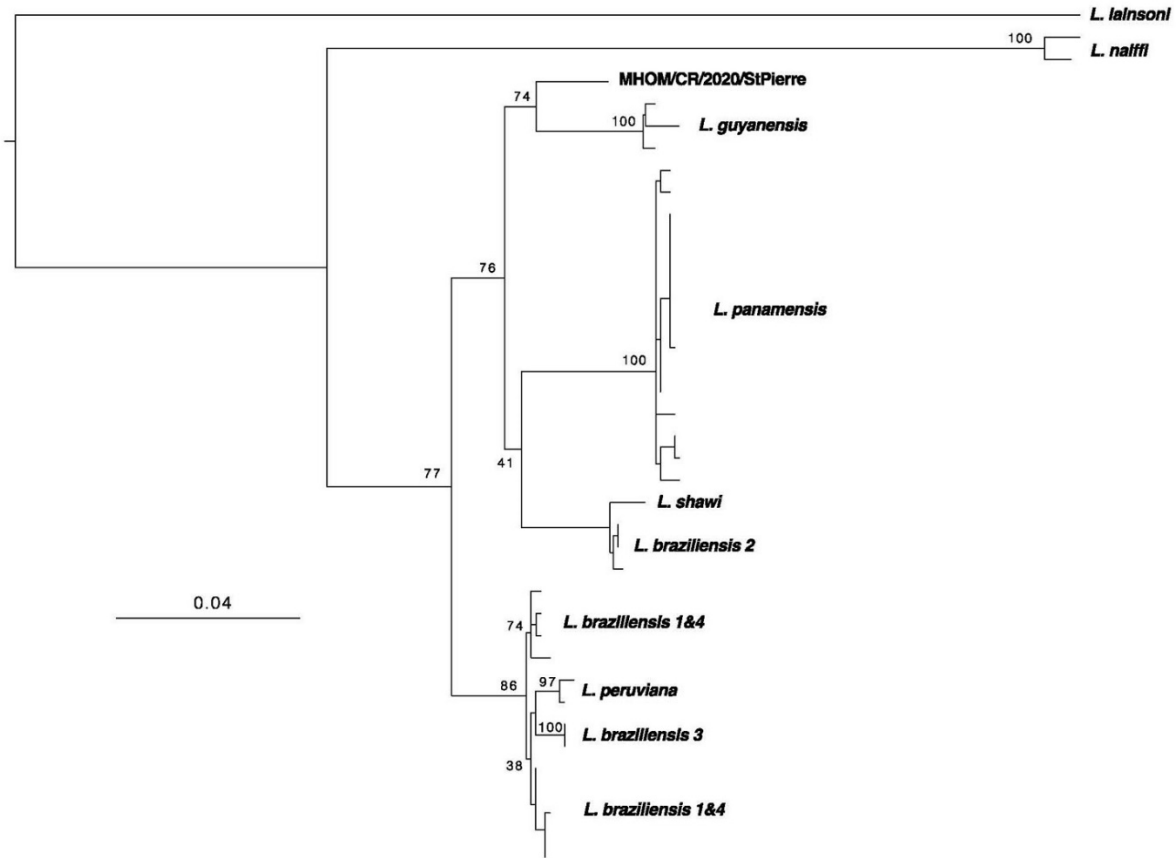


**Appendix 2 Figure 1.** Number of heterozygous versus homozygous sites for each of the 41 *Leishmania* genomes included in this study. ALT = alternate alleles, i.e., alleles different to the reference genome.

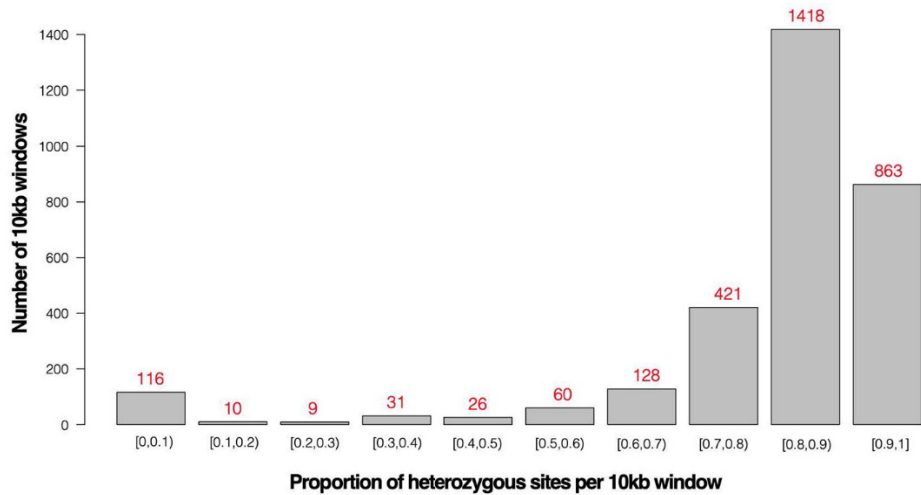




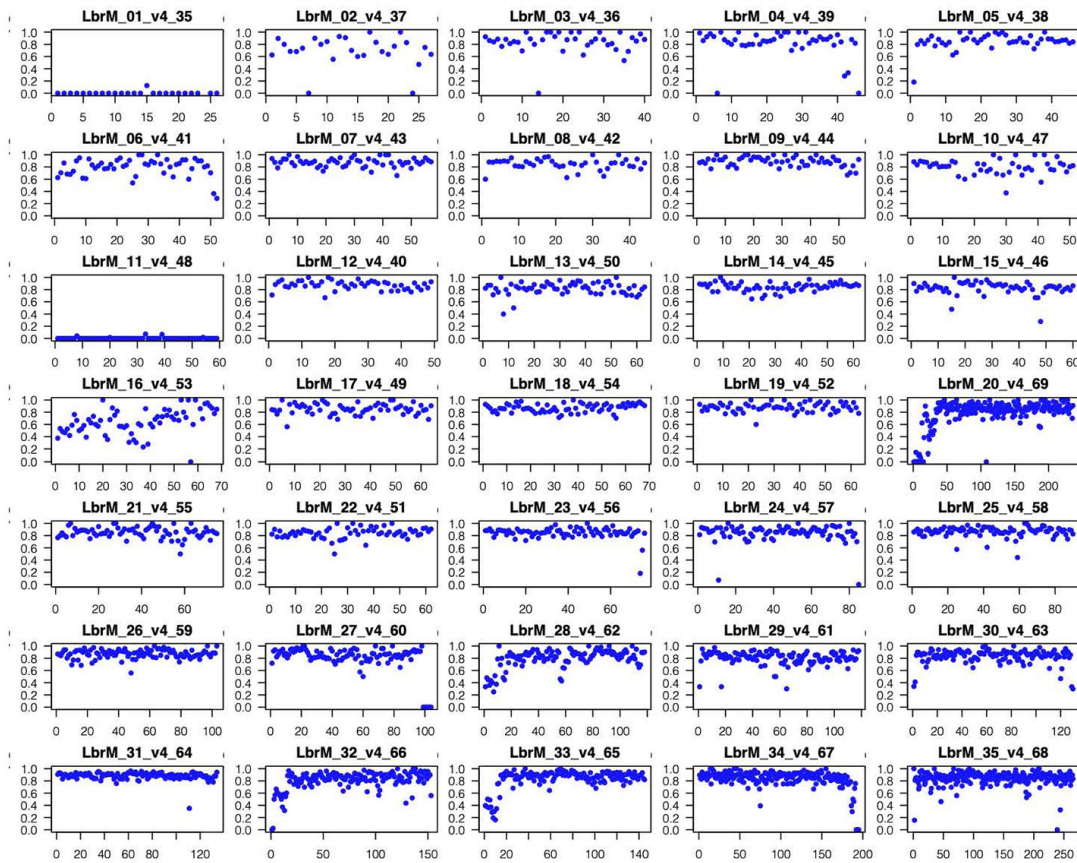
**Appendix 2 Figure 2.** Phylogenetic network as obtained with SplitsTree (17) using 1,103,461 genome-wide SNPs called across 41 *Leishmania* genomes. The star indicates the position of MHOM/CR/2020/StPierre. For each strain, sequences were composed based on concatenated SNPs that were each coded by two base pairs, resulting in sequences of 2,206,922 nt. The distance scale on top shows substitutions/sites.



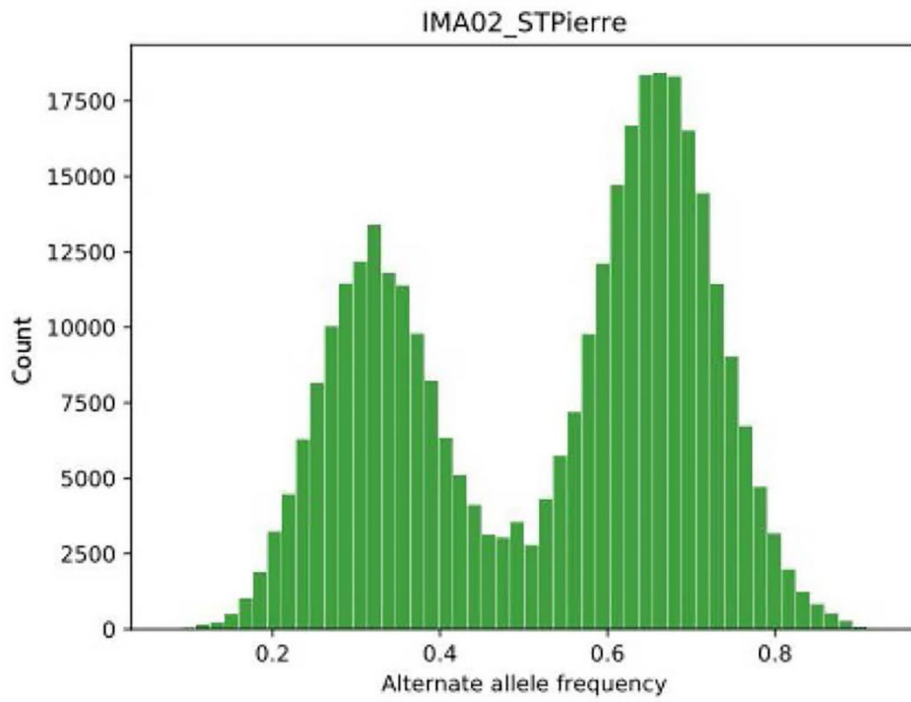
**Appendix 2 Figure 3.** Midpoint rooted Maximum Likelihood phylogenetic trees based on 467 SNPs called within the mitochondrial maxicircle coding region. Consensus phylogenetic trees were generated from 1,000 bootstrap trees using IQTREE (22) under the TN+F+ASC substitution model (TN = unequal transition/transversion rates and unequal purine/pyrimidine rates, *F* = empirical base frequencies, ASC = ascertainment bias correction), which was the best-fit model revealed by ModelFinder as implemented in IQTREE. Assuming that the maxicircle is haploid and because we observed no signatures of heteroplasmy (all SNPs were homozygous), SNPs were coded by one base pair, resulting in sequences of 467 nt. The distance scale (bottom) shows substitutions/sites. Branch support values are presented near each node following 1000 bootstrap replicates. Note that the *L. braziliensis* lineage 2 is closely related to *L. shawi* and positioned with low bootstrap support (41%) within the *L. guyanensis* species complex. This discrepancy between the nuclear (Figure 2) and maxicircle (Figure 3) phylogenies suggest a complex ancestry for the *L. braziliensis* lineage 2, an observation that warrants more detailed analyses in future research.



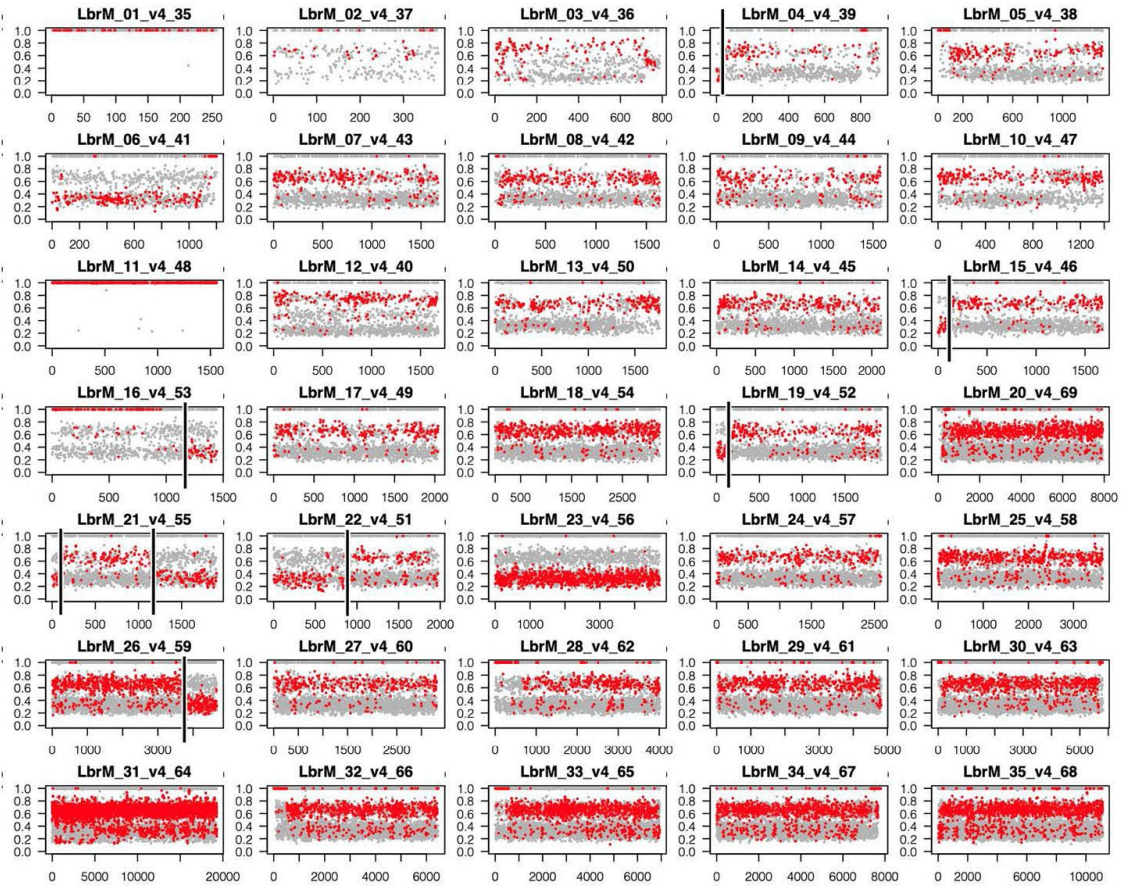
**Appendix 2 Figure 4.** Number of 10kb windows (y-axis) with a given fraction of heterozygous SNP sites (x-axis).



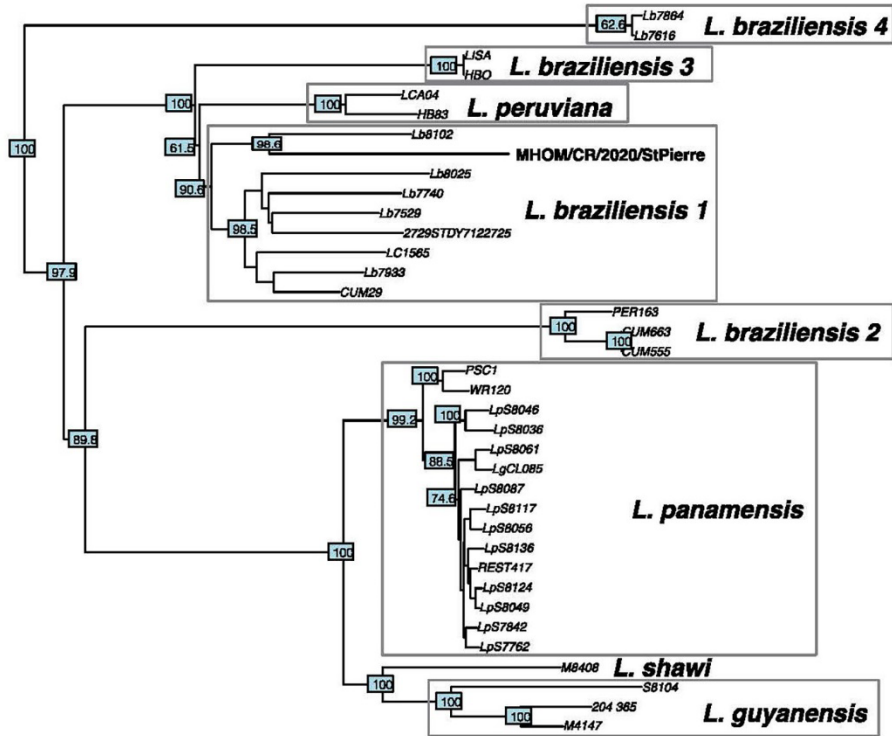
**Appendix 2 Figure 5.** Fraction of heterozygous sites (y-axis) per 10kb window (x-axis) along each of the 35 chromosomes. The majority of homozygous 10kb windows (95/108, 88%) covered almost entirely chromosomes 1 and 11, the first 140 kb of chromosome 20 and the last 60kb of chromosome 27.



**Appendix 2 Figure 6.** Genome-wide distribution of read depth frequencies of alternate alleles at heterozygous sites for MHOM/CR/2020/StPierre.

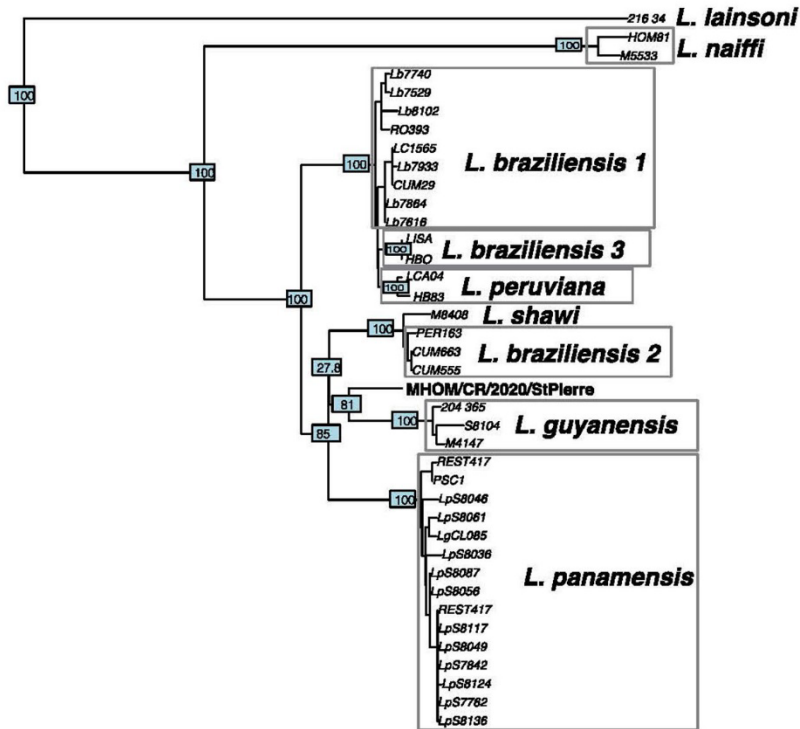


**Appendix 2 Figure 7.** Distribution of read depth frequencies of all alternate alleles (gray and red dots) at heterozygous sites for each of the 35 chromosomes in the hybrid genome. Red dots reflect alternate alleles that were specific to the *L. guyanensis* species complex, i.e., alleles found in *L. guyanensis* and/or *L. panamensis* and/or *L. shawi* strains and not in any other *Viannia* species. Black bars denote position of major shifts in read depth frequencies, which represent recombination events since the initial hybridization event.



**Appendix 2 Figure 8.** Neighbor-Joining tree based on the number of nucleotide differences between *Leishmania* strains. Sequences contained 3,015 nt from the telomeric region of chromosome 20 and are the same as used in Figure 1 of the main text. Node support is based on 1,000 bootstrapped phylogenetic trees.





**Appendix 2 Figure 9.** Neighbor-Joining tree based on the number of nucleotide differences between *Leishmania* strains. Sequences contained 467 nt from the maxicircle coding region and are the same as used in Figure 3 of Appendix 2. Node support is based on 1000 bootstrapped phylogenetic trees.