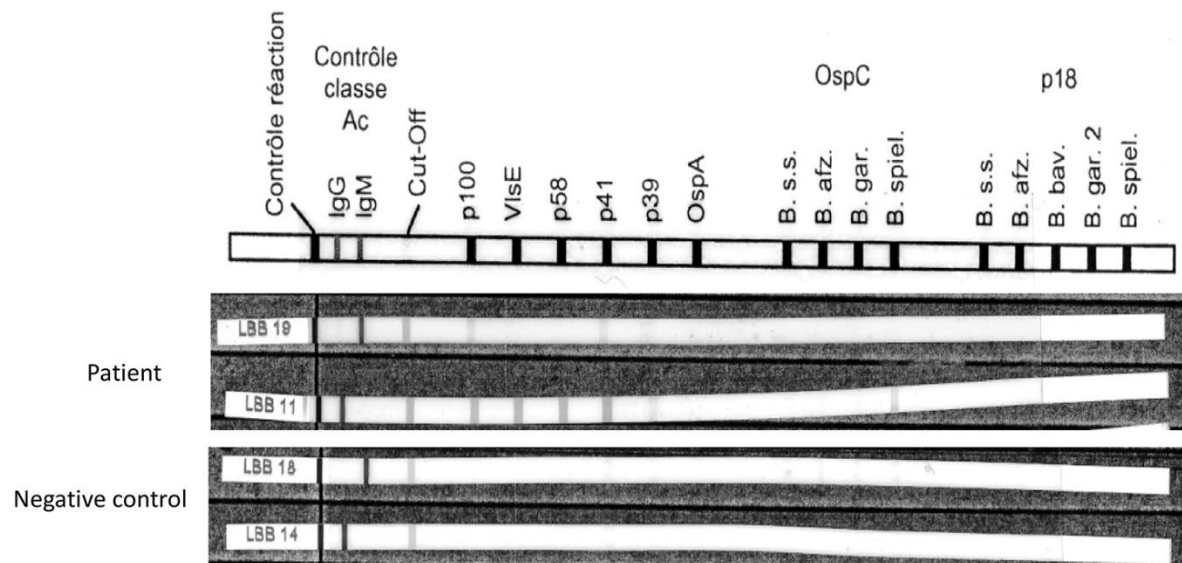


# Erythema Migrans Caused by *Borrelia spielmanii*, France

## Appendix



**Appendix Figure.** IgM and IgG results from a western blot test of serum from the patient and a negative control. Ac, activator; B, *Borrelia*; B. afz, *Borrelia afzelii*; B. bav, *Borrelia bavariensis*; B. gar, *Borrelia garinii*; B. s.s., *Borrelia sensu stricto*; osp, outer surface protein; vis, visium spatial gene