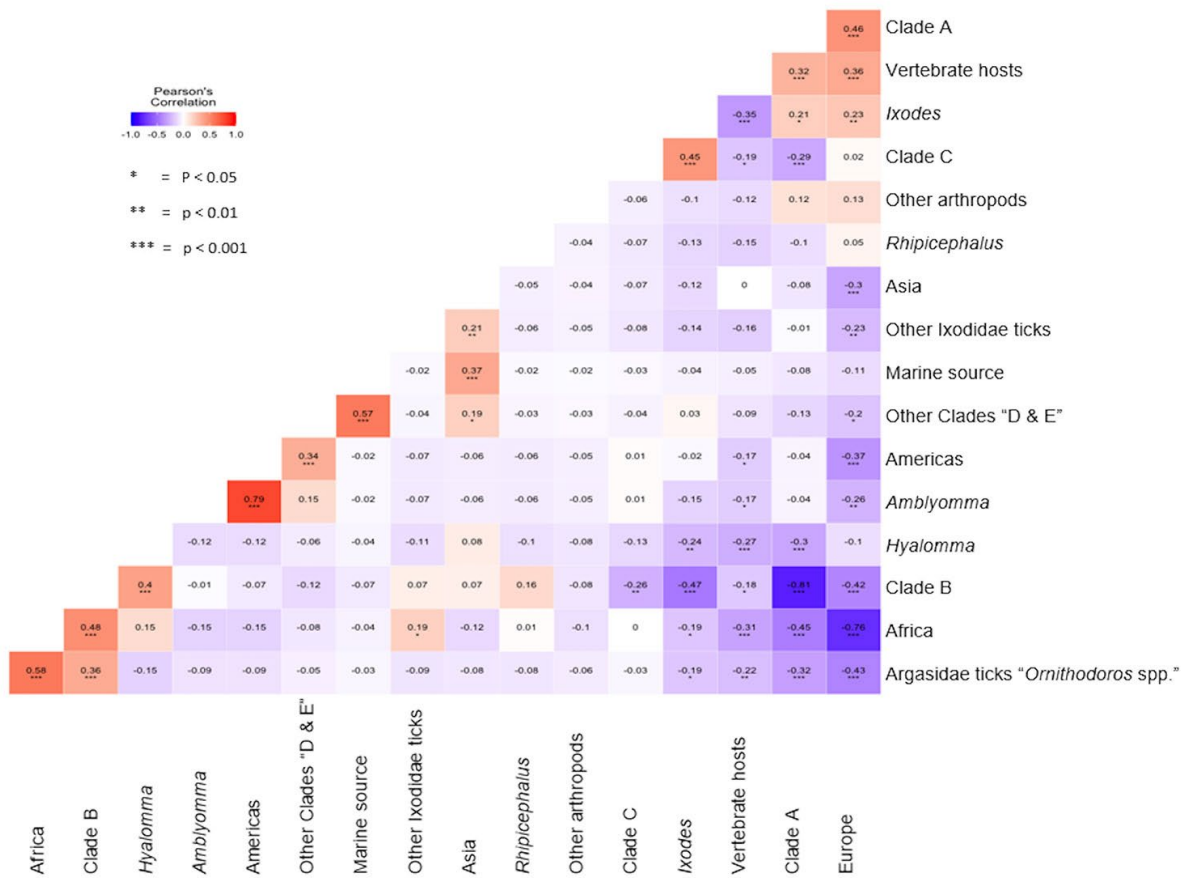


# Detection of Endosymbiont *Candidatus* Midichloria mitochondrii and Tickborne Pathogens in Humans Exposed to Tick Bites, Italy

## Appendix



**Appendix Figure.** Pearson correlation matrix showing the association of *Candidatus* Midichloria mitochondrii clades and tickborne pathogens in humans exposed to tick bites, Italy, 2021. The matrix different vertebrate hosts, tick species, and geographic origin.