

## Emerging Tickborne Bacteria in Cattle from Colombia

Alejandro Ramírez-Hernández, Esteban Arroyave, Álvaro A. Faccini-Martínez, Heidy C. Martínez-Díaz, Paola Betancourt-Ruiz, Luz-Adriana Olaya-M, Elkin G. Forero-Becerra, Marylin Hidalgo, Lucas S. Blanton, David H. Walker

Author affiliations: Universidad de La Salle, Bogotá, Colombia (A. Ramírez-Hernández); University of Texas Medical Branch, Galveston, Texas, USA (A. Ramírez-Hernández, E. Arroyave, Á.A. Faccini-Martínez, L.S. Blanton, D.H. Walker); Fundación Universitaria de Ciencias de la Salud, Bogotá (Á.A. Faccini-Martínez); Servicios y Asesorías en Infectología Sai S.A.S., Bogotá (Á.A. Faccini-Martínez); Pontificia Universidad Javeriana, Bogotá (H.C. Martínez-Díaz, P. Betancourt-Ruiz, E.G. Forero-Becerra, M. Hidalgo); Universidad Libre, Cali, Colombia (L.-A. Olaya-M)

DOI: <https://doi.org/10.3201/eid2810.220657>

*Ehrlichia minasensis* is a new pathogenic bacterial species that infects cattle, and *Borrelia theileri* causes bovine borreliosis. We detected *E. minasensis* and *B. theileri* DNA in cattle from southwestern Colombia by using PCR. *E. minasensis* and *B. theileri* should be considered potential etiologies of febrile syndrome in cattle from Colombia.

*Ehrlichia* spp. are tickborne obligate intracellular bacteria and comprise different pathogenic species that affect both veterinary and public health (1). *Ehrlichia minasensis* was first detected in cattle and deer in Canada and later in cattle and *Rhipicephalus microplus* ticks from Brazil (2–4). Infected cattle manifest signs that include fever, lethargy, depression, and anorexia (3,4). *Borrelia theileri* belongs to the relapsing fever group of borreliae and causes bovine borreliosis, which is a mild febrile disease associated with lethargy, hemoglobinuria, and anemia (5). This spirochete is transmitted by *Rhipicephalus* (formerly *Boophilus*) sp. ticks and has been documented in Africa, Europe, Oceania, and South America (5,6). To our knowledge, *E. minasensis* or *B. theileri* infections have not been reported in cattle from Colombia.

During September and October 2017, we collected blood samples from 30 bovines with tick parasitism in El Tambo and Santander de Quilichao municipalities, Cauca department, Colombia (Appendix Figure, <https://wwwnc.cdc.gov/EID/article/28/10/22-0657-App1.pdf>). We extracted DNA from blood using the QIAGEN DNeasy Blood

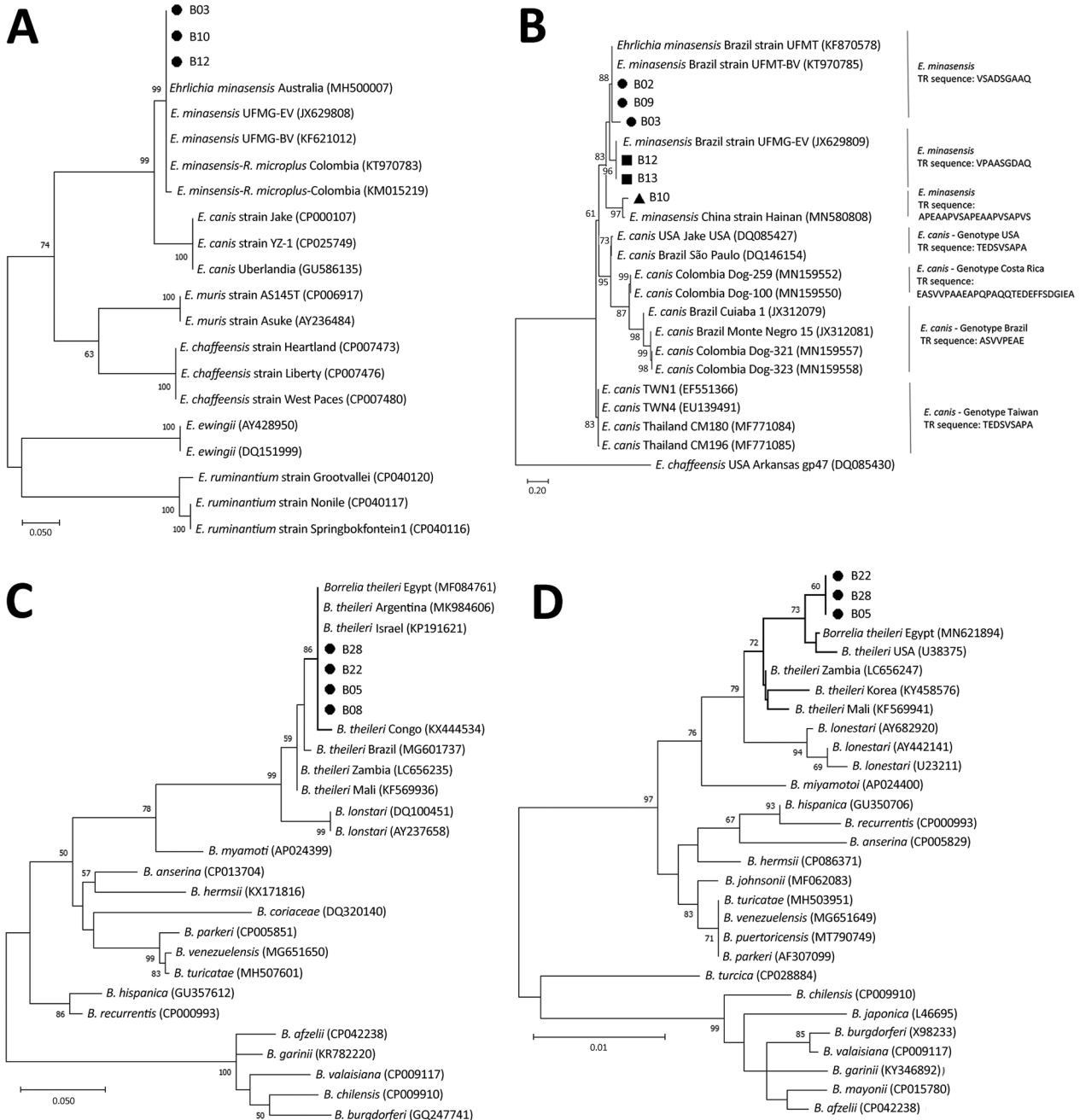
& Tissue Kit (<https://www.qiagen.com>), according to the manufacturer's instructions. We verified DNA quality using PCR amplification of the vertebrate cytochrome B gene *CYTB*. We subsequently performed PCR to detect *dsb* and *trp36* genes for *Ehrlichia* spp.; *flaB* and 16S rRNA genes for *Borrelia* spp.; and *rpoB*, *msp4*, and *msp1a* genes for *Anaplasma* spp. (Appendix Table). DNA samples that produced strong PCR bands underwent sequencing on an Applied Biosystems 3130/3130xl Genetic Analyzer (Thermo Fisher Scientific, <https://www.thermofisher.com>). The *msp1a* PCR products were poor quality and did not undergo sequencing. We aligned sequences using GeneStudio (GeneStudio, Inc., <https://genestudio-pro.software.informer.com>) and performed multiple sequence alignments using the EMBL-European Bioinformatics Institute tools MUSCLE (for *Ehrlichia* spp.) and ClustalW (for *Borrelia* and *Anaplasma* spp.) (<https://www.clustal.org>). Phylogenetic analyses were performed with MEGA X software (<https://www.megasoftware.net>). We generated phylogenetic trees for *dsb*, *flaB*, and 16S rRNA genes and Trp36 protein using the maximum-likelihood estimation method. All procedures were approved by the Pontificia Universidad Javeriana Ethics Committee in Colombia.

We detected *CYTB* in all samples. We detected the *dsb* gene in 10% (3/30) and *trp36* in 20% (6/30) of samples. The *flaB* gene was detected in 13.3% (4/30), and the 16S rRNA gene was detected in 10% (3/30) of samples. The *rpoB* gene was amplified in 90% (27/30), *msp4* was amplified in 83.3% (25/30), and *msp1a* was amplified in 83.3% (25/30) of samples. We performed phylogenetic analyses of 3 sequences for *dsb* (GenBank accession nos. ON209405–7), 6 sequences for Trp36 protein (inferred from GenBank accession nos. OL513405–10), 3 sequences for the 16S rRNA gene (GenBank accession nos. ON112216–8), 4 sequences for *flaB* (GenBank accession nos. ON135431–4); 6 sequences for *rpoB* (GenBank accession nos. ON209412–7), and 4 sequences for *msp4* (GenBank accession nos. ON209408–11).

Phylogenetic analyses showed that our *dsb* gene sequences clustered with *E. minasensis dsb* sequences from Brazil, Australia, and Colombia (Figure, panel A). The greater genetic diversity of Trp36 protein compared with *dsb* provided more detailed characterization of *Ehrlichia* sp. genotypes. Our Trp36 sequences clustered with 3 sequences from Brazil and a recently described *E. minasensis* strain from China isolated from *Haemaphysalis hystricis* ticks (Figure, panel B). The *flaB* and 16S rRNA genes clustered with *B. theileri* sequences (Figure, panels C, D).

Bootstrap values were 86% for *flaB* and 72% for the 16S rRNA gene. The *flaB* sequences grouped with sequences from Argentina, Republic of the Congo,

Egypt, and Israel (Figure, panel C). The 16S rRNA gene sequences grouped independently but close to sequences from Egypt and the United States (Figure,



**Figure.** Phylogenetic analysis of emerging tickborne bacteria in cattle from Colombia. Phylogenetic trees are shown for *dsb* genes (A), Trp36 proteins (amino acid sequences) (B), *flaB* genes (C), and 16S rRNA genes (D). We performed PCR on blood samples from cattle in El Tambo and Santander de Quilichao, Cauca department, Colombia to detect *dsb* and *trp36* genes for *Ehrlichia* sp.; *flaB* and 16S rRNA genes for *Borrelia* sp.; and *rpoB*, *msp4*, and *msp1a* genes for *Anaplasma* sp. We generated phylogenetic trees using the maximum-likelihood method and Tamura 3-parameter model with a gamma distribution parameter of 0.28 to compare evolutionary relationships between our sequences and publicly available sequences from Genbank (accession numbers indicated on trees). We applied bootstrap tests using 1,000 replicates; bootstrap values are shown at key nodes. The ●, ■, and ▲ symbols represent the differential clustering of sequences obtained in this study. Scale bars indicate nucleotide substitutions per site.

panel D). We confirmed *A. marginale* using identity analysis (100% identical to GenBank sequences; accession nos. CP023731, CP006846, CP001079, CP000030, and AF428086) of *rpoB* and *msp4* genes. Co-infection with *E. minasensis* and *A. marginale* was confirmed in 6 animals from El Tambo. Co-infection with *B. theileri* and *A. marginale* was documented in 1 animal from El Tambo and 1 animal from Santander de Quilichao.

These results showed the simultaneous circulation of *E. minasensis*, *B. theileri*, and *A. marginale* in bovids from Cauca department, Colombia. In Latin America, *E. minasensis* has been identified in Brazil (7) and Colombia (found in *R. microplus* ticks) (8), and *B. theileri* has been found in Argentina (6), Mexico (9), and Brazil (10). The *R. microplus* tick is likely the main vector for both pathogens in these regions and has been confirmed by molecular detection of *E. minasensis* in tick specimens collected from the same animals (H.C. Martínez-Díaz, unpub. data) and various reports in Latin America for *B. theileri* (9,10). Despite the lack of clinical signs in these animals, tick-borne infections caused by these pathogenic bacteria often occur as subclinical infections or with intermittent clinical manifestations. *E. minasensis* and *B. theileri* infections, either separately or as co-infections, may be more frequent than previously recognized and should be considered potential etiologies of febrile syndrome in cattle from this and other regions of Colombia.

### Acknowledgments

We thank all personnel involved in sample collection in Cauca, Colombia.

This research was supported by COLCIENCIAS, Colombia (code no. 120374455209) and the Fogarty International Center, National Institute of Allergy and Infectious Diseases, National Institutes of Health (award no. 5D43TW010331-05). Content is solely the responsibility of the authors and does not necessarily represent the official views of the National Institutes of Health.

### About the Author

Dr. Ramírez-Hernández is a researcher at Universidad de La Salle, Bogotá D.C., Colombia. His research interests focus on ticks, fleas, and ecoepidemiology of tickborne and fleaborne diseases.

### References

1. Ismail N, McBride JW. Tick-borne emerging infections: ehrlichiosis and anaplasmosis. *Clin Lab Med.* 2017;37:317–40. <https://doi.org/10.1016/j.cll.2017.01.006>
2. Cabezas-Cruz A, Zweygarth E, Vancová M, Broniszewska M, Grubhoffer L, Passos LMF, et al. *Ehrlichia minasensis* sp. nov., isolated from the tick *Rhipicephalus microplus*. *Int J Syst Evol Microbiol.* 2016;66:1426–30. <https://doi.org/10.1099/ijsem.0.000895>
3. Moura de Aguiar D, Pessoa Araújo Junior J, Nakazato L, Bard E, Aguilar-Bultet L, Vorimore F, et al. Isolation and characterization of a novel pathogenic strain of *Ehrlichia minasensis*. *Microorganisms.* 2019;7:528. <https://doi.org/10.3390/microorganisms7110528>
4. Aguiar DM, Ziliani TF, Zhang X, Melo AL, Braga IA, Witter R, et al. A novel *Ehrlichia* genotype strain distinguished by the TRP36 gene naturally infects cattle in Brazil and causes clinical manifestations associated with ehrlichiosis. *Ticks Tick Borne Dis.* 2014;5:537–44. <https://doi.org/10.1016/j.ttbdis.2014.03.010>
5. Elelu N. Tick-borne relapsing fever as a potential veterinary medical problem. *Vet Med Sci.* 2018;4:271–9. <https://doi.org/10.1002/vms3.108>
6. Morel N, De Salvo MN, Cicuttin G, Rossner V, Thompson CS, Mangold AJ, et al. The presence of *Borrelia theileri* in Argentina. *Vet Parasitol Reg Stud Rep.* 2019;17:100314. <https://doi.org/10.1016/j.vprsr.2019.100314>
7. Cabezas-Cruz A, Zweygarth E, Aguiar DM. *Ehrlichia minasensis*, an old demon with a new name. *Ticks Tick Borne Dis.* 2019;10:828–9. <https://doi.org/10.1016/j.ttbdis.2019.03.018>
8. Miranda J, Mattar S. Molecular detection of *Anaplasma* sp. and *Ehrlichia* sp. in ticks collected in domestic animals, Colombia. *Trop Biomed.* 2015;32:726–35.
9. Smith RD, Brener J, Osorno M, Ristic M. Pathobiology of *Borrelia theileri* in the tropical cattle tick, *Boophilus microplus*. *J Invertebr Pathol.* 1978;32:182–90. [https://doi.org/10.1016/0022-2011\(78\)90028-9](https://doi.org/10.1016/0022-2011(78)90028-9)
10. Martins JR, Ceresér VH, Corrêa BL, Smith RD. *Borrelia theileri*: observação em carrapatos do gênero *Boophilus microplus* no município de Guaíba, RS, Brasil. *Ciência Rural, Santa Maria.* 1996;26:447–50. <https://doi.org/10.1590/S0103-84781996000300018>

Address for correspondence: David H. Walker, Department of Pathology, University of Texas Medical Branch, 301 University Blvd, Galveston, TX, 77555-0609, USA; email: dwalker@utmb.edu

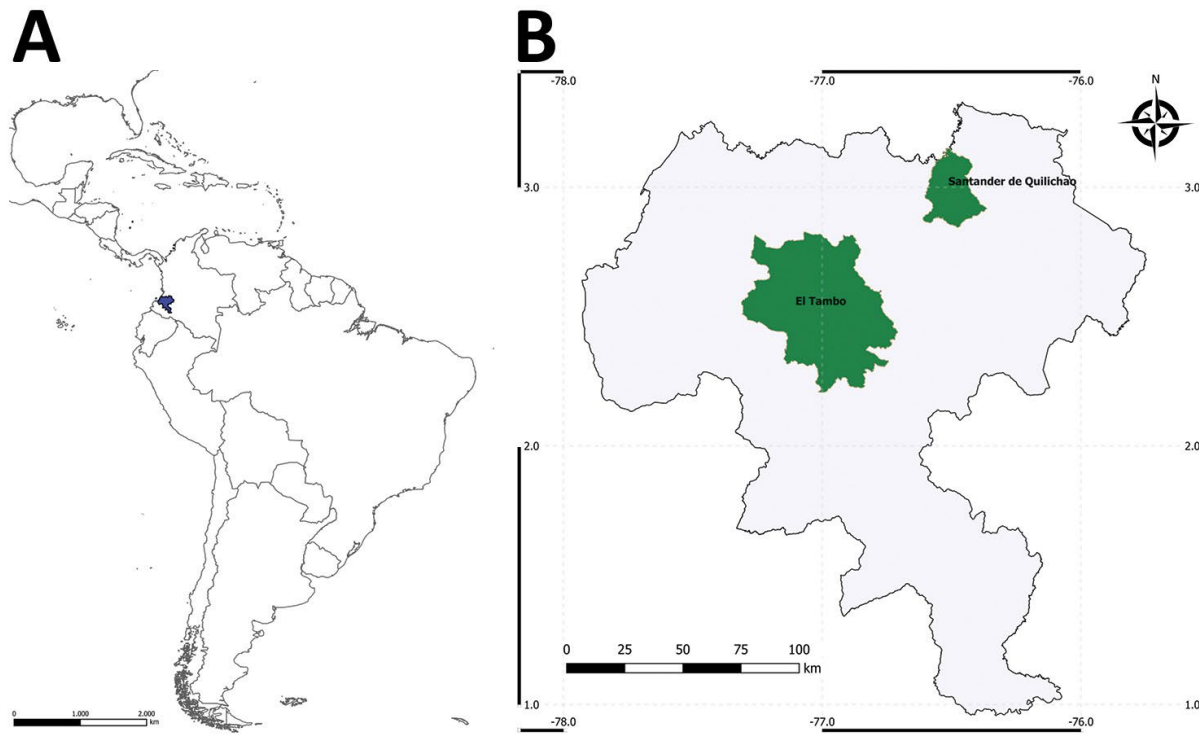
# Emerging Tickborne Bacteria in Cattle from Colombia

## Appendix

**Appendix Table.** List of PCR primers used to identify emerging tickborne bacteria in cattle from Colombia

| Target gene               | Primer sets                | Sequence (5'-3')                  | Annealing temperature (°C) | References |
|---------------------------|----------------------------|-----------------------------------|----------------------------|------------|
| <i>CYTb</i> *             | Cyt bF                     | CCCCTCAGAATGATATTTGTCCTCA         | 60                         | (1)        |
|                           | Cyt bR                     | CCATCCAACATCTCAGCATGATGAAA        |                            |            |
| <i>dsb</i> (heminested)   | Dsb-330                    | GATGATGTCTGAAGATATGAAACAAAT       | 52                         | (2,3)      |
|                           | (first reaction)           |                                   |                            |            |
|                           | Dsb-380                    | ATTTTTAGRGATTTTCCAATACTTGG        |                            |            |
|                           | (second reaction)          |                                   |                            |            |
| <i>trp36</i> (heminested) | Dsb-720                    | CTATTTTACTTCTTAAAGTTGATAWATC      | 45                         | (4,5)      |
|                           | (both reactions)           |                                   |                            |            |
|                           | TRP36-F2                   | TTTAAAACAAAATTAACACACTA           |                            |            |
|                           | (first reaction)           |                                   |                            |            |
| <i>flaB</i> (nested)      | TRP36-DF (second reaction) | CACACTAAAATGTATAATAAAGC           | 55                         | (6)        |
|                           | (second reaction)          |                                   |                            |            |
|                           | TRP36-R1                   | AAGATTAECTTAATACTCAATATTACT       |                            |            |
|                           | (both reactions)           |                                   |                            |            |
| <i>16S rRNA</i> (nested)  | FlaLL                      | ACATATTCAGATGCAGACAGAGGT          | 55                         | (7)        |
|                           | (first reaction)           |                                   |                            |            |
|                           | FlaRL                      | GCAATCATAGCCATTGCAGATTGT          |                            |            |
|                           | (first reaction)           |                                   |                            |            |
|                           | FlaLS                      | AACAGCTGAAGAGCTTGGAATG            |                            |            |
|                           | (second reaction)          |                                   |                            |            |
| <i>rpoB</i>               | FlaRS                      | CTTTGATCACTTATCATTCTAATAGC        | 56                         | (8)        |
|                           | (second reaction)          |                                   |                            |            |
|                           | B1                         | CAGTGCCTTAAGCATGC                 |                            |            |
|                           | (first reaction)           |                                   |                            |            |
|                           | B8                         | CCTTAAATACCTTCTCC                 |                            |            |
|                           | (first reaction)           |                                   |                            |            |
| <i>msp4</i>               | B3                         | GCAGCTAAGAATCTTCCGCAATGG          | 59                         | (9)        |
|                           | (second reaction)          |                                   |                            |            |
|                           | B6                         | CAACCATGCAGCACCTGTATAT            |                            |            |
|                           | (second reaction)          |                                   |                            |            |
| <i>msp1a</i>              | Ana-rpoBF                  | GCTGTTCTAGGCTYTCTTACGCGA          | 60                         | (9)        |
|                           | Ana-rpoBR                  | AATCRAGCCAVGAGCCCCTRTAWGG         |                            |            |
| <i>msp1a</i>              | MSP45                      | GGGAGCTCCTATGAATTACAGAGAATTGTTTAC | 68                         | (9)        |
|                           | MSP43                      | CCGGATCCTTAGCTGAACAGGAATCTTGC     |                            |            |
| <i>msp1a</i>              | MSP1aP                     | GCATTACAACGCAACGCTTGAG            | 68                         | (9)        |
|                           | MSP1a3                     | GCTTTACGCCGCCCTGCGCC              |                            |            |

\*Primer set was developed to detect cytochrome B genes in multiple vertebrate species, including cattle. Primer names were not provided in the original publication.



**Appendix Figure.** Maps showing locations where emerging tickborne bacteria *Ehrlichia minasensis* and *Borrelia theileri* were found in cattle from El Tambo and Santander de Quilichao municipalities in Cauca department, Colombia. We collected blood samples from cattle and performed PCR analysis to detect different genes specific for *Ehrlichia minasensis*, *Borrelia theileri*, and *Anaplasma* sp. A) Blue area indicates Cauca department within Colombia. B) Green areas indicate El Tambo and Santander de Quilichao municipalities within Cauca department, Colombia.

## References

1. Boakye DA, Tang J, Truc P, Merriweather A, Unnasch TR. Identification of bloodmeals in haematophagous *Diptera* by cytochrome B heteroduplex analysis. *Med Vet Entomol.* 1999;13:282–7. [PubMed https://doi.org/10.1046/j.1365-2915.1999.00193.x](https://doi.org/10.1046/j.1365-2915.1999.00193.x)
2. Doyle CK, Labruna MB, Breitschwerdt EB, Tang YW, Corstvet RE, Hegarty BC, et al. Detection of medically important *Ehrlichia* by quantitative multicolor TaqMan real-time polymerase chain reaction of the *dsb* gene. *J Mol Diagn.* 2005;7:504–10. [PubMed https://doi.org/10.1016/S1525-1578\(10\)60581-8](https://doi.org/10.1016/S1525-1578(10)60581-8)
3. Almeida AP, Souza TD, Marcili A, Labruna MB. Novel *Ehrlichia* and *Hepatozoon* agents infecting the crab-eating fox (*Cerdocyon thous*) in southeastern Brazil. *J Med Entomol.* 2013;50:640–6. [PubMed https://doi.org/10.1603/ME12272](https://doi.org/10.1603/ME12272)



4. Aguiar DM, Zhang X, Melo AL, Pacheco TA, Meneses AM, Zanutto MS, et al. Genetic diversity of *Ehrlichia canis* in Brazil. *Vet Microbiol.* 2013;164:315–21. [PubMed](#)  
<https://doi.org/10.1016/j.vetmic.2013.02.015>
5. Aguiar DM, Ziliani TF, Zhang X, Melo AL, Braga IA, Witter R, et al. A novel *Ehrlichia* genotype strain distinguished by the *TRP36* gene naturally infects cattle in Brazil and causes clinical manifestations associated with ehrlichiosis. *Ticks Tick Borne Dis.* 2014;5:537–44. [PubMed](#)  
<https://doi.org/10.1016/j.ttbdis.2014.03.010>
6. Moore VA 4th, Varela AS, Yabsley MJ, Davidson WR, Little SE. Detection of *Borrelia lonestari*, putative agent of southern tick-associated rash illness, in white-tailed deer (*Odocoileus virginianus*) from the southeastern United States. *J Clin Microbiol.* 2003;41:424–7. [PubMed](#)  
<https://doi.org/10.1128/JCM.41.1.424-427.2003>
7. Takhampunya R, Thaloengsok S, Tippayachai B, Promsathaporn S, Leepitakrat S, Gross K, et al. Retrospective survey of *Borrelia* spp. from rodents and ticks in Thailand. *J Med Entomol.* 2021;58:1331–44. [PubMed](#) <https://doi.org/10.1093/jme/tjaa279>
8. Dahmani M, Davoust B, Rousseau F, Raoult D, Fenollar F, Mediannikov O. Natural Anaplasmataceae infection in *Rhipicephalus bursa* ticks collected from sheep in the French Basque Country. *Ticks Tick Borne Dis.* 2017;8:18–24. [PubMed](#) <https://doi.org/10.1016/j.ttbdis.2016.09.009>
9. de la Fuente J, Van Den Bussche RA, Kocan KM. Molecular phylogeny and biogeography of North American isolates of *Anaplasma marginale* (Rickettsiaceae: Ehrlichieae). *Vet Parasitol.* 2001;97:65–76. [PubMed](#) [https://doi.org/10.1016/S0304-4017\(01\)00378-8](https://doi.org/10.1016/S0304-4017(01)00378-8)