

Lyssaviruses in Insectivorous Bats, South Africa, 2003–2018

Jessica Coertse, Colyn S. Grobler, Claude T. Sabeta, Ernest C.J. Seamark, Teresa Kearney, Janusz T. Paweska, Wanda Markotter

We detected 3 lyssaviruses in insectivorous bats sampled in South Africa during 2003–2018. We used phylogenetic analysis to identify Duvenhage lyssavirus and a potentially new lyssavirus, provisionally named Matlo bat lyssavirus, that is related to West Caucasian bat virus. These new detections highlight that much about lyssaviruses remains unknown.

Lyssaviruses cause fatal encephalitic disease in mammals; 6 viral species have been implicated in human deaths (1). Bats are the primary hosts for members of the *Lyssavirus* genus, which belongs to the family *Rhabdoviridae*. Researchers have described 17 lyssavirus species, and a putative species is awaiting formal classification (1). The genus can be divided into ≥ 3 phylogroups on the basis of genetic, immunogenic, and pathogenic properties (2). Rabies vaccines and postexposure prophylaxis protect against infection by members of phylogroup I but provide limited protection against phylogroups II or III (3).

In Africa, 6 lyssaviruses are in circulation: rabies virus, which is associated with terrestrial carnivores; Duvenhage virus (DUVV), which is associated with insectivorous bats, specifically the Egyptian slit-faced bat (*Nycteris thebaica*); Lagos bat virus, which is associated with various species of frugivorous bats; Mokola virus, for which the reservoir host is unknown; Shimon bat virus, which is associated with the striped leaf-nosed bat (*Macronycteris vittatus*); and Ikoma lyssavirus, for which the reservoir host is unknown (1). Only rabies virus, DUVV, and Mokola virus have

been associated with human deaths on the continent. Lyssavirus surveillance in Africa is inadequate. As a result, genetic diversity, geographic distribution, and host species associations of lyssaviruses are poorly understood (1). However, this information is crucial for making treatment decisions, especially in resource-limited settings (1).

We report the results of 16 years of surveillance of insectivorous bats in South Africa. We used genetic characterization to identify DUVV and a potential novel lyssavirus from phylogroup III.

The Study

During 2003–2018, we tested 605 insectivorous bats (Appendix Tables 1, 2, <https://wwwnc.cdc.gov/EID/article/26/12/20-3592-App1.pdf>) of 41 species across South Africa (Figure 1; Appendix Tables 1, 2). Most bats were collected as part of a broader biosurveillance program in collaboration with bat taxonomists for species identification and classification. Among the bats collected, 562 appeared healthy and 28 were dead. Another 12 exhibited signs of disease or abnormal behavior, and 3 had been involved in human contact; we submitted these samples for rabies testing.

We anesthetized the sampled bats with isoflurane inhalant (Safeline Pharmaceuticals, <https://safeline.co.za>), exsanguinated them by cardiac puncture, and then performed full necropsies. We identified bats on the basis of morphologic (4) and genetic characteristics (5). The sampling protocol was approved by the University of Pretoria Animal Ethics Committee (approval no. EC054-14). Permission to conduct research was obtained from the Department of Agriculture, Land Reform and Rural Development (formerly Department of Agriculture, Forestry, and Fisheries) of the Republic of South Africa under Section 20 of the Animal Diseases Act 1984 with additional provincial permits granted (Appendix Table 3).

We extracted total RNA from the bats' brain material and subjected it to real-time reverse transcription PCR selective for 126 bp of the nucleoprotein gene

Author affiliations: University of Pretoria, Pretoria, South Africa (J. Coertse, C.S. Grobler, T. Kearney, J.T. Paweska, W. Markotter); National Institute of Communicable Diseases of the National Health Laboratory Service, Sandringham, South Africa (J. Coertse, J.T. Paweska); Onderstepoort Veterinary Institute, Pretoria (C.T. Sabeta); AfricanBats NPC, Pretoria (E.C.J. Seamark, T. Kearney); Ditsong National Museum of Natural History, Pretoria (T. Kearney)

DOI: <https://doi.org/10.3201/eid2612.203592>

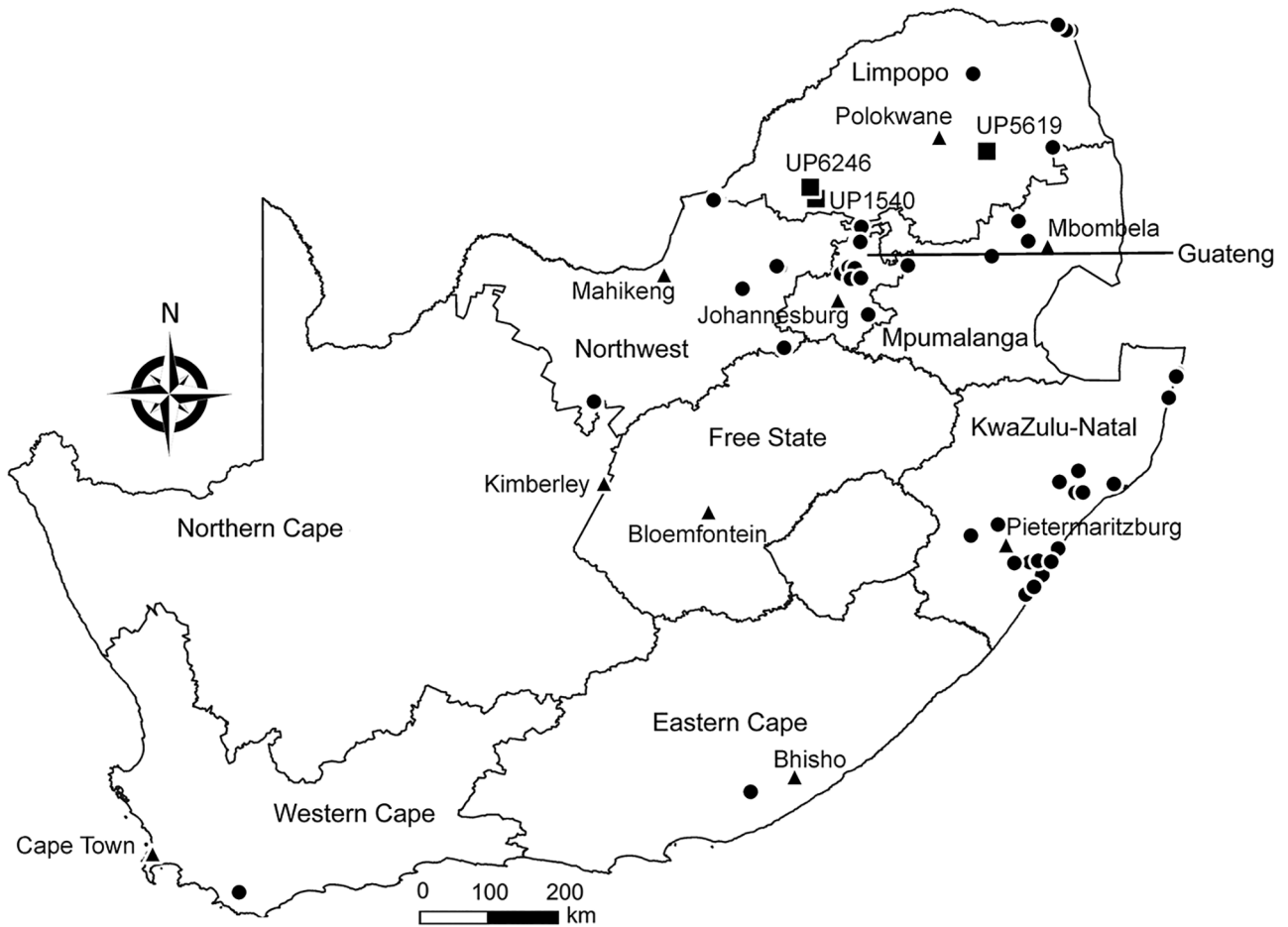


Figure 1. Locations of bat collection sites, South Africa, 2003–2018. Circles indicate collection sites, squares indicate sites with lyssavirus-positive bats, and triangles indicate capitals.

(6). Samples from 3 bats tested positive for lyssavirus RNA; we sequenced the amplicons (7). One of these samples came from an Egyptian slit-faced bat (sample no. UP1540) collected in 2012 from the Rooiberg area, Limpopo. This bat, which was collected by members of a bat interest group in August 2012, tested positive for DUVV (Figure 1). We also obtained sequences of a potentially novel lyssavirus in samples from 2 apparently healthy Natal long-fingered bats (*Miniopterus natalensis*, sample nos. UP5619 and UP6246); these sequences were distantly related to West Caucasian bat virus (WCBV). We collected these samples from Matlapitsi cave, Limpopo, in 2015 and Madimatle cave, Limpopo, in 2016 (Figure 1).

To infer the phylogeny, we used the complete nucleoprotein gene sequences of the 3 lyssaviruses according to a method described previously (8). We used Bayesian inference to compare our samples with representative sequences from GenBank (Appendix Table 4). We analyzed the dataset with BEAST (9); we used the general time-reversible substitution

model as determined by *jmodeltest2* (10), invariant sites, and gamma distribution. We assumed an underlying coalescent process with constant population size and Markov chain Monte Carlo chains of 50 million generations.

The results indicated that the sequences from Natal long-fingered bats were most closely related to, but distinct from, WCBV (Figure 2); they might belong to a novel species of *Lyssavirus*, provisionally called Matlo bat lyssavirus (MBLV). These 2 novel sequences had a shared nucleotide identity of 99.2%. Compared with other lyssaviruses, they shared the highest nucleotide identity with WCBV (80.9%–81%) and the lowest with Ikoma lyssavirus (70.5%). The DUVV sequence was 91.6%–99.3%, similar to previously described DUVV sequences (Table).

Conclusions

From 2003–2018, we detected 3 lyssavirus infections in insectivorous bats from South Africa, indicating

active but low-level circulation of lyssaviruses in this population. The Egyptian slit-faced bat is the only species of bat that has been conclusively linked with DUVV (11). Our finding is 1 of only 6 known DUVV cases, 3 of which caused fatal infection in humans (1). This finding suggests that these infections are under-reported. The Egyptian slit-faced bat is widely distributed in Africa. It co-roosts with bats of various other species and switches roosts frequently, implicating a wider potential to infect other species (12).

We detected a novel lyssavirus, MBLV, that belongs to phylogroup III and is most closely related to a sequence of WCBV that was isolated from a common long-fingered bat (*Miniopterus schreibersii*) from the Russian Caucasus in 2002 (13). The nucleotide identity for MBLV falls within the species demarcation criteria determined by the International Committee for the

Taxonomy of Viruses of 80%–82% for the complete nucleoprotein gene (2). If MBLV is not pronounced a new lyssavirus species, this virus would be a distinct lineage of WCBV. In 2006–2007, detection of virus neutralizing antibodies (seroprevalence 17%–26%) against WCBV in *Miniopterus* bats in Kenya spurred speculation that WCBV, or a closely related virus, was circulating in Africa (14). The bat family Miniopteridae, which includes ≥ 23 species in Africa, does not host known lyssaviruses in phylogroup I or II (12). The long-fingered bats are widely distributed throughout Africa (12).

Models have demonstrated that WCBV can cause fatal encephalitis in animals; commercial human and veterinary vaccines do not offer significant protection (3). Considering genetic diversity and phylogenetic grouping, we speculate that current vaccines will probably provide little to no protection against

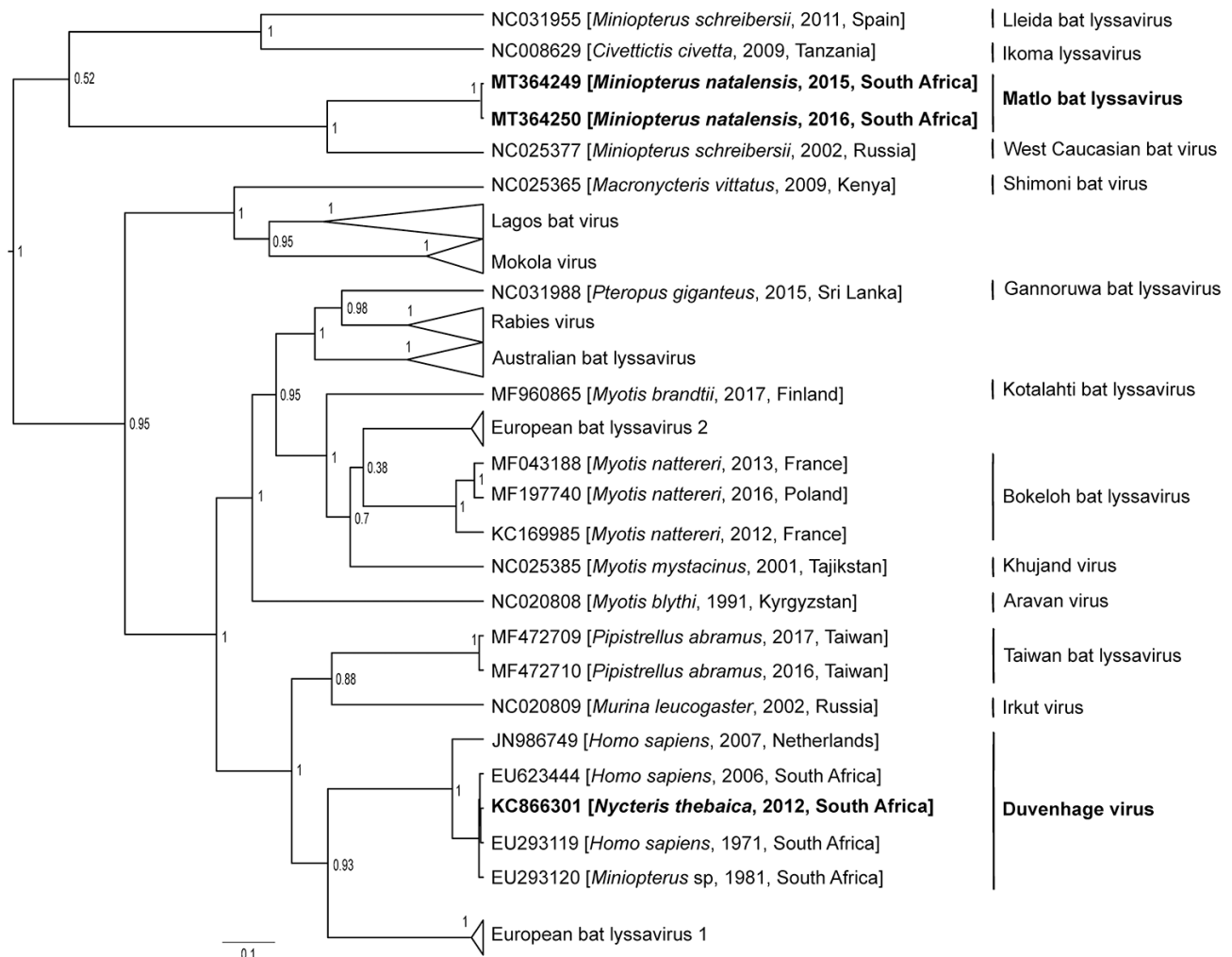


Figure 2. Phylogenetic reconstruction by Bayesian inference of nucleoprotein gene sequences of lyssavirus sequences from bats collected in South Africa, 2003–2018 (bold), and other representative lyssaviruses. Node numbers indicate posterior probabilities. GenBank accession number, host species, year of detection, and country of origin are indicated for each sequence. Scale bar indicates number of substitutions per site.

Table. Genetic similarities of 3 lyssaviruses found in insectivorous bats in South Africa, 2003–2018, and representative lyssavirus species from GenBank*

| Virus | % Similarity | | | | | |
|---------------------------|-------------------|------------|-------------------|------------|-------------------|------------|
| | UP5619 (MT364249) | | UP6246 (MT364250) | | UP1540 (KC866301) | |
| | Nucleotide | Amino acid | Nucleotide | Amino acid | Nucleotide | Amino acid |
| Aravan virus | 72.7 | 83.3 | 72.6 | 84.0 | NA | NA |
| Australian bat lyssavirus | 72.7–74.4 | 82–83.3 | 72.8–74.7 | 82.4–83.7 | NA | NA |
| Bokeloh bat lyssavirus | 72.9–73.3 | 81.5 | 73–73.4 | 81.8 | NA | NA |
| European bat lyssavirus 1 | 71.1–72.4 | 82.2–82.4 | 71.2–72.5 | 82.7–82.9 | NA | NA |
| European bat lyssavirus 2 | 71–72.4 | 80.0–80.7 | 71–72.4 | 80.2–80.9 | NA | NA |
| Gannoruwa bat lyssavirus | 70.6 | 83.1 | 70.6 | 83.5 | NA | NA |
| Ikoma lyssavirus | 70.5 | 79.5 | 70.5 | 79.5 | NA | NA |
| Irkut virus | 72 | 83.3 | 72.4 | 83.8 | NA | NA |
| Khujand virus | 72.5 | 81.3 | 72.5 | 81.8 | NA | NA |
| Kotalahti bat lyssavirus | 71.9 | 81.8 | 71.9 | 82.4 | NA | NA |
| Lagos bat virus | 71.1–74.2 | 82.6–84 | 71.3–74.5 | 83.1–84.4 | NA | NA |
| Lleida bat lyssavirus | 71.3 | 81.5 | 71.4 | 81.5 | NA | NA |
| Mokola virus | 72.2–73.8 | 82.4–83.7 | 72.3–73.7 | 82.8–84.2 | NA | NA |
| Rabies virus | 71.1–72.4 | 80.6–82 | 71–72.2 | 80.8–82.4 | NA | NA |
| Shimoni bat virus | 73.1 | 83.5 | 73.6 | 84.2 | NA | NA |
| Taiwan bat lyssavirus | 73.6–73.9 | 83.3 | 73.7–73.9 | 83.8 | NA | NA |
| West Caucasian bat virus | 80.9 | 95.5 | 81 | 96.2 | NA | NA |
| DUVVs | | | | | | |
| EU293119 | 72.9 | 84 | 72.9 | 84.4 | 99.3 | 99.5 |
| EU293120 | 72.9 | 84 | 72.9 | 84.4 | 98.5 | 99.5 |
| JN986749 | 73 | 84 | 73 | 84.4 | 91.6 | 99.3 |
| EU623444 | 72.8 | 84 | 72.8 | 84.4 | 98.6 | 99.3 |

*GenBank accession numbers are shown for sequences from this study and reference DUVV sequences. DUVV, Duvenhage virus; NA, not applicable.

infection with MBLV (as with WCBV). Because of the lack of diagnostic capability in Africa (6), the potential threat of this virus is unknown. Continued surveillance and development of improved pharmaceuticals are necessary for the prevention of these infections. We observed a low prevalence (0.5%), similar to other lyssaviruses (1). Additional longitudinal surveillance, including serologic testing, among bats of this species and other potential hosts must be implemented to determine if Natal long-fingered bats are the reservoir host of MBLV. This study did not obtain equally representative samples of all bat species from all sampling sites; MBLV might exist in other bat species in South Africa.

In summary, the mechanisms of lyssavirus maintenance in bats is still unknown and could be influenced by various environmental and ecologic factors (1). Additional surveillance and comparative seroprevalence studies are needed to establish the host range and distribution of MBLV and other lyssaviruses. Although the public health impact of MBLV is currently unknown, DUVV can cause fatal infection and should be taken seriously. Surveillance is needed to understand the epidemiology and diversity of bat lyssaviruses and inform prevention efforts.

Acknowledgments

We thank the students and staff of the Centre for Viral Zoonoses, University of Pretoria, for technical assistance during fieldwork. We also thank the bat rehabilitator

community, the bat interest groups for submission of bats for testing, and the Ga Mafefe community in the Limpopo Province for supporting our research at Matlapitsi cave. All participants in this project were vaccinated against rabies according to the World Health Organization preexposure prophylaxis guidelines. We also thank Motjoli Resources, Aquila Steel, and Aquila Resources for their support and permission to conduct surveillance at Meletse.

This research is supported in part by the South African Research Chair Initiative (held by Wanda Markotter) of the Department of Science and Innovation and administered by the National Research Foundation of South Africa (UID: 98339). The National Research Foundation funded the equipment based at the DNA Sanger sequencing facility in the Faculty of Natural and Agricultural Sciences, University of Pretoria (UID: 78566). This research was also supported in part by Cooperative Agreement no. 5 NU2GGH001874-02-00, funded by the US Centers for Disease Control and Prevention. These contents are solely the responsibility of the authors. C.S.G. was additionally supported by the Poliomyelitis Research Foundation (grant no. 18/54).

About the Author

Dr. Coertse is a postdoctoral fellow in the Centre for Viral Zoonoses at the University of Pretoria. Her research interests are focused on zoonoses, particularly those related to lyssaviruses and bats.

References

1. Markotter W, Coertse J. Bat lyssaviruses. *Rev Sci Tech*. 2018;37:385–400. <https://doi.org/10.20506/rst.37.2.2809>
2. Walker PJ, Blasdel KR, Calisher CH, Dietzgen RG, Kondo H, Kurath G, et al.; ICTV Report Consortium. ICTV virus taxonomy profile: *Rhabdoviridae*. *J Gen Virol*. 2018;99:447–8. <https://doi.org/10.1099/jgv.0.001020>
3. Hanlon CA, Kuzmin IV, Blanton JD, Weldon WC, Manangan JS, Rupprecht CE. Efficacy of rabies biologics against new lyssaviruses from Eurasia. *Virus Res*. 2005; 111:44–54. <https://doi.org/10.1016/j.virusres.2005.03.009>
4. Meester J. Classification of southern African mammals. Pretoria (South Africa): Transvaal Museum Monograph; 1986. p. 1–359.
5. Folmer O, Black M, Hoeh W, Lutz R, Vrijenhoek R. DNA primers for amplification of mitochondrial cytochrome c oxidase subunit I from diverse metazoan invertebrates. *Mol Mar Biol Biotechnol*. 1994;3:294–9.
6. Coertse J, Weyer J, Nel LH, Markotter W. Reverse transcription recombinase polymerase amplification assay for rapid detection of canine associated rabies virus in Africa. *PLoS One*. 2019;14:e0219292. <https://doi.org/10.1371/journal.pone.0219292>
7. Coertse J, Weyer J, Nel LH, Markotter W. Improved PCR methods for detection of African rabies and rabies-related lyssaviruses. *J Clin Microbiol*. 2010;48:3949–55. <https://doi.org/10.1128/JCM.01256-10>
8. Markotter W, Kuzmin I, Rupprecht CE, Randles J, Sabeta CT, Wandeler AJ, et al. Isolation of Lagos bat virus from water mongoose. *Emerg Infect Dis*. 2006;12:1913–8. <https://doi.org/10.3201/eid1212.060514>
9. Drummond AJ, Suchard MA, Xie D, Rambaut A. Bayesian phylogenetics with BEAUti and the BEAST 1.7. *Mol Biol Evol*. 2012;29:1969–73. <https://doi.org/10.1093/molbev/mss075>
10. Darriba D, Taboada GL, Doallo R, Posada D. jModelTest 2: more models, new heuristics and parallel computing. *Nat Methods*. 2012;9:772–772. <https://doi.org/10.1038/nmeth.2109>
11. Foggin C. Rabies and rabies-related viruses in Zimbabwe: Historical, virological and ecological aspects. Harare (Zimbabwe): University of Zimbabwe; 1988. p. 186–221.
12. AfricanBats NPC. African Chiroptera report 2019. 2019 [cited 2020 Apr 13]. <https://africanbats.org/publication/african-chiroptera-report-2019>
13. Botvinkin AD, Poleschuk EM, Kuzmin IV, Borisova TI, Gazaryan SV, Yager P, et al. Novel lyssaviruses isolated from bats in Russia. *Emerg Infect Dis*. 2003;9:1623–5. <https://doi.org/10.3201/eid0912.030374>
14. Kuzmin IV, Niezgodna M, Franka R, Agwanda B, Markotter W, Beagley JC, et al. Possible emergence of West Caucasian bat virus in Africa. *Emerg Infect Dis*. 2008;14:1887–9. <https://doi.org/10.3201/eid1412.080750>

Address for correspondence: Wanda Markotter, Centre for Viral Zoonoses, Department of Medical Virology, Faculty of Health Sciences, Private Bag X323, Room 2-66, Pathology Bldg, Prinshof Campus, University of Pretoria, Gezina, Pretoria 0031, South Africa; email: wanda.markotter@up.ac.za

EID Podcast Plague in a Dog

Some might think the plague is a relic of the Middle Ages. But *Yersinia pestis* still lingers, and has even infected man's best friend.

In this EID podcast, Dr. Joshua Daniels, a bacteriologist at Colorado State University's Veterinary Diagnostic Laboratory, explains how doctors diagnosed this unusual infection.

Visit our website to listen: **EMERGING INFECTIOUS DISEASES**
<https://tools.cdc.gov/medialibrary/index.aspx#/media/id/398724>

Lyssaviruses in Insectivorous Bats, South Africa, 2003–2018

Appendix

Appendix Table 1. Bats collected for lyssavirus surveillance, South Africa, 2003–2018

| Laboratory no.* | Collection date | Bat species† | ID method | Province | Coordinates | Site |
|-----------------|-----------------|------------------------------------|----------------|---------------|-----------------------|---|
| UP 0004 | 2004 Aug 20 | <i>Neoromicia (Laephotis) nana</i> | Morphologic | Mpumalanga | -34.472989, 19.668606 | Laughing Waters Farm, Nelspruit |
| UP 0005 | 2004 Aug 21 | <i>Neoromicia (Laephotis) nana</i> | Morphologic | Mpumalanga | -34.472989, 19.668606 | Laughing Waters Farm, Nelspruit |
| UP 0006 | 2004 Aug 21 | <i>Neoromicia (Laephotis) nana</i> | Morphologic | Mpumalanga | -34.472989, 19.668606 | Laughing Waters Farm, Nelspruit |
| UP 0012 | 2004 Aug 26 | <i>Pipistrellus hesperidus</i> | Genetic | Eastern Cape | -33.069128, 26.816924 | Andries Vosloo Kudu Reserve, Grahamstown |
| UP 0013 | 2004 Aug 26 | <i>Pipistrellus hesperidus</i> | Genetic | Eastern Cape | -33.069128, 26.816924 | Andries Vosloo Kudu Reserve, Grahamstown |
| UP 0014 | 2004 Aug 26 | <i>Pipistrellus hesperidus</i> | Genetic | Eastern Cape | -33.069128, 26.816924 | Andries Vosloo Kudu Reserve, Grahamstown |
| UP 0015 | 2004 Aug 26 | <i>Pipistrellus hesperidus</i> | Genetic | Eastern Cape | -33.069128, 26.816924 | Andries Vosloo Kudu Reserve, Grahamstown |
| UP 0016 | 2004 Aug 26 | <i>Pipistrellus hesperidus</i> | Genetic | Eastern Cape | -33.069128, 26.816924 | Andries Vosloo Kudu Reserve, Grahamstown |
| UP 0017 | 2004 Aug 26 | <i>Pipistrellus hesperidus</i> | Genetic | Eastern Cape | -33.069128, 26.816924 | Andries Vosloo Kudu Reserve, Grahamstown |
| UP 0018 | 2004 Aug 26 | <i>Pipistrellus hesperidus</i> | Genetic | Eastern Cape | -33.069128, 26.816924 | Andries Vosloo Kudu Reserve, Grahamstown |
| UP 0056, DM7842 | 2004 May 02 | <i>Nycteris thebaica</i> | Museum voucher | KwaZulu-Natal | -29.857855, 30.722425 | Shongeni Valley, Shongweni Nature Reserve |
| UP 0057, DM8002 | 2003 Feb 20 | <i>Otomops martiensseni</i> | Museum voucher | KwaZulu-Natal | -29.851041, 31.021642 | Durban |
| UP 0058 | 2004 Apr 15 | <i>Pipistrellus hesperidus</i> | Morphologic | KwaZulu-Natal | -28.735800, 31.136096 | Nkandla Forest Reserve, Nkandla |
| UP 0059, DM7838 | 2003 Nov 11 | <i>Nycteris thebaica</i> | Museum voucher | KwaZulu-Natal | -29.834418, 30.926404 | Westville |
| UP 0060 | 2004 Apr 15 | <i>Pipistrellus hesperidus</i> | Morphologic | KwaZulu-Natal | -28.735800, 31.136096 | Nkandla Forest Reserve, Nkandla |
| UP 0061, DM7906 | 2003 May 26 | <i>Scotophilus dinganii</i> | Museum voucher | KwaZulu-Natal | Not recorded | Not recorded |
| UP 0063 | 2004 Jun 17 | <i>Pipistrellus hesperidus</i> | Morphologic | KwaZulu-Natal | -30.036554, 30.896156 | Amanzimtoti |
| UP 0064, DM8013 | 2005 Feb 23 | <i>Pipistrellus hesperidus</i> | Museum voucher | KwaZulu-Natal | -27.559892, 32.664073 | Sodwana Bay National Park |
| UP 0065 | 2004 May 15 | <i>Rhinolophus darlingi</i> | Morphologic | KwaZulu-Natal | -30.310606, 30.664202 | Umzino |
| UP 0066, DM7910 | 2003 Apr 22 | <i>Chaerephon (Mops) pumilus</i> | Museum voucher | KwaZulu-Natal | -29.839963, 30.840120 | Pinetown |
| UP 0067, DM7913 | 2002 Sep 01 | <i>Chaerephon (Mops) pumilus</i> | Museum voucher | KwaZulu-Natal | -30.115940, 30.837709 | Illovo |
| UP 0068, DM8004 | 2004 May 19 | <i>Scotophilus dinganii</i> | Museum voucher | KwaZulu-Natal | -29.851041, 31.021642 | Durban |
| UP 0070, DM7914 | 2004 May 27 | <i>Otomops martiensseni</i> | Museum voucher | KwaZulu-Natal | -29.851041, 31.021642 | Durban |
| UP 0071, DM8382 | 2005 May 15 | <i>Miniopterus natalensis</i> | Museum voucher | KwaZulu-Natal | -28.582087, 31.401064 | Melmoth |
| UP 0082, DM8376 | 2005 May 15 | <i>Rhinolophus clivosus</i> | Museum voucher | KwaZulu-Natal | -28.582087, 31.401064 | Melmoth |
| UP 0084, DM8373 | 2005 May 14 | <i>Rhinolophus clivosus</i> | Museum voucher | KwaZulu-Natal | -28.882841, 31.464582 | Eshowe |

| Laboratory no.* | Collection date | Bat species† | ID method | Province | Coordinates | Site |
|---------------------|-----------------|---------------------------------------|----------------|---------------|--------------------------|---------------|
| UP 0085, DM7848 | 2005 Jun 24 | <i>Scotophilus dinganii</i> | Museum voucher | KwaZulu-Natal | -29.851041, 31.021642 | Durban |
| UP 0098, DM8439 | 2005 Aug 08 | <i>Chaerephon (Mops) pumilus</i> | Museum voucher | KwaZulu-Natal | -28.764711, 31.897268 | Empangeni |
| UP 0099, DM8381 | 2005 May 15 | <i>Miniopterus natalensis</i> | Museum voucher | KwaZulu-Natal | -28.582087, 31.401064 | Melmoth |
| UP 0100, DM8383 | 2005 May 15 | <i>Miniopterus natalensis</i> | Museum voucher | KwaZulu-Natal | -28.582087, 31.401064 | Melmoth |
| UP 0101, DM7915 | 2005 Jun 24 | <i>Neoromicia (Laephotis) nana</i> | Museum voucher | KwaZulu-Natal | -29.851041, 31.021642 | Durban |
| UP 0102, DM8379 | 2005 May 15 | <i>Rhinolophus clivosus</i> | Museum voucher | KwaZulu-Natal | -28.582087, 31.401064 | Melmoth |
| UP 0103, DM8384 | 2005 May 15 | <i>Miniopterus natalensis</i> | Museum voucher | KwaZulu-Natal | -28.582087, 31.401064 | Melmoth |
| UP 0104 | 2004 Sep 28 | <i>Rhinolophus hildebrandtii</i> s.l. | Morphologic | Mpumalanga | Not recorded | Not recorded |
| UP 0109, DM7886 | 2004 Sep 28 | <i>Rhinolophus hildebrandtii</i> s.l. | Museum voucher | Mpumalanga | Not recorded | Not recorded |
| UP 0111, DM7909 | 2004 May 17 | <i>Otomops martiensseni</i> | Museum voucher | KwaZulu-Natal | -29.851041, 31.021642 | Durban |
| UP 0115, DM8369 | 2005 May 14 | <i>Miniopterus natalensis</i> | Museum voucher | KwaZulu-Natal | -28.885552, 31.361206 | Entumeni |
| UP 0116, DM7908 | 2003 Feb 07 | <i>Nycteris thebaica</i> | Museum voucher | KwaZulu-Natal | -29.851041, 31.021642 | Durban |
| UP 0118, DM8374 | 2005 May 14 | <i>Rhinolophus clivosus</i> | Museum voucher | KwaZulu-Natal | -29.851041, 31.021642 | Durban |
| UP 0119, DM8001 | 2003 Feb 07 | <i>Chaerephon (Mops) pumilus</i> | Museum voucher | KwaZulu-Natal | -29.851041, 31.021642 | Durban |
| UP 0124, DM8000 | 2003 Apr 25 | <i>Neoromicia (Laephotis) nana</i> | Museum voucher | KwaZulu-Natal | -29.668920, 31.118235 | Umdloti |
| UP 0125, DM8380 | 2005 May 15 | <i>Miniopterus natalensis</i> | Museum voucher | KwaZulu-Natal | -28.582087, 31.401064 | Melmoth |
| UP 0126, DM8003 | 2004 Feb 27 | <i>Chaerephon (Mops) pumilus</i> | Museum voucher | KwaZulu-Natal | -30.036554, 30.896156 | Amanzimtoti |
| UP 0127, DM7904 | 2002 Dec 17 | <i>Miniopterus natalensis</i> | Museum voucher | KwaZulu-Natal | -29.870801, 30.506680 | Eston |
| UP 0129, DM8377 | 2005 May 15 | <i>Rhinolophus clivosus</i> | Museum voucher | KwaZulu-Natal | -28.582087, 31.401064 | Melmoth |
| UP 0131, DM8375 | 2005 May 14 | <i>Rhinolophus clivosus</i> | Museum voucher | KwaZulu-Natal | -28.882841, 31.464582 | Eshowe |
| UP 0132, DM8440 | 2006 Jan 25 | <i>Chaerephon (Mops) pumilus</i> | Museum voucher | KwaZulu-Natal | -29.851041, 31.021642 | Durban |
| UP 0134, DM7907 | 2004 Jan 04 | <i>Chaerephon (Mops) pumilus</i> | Museum voucher | KwaZulu-Natal | Not recorded | Not recorded |
| UP 0135, DM8421 | 2005 Sep 01 | <i>Otomops martiensseni</i> | Museum voucher | KwaZulu-Natal | -29.839963, 30.840120 | Pinetown |
| UP 0138, DM8378 | 2005 May 15 | <i>Rhinolophus clivosus</i> | Museum voucher | KwaZulu-Natal | -28.582087, 31.401064 | Melmoth |
| UP 0139, DM8429 | 2005 Aug 01 | <i>Miniopterus natalensis</i> | Museum voucher | KwaZulu-Natal | Not recorded | Not recorded |
| UP 0140, DM8419 | 2006 Jan 25 | <i>Otomops martiensseni</i> | Museum voucher | KwaZulu-Natal | Not recorded | Not recorded |
| UP 0141, DM8420 | 2006 Jan 25 | <i>Otomops martiensseni</i> | Museum voucher | KwaZulu-Natal | -29.851041, 31.021642 | Durban |
| UP 0148 | 2006 Jun 23 | <i>Otomops martiensseni</i> | Morphologic | KwaZulu-Natal | -29.851041, 31.021642 | Durban |
| UP 0149 | 2006 May 29 | <i>Chaerephon (Mops) pumilus</i> | Genetic | KwaZulu-Natal | Not recorded | Not recorded |
| UP 0151 | 2006 Mar 25 | <i>Scotophilus dinganii</i> | Genetic | KwaZulu-Natal | -29.851041, 31.021642 | Durban |
| UP 0152 | 2006 Apr 20 | <i>Tadarida aegyptiaca</i> | Genetic | KwaZulu-Natal | -29.851041, 31.021642 | Durban |
| UP 0153 | 2006 Apr 10 | <i>Chaerephon (Mops) pumilus</i> | Genetic | KwaZulu-Natal | -29.851041, 31.021642 | Durban |
| UP 0154, TM47967 | 2007 Jun 10 | <i>Myotis welwitschii</i> | Museum voucher | Mpumalanga | -25.580473, 30.190405 | Vlakfontein |
| UP 0155, TM47871 | 2006 Jan 11 | <i>Myotis tricolor</i> | Museum voucher | Mpumalanga | -25.369997, 30.699825 | Sudwala kraal |

| Laboratory no.* | Collection date | Bat species† | ID method | Province | Coordinates | Site |
|---------------------|-----------------|--|-------------------------|------------|------------------------|---------------------------|
| UP 0156, TM48048 | 2007 Dec 16 | <i>Tadarida aegyptiaca</i> | Museum voucher | North West | -27.6245, 24.63344 | Taung World Heritage Site |
| UP 0157, TM48049 | 2007 Dec 16 | <i>Tadarida aegyptiaca</i> | Museum voucher | North West | -27.6245, 24.63344 | Taung World Heritage Site |
| UP 0158, TM48050 | 2007 Dec 16 | <i>Tadarida aegyptiaca</i> | Museum voucher | North West | -27.6245, 24.63344 | Taung World Heritage Site |
| UP 0159, TM48047 | 2007 Dec 16 | <i>Tadarida aegyptiaca</i> | Museum voucher | North West | -27.6245, 24.63344 | Taung World Heritage Site |
| UP 0160, TM48034 | 2007 Dec 14 | <i>Rhinolophus denti</i> | Museum voucher | North West | -27.61543, 24.63005 | Taung World Heritage Site |
| UP 0161, TM48032 | 2007 Dec 14 | <i>Neoromicia (Laephotis) capensis</i> | Museum voucher | North West | -27.61543, 24.63005 | Taung World Heritage Site |
| UP 0162, TM48036 | 2007 Dec 14 | <i>Rhinolophus denti</i> | Museum voucher | North West | -27.61543, 24.63005 | Taung World Heritage Site |
| UP 0163, TM48035 | 2007 Dec 14 | <i>Rhinolophus denti</i> | Museum voucher | North West | -27.61543, 24.63005 | Taung World Heritage Site |
| UP 0164, TM48033 | 2007 Dec 14 | <i>Neoromicia (Laephotis) capensis</i> | Museum voucher | North West | -27.61543, 24.63005 | Taung World Heritage Site |
| UP 0165, TM48042 | 2007 Dec 15 | <i>Neoromicia (Laephotis) capensis</i> | Museum voucher | North West | -27.61376, 24.62976 | Taung World Heritage Site |
| UP 0166, TM48046 | 2007 Dec 15 | <i>Neoromicia (Laephotis) capensis</i> | Genetic, Museum voucher | North West | -27.61428, 24.62896 | Taung World Heritage Site |
| UP 0167, TM48043 | 2007 Dec 15 | <i>Neoromicia (Laephotis) capensis</i> | Museum voucher | North West | -27.61428, 24.62896 | Taung World Heritage Site |
| UP 0168, TM48044 | 2007 Dec 15 | <i>Neoromicia (Laephotis) capensis</i> | Museum voucher | North West | -27.61428, 24.62896 | Taung World Heritage Site |
| UP 0169, TM48045 | 2007 Dec 15 | <i>Neoromicia (Laephotis) capensis</i> | Museum voucher | North West | -27.61428, 24.62896 | Taung World Heritage Site |
| UP 0171, TM48037 | 2007 Dec 14 | <i>Rhinolophus denti</i> | Museum voucher | North West | -27.61543, 24.63005 | Taung World Heritage Site |
| UP 0172, TM48041 | 2007 Dec 15 | <i>Rhinolophus denti</i> | Museum voucher | North West | -27.61408, 24.62941 | Taung World Heritage Site |
| UP 0173, TM48038 | 2007 Dec 15 | <i>Eptesicus hottentotus</i> | Museum voucher | North West | -27.61408, 24.62941 | Taung World Heritage Site |
| UP 0174, TM48040 | 2007 Dec 15 | <i>Rhinolophus damarensis</i> | Museum voucher | North West | -27.61408, 24.62941 | Taung World Heritage Site |
| UP 0190, TM48014 | 2007 Dec 01 | <i>Nycteris thebaica</i> | Museum voucher | North West | -24.76622, 26.37098 | Madikwe Game Reserve |
| UP 0192, TM48016 | 2007 Dec 01 | <i>Rhinolophus simulator</i> | Museum voucher | North West | -24.76622, 26.37098 | Madikwe Game Reserve |
| UP 0193, TM48017 | 2007 Dec 01 | <i>Rhinolophus simulator</i> | Museum voucher | North West | -24.76622, 26.37098 | Madikwe Game Reserve |
| UP 0194, TM48018 | 2007 Dec 01 | <i>Rhinolophus damarensis</i> | Museum voucher | North West | -24.76622, 26.37098 | Madikwe Game Reserve |
| UP 0195, TM48019 | 2007 Dec 01 | <i>Rhinolophus damarensis</i> | Museum voucher | North West | -24.76622, 26.37098 | Madikwe Game Reserve |
| UP 0196, TM48020 | 2007 Dec 01 | <i>Rhinolophus damarensis</i> | Museum voucher | North West | -24.76622, 26.37098 | Madikwe Game Reserve |
| UP 0197, TM48021 | 2007 Dec 01 | <i>Rhinolophus damarensis</i> | Museum voucher | North West | -24.76622, 26.37098 | Madikwe Game Reserve |
| UP 0198, TM48022 | 2007 Dec 01 | <i>Miniopterus natalensis</i> | Museum voucher | North West | -24.76622, 26.37098 | Madikwe Game Reserve |
| UP 0199, TM48023 | 2007 Dec 01 | <i>Miniopterus natalensis</i> | Museum voucher | North West | -24.76622, 26.37098 | Madikwe Game Reserve |
| UP 0200, TM48024 | 2007 Dec 01 | <i>Miniopterus natalensis</i> | Museum voucher | North West | -24.76622, 26.37098 | Madikwe Game Reserve |
| UP 0201, TM48025 | 2007 Dec 01 | <i>Miniopterus natalensis</i> | Museum voucher | North West | -24.76622, 26.37098 | Madikwe Game Reserve |
| UP 0202, TM48026 | 2007 Dec 01 | <i>Miniopterus natalensis</i> | Museum voucher | North West | -24.76622, 26.37098 | Madikwe Game Reserve |

| Laboratory no.* | Collection date | Bat species† | ID method | Province | Coordinates | Site |
|---------------------|-----------------|---|----------------------------|---------------|--------------------------|----------------------|
| UP 0203, TM48027 | 2007 Dec 01 | <i>Scotophilus dinganii</i> | Museum voucher | North West | -24.76622, 26.32628 | Madikwe Game Reserve |
| UP 0204, TM48028 | 2007 Dec 01 | <i>Neoromicia (Laephotis) capensis</i> | Museum voucher | North West | -24.79699, 26.30092 | Madikwe Game Reserve |
| UP 0205, TM48029 | 2007 Dec 01 | <i>Sauromys petrophilus</i> | Museum voucher | North West | -24.79699, 26.30092 | Madikwe Game Reserve |
| UP 0206, TM48030 | 2007 Dec 01 | <i>Neoromicia (Laephotis) capensis</i> | Museum voucher | North West | -24.79699, 26.30092 | Madikwe Game Reserve |
| UP 0207, TM48031 | 2007 Dec 01 | <i>Neoromicia (Laephotis) capensis</i> | Museum voucher | North West | -24.79699, 26.30092 | Madikwe Game Reserve |
| UP 0288 | 2007 Nov 07 | <i>Miniopterus fraterculus</i> | Genetic | North West | -26.861075, 27.287641 | Thabela thabeng |
| UP 0291 | 2007 Nov 07 | <i>Miniopterus fraterculus</i> | Genetic | North West | -26.861075, 27.287641 | Thabela thabeng |
| UP 0310 | 2008 Feb 24 | <i>Neoromicia (Laephotis) capensis</i> | Genetic | Mpumalanga | -25.091742, 30.563794 | Paardeplaats |
| UP 0314 | 2008 Jun 10 | <i>Chaerephon (Mops) pumilus</i> | Morphologic | KwaZulu-Natal | -30.203816, 30.780837 | Umkomaas |
| UP 0473 | 2007 May 10 | <i>Mops condylurus</i> | Morphologic | Gauteng | -26.397163, 28.463172 | Nigel |
| UP 0639 | 2010 Sep 03 | <i>Neoromicia (Laephotis) capensis</i> | Genetic | Gauteng | -25.823356, 28.084432 | Hennopsrivier |
| UP 0713; TM48494 | 2010 Feb 01 | <i>Glauconycteris (variegata)</i> | Genetic, Museum voucher | Limpopo | -22.42151, 31.2238 | Kruger National Park |
| UP 0716; TM48497 | 2010 Feb 01 | <i>Scotophilus dinganii</i> | Museum voucher | Limpopo | -22.42151, 31.2238 | Kruger National Park |
| UP 0717; TM48498 | 2010 Feb 01 | <i>Nycticeinops schlieffeni</i> | Museum voucher | Limpopo | -22.42151, 31.2238 | Kruger National Park |
| UP 0719; TM48500 | 2010 Feb 01 | <i>Nycticeinops schlieffeni</i> | Museum voucher | Limpopo | -22.42151, 31.2238 | Kruger National Park |
| UP 0720; TM48501 | 2010 Feb 01 | <i>Nycticeinops schlieffeni</i> | Museum voucher | Limpopo | -22.42151, 31.2238 | Kruger National Park |
| UP 0721; TM48502 | 2010 Feb 01 | <i>Nycticeinops schlieffeni</i> | Museum voucher | Limpopo | -22.42151, 31.2238 | Kruger National Park |
| UP 0722; TM48503 | 2010 Feb 01 | <i>Scotophilus dinganii</i> | Museum voucher | Limpopo | -22.42151, 31.2238 | Kruger National Park |
| UP 0723; TM48504 | 2010 Feb 01 | <i>Scotophilus dinganii</i> | Museum voucher | Limpopo | -22.42151, 31.2238 | Kruger National Park |
| UP 0724; TM48505 | 2010 Feb 01 | <i>Neoromicia (Laephotis) nana</i> | Museum voucher | Limpopo | -22.42151, 31.2238 | Kruger National Park |
| UP 0725; TM48506 | 2010 Feb 01 | <i>Neoromicia (Laephotis) zuluensis</i> | Museum voucher | Limpopo | -22.42151, 31.2238 | Kruger National Park |
| UP 0726; TM48507 | 2010 Feb 01 | <i>Myotis tricolor</i> | Museum voucher | Limpopo | -22.42151, 31.2238 | Kruger National Park |
| UP 0728; TM48509 | 2010 Feb 01 | <i>Neoromicia (Laephotis) nana</i> | Museum voucher | Limpopo | -22.42151, 31.2238 | Kruger National Park |
| UP 0733; TM48512 | 2010 Feb 02 | <i>Mops condylurus</i> | Museum voucher | Limpopo | -22.42601, 31.2987 | Kruger National Park |
| UP 0734; TM48513 | 2010 Feb 02 | <i>Mops condylurus</i> | Museum voucher | Limpopo | -22.42601, 31.2987 | Kruger National Park |
| UP 0739; TM48518 | 2010 Feb 02 | <i>Scotophilus dinganii</i> | Museum voucher | Limpopo | -22.42601, 31.2987 | Kruger National Park |
| UP 0741; TM48502 | 2010 Feb 02 | <i>Scotophilus dinganii</i> | Museum voucher | Limpopo | -22.42601, 31.2987 | Kruger National Park |
| UP 0745; TM48523 | 2010 Feb 02 | <i>Pipistrellus rusticus</i> | Museum voucher | Limpopo | -22.42601, 31.2987 | Kruger National Park |
| UP 0746; TM48524 | 2010 Feb 02 | <i>Pipistrellus rusticus</i> | Museum voucher | Limpopo | -22.42601, 31.2987 | Kruger National Park |
| UP 0747; TM48525 | 2010 Feb 02 | <i>Pipistrellus rusticus</i> | Museum voucher | Limpopo | -22.42601, 31.2987 | Kruger National Park |

| Laboratory no.* | Collection date | Bat species† | ID method | Province | Coordinates | Site |
|---------------------|-----------------|--|-------------------------|---------------|--------------------------|----------------------|
| UP 0748; TM48526 | 2010 Feb 02 | <i>Pipistrellus rusticus</i> | Museum voucher | Limpopo | -22.42601, 31.2987 | Kruger National Park |
| UP 0749; TM48527 | 2010 Feb 02 | <i>Pipistrellus rusticus</i> | Museum voucher | Limpopo | -22.42601, 31.2987 | Kruger National Park |
| UP 0755; TM48528 | 2010 Feb 03 | <i>Taphozous mauritanus</i> | Museum voucher | Limpopo | -22.34657, 31.11595 | Kruger National Park |
| UP 0758; TM48531 | 2010 Feb 03 | <i>Chaerephon (Mops) pumilus</i> | Museum voucher | Limpopo | -22.34657, 31.11595 | Kruger National Park |
| UP 0759; TM48532 | 2010 Feb 03 | <i>Chaerephon (Mops) pumilus</i> | Museum voucher | Limpopo | -22.34657, 31.11595 | Kruger National Park |
| UP 0761; TM48534 | 2010 Feb 03 | <i>Neoromicia (Laephotis) nana</i> | Museum voucher | Limpopo | -22.34657, 31.11595 | Kruger National Park |
| UP 0762; TM48535 | 2010 Feb 03 | <i>Neoromicia (Laephotis) cf. helios</i> | Museum voucher | Limpopo | -22.34657, 31.11595 | Kruger National Park |
| UP 0763; TM48536 | 2010 Feb 03 | <i>Neoromicia (Laephotis) cf. helios</i> | Museum voucher | Limpopo | -22.34657, 31.11595 | Kruger National Park |
| UP 0764; TM48537 | 2010 Feb 03 | <i>Neoromicia (Laephotis) cf. helios</i> | Museum voucher | Limpopo | -22.34657, 31.11595 | Kruger National Park |
| UP 0766; TM48539 | 2010 Feb 03 | <i>Scotophilus dinganii</i> | Genetic, Museum voucher | Limpopo | -22.34657, 31.11595 | Kruger National Park |
| UP 0767; TM48540 | 2010 Feb 03 | <i>Scotophilus dinganii</i> | Museum voucher | Limpopo | -22.34657, 31.11595 | Kruger National Park |
| UP 0768; TM48541 | 2010 Feb 03 | <i>Mops condylurus</i> | Museum voucher | Limpopo | -22.34657, 31.11595 | Kruger National Park |
| UP 0769; TM48542 | 2010 Feb 03 | <i>Taphozous mauritanus</i> | Museum voucher | Limpopo | -22.34657, 31.11595 | Kruger National Park |
| UP 0770; TM48543 | 2010 Feb 03 | <i>Mops condylurus</i> | Museum voucher | Limpopo | -22.34657, 31.11595 | Kruger National Park |
| UP 0771; TM48544 | 2010 Feb 03 | <i>Mops condylurus</i> | Museum voucher | Limpopo | -22.34657, 31.11595 | Kruger National Park |
| UP 0772; TM48545 | 2010 Feb 03 | <i>Chaerephon (Mops) ansorgei</i> | Museum voucher | Limpopo | -22.34657, 31.11595 | Kruger National Park |
| UP 0774; TM48547 | 2010 Feb 03 | <i>Nycticeinops schlieffeni</i> | Museum voucher | Limpopo | -22.34657, 31.11595 | Kruger National Park |
| UP 0775; TM48548 | 2010 Feb 03 | <i>Nycticeinops schlieffeni</i> | Museum voucher | Limpopo | -22.34657, 31.11595 | Kruger National Park |
| UP 0779; TM48552 | 2010 Feb 03 | <i>Scotophilus viridis</i> | Museum voucher | Limpopo | -22.34657, 31.11595 | Kruger National Park |
| UP 0780; TM48553 | 2010 Feb 03 | <i>Scotophilus leucogaster</i> | Genetic, Museum voucher | Limpopo | -22.34657, 31.11595 | Kruger National Park |
| UP 0781; TM48554 | 2010 Feb 03 | <i>Scotophilus viridis</i> | Museum voucher | Limpopo | -22.34657, 31.11595 | Kruger National Park |
| UP 0782; TM48555 | 2010 Feb 03 | <i>Scotophilus viridis</i> | Museum voucher | Limpopo | -22.34657, 31.11595 | Kruger National Park |
| UP 0783; TM48556 | 2010 Feb 03 | <i>Scotophilus viridis</i> | Museum voucher | Limpopo | -22.34657, 31.11595 | Kruger National Park |
| UP 0784; TM48557 | 2010 Feb 03 | <i>Scotophilus viridis</i> | Museum voucher | Limpopo | -22.34657, 31.11595 | Kruger National Park |
| UP 0785; TM48558 | 2010 Feb 03 | <i>Scotophilus leucogaster</i> | Museum voucher | Limpopo | -22.34657, 31.11595 | Kruger National Park |
| UP 0786; TM48559 | 2010 Feb 03 | <i>Scotophilus leucogaster</i> | Museum voucher | Limpopo | -22.34657, 31.11595 | Kruger National Park |
| UP 0787; TM48560 | 2010 Feb 03 | <i>Scotophilus leucogaster</i> | Museum voucher | Limpopo | -22.34657, 31.11595 | Kruger National Park |
| UP 0827; TM48611 | 2010 Apr 12 | <i>Glauconycteris variegata</i> | Museum voucher | KwaZulu-Natal | -27.262925, 32.768556 | Rocktail Beach Camp |
| UP 0828; TM48612 | 2010 Apr 14 | <i>Nycteris thebaica</i> | Museum voucher | KwaZulu-Natal | -27.221520, 32.793200 | Rocktail Beach Camp |
| UP 0829; TM48613 | 2010 Apr 14 | <i>Nycteris thebaica</i> | Museum voucher | KwaZulu-Natal | -27.221520, 32.793200 | Rocktail Beach Camp |
| UP 0830; TM48614 | 2010 Apr 13 | <i>Scotophilus dinganii</i> | Museum voucher | KwaZulu-Natal | -27.221520, 32.793200 | Rocktail Beach Camp |

| Laboratory no.* | Collection date | Bat species† | ID method | Province | Coordinates | Site |
|---------------------|-----------------|---|----------------|---------------|--------------------------|-----------------------|
| UP 0831; TM48615 | 2010 Apr 13 | <i>Scotophilus dinganii</i> | Museum voucher | KwaZulu-Natal | -27.221520, 32.793200 | Rocktail Beach Camp |
| UP 0833; TM48617 | 2010 Apr 13 | <i>Scotophilus dinganii</i> | Museum voucher | KwaZulu-Natal | -27.221520, 32.793200 | Rocktail Beach Camp |
| UP 0834; TM48618 | 2010 Apr 13 | <i>Scotophilus dinganii</i> | Museum voucher | KwaZulu-Natal | -27.221520, 32.793200 | Rocktail Beach Camp |
| UP 0835; TM48619 | 2010 Apr 13 | <i>Chaerephon (Mops) pumilus</i> | Museum voucher | KwaZulu-Natal | -27.221520, 32.793200 | Rocktail Beach Camp |
| UP 0836; TM48620 | 2010 Apr 13 | <i>Chaerephon (Mops) pumilus</i> | Museum voucher | KwaZulu-Natal | -27.221520, 32.793200 | Rocktail Beach Camp |
| UP 0837; TM48621 | 2010 Apr 13 | <i>Chaerephon (Mops) pumilus</i> | Museum voucher | KwaZulu-Natal | -27.221520, 32.793200 | Rocktail Beach Camp |
| UP 0838; TM48622 | 2010 Apr 13 | <i>Chaerephon (Mops) pumilus</i> | Museum voucher | KwaZulu-Natal | -27.221520, 32.793200 | Rocktail Beach Camp |
| UP 0839; TM48623 | 2010 Apr 14 | <i>Pipistrellus (Mops) pumilus</i> | Museum voucher | KwaZulu-Natal | -27.221520, 32.793200 | Rocktail Beach Camp |
| UP 0840; TM48624 | 2010 Apr 13 | <i>Pipistrellus hesperidus</i> | Museum voucher | KwaZulu-Natal | -27.221520, 32.793200 | Rocktail Beach Camp |
| UP 0842; TM48626 | 2010 Apr 13 | <i>Pipistrellus hesperidus</i> | Museum voucher | KwaZulu-Natal | -27.221520, 32.793200 | Rocktail Beach Camp |
| UP 0843; TM48627 | 2010 Apr 14 | <i>Nycteris thebaica</i> | Museum voucher | KwaZulu-Natal | -27.221520, 32.793200 | Rocktail Beach Camp |
| UP 0844; TM48628 | 2010 Apr 14 | <i>Kerivoula (Glauconycteris) argentata</i> | Museum voucher | KwaZulu-Natal | -27.221520, 32.793200 | Rocktail Beach Camp |
| UP 0845; TM48629 | 2010 Apr 14 | <i>Scotophilus dinganii</i> | Museum voucher | KwaZulu-Natal | -27.262925, 32.76855 | Rocktail Beach Camp |
| UP 0846; TM48630 | 2010 Apr 14 | <i>Glauconycteris variegata</i> | Museum voucher | KwaZulu-Natal | -27.262925, 32.76855 | Rocktail Beach Camp |
| UP 0847; TM48631 | 2010 Apr 14 | <i>Scotophilus dinganii</i> | Museum voucher | KwaZulu-Natal | -27.262925, 32.76855 | Rocktail Beach Camp |
| UP 0848; TM48632 | 2010 Apr 14 | <i>Scotophilus dinganii</i> | Museum voucher | KwaZulu-Natal | -27.262925, 32.76855 | Rocktail Beach Camp |
| UP 0854; TM48635 | 2010 Apr 15 | <i>Nycteris thebaica</i> | Museum voucher | KwaZulu-Natal | -27.22152, 32.7932 | Rocktail Beach Camp |
| UP 0855; TM48636 | 2010 Apr 15 | <i>Nycteris thebaica</i> | Museum voucher | KwaZulu-Natal | -27.22152, 32.7932 | Rocktail Beach Camp |
| UP 0856; TM48637 | 2010 Apr 15 | <i>Nycteris thebaica</i> | Museum voucher | KwaZulu-Natal | -27.22152, 32.7932 | Rocktail Beach Camp |
| UP 0865; TM48638 | 2010 Apr 15 | <i>Scotophilus dinganii</i> | Museum voucher | KwaZulu-Natal | -27.262925, 32.768550 | Rocktail Beach Camp |
| UP 0866; TM48639 | 2010 Apr 15 | <i>Scotophilus dinganii</i> | Museum voucher | KwaZulu-Natal | -27.262925, 32.768550 | Rocktail Beach Camp |
| UP 0867; TM48640 | 2010 Apr 15 | <i>Scotophilus dinganii</i> | Museum voucher | KwaZulu-Natal | -27.262925, 32.768550 | Rocktail Beach Camp |
| UP 0868; TM48641 | 2010 Apr 15 | <i>Glauconycteris variegata</i> | Museum voucher | KwaZulu-Natal | -27.262925, 32.768550 | Rocktail Beach Camp |
| UP 0869; TM48642 | 2010 Apr 15 | <i>Pipistrellus hesperidus</i> | Museum voucher | KwaZulu-Natal | -27.262925, 32.768550 | Rocktail Beach Camp |
| UP 0870; TM48643 | 2010 Apr 15 | <i>Pipistrellus hesperidus</i> | Museum voucher | KwaZulu-Natal | -27.262925, 32.768550 | Rocktail Beach Camp |
| UP 0871; TM48644 | 2010 Apr 15 | <i>Pipistrellus hesperidus</i> | Museum voucher | KwaZulu-Natal | -27.262925, 32.768550 | Rocktail Beach Camp |
| UP 0904 | 2009 Jul 18 | <i>Miniopterus fraterculus</i> | Genetic | Gauteng | -25.897071, 28.221455 | Grootboom Cave, Irene |
| UP 0912; TM48567 | 2010 Aug 11 | <i>Hipposideros caffer</i> | Museum voucher | Limpopo | -22.42151, 31.2238 | Kruger National Park |
| UP 0913; TM48568 | 2010 Aug 11 | <i>Nycticeinops schlieffeni</i> | Museum voucher | Limpopo | -22.42151, 31.2238 | Kruger National Park |
| UP 0914; TM48569 | 2010 Aug 11 | <i>Nycticeinops schlieffeni</i> | Museum voucher | Limpopo | -22.42151, 31.2238 | Kruger National Park |
| UP 0915; TM48570 | 2010 Aug 11 | <i>Neoromicia (Laephotis) capensis</i> | Museum voucher | Limpopo | -22.42151, 31.2238 | Kruger National Park |
| UP 0920; TM48571 | 2010 Sep 11 | <i>Neoromicia (Laephotis) hana</i> | Museum voucher | Limpopo | -22.42151, 31.2238 | Kruger National Park |

| Laboratory no.* | Collection date | Bat species† | ID method | Province | Coordinates | Site |
|---|-----------------|--|-------------------|------------|------------------------|-------------------------|
| UP 0921; voucher in Kruger National Park collection | 2010 Sep 11 | <i>Neoromicia (Laephotis) cf. helios</i> | Morphologic | Limpopo | -22.42151, 31.2238 | Kruger National Park |
| UP 0922; TM48572 | 2010 Sep 11 | <i>Neoromicia (Laephotis) nana</i> | Museum voucher | Limpopo | -22.42151, 31.2238 | Kruger National Park |
| UP 0923; TM48573 | 2010 Sep 11 | <i>Neoromicia (Laephotis) nana</i> | Museum voucher | Limpopo | -22.42151, 31.2238 | Kruger National Park |
| UP 0929; TM48576 | 2010 Oct 11 | <i>Scotophilus dinganii</i> | Museum voucher | Limpopo | -22.42601, 31.29873 | Kruger National Park |
| UP 0930; TM48577 | 2010 Oct 11 | <i>Scotophilus dinganii</i> | Museum voucher | Limpopo | -22.42601, 31.29873 | Kruger National Park |
| UP 0931; TM48578 | 2010 Oct 11 | <i>Neoromicia (Laephotis) helios</i> | Museum voucher | Limpopo | -22.42601, 31.29873 | Kruger National Park |
| UP 0932; TM48579 | 2010 Oct 11 | <i>Pipistrellus rusticus</i> | Museum voucher | Limpopo | -22.42601, 31.29873 | Kruger National Park |
| UP 0934; TM48581 | 2010 Oct 11 | <i>Chaerephon (Mops) pumilus</i> | Museum voucher | Limpopo | -22.42601, 31.29873 | Kruger National Park |
| UP 0947; TM48582 | 2010 Nov 11 | <i>Rhinolophus landeri</i> | Museum voucher | Limpopo | -22.42601, 31.29873 | Kruger National Park |
| UP 0948; TM48583 | 2010 Nov 11 | <i>Hipposideros caffer</i> | Museum voucher | Limpopo | -22.42151, 31.2238 | Kruger National Park |
| UP 0949; TM48584 | 2010 Dec 11 | <i>Hipposideros caffer</i> | Museum voucher | Limpopo | -22.34657, 31.11595 | Kruger National Park |
| UP 0951; TM48586 | 2010 Dec 11 | <i>Hipposideros caffer</i> | Museum voucher | Limpopo | -22.42151, 31.2238 | Kruger National Park |
| UP 0952; TM48587 | 2010 Dec 11 | <i>Neoromicia (Laephotis) helios</i> | Museum voucher | Limpopo | -22.34657, 31.11595 | Kruger National Park |
| UP 0953; TM48588 | 2010 Dec 11 | <i>Taphozous mauritanus</i> | Museum voucher | Limpopo | -22.34657, 31.11595 | Kruger National Park |
| UP 0954; TM48589 | 2010 Dec 11 | <i>Scotophilus viridis</i> | Museum voucher | Limpopo | -22.34657, 31.11595 | Kruger National Park |
| UP 0955; TM48590 | 2010 Dec 11 | <i>Scotophilus dinganii</i> | Museum voucher | Limpopo | -22.34657, 31.11595 | Kruger National Park |
| UP 0956; TM48591 | 2010 Dec 11 | <i>Scotophilus dinganii</i> | Museum voucher | Limpopo | -22.34657, 31.11595 | Kruger National Park |
| UP 0957; TM48592 | 2010 Dec 11 | <i>Scotophilus viridis</i> | Museum voucher | Limpopo | -22.34657, 31.11595 | Kruger National Park |
| UP 0958; TM48593 | 2010 Dec 11 | <i>Scotophilus dinganii</i> | Museum voucher | Limpopo | -22.34657, 31.11595 | Kruger National Park |
| UP 0959; TM48594 | 2010 Dec 11 | <i>Scotophilus dinganii</i> | Museum voucher | Limpopo | -22.34657, 31.11595 | Kruger National Park |
| UP 0960; TM48595 | 2010 Dec 11 | <i>Scotophilus leucogaster</i> | Museum voucher | Limpopo | -22.34657, 31.11595 | Kruger National Park |
| UP 0961; TM48596 | 2010 Dec 11 | <i>Neoromicia (Laephotis) zuluensis</i> | Museum voucher | Limpopo | -22.34657, 31.11595 | Kruger National Park |
| UP 0962; TM48597 | 2010 Dec 11 | <i>Neoromicia (Laephotis) nana</i> | Museum voucher | Limpopo | -22.34657, 31.11595 | Kruger National Park |
| UP 0963; TM48598 | 2010 Dec 11 | <i>Neoromicia (Laephotis) capensis</i> | Museum voucher | Limpopo | -22.34657, 31.11595 | Kruger National Park |
| UP 0964; TM48599 | 2010 Dec 11 | <i>Neoromicia (Laephotis) rendalli</i> | Museum voucher | Limpopo | -22.34657, 31.11595 | Kruger National Park |
| UP 0965; TM48600 | 2010 Dec 11 | <i>Chaerephon (Mops)ansorgei</i> | Museum voucher | Limpopo | -22.34657, 31.11595 | Kruger National Park |
| UP 0966; TM48601 | 2010 Dec 11 | <i>Mops condylurus</i> | Museum voucher | Limpopo | -22.34657, 31.11595 | Kruger National Park |
| UP 0967; TM48602 | 2010 Dec 11 | <i>Mops condylurus</i> | Museum voucher | Limpopo | -22.34657, 31.11595 | Kruger National Park |
| UP 0968; TM48603 | 2010 Dec 11 | <i>Mops condylurus</i> | Museum voucher | Limpopo | -22.34657, 31.11595 | Kruger National Park |
| UP 1007; TM48653 | 2010 Dec 10 | <i>Tadarida aegyptiaca</i> | Museum voucher | North West | -25.73903, 27.23011 | Kgaswane Nature Reserve |
| UP 1008; TM48646 | 2010 Dec 10 | <i>Scotophilus dinganii</i> | Museum voucher | North West | -25.73903, 27.23011 | Kgaswane Nature Reserve |

| Laboratory no.* | Collection date | Bat species† | ID method | Province | Coordinates | Site |
|---------------------|-----------------|--|----------------------------|------------|--------------------------|---------------------------------------|
| UP 1009; TM48651 | 2010 Dec 10 | <i>Scotophilus dinganii</i> | Museum voucher | North West | -25.73903, 27.23011 | Kgaswane Nature Reserve |
| UP 1010; TM48650 | 2010 Dec 10 | <i>Scotophilus dinganii</i> | Museum voucher | North West | -25.73903, 27.23011 | Kgaswane Nature Reserve |
| UP 1011; TM48658 | 2010 Dec 10 | <i>Pipistrellus rusticus</i> | Museum voucher | North West | -25.73903, 27.23011 | Kgaswane Nature Reserve |
| UP 1012; TM48660 | 2010 Dec 10 | <i>Neoromicia (Laephotis) capensis</i> | Museum voucher | North West | -25.73903, 27.23011 | Kgaswane Nature Reserve |
| UP 1013; TM48656 | 2010 Dec 10 | <i>Scotophilus dinganii</i> | Museum voucher | North West | -25.73903, 27.23011 | Kgaswane Nature Reserve |
| UP 1014; TM48654 | 2010 Dec 10 | <i>Scotophilus dinganii</i> | Museum voucher | North West | -25.73903, 27.23011 | Kgaswane Nature Reserve |
| UP 1015; TM48648 | 2010 Dec 10 | <i>Scotophilus dinganii</i> | Museum voucher | North West | -25.73903, 27.23011 | Kgaswane Nature Reserve |
| UP 1016; TM48645 | 2010 Dec 10 | <i>Scotophilus dinganii</i> | Museum voucher | North West | -25.73903, 27.23011 | Kgaswane Nature Reserve |
| UP 1017; TM48649 | 2010 Dec 10 | <i>Scotophilus dinganii</i> | Museum voucher | North West | -25.73903, 27.23011 | Kgaswane Nature Reserve |
| UP 1018; TM48659 | 2010 Dec 10 | <i>Scotophilus dinganii</i> | Genetic, Museum voucher | North West | -25.73903, 27.23011 | Kgaswane Nature Reserve |
| UP 1019; TM48652 | 2010 Dec 10 | <i>Scotophilus dinganii</i> | Museum voucher | North West | -25.73903, 27.23011 | Kgaswane Nature Reserve |
| UP 1020; TM48657 | 2010 Dec 10 | <i>Scotophilus dinganii</i> | Museum voucher | North West | -25.73903, 27.23011 | Kgaswane Nature Reserve |
| UP 1022; TM48647 | 2010 Dec 10 | <i>Pipistrellus rusticus</i> | Genetic, Museum voucher | North West | -25.73903, 27.23011 | Kgaswane Nature Reserve |
| UP 1052; TM48664 | 2010 Dec 11 | <i>Pipistrellus rusticus</i> | Museum voucher | North West | -25.7202, 27.18533 | Kgaswane Nature Reserve |
| UP 1054 | 2010 Dec 03 | <i>Neoromicia (Laephotis) capensis</i> | Genetic | Gauteng | -25.736022, 28.190374 | Pretoria Zoo |
| UP 1055 | 2010 Dec 01 | <i>Neoromicia (Laephotis) capensis</i> | Genetic | Gauteng | -25.736022, 28.190374 | Pretoria Zoo |
| UP 1056 | 2010 Dec 01 | <i>Tadarida aegyptiaca</i> | Genetic | Gauteng | -25.736022, 28.190374 | Pretoria Zoo |
| UP 1363 | 2011 Sep 13 | <i>Scotophilus dinganii</i> | Morphologic | Limpopo | -23.03262, 29.92965 | 71 Kameel Street, Louis Trichardt |
| UP 1364 | 2011 Sep 13 | <i>Mops midas</i> | Morphologic | Limpopo | -23.03262, 29.92965 | 71 Kameel Street, Louis Trichardt |
| UP 1366 | 2011 Sep 14 | <i>Rhinolophus simulator</i> | Morphologic | Limpopo | Not recorded | Labuschagne Farm, Louis Trichardt |
| UP 1367 | 2011 Sep 14 | <i>Rhinolophus clivosus</i> | Morphologic | Limpopo | Not recorded | Labuschagne Farm, Louis Trichardt |
| UP 1368 | 2011 Sep 14 | <i>Rhinolophus hildebrandtii s.l.</i> | Morphologic | Limpopo | Not recorded | Labuschagne Farm, Louis Trichardt |
| UP 1369 | 2011 Sep 24 | <i>Neoromicia (Laephotis) capensis</i> | Genetic | Gauteng | -26.0147, 28.0222 | FreeMe Wildlife Rehabilitation Centre |
| UP 1370 | 2010 Mar 13 | <i>Miniopterus natalensis</i> | Morphologic | Gauteng | -25.897071, 28.221455 | Grootboom Cave, Irene |
| UP 1371 | 2010 Mar 13 | <i>Miniopterus natalensis</i> | Morphologic | Gauteng | -25.897071, 28.221455 | Grootboom Cave, Irene |
| UP 1372 | 2010 Mar 13 | <i>Miniopterus natalensis</i> | Morphologic | Gauteng | -25.897071, 28.221455 | Grootboom Cave, Irene |
| UP 1373 | 2010 Oct 01 | <i>Miniopterus natalensis</i> | Genetic | Gauteng | -25.897071, 28.221455 | Grootboom Cave, Irene |
| UP 1374 | 2011 Apr 01 | <i>Miniopterus natalensis</i> | Morphologic | Gauteng | -25.897071, 28.221455 | Grootboom Cave, Irene |
| UP 1376 | 2011 Apr 01 | <i>Miniopterus natalensis</i> | Morphologic | Gauteng | -25.897071, 28.221455 | Grootboom Cave, Irene |
| UP 1378 | 2011 Apr 01 | <i>Miniopterus natalensis</i> | Morphologic | Gauteng | -25.897071, 28.221455 | Grootboom Cave, Irene |
| UP 1382 | 2011 May 06 | <i>Miniopterus natalensis</i> | Morphologic | Gauteng | -25.897071, 28.221455 | Grootboom Cave, Irene |

| Laboratory no.* | Collection date | Bat species† | ID method | Province | Coordinates | Site |
|-----------------|-----------------|--|-------------|----------|-----------------------|-----------------------|
| UP 1383 | 2011 May 06 | <i>Miniopterus natalensis</i> | Morphologic | Gauteng | -25.897071, 28.221455 | Grootboom Cave, Irene |
| UP 1384 | 2011 May 06 | <i>Miniopterus natalensis</i> | Morphologic | Gauteng | -25.897071, 28.221455 | Grootboom Cave, Irene |
| UP 1385 | 2011 May 06 | <i>Miniopterus natalensis</i> | Morphologic | Gauteng | -25.897071, 28.221455 | Grootboom Cave, Irene |
| UP 1386 | 2011 May 06 | <i>Miniopterus natalensis</i> | Morphologic | Gauteng | -25.897071, 28.221455 | Grootboom Cave, Irene |
| UP 1387 | 2011 May 06 | <i>Miniopterus natalensis</i> | Morphologic | Gauteng | -25.897071, 28.221455 | Grootboom Cave, Irene |
| UP 1389 | 2011 Jun 03 | <i>Miniopterus natalensis</i> | Morphologic | Gauteng | -25.897071, 28.221455 | Grootboom Cave, Irene |
| UP 1390 | 2011 Jun 03 | <i>Miniopterus natalensis</i> | Morphologic | Gauteng | -25.897071, 28.221455 | Grootboom Cave, Irene |
| UP 1391 | 2011 Jun 03 | <i>Miniopterus natalensis</i> | Morphologic | Gauteng | -25.897071, 28.221455 | Grootboom Cave, Irene |
| UP 1392 | 2011 Jun 03 | <i>Miniopterus natalensis</i> | Morphologic | Gauteng | -25.897071, 28.221455 | Grootboom Cave, Irene |
| UP 1395 | 2011 Jun 29 | <i>Miniopterus natalensis</i> | Morphologic | Gauteng | -25.897071, 28.221455 | Grootboom Cave, Irene |
| UP 1396 | 2011 Jun 29 | <i>Miniopterus natalensis</i> | Morphologic | Gauteng | -25.897071, 28.221455 | Grootboom Cave, Irene |
| UP 1397 | 2011 Jun 29 | <i>Miniopterus natalensis</i> | Morphologic | Gauteng | -25.897071, 28.221455 | Grootboom Cave, Irene |
| UP 1398 | 2011 Jun 29 | <i>Miniopterus natalensis</i> | Morphologic | Gauteng | -25.897071, 28.221455 | Grootboom Cave, Irene |
| UP 1399 | 2011 Jun 29 | <i>Miniopterus natalensis</i> | Morphologic | Gauteng | -25.897071, 28.221455 | Grootboom Cave, Irene |
| UP 1421 | 2011 Nov 27 | <i>Neoromicia (Laephotis) capensis</i> | Genetic | Gauteng | Not recorded | Not recorded |
| UP 1422 | 2011 Dec 05 | <i>Neoromicia (Laephotis) capensis</i> | Genetic | Gauteng | Not recorded | Not recorded |
| UP 1423 | 2011 Dec 17 | <i>Pipistrellus rusticus</i> | Morphologic | Gauteng | Not recorded | Not recorded |
| UP 1424 | 2011 Jul 25 | <i>Neoromicia (Laephotis) capensis</i> | Genetic | Gauteng | Not recorded | Not recorded |
| UP 1425 | 2011 Jul 25 | <i>Neoromicia (Laephotis) capensis</i> | Genetic | Gauteng | Not recorded | Not recorded |
| UP 1426 | 2011 Jul 25 | <i>Scotophilus dinganii</i> | Genetic | Gauteng | Not recorded | Not recorded |
| UP 1427 | 2011 Jul 25 | <i>Scotophilus dinganii</i> | Genetic | Gauteng | Not recorded | Not recorded |
| UP 1428 | 2012 Apr 21 | <i>Neoromicia (Laephotis) capensis</i> | Genetic | Gauteng | -25.736022, 28.190374 | Pretoria Zoo |
| UP 1485 | 2012 Jun 12 | <i>Hipposideros caffer</i> | Morphologic | Limpopo | -24.11487, 30.12151 | Matlapitsi Cave |
| UP 1486 | 2012 Jun 12 | <i>Hipposideros caffer</i> | Morphologic | Limpopo | -24.11487, 30.12151 | Matlapitsi Cave |
| UP 1487 | 2012 Jun 12 | <i>Miniopterus natalensis</i> | Morphologic | Limpopo | -24.11487, 30.12151 | Matlapitsi Cave |
| UP 1488 | 2012 Jun 12 | <i>Miniopterus natalensis</i> | Morphologic | Limpopo | -24.11487, 30.12151 | Matlapitsi Cave |
| UP 1489 | 2012 Jun 12 | <i>Hipposideros caffer</i> | Morphologic | Limpopo | -24.11487, 30.12151 | Matlapitsi Cave |
| UP 1490 | 2012 Jun 12 | <i>Miniopterus natalensis</i> | Morphologic | Limpopo | -24.11487, 30.12151 | Matlapitsi Cave |
| UP 1491 | 2012 Jun 12 | <i>Miniopterus natalensis</i> | Morphologic | Limpopo | -24.11487, 30.12151 | Matlapitsi Cave |
| UP 1492 | 2012 Jun 12 | <i>Miniopterus natalensis</i> | Morphologic | Limpopo | -24.11487, 30.12151 | Matlapitsi Cave |
| UP 1493 | 2012 Jun 12 | <i>Hipposideros caffer</i> | Morphologic | Limpopo | -24.11487, 30.12151 | Matlapitsi Cave |

| Laboratory no.* | Collection date | Bat species† | ID method | Province | Coordinates | Site |
|------------------------------|-----------------|---|-------------------------------|----------|--------------------------|-----------------|
| UP 1494 | 2012 Jun 12 | <i>Hipposideros caffer</i> | Morphologic | Limpopo | -24.11487, 30.12151 | Matlapitsi Cave |
| UP 1495 | 2012 Jun 12 | <i>Hipposideros caffer</i> | Morphologic | Limpopo | -24.11487, 30.12151 | Matlapitsi Cave |
| UP 1540 | 2012 Aug 19 | <i>Nycteris thebaica</i> | Morphologic | Limpopo | -24.777490, 27.734082 | Rooiberg |
| UP 1547 | 2012 Sep 20 | <i>Tadarida aegyptiaca</i> | Genetic | Gauteng | -25.736022, 28.190374 | Pretoria Zoo |
| UP 1601 | 2012 Nov 08 | <i>Miniopterus natalensis</i> | Morphologic | Limpopo | -24.11487, 30.12151 | Matlapitsi Cave |
| UP 1604 | 2012 Nov 08 | <i>Miniopterus natalensis</i> | Morphologic | Limpopo | -24.11487, 30.12151 | Matlapitsi Cave |
| UP 1700; NHCPHE MAM-29 | 2013 Jan 16 | <i>Rhinolophus simulator</i> | Museum voucher | Limpopo | -24.58943, 27.69429 | Donkerpoort 448 |
| UP 1702; NHCPHE MAM-45 | 2013 Jan 16 | <i>Miniopterus natalensis</i> | Museum voucher | Limpopo | -24.58943, 27.69429 | Donkerpoort 448 |
| UP 1703; TM50559 | 2013 Jan 17 | <i>Miniopterus natalensis</i> | Museum voucher | Limpopo | -24.58943, 27.69429 | Donkerpoort 448 |
| UP 1717; NHCPHE MAM-30 | 2013 Jan 18 | <i>Miniopterus natalensis</i> | Museum voucher | Limpopo | -24.58943, 27.69429 | Donkerpoort 448 |
| UP 1718; TM50560 | 2013 Jan 18 | <i>Miniopterus natalensis</i> | Museum voucher | Limpopo | -24.58941, 27.68473 | Randstephne 455 |
| UP 1719; NHCPHE MAM-31 | 2013 Jan 18 | <i>Miniopterus natalensis</i> | Museum voucher | Limpopo | -24.58941, 27.68473 | Randstephne 455 |
| UP 1723; TM50561 | 2013 Jan 18 | <i>Miniopterus natalensis</i> | Museum voucher | Limpopo | -24.58941, 27.68473 | Randstephne 455 |
| UP 1731; NHCPHE MAM-46 | 2013 Jan 18 | <i>Miniopterus natalensis</i> | Museum voucher | Limpopo | -24.58941, 27.68473 | Randstephne 455 |
| UP 1764; NHCPHE MAM-47 | 2013 Jan 20 | <i>Miniopterus natalensis</i> | Museum voucher | Limpopo | -24.59751, 27.67145 | Randstephne 455 |
| UP 1786; NHCPHE MAM-32 | 2013 Jan 20 | <i>Miniopterus natalensis</i> | Museum voucher | Limpopo | -24.59751, 27.67145 | Randstephne 455 |
| UP 1787; TM49186 | 2013 Jan 19 | <i>Neoromicia (Laeophotis) capensis</i> | Genetic, Museum voucher | Limpopo | -24.59751, 27.67145 | Randstephne 455 |
| UP 1788; TM49187 | 2013 Jan 19 | <i>Pipistrellus rusticus</i> | Museum voucher | Limpopo | -24.59751, 27.67145 | Randstephne 455 |
| UP 1790; TM50558 | 2013 Jan 20 | <i>Rhinolophus simulator</i> | Museum voucher | Limpopo | -24.59751, 27.67145 | Randstephne 455 |
| UP 1791; TM50589 | 2013 Jan 20 | <i>Rhinolophus simulator</i> | Museum voucher | Limpopo | -24.59751, 27.67145 | Randstephne 455 |
| UP 1792; TM50554 | 2013 Jan 20 | <i>Scotophilus dinganii</i> | Museum voucher | Limpopo | -24.59751, 27.67145 | Randstephne 455 |
| UP 1793; TM50555 | 2013 Jan 20 | <i>Scotophilus dinganii</i> | Museum voucher | Limpopo | -24.59751, 27.67145 | Randstephne 455 |
| UP 1794; NHCPHE MAM-28 | 2013 Jan 20 | <i>Scotophilus dinganii</i> | Museum voucher | Limpopo | -24.59751, 27.67145 | Randstephne 455 |
| UP 1795; TM50553 | 2013 Jan 20 | <i>Scotophilus dinganii</i> | Museum voucher | Limpopo | -24.59751, 27.67145 | Randstephne 455 |
| UP 1808; TM50551 | 2013 Jan 22 | <i>Nycteris thebaica</i> | Museum voucher | Limpopo | -24.6181, 27.65231 | Madimatle Cave |
| UP 1810; TM50552 | 2013 Jan 22 | <i>Nycteris thebaica</i> | Museum voucher | Limpopo | -24.6181, 27.65231 | Madimatle Cave |
| UP 1811; NHCPHE MAM-27 | 2013 Jan 22 | <i>Nycteris thebaica</i> | Genetic, Museum voucher | Limpopo | -24.6181, 27.65231 | Madimatle Cave |
| UP 1816, TM48672 | 2013 Feb 05 | <i>Cloeotis percivali</i> | Museum voucher | Limpopo | -24.11487, 30.12151 | Matlapitsi Cave |
| UP 1862, TM48673 | 2013 Feb 05 | <i>Rhinolophus simulator</i> | Museum voucher | Limpopo | -24.11487, 30.12151 | Matlapitsi Cave |

| Laboratory no.* | Collection date | Bat species† | ID method | Province | Coordinates | Site |
|---------------------|-----------------|-----------------------------------|-------------------------------|----------|--------------------------|---|
| UP 1863, TM48674 | 2013 Feb 05 | <i>Cloeotis percivali</i> | Museum voucher | Limpopo | -24.11487, 30.12151 | Matlapitsi Cave |
| UP 1864, TM48675 | 2013 Feb 05 | <i>Rhinolophus darlingi</i> | Museum voucher | Limpopo | -24.11487, 30.12151 | Matlapitsi Cave |
| UP 1865, TM48676 | 2013 Feb 05 | <i>Myotis tricolor</i> | Museum voucher | Limpopo | -24.11487, 30.12151 | Matlapitsi Cave |
| UP 2002, TM48677 | 2013 Mar 05 | <i>Hipposideros caffer</i> | Museum voucher | Limpopo | -24.11487, 30.12151 | Matlapitsi Cave |
| UP 2003, TM48678 | 2013 Mar 05 | <i>Hipposideros caffer</i> | Museum voucher | Limpopo | -24.11487, 30.12151 | Matlapitsi Cave |
| UP 2004, TM48679 | 2013 Mar 05 | <i>Rhinolophus clivosus</i> | Museum voucher | Limpopo | -24.11487, 30.12151 | Matlapitsi Cave |
| UP 2005, TM48680 | 2013 Mar 05 | <i>Rhinolophus darlingi</i> | Museum voucher | Limpopo | -24.11487, 30.12151 | Matlapitsi Cave |
| UP 2006, TM48681 | 2013 Mar 05 | <i>Rhinolophus clivosus</i> | Museum voucher | Limpopo | -24.11487, 30.12151 | Matlapitsi Cave |
| UP 2007, TM48682 | 2013 Mar 05 | <i>Rhinolophus clivosus</i> | Museum voucher | Limpopo | -24.11487, 30.12151 | Matlapitsi Cave |
| UP 2008, TM48683 | 2013 Mar 05 | <i>Rhinolophus darlingi</i> | Museum voucher | Limpopo | -24.11487, 30.12151 | Matlapitsi Cave |
| UP 2009, TM48684 | 2013 Mar 05 | <i>Rhinolophus darlingi</i> | Museum voucher | Limpopo | -24.11487, 30.12151 | Matlapitsi Cave |
| UP 2010, TM48685 | 2013 Mar 05 | <i>Hipposideros caffer</i> | Museum voucher | Limpopo | -24.11487, 30.12151 | Matlapitsi Cave |
| UP 2011, TM48686 | 2013 Mar 05 | <i>Hipposideros caffer</i> | Museum voucher | Limpopo | -24.11487, 30.12151 | Matlapitsi Cave |
| UP 2766, TM50659 | 2013 Jul 02 | <i>Miniopterus natalensis</i> | Museum voucher | Limpopo | -24.11487, 30.12151 | Matlapitsi Cave |
| UP 3012, TM50645 | 2013 Jul 08 | <i>Miniopterus natalensis</i> | Genetic, Museum voucher | Limpopo | -24.11487, 30.12151 | Matlapitsi Cave |
| UP 3270 | 2013 Oct 02 | <i>Miniopterus natalensis</i> | Morphologic | Limpopo | -24.11487, 30.12151 | Matlapitsi Cave |
| UP 3271 | 2013 Oct 02 | <i>Miniopterus natalensis</i> | Morphologic | Limpopo | -24.11487, 30.12151 | Matlapitsi Cave |
| UP 3272 | 2013 Oct 02 | <i>Miniopterus natalensis</i> | Morphologic | Limpopo | -24.11487, 30.12151 | Matlapitsi Cave |
| UP 3273 | 2013 Oct 02 | <i>Miniopterus natalensis</i> | Morphologic | Limpopo | -24.11487, 30.12151 | Matlapitsi Cave |
| UP 3274 | 2013 Oct 02 | <i>Miniopterus natalensis</i> | Morphologic | Limpopo | -24.11487, 30.12151 | Matlapitsi Cave |
| UP 3435, TM50662 | 2013 Nov 05 | <i>Miniopterus natalensis</i> | Museum voucher | Limpopo | -24.11487, 30.12151 | Matlapitsi Cave |
| UP 3465, TM50658 | 2013 Nov 05 | <i>Cloeotis percivali</i> | Museum voucher | Limpopo | -24.11487, 30.12151 | Matlapitsi Cave |
| UP 3563 | 2013 Nov 26 | <i>Miniopterus natalensis</i> | Morphologic | Limpopo | -24.11487, 30.12151 | Matlapitsi Cave |
| UP 3566 | 2013 Nov 26 | <i>Miniopterus natalensis</i> | Morphologic | Limpopo | -24.11487, 30.12151 | Matlapitsi Cave |
| UP 3567 | 2013 Nov 26 | <i>Miniopterus natalensis</i> | Morphologic | Limpopo | -24.11487, 30.12151 | Matlapitsi Cave |
| UP 3568 | 2013 Nov 26 | <i>Miniopterus natalensis</i> | Morphologic | Limpopo | -24.11487, 30.12151 | Matlapitsi Cave |
| UP 3569 | 2013 Nov 26 | <i>Miniopterus natalensis</i> | Morphologic | Limpopo | -24.11487, 30.12151 | Matlapitsi Cave |
| UP 3610 | 2013 Nov 26 | <i>Miniopterus natalensis</i> | Morphologic | Limpopo | -24.11487, 30.12151 | Matlapitsi Cave |
| UP 3664 | 2013 Nov 27 | <i>Miniopterus natalensis</i> | Morphologic | Limpopo | -24.11487, 30.12151 | Matlapitsi Cave |
| UP 3665 | 2013 Nov 27 | <i>Hipposideros caffer</i> | Morphologic | Limpopo | -24.11487, 30.12151 | Matlapitsi Cave |
| UP 3666 | Not recorded | <i>Tadarida aegyptiaca</i> | Genetic | Gauteng | -25.751234, 28.276352 | Council for Scientific and Industrial Research |
| UP 3801; TM50567 | 2014 Jan 20 | <i>Miniopterus natalensis</i> | Museum voucher | Limpopo | -24.6181, 27.65231 | Madimatle Cave |
| UP 3802; TM50564 | 2014 Jan 20 | <i>Rhinolophus simulator</i> | Museum voucher | Limpopo | -24.6181, 27.65231 | Madimatle Cave |

| Laboratory no.* | Collection date | Bat species† | ID method | Province | Coordinates | Site |
|------------------------|-----------------|---|-------------------------|------------|-----------------------|-----------------|
| UP 3803 | 2014 Jan 21 | <i>Miniopterus natalensis</i> | Morphologic | Limpopo | -24.6181, 27.65231 | Madimatle Cave |
| UP 3804; NHCPHE MAM-36 | 2014 Jan 21 | <i>Miniopterus natalensis</i> | Museum voucher | Limpopo | -24.6181, 27.65231 | Madimatle Cave |
| UP 3805; TM50568 | 2014 Jan 21 | <i>Miniopterus natalensis</i> | Museum voucher | Limpopo | -24.6181, 27.65231 | Madimatle Cave |
| UP 3815; NHCPHE MAM-37 | 2014 Jan 21 | <i>Nycteris thebaica</i> | Genetic, Museum voucher | Limpopo | -24.6181, 27.65231 | Madimatle Cave |
| UP 3825; TM50569 | 2014 Jan 21 | <i>Rhinolophus smithersi</i> | Museum voucher | Limpopo | -24.6181, 27.65231 | Madimatle Cave |
| UP 3826; NHCPHE MAM-38 | 2014 Jan 21 | <i>Rhinolophus smithersi</i> | Museum voucher | Limpopo | -24.6181, 27.65231 | Madimatle Cave |
| UP 3830; TM50570 | 2014 Jan 21 | <i>Rhinolophus simulator</i> | Museum voucher | Limpopo | -24.6181, 27.65231 | Madimatle Cave |
| UP 3887, TM49146 | 2014 Feb 05 | <i>Neoromicia (Laephotis) nana</i> | Genetic, Museum voucher | Limpopo | -24.11487, 30.12151 | Matlapitsi Cave |
| UP 3917, TM49148 | 2014 Feb 05 | <i>Pipistrellus hesperidus</i> | Museum voucher | Limpopo | -24.11487, 30.12151 | Matlapitsi Cave |
| UP 3918, TM48149 | 2014 Feb 05 | <i>Pipistrellus hesperidus</i> | Museum voucher | Limpopo | -24.11487, 30.12151 | Matlapitsi Cave |
| UP 3920, TM49168 | 2014 Feb 11 | <i>Pipistrellus hesperidus</i> | Morphologic | Mpumalanga | -25.71475, 28.98213 | Blaauwpoort 257 |
| UP 3921, TM49169 | 2014 Feb 12 | <i>Neoromicia (Laephotis) capensis</i> | Museum voucher | Mpumalanga | -25.71113, 29.01755 | Blaauwpoort 257 |
| UP 3922, TM49170 | 2014 Feb 12 | <i>Neoromicia (Laephotis) capensis</i> | Museum voucher | Mpumalanga | -25.72596, 28.99048 | Blaauwpoort 257 |
| UP 3923, TM49171 | 2014 Feb 12 | <i>Neoromicia (Laephotis) capensis</i> | Museum voucher | Mpumalanga | -25.72596, 28.99048 | Blaauwpoort 257 |
| UP 3924, TM49172 | 2014 Feb 12 | <i>Pipistrellus rusticus</i> | Morphologic | Mpumalanga | -25.72596, 28.99048 | Blaauwpoort 257 |
| UP 3925, TM49173 | 2014 Feb 15 | <i>Neoromicia (Laephotis) zuluensis</i> | Morphologic | Mpumalanga | -25.65755, 29.01664 | Blaauwpoort 257 |
| UP 3926, TM49174 | 2014 Feb 21 | <i>Rhinolophus clivosus</i> | Morphologic | Mpumalanga | -25.6862, 29.0121 | Blaauwpoort 257 |
| UP 3927, TM49175 | 2014 Feb 22 | <i>Myotis tricolor</i> | Morphologic | Mpumalanga | -25.71454, 28.98284 | Blaauwpoort 257 |
| UP 3928 | 2009 Sep 30 | <i>Neoromicia (Laephotis) capensis</i> | Genetic | Gauteng | -25.736022, 28.190374 | Pretoria Zoo |
| UP 4105, NHCPHE MAM-73 | 2014 Apr 08 | <i>Rhinolophus clivosus</i> | Museum voucher | Limpopo | -24.6181, 27.65231 | Madimatle Cave |
| UP 4142, TM50565 | 2014 May 07 | <i>Rhinolophus simulator</i> | Museum voucher | Limpopo | -24.6181, 27.65231 | Madimatle Cave |
| UP 4143, NHCPHE MAM-35 | 2014 May 07 | <i>Rhinolophus simulator</i> | Museum voucher | Limpopo | -24.6181, 27.65231 | Madimatle Cave |
| UP 4150, TM50566 | 2014 May 07 | <i>Rhinolophus simulator</i> | Museum voucher | Limpopo | -24.6181, 27.65231 | Madimatle Cave |
| UP 4165 | 2014 May 13 | <i>Miniopterus natalensis</i> | Morphologic | Limpopo | -24.11487, 30.12151 | Matlapitsi Cave |
| UP 4166 | 2014 May 13 | <i>Miniopterus natalensis</i> | Genetic | Limpopo | -24.11487, 30.12151 | Matlapitsi Cave |
| UP 4532; TM50590 | 2014 Sep 06 | <i>Nycteris thebaica</i> | Museum voucher | Limpopo | -24.6181, 27.65231 | Madimatle Cave |
| UP 4701, TM50636 | 2014 Nov 28 | <i>Miniopterus natalensis</i> | Genetic, Museum voucher | Limpopo | -24.59751, 27.67145 | Randstephne 455 |
| UP 4702, TM50637 | 2014 Nov 28 | <i>Miniopterus natalensis</i> | Museum voucher | Limpopo | -24.59751, 27.67145 | Randstephne 455 |

| Laboratory no.* | Collection date | Bat species† | ID method | Province | Coordinates | Site |
|------------------------|-----------------|--|-------------------------|---------------|-----------------------|-----------------------|
| UP 4749 | 2014 Dec 02 | <i>Miniopterus natalensis</i> | Morphologic | Limpopo | -24.11487, 30.12151 | Matlapitsi Cave |
| UP 4750 | 2014 Dec 02 | <i>Rhinolophus simulator</i> | Morphologic | Limpopo | -24.11487, 30.12151 | Matlapitsi Cave |
| UP 4830, TM49113 | 2015 Dec 01 | <i>Rhinolophus simulator</i> | Museum voucher | Limpopo | -24.11487, 30.12151 | Matlapitsi Cave |
| UP 4831, TM49150 | 2015 Feb 01 | <i>Rhinolophus simulator</i> | Museum voucher | Limpopo | -24.11487, 30.12151 | Matlapitsi Cave |
| UP 4840, TM49151 | 2015 Feb 01 | <i>Hipposideros caffer</i> | Museum voucher | Limpopo | -24.11487, 30.12151 | Matlapitsi Cave |
| UP 4845, TM49152 | 2015 Feb 01 | <i>Myotis tricolor</i> | Museum voucher | Limpopo | -24.11487, 30.12151 | Matlapitsi Cave |
| UP 4903, TM49160 | 2015 Feb 02 | <i>Rhinolophus clivosus</i> | Museum voucher | Limpopo | -24.11487, 30.12151 | Matlapitsi Cave |
| UP 4904, TM49161 | 2015 Feb 02 | <i>Myotis tricolor</i> | Museum voucher | Limpopo | -24.11487, 30.12151 | Matlapitsi Cave |
| UP 4908, NHCPHE MAM-50 | 2015 Feb 23 | <i>Rhinolophus simulator</i> | Museum voucher | Limpopo | -24.6181, 27.65231 | Madimatle Cave |
| UP 4909, TM50591 | 2015 Feb 23 | <i>Nycteris thebaica</i> | Museum voucher | Limpopo | -24.6181, 27.65231 | Madimatle Cave |
| UP 4918, NHCPHE MAM-51 | 2015 Feb 23 | <i>Rhinolophus blasii</i> | Museum voucher | Limpopo | -24.6181, 27.65231 | Madimatle Cave |
| UP 4970, NHCPHE MAM-72 | 2015 Feb 27 | <i>Myotis tricolor</i> | Museum voucher | Limpopo | -24.6181, 27.65231 | Madimatle Cave |
| UP 4971, NHCPHE MAM-52 | 2015 Feb 27 | <i>Pipistrellus rusticus</i> | Museum voucher | Limpopo | -24.6181, 27.65231 | Madimatle Cave |
| UP 4972, TM49189 | 2015 Feb 28 | <i>Neoromicia (Laephotis) capensis</i> | Museum voucher | Limpopo | -24.61737, 27.68773 | Jonker Trust Farm |
| UP 4974, TM50592 | 2015 Feb 27 | <i>Rhinolophus simulator</i> | Museum voucher | Limpopo | -24.6181, 27.65231 | Madimatle Cave |
| UP 4985, NHCPHE MAM-54 | 2015 Mar 01 | <i>Rhinolophus blasii</i> | Museum voucher | Limpopo | -24.6181, 27.65231 | Madimatle Cave |
| UP 4988, TM50593 | 2015 Mar 01 | <i>Rhinolophus blasii</i> | Museum voucher | Limpopo | -24.6181, 27.65231 | Madimatle Cave |
| UP 4997, NHCPHE MAM-53 | 2015 Mar 02 | <i>Rhinolophus simulator</i> | Museum voucher | Limpopo | -24.6181, 27.65231 | Madimatle Cave |
| UP 5013, TM49069 | 2015 Mar 04 | <i>Neoromicia (Laephotis) capensis</i> | Museum voucher | Limpopo | -24.625197, 27.697872 | Jonker Trust Farm |
| UP 5014, TM49190 | 2015 Mar 04 | <i>Neoromicia (Laephotis) capensis</i> | Museum voucher | Limpopo | -24.625197, 27.697872 | Jonker Trust Farm |
| UP 5023, TM49164 | 2015 Apr 21 | <i>Rhinolophus clivosus</i> | Genetic, Museum voucher | Gauteng | -25.897071, 28.221455 | Grootboom Cave, Irene |
| UP 5024, TM49165 | 2015 Apr 21 | <i>Rhinolophus clivosus</i> | Genetic, Museum voucher | Gauteng | -25.897071, 28.221455 | Grootboom Cave, Irene |
| UP 5025, TM49166 | 2015 Apr 21 | <i>Miniopterus natalensis</i> | Museum voucher | Gauteng | -25.897071, 28.221455 | Grootboom Cave, Irene |
| UP 5026, TM49167 | 2015 Apr 21 | <i>Miniopterus natalensis</i> | Museum voucher | Gauteng | -25.897071, 28.221455 | Grootboom Cave, Irene |
| UP 5027, TM49176 | 2015 Apr 16 | <i>Rhinolophus clivosus</i> | Museum voucher | KwaZulu-Natal | -29.48694, 29.89806 | Wakefield Farm |
| UP 5028, TM49177 | 2015 Apr 17 | <i>Rhinolophus clivosus</i> | Museum voucher | KwaZulu-Natal | -29.48694, 29.89806 | Wakefield Farm |
| UP 5029, TM49178 | 2015 Apr 17 | <i>Rhinolophus swinnyi</i> | Museum voucher | KwaZulu-Natal | -29.48694, 29.89806 | Wakefield Farm |
| UP 5030, TM49179 | 2015 Apr 17 | <i>Rhinolophus swinnyi</i> | Museum voucher | KwaZulu-Natal | -29.48694, 29.89806 | Wakefield Farm |

| Laboratory no.* | Collection date | Bat species† | ID method | Province | Coordinates | Site |
|-----------------------|-----------------|--|-------------------------|---------------|-----------------------|-----------------------|
| UP 5031, TM49180 | 2015 Apr 17 | <i>Rhinolophus swinnyi</i> | Museum voucher | KwaZulu-Natal | -29.48694, 29.89806 | Wakefield Farm |
| UP 5035, TM49181 | 2015 Apr 20 | <i>Laephotis botswanae</i> | Museum voucher | KwaZulu-Natal | -29.48694, 29.89806 | Wakefield Farm |
| UP 5036, TM49182 | 2015 Apr 20 | <i>Neoromicia (Laephotis) capensis</i> | Museum voucher | KwaZulu-Natal | -29.48694, 29.89806 | Wakefield Farm |
| UP 5038, TM49183 | 2015 Apr 20 | <i>Neoromicia (Laephotis) capensis</i> | Genetic, Museum voucher | KwaZulu-Natal | -29.48694, 29.89806 | Wakefield Farm |
| UP 5039, TM49184 | 2015 Apr 21 | <i>Rhinolophus clivosus</i> | Museum voucher | KwaZulu-Natal | -29.48694, 29.89806 | Wakefield Farm |
| UP 5040, TM49195 | 2015 Apr 29 | <i>Tadarida aegyptiaca</i> | Museum voucher | KwaZulu-Natal | -29.48694, 29.89806 | Wakefield Farm |
| UP 5060 | 2015 Mar 03 | <i>Rhinolophus simulator</i> | Morphologic | Limpopo | -24.11487, 30.12151 | Matlapitsi Cave |
| UP 5061 | 2015 Mar 03 | <i>Rhinolophus simulator</i> | Morphologic | Limpopo | -24.11487, 30.12151 | Matlapitsi Cave |
| UP 5066 | 2015 Mar 03 | <i>Rhinolophus simulator</i> | Morphologic | Limpopo | -24.11487, 30.12151 | Matlapitsi Cave |
| UP 5121 | 2015 Mar 04 | <i>Rhinolophus clivosus</i> | Morphologic | Limpopo | -24.11487, 30.12151 | Matlapitsi Cave |
| UP 5134 | 2015 Mar 04 | <i>Miniopterus natalensis</i> | Genetic | Limpopo | -24.11487, 30.12151 | Matlapitsi Cave |
| UP 5233 | 2015 May 06 | <i>Miniopterus natalensis</i> | Genetic | Limpopo | -24.11487, 30.12151 | Matlapitsi Cave |
| UP 5275, TM49163 | 2015 May 06 | <i>Rhinolophus clivosus</i> | Museum voucher | Limpopo | -24.11487, 30.12151 | Matlapitsi Cave |
| UP 5279, NHCPE MAM-74 | 2015 May 11 | <i>Nycteris thebaica</i> | Museum voucher | Limpopo | -24.6181, 27.65231 | Madimatle Cave |
| UP 5287, NHCPE MAM-75 | 2015 May 11 | <i>Rhinolophus blasii</i> | Museum voucher | Limpopo | -24.6181, 27.65231 | Madimatle Cave |
| UP 5296, NHCPE MAM-76 | 2015 May 11 | <i>Rhinolophus simulator</i> | Museum voucher | Limpopo | -24.6181, 27.65231 | Madimatle Cave |
| UP 5304; TM49194 | 2015 May 11 | <i>Neoromicia (Laephotis) capensis</i> | Museum voucher | KwaZulu-Natal | -29.331947, 30.27753 | Welgevonden Farm |
| UP 5319, NHCPE MAM-77 | 2015 May 12 | <i>Nycteris thebaica</i> | Museum voucher | Limpopo | -24.6181, 27.65231 | Madimatle Cave |
| UP 5431, TM50664 | 2015 Jul 08 | <i>Miniopterus natalensis</i> | Museum voucher | Limpopo | -24.11487, 30.12151 | Matlapitsi Cave |
| UP 5449, TM50663 | 2015 Jul 15 | <i>Miniopterus natalensis</i> | Museum voucher | Gauteng | -25.897071, 28.221455 | Grootboom Cave, Irene |
| UP 5450, TM50652 | 2015 Jul 15 | <i>Miniopterus natalensis</i> | Museum voucher | Gauteng | -25.897071, 28.221455 | Grootboom Cave, Irene |
| UP 5463, TM50594 | 2015 Jul 20 | <i>Nycteris thebaica</i> | Museum voucher | Limpopo | -24.6181, 27.65231 | Madimatle Cave |
| UP 5467, NHCPE MAM-55 | 2015 Jul 20 | <i>Nycteris thebaica</i> | Museum voucher | Limpopo | -24.6181, 27.65231 | Madimatle Cave |
| UP 5478, TM50595 | 2015 Jul 20 | <i>Rhinolophus simulator</i> | Museum voucher | Limpopo | -24.6181, 27.65231 | Madimatle Cave |
| UP 5491, NHCPE MAM-16 | 2015 Jul 21 | <i>Nycteris thebaica</i> | Genetic, Museum voucher | Limpopo | -24.6181, 27.65231 | Madimatle Cave |
| UP 5608 | 2015 Sep 02 | <i>Miniopterus natalensis</i> | Genetic | Limpopo | -24.11487, 30.12151 | Matlapitsi Cave |
| UP 5619 | 2015 Sep 02 | <i>Miniopterus natalensis</i> | Genetic | Limpopo | -24.11487, 30.12151 | Matlapitsi Cave |
| UP 5744, NHCPE MAM-78 | 2015 Sep 16 | <i>Rhinolophus simulator</i> | Museum voucher | Limpopo | -24.6181, 27.65231 | Madimatle Cave |
| UP 5784 | 2015 Sep 21 | <i>Hipposideros caffer</i> | Morphologic | Mpumalanga | -24.996531, 31.591762 | Kruger National Park- |

| Laboratory no.* | Collection date | Bat species† | ID method | Province | Coordinates | Site |
|------------------------|-----------------|--------------------------------|-------------------------|------------|-----------------------|----------------------------|
| UP 5830 | 2015 Oct 27 | <i>Rhinolophus blasii</i> | Morphologic | Limpopo | -24.11487, 30.12151 | Matlapitsi Cave |
| UP 5842 | 2015 Oct 27 | <i>Miniopterus natalensis</i> | Morphologic | Limpopo | -24.11487, 30.12151 | Matlapitsi Cave |
| UP 5846 | 2015 Oct 27 | <i>Miniopterus natalensis</i> | Morphologic | Limpopo | -24.11487, 30.12151 | Matlapitsi Cave |
| UP 5927 | 2015 Oct 26 | <i>Miniopterus natalensis</i> | Genetic | Limpopo | -24.11487, 30.12151 | Matlapitsi Cave |
| UP 5928 | 2015 Oct 26 | <i>Miniopterus natalensis</i> | Morphologic | Limpopo | -24.11487, 30.12151 | Matlapitsi Cave |
| UP 5929 | 2015 Oct 26 | <i>Miniopterus fraterculus</i> | Genetic | Limpopo | -24.11487, 30.12151 | Matlapitsi Cave |
| UP 5930 | 2015 Oct 26 | <i>Miniopterus natalensis</i> | Morphologic | Limpopo | -24.11487, 30.12151 | Matlapitsi Cave |
| UP 5934 | 2015 Oct 27 | <i>Miniopterus natalensis</i> | Morphologic | Limpopo | -24.11487, 30.12151 | Matlapitsi Cave |
| UP 6004, NHCPHE MAM-57 | 2015 Nov 10 | <i>Nycteris thebaica</i> | Museum voucher | Limpopo | -24.6181, 27.65231 | Madimatle Cave |
| UP 6076, TM50597 | 2015 Nov 12 | <i>Cloeotis percivali</i> | Museum voucher | Limpopo | -24.6181, 27.65231 | Madimatle Cave |
| UP 6080, NHCPHE MAM-58 | 2015 Nov 12 | <i>Cloeotis percivali</i> | Museum voucher | Limpopo | -24.6181, 27.65231 | Madimatle Cave |
| UP 6120 | 2016 Jan 12 | <i>Myotis tricolor</i> | Morphologic | Limpopo | -24.11487, 30.12151 | Matlapitsi Cave |
| UP 6246, NHCPHE MAM-59 | 2016 Jan 19 | <i>Miniopterus natalensis</i> | Genetic, Museum voucher | Limpopo | -24.6181, 27.65231 | Madimatle Cave |
| UP 6247, TM50598 | 2016 Jan 19 | <i>Miniopterus natalensis</i> | Museum voucher | Limpopo | -24.6181, 27.65231 | Madimatle Cave |
| UP 6290, TM49236 | 2016 Jan 20 | <i>Miniopterus natalensis</i> | Museum voucher | Limpopo | -24.6181, 27.65231 | Madimatle Cave |
| UP 6300, NHCPHE MAM-61 | 2016 Jan 20 | <i>Nycteris thebaica</i> | Museum voucher | Limpopo | -24.6181, 27.65231 | Madimatle Cave |
| UP 6302, TM50599 | 2016 Jan 20 | <i>Miniopterus natalensis</i> | Museum voucher | Limpopo | -24.6181, 27.65231 | Madimatle Cave |
| UP 6381, TM50572 | 2016 Apr 05 | <i>Rhinolophus simulator</i> | Museum voucher | Limpopo | -24.6181, 27.65231 | Madimatle Cave |
| UP 6395, NHCPHE MAM-39 | 2016 Apr 07 | <i>Rhinolophus simulator</i> | Museum voucher | Limpopo | -24.6181, 27.65231 | Madimatle Cave |
| UP 6399, TM50571 | 2016 Apr 07 | <i>Miniopterus natalensis</i> | Museum voucher | Limpopo | -24.6181, 27.65231 | Madimatle Cave |
| UP 6795, TM50665 | 2016 Jun 06 | <i>Rhinolophus simulator</i> | Museum voucher | Limpopo | -24.6181, 27.65231 | Madimatle Cave |
| UP 6814, NHCPHE MAM-17 | 2016 Jun 07 | <i>Rhinolophus smithersi</i> | Museum voucher | Limpopo | -24.6181, 27.65231 | Madimatle Cave |
| UP 6826, NHCPHE MAM-42 | 2016 Jun 08 | <i>Rhinolophus simulator</i> | Museum voucher | Limpopo | -24.6181, 27.65231 | Madimatle Cave |
| UP 6848 | 2016 Jun 21 | <i>Miniopterus natalensis</i> | Morphologic | Limpopo | -24.11487, 30.12151 | Matlapitsi Cave |
| UP 7094, TM50574 | 2016 Sep 05 | <i>Miniopterus natalensis</i> | Museum voucher | Limpopo | -24.6181, 27.65231 | Madimatle Cave |
| UP 7109, NHCPHE MAM-18 | 2016 Sep 06 | <i>Rhinolophus simulator</i> | Museum voucher | Limpopo | -24.6181, 27.65231 | Madivirology Sammatle Cave |
| UP 7161 | 2016 Sep 14 | <i>Miniopterus natalensis</i> | Morphologic | North West | -26.036079, 26.704976 | Die Coetzee Boerdery |
| UP 7255, TM 50575 | 2016 Nov 07 | <i>Miniopterus natalensis</i> | Morphologic | Limpopo | -24.6181, 27.65231 | Madimatle Cave |
| UP 7278, NHCPHE MAM-19 | 2016 Nov 08 | <i>Rhinolophus simulator</i> | Museum voucher | Limpopo | -24.6181, 27.65231 | Madimatle Cave |

| Laboratory no.* | Collection date | Bat species† | ID method | Province | Coordinates | Site |
|------------------------|-----------------|--------------------------------|-------------------------|----------|-----------------------|-----------------------|
| UP 7301, TM50646 | 2016 Nov 14 | <i>Miniopterus natalensis</i> | Genetic, Museum voucher | Limpopo | -24.11487, 30.12151 | Matlapitsi Cave |
| UP 7408 | 2017 Feb 16 | <i>Miniopterus natalensis</i> | Morphologic | Gauteng | -25.897071, 28.221455 | Grootboom Cave, Irene |
| UP7560 | 2017 Mar 28 | <i>Rhinolophus clivosus</i> | Morphologic | Limpopo | -24.6181, 27.65231 | Madimatle Cave |
| UP 7561, TM50583 | 2017 Mar 28 | <i>Rhinolophus blasii</i> | Museum voucher | Limpopo | -24.6181, 27.65231 | Madimatle Cave |
| UP 7585, TM50584 | 2017 Mar 29 | <i>Miniopterus natalensis</i> | Museum voucher | Limpopo | -24.6181, 27.65231 | Madimatle Cave |
| UP 7766, TM50647 | 2017 May 03 | <i>Miniopterus natalensis</i> | Museum voucher | Limpopo | -24.11487, 30.12151 | Matlapitsi Cave |
| UP 7767, TM50648 | 2017 May 03 | <i>Miniopterus natalensis</i> | Genetic, Museum voucher | Limpopo | -24.11487, 30.12151 | Matlapitsi Cave |
| UP 7770, TM50650 | 2017 May 03 | <i>Miniopterus natalensis</i> | Museum voucher | Limpopo | -24.11487, 30.12151 | Matlapitsi Cave |
| UP 7771, TM50651 | 2017 May 03 | <i>Miniopterus natalensis</i> | Museum voucher | Limpopo | -24.11487, 30.12151 | Matlapitsi Cave |
| UP 7880, NHCphe MAM-69 | 2017 May 15 | <i>Miniopterus natalensis</i> | Museum voucher | Limpopo | -24.11487, 30.12151 | Matlapitsi Cave |
| UP 7886, NHCphe MAM-70 | 2017 May 15 | <i>Rhinolophus blasii</i> | Museum voucher | Limpopo | -24.11487, 30.12151 | Matlapitsi Cave |
| UP 7905, NHCphe MAM-71 | 2017 May 17 | <i>Nycteris thebaica</i> | Museum voucher | Limpopo | -24.6181, 27.65231 | Madimatle Cave |
| UP 7922, NHCphe MAM-62 | 2017 May 24 | <i>Miniopterus natalensis</i> | Museum voucher | Gauteng | -25.897071, 28.221455 | Grootboom Cave, Irene |
| UP 7933 | 2013 Jul 08 | <i>Myotis tricolor</i> | Morphologic | Limpopo | -24.11487, 30.12151 | Matlapitsi Cave |
| UP 7936 | 2013 Jul 08 | <i>Myotis tricolor</i> | Morphologic | Limpopo | -24.11487, 30.12151 | Matlapitsi Cave |
| UP 7937 | 2013 Sep 03 | <i>Rhinolophus clivosus</i> | Genetic | Limpopo | -24.11487, 30.12151 | Matlapitsi Cave |
| UP 7943, TM50644 | 2017 Aug 28 | <i>Nycteris thebaica</i> | Museum voucher | Limpopo | -24.6181, 27.65231 | Madimatle Cave |
| UP 7949, TM50639 | 2017 Aug 28 | <i>Miniopterus natalensis</i> | Museum voucher | Limpopo | -24.6181, 27.65231 | Madimatle Cave |
| UP 7982, TM50655 | 2017 Sep 07 | <i>Miniopterus natalensis</i> | Museum voucher | Gauteng | -25.897071, 28.221455 | Grootboom Cave, Irene |
| UP 7983, TM50656 | 2017 Sep 07 | <i>Miniopterus natalensis</i> | Museum voucher | Gauteng | -25.897071, 28.221455 | Grootboom Cave, Irene |
| UP 8009 | 2017 Sep 26 | <i>Rhinolophus simulator</i> | Morphologic | Limpopo | -24.11487, 30.12151 | Matlapitsi Cave |
| UP 8054 | 2017 Sep 27 | <i>Rhinolophus simulator</i> | Morphologic | Limpopo | -24.11487, 30.12151 | Matlapitsi Cave |
| UP 8106 | 2017 Sep 27 | <i>Miniopterus natalensis</i> | Genetic | Limpopo | -24.11487, 30.12151 | Matlapitsi Cave |
| UP 8107 | 2017 Sep 27 | <i>Miniopterus natalensis</i> | Genetic | Limpopo | -24.11487, 30.12151 | Matlapitsi Cave |
| UP 8132 | 2017 Sep 28 | <i>Miniopterus natalensis</i> | Morphologic | Limpopo | -24.11487, 30.12151 | Matlapitsi Cave |
| UP 8162, TM50661 | 2017 Oct 16 | <i>Miniopterus natalensis</i> | Museum voucher | Limpopo | -24.11487, 30.12151 | Matlapitsi Cave |
| UP 8167, TM50660 | 2017 Oct 16 | <i>Miniopterus fraterculus</i> | Genetic, Museum voucher | Limpopo | -24.11487, 30.12151 | Matlapitsi Cave |
| UP 8207, TM50654 | 2017 Oct 17 | <i>Rhinolophus simulator</i> | Museum voucher | Limpopo | -24.11487, 30.12151 | Matlapitsi Cave |
| UP 8235 | 2017 Oct 17 | <i>Rhinolophus simulator</i> | Morphologic | Limpopo | -24.11487, 30.12151 | Matlapitsi Cave |
| UP 8356 | 2017 Nov 07 | <i>Miniopterus natalensis</i> | Morphologic | Limpopo | -24.11487, 30.12151 | Matlapitsi Cave |

| Laboratory no.* | Collection date | Bat species† | ID method | Province | Coordinates | Site |
|-----------------------|-----------------|--|----------------|----------|---------------------|-----------------------------|
| UP 8368 | 2017 Nov 07 | <i>Rhinolophus simulator</i> | Morphologic | Limpopo | -24.11487, 30.12151 | Matlapitsi Cave |
| UP 8369 | 2017 Nov 07 | <i>Rhinolophus clivosus</i> | Morphologic | Limpopo | -24.11487, 30.12151 | Matlapitsi Cave |
| UP 8390 | 2017 Nov 07 | <i>Miniopterus natalensis</i> | Genetic | Limpopo | -24.11487, 30.12151 | Matlapitsi Cave |
| UP 8437 | 2017 Nov 08 | <i>Miniopterus natalensis</i> | Genetic | Limpopo | -24.11487, 30.12151 | Matlapitsi Cave |
| UP 8485, TM50577 | 2017 Nov 20 | <i>Nycteris thebaica</i> | Museum voucher | Limpopo | -24.6181, 27.65231 | Madimatle Cave |
| UP 8488, TM50578 | 2017 Nov 20 | <i>Miniopterus natalensis</i> | Museum voucher | Limpopo | -24.6181, 27.65231 | Madimatle Cave |
| UP 8502, TM50579 | 2017 Nov 21 | <i>Miniopterus natalensis</i> | Museum voucher | Limpopo | -24.6181, 27.65231 | Madimatle Cave |
| UP 8540, TM50580 | 2017 Nov 23 | <i>Miniopterus natalensis</i> | Museum voucher | Limpopo | -24.61335, 27.65381 | Randstephne 455 |
| UP 8555, TM50581 | 2017 Nov 23 | <i>Miniopterus natalensis</i> | Museum voucher | Limpopo | -24.61335, 27.65381 | Randstephne 455 |
| UP 8572, TM50657 | 2017 Dec 05 | <i>Rhinolophus blasii</i> | Museum voucher | Limpopo | -24.11487, 30.12151 | Matlapitsi Cave |
| UP 8599 | 2016 Dec 01 | <i>Pipistrellus rusticus</i> | Morphologic | Gauteng | -25.8852, 28.3608 | Grootfontein Country Estate |
| UP 8602 | 2018 Jan 24 | <i>Myotis tricolor</i> | Morphologic | Limpopo | -24.11487, 30.12151 | Matlapitsi Cave |
| UP 8614 | 2018 Jan 24 | <i>Rhinolophus clivosus</i> | Morphologic | Limpopo | -24.11487, 30.12151 | Matlapitsi Cave |
| UP 8615 | 2018 Jan 24 | <i>Rhinolophus simulator</i> | Morphologic | Limpopo | -24.11487, 30.12151 | Matlapitsi Cave |
| UP 8667 | 2018 Feb 07 | <i>Rhinolophus simulator</i> | Morphologic | Limpopo | -24.11487, 30.12151 | Matlapitsi Cave |
| UP 8668 | 2018 Feb 07 | <i>Rhinolophus simulator</i> | Morphologic | Limpopo | -24.11487, 30.12151 | Matlapitsi Cave |
| UP 8676 | 2018 Feb 07 | <i>Rhinolophus simulator</i> | Morphologic | Limpopo | -24.11487, 30.12151 | Matlapitsi Cave |
| UP 8679 | 2018 Feb 07 | <i>Rhinolophus clivosus</i> | Morphologic | Limpopo | -24.11487, 30.12151 | Matlapitsi Cave |
| UP 8720, TM50604 | 2018 Feb 26 | <i>Rhinolophus blasii</i> | Museum voucher | Limpopo | -24.6181, 27.65231 | Madimatle Cave |
| UP 8747, NHCPE MAM-63 | 2018 Feb 27 | <i>Neoromicia (Laephotis) capensis</i> | Museum voucher | Limpopo | -24.11487, 30.12151 | Matlapitsi Cave |
| UP 8748, TM50605 | 2018 Feb 27 | <i>Rhinolophus simulator</i> | Museum voucher | Limpopo | -24.6181, 27.65231 | Madimatle Cave |
| UP 8752, NHCPE MAM-64 | 2018 Feb 27 | <i>Nycteris thebaica</i> | Museum voucher | Limpopo | -24.6181, 27.65231 | Madimatle Cave |
| UP 8816 | 2018 Mar 06 | <i>Rhinolophus clivosus</i> | Morphologic | Limpopo | -24.11487, 30.12151 | Matlapitsi Cave |
| UP 8874 | 2018 Apr 10 | <i>Rhinolophus simulator</i> | Morphologic | Limpopo | -24.11487, 30.12151 | Matlapitsi Cave |
| UP 8876 | 2018 Apr 10 | <i>Rhinolophus blasii</i> | Morphologic | Limpopo | -24.11487, 30.12151 | Matlapitsi Cave |
| UP 8879 | 2018 Apr 10 | <i>Rhinolophus simulator</i> | Morphologic | Limpopo | -24.11487, 30.12151 | Matlapitsi Cave |
| UP 8929 | 2018 Apr 10 | <i>Rhinolophus clivosus</i> | Morphologic | Limpopo | -24.11487, 30.12151 | Matlapitsi Cave |
| UP 8932 | 2018 Apr 11 | <i>Rhinolophus simulator</i> | Morphologic | Limpopo | -24.11487, 30.12151 | Matlapitsi Cave |
| UP 9029, TM50606 | 2018 May 21 | <i>Rhinolophus blasii</i> | Museum voucher | Limpopo | -24.6181, 27.65231 | Madimatle Cave |
| UP 9042, NHCPE MAM-65 | 2018 May 21 | <i>Rhinolophus smithersi</i> | Museum voucher | Limpopo | -24.6181, 27.65231 | Madimatle Cave |
| UP 9060, TM50607 | 2018 May 22 | <i>Rhinolophus simulator</i> | Museum voucher | Limpopo | -24.6181, 27.65231 | Madimatle Cave |
| UP 9075, TM50608 | 2018 May 23 | <i>Rhinolophus simulator</i> | Museum voucher | Limpopo | -24.6181, 27.65231 | Madimatle Cave |

| Laboratory no.* | Collection date | Bat species† | ID method | Province | Coordinates | Site |
|-------------------|-----------------|--|-------------------------|----------|-----------------------|--------------------|
| UP 9689 | 2018 Jun 06 | <i>Rhinolophus simulator</i> | Morphologic | Limpopo | -24.11487, 30.12151 | Matlapitsi Cave |
| UP 9745 | 2018 Jul 18 | <i>Mops midas</i> | Morphologic | Limpopo | -24.059627, 31.043614 | Phalaborwa |
| UP 9746 | 2018 Jul 18 | <i>Mops midas</i> | Morphologic | Limpopo | -24.059627, 31.043614 | Phalaborwa |
| UP 9777, TM50653 | 2018 Jul 31 | <i>Miniopterus natalensis</i> | Museum voucher | Limpopo | -24.11487, 30.12151 | Matlapitsi Cave |
| UP 9896, TM50640 | 2018 Aug 20 | <i>Rhinolophus simulator</i> | Museum voucher | Limpopo | -24.6181, 27.65231 | Madimatle Cave |
| UP 9938, TM50641 | 2018 Aug 21 | <i>Miniopterus natalensis</i> | Museum voucher | Limpopo | -24.6181, 27.65231 | Madimatle Cave |
| UP 9946, TM50642 | 2018 Aug 22 | <i>Rhinolophus simulator</i> | Museum voucher | Limpopo | -24.6181, 27.65231 | Madimatle Cave |
| UP 9947, TM50643 | 2018 Aug 22 | <i>Rhinolophus simulator</i> | Museum voucher | Limpopo | -24.6181, 27.65231 | Madimatle Cave |
| UP 9963 | 2018 Sep 04 | <i>Rhinolophus clivosus</i> | Morphologic | Limpopo | -24.11487, 30.12151 | Matlapitsi Cave |
| UP 9964 | 2018 Sep 04 | <i>Rhinolophus blasii</i> | Morphologic | Limpopo | -24.11487, 30.12151 | Matlapitsi Cave |
| UP 10018 | 2018 Sep 05 | <i>Rhinolophus simulator</i> | Morphologic | Limpopo | -24.11487, 30.12151 | Matlapitsi Cave |
| UP 10029, TM50613 | 2018 Oct 02 | <i>Rhinolophus clivosus</i> | Museum voucher | Limpopo | -24.11487, 30.12151 | Matlapitsi Cave |
| UP 11502, TM48415 | 2011 Mar 01 | <i>Neoromicia (Laephotis) capensis</i> | Genetic, Museum voucher | Gauteng | -25.39905, 28.360783 | Kwalata Game Ranch |
| UP 11503, TM48416 | 2011 Mar 02 | <i>Pipistrellus rusticus</i> | Museum voucher | Gauteng | -25.39815, 28.35425 | Kwalata Game Ranch |
| UP 11504, TM48432 | 2011 May 04 | <i>Neoromicia (Laephotis) capensis</i> | Genetic, Museum voucher | Gauteng | -25.380267, 28.316867 | Kwalata Game Ranch |
| UP 11505, TM48373 | 2011 Jan 06 | <i>Neoromicia (Laephotis) capensis</i> | Genetic, Museum voucher | Gauteng | -25.389917, 28.322633 | Kwalata Game Ranch |
| UP 11506, TM48387 | 2011 Jan 08 | <i>Scotophilus dinganii</i> | Genetic, Museum voucher | Gauteng | .25.385033, 28.317483 | Kwalata Game Ranch |
| UP 11507, TM48399 | 2011 Jan 15 | <i>Neoromicia (Laephotis) capensis</i> | Genetic, Museum voucher | Gauteng | -25.38985, 28.316483 | Kwalata Game Ranch |
| UP 11508, TM48422 | 2011 Apr 15 | <i>Neoromicia (Laephotis) capensis</i> | Genetic, Museum voucher | Gauteng | -25.391733, 28.323133 | Kwalata Game Ranch |
| UP 11509, TM48401 | 2011 Jan 16 | <i>Neoromicia (Laephotis) capensis</i> | Genetic, Museum voucher | Gauteng | -25.387783, 28.322767 | Kwalata Game Ranch |
| UP 11510, TM48433 | 2011 May 20 | <i>Neoromicia (Laephotis) capensis</i> | Genetic, Museum voucher | Gauteng | -25.379083, 28.317467 | Kwalata Game Ranch |
| UP 11511, TM48409 | 2011 Feb 23 | <i>Neoromicia (Laephotis) capensis</i> | Genetic, Museum voucher | Gauteng | -25.41567, 28.312167 | Kwalata Game Ranch |
| UP 11512, TM48421 | 2011 Mar 27 | <i>Neoromicia (Laephotis) capensis</i> | Museum voucher | Gauteng | -25.389917, 28.322633 | Kwalata Game Ranch |
| UP 11513, TM48408 | 2011 Jan 29 | <i>Neoromicia (Laephotis) capensis</i> | Genetic, Museum voucher | Gauteng | -25.379833, 28.321717 | Kwalata Game Ranch |
| UP 11514, TM48398 | 2011 Jan 14 | <i>Neoromicia (Laephotis) capensis</i> | Genetic, Museum voucher | Gauteng | -25.4026, 28.337683 | Kwalata Game Ranch |
| UP 11515, TM48391 | 2011 Jan 08 | <i>Neoromicia (Laephotis) capensis</i> | Genetic, Museum voucher | Gauteng | -25.385033, 28.317483 | Kwalata Game Ranch |
| UP 11516, TM48392 | 2011 Jan 08 | <i>Pipistrellus rusticus</i> | Museum voucher | Gauteng | -25.385033, 28.317483 | Kwalata Game Ranch |

| Laboratory no.* | Collection date | Bat species† | ID method | Province | Coordinates | Site |
|----------------------|-----------------|--|-------------------------------|----------|--------------------------|--------------------|
| UP 11517, TM48393 | 2011 Jan 08 | <i>Neoromicia (Laephotis) capensis</i> | Genetic, Museum voucher | Gauteng | -25.385033, 28.317483 | Kwalata Game Ranch |
| UP 11518, TM48371 | 2011 Jan 04 | <i>Neoromicia (Laephotis) capensis</i> | Genetic, Museum voucher | Gauteng | -25.382567, 28.3172 | Kwalata Game Ranch |
| UP 11519, TM48372 | 2011 Jan 04 | <i>Pipistrellus rusticus</i> | Museum voucher | Gauteng | -25.382567, 28.3172 | Kwalata Game Ranch |
| UP 11520, TM48361 | 2010 Dec 15 | <i>Laephotis botswanae</i> | Genetic, Museum voucher | Gauteng | -25.385133, 28.319967 | Kwalata Game Ranch |
| UP 11521, TM48402 | 2011 Jan 16 | <i>Neoromicia (Laephotis) capensis</i> | Genetic, Museum voucher | Gauteng | -25.387783, 28.322767 | Kwalata Game Ranch |
| UP 11522, TM48362 | 2010 Dec 15 | <i>Neoromicia (Laephotis) capensis</i> | Genetic, Museum voucher | Gauteng | -25.385133, 28.319967 | Kwalata Game Ranch |
| UP 11523, TM48357 | 2010 Nov 30 | <i>Neoromicia (Laephotis) capensis</i> | Genetic, Museum voucher | Gauteng | -25.398, 28.312017 | Kwalata Game Ranch |
| UP 11524, TM48363 | 2010 Dec 15 | <i>Pipistrellus rusticus</i> | Museum voucher | Gauteng | -25.385133, 28.319967 | Kwalata Game Ranch |
| UP 11525, TM48364 | 2010 Dec 15 | <i>Pipistrellus rusticus</i> | Museum voucher | Gauteng | -25.38533, 28.319967 | Kwalata Game Ranch |
| UP 11526, TM48359 | 2010 Dec 02 | <i>Neoromicia (Laephotis) capensis</i> | Genetic, Museum voucher | Gauteng | -25.381767, 28.3159 | Kwalata Game Ranch |
| UP 11527, TM48365 | 2010 Dec 15 | <i>Neoromicia (Laephotis) capensis</i> | Genetic, Museum voucher | Gauteng | -25.385133, 28.319967 | Kwalata Game Ranch |
| UP 11528, TM48367 | 2011 Jan 04 | <i>Neoromicia (Laephotis) capensis</i> | Genetic, Museum voucher | Gauteng | -25.382567, 28.3172 | Kwalata Game Ranch |
| UP 11529, TM48368 | 2011 Jan 04 | <i>Scotophilus dinganii</i> | Genetic, Museum voucher | Gauteng | -25.382567, 28.3172 | Kwalata Game Ranch |
| UP 11530, TM48369 | 2011 Jan 04 | <i>Pipistrellus rusticus</i> | Museum voucher | Gauteng | -25.382567, 28.3172 | Kwalata Game Ranch |
| UP 11531, TM48403 | 2011 Jan 18 | <i>Pipistrellus rusticus</i> | Museum voucher | Gauteng | -25.389917, 28.322633 | Kwalata Game Ranch |
| UP 11532, TM48404 | 2011 Jan 18 | <i>Pipistrellus hesperidus</i> | Museum voucher | Gauteng | -25.382567, 28.3172 | Kwalata Game Ranch |
| UP 11533, TM48389 | 2011 Jan 08 | <i>Pipistrellus rusticus</i> | Museum voucher | Gauteng | -25.385033, 28.317483 | Kwalata Game Ranch |
| UP 11534, TM48390 | 2011 Jan 08 | <i>Pipistrellus rusticus</i> | Museum voucher | Gauteng | -25.382567, 28.3172 | Kwalata Game Ranch |
| UP 11535, TM48406 | 2011 Jan 22 | <i>Neoromicia (Laephotis) capensis</i> | Genetic, Museum voucher | Gauteng | -25.39295, 28.3321 | Kwalata Game Ranch |
| UP 11536, TM48396 | 2011 Jan 14 | <i>Pipistrellus rusticus</i> | Museum voucher | Gauteng | -25.4026, 28.337683 | Kwalata Game Ranch |
| UP 11537, TM48407 | 2011 Jan 22 | <i>Neoromicia (Laephotis) capensis</i> | Genetic, Museum voucher | Gauteng | -25.39295, 28.3321 | Kwalata Game Ranch |
| UP 11538, TM48397 | 2011 Jan 14 | <i>Pipistrellus rusticus</i> | Museum voucher | Gauteng | -25.4026, 28.337683 | Kwalata Game Ranch |
| UP 11539, TM48410 | 2011 Feb 23 | <i>Pipistrellus rusticus</i> | Museum voucher | Gauteng | -25.415667, 28.312167 | Kwalata Game Ranch |
| UP 11540, TM48411 | 2011 Feb 23 | <i>Pipistrellus rusticus</i> | Museum voucher | Gauteng | -25.415667, 28.312167 | Kwalata Game Ranch |
| UP 11541, TM48413 | 2011 Feb 23 | <i>Pipistrellus rusticus</i> | Museum voucher | Gauteng | -25.415667, 28.312167 | Kwalata Game Ranch |
| UP 11542, TM48425 | 2011 Apr 19 | <i>Tadarida aegyptiaca</i> | Genetic, Museum voucher | Gauteng | -25.415667, 28.312167 | Kwalata Game Ranch |
| UP 11543, TM48426 | 2011 Apr 19 | <i>Tadarida aegyptiaca</i> | Genetic, Museum voucher | Gauteng | -25.415667, 28.312167 | Kwalata Game Ranch |

| Laboratory no.* | Collection date | Bat species† | ID method | Province | Coordinates | Site |
|----------------------|-----------------|--|-------------------------------|----------|--------------------------|--------------------|
| UP 11544, TM48426 | 2011 Apr 19 | <i>Tadarida aegyptiaca</i> | Genetic, Museum voucher | Gauteng | -25.415667, 28.312167 | Kwalata Game Ranch |
| UP 11545, TM48426 | 2010 Dec 02 | <i>Pipistrellus rusticus</i> | Museum voucher | Gauteng | -25.415667, 28.312167 | Kwalata Game Ranch |
| UP 11546, TM48360 | 2010 Dec 15 | <i>Pipistrellus rusticus</i> | Museum voucher | Gauteng | -25.415667, 28.312167 | Kwalata Game Ranch |
| UP 11547, TM48366 | 2011 Jan 04 | <i>Pipistrellus rusticus</i> | Museum voucher | Gauteng | -25.415667, 28.312167 | Kwalata Game Ranch |
| UP 11548, TM48370 | 2011 Jan 04 | <i>Pipistrellus rusticus</i> | Museum voucher | Gauteng | -25.415667, 28.312167 | Kwalata Game Ranch |
| UP 11549, TM48424 | 2011 Apr 19 | <i>Tadarida aegyptiaca</i> | Genetic, Museum voucher | Gauteng | -25.415667, 28.312167 | Kwalata Game Ranch |
| UP 11550, TM48434 | 2011 May 20 | <i>Neoromicia (Laephotis) capensis</i> | Genetic, Museum voucher | Gauteng | -25.415667, 28.312167 | Kwalata Game Ranch |
| UP 12814, TM48435 | 2011 May 29 | <i>Scotophilus dinganii</i> | Genetic, Museum voucher | Gauteng | -25.172, 28.366267 | Kwalata Game Ranch |
| UP 12815, TM48381 | 2011 Jan 07 | <i>Nycteris thebaica</i> | Genetic, Museum voucher | Gauteng | -25.38095, 28.345017 | Tamboti Lodge |
| UP 12816, TM48382 | 2011 Jan 07 | <i>Nycteris thebaica</i> | Genetic, Museum voucher | Gauteng | -25.38095, 28.345017 | Tamboti Lodge |
| UP 12817, TM48417 | 2011 Mar 02 | <i>Neoromicia (Laephotis) capensis</i> | Genetic, Museum voucher | Gauteng | -25.392950, 28.3321 | Kwalata Game Ranch |
| UP 12818, TM48400 | 2011 Jan 15 | <i>Neoromicia (Laephotis) capensis</i> | Genetic, Museum voucher | Gauteng | -25.389850, 28.316483 | Kwalata Game Ranch |
| UP 12819, TM48385 | 2011 Jan 07 | <i>Nycteris thebaica</i> | Genetic, Museum voucher | Gauteng | -25.38095, 28.345017 | Tamboti Lodge |
| UP 12820, TM48386 | 2011 Jan 07 | <i>Nycteris thebaica</i> | Genetic, Museum voucher | Gauteng | -25.38095, 28.345017 | Tamboti Lodge |
| UP 12821, TM48418 | 2011 Mar 02 | <i>Neoromicia capensis</i> | Genetic, Museum voucher | Gauteng | -25.392950, 28.3321 | Kwalata Game Ranch |
| UP 12822, TM48430 | 2011 Apr 19 | <i>Neoromicia (Laephotis) capensis</i> | Genetic, Museum voucher | Gauteng | -25.382533, 28.3167 | Kwalata Game Ranch |
| UP 12823, TM48412 | 2011 Feb 23 | <i>Pipistrellus rusticus</i> | Museum voucher | Gauteng | -25.415667, 28.312167 | Kwalata Game Ranch |
| UP 12824, TM48395 | 2011 Jan 14 | <i>Neoromicia (Laephotis) capensis</i> | Genetic, Museum voucher | Gauteng | -25.402600, 28.337683 | Kwalata Game Ranch |
| UP 12825, TM48405 | 2011 Jan 18 | <i>Neoromicia (Laephotis) capensis</i> | Genetic, Museum voucher | Gauteng | -25.389917, 28.322633 | Kwalata Game Ranch |
| UP 12826, TM48374 | 2011 Jan 07 | <i>Nycteris thebaica</i> | Genetic, Museum voucher | Gauteng | -25.38095, 28.345017 | Tamboti Lodge |
| UP 12827, TM48419 | 2011 Mar 13 | <i>Neoromicia (Laephotis) capensis</i> | Genetic, Museum voucher | Gauteng | -25.402650, 28.3377 | Kwalata Game Ranch |
| UP 12828, TM48436 | 2011 Jan 21 | <i>Pipistrellus rusticus</i> | Museum voucher | Gauteng | -25.399933, 28.352517 | Kwalata Game Ranch |
| UP 12829, TM48420 | 2011 Mar 26 | <i>Pipistrellus rusticus</i> | Museum voucher | Gauteng | -25.399933, 28.352517 | Kwalata Game Ranch |
| UP 12830, TM48380 | 2011 Jan 07 | <i>Nycteris thebaica</i> | Genetic, Museum voucher | Gauteng | -25.38095, 28.345017 | Tamboti Lodge |
| UP 12831, TM48423 | 2011 Apr 19 | <i>Tadarida aegyptiaca</i> | Genetic, Museum voucher | Gauteng | -25.417083, 28.31165 | Kwalata Game Ranch |

| Laboratory no.* | Collection date | Bat species† | ID method | Province | Coordinates | Site |
|-------------------|-----------------|--|-------------------------|----------|-----------------------|--------------------|
| UP 12832, TM48383 | 2011 Jan 07 | <i>Nycteris thebaica</i> | Genetic, Museum voucher | Gauteng | -25.38095, 28.345017 | Tamboti Lodge |
| UP 12833, TM48384 | 2011 Jan 07 | <i>Nycteris thebaica</i> | Genetic, Museum voucher | Gauteng | -25.38095, 28.345017 | Tamboti Lodge |
| UP 12834, TM48375 | 2011 Jan 07 | <i>Nycteris thebaica</i> | Genetic, Museum voucher | Gauteng | -25.38095, 28.345017 | Tamboti Lodge |
| UP 12835, TM48394 | 2011 Jan 08 | <i>Nycteris thebaica</i> | Genetic, Museum voucher | Gauteng | -25.385033, 28.317483 | Kwalata Game Ranch |
| UP 12836, TM48427 | 2011 Apr 19 | <i>Tadarida aegyptiaca</i> | Genetic, Museum voucher | Gauteng | -25.417083, 28.31165 | Kwalata Game Ranch |
| UP 12837, TM48428 | 2011 Apr 19 | <i>Tadarida aegyptiaca</i> | Genetic, Museum voucher | Gauteng | -25.417083, 28.31165 | Kwalata Game Ranch |
| UP 12838, TM48431 | 2011 Apr 19 | <i>Neoromicia capensis</i> | Genetic, Museum voucher | Gauteng | -25.382533, 28.3167 | Kwalata Game Ranch |
| UP 12839, TM48376 | 2011 Jan 07 | <i>Nycteris thebaica</i> | Genetic, Museum voucher | Gauteng | -25.38095, 28.345017 | Tamboti Lodge |
| UP 12840, TM48377 | 2011 Jan 07 | <i>Nycteris thebaica</i> | Genetic, Museum voucher | Gauteng | -25.38095, 28.345017 | Tamboti Lodge |
| UP 12841, TM48378 | 2011 Jan 07 | <i>Nycteris thebaica</i> | Genetic, Museum voucher | Gauteng | -25.38095, 28.345017 | Tamboti Lodge |
| UP 12842, TM48414 | 2011 Feb 23 | <i>Neoromicia (Laephotis) capensis</i> | Genetic, Museum voucher | Gauteng | -25.415667, 28.312167 | Kwalata Game Ranch |
| UP 12843, TM48379 | 2011 Jan 07 | <i>Nycteris thebaica</i> | Genetic, Museum voucher | Gauteng | -25.38095, 28.345017 | Tamboti Lodge |

*Catalog nos. of voucher specimens are provided after the UP no. DM, Durban Natural Science Museum; NHCPHE MAM, Natural History Collection for Public Health and Economics; TM, Ditsong National Museum of Natural History; UP, University of Pretoria.

†Updated taxonomic names are indicated in parentheses.

Appendix Table 2. Bat species sampled for lyssavirus, South Africa, 2003–2018

| Bat species* | Province, no. bats collected | | | | | | Total, no. |
|---|------------------------------|------------|---------------|------------|------------|------------|------------|
| | Eastern Cape | Gauteng | KwaZulu-Natal | Limpopo | Mpumalanga | North West | |
| <i>Chaerephon (Mops) ansorgei</i> | 0 | 0 | 0 | 2 | 0 | 0 | 2 |
| <i>Chaerephon (Mops) pumilus</i> | 0 | 0 | 15 | 3 | 0 | 0 | 18 |
| <i>Cloeotis percivali</i> | 0 | 0 | 0 | 5 | 0 | 0 | 5 |
| <i>Eptesicus hottentotus</i> | 0 | 0 | 0 | 0 | 0 | 1 | 1 |
| <i>Glauconycteris variegata</i> | 0 | 0 | 3 | 1 | 0 | 0 | 4 |
| <i>Hipposideros caffer</i> | 0 | 0 | 0 | 16 | 1 | 0 | 17 |
| <i>Kerivoula (Glauconycteris) argentata</i> | 0 | 0 | 1 | 0 | 0 | 0 | 1 |
| <i>Laephotis botswanae</i> | 0 | 1 | 1 | 0 | 0 | 0 | 2 |
| <i>Miniopterus fraterculus</i> | 0 | 1 | 0 | 2 | 0 | 2 | 5 |
| <i>Miniopterus natalensis</i> | 0 | 30 | 8 | 80 | 0 | 6 | 124 |
| <i>Mops condylurus</i> | 0 | 1 | 0 | 8 | 0 | 0 | 9 |
| <i>Mops midas</i> | 0 | 0 | 0 | 3 | 0 | 0 | 3 |
| <i>Myotis tricolor</i> | 0 | 0 | 0 | 9 | 2 | 0 | 11 |
| <i>Myotis welwitschii</i> | 0 | 0 | 0 | 0 | 1 | 0 | 1 |
| <i>Neoromicia (Laephotis) capensis</i> | 0 | 42 | 3 | 7 | 4 | 11 | 67 |
| <i>Neoromicia (Laephotis) cf. helios</i> | 0 | 0 | 0 | 4 | 0 | 0 | 4 |
| <i>Neoromicia (Laephotis) helios</i> | 0 | 0 | 0 | 2 | 0 | 0 | 2 |
| <i>Neoromicia (Laephotis) nana</i> | 0 | 0 | 2 | 8 | 3 | 0 | 13 |
| <i>Neoromicia (Laephotis) rendalli</i> | 0 | 0 | 0 | 1 | 0 | 0 | 1 |
| <i>Neoromicia (Laephotis) zuluensis</i> | 0 | 0 | 0 | 2 | 1 | 0 | 3 |
| <i>Nycteris thebaica</i> | 0 | 14 | 9 | 18 | 0 | 1 | 42 |
| <i>Nycticeinops schlieffeni</i> | 0 | 0 | 0 | 8 | 0 | 0 | 8 |
| <i>Otomops martiensseni</i> | 0 | 0 | 7 | 0 | 0 | 0 | 7 |
| <i>Pipistrellus hesperidus</i> | 7 | 1 | 9 | 2 | 1 | 0 | 20 |
| <i>Pipistrellus rusticus</i> | 0 | 23 | 0 | 8 | 1 | 3 | 35 |
| <i>Rhinolophus blasii</i> | 0 | 0 | 0 | 12 | 0 | 0 | 12 |
| <i>Rhinolophus clivosus</i> | 0 | 2 | 10 | 17 | 1 | 0 | 30 |
| <i>Rhinolophus damarensis</i> | 0 | 0 | 0 | 0 | 0 | 5 | 5 |
| <i>Rhinolophus darlingi</i> | 0 | 0 | 1 | 4 | 0 | 0 | 5 |
| <i>Rhinolophus denti</i> | 0 | 0 | 0 | 0 | 0 | 5 | 5 |
| <i>Rhinolophus hildebrandtii</i> s.l. | 0 | 0 | 0 | 1 | 2 | 0 | 3 |
| <i>Rhinolophus landeri</i> | 0 | 0 | 0 | 1 | 0 | 0 | 1 |
| <i>Rhinolophus simulator</i> | 0 | 0 | 0 | 48 | 0 | 2 | 50 |
| <i>Rhinolophus smithersi</i> | 0 | 0 | 0 | 4 | 0 | 0 | 4 |
| <i>Rhinolophus swinnyi</i> | 0 | 0 | 3 | 0 | 0 | 0 | 3 |
| <i>Sauromys petrophilus</i> | 0 | 0 | 0 | 0 | 0 | 1 | 1 |
| <i>Scotophilus dinganii</i> | 0 | 5 | 14 | 18 | 0 | 12 | 49 |
| <i>Scotophilus leucogaster</i> | 0 | 0 | 0 | 5 | 0 | 0 | 5 |
| <i>Scotophilus viridis</i> | 0 | 0 | 0 | 7 | 0 | 0 | 7 |
| <i>Tadarida aegyptiaca</i> | 0 | 10 | 2 | 0 | 0 | 5 | 17 |
| <i>Taphozous mauritianus</i> | 0 | 0 | 0 | 3 | 0 | 0 | 3 |
| Total | 7 | 130 | 88 | 309 | 17 | 54 | 605 |

*Updated taxonomic names are indicated in parentheses

Appendix Table 3. Provincial permits to conduct lyssavirus surveillance among insectivorous bats, South Africa, 2003–2018

| Issuer | Permit no. | Permit title | Date issued |
|---|-----------------|---|-------------|
| Limpopo Provincial Government, Department of Economic Development, Environment and Tourism | A02–005–00003 | Collect mammals for scientific purposes | 2004 Feb 16 |
| | CPM-005–00010 | Collect mammals for scientific purposes | 2007 Mar 30 |
| | RB/2010/22 | Permit to move animals | 2010 Oct 15 |
| | 001-CPM402–0007 | Scientific research on mammals | 2013 Feb 08 |
| | ZA/LP/84188 | Scientific research on mammals | 2017 Aug 29 |
| | ZA/LP/83642 | Scientific research on mammals | 2017 Aug 03 |
| | CPM006806 | Scientific research on mammals | 2012 May 03 |
| | ZA/LP/73972 | Scientific research on mammals | 2016 Feb 05 |
| | ZA/LP/91509 | Scientific research on mammals | 2018 Sep 06 |
| Gauteng Provincial Government, Department of Agriculture, Conservation, Environment | CPF6 No. 0027 | Collect and convey wild animals for scientific purposes | 2010 Apr 29 |
| | CPF6 No. 0109 | Collect and convey wild animals for scientific purposes | 2014 Mar 04 |
| | CPB6 No. 003767 | Import into province wild animals | 2012 Nov 24 |
| | CPF6 No. 0123 | Collect and convey wild animals for scientific purposes | 2016 Apr 06 |
| KwaZulu-Natal Wildlife Permits Office | OP 2098/2015 | Mammal capture and export | 2015 May 18 |
| North-West Province, Department of Agriculture, Conservation Environment and Tourism | 000039 NW-07 | Collection of bats for scientific purposes | 2007 Feb 19 |
| Mpumalanga Tourism and Parks Agency | MPB5177 | Catch/collect and convey mammals for scientific purposes | 2007 Jan 05 |
| | MPB5385 | Catch/collect and convey mammals for scientific purposes | 2014 Feb 10 |

Appendix Table 4. Selected sequences of lyssaviruses used for phylogenetic analysis*

| Genbank accession no. | Virus | Host | Year | Country |
|--------------------------|---------------------------|---------------------------------|------|--------------------------|
| EU293108 | Lagos bat virus | <i>Eidolon helvum</i> | 1985 | Senegal |
| EU293110 | Lagos bat virus | <i>Eidolon helvum</i> | 1956 | Nigeria |
| GU170202 | Lagos bat virus | <i>Rousettus aegyptiacus</i> | 2008 | Kenya |
| DQ499944 | Lagos bat virus | <i>Epomophorus wahlbergi</i> | 2003 | South Africa |
| DQ499945 | Lagos bat virus | <i>Epomophorus wahlbergi</i> | 2004 | South Africa |
| DQ499946 | Lagos bat virus | <i>Epomophorus wahlbergi</i> | 1980 | South Africa |
| DQ499947 | Lagos bat virus | <i>Epomophorus wahlbergi</i> | 1982 | South Africa |
| EF547447 | Lagos bat virus | <i>Rousettus aegyptiacus</i> | 1999 | France (imported) |
| EF547449 | Lagos bat virus | <i>Micropteropus pusillus</i> | 1974 | Central African Republic |
| EF547450 | Lagos bat virus | <i>Felis catus</i> | 1986 | Zimbabwe |
| EF547452 | Lagos bat virus | <i>Epomophorus wahlbergi</i> | 2006 | South Africa |
| EU259198 | Lagos bat virus | <i>Eidolon helvum</i> | 2007 | Kenya |
| HM179509 | Lagos bat virus | <i>Epomophorus wahlbergi</i> | 2008 | South Africa |
| JX901139 | Lagos bat virus | <i>Rousettus aegyptiacus</i> | 2010 | Kenya |
| LN849915 | Lagos bat virus | <i>Eidolon helvum</i> | 2013 | Ghana |
| AF418014 | Australian bat lyssavirus | <i>Homo sapiens</i> | 1998 | Australia |
| KT868956 | Australian bat lyssavirus | <i>Pteropus scapulatus</i> | 2014 | Australia |
| NC003243 | Australian bat lyssavirus | <i>Saccolaimus flaviventris</i> | 1996 | Australia |
| KT868955 | Australian bat lyssavirus | <i>Pteropus alecto</i> | 2014 | Australia |
| AY573937 | Australian bat lyssavirus | <i>Saccolaimus flaviventris</i> | 1997 | Australia |
| AY573963 | Australian bat lyssavirus | <i>Pteropus alecto</i> | 1998 | Australia |
| AY573964 | Australian bat lyssavirus | <i>Pteropus alecto</i> | 1997 | Australia |
| AY573965 | Australian bat lyssavirus | <i>Saccolaimus flaviventris</i> | 1997 | Australia |
| KF155004 | European bat lyssavirus 2 | <i>Myotis daubentonii</i> | 2004 | United Kingdom |
| KY688152 | European bat lyssavirus 2 | <i>Myotis dasycneme</i> | 1993 | Netherlands |
| NC009528 | European bat lyssavirus 2 | <i>Homo sapiens</i> | 2002 | United Kingdom |
| EU293114 | European bat lyssavirus 2 | <i>Myotis dasycneme</i> | 1986 | Netherlands |
| AY863364 | European bat lyssavirus 1 | <i>Pteropus alecto</i> | 2000 | Netherlands |

| Genbank accession no. | Virus | Host | Year | Country |
|-----------------------|---------------------------|---------------------------------|------|-----------------------------------|
| AY863382 | European bat lyssavirus 1 | <i>Eptesicus serotinus</i> | 2001 | Slovakia |
| AY863397 | European bat lyssavirus 1 | <i>Eptesicus serotinus</i> | 2000 | France |
| AY863405 | European bat lyssavirus 2 | <i>Myotis dasycneme</i> | 1989 | Netherlands |
| AY863407 | European bat lyssavirus 2 | <i>Myotis daubentonii</i> | 1993 | Switzerland |
| AY863408 | European bat lyssavirus 2 | NA | 2002 | Switzerland |
| EU293119 | Duvenhage virus | <i>Homo sapiens</i> | 1971 | South Africa |
| EU293120 | Duvenhage virus | <i>Miniopterus sp</i> | 1981 | South Africa |
| JN986749 | Duvenhage virus | <i>Homo sapiens</i> | 2007 | Netherlands (imported from Kenya) |
| EU623444 | Duvenhage virus | <i>Homo sapiens</i> | 2006 | South Africa |
| EU626552 | European bat lyssavirus 1 | <i>Felis catus</i> | 2007 | France |
| KP241939 | European bat lyssavirus 1 | <i>Eptesicus isabellinus</i> | 2007 | Spain |
| NC009527 | European bat lyssavirus 1 | <i>Eptesicus serotinus</i> | 1968 | Germany |
| KF155003 | European bat lyssavirus 1 | <i>Eptesicus serotinus</i> | 1986 | Denmark |
| EF157976 | European bat lyssavirus 1 | <i>Eptesicus serotinus</i> | 1968 | Germany |
| KF977826 | Rabies virus | <i>Homo sapiens</i> | 2011 | Central African Republic |
| KM594028 | Rabies virus | <i>Eptesicus furinalis</i> | 2010 | Brazil |
| KP723638 | Rabies virus | <i>Canis simensis</i> | 2014 | Ethiopia |
| KT336437 | Rabies virus | <i>Canis lupus familiaris</i> | 2012 | South Africa |
| AF351847 | Rabies virus | <i>Desmodus rotundus</i> | 1986 | Brazil |
| AF351850 | Rabies virus | Insectivorous bat | 1988 | Chile |
| AF374721 | Rabies virus | <i>Canis familiaris</i> | NA | India |
| AY352493 | Rabies virus | <i>Homo sapiens</i> | NA | India |
| GU358653 | Rabies virus | <i>Canis familiaris</i> | 1994 | China |
| HQ450386 | Rabies virus | <i>Canis familiaris</i> | NA | Mexico |
| MF043188 | Bokeloh bat lyssavirus | <i>Myotis nattereri</i> | 2013 | France |
| KC169985 | Bokeloh bat lyssavirus | <i>Myotis nattereri</i> | 2012 | France |
| MF197740 | Bokeloh bat lyssavirus | <i>Myotis nattereri</i> | 2016 | Poland |
| MF472709 | Taiwan bat lyssavirus | <i>Pipistrellus abramus</i> | 2017 | Taiwan |
| MF472710 | Taiwan bat lyssavirus | <i>Pipistrellus abramus</i> | 2016 | Taiwan |
| NC018629 | Ikoma lyssavirus | <i>Civettictis civetta</i> | 2009 | Tanzania |
| NC020808 | Aravan virus | <i>Myotis blythi</i> | 1991 | Kyrgyzstan |
| NC020809 | Irkut virus | <i>Murina leucogaster</i> | 2002 | Russia |
| NC025365 | Shimoni bat virus | <i>Macronycteris vittatus</i> | 2009 | Kenya |
| NC025377 | West Caucasian bat virus | <i>Miniopterus schreibersii</i> | 2002 | Russia |
| NC025385 | Khujand virus | <i>Myotis mystacinus</i> | 2001 | Tajikistan |
| NC031955 | Lleida bat lyssavirus | <i>Miniopterus schreibersii</i> | 2011 | Spain |
| NC031988 | Gannoruwa bat lyssavirus | <i>Pteropus giganteus</i> | 2015 | Sri Lanka |
| KC866301 | Duvenhage virus | <i>Nycteris thebaica</i> | 2012 | South Africa |
| MT364249 | Matlo bat lyssavirus | <i>Miniopterus natalensis</i> | 2015 | South Africa |
| MT364250 | Matlo bat lyssavirus | <i>Miniopterus natalensis</i> | 2016 | South Africa |
| KF155005 | Mokola virus | <i>Crocidura sp.</i> | 1968 | Nigeria |
| EU293117 | Mokola virus | <i>Crocidura sp.</i> | 1974 | Cameroon |
| KF155006 | Mokola virus | <i>Felis catus</i> | 1982 | Zimbabwe |
| KF155007 | Mokola virus | <i>Felis catus</i> | 1993 | Zimbabwe |
| KF155008 | Mokola virus | <i>Felis catus</i> | 1996 | South Africa |
| EU293118 | Mokola virus | <i>Laphuromys sikapusi</i> | 1981 | Central African Republic |
| FJ465410 | Mokola virus | <i>Felis catus</i> | 1998 | South Africa |
| FJ465412 | Mokola virus | <i>Felis catus</i> | 2006 | South Africa |
| FJ465413 | Mokola virus | <i>Felis catus</i> | 1997 | South Africa |
| FJ465414 | Mokola virus | <i>Felis catus</i> | 1996 | South Africa |
| FJ465415 | Mokola virus | <i>Felis catus</i> | 1995 | South Africa |
| FJ465417 | Mokola virus | <i>Felis catus</i> | 1981 | Zimbabwe |
| FJ465418 | Mokola virus | <i>Felis catus</i> | 1981 | Zimbabwe |
| JN944637 | Mokola virus | <i>Felis catus</i> | 1997 | South Africa |
| KC218932 | Mokola virus | <i>Felis catus</i> | 1981 | Zimbabwe |
| KC218934 | Mokola virus | <i>Felis catus</i> | 2008 | South Africa |
| KP899610 | Mokola virus | <i>Felis catus</i> | 2012 | South Africa |
| KP899611 | Mokola virus | <i>Felis catus</i> | 2012 | South Africa |
| KP899612 | Mokola virus | <i>Felis catus</i> | 2014 | South Africa |
| MF960865 | Kotalahti bat lyssavirus | <i>Myotis brandtii</i> | 2017 | Finland |

*NA, not available.