

demarcated boundary of erythema with a tiny scab (Figure, panel D).

A new species of *Rickettsia* was detected from leeches in Japan (5,6). Furthermore, certain leech species, parasitizing frogs or fish, can complete the vertical transmission of *Rickettsia* spp. with possible horizontal transmission (6). The leech is reported to be a potential vector for human rickettsial infections (7,8). Slesak et al. described the case of a 39-year-old woman with *R. felis* infection confirmed by eschar PCR after a leech bite in northern Laos (7). Balcells et al. reported the case of a 54-year-old man with scrub typhus-like illness after a leech bite in southern Chile (8). In our previous study (4), 13% (4/31) of patients with Japanese spotted fever and 2% (4/188) of patients with scrub typhus diagnosed by serologic tests had a history of land leech bite before the symptom onset.

Our report is limited because we did not have the land leech for testing by PCR. The patient might have had rickettsia on his skin and then been inoculated by the leech bite or by scratching after the bite (7). Further investigations, including an experimental model, are needed to support the potential role of leeches in the transmission of *R. japonica* and other *Rickettsia* spp.

### Acknowledgments

We thank the patient, who provided written consent for publishing this case report and the accompanying images; Satoshi Kobayashi for the patient's care and his assistance in collecting samples; and Shuji Ando for critical comments.

This study was supported by the Japan Agency for Medical Research and Development under grant no. JP18fk0108068.

### About the Author

Dr. Sando is a general physician at the Kameda Medical Center, Kamogawa, Japan, and an assistant professor at the Institute of Tropical Medicine, Nagasaki University, Nagasaki, Japan. His primary research interest is rickettsial diseases.

### References

1. National Institute of Infectious Disease–Japan. Scrub typhus and Japanese spotted fever in Japan 2007–2016. Infectious Agent Surveillance Report. Tokyo: The Institute; 2017.
2. Chung M-H, Lee S-H, Kim M-J, Lee J-H, Kim E-S, Lee J-S, et al. Japanese spotted fever, South Korea. *Emerg Infect Dis*. 2006;12:1122–4. <http://dx.doi.org/10.3201/eid1207.051372>
3. Lu Q, Yu J, Yu L, Zhang Y, Chen Y, Lin M, et al. *Rickettsia japonica* infections in humans, Zhejiang Province, China, 2015. *Emerg Infect Dis*. 2018;24:2077–9. <http://dx.doi.org/10.3201/eid2411.170044>
4. Sando E, Suzuki M, Katoh S, Fujita H, Taira M, Yaegashi M, et al. Distinguishing Japanese spotted fever and scrub typhus, Central Japan, 2004–2015. *Emerg Infect Dis*. 2018;24:1633–41. <http://dx.doi.org/10.3201/eid2409.171436>

5. Kikuchi Y, Sameshima S, Kitade O, Kojima J, Fukatsu T. Novel clade of *Rickettsia* spp. from leeches. *Appl Environ Microbiol*. 2002;68:999–1004. <http://dx.doi.org/10.1128/AEM.68.2.999-1004.2002>
6. Kikuchi Y, Fukatsu T. *Rickettsia* infection in natural leech populations. *Microb Ecol*. 2005;49:265–71. <http://dx.doi.org/10.1007/s00248-004-0140-5>
7. Slesak G, Inthalath S, Dittrich S, Paris DH, Newton PN. Leeches as further potential vectors for rickettsial infections. *Proc Natl Acad Sci U S A*. 2015;112:E6593–4. <http://dx.doi.org/10.1073/pnas.1515229112>
8. Balcells ME, Rabagliati R, García P, Poggi H, Oddó D, Concha M, et al. Endemic scrub typhus-like illness, Chile. *Emerg Infect Dis*. 2011;17:1659–63. <http://dx.doi.org/10.3201/eid1709.100960>

Address for correspondence: Eiichiro Sando, Department of Clinical Medicine, Institute of Tropical Medicine, Nagasaki University, Nagasaki, Japan; email: eiichiro-ymn@umin.ac.jp

## Schistosome Interactions within the *Schistosoma haematobium* Group, Malawi

**Bonnie L. Webster, Mohammad H. Alharbi, Sekeleghe Kayuni, Peter Makaula, Fenella Halstead, Rosie Christiansen, Lazarus Juziwele, Michelle C. Stanton, E. James LaCourse, David Rollinson, Khumbo Kalua, J. Russell Stothard**

Author affiliations: Natural History Museum, London, UK (B.L. Webster, D. Rollinson); Ministry of Health, Qassim, Saudi Arabia (M.H. Alharbi); Liverpool School of Tropical Medicine, Liverpool, UK (M.H. Alharbi, S. Kayuni, F. Halstead, R. Christiansen, E.J. LaCourse, J.R. Stothard); Medical Aid Society of Malawi, Blantyre, Malawi (S. Kayuni); Research for Health Environment and Development, Mangochi, Malawi (P. Makaula); Ministry of Health, Lilongwe, Malawi (L. Juziwele); Lancaster University Medical School, Lancaster, UK (M.C. Stanton); Lions Sight First Eye Hospital, Blantyre (K. Kalua)

DOI: <https://doi.org/10.3201/eid2506.190020>

Molecular analysis of atypical schistosome eggs retrieved from children in Malawi revealed genetic interactions occurring between human (*Schistosoma haematobium*) and livestock (*S. mattheei* and *S. bovis*) schistosome species. Detection of hybrid schistosomes adds a notable new perspective to the epidemiology and control of urogenital schistosomiasis in central Africa.

Urogenital schistosomiasis is a waterborne disease transmitted by certain freshwater snails that occurs throughout much of sub-Saharan Africa. Until recently, this disease was attributed solely to *Schistosoma haematobium*, which was considered to have limited zoonotic potential (1). However, genetic analysis of natural infections with noninvasive larval sampling (2) has provided new evidence. In West Africa, for example, species interactions with hybrid combinations of *S. haematobium* and the bovine or ovine species of *S. bovis* and *S. curassoni* are commonly encountered in humans and snails (3). Although key biologic features of hybrids may not always be apparent, the risk for zoonotic transmission along with enhanced definitive and intermediate host compatibilities needs investigation (2,3). The recent emergence and persistent transmission of *S. haematobium*–*bovis* hybrids on the Mediterranean island of Corsica (4) demonstrates the public health impact of such genetic introgression.

Genetic analysis of *S. haematobium* group species in central and southern Africa is a high priority. Atypical egg morphologies suggest a capacity for natural hybridization of *S. haematobium* with the bovine species *S. mattheei*, later confirmed with biochemical markers and experimental infections demonstrating viable progeny (3). During ongoing surveillance of urogenital schistosomiasis in Chikhwawa District, Malawi, we encountered atypical *S. haematobium* eggs in urine samples from several infected children (5). We report the further genetic characterization of atypical eggs collected from epidemiologic surveys of

children within Chikhwawa, Nsanje, and Mangochi Districts (Figure, panel A).

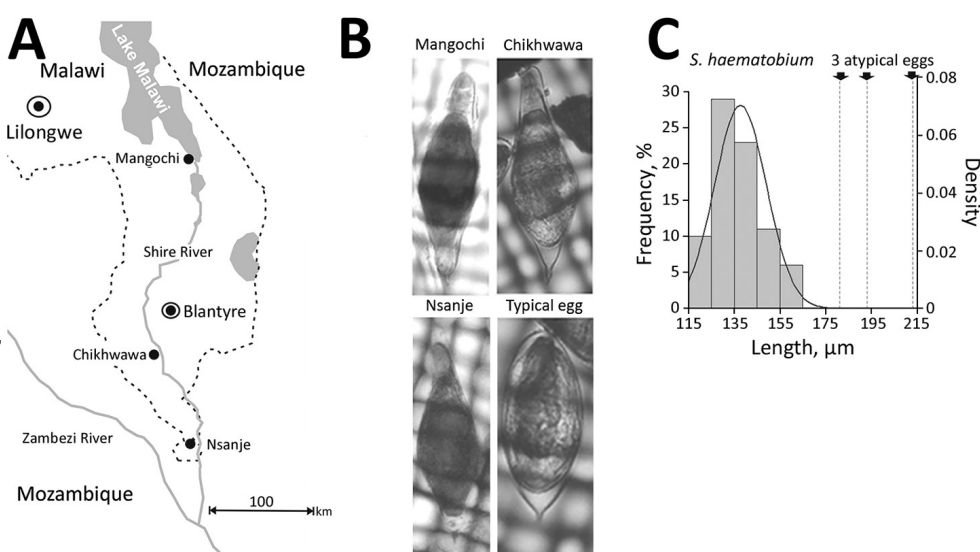
Ethics approvals for the epidemiological surveys were granted by Liverpool School of Tropical Medicine, College of Medicine, Malawi, and Ministry of Health and Population, Malawi. All children found infected were treatment with praziquantel.

We filtered schistosome eggs from the urine of infected children, then photographed and measured them before storing them on Whatman FTA cards for molecular analysis (2). We alkaline-eluted and genotyped DNA from individual eggs using both the mitochondrial cytochrome oxidase subunit 1 (*cox1*) and the nuclear ribosomal internal transcribed spacer (rITS) DNA regions (2) (Appendix Table, <https://wwwnc.cdc.gov/EID/article/25/6/19-0020-App1.pdf>). In addition, for the samples from Mangochi District, we analyzed a partial region (300-bp) of the nuclear ribosomal 18S DNA to confirm the presence of *S. mattheei* nuclear DNA (2,6) (Appendix).

Of 6 atypical eggs from Chikhwawa, all had a pure *S. haematobium* genetic profile (Figure, panels B, C). Of 19 eggs from Nsanje, 18 had a pure *S. haematobium* genetic profile; 4 eggs had atypical morphology, but only 1 atypical egg had a discordant genetic profile (i.e., *cox1* *S. bovis* and rITS *S. haematobium*). Of 20 eggs from Mangochi, 16 typical *S. haematobium* eggs had a pure *S. haematobium* genetic profile, whereas the 4 atypical eggs had the same discordant genetic profiles (*cox1* *S. mattheei* and rITS *S. haematobium*–*mattheei*). Inspection of the partial 18S gene

**Figure.** Investigation of atypical schistosome eggs retrieved from children in Malawi. A) Locations where urine samples containing *Schistosoma haematobium* eggs were collected from children in Mangochi (Samama village, 14°41'74.65"S, 35°21'75.80"E), Chikhwawa (Mpangani village, 16°03'62.99"S, 34°84'10.63"E), and Nsanje (Kastiano village, 16°90'63.98"S, 35°26'65.78"E) districts. Of the children sampled, ≈10% had atypical eggs in their urine, in an approximate atypical:typical ratio of 1:25. Note that the Shire River flows southward from Lake Malawi, linking the 3 sampled locations within the same drainage basin. B) Photomicrographs of a representative atypical egg

from each location. Corresponding genotypes assigned for the mitochondrial *cox1* and nuclear rITS loci: Mangochi, *cox1* *S. mattheei* and rITS *S. haematobium*–*mattheei*; Chikhwawa, *cox1* and rITS *S. haematobium*; Nsanje, *cox1* *S. bovis* and rITS *S. haematobium*. A typical *S. haematobium* egg is shown for comparison. Sizes are not to scale. C) Histogram of length measurements for 83 typical *S. haematobium* eggs collected from Nsanje. Solid line indicates the associated density distribution. The mean length of this sample of typical eggs was 135 ± 28 μm (1 SD), with minimum 86 μm and maximum 180 μm. Arrows with dashed lines at right indicate the length of the 3 atypical eggs, which fall well outside the range of length variation of the 83 typical eggs as measured.



sequence confirmed *S. haematobium*–*mattheei* hybrids (Appendix). We deposited all sequence data into GenBank (accession nos. MK358841–MK358858).

Our genetic analysis demonstrated the presence of *S. haematobium* group hybrids in Malawi as introgressed forms of *S. haematobium*–*mattheei* and *S. haematobium*–*bovis*. Of note, an unusual egg morphology may not always correspond with the ability to detect introgression with the current combination of genetic markers used (6; Appendix). As described by Boon et al., successive backcrossings of hybrid progeny may obscure our ability to detect ancestral introgression, and the development of a wider panel of nuclear genetic markers is needed (6). Nonetheless, detection of these 2 hybrid schistosomes strongly suggests interactions of *S. haematobium* with the unguulate schistosomes *S. mattheei* and *S. bovis*. That *S. bovis* has not been reported in Malawi implies a changing species dynamic with possible zoonotic transmission along the drainage basin of Lake Malawi, adding a new dimension to the epidemiology and control of urogenital schistosomiasis in Malawi (7).

Because we did not attempt miracidial hatching during this study, we cannot confirm that these hybrids or introgressed forms are fully viable in autochthonous natural transmission. However, the process of ancestral introgression with subsequent natural selection may help explain unexpected shifts in local snail–schistosome relationships (e.g., the changing compatibility of *Bulinus nyassanus* snails in Lake Malawi with *S. haematobium* schistosomes) (8). Further studies are needed to better characterize schistosomes involved in human infection, investigate more thoroughly any zoonotic potential, and assess all possible combinations of interspecies introgressions.

Molecular evidence for ancestral hybridization between *S. haematobium* and *S. mansoni* schistosomes was presented recently (9); given autochthonous transmission of intestinal schistosomiasis in Lake Malawi (10), there may be sufficient epidemiologic opportunity for other introgression events to occur with the hybrids we report. We therefore advise heightened concurrent surveillance of urogenital and intestinal schistosomiasis, entailing a One-Health approach with molecular vigilance for interspecies interactions along with phenotypic assessments for any altered host pathogenicity or susceptibility to praziquantel treatment. Detection of the hybrid schistosomes we report adds a new perspective to the epidemiology and control of urogenital schistosomiasis in central Africa.

### Acknowledgments

We are particularly grateful to the local health and education authorities of Malawi, district teachers, and community health workers involved in schistosome surveys in Chikhwawa, Nsanje, and Mangochi. We thank Jahashi Nzalawahe for assistance with measurements and analysis of schistosome egg morphology.

M.H.A. is funded by a PhD scholarship from the Ministry of Health, Kingdom of Saudi Arabia. S.K. received a scholarship from Commonwealth Scholarship Commission and a research fellowship from the African Research Network for Neglected Tropical Diseases (ARNTD).

### About the Author

Dr. Webster is a researcher with the Natural History Museum, London, UK. She has specific expertise in medical helminthology and a longstanding interest in studies of schistosome hybridization in both natural and experimental settings.

### References

1. Rollinson D. A wake-up call for urinary schistosomiasis: reconciling research effort with public health importance. *Parasitology*. 2009;136:1593–610. <http://dx.doi.org/10.1017/S0031182009990552>
2. Huyse T, Webster BL, Geldof S, Stothard JR, Diaw OT, Polman K, et al. Bidirectional introgressive hybridization between a cattle and human schistosome species. *PLoS Pathog*. 2009;5:e1000571. <http://dx.doi.org/10.1371/journal.ppat.1000571>
3. Leger E, Webster JP. Hybridizations within the genus *Schistosoma*: implications for evolution, epidemiology and control. *Parasitology*. 2017;144:65–80. <http://dx.doi.org/10.1017/S0031182016001190>
4. Boissier J, Grech-Angelini S, Webster BL, Allienne JF, Huyse T, Mas-Coma S, et al. Outbreak of urogenital schistosomiasis in Corsica (France): an epidemiological case study. *Lancet Infect Dis*. 2016;16:971–9. [http://dx.doi.org/10.1016/S1473-3099\(16\)00175-4](http://dx.doi.org/10.1016/S1473-3099(16)00175-4)
5. Poole H, Terlouw DJ, Naunje A, Mzembe K, Stanton M, Betson M, et al. Schistosomiasis in pre-school-age children and their mothers in Chikhwawa district, Malawi with notes on characterization of schistosomes and snails. *Parasit Vectors*. 2014;7:153. <http://dx.doi.org/10.1186/1756-3305-7-153>
6. Boon NAM, Fannes W, Rombouts S, Polman K, Volckaert FAM, Huyse T. Detecting hybridization in African schistosome species: does egg morphology complement molecular species identification? *Parasitology*. 2017;144:954–64. <http://dx.doi.org/10.1017/S0031182017000087>
7. Makaula P, Sadalaki JR, Muula AS, Kayuni S, Jemu S, Bloch P. Schistosomiasis in Malawi: a systematic review. *Parasit Vectors*. 2014;7:570. <http://dx.doi.org/10.1186/s13071-014-0570-y>
8. Stauffer JR Jr, Madsen H, Webster B, Black K, Rollinson D, Konings A. *Schistosoma haematobium* in Lake Malaŵi: susceptibility and molecular diversity of the snail hosts *Bulinus globosus* and *B. nyassanus*. *J Helminthol*. 2008;82:377–82. <http://dx.doi.org/10.1017/S0022149X08056290>
9. Le Govic Y, Kincaid-Smith J, Allienne JF, Rey O, de Gentile L, Boissier J. *Schistosoma haematobium*–*Schistosoma mansoni* hybrid parasite in migrant boy, France, 2017. *Emerg Infect Dis*. 2019;25:365–7. <http://dx.doi.org/10.3201/eid2502.172028>
10. Alharbi MH, Condemine C, Christiansen R, LaCourse EJ, Makaula P, Stanton MC, et al. *Biomphalaria pfeifferi* snails and intestinal schistosomiasis in Lake Malawi, Africa, 2017–2018. *Emerg Infect Dis*. 2019;25:613–5. <http://dx.doi.org/10.3201/eid2503.181601>

Address for correspondence: J. Russell Stothard, Liverpool School of Tropical Medicine, Pembroke Pl, Liverpool, Merseyside L3 5QA UK; email: russell.stothard@lstm.ac.uk

# Schistosome Interactions within the *Schistosoma haematobium* Group, Malawi

## Appendix

### DNA Extraction

DNA preparation from FTA stored schistosome eggs and larvae:

1. Add 14  $\mu\text{L}$  of Solution 1 (0.1M NaOH, 0.3mM EDTA, pH13.0) to the punchout 2 mm FTA disc.
2. Incubate at room temperature for 5 min.
3. Add 26  $\mu\text{L}$  of Solution 2 (0.1M Tris-HCl, pH7.0).
4. Pulse vortex 3 times.
5. Incubate at room temperature for 10 min.
6. Pulse vortex 10 times.
7. Use 3  $\mu\text{L}$  of the DNA elution in a 25  $\mu\text{L}$  PCR.

### PCR Analysis and Sequencing

We eluted DNA as described above from the schistosome eggs stored on the FTA cards. In separate PCRs, run on a Perkin Elmer 9600 Thermal Cycler, we amplified the *cox1*, ITS and 18S DNA regions (Appendix Table). We performed a 25  $\mu\text{L}$  PCR reaction for each using illustra™ puReTaq Ready-To-Go PCR Beads (GE Healthcare, Hertfordshire, UK, <https://www.gehealthcare.com>) and 10 pmol of each primer (Appendix Table) and 3  $\mu\text{L}$  of the DNA elution.

We checked all PCR reactions for positive amplification of the correct band size by gel electrophoresis using 0.8% Gelred agarose gels (Biotium, <https://biotium.com>). We purified PCR amplicons and Sanger sequenced them in both directions using a dilution of original PCR primer.

We used Sequencher version 5.1 (Gene Codes Corp., <http://www.genecodes.com>) to visualize and manually edit all sequence data.

We confirmed mitochondrial *cox1* sequence identity using the Basic Local Alignment Search Tool (BLAST) (<https://blast.ncbi.nlm.nih.gov/Blast.cgi>). We analyzed the ITS and 18S sequence identity by visual comparison to personal reference sequences for each species (*S. haematobium*, *S. bovis*, and *S. mattheei*). We visually checked known interspecies SNP regions (Appendix Figure) to identify homogenous or heterogenous ITS and 18S DNA.

We inspected mitochondrial and nuclear genetic profiles to identify hybrids (and any discordance of mitochondrial and nuclear DNA data).

The mean egg length of this sample of 83 typical eggs was  $135 \pm 28\mu\text{m}$  (1 SD), which was very similar to the  $137 \pm 15\mu\text{m}$  (1 SD) reported by Boon et al (*1*). We referred to additional sources on unusual egg morphology (*2–4*).

## References

1. Boon NAM, Fannes W, Rombouts S, Polman K, Volckaert FAM, Huyse T. Detecting hybridization in African schistosome species: does egg morphology complement molecular species identification? *Parasitology*. 2017;144:954–64. [PubMed http://dx.doi.org/10.1017/S0031182017000087](https://pubmed.ncbi.nlm.nih.gov/30031182017000087/)
2. Blackie WK. A helminthological survey of Southern Rhodesia. *Memoir (London School of Hygiene and Tropical Medicine)*, no. 5. 1932, p. 1–91.
3. Pitchford RJ. Differences in the egg morphology and certain biological characteristics of some African and Middle Eastern schistosomes, genus *Schistosoma*, with terminal-spined eggs. *Bull World Health Organ*. 1965;32:105–20. [PubMed](https://pubmed.ncbi.nlm.nih.gov/10520/)
4. Sapp SGH, Yabsley MJ, Bradbury RS. Abnormal helminth egg development, strange morphology, and the identification of intestinal helminth infections. *Emerg Infect Dis*. 2018;24:1407–11. [PubMed http://dx.doi.org/10.3201/eid2408.180560](https://pubmed.ncbi.nlm.nih.gov/3201/eid2408.180560/)

**Appendix Table.** PCR primers used to amplify each DNA region and their associated PCR thermal cycle in study of *Schistosoma haematobium* hybridization, Malawi

| DNA region          | Forward primer (name)              | Reverse primer (name)             | PCR thermal cycle  |
|---------------------|------------------------------------|-----------------------------------|--|
| ITS1+2 rDNA         | TGCTTAAGTTCAGCGGGT (ITS1)          | AACAAGGTTTCCGTAGGTGAA (ITS2)      | 5 min at 95°C:<br>40 cycles of 30 s at 95°C, 30 s at 58°C, 1.30 min at 72°C:<br>10 min at 72°C.    |
| Partial 18S rDNA    | GCGAATGGCTCATTAATCAG (WA)          | TCCGAGAGGGAGCCTGA (300R)          | 5 min at 95°C:<br>40 cycles of 30 s at 95°C, 30 s at 60°C, 1 min at 72°C:<br>10 min at 72°C.       |
| Partial cox1 mt DNA | TAATGCATMGAAAAAACA (cox1Schisto5') | TCTTTRGATCATAAGCG (cox1Schisto3') | 5 min at 95°C:<br>40 cycles of 30 s at 95°C, 30 s at 40°C and 1.30 min at 72°C:<br>10 min at 72°C. |

| Marker                | 18S (300bp) |     |     | ITS (906bp) |    |    |    |    |    |     |     |     |     |     |
|-----------------------|-------------|-----|-----|-------------|----|----|----|----|----|-----|-----|-----|-----|-----|
|                       | 138         | 163 | 210 | 18          | 26 | 50 | 51 | 91 | 92 | 120 | 170 | 225 | 490 | 877 |
| <i>S. haematobium</i> | T           | C   | T   | C           | T  | G  | T  | C  | G  | C   | G   | C   | T   | T   |
| <i>S. boyis</i>       | C           | T   | C   | C           | T  | A  | T  | C  | G  | T   | A   | T   | T   | C   |
| <i>S. mattheei</i>    | C           | T   | T   | T           | A  | A  | C  | T  | A  | T   | A   | T   | A   | T   |

**Appendix Figure.** Comparison of DNA sequences from eggs of 3 *Schistosoma* species, Malawi.