

# Bombali Virus in *Mops condylurus* Bat, Kenya

Kristian M. Forbes,<sup>1</sup> Paul W. Webala,  
Anne J. Jääskeläinen, Samir Abdurahman,  
Joseph Ogola, Moses M. Masika, Ilkka Kivistö,  
Hussein Alburkat, Ilya Plyusnin, Lev Levanov,  
Essi M. Korhonen, Eili Huhtamo,  
Dufton Mwaengo, Teemu Smura, Ali Mirazimi,  
Omu Anzala, Olli Vapalahti, Tarja Sironen

Bombali virus (genus *Ebolavirus*) was identified in organs and excreta of an Angolan free-tailed bat (*Mops condylurus*) in Kenya. Complete genome analysis revealed 98% nucleotide sequence similarity to the prototype virus from Sierra Leone. No Ebola virus-specific RNA or antibodies were detected from febrile humans in the area who reported contact with bats.

The virus family *Filoviridae* is divided into 5 genera: *Cuevavirus*, *Marburgvirus*, *Ebolavirus*, *Striavirus*, and *Thamnovirus* (<https://talk.ictvonline.org/taxonomy>). Six distinct members of *Ebolavirus* have been described; 4 are known to cause human disease (1,2). These include highly lethal pathogens capable of producing large outbreaks, namely Bundibugyo, Sudan, and Zaire Ebola viruses, the last responsible for the devastating 2013–2016 outbreak in West Africa and an ongoing extended outbreak in the Democratic Republic of the Congo (1,3,4). Although the natural reservoirs of Ebola viruses remain unconfirmed, considerable evidence supports a role for bat species, particularly fruit bats, analogous to findings implicating *Rousettus aegypticus* fruit bats as a reservoir for Marburg virus (1,5,6).

The most recent Ebola virus to be identified is named Bombali virus (BOMV) and was reported in August 2018 in mouth and fecal swabs collected from free-tailed insectivorous bat species (family Molossididae) *Mops condylurus* and *Chaerephon pumilus* in Sierra Leone (2). Although BOMV

is not known to infect humans, its envelope glycoprotein shares the same NPC1 receptor as other filoviruses and is capable of mediating BOMV pseudotype virus entry into human cells (2). We describe the presence of BOMV in tissues and excreta of an Angolan free-tailed bat (*M. condylurus*) captured near the Taita Hills in southeastern Kenya, the easternmost distributional range of this bat species (7), >5,500 km from the original BOMV identification site in Sierra Leone (Figure 1). We also screened human serum samples collected from febrile patients in the Taita Hills area for markers of BOMV infection.

We identified BOMV in an adult female bat (B241) by reverse transcription PCR and next-generation sequencing. This bat was captured along with 15 others in mist nets in savannah habitat near a small river in May 2018; only this bat was BOMV positive (6% prevalence). Viral RNA was present in lung, spleen, liver, heart, intestine, mouth swab, and fecal samples but absent from the brain, kidney, urine, and a few fleas found on the bat; viral loads were especially high in the lung (Appendix, <https://wwwnc.cdc.gov/EID/article/25/5/18-1666-App1.pdf>). These tissue-positive findings confirm that BOMV can infect *M. condylurus* and is not an artifact of its insect diet, which could not be discounted from the previous analysis on the basis of mouth and fecal swabs (2). We also screened lung samples of sympatric *C. pumilus* bats (n = 13) and other bat species (Appendix Table 2) captured from the same area in February 2016 and May 2018; all were negative for BOMV RNA. Serologic analysis revealed antibodies against BOMV in the blood of the tissue-positive bat (Appendix Figure), but specific antibodies were not found in blood from the other bats (Appendix).

Our tissue-positive findings provide a strong host association between BOMV and *M. condylurus* bats; it is possible that BOMV-positive findings from other bat species result from local spillover or contamination. Moreover, phylogenetic analysis of the full BOMV genome from the bat lung revealed 98% nucleotide sequence similarity with the prototype reported in Sierra Leone (GenBank accession no. MK340750) (Figure 2). Considering the high sequence similarity between the 2 locations and that *M. condylurus* bats, like most insectivorous bats, are believed to travel only short distances (8), BOMV is likely to be distributed throughout much of sub-Saharan Africa

Author affiliations: University of Helsinki, Helsinki, Finland (K.M. Forbes, A.J. Jääskeläinen, I. Kivistö, H. Alburkat, I. Plyusnin, L. Levanov, E.M. Korhonen, E. Huhtamo, T. Smura, O. Vapalahti, T. Sironen); Maasai Mara University, Narok, Kenya (P.W. Webala); Helsinki University Hospital, Helsinki (A.J. Jääskeläinen, O. Vapalahti); Public Health Agency of Sweden, Stockholm, Sweden (S. Abdurahman, A. Mirazimi); University of Nairobi, Nairobi, Kenya (J. Ogola, M.M. Masika, D. Mwaengo, O. Anzala); Karolinska University Hospital, Stockholm (A. Mirazimi); National Veterinary Institute, Uppsala, Sweden (A. Mirazimi)

DOI: <https://doi.org/10.3201/eid2505.181666>

<sup>1</sup>Current affiliation: University of Arkansas, Fayetteville, Arkansas, USA.

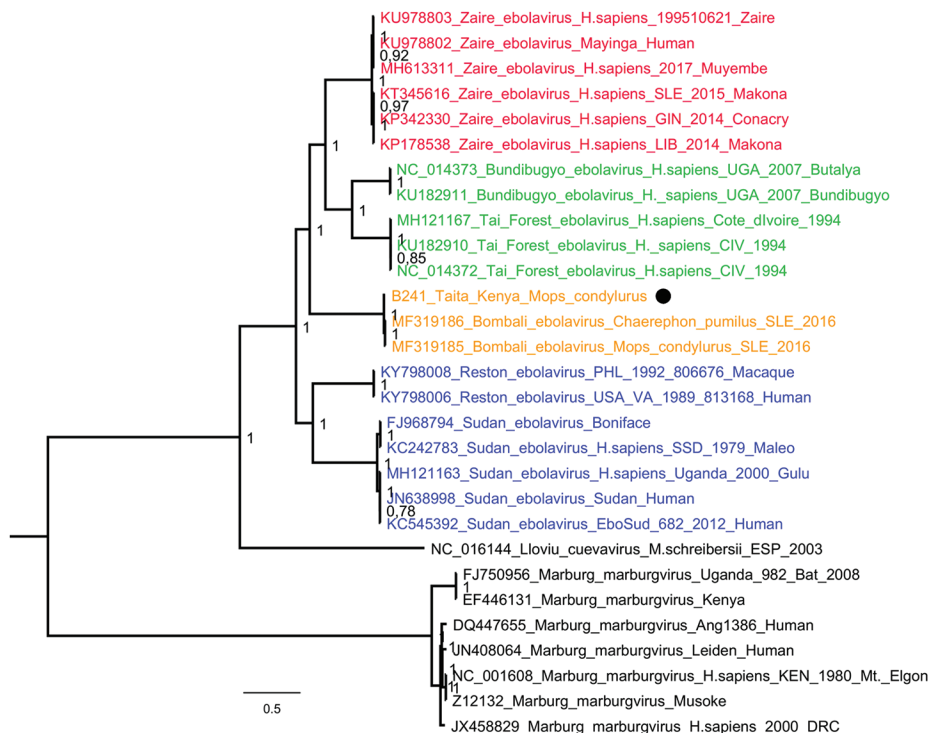


**Figure 1.** Locations of Bombali Ebola virus infection in Sierra Leone (gray shading at left; Bombali district in red) and Kenya (gray shading at right; Taita Hills area in green). Inset map shows collection site of the Bombali virus-positive bat (red dot) in Kenya, clinics in which human serum samples were collected (white squares), and the closest towns (black squares).

(7). However, further monitoring of *M. condylurus* and *C. pumilus* bats and other sympatric species across Africa is required to support this hypothesis.

Because *M. condylurus* bats commonly roost in human structures, such as house roofs (8,9), human exposure to this species is more likely than for many other bat species. Therefore, we screened for markers of human infection with BOMV by studying serum samples collected from

febrile patients who sought treatment at clinics in the Taita Hills area during April–August 2016. Clinics are located in the surrounding areas, all within 15 km of the BOMV-infected bat collection site (Figure 1). We screened patients for filovirus RNA ( $n = 81$ ) and Ebola virus-specific IgG ( $n = 250$ ) by an immunofluorescence assay using Zaire Ebola virus VP40-transfected VeroE6 cells as antigen (Appendix). Many samples, including



**Figure 2.** Phylogenetic tree of complete filovirus genomes (18,795–19,115 nt), including Bombali Ebola virus in Sierra Leone and now Kenya (19,026 nt; black dot). Representative sequences were retrieved from the Virus Pathogen Database and Analysis Resource and aligned with a MAFFT online server (<http://mafft.cbrc.jp/alignment/software>). The tree was built using the Bayesian Markov Chain Monte Carlo method, using a general time-reversible model of substitution with gamma-distributed rate variation among sites allowing the presence of invariable sites. Posterior probabilities are shown at the nodes. Scale bar indicates genetic distance.

all those screened for filovirus RNA, were from patients who reported contact with bats in the home or workplace. We found no evidence of filovirus infection by either screening method, providing no support that BOMV easily infects humans or is a common cause of febrile illness in the area. Ongoing surveillance is nonetheless necessary, and we cannot exclude the possibility that Bombali virus was a recent introduction to the Taita Hills area.

Our results markedly expand the distributional range of this new Ebola virus to eastern Africa and confirm the *M. condylurus* bat as a competent host. Like Goldstein et al. (2), we stress that the virus is not known to infect humans, a premise supported by our screening of febrile patients in the Taita Hills area. Potential efforts to eradicate bats are unwarranted and may jeopardize their crucial ecosystem roles and human health (10,11).

### Acknowledgments

We thank Joni Uusitalo and Michael Bartonjo for fieldwork assistance; Johanna Martikainen, Mira Utriainen, and Fathiah Zakham for laboratory assistance; and Ruut Uusitalo for preparing the figure map. We also thank the clinicians who recruited patients for the human study and the staff at the University of Helsinki Taita Research Station and its director, Petri Pellikka, for facilitating this work.

This research was supported by the Finnish Cultural Foundation, the Jenny and Antti Wihuri Foundation, the Academy of Finland (grant no. 318726), Helsinki University Hospital Funds, and the Jane and Aatos Erkko Foundation. A.J.J., S.A., L.L., A.M., O.V., and T.S. are part of the EbolaMoDRAD consortium, which has received funding to develop diagnostic methods for filoviruses from the Innovative Medicine Initiative 2 Joint Undertaking under grant agreement no. 115843. This Joint Undertaking receives support from the European Union's Horizon 2020 research and innovation program and the European Federation of Pharmaceutical Industries and Associations (EFPIA). Bat trapping and sample collections were carried out under permits from the National Commission for Science, Technology, and Innovation (permit no. NACOSTI/P/18/76501/22243) and the Kenya Wildlife Service (permit no. KWS/BRM/500). The Finnish Food Safety Authority (Evira) approved the importation of samples (permit nos. 4250/0460/2016 and 2809/0460/2018). Kenyatta National Hospital and the University of Nairobi Ethics and Research Committee approved the human study (permit no. P707/11/2015).

### About the Author

Dr. Forbes is a disease ecologist and assistant professor at the Department of Biological Sciences, University of Arkansas. His research interests include the maintenance and transmission of rodentborne and batborne zoonotic pathogens in nature and the effects of anthropogenic environmental changes on these processes.

### References

1. Olival KJ, Hayman DTS. Filoviruses in bats: current knowledge and future directions. *Viruses*. 2014;6:1759–88. <http://dx.doi.org/10.3390/v6041759>
2. Goldstein T, Anthony SJ, Gbakima A, Bird BH, Bangura J, Tremeau-Bravard A, et al. The discovery of Bombali virus adds further support for bats as hosts of ebolaviruses. *Nat Microbiol*. 2018;3:1084–9. <http://dx.doi.org/10.1038/s41564-018-0227-2>
3. Piot P, Muyembe JJ, Edmunds WJ. Ebola in west Africa: from disease outbreak to humanitarian crisis. *Lancet Infect Dis*. 2014;14:1034–5. [http://dx.doi.org/10.1016/S1473-3099\(14\)70956-9](http://dx.doi.org/10.1016/S1473-3099(14)70956-9)
4. Nkengasong JN, Onyebujoh P. Response to the Ebola virus disease outbreak in the Democratic Republic of Congo. *Lancet*. 2018;391:2395–8. [https://doi.org/10.1016/S0140-6736\(18\)31326-6](https://doi.org/10.1016/S0140-6736(18)31326-6)
5. Towner JS, Amman BR, Sealy TK, Carroll SA, Comer JA, Kemp A, et al. Isolation of genetically diverse Marburg viruses from Egyptian fruit bats. *PLoS Pathog*. 2009;5:e1000536. <http://dx.doi.org/10.1371/journal.ppat.1000536>
6. Leroy EM, Kumulungui B, Pourrut X, Rouquet P, Hassanin A, Yaba P, et al. Fruit bats as reservoirs of Ebola virus. *Nature*. 2005;438:575–6. <http://dx.doi.org/10.1038/438575a>
7. Happold M. *Tadarida condylura* Angolan free-tailed bat. In: Happold M, Happold D, editors. *Mammals of Africa (hedgehogs, shrews, and bats)*. Vol. 4. London: Bloomsbury; 2013. p. 505–7.
8. Noer CL, Dabelsteen T, Bohmann K, Monadjem A. Molossid bats in an African agro-ecosystem select sugarcane fields as foraging habitat. *Afr Zool*. 2012;47:1–11. <http://dx.doi.org/10.3377/004.047.0120>
9. Bronrier GN, Maloney SK, Buffenstein R. Survival tactics within thermally-challenging roosts: heat tolerance and cold sensitivity in the Angolan free-tailed bat, *Mops condylurus*. *S Afr Zool*. 1999;34:1–10. <http://dx.doi.org/10.1080/02541858.1999.11448481>
10. Kunz TH, Braun de Torrez E, Bauer D, Lobova T, Fleming TH. Ecosystem services provided by bats. *Ann N Y Acad Sci*. 2011; 1223:1–38. <http://dx.doi.org/10.1111/j.1749-6632.2011.06004.x>
11. Amman BR, Nyakarahuka L, McElroy AK, Dodd KA, Sealy TK, Schuh AJ, et al. Marburgvirus resurgence in Kitaka Mine bat population after extermination attempts, Uganda. *Emerg Infect Dis*. 2014;20:1761–4. <http://dx.doi.org/10.3201/eid2010.140696>

Address for correspondence: Kristian M. Forbes, University of Arkansas, Department of Biological Sciences, SCEN Bldg, 850 W Dickson St, Fayetteville, AR 16801, USA; email: kmforbes@uark.edu

# Bombali Ebola Virus in *Mops condylurus* Bat, Kenya

## Appendix

### Methods

Bats were captured in February 2016 and May 2018 as part of an ongoing virus screening project in the Taita Hills area of rural Kenya; all *M. condylurus* were captured in 2018. We employed mist and hand netting, and structured trapping site selection to focus on habitat and species diversity and minimize the number of individuals collected from any 1 species or site. Captured bats were placed into individual cotton bags, and processed at the University of Helsinki Taita Research Station. Species identifications were made in the field using keys (1). Non-conservation priority bat species (classified as least concern by the IUCN) were euthanized via cervical dislocation to collect blood, lung, liver, spleen, kidney, intestine and brain samples, as well as urine, feces, and ectoparasites when possible. Dissections were performed in a sheltered outside area, using personal protective equipment, including FFP3 facemasks, latex gloves, and safety gowns. Bat tissues were placed into separate marked tubes with RNAlater (Sigma, <https://www.sigmaaldrich.com>), stored at  $-20^{\circ}\text{C}$ , and later sent on dry ice to Helsinki, Finland.

At the University of Helsinki, under enhanced BSL-3 conditions, bat tissue samples were treated with Tripure (Roche, <http://www.roche.com>) to inactivate any potential hazardous agents before RNA extractions (Tripure method) and screening by a pan-filovirus RT-qPCR (2). Filovirus screening was initially conducted as a precaution, to facilitate screening for other viruses under less-strict biosafety conditions. The pan-filo RT-qPCR has been tested to detect Zaire EBOV, Bundibugyo, Sudan, Taï Forest, and Reston ebolavirus, in addition to Marburg virus (MARV) and Ravn Virus RNA. EBOV and MARV RNA were used as positive controls (in vitro RNAs) (3). Following the identification of a positive individual, with particularly high viral loads in the lung, lung samples from all bats were also screened with a Bombali virus-specific

real-time RT-PCR (4). All tissue, excreta, and ectoparasite samples were screened from the positive individual (Appendix Table 1), and viral loads determined by RT-qPCR with an in vitro transcribed RNA serving as the quantification standard. A full list of each bat species captured and screened is provided in Appendix Table 2.

Prior to whole-genome sequencing, RT-PCR positive samples were treated with DNase I (Thermo Fisher, <http://www.thermofisher.com>), and purified with Agencourt RNA Clean XP magnetic beads (Beckman Life Sciences, <https://www.beckman.com>). Ribosomal RNA was removed using a NEBNext rRNA depletion kit (New England BioLabs, <https://www.neb.com>), according to the manufacturer's protocol. The sequencing library was prepared using a NEBNext Ultra II RNA library prep kit (New England BioLabs). Libraries were quantified using a NEBNext Library Quant kit for Illumina (New England BioLabs). Pooled libraries were then sequenced on a MiSeq platform (Illumina, <https://www.illumina.com>) using a MiSeq v3 reagent kit with 300 bp paired-end reads. Raw sequence reads were trimmed and low-quality (quality score <15) and short (<36 nt) sequences were removed using Trimmomatic (5). Thereafter, de novo assembly was conducted using MegaHit (6). Open reading frames were sought using MetaGeneAnnotator (7), followed by taxonomic annotation using SANSparallel (8). We confirmed bat species identity of the positive individual by retrieving cytochrome-b sequences from the NGS reads (GenBank accession no. MK330941).

The phylogenetic tree was constructed using the Bayesian Markov chain Monte Carlo (MCMC) method, implemented in Mr Bayes version 3.2 (9) using a GTR-G-I model of substitution with 2 independent runs and 4 chains per run. The analysis was run for 5 million states and sampled every 5,000 steps. The average standard deviation of split frequencies was 0.000732.

Febrile patients seeking care at 3 health facilities in the Taita Hills (Wundanyi, Mwatate, and Voi) were recruited into the study by clinicians. A questionnaire was used to capture socio-demographic data and pertinent history, including a tickbox question regarding contact with bats at home or work. Based on the criterion of exposure to bats, a total of 81 patients (2.9–83.4 years of age; average, 38.8 years) were selected for analysis of filovirus RNA. Samples were collected within 5 days of the onset of fever. No patients reported bleeding. Reported symptoms included, in addition to fever; myalgia (54/81), joint pain (45/81), rash (9/81), diarrhea (8/81), vomiting

(7/81), headache (6/81) and cough (4/81). Serum samples were stored at the University of Helsinki Taita Research station at  $-20^{\circ}\text{C}$  for  $\leq 3$  weeks, and then transported on ice to a central laboratory at the University of Nairobi where they were stored at  $-80^{\circ}\text{C}$  and later shipped on dry ice to Helsinki. Nucleic acids were extracted from  $100\mu\text{L}$  of serum and eluted to  $50\mu\text{L}$  using the QIAamp Viral RNA Mini Kit (QIAGEN, <https://www.qiagen.com>) according to manufacturer's instructions. Pan-filovirus RT-qPCR was then conducted as described above, as well as Bombali virus-specific RT-PCR (4).

Human serum samples were analyzed for Ebola virus-specific IgG antibodies using an immunofluorescence assay (IFA) based on a recombinant Zaire ebolavirus VP-40 with a similar IFA protocol as described before (10), and demonstrated within the EbolaMoDRAED EU-IMI project to react with Zaire ebolavirus patient serum. Bombali virus VP40 protein is 75%–78% similar to that of other ebolaviruses, which have been demonstrated to cross-react within the genus (11). As antigen, we used acetone-fixed Vero E6 cells transfected with the pCAGGS-Ebola VP40 construct (Zaire ebolavirus, isolate Ebola virus/ H.sapiens-wt/SLE/2014/Makona-G3856.1 sequence, GenBank KM233113.1), and as controls, cells transfected with the empty vector. Patient serum samples were diluted 1:60 in PBS and incubated for 1 h at  $37^{\circ}\text{C}$ . Fluorescein isothiocyanate-conjugated anti-human IgG (Jackson ImmunoResearch, <https://www.jacksonimmuno.com>) was diluted 1:30 in PBS, and incubated for 30 min at  $37^{\circ}\text{C}$ . Unbound antibodies and anti-human IgG were washed 3 times with PBS and then once with distilled water. The slides were covered with mounting medium and coverslips, and read using a  $\times 20$  objective of fluorescence microscope Olympus IX71 (Olympus Corporation, [www.olympus-global.com](http://www.olympus-global.com)).

## **Additional Results**

Serologic analysis revealed antibodies against ebolavirus in the blood of the tissue-positive bat (Appendix Figure), but antibodies were not present in blood from the other bats. Note that bat blood samples (from RNA-negative individuals) were first heat inactivated under enhanced BSL-3 conditions. To minimize exposure risk, the blood sample from the positive bat was sent to the Public Health Agency of Sweden and screened under BSL-4 conditions. To detect bat antibodies in blood samples, Vero E6 cells transfected as above to produce ZEBOV



VP40, or at Public Health Agency of Sweden, infected with Zaire ebolavirus, were used in IFA according to a previously described protocol (12). Blood samples were diluted to 1:20 in PBS before incubation. Detection was done with goat anti-bat antibody Ig (Bethyl Laboratories, <https://www.bethyl.com>) at 1:1,000, followed by donkey anti-goat cyanin 2 (Cy2)-labeled Ig (Dianova, <https://www.dianova.com>) at 1:100. Slide staining and analysis were conducted as described above.

## References

1. Patterson BD, Webala PW. Keys to the bats (Mammalia: *Chiroptera*) of East Africa. *Fieldiana Life Earth Sci.* 2012;6:1–60. <http://dx.doi.org/10.3158/2158-5520-12.6.1>
2. Jääskeläinen AJ, Sironen T, Tidiane Diagne C, Moïse Diagne M, Faye M, Faye O, et al. Development, validation, and clinical evaluation of a broad-range pan-filovirus RT-qPCR applicable in freeze-dried format. *J Clin Virol.* In press 2019.
3. Jääskeläinen AJ, Moilanen K, Aaltonen K, Putkuri N, Sironen T, Kallio-Kokko H, et al. Development and evaluation of a real-time EBOV-L-RT-qPCR for detection of *Zaire ebolavirus*. *J Clin Virol.* 2015;67:56–8. [PubMed http://dx.doi.org/10.1016/j.jcv.2015.04.003](http://dx.doi.org/10.1016/j.jcv.2015.04.003)
4. Goldstein T, Anthony SJ, Gbakima A, Bird BH, Bangura J, Tremeau-Bravard A, et al. The discovery of Bombali virus adds further support for bats as hosts of ebolaviruses. *Nat Microbiol.* 2018;3:1084–9. [PubMed http://dx.doi.org/10.1038/s41564-018-0227-2](http://dx.doi.org/10.1038/s41564-018-0227-2)
5. Bolger AM, Lohse M, Usadel B. Trimmomatic: a flexible trimmer for Illumina sequence data. *Bioinformatics.* 2014;30:2114–20. [PubMed http://dx.doi.org/10.1093/bioinformatics/btu170](http://dx.doi.org/10.1093/bioinformatics/btu170)
6. Li D, Liu CM, Luo R, Sadakane K, Lam TW. MEGAHIT: an ultra-fast single-node solution for large and complex metagenomics assembly via succinct de Bruijn graph. *Bioinformatics.* 2015;31:1674–6. [PubMed http://dx.doi.org/10.1093/bioinformatics/btv033](http://dx.doi.org/10.1093/bioinformatics/btv033)
7. Noguchi H, Taniguchi T, Itoh T. MetaGeneAnnotator: detecting species-specific patterns of ribosomal binding site for precise gene prediction in anonymous prokaryotic and phage genomes. *DNA Res.* 2008;15:387–96. [PubMed http://dx.doi.org/10.1093/dnares/dsn027](http://dx.doi.org/10.1093/dnares/dsn027)
8. Somervuo P, Holm L. SANSparallel: interactive homology search against Uniprot. *Nucleic Acids Res.* 2015;43(W1):W24–W29. [PubMed http://dx.doi.org/10.1093/nar/gkv317](http://dx.doi.org/10.1093/nar/gkv317)

9. Ronquist F, Teslenko M, van der Mark P, Ayres DL, Darling A, Höhna S, et al. MrBayes 3.2: efficient Bayesian phylogenetic inference and model choice across a large model space. *Syst Biol.* 2012;61:539–42. [PubMed http://dx.doi.org/10.1093/sysbio/sys029](http://dx.doi.org/10.1093/sysbio/sys029)
10. Levanov L, Kuivanen S, Matveev A, Swaminathan S, Jääskeläinen-Hakala A, Vapalahti O. Diagnostic potential and antigenic properties of recombinant tick-borne encephalitis virus subviral particles expressed in mammalian cells from Semliki Forest virus replicons. *J Clin Microbiol.* 2014;52:814–22. [PubMed http://dx.doi.org/10.1128/JCM.02488-13](http://dx.doi.org/10.1128/JCM.02488-13)
11. Natesan M, Jensen SM, Keasey SL, Kamata T, Kuehne AI, Stonier SW, et al. Human survivors of disease outbreaks caused by Ebola or Marburg virus exhibit cross-reactive and long-lived antibody responses. *Clin Vaccine Immunol.* 2016;23:717–24. [PubMed http://dx.doi.org/10.1128/CVI.00107-16](http://dx.doi.org/10.1128/CVI.00107-16)
12. Binger T, Annan A, Drexler JF, Müller MA, Kallies R, Adankwah E, et al. A novel rhabdovirus isolated from the straw-colored fruit bat *Eidolon helvum*, with signs of antibodies in swine and humans. *J Virol.* 2015;89:4588–97. [PubMed http://dx.doi.org/10.1128/JVI.02932-14](http://dx.doi.org/10.1128/JVI.02932-14)

**Appendix Table 1.** Viral loads from *Mops condylurus* bat that tested positive for Bombali Ebola virus.

Sample	Ct value	Copy number/500 ng total RNA
Mouth swab†	24.00	Not applicable
Spleen	32.76	414
Liver	33.95	181
Intestine	32.76	413
Heart	29.82	3,173
Feces	29.14	5,121
Lung	16.74	27,950,000
Kidney	Negative	0
Urine	Negative	0
Fleas	Negative	0

\*Viral loads for each sample type were estimated using a standard curve based on in vitro transcribed and quantified RNA.

†Mouth swab has no copy number because it was screened in a BSL-4 laboratory in Sweden using a different protocol and without the standard curve.

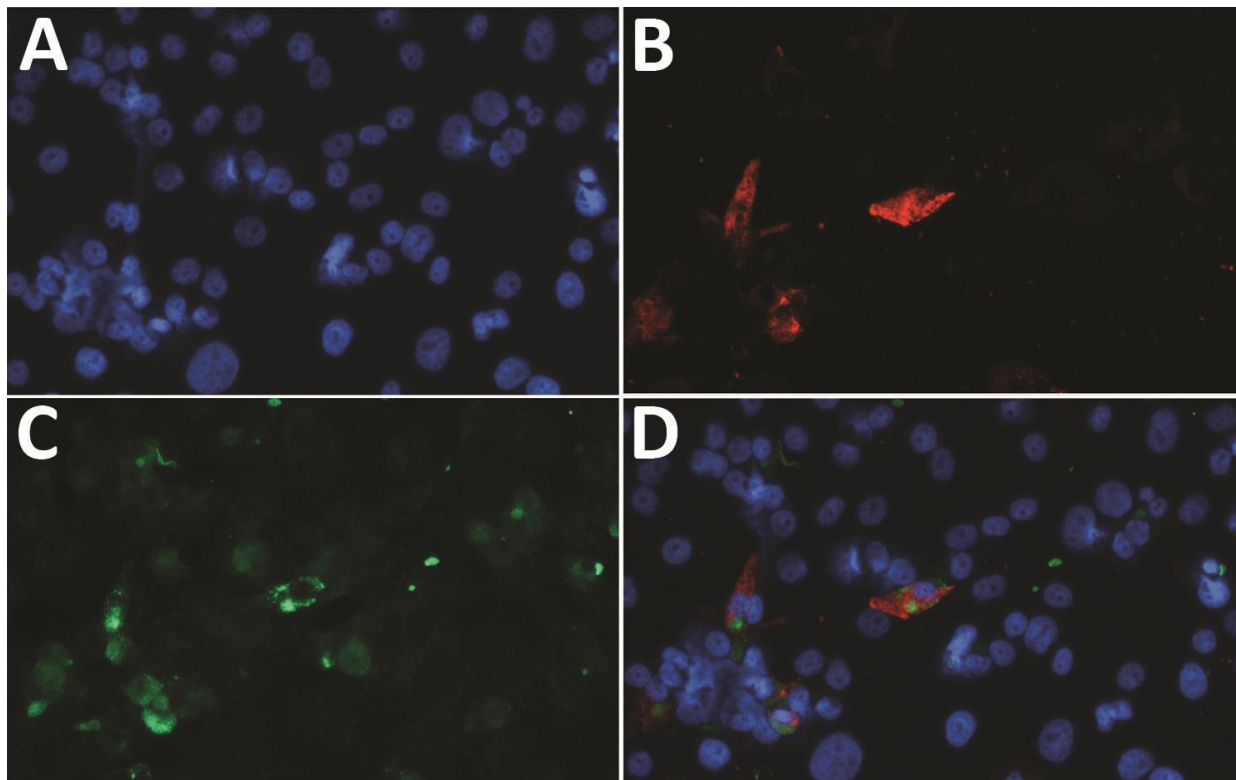
**Appendix Table 2.** Bat species screened for filoviruses, Kenya\*

Species	2016	2018
<i>Mops condylurus</i>	0	16
<i>Chaerephon pumilus</i>	4	7
<i>Cardioderma cor</i>	36	20
<i>Chaerephon chapini</i>	1	0
<i>Epomophorus wahlbergi</i>	19	23
<i>Glauconycteris argentata</i>	1	0
<i>Hipposideros caffer</i>	2	1
<i>Lavia frons</i>	0	1
<i>Lissonycteris angolensis</i>	10	0
<i>Myotis tricolor</i>	1	0
<i>Neoromicia nana</i>	0	3
<i>Nycticeinops schlieffeni</i>	3	1
<i>Nycteris thebaica</i>	0	1
<i>Rhinolophus clivosus</i>	0	2
<i>Rhinolophus landeri</i>	1	2



Species	2016	2018
<i>Rousettus aegyptiacus</i>	17	13
<i>Scotoecus hirundo</i>	34	4
<i>Scotophilus dinganii</i>	4	12
<i>Rousettus lanosus</i>	0	1
<i>Pipistrellus sp.</i>	20	0
<i>Neoromicia sp.</i>	0	1
<i>Miniopterus sp.</i>	6	0
<i>Hypsugo sp.</i>	4	0

\*Bats were captured from the Taita Hills area in 2016 and 2018. All bat lung samples were screened for filovirus RNA via a new pan-filovirus reverse transcription qualitative PCR (2) and a Bombali virus-specific real-time reverse transcription PCR (4).



**Appendix Figure.** Detection of Ebola virus-specific antibodies in Bat B241 (the BOMV RNA positive individual) using an immunofluorescence assay based on Zaire ebolavirus (ZEBOV)-infected, acetone-fixed Vero E6 cells. The slides contain ZEBOV-infected and noninfected control cells. A) 4',6-diamidino-2-phenylindole (DAPI) staining for cell nuclei. B) Staining with rabbit anti-ZEBOV-GP showing ZEBOV-infected cells. C) Staining with bat B241 serum at a dilution of  $\approx 1:200$ , demonstrating specific granular staining of ZEBOV-infected cells. D) A merge of stains demonstrating that the antibody response of bat B241 is Ebola virus genus cross-reactive, but targeting other viral proteins than the ZEBOV GP.