

## Nodular Human Lagochilascariasis Lesion in Hunter, Brazil

Flavio Queiroz-Telles,<sup>1</sup> Gabriel L.O. Salvador<sup>1</sup>

Author affiliation: Federal University of Paraná, Curitiba, Brazil

DOI: <https://doi.org/10.3201/eid2512.190737>

Lagochilascariasis is a rare helminthic infection caused by *Lagochilascaris minor* nematodes and found in Latin America; most cases are reported in the Amazon region. We report on a case observed in a hunter in southern Brazil and describe scanning electron microscopy results for *L. minor* adult forms.

Lagochilascariasis is a rare tropical helminthic anthro-pozoonotic disease caused by the nematode *Lagochilascaris minor* (1,2). Cases were described by Leiper on the island of Trinidad in 1909; since that report, several cases have been reported in tropical and subtropical zones of a few countries in Latin America, affecting mostly rural inhabitants from Mexico to Argentina, in both genders. Patients range from 2 to 67 years of age but are predominantly children and teenagers (2). Although the genus *Lagochilascaris* covers 6 species, *L. major*, *L. buckleyi*, *L. turgida*, *L. sprenti*, *L. multipapillatum*, and *L. minor*, only *L. minor* is related to human disease (3–5). Wild felines (*Felis onca*, *F. nebulosi*, and *F. pardalis*) are suspected to be the parasite's natural reservoirs (4).

A 54-year-old male rural worker from the state of Mato Grosso, Brazil, on the border of the Amazon forest, sought medical attention for a 6-month history of a nodular lesion on the right side of the neck. He was a hunter and reported sporadic ingestion of domestic and wild feline raw meat, including meat from jaguars (*Panthera onca*). He was in good general health, except for a tumoral lesion measuring 10 cm in diameter surrounded by an irregular and erythematous skin surface in the left submandibular region, with fistulous tracts expelling 5–15-mm worms (Figure, panel A). We performed a skin biopsy for histopathologic studies and scanning electron microscopy (SEM) of the worms collected.

We tentatively identified the worms as *L. minor* nematodes on the basis of the following features. The skin biopsy showed multiple sinus tracts containing eggs measuring 50–90  $\mu\text{m}$  and having thick shells with coarse, pitted surfaces. Larval fragments were also observed in a granulomatous reaction (Figure, panel B). Optic microscopy of 1 adult worm showed the ejaculatory duct in the posterior

surrounded by spicules; the ratio of the ejaculatory duct length to the spicule length was  $\approx 2$ , strongly suggestive of *L. minor* (Figure, panel C).

SEM of the anterior end of the worms showed 2 subventral lips, 1 subdorsal lip, 2 interlabia, 1 postlabial groove, papillae, and 1 amphidial pore (Figure, panel D), compatible with previous reports of *L. minor* nematodes (1–5). The 3 lips were concentrically located around the oral opening.

Eosinophil count in the peripheral blood, together with biochemical and hematologic laboratory examinations, showed no abnormalities. Results of imaging evaluation of the patient's chest and skull were also normal. We treated the patient with levamisole (300 mg/d); after 1 week, improvement in the inflammatory signs and a reduction of the purulent discharge were seen. We performed surgical resection of the lesion and continued administering levamisole at the same dosage for 2 more weeks. We then decreased the dosage by half for another 2 weeks. Follow-up biopsies showed improvement of the inflammation and absence of worms and eggs.

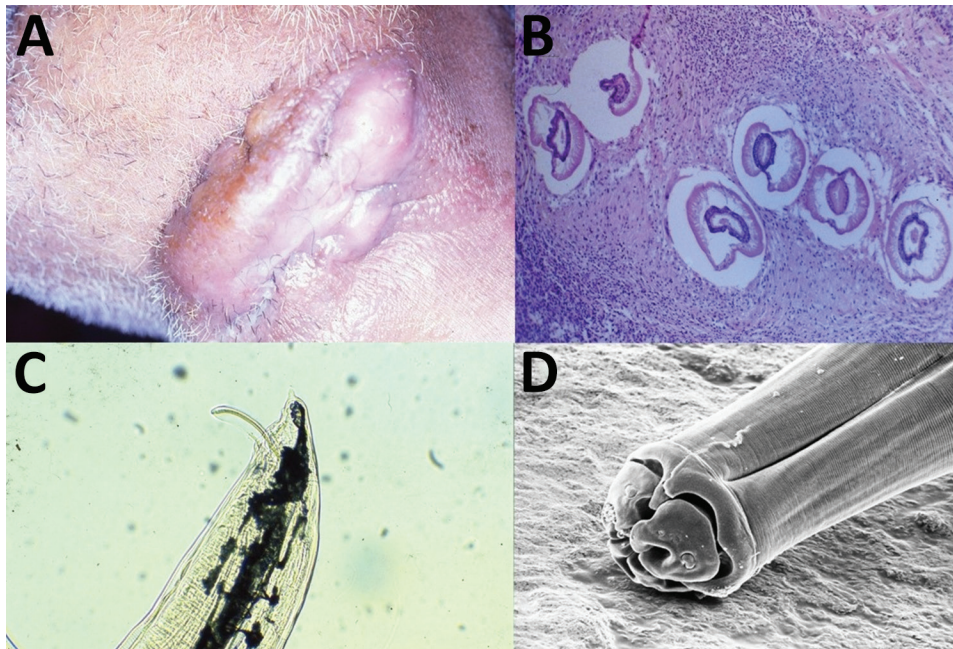
More than 100 human cases of lagochilascariasis have been reported (5). Most cases were characterized by cervical, mastoid, middle ear, pharynx, and brain nodules (5–7).

Recently, several studies have proposed that when wild cats (definitive hosts) ingest infecting eggs orally, the parasites do not reach sexual maturity (7). Other studies have proposed that when felines ingest rodent carcasses infected with third-stage (L3) larvae, larval hatching from cysts occurs in the stomach (5). After hatching, larvae migrate to upper regions of the digestive tract, reaching the adult stage in tissues of the nose and oropharynx. Some studies also suggested the idea of autoinfection, as many biopsy studies found larvae in several stages of development and eggs (8,9). The uncommon eating habits of this patient corroborate the theory of infection resulting from ingestion of raw feline meat with L3 larvae together with an autoinfection process.

SEM of *L. minor* nematode, as described in a study by Lanfredi et al. (10), shows the anterior end with 2 subventral papillae and lips with 1 dorsal papilla, 1 amphidial pore, and triangular interlabial prolongations (10). The longitudinal ventral view of the anterior region shows an excretory pore and a lateral line. The lateral view of the lips shows a deep groove around the lips forming the interlabial projection, 1 subventral lip with 1 papilla, and 1 amphidial pore (10,11). Morphologic features suggestive of *L. minor* are provided (Appendix Table, <https://wwwnc.cdc.gov/EID/article/25/12/19-0737-App1.pdf>).

Treatment for lagochilascariasis involves thiabendazole, cambendazole, mebendazole, albendazole, praziquantel, and ivermectine (8,9). Most series report initial treatment with thiabendazole, followed by diethylcarbamazine or mebendazole and, finally, levamisole (9). Most reports

<sup>1</sup>Both authors contributed equally to this article.



**Figure.** Lagochilascariasis in a 54-year-old male hunter in Brazil. A) Nodular tumorous lesion on cervical region caused by *L. minor* infection. B) Biopsy specimen of nodular lesion showing granuloma and larvae of *L. minor* nematode. Hematoxylin and eosin staining. Original magnification  $\times 50$ . C) Optic microscopy shows the ejaculatory duct with spicule and lateral alae of *L. minor*. The ratio of ejaculatory duct length to spicule length of the worms is  $\approx 2$ . Original magnification  $\times 50$ . D) Scanning electron microscopy of the anterior end of *L. minor* nematode showing 2 subventral lips, 1 subdorsal lip, 2 interlabia, postlabial groove, papillae, and 1 amphidial pore. Original magnification  $\times 800$ .

describe recurrent and refractory infections, often because when the presence of *L. minor* nematodes is reduced and the lesion heals, physicians consider the infection resolved (8). However, relapses occur when inadequate treatment is given, because of the autoinfective life cycle. Although the life cycle of *L. minor* nematodes is still unknown, patients should be treated for  $\geq 1$  month after the clinical cure to avoid relapses.

### About the Authors

Dr. Queiroz-Telles is an associate professor of infectious diseases at the Federal University of Parana in Brazil, with lines of research in the areas of neglected diseases and medical mycology. Dr. Salvador is a physician at the Federal University of Parana, with a concentration in head and neck and central nervous system infections.

### References

- Barrera-Pérez M, Manrique-Saïde P, Reyes-Novelo E, Escobedo-Ortegón J, Sánchez-Moreno M, Sánchez C. *Lagochilascaris minor* Leiper, 1909 (Nematoda: Ascarididae) in Mexico: three clinical cases from the peninsula of Yucatan. *Rev Inst Med Trop São Paulo*. 2012;54:315–7. <https://doi.org/10.1590/S0036-46652012000600005>
- Sprent JFA. Speciation and development in the genus *Lagochilascaris*. *Parasitology*. 1971;62:71–112. <https://doi.org/10.1017/S0031182000071316>
- Roig JL, Roig-Ocampos Forteza JL, Granato L, Poletti Serafini D. Otomastoiditis with right retroauricular fistula by *Lagochilascaris minor*. *Rev Bras Otorrinolaringol (Engl Ed)*. 2010;76:407. <https://doi.org/10.1590/S1808-86942010000300025>
- Vieira MA, de Oliveira JA, Ferreira LS, de Oliveira V, Barbosa CA. A case report of human lagochilascariasis coming from Pará State, Brazil [in Portuguese]. *Rev Soc Bras Med Trop*. 2000;33:87–90. <https://doi.org/10.1590/S0037-8682200000100014>
- Campos DM, Freire Filha LG, Vieira MA, Paçõ JM, Maia MA. Experimental life cycle of *Lagochilascaris minor* Leiper, 1909. *Rev Inst Med Trop São Paulo*. 1992;34:277–87. <https://doi.org/10.1590/S0036-46651992000400003>
- Aguilar-Nascimento JE, Silva GM, Tadano T, Valadares Filho M, Akiyama AM, Castelo A. Infection of the soft tissue of the neck due to *Lagochilascaris minor*. *Trans R Soc Trop Med Hyg*. 1993;87:198. [https://doi.org/10.1016/0035-9203\(93\)90491-8](https://doi.org/10.1016/0035-9203(93)90491-8)
- Bento RF, Mazza CC, Motti EF, Chan YT, Guimarães JR, Miniti A. Human lagochilascariasis treated successfully with ivermectin: a case report. *Rev Inst Med Trop São Paulo*. 1993;35:373–5. <https://doi.org/10.1590/S0036-46651993000400012>
- Vargas-Ocampo F, Alvarado-Aleman FJ. Infestation from *Lagochilascaris minor* in Mexico. *Int J Dermatol*. 1997;36:56–8. <https://doi.org/10.1111/j.1365-4362.1997.tb03307.x>
- Falcón-Ordaz J, Iturbe-Morgado JC, Rojas-Martínez AE, García-Prieto L. *Lagochilascaris minor* (Nematoda: Ascarididae) from a wild cougar (*Puma concolor*) in Mexico. *J Wildlife Dis*. 2016;52:746–8. <http://doi.org/10.7589/2015-09-232>
- Lanfredi RM, Fraiha Neto H, Gomes DC. Scanning electron microscopy of *Lagochilascaris minor* Leiper, 1909 (Nematoda: Ascarididae). *Mem Inst Oswaldo Cruz*. 1998;93:327–30. <https://doi.org/10.1590/S0074-02761998000300009>
- Campos DMB, Barbosa AP, Oliveira JA, Tavares GG, Cravo PVL, Ostermayer AL. Human lagochilascariasis—a rare helminthic disease. *PLoS Negl Trop Dis*. 2017;11:e0005510. <https://doi.org/10.1371/journal.pntd.0005510>

Address for correspondence: Flavio Queiroz-Telles, Federal University of Paraná, General Carneiro 181, Alto da Glória, Curitiba, Paraná, 80060-900, Brazil; email: queiroz.telles@uol.com.br

# Nodular Human Lagochilascariasis Lesion in Hunter, Brazil

## Appendix

**Appendix Table.** Morphological features useful for the diagnosis of *Lagochilascaris minor*.

Feature	Description
Length (mm) (1)	9 (male); 15 (female)
Ratio of ejaculatory duct length/spicule length (1)	>1
Morphology of the eggs (1)	Thick shells with 15–25 coarse pits
SEM morphology of the anterior end (2)	Dorsal lip harboring 2 subdorsal papillae and subventral lips with 1 ventrolateral papilla, 1 small papilla, and 1 amphidial pore, triangular interlabial prolongations. Excretory pores may be seen in lateral views.
Ancillary features (1)	<ul style="list-style-type: none"><li>• Lateral alae supported by cuticular bars extending from the nerve ring region for the whole length of the body.</li><li>• Striated esophagus throughout its length and gradually widened toward the posterior end.</li><li>• Lateral phasmids between the subdorsal and subventral papillae.</li><li>• Males with smooth and rounded tips. Postcloacal papillae somewhat variable in number and distribution.</li><li>• Females with a pair of prominent phasmids on each side in a laterodorsal position. Vulva usually behind the middle of the body.</li></ul>

## References

1. Sprent JFA. Speciation and development in the genus *Lagochilascaris*. *Parasitology*. 1971;62:71–112.  
<https://doi.org/10.1017/S0031182000071316>
2. Campos DMB, Barbosa AP, Oliveira JA, Tavares GG, Cravo PVL, Ostermayer AL. Human lagochilascariasis—a rare helminthic disease. *PLoS Negl Trop Dis*. 2017;11:e0005510.  
<https://doi.org/10.1371/journal.pntd.0005510>