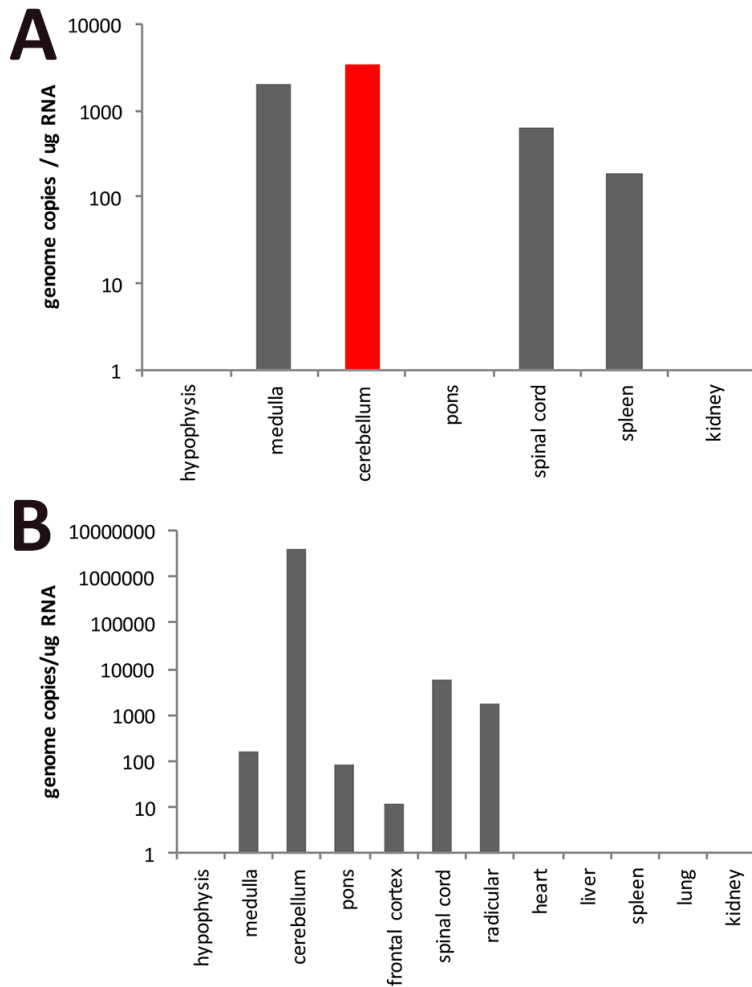
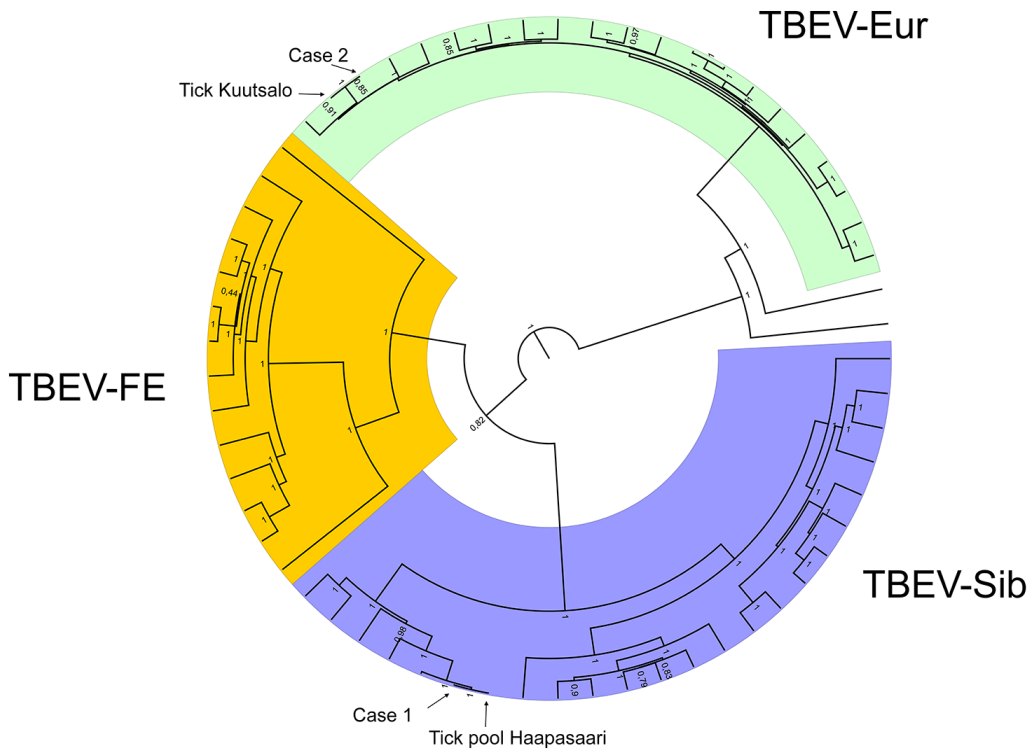


# Fatal Tick-Borne Encephalitis Virus Infections Caused by Siberian and European Subtypes, Finland, 2015

## Technical Appendix



**Technical Appendix Figure 1.** Tick-borne encephalitis virus (TBEV) RNA detection in brain of patients 1 (A) and 2 (B).



**Technical Appendix Figure 2.** Maximum clade credibility tree of tick-borne encephalitis virus (TBEV). The phylogenetic trees were constructed from complete coding regions of TBEV-Sib (A) and TBEV-Eur (B) using Bayesian MCMC method with TN93-G-I model of substitution, lognormal relaxed clock model and Bayesian skyline demographic model. Posterior probabilities are shown in each node.