

## Early Evidence for Zika Virus Circulation among *Aedes aegypti* Mosquitoes, Rio de Janeiro, Brazil

Tania Ayllón, Renata de Mendonça Campos, Patrícia Brasil, Fernanda Cristina Morone, Daniel Cardoso Portela Câmara, Guilherme Louzada Silva Meira, Egbert Tannich, Kristie Aimi Yamamoto, Marília Sá Carvalho, Renata Saraiva Pedro, Jonas Schmidt-Chanasit, Daniel Cadar, Davis Fernandes Ferreira, Nildimar Alves Honório

Author affiliations: Instituto Nacional de Infectologia Evandro Chagas–Fiocruz, Rio de Janeiro, Brazil (T. Ayllón, P. Brasil, R.S. Pedro); Núcleo Operacional Sentinela de Mosquitos Vetores-Nosmove–Fiocruz, Rio de Janeiro (T. Ayllón, F.C. Morone, D.C.P. Câmara, N.A. Honório); Universidade Federal do Rio de Janeiro, Rio de Janeiro (R.M. Campos, G.L.S. Meira, K.A. Yamamoto, D.F. Ferreira); Instituto Oswaldo Cruz–Fiocruz, Rio de Janeiro (D.C.P. Câmara, N.A. Honório); Bernhard Nocht Institute for Tropical Medicine, Hamburg, Germany (E. Tannich, J. Schmidt-Chanasit, D. Cadar); Programa de Computação Científica–Fiocruz, Rio de Janeiro (M.S. Carvalho); German Centre for Infection Research Hamburg-Luebeck-Borstel, Hamburg (J. Schmidt-Chanasit)

DOI: <https://doi.org/10.3201/eid2308.162007>

During 2014–2016, we conducted mosquito-based Zika virus surveillance in Rio de Janeiro, Brazil. Results suggest that Zika virus was probably introduced into the area during May–November 2013 via multiple in-country sources. Furthermore, our results strengthen the hypothesis that Zika virus in the Americas originated in Brazil during October 2012–May 2013.

Zika virus is an emerging arthropod-borne virus that was first isolated from sentinel rhesus macaques in 1947 in Africa. Zika virus caused outbreaks of disease in the Pacific region and emerged in northeastern Brazil in March 2015, followed by Rio de Janeiro in May 2015 (1–3). The *Aedes aegypti* mosquito is considered the main vector of Zika virus in urban and suburban areas throughout the world, including Brazil, where the mosquito has been confirmed, together with *Ae. albopictus* mosquitoes, as a vector for the virus (4). Entomologic surveillance for arboviruses in field-trapped mosquitoes is a critical tool for identifying local natural vectors and key sites for increased transmission risks as well as for predicting arbovirus epidemics (5,6). Therefore, virus surveillance

based on field-trapped mosquitoes is a vital tool for public health authorities.

We conducted a surveillance program for mosquito-borne viruses during February 2014–June 2016 in Manginhos neighborhood in Rio de Janeiro, Brazil. We collected mosquitoes on a weekly basis by using portable backpack aspirators and transported them on dry ice to the Núcleo Operacional Sentinela de Mosquitos Vetores-Nosmove/Fiocruz in Rio de Janeiro, where they were counted and their sex and species level were determined.

The collected mosquitoes included a total of 417 engorged female mosquitoes (406 *Ae. aegypti* and 11 *Ae. albopictus* mosquitoes), which we pooled ( $n = 178$ ) and subjected to Zika virus detection using real-time RT-PCR (7). Two of the pools (C20 and P52) were confirmed positive for Zika virus by conventional PCR (8). Pool C20 comprised 2 *Ae. aegypti* mosquitoes obtained in April 2015 from a household located in the João Goulart Park in Manginhos; sample P52 comprised 1 *Ae. aegypti* mosquito obtained in January 2016 during a mosquito-collecting activity in a junkyard located in the São Pedro slum in Manginhos. Sanger sequencing of the amplified fragments (8) confirmed the presence of Zika virus in pools C20 and P52, and we subjected both pools to deep sequencing to obtain larger fragments of the genome.

We performed phylogenetic and phylogeographic analyses based on the near-complete envelope gene sequences of Zika virus from the 2 positive mosquito pools and on all available sequences for Asian genotype Zika virus strains responsible for outbreaks in the Americas. The analyses revealed that strains from pools C20 and P52 (GenBank accession nos. KY354186 and KY354187, respectively) clustered within the same strongly supported lineage, which included strains detected in Rio de Janeiro and other parts of Brazil in late 2015 and in 2016 (online Technical Appendix Figure, <https://wwwnc.cdc.gov/EID/article/23/8/16-2007-Techapp1.pdf>). The mosquito-derived Zika virus detected in January 2016, strain P52, subsequently formed a subclade with human-derived Zika virus strains from Rio de Janeiro detected during March–April 2016. Furthermore, some previously reported human-derived Zika virus strains from Rio de Janeiro clustered in different lineages (online Technical Appendix Figure). The time-resolved phylogeny including the 2 mosquito strains from this study suggests that Zika virus was probably introduced in Rio de Janeiro during May–November 2013. The time to most recent common ancestor of Zika virus from the Americas is estimated to be October 2012–May 2013. These results further strengthen the hypothesis that Zika virus in the Americas originated in Brazil (9). The different clustering pattern of sequences of the human-derived Zika virus from Rio de Janeiro suggests that multiple Zika virus lineages may be circulating in Rio de Janeiro State.

In this study, we detected Zika virus RNA in 2 pools of engorged *Ae. aegypti* mosquitoes that were collected during a mosquito-borne virus surveillance program in Rio de Janeiro. Information regarding Zika virus infection rates is lacking for female and male mosquitoes trapped in the field. However, experiments performed in the laboratory demonstrated transovarial transmission of Zika virus among *Ae. aegypti* mosquitoes and revealed a minimal filial infection rate of 1:290 (10). Mosquito-borne virus surveillance provides an early warning for arbovirus circulation, points out high-risk areas for virus transmission, and provides data for directing control measures. Furthermore, future surveillance-based studies should further illuminate Zika virus ecology and patterns of spatial dynamics.

In conclusion, we showed the presence of Zika virus in engorged *Ae. aegypti* mosquitoes trapped in Rio de Janeiro before the first case of autochthonous Zika virus disease was diagnosed in the city (3). This finding emphasizes the importance and benefit of routine entomologic surveillance programs to public health in terms of ensuring timely implementation of disease prevention and control measures. Furthermore, considering that the analyzed Zika virus from Rio de Janeiro clustered in different lineages, our phylogenetic analysis suggests multiple introductions of Zika virus from other regions of Brazil, rather than from outside the country, and an early presence (2013) of Zika virus in Rio de Janeiro State.

### Acknowledgments

We acknowledge the Sequencing Platform Network, Technological Development Program in Materials for Health-PDTIS (Fiocruz, Brazil), for viral genomic sequencing. We thank Alexandra Bialonski for excellent technical assistance in next-generation sequencing.

This work was supported by grants from the Conselho Nacional de Desenvolvimento Científico e Tecnológico-CNPq, Fundação de Amparo à Pesquisa do Estado do Rio de Janeiro-FAPERJ (grant nos. 401542/2015-7, E-26/102.241/2013, and E-26/010.001610/2016) and Fundação Oswaldo Cruz.

Dr. Ayllón is a postdoctoral researcher in the Instituto Nacional de Infectologia Evandro Chagas-Fiocruz. Her research interests include entomology, virology, and immunology, with special focus on mosquito-borne viruses.

### References

1. Zammarchi L, Tappe D, Fortuna C, Remoli ME, Günther S, Venturi G, et al. Zika virus infection in a traveller returning to Europe from Brazil, March 2015. *Euro Surveill.* 2015;20:21153. <http://dx.doi.org/10.2807/1560-7917.ES2015.20.23.21153>
2. Zanluca C, Melo VC, Mosimann AL, Santos GI, Santos CN, Luz K. First report of autochthonous transmission of Zika virus in Brazil. *Mem Inst Oswaldo Cruz.* 2015;110:569–72. <http://dx.doi.org/10.1590/0074-02760150192>

3. Calvet GA, Filippis AM, Mendonça MC, Sequeira PC, Siqueira AM, Veloso VG, et al. First detection of autochthonous Zika virus transmission in a HIV-infected patient in Rio de Janeiro, Brazil. *J Clin Virol.* 2016;74:1–3. <http://dx.doi.org/10.1016/j.jcv.2015.11.014>
4. Chouin-Carneiro T, Vega-Rua A, Vazeille M, Yebakima A, Girod R, Goindin D, et al. Differential susceptibilities of *Aedes aegypti* and *Aedes albopictus* from the Americas to Zika virus. *PLoS Negl Trop Dis.* 2016;10:e0004543. <http://dx.doi.org/10.1371/journal.pntd.0004543>
5. Jöst H, Bialonski A, Maus D, Sambri V, Eiden M, Groschup MH, et al. Isolation of usutu virus in Germany. *Am J Trop Med Hyg.* 2011;85:551–3. <http://dx.doi.org/10.4269/ajtmh.2011.11-0248>
6. dos Reis IC, Honório NA, Codeço CT, Magalhães MA, Lourenço-de-Oliveira R, Barcellos C. Relevance of differentiating between residential and non-residential premises for surveillance and control of *Aedes aegypti* in Rio de Janeiro, Brazil. *Acta Trop.* 2010;114:37–43. <http://dx.doi.org/10.1016/j.actatropica.2010.01.001>
7. Lanciotti RS, Kosoy OL, Laven JJ, Velez JO, Lambert AJ, Johnson AJ, et al. Genetic and serologic properties of Zika virus associated with an epidemic, Yap State, Micronesia, 2007. *Emerg Infect Dis.* 2008;14:1232–9. <http://dx.doi.org/10.3201/eid1408.080287>
8. Wæhre T, Maagard A, Tappe D, Cadar D, Schmidt-Chanasit J. Zika virus infection after travel to Tahiti, December 2013. *Emerg Infect Dis.* 2014;20:1412–4. <http://dx.doi.org/10.3201/eid2008.140302>
9. Naccache SN, Thézé J, Sardi SI, Somasekar S, Greninger AL, Bandeira AC, et al. Distinct Zika virus lineage in Salvador, Bahia, Brazil. *Emerg Infect Dis.* 2016;22:1788–92. <http://dx.doi.org/10.3201/eid2210.160663>
10. Thangamani S, Huang J, Hart CE, Guzman H, Tesh RB. Vertical transmission of Zika virus in *Aedes aegypti* mosquitoes. *Am J Trop Med Hyg.* 2016;95:1169–73. <http://dx.doi.org/10.4269/ajtmh.16-0448>

Address for correspondence: Jonas Schmidt-Chanasit, Bernhard Nocht Institute for Tropical Medicine, WHO Collaborating Centre for Arbovirus and Haemorrhagic Fever Reference and Research, Bernhard-Nocht-Strasse 74, 20359 Hamburg, Germany; email: jonassi@gmx.de

## Scrub Typhus Outbreak in a Remote Primary School, Bhutan, 2014

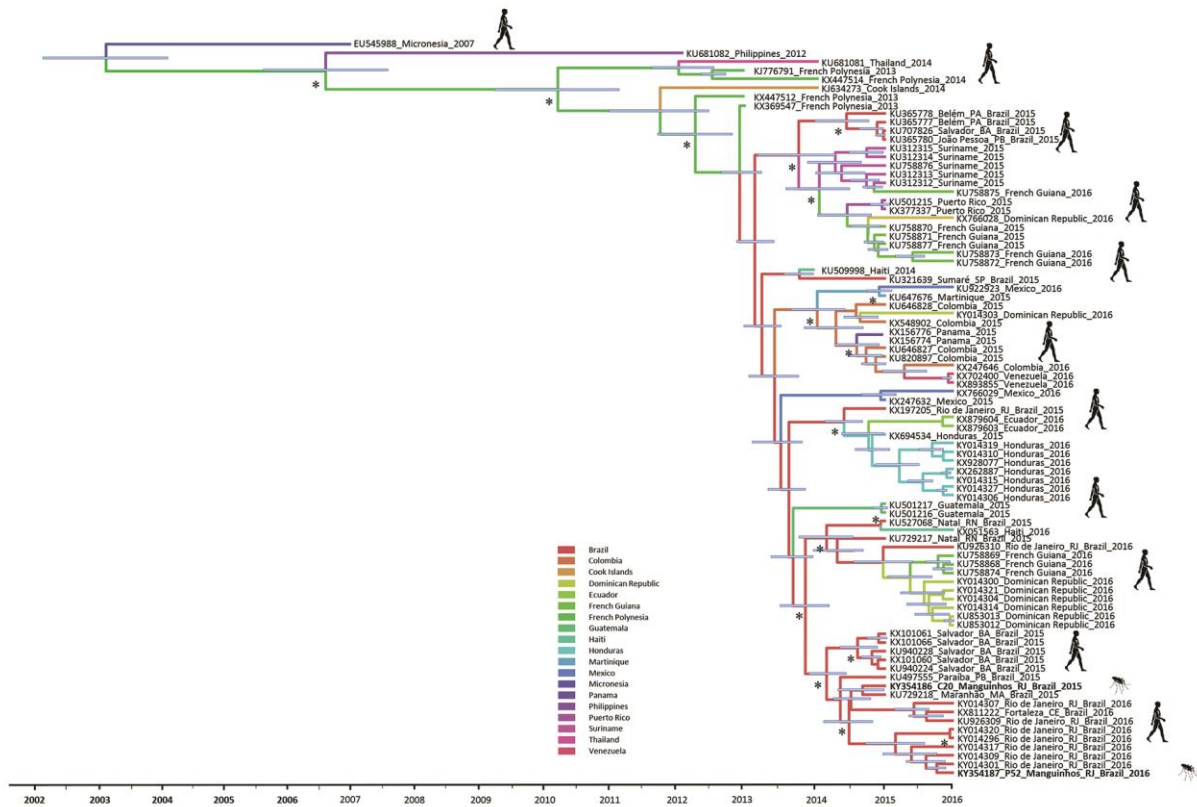
Tshokey Tshokey, Stephen Graves, Dorji Tshering, Kelzang Phuntsho, Karchung Tshering, John Stenos

Author affiliations: Jigme Dorji Wangchuck National Referral Hospital, Thimphu, Bhutan (T. Tshokey); University Hospital Geelong, Geelong, Victoria, Australia (T. Tshokey, S. Graves, J. Stenos); Bajo Hospital, Wangduephodrang, Bhutan (D. Tshering); Royal Centre for Disease Control, Ministry of Health, Thimphu (K. Phuntsho, K. Tshering)

DOI: <https://doi.org/10.3201/eid2308.162021>

# Early Evidence for Zika Virus Circulation among *Aedes aegypti* Mosquitoes, Rio de Janeiro, Brazil

## Technical Appendix



**Technical Appendix Figure.** Bayesian maximum clade credibility (MCC) tree representing the time-scale phylogeny of the Zika virus outbreaks in the Americas. The time-scaled phylogeny was performed by using the Bayesian Markov chain Monte Carlo tree-sampling method with BEAST version 1.8.3 (<http://beast.bio.ed.ac.uk/>) and in parallel the maximum-likelihood method (not shown) using PhyML 3.0 (<http://www.atgc-montpellier.fr/phyml/versions.php>) with 1,000 pseudoreplicates based on near-complete envelope coding region sequences. The Akaike information criterion was chosen as the model selection

framework, and the general time-reversible plus gamma distribution plus invariable site model was chosen as the best model. The Bayesian molecular clock phylogeny was estimated by using a strict molecular clock and Bayesian skyline coalescent prior. The posterior probability distributions were visualized by using Tracer version 1.6 (<http://tree.bio.ed.ac.uk/software/tracer/>). The colored branches of MCC trees represent the most probable geographic location of their descendant nodes (see figure key). Zika virus sequences generated from viruses derived from mosquitoes in this study are in red and bold. Blue horizontal bars represent 95% Bayesian credible intervals for divergence dates. Asterisks at the nodes represent posterior probability values (clade credibility>90%) and percentage bootstrap support values (>70%) based on 1,000 replicates. GenBank accession numbers, country of origin, and year of detection for sequences used to construct the tree are indicated on the branches. For Zika virus strains from Brazil, the location and the states of origin have been included. Brazil states: BA, Bahia; CE, Ceará; MA, Maranhão; PA, Pará; PB, Paraíba; RJ, Rio de Janeiro; RN, Rio Grande do Norte; SP, São Paulo.