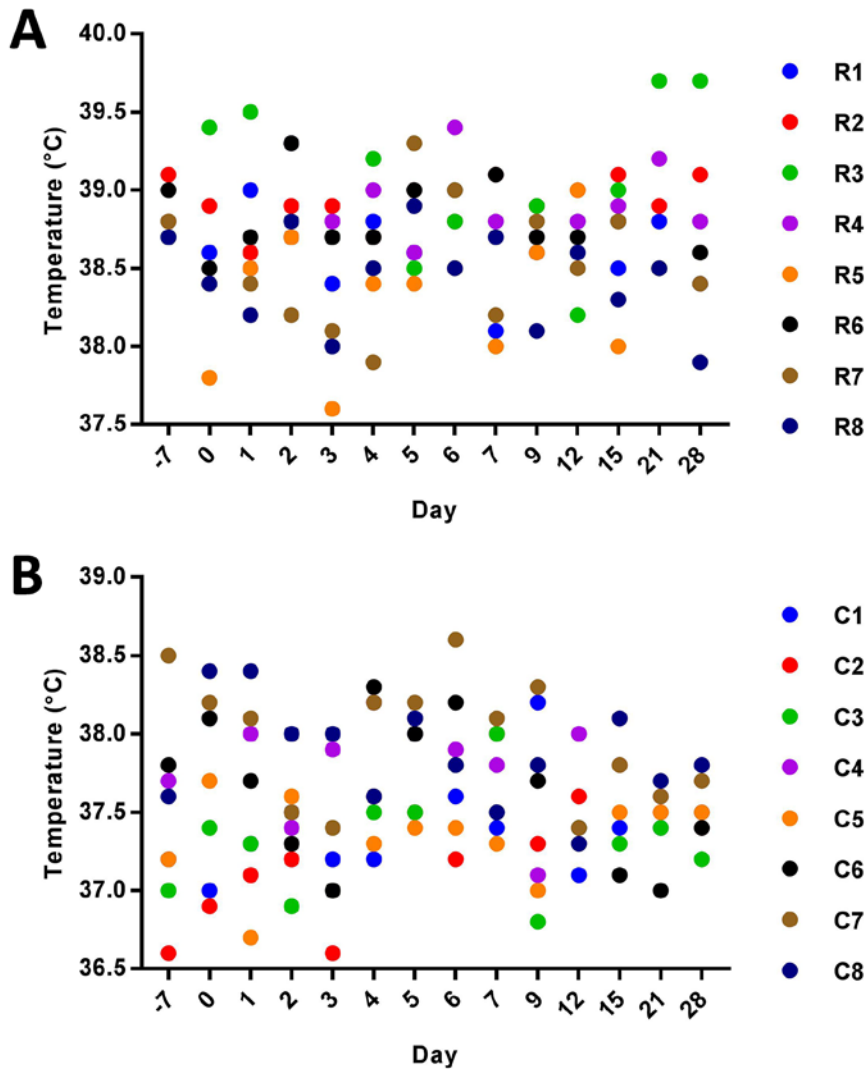
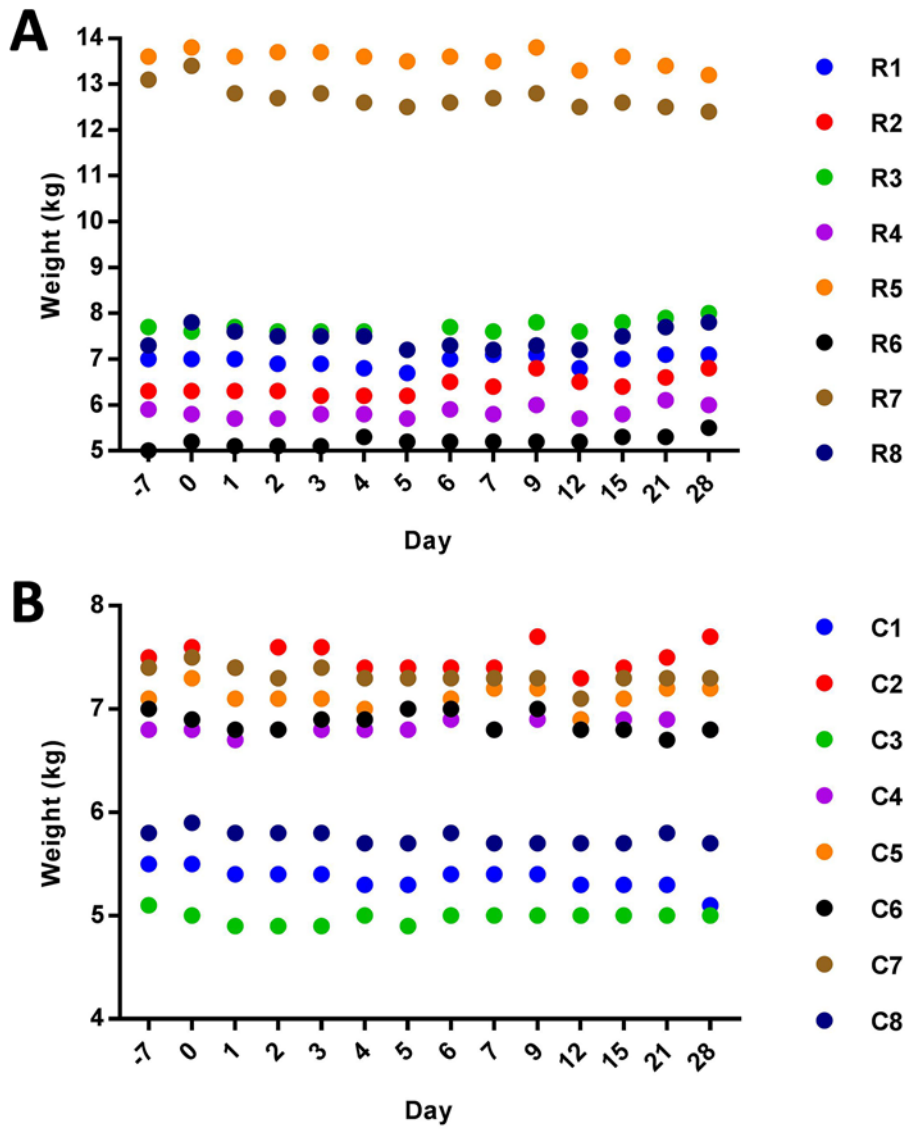


# High Infection Rates for Adult Macaques after Intravaginal or Intrarectal Inoculation with Zika Virus

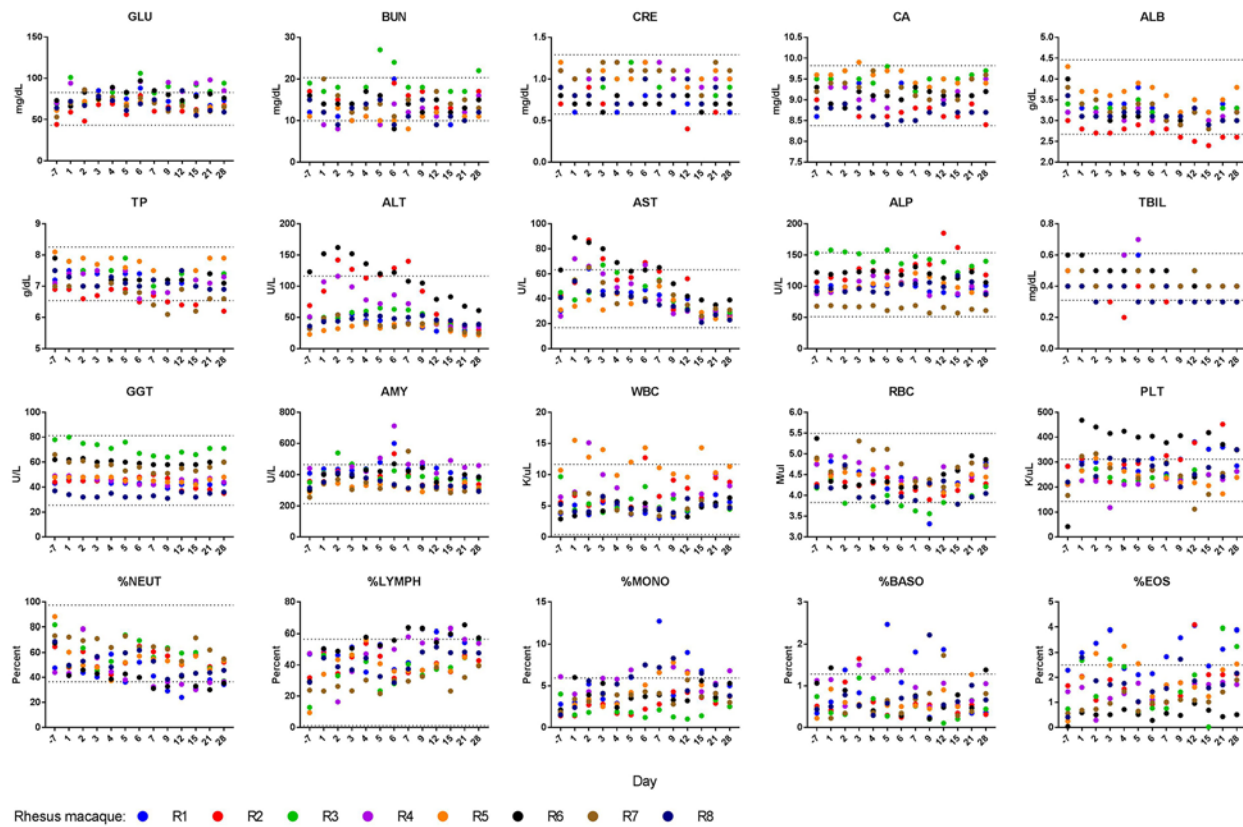
## Technical Appendix



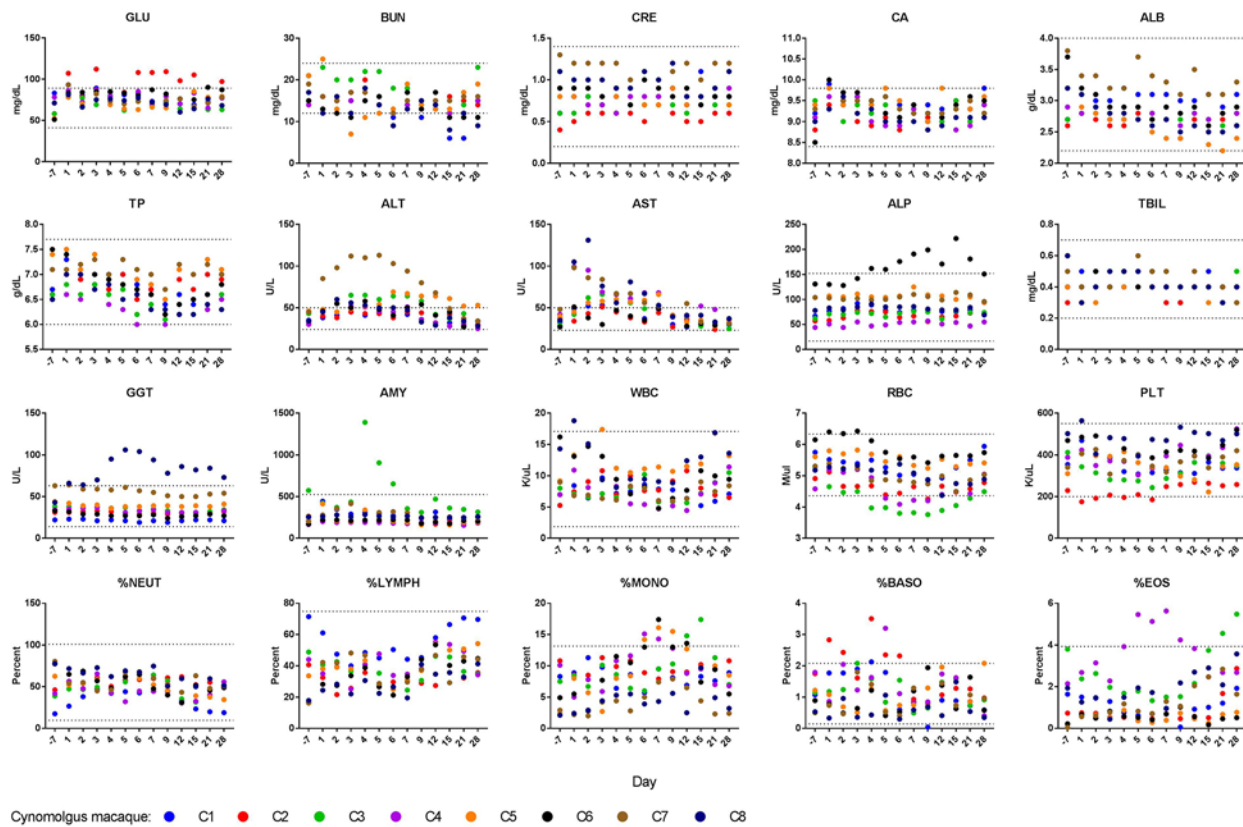
**Technical Appendix Figure 1.** Rectal temperatures of A) rhesus and B) cynomolgus macaques experimentally inoculated intravaginally or intrarectally with Zika virus. Day indicates day postinoculation. C, cynomolgus; R, rhesus.



**Technical Appendix Figure 2.** Weights of A) rhesus and B) cynomolgus macaques experimentally inoculated intravaginally or intrarectally with Zika virus. Day indicates day postinoculation. C, cynomolgus; R, rhesus.



**Technical Appendix Figure 3.** Clinical laboratory values for rhesus macaques experimentally inoculated intravaginally or intrarectally with Zika virus. Dotted lines indicate mean  $\pm$  2 SD of corresponding laboratory value for the 8 animals at day  $-7$ . Day indicates day postinoculation. ALB, albumin; ALP, alkaline phosphatase; AMY, amylase; ALT, alanine aminotransferase; AST, aspartate aminotransferase; BASO, basophils; BUN, blood urea nitrogen; CA, calcium; CRE, C-reactive protein; EOS, eosinophils; GGT,  $\gamma$ -glutamyl transferase; GLU, glucose; LYMPH, lymphocytes; MONO, monocytes; NEUT, neutrophils; PLT, platelets; RBC, red blood cells; TBIL, total bilirubin; TP, total protein; leukocyte, leukocytes.



**Technical Appendix Figure 4.** Clinical laboratory values for cynomolgus macaques experimentally inoculated intravaginally or intrarectally with Zika virus. Dotted lines indicate mean  $\pm$  2 SD of corresponding laboratory value for the 8 animals at day  $-7$ . Day indicates day postinoculation. ALB, albumin; ALP, alkaline phosphatase; AMY, amylase; ALT, alanine aminotransferase; AST, aspartate aminotransferase; BASO, basophils; BUN, blood urea nitrogen; CA, calcium; CRE, C-reactive protein; EOS, eosinophils; GGT,  $\gamma$ -glutamyl transferase; GLU, glucose; LYMPH, lymphocytes; MONO, monocytes; NEUT, neutrophils; PLT, platelets; RBC, red blood cells; TBIL, total bilirubin; TP, total protein; leukocyte, leukocytes.