

Association of GII.P16-GII.2 Recombinant Norovirus Strain with Increased Norovirus Outbreaks, Guangdong, China, 2016

Jing Lu,¹ Ling Fang,¹ Limei Sun, Hanri Zeng, Yanling Li, Huanying Zheng, Siwei Wu, Feng Yang, Tie Song, Jinyan Lin, Changwen Ke, Yonghui Zhang, Jan Vinjé, Hui Li

An unusual prevalence of recombinant GII.2 noroviruses (GII.P16-GII.2) in Guangdong, China, at the end of 2016 caused a sharp increase in outbreaks of acute gastroenteritis. This event was another non-GII.4 epidemic that emerged after the GII.17 viruses in 2014 and 2015 and warrants global surveillance.

During the past 20 years, GII.4 genotypes have been responsible for most norovirus outbreaks globally (1). New GII.4 variants have emerged every 2 or 3 years, replacing the previous dominant variant. Likewise, in Guangdong, China, as well as in other regions of China, GII.4 noroviruses have caused most outbreaks; several other genotypes, such as GI.3, GI.6, GII.6, and GII.21, were occasionally detected in sporadic cases but rarely caused large outbreaks (2).

The Guangdong provincial surveillance network for foodborne disease outbreaks has been active since 2008 and is responsible for the surveillance of norovirus outbreaks in Guangdong. During winter 2014–15, a new GII.17 variant (GII.P17-GII.17 Kawasaki) was first identified in Guangdong and caused a substantial increase in the number of acute gastroenteritis outbreaks (3). Epidemics caused by this lineage were detected almost simultaneously in several other provinces of China, and sporadic cases were reported worldwide (4). We report an increase in the number of outbreaks associated with a GII.P16-GII.2 recombinant norovirus strain in the last months of 2016 in Guangdong.

The Study

In Guangdong, norovirus outbreaks are highly seasonal; most (>90%) are reported during November–March (3). In November 2014, a GII.17 variant was identified in

Guangdong and became predominant during the 2014–15 and 2015–16 norovirus seasons (5). After June 2016, the number of GII.17 outbreaks decreased, replaced by GII.4 outbreaks (Figure 1). During November and December 2016, a sharp increase in the number of norovirus outbreaks was reported in multiple cities of Guangdong through the provincial surveillance network (Figure 1). Seventeen (81%) of the 21 outbreaks in 10 cities were typed as GII.2; these outbreaks resulted in 760 clinical cases (Figure 1). This genotype was first detected in Guangzhou on November 14, 2016, and spread rapidly thereafter. The sharp increase in the number of outbreaks and the unusual GII.2 genotype prompted us to further characterize these viruses.

We randomly selected 5 fecal samples from each GII.2 outbreak for Sanger sequencing. The full length of *RdRp* and *VPI* genes were sequenced by using specific oligonucleotide primer sets (online Technical Appendix Table, <https://wwwnc.cdc.gov/EID/article/23/7/17-0333-Techapp1.pdf>). Representative sequences were deposited in GenBank (accession nos. KY485107–KY485126). A primer set (JV12RY and JV13I [6]) commonly used for *RdRp* typing failed to amplify the corresponding fragments of GII.2/Guangdong/2016 strains because of mismatches with these primers. We compared the Guangdong GII.2 viruses with related *VPI* (GII.2) and *RdRp* gene sequences (P16) from GenBank. Molecular clock phylogenetic analysis was performed to analyze the evolution of the *VPI* gene sequences by using the Bayesian Markov chain Monte Carlo framework with a generalized time-reversible nucleotide substitution model (7) and an uncorrelated lognormal relaxed clock model (8) (Figure 2). Most GII.2 sequences before 2004 uploaded to GenBank were from Japan, the United States, and the Netherlands (online Technical Appendix Figure 1). GII.2 strains detected after 2004 clustered into a major lineage that included the viruses detected in Guangdong in 2016. This lineage, which also included the GII.2 viruses reported in Germany (9), was estimated to have emerged during 2011–2014 (95% highest posterior density 2011.7–2014.5) and was divergent from GII.2 strains detected in Japan in 2014. The genetically closest *VPI* gene sequences were GII.2 viruses from the United States in 2011 and from Japan in 2011 and 2012 (Figure 2). Consistent with the tight cluster of the capsid sequences, the

Author affiliations: Guangdong Provincial Center for Disease Control and Prevention, Guangzhou, China (J. Lu, L. Fang, L. Sun, H. Zeng, Y. Li, H. Zheng, S. Wu, F. Yang, T. Song, J. Lin, C. Ke, Y. Zhang, H. Li); Centers for Disease Control and Prevention, Atlanta, Georgia, USA (J. Vinjé)

DOI: <https://dx.doi.org/10.3201/eid2307.170333>

¹These authors contributed equally to this article.

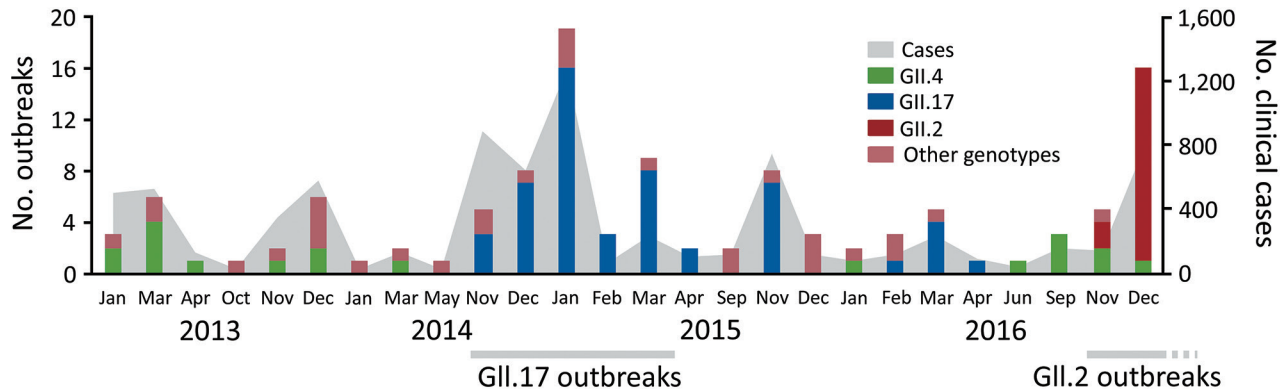


Figure 1. Number of reported GII norovirus outbreaks and confirmed clinical cases, Guangdong, China, January–December 2016.

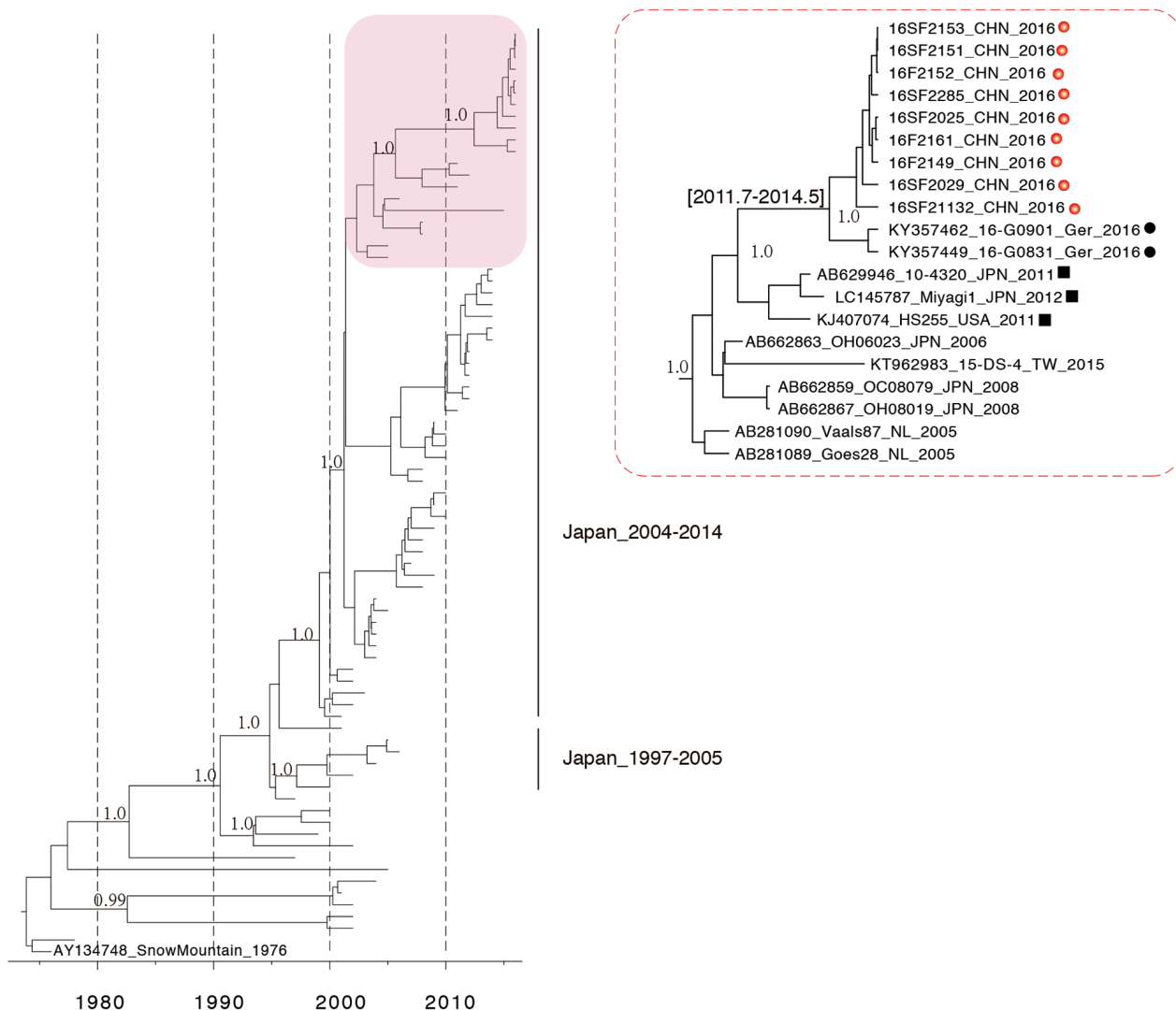


Figure 2. Molecular clock phylogeny of norovirus strain GII.2 VP1 gene sequences. The tree is a maximum clade credibility phylogeny with the GII.2 VP1 sequences, including the Guangdong, China, outbreak strains (red box, enlarged at right). Red dots indicate GII.2/ Guangdong/2016 strains; black dots indicate outbreak strains from Germany, 2016; black squares indicate closely related GII.2 strains reported in previous years.

GII.P16 *RdRp* gene sequences of the Guangdong and Germany outbreaks were closely related with GII.P16 sequences from GII.4 Sydney viruses detected in Japan and the United States (online Technical Appendix Figure 2).

Conclusions

We report an increased number of norovirus GII.2 outbreaks during fall 2016 in Guangdong Province, China. The provincial surveillance network reported 17 GII.2 norovirus outbreaks that affected 760 persons during November 14–December 28, 2016. On the basis of complete viral polymerase gene (*RdRp*) and capsid gene (*VPI*) nucleotide sequences, all viruses could be typed as GII.P16-GII.2.

The driving force behind the emergence and spread of GII.2 noroviruses in Guangdong Province is not clear, but the fact that all viruses had a GII.P16 *RdRp* gene might indicate that possession of this polymerase gene makes these viruses more virulent. Similar GII.P16 *RdRp* genes have been reported as part of GII.4 Sydney viruses recently identified in Japan (GenBank accession no. LC153122, GII.P16-GII.4/JP/2016) (10) and the United States (GenBank accession no. KX907727, GII.P16-GII.4/U.S./2015) (online Technical Appendix Figure 1), which suggests that recent recombination events of GII.2 and GII.4 Sydney viruses with GII.P16 *RdRp* gene sequences might have been responsible for most of the recent norovirus activity.

The number of GII.P16-GII.2 outbreaks peaked at the end of 2016, similar to the epidemic season caused by the GII.P17-GII.17 variant in 2014. The emergence of GII.2 viruses was almost simultaneously reported in several other regions of China (China National Surveillance Network for Foodborne Disease Outbreaks, February 2017) as well as in Germany (9), suggesting the fast spread of this genotype on multiple continents. As a result, the predominant norovirus genotype in Guangdong Province has changed from GII.4 viruses, of which a new variant emerged every 2 or 3 years, to non-GII.4 viruses with GII.17 during the 2014–15 winter season and GII.2 viruses during the 2016–17 season. Since the GII.17 variant has spread to several countries in Asia and has been reported on different continents, the effect of this emerging GII.2 recombinant strain warrants further global surveillance.

Acknowledgment

We gratefully acknowledge the efforts of local Center for Disease Control and Prevention offices in the investigation and reporting of these outbreaks.

This work was supported by grants from the National Natural Science Foundation of China (81501754) and the Science and Technology Planning Project of Guangdong Province (2015A030401042).

Dr. Lu is a virologist in Guangdong Provincial Institution of Public Health, Guangdong Provincial Center for Disease Control and Prevention. His research interests include evolution and transmission of viruses.

References

- van Beek J, Ambert-Balay K, Botteldoorn N, Eden JS, Fonager J, Hewitt J, et al. Indications for worldwide increased norovirus activity associated with emergence of a new variant of genotype II.4, late 2012. *Euro Surveill.* 2013;18:8–9.
- Siebenga JJ, Vennema H, Renckens B, de Bruin E, van der Veer B, Siezen RJ, et al. Epochal evolution of GGII.4 norovirus capsid proteins from 1995 to 2006. *J Virol.* 2007;81:9932–41. <http://dx.doi.org/10.1128/JVI.00674-07>
- Lu J, Sun L, Fang L, Yang F, Mo Y, Lao J, et al. Gastroenteritis outbreaks caused by norovirus GII.17, Guangdong Province, China, 2014–2015. *Emerg Infect Dis.* 2015;21:1240–2. <http://dx.doi.org/10.3201/eid2107.150226>
- de Graaf M, van Beek J, Vennema H, Podkolzin AT, Hewitt J, Bucardo F, et al. Emergence of a novel GII.17 norovirus—end of the GII.4 era? *Euro Surveill.* 2015;20:pii:21178.
- Lu J, Fang L, Zheng H, Lao J, Yang F, Sun L, et al. The evolution and transmission of epidemic GII.17 noroviruses. *J Infect Dis.* 2016;214:556–64. <http://dx.doi.org/10.1093/infdis/jiw208>
- Vennema H, de Bruin E, Koopmans M. Rational optimization of generic primers used for Norwalk-like virus detection by reverse transcriptase polymerase chain reaction. *J Clin Virol.* 2002;25:233–5.
- Shapiro B, Rambaut A, Drummond AJ. Choosing appropriate substitution models for the phylogenetic analysis of protein-coding sequences. *Mol Biol Evol.* 2006;23:7–9. <http://dx.doi.org/10.1093/molbev/msj021>
- Drummond AJ, Ho SY, Phillips MJ, Rambaut A. Relaxed phylogenetics and dating with confidence. *PLoS Biol.* 2006;4:e88. <http://dx.doi.org/10.1371/journal.pbio.0040088>
- Niendorf S, Jacobsen S, Faber M, Eis-Hubinger AM, Hofmann J, Zimmermann O, et al. Steep rise in norovirus cases and emergence of a new recombinant strain GII.P16-GII.2, Germany, winter 2016. *Euro Surveill.* 2017;22:pii:30447.
- Matsushima Y, Shimizu T, Ishikawa M, Komane A, Okabe N, Ryo A, et al. Complete genome sequence of a recombinant GII.P16-GII.4 norovirus detected in Kawasaki City, Japan, in 2016. *Genome Announc.* 2016;4:e01099-16. <http://dx.doi.org/10.1128/genomeA.01099-16>

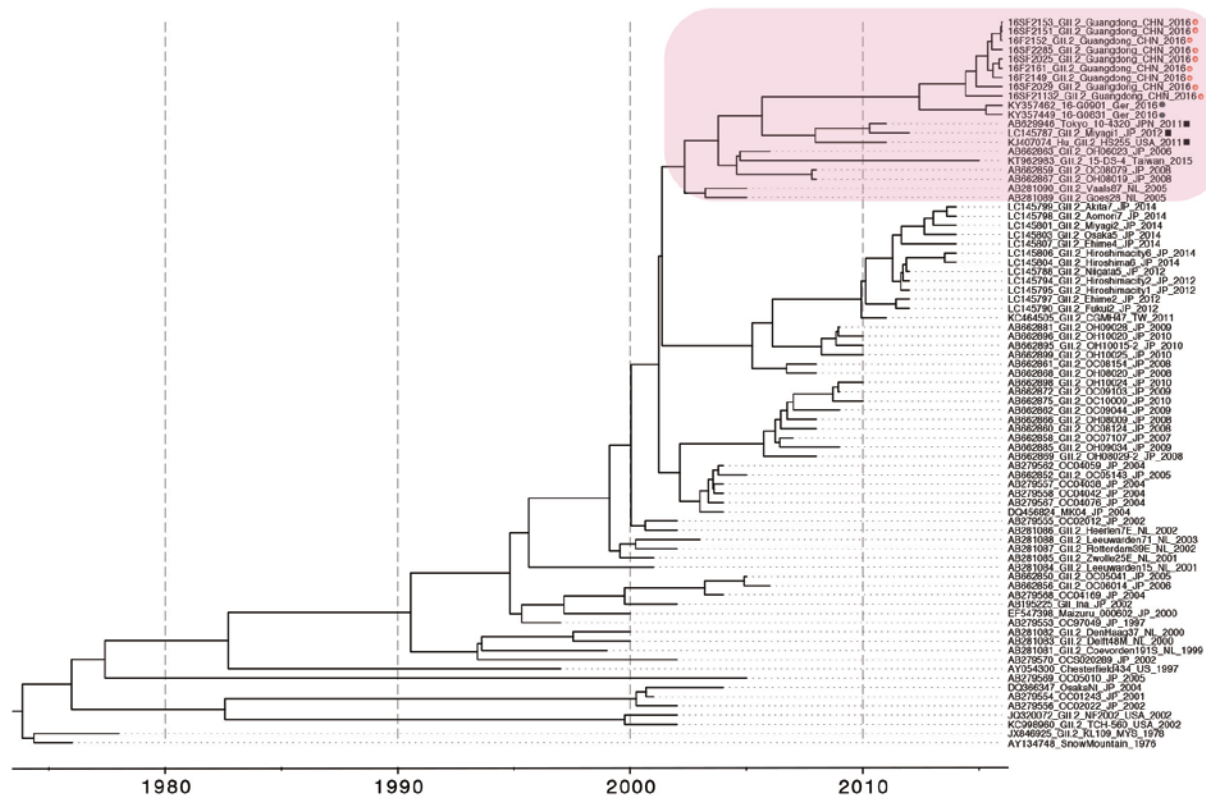
Address for correspondence: Hui Li, Guangdong Provincial Center for Disease Control and Prevention, No. 160, Qunxian Rd, Dashi Town, Panyu District, Guangzhou City, Guangdong Province, China; email: gdcclihui@163.com

Association of GII.P16-GII.2 Recombinant Norovirus Strain with Increased Norovirus Outbreaks, Guangdong, China, 2016

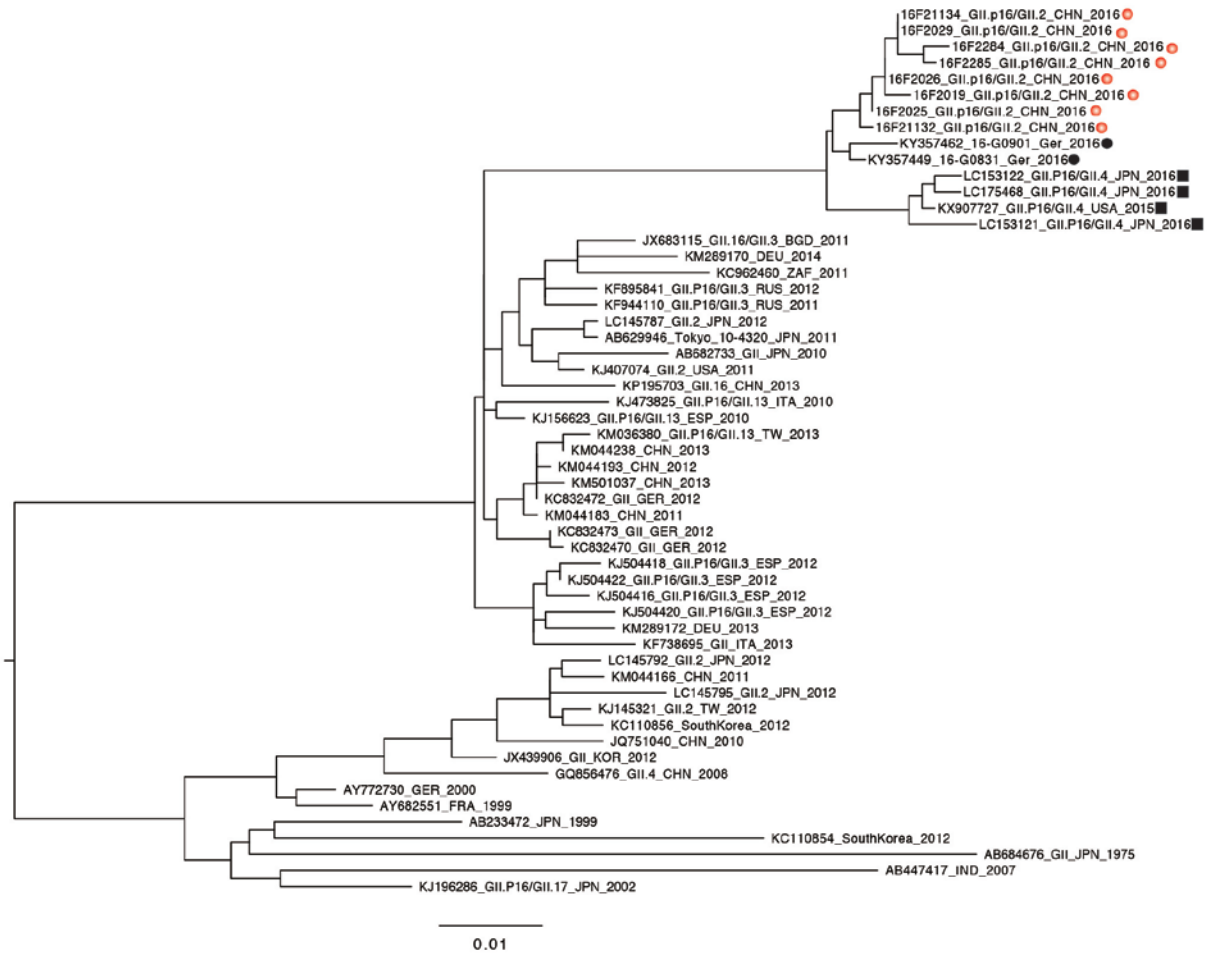
Technical Appendix

Technical Appendix Table. Primer sets used to amplify and sequence norovirus *RdRp* and *VP1* genes, Guangdong, China, 2016

Primer	Sequences (5'→3')
NV_P16_RdRp-forward	YCTTCTRCGCCATTYC
NV_P16_RdRp-reverse	YCTTCTRCGCCATTYC
GII.2_VP1_1-forward	GAATGAAGATGGCGTCGAATG
GII.2_VP1_1- reverse	TTRAAWGCRCAAATRCCACTRAC
GII.2_VP1_2-forward	TCYAATTCHAGRTTYCCAGTG
GII.2_VP1_2-rReverse	YCTTCTRCGCCATTYC



Technical Appendix Figure 1. Molecular clock phylogeny of norovirus GII.2 VP1 gene sequences with GenBank accession numbers and regions. Red box indicates GII.2 VP1 sequences, including the Guangdong, China, outbreak strains. Red dots indicate GII.2/Guangdong/2016 strains; black dots indicate outbreak strains from Germany, 2016; black squares indicate closely related GII.2 strains reported in previous years.



Technical Appendix Figure 2. Maximum-likelihood trees for norovirus RdRp gene in RaxML (1) using the generalized time-reversible with γ -distributed rates among sites. Black squares indicate GII.4 viruses with a GII.P16 gene similar to the GII.P16 gene of the GII.2/Guangdong/2016 strains. Scale bar indicates nucleotide substitutions per site.

Reference

1. Stamatakis A. RAxML-VI-HPC: maximum likelihood-based phylogenetic analyses with thousands of taxa and mixed models. *Bioinformatics*. 2006;22:2688–90. **PMID: 16928733**