

# Frequency and Distribution of Rickettsiae, Borreliae, and Ehrlichiae Detected in Human-Parasitizing Ticks, Texas, USA

Elizabeth A. Mitchell, Phillip C. Williamson,  
Peggy M. Billingsley, Janel P. Seals,  
Erin E. Ferguson, Michael S. Allen

To describe the presence and distribution of tickborne bacteria and their vectors in Texas, USA, we screened ticks collected from humans during 2008–2014 for *Rickettsia*, *Borrelia*, and *Ehrlichia* spp. Thirteen tick species were identified, and 23% of ticks carried bacterial DNA from at least 1 of the 3 genera tested.

Ticks are vectors for a variety of microorganisms, many of which are known agents of zoonotic disease. Although much current research is focused on areas where these diseases are common, it is crucial to collect data from areas with fewer diagnoses of tickborne illness. In Texas, USA, tickborne diseases caused by *Rickettsia*, *Borrelia*, and *Ehrlichia* bacteria are diagnosed less frequently than in some areas of the United States (1); however, those agents have been documented to occur (2), and many medically relevant tick species, capable of carrying and transmitting these pathogens, are established in various geographic areas of Texas (1). Long-term surveillance data encompassing consecutive seasons and a wide geographic range are necessary to ascertain disease transmission risks associated temporally or geographically with established or emerging tickborne pathogens and their vectors. The University of North Texas Health Science Center Tick-Borne Disease Research Laboratory (UNTHSC-TBDL), the primary tick-testing facility for Texas Department of State Health Services Zoonosis Control (TX DSHS), receives ticks continually throughout the year. The data collected from this testing provide an assessment of the prevalence of tick species and associated tickborne bacterial agents collected in Texas.

## The Study

From October 1, 2008, through September 30, 2014, ticks removed from humans were sent by TX DSHS to

Author affiliations: University of North Texas Health Science Center, Fort Worth, Texas, USA (E.A. Mitchell, P.C. Williamson, P.M. Billingsley, J.P. Seals, E.E. Ferguson, M.S. Allen); Creative Testing Solutions, Tempe, Arizona, USA (P.C. Williamson); University of Utah, Salt Lake City, Utah, USA (P.M. Billingsley)

DOI: <http://dx.doi.org/10.3201/eid2202.150469>

UNTHSC-TBDL, where they were tested by using PCR-based methods, then underwent by DNA sequence analysis to determine the presence of *Rickettsia*, *Borrelia*, and *Ehrlichia* spp. Morphologic identification of tick species was implemented by entomologists at TX DSHS. Ticks that could not be classified morphologically were identified at UNTHSC-TBDL by sequencing mitochondrial 16S rDNA (data not shown).

Each tick was sent to UNTHSC-TBDL in an individual collection tube. Upon arrival, ticks were processed according to the laboratory's standard protocol, as described by Williamson et al. (2). After bead pulverization, we extracted DNA using the E.Z.N.A. Mollusc DNA Isolation Kit (Omega Bio-Tek, Norcross, GA, USA) following the manufacturer's protocol.

DNA from each specimen was screened in duplicate by PCR for *Rickettsia*, *Borrelia*, and *Ehrlichia* spp. as previously described (2) by using primers listed in Table 1. PCR products were evaluated, and presumptive-positive amplicons were purified for sequencing (2). Cycle sequencing reactions were performed in both directions by using Big-Dye Terminator version 3.1 chemistry (Life Technologies, Carlsbad, CA, USA). Dideoxy chain termination products were detected electrophoretically on an ABI 310 or 3130xL Genetic Analyzer (Life Technologies). Sequence analysis was performed by using Sequencher version 4.8/5.0 (GeneCodes, Ann Arbor, MI, USA). Analyzed sequences were compared with reference data in GenBank (<http://blast.ncbi.nlm.nih.gov/>). Sequences were submitted to GenBank under accession nos. KP861333–KP861347.

The TX DSHS submitted 1,112 ticks to UNTHSC-TBDL during October 1, 2008–September 30, 2014, of which 1,062 originated in Texas. Thirteen tick species were identified; most were *Amblyomma americanum* (55.7%), followed by *Dermacentor variabilis* (15.0%), *Rhipicephalus sanguineus* (13.0%), *Ixodes scapularis* (5.6%), *A. maculatum* (5.4%), and *A. cajennense* (2.9%). Approximately 23.3% of ticks originating in Texas tested positive for DNA from *Rickettsia*, *Borrelia*, or *Ehrlichia* bacteria (Table 2; online Technical Appendix Table, <http://wwwnc.cdc.gov/EID/article/22/2/15-0469-Techapp1.pdf>). Of these bacteria, most belonged to spotted fever group rickettsiae (SFGR); *A. americanum* was the most common tick species found to carry an SFGR agent. The most frequent SFGR sequences detected demonstrated

**Table 1.** Primers used for screening of human-parasitizing tick specimens, Texas, USA, October 1, 2008–September 30, 2014

| Primer name            | Gene         | Primer sequence, 5' → 3'      | Specificity         | Amplicon, bp | Reference |
|------------------------|--------------|-------------------------------|---------------------|--------------|-----------|
| <i>Borrelia</i> spp.   |              |                               |                     |              |           |
| FlaLL                  | <i>flaB</i>  | ACATATTCAGATGCAGACAGAGGT      | Genus               | 664          | (3)       |
| FlaRL                  | <i>flaB</i>  | GCAATCATAGCCATTGCAGATTGT      | Genus               |              | (3)       |
| FlaLS                  | <i>flaB</i>  | AACAGCTGAAGAGCTTGGAAATG       | Genus               | 330          | (3)       |
| FlaRS                  | <i>flaB</i>  | CTTTGATCACTTATCATTCTAATAGC    | Genus               |              | (3)       |
| BL-Fla 522F            | <i>flaB</i>  | GGTACATATTCAGATGCAGACAGAGGG   | <i>B. lonestari</i> | 660          | (2)       |
| BL-Fla 1182R           | <i>flaB</i>  | GCACTTGATTTGCTTGTGCAATCATAGCC | <i>B. lonestari</i> |              | (2)       |
| BL-Fla 662F            | <i>flaB</i>  | CTGAAGAGCTTGGAAATGCAACCTGC    | <i>B. lonestari</i> | 198          | (2)       |
| BL-Fla 860R            | <i>flaB</i>  | GAGCTAATCCACCTTGAGCTGG        | <i>B. lonestari</i> |              | (2)       |
| BL-16S 227F            | 16S          | TCACACTGGAAGCTGAGATACGGTCC    | Genus               | 693          | (2)       |
| BL-16S 920R            | 16S          | GAATTAACCACATGCTCCACCGC       | Genus               |              | (2)       |
| <i>Rickettsia</i> spp. |              |                               |                     |              |           |
| Rr.190 70P             | <i>rompA</i> | ATGGCGAATATTTCTCCAAA          | Genus               | 532          | (4)       |
| Rr.190 602N            | <i>rompA</i> | AGTGCAGCATTGCTCCCCCT          | Genus               |              | (4)       |
| BG1–21                 | <i>rompB</i> | GGCAATTAATATCGCTGACGG         | Genus               | 650          | (5)       |
| BG2–20                 | <i>rompB</i> | GCATCTGCACTAGCACTTTC          | Genus               |              | (5)       |
| <i>Ehrlichia</i> spp.  |              |                               |                     |              |           |
| Ehr DSB 330F           | <i>dsb</i>   | GATGATGTCTGAAGATATGAAACAAAT   | Genus               | 398          | (6)       |
| Ehr DSB 728R           | <i>dsb</i>   | CTGCTCGTCTATTTACTTCTTAAAGT    | Genus               |              | (6)       |
| Ehr map1F              | <i>map1</i>  | ATTTTTACCTGGTGTGTCCTTTTCTGA   | Genus               | 873          | (7)       |
| Ehr map1R              | <i>map1</i>  | CCTTCCTCCAATTTCTATAACC        | Genus               |              | (7)       |
| Ehr Pmap2F             | <i>map1</i>  | GACACCAAGGCAGTATACGG          | Genus               |              | (7)       |
| Ehr Pmap2R             | <i>map1</i>  | CTAAGTCAGTACCAATACCTGCAC      | Genus               |              | (7)       |
| Tick DNA               |              |                               |                     |              |           |
| 16S-1                  | mt16S        | CCGGTCTGAACTCAGATCAAG         | Unknown             | 300          | (8)       |
| 16S+2                  | mt16S        | TTGGGCAAGAAGACCCTATGAA        | Unknown             |              | (8)       |

100% identity to *Candidatus* Rickettsia amblyommii *rompA* (GenBank accession no. EF194096). *Candidatus* R. amblyommii was detected in both *A. americanum* and *A. cajennense* ticks and showed prevalence rates of 30.3% and 32.3%, respectively. The second most common SFGR *rompA* sequences were 100% homologous to the previously termed rickettsial *I. scapularis* endosymbiont, which has been officially named *R. buchneri* (accession no. KP172259) (9). Five *A. maculatum* specimens contained DNA sequences identical to *R. parkeri rompA* (accession no. KC003476). Sequences that shared 100% similarity to 1 specific *R. rhipicephali* isolate (accession no. U43803) and 99% similarity to other *R. rhipicephali rompA* isolates (accession nos. EU109175–EU109178) were obtained from 4 *D. variabilis* ticks. Sequences isolated from 2 *D. andersoni* ticks were identical to *R. peacockii rompA* and *rompB* (accession nos. FM883671 and

CP001227, respectively). Tick species was confirmed by sequencing mitochondrial 16S rDNA. Sequences from both specimens aligned 99% with *D. andersoni* (accession no. EU711343) and 94% with *D. variabilis* (accession no. L34300). *D. andersoni* is not known to inhabit Texas (1,10), so this finding could suggest a novel geographic association.

The total prevalence of borreliae detected was 1.1%. DNA sequences sharing 100% identity to *B. lonestari* were found in 8 *A. americanum* ticks (1.4%). As seen by Stromdahl et al., the *B. lonestari* isolates matching sequences in this study depended on the insertion or deletion of a nucleotide triplet, AAG (11). Sequences from 7 tick samples matched 100% with *B. lonestari flaB* isolates containing the additional triplet (accession no. AY850063), and 1 sequence was identical to *B. lonestari flaB* isolates lacking the triplet (accession no. AY850064). Of the 8 *A. americanum*

**Table 2.** Number of positive bacterial DNA sequences identified for each human-parasitizing tick species, Texas, USA, October 1, 2008–September 30, 2014\*

| Tick                            | UNID | No. positive       |                  |                    |             |                   |                  |                     |                 |
|---------------------------------|------|--------------------|------------------|--------------------|-------------|-------------------|------------------|---------------------|-----------------|
|                                 |      | <i>Borrelia</i>    |                  | <i>Ehrlichia</i>   |             | <i>Rickettsia</i> |                  |                     |                 |
|                                 |      | <i>burgdorferi</i> | <i>lonestari</i> | <i>chaffeensis</i> | amblyommii† | <i>parkeri</i>    | <i>peacockii</i> | <i>rhipicephali</i> | <i>buchneri</i> |
| <i>Amblyomma americanum</i>     | 0    | 0                  | 8                | 2                  | 179         | 0                 | 0                | 0                   | 0               |
| <i>A. cajennense</i>            | 0    | 0                  | 0                | 0                  | 10          | 0                 | 0                | 0                   | 0               |
| <i>A. maculatum</i>             | 2    | 0                  | 0                | 0                  | 0           | 5                 | 0                | 0                   | 0               |
| <i>Dermacentor variabilis</i>   | 1    | 0                  | 0                | 0                  | 0           | 0                 | 0                | 4                   | 0               |
| <i>D. andersoni</i>             | 0    | 0                  | 0                | 0                  | 0           | 0                 | 2                | 0                   | 0               |
| <i>Ixodes scapularis</i>        | 0    | 1                  | 0                | 0                  | 0           | 0                 | 0                | 0                   | 44              |
| <i>Rhipicephalus sanguineus</i> | 0    | 0                  | 0                | 0                  | 0           | 0                 | 0                | 0                   | 0               |
| Total                           | 3    | 1                  | 8                | 2                  | 189         | 5                 | 2                | 4                   | 44              |

\*Only tick species originating in Texas that tested positive for *Borrelia*, *Ehrlichia*, or *Rickettsia* spp. by DNA sequence analysis are shown. Additionally, 2 *A. maculatum* ticks from Texas were positive for Panola Mountain *Ehrlichia*. UNID, unidentified species.

†*Candidatus* species.

ticks from which the *B. lonestari* sequences were obtained, 6 were co-infected with *Candidatus R. amblyommii*. DNA extracts from 1 *I. scapularis* tick contained a sequence consistent with *B. burgdorferi* sensu stricto (s.s.) and was co-infected with *R. buchneri*. The *flaB* sequence matched 100% to (accession no. CP002228), and 99% to (accession no. CP009656) *B. burgdorferi* s.s. reference sequences. The *Borrelia* 16S rDNA sequence showed 100% identity to (accession no. CP009656) and differed by 1 single nucleotide polymorphism from (accession no. CP002228) *B. burgdorferi* s.s. reference sequences. A *flaB* gene sequence from 1 *D. variabilis* tick shared 100% identity with *Candidatus B. texasensis* (accession no. AF264901). Samples from 2 *A. maculatum* ticks showed *flaB* sequences matching 90% identity values to *B. turcica* (accession no. AB109243), a reptilian *Borrelia* sp. Those *flaB* sequences were identical to a novel *Borrelia* sp. (accession no. KF395230) previously found in *A. maculatum* ticks in Mississippi and known to share a phylogenetic clade with *B. turcica* (12). *Borrelia* 16S rDNA primers produced nonspecific amplification with these 2 samples.

Phylogenetic analysis was performed by using MEGA version 5.1 (<http://www.megasoftware.net>) using GenBank reference sequences to examine relationships between the *Borrelia* sp. from this study, *B. turcica*, and both Lyme disease-associated and relapsing fever borreliae (Figure). The results supported findings by Lee et al. that the novel *Borrelia* sp. *flaB* sequences were more closely related to the reptilian *Borrelia* than the other 2 *Borrelia* groups (12).

Two *A. americanum* ticks contained DNA sharing 100% identity with *Ehrlichia chaffeensis dsb* (accession no. CP000236). One of these ticks was co-infected with *Candidatus R. amblyommii*. Prevalence of *E. chaffeensis* in the *A. americanum* specimens tested was 0.34%. In addition, 2 of 42 *A. maculatum* ticks tested for the emerging pathogen

Panola Mountain *Ehrlichia* sp. (PME) (7) each produced a *map1* sequence that was 100% homologous to 2 separate PME reference sequences (accession nos. EU272356, EU272358). These sequences differed from each other by 1 single nucleotide polymorphism. This finding represents a novel association, as *A. americanum* is the known vector for PME (7). A subset of 141 *A. americanum* ticks was also tested for PME, with negative results.

## Conclusions

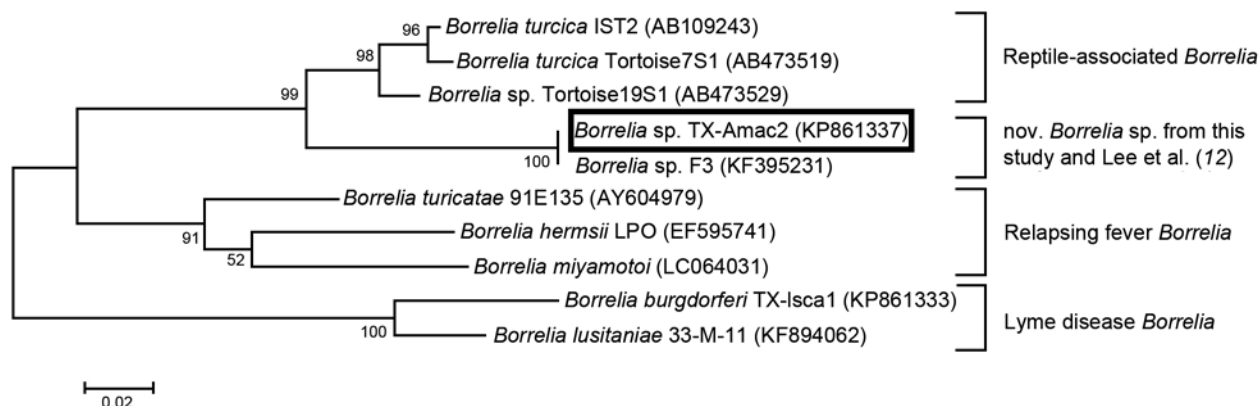
Frequency of tickborne zoonoses in Texas remains low compared with some regions of the United States. We report the detection of known pathogens along with bacteria of unknown pathogenicity in human-parasitizing ticks commonly found in Texas. Our findings underscore the importance of better characterization and continued surveillance of the frequency and distribution of tick species and the bacterial agents they carry. Continued monitoring in low-risk areas provides data regarding the presence of potential emerging pathogens and vectors not yet commonly identified, which could pose unidentified threats to public health.

## Acknowledgments

We thank Rhonda Roby for advice regarding this work. We also thank Bonny Mayes, Jim Schuermann, Dave Florin, and staff at Texas DSHS Zoonosis Control for collection and taxonomic identification of tick samples.

This project was financially supported by the State of Texas.

Ms. Mitchell is a tick-borne disease analyst at the University of North Texas Health Science Center Tick-Borne Disease Research Laboratory in the Center for Biosafety and Biosecurity. Her current research focuses on detection, identification, and characterization of pathogens and potential emerging agents of human disease.



**Figure.** Maximum-likelihood tree showing that the novel *Borrelia* sp. identified in *Amblyomma maculatum* ticks from Texas in this study (box) and from Mississippi (12) shares a closer phylogenetic relationship to *B. turcica* than to other *Borreliae* groups. Analysis is based on *flaB* sequences (267 bp). GenBank accession numbers are shown in parentheses. Tree was constructed using the Tamura 3-parameter model with a bootstrap value of 1,000 replicates. Scale bar indicates substitutions per nucleotide position.

## References

- Centers for Disease Control and Prevention, National Center for Emerging and Zoonotic Infectious Diseases, Division of Vector-Borne Diseases. Geographic distribution of ticks that bite humans [cited 2015 Aug 20]. [http://www.cdc.gov/ticks/geographic\\_distribution.html](http://www.cdc.gov/ticks/geographic_distribution.html)
- Williamson PC, Billingsley PM, Teltow GJ, Seals JP, Turnbough MA, Atkinson SF. *Borrelia*, *Ehrlichia*, and *Rickettsia* spp. in ticks removed from persons, Texas, USA. *Emerg Infect Dis*. 2010;16:441–6. <http://dx.doi.org/10.3201/eid1603.091333>
- Barbour AG, Maupin GO, Teltow GJ, Carter CJ, Piesman J. Identification of an uncultivable *Borrelia* species in the hard tick *Amblyomma americanum*: possible agent of a Lyme disease-like illness. *J Infect Dis*. 1996;173:403–9. <http://dx.doi.org/10.1093/infdis/173.2.403>
- Regnery RL, Spruill CL, Plikaytis BD. Genotypic identification of rickettsiae and estimation of intraspecific sequence divergence for portions of two rickettsial genes. *J Bacteriol*. 1991;173:1576–89.
- Eremeeva M, Yu X, Raoult D. Differentiation among spotted fever group rickettsiae species by analysis of restriction fragment length polymorphism of PCR-amplified DNA. *J Clin Microbiol*. 1994;32:803–10.
- Doyle CK, Labruna MB, Breitschwerdt EB, Tang YW, Corstvet RE, Hegarty BC, et al. Detection of medically important *Ehrlichia* by quantitative multicolor TaqMan real-time polymerase chain reaction of the *dsb* gene. *J Mol Diagn*. 2005;7:504–10. [http://dx.doi.org/10.1016/S1525-1578\(10\)60581-8](http://dx.doi.org/10.1016/S1525-1578(10)60581-8)
- Lofitis AD, Mixson TR, Stromdahl EY, Yabsley MJ, Garrison LE, Williamson PC, et al. Geographic distribution and genetic diversity of the *Ehrlichia* sp. from Panola Mountain in *Amblyomma americanum*. *BMC Infect Dis*. 2008;8:54. <http://dx.doi.org/10.1186/1471-2334-8-54>
- Black WC IV, Piesman J. Phylogeny of hard- and soft-tick taxa (Acari: Ixodida) based on mitochondrial 16S rDNA sequences. *Proc Natl Acad Sci U S A*. 1994;91:10034–8. <http://dx.doi.org/10.1073/pnas.91.21.10034>
- Kurti TJ, Felsheim RF, Burkhardt NY, Oliver JD, Heu CC, Munderloh UG. *Rickettsia buchneri* sp. nov., a rickettsial endosymbiont of the blacklegged tick *Ixodes scapularis*. *Int J Syst Evol Microbiol*. 2015;65:965–70. <http://dx.doi.org/10.1099/ijs.0.000047>
- James AM, Freier JE, Keirans JE, Durden LA, Mertins JW, Schlater JL. Distribution, seasonality, and hosts of the Rocky Mountain wood tick in the United States. *J Med Entomol*. 2006;43:17–24. <http://dx.doi.org/10.1093/jmedent/43.1.17>
- Stromdahl EY, Williamson PC, Kollars TM Jr, Evans SR, Barry RK, Vince MA, et al. Evidence of *Borrelia lonestari* DNA in *Amblyomma americanum* (Acari: Ixodidae) removed from humans. *J Clin Microbiol*. 2003;41:5557–62. <http://dx.doi.org/10.1128/JCM.41.12.5557-5562.2003>
- Lee JK, Smith WC, McIntosh C, Ferrari FG, Moore-Henderson B, Varela-Stokes A. Detection of a *Borrelia* species in questing Gulf Coast ticks, *Amblyomma maculatum*. *Ticks Tick Borne Dis*. 2014;5:449–52. <http://dx.doi.org/10.1016/j.ttbdis.2014.02.004>

Address for correspondence: Michael S. Allen, University of North Texas Health Science Center, Department of Molecular and Medical Genetics, 3500 Camp Bowie Blvd, Fort Worth, TX 76107, USA; email: michael.allen@unthsc.edu

Sign up for Twitter and find the latest information about **emerging infectious diseases** from the EID journal.

 @CDC\_EIDjournal

# Frequency and Distribution of Rickettsiae, Borreliae, and Ehrlichiae Detected in Human-Parasitizing Ticks, Texas, USA

## Technical Appendix

Technical Appendix Table. Summary of number, identity, and bacterial screening results for ticks submitted by Texas Department of State Health Services Zoonosis Control, October 1, 2008–September 30, 2014\*

| Tick                          | No. positive/no. tested |                       |                        | Total          |
|-------------------------------|-------------------------|-----------------------|------------------------|----------------|
|                               | <i>Borrelia</i> spp.    | <i>Ehrlichia</i> spp. | <i>Rickettsia</i> spp. |                |
| <i>Amblyomma americanum</i>   |                         |                       |                        |                |
| Adult female                  | 6/209                   | 1/209                 | 71/209                 | 78/209         |
| Adult male                    | 1/155                   | 1/155                 | 41/155                 | 43/155         |
| Nymph                         | 1/219                   | 0/219                 | 54/219                 | 55/219         |
| Larva                         | 0/8                     | 0/8                   | 0/8                    | 0/8            |
| <i>Amblyomma cajennense</i>   |                         |                       |                        |                |
| Adult female                  | 0/5                     | 0/5                   | 1/5                    | 1/5            |
| Adult male                    | 0/6                     | 0/6                   | 0/6                    | 0/6            |
| Nymph                         | 0/19                    | 0/19                  | 9/19                   | 9/19           |
| Larva                         | 0/1                     | 0/1                   | 0/1                    | 0/1            |
| <i>Amblyomma maculatum</i>    |                         |                       |                        |                |
| Adult female                  | 1/22                    | 0/22                  | 2/22                   | 3/22           |
| Adult male                    | 1/29                    | 2/29                  | 2/29                   | 5/29           |
| Nymph                         | 0/6                     | 0/6                   | 0/6                    | 0/6            |
| Larva                         | 0/0                     | 0/0                   | 0/0                    | 0/0            |
| <i>Dermacentor variabilis</i> |                         |                       |                        |                |
| Adult female                  | 1/90                    | 0/90                  | 2/90                   | 3/90           |
| Adult male                    | 0/63                    | 0/63                  | 2/63                   | 2/63           |
| Nymph                         | 0/4                     | 0/4                   | 0/4                    | 0/4            |
| Larva                         | 0/0                     | 0/0                   | 0/0                    | 0/0            |
| <i>Dermacentor andersoni</i>  |                         |                       |                        |                |
| Adult female                  | 0/2                     | 0/0                   | 2/2                    | 2/2            |
| Adult male                    | 0/0                     | 0/0                   | 0/0                    | 0/0            |
| Nymph                         | 0/0                     | 0/0                   | 0/0                    | 0/0            |
| Larva                         | 0/0                     | 0/0                   | 0/0                    | 0/0            |
| <i>Ixodes scapularis</i>      |                         |                       |                        |                |
| Adult female                  | 1/52                    | 0/52                  | 42/52                  | 43/52          |
| Adult male                    | 0/1                     | 0/1                   | 0/1                    | 0/1            |
| Nymph                         | 0/6                     | 0/6                   | 3/6                    | 3/6            |
| Larva                         | 0/0                     | 0/0                   | 0/0                    | 0/0            |
| <b>Total</b>                  | <b>12/897</b>           | <b>4/897</b>          | <b>231/897</b>         | <b>247/897</b> |

\*Table only includes ticks originating in Texas that tested positive for *Borrelia*, *Ehrlichia*, or *Rickettsia* spp. One hundred thirty-seven *Rhipicephalus sanguineus*, 12 unidentified *Amblyomma* spp., 6 unidentified *Ixodes* spp., 3 *Otobius megnini*, 2 unidentifiable ticks and 1 specimen each of *Amblyomma imitator*, *Amblyomma inornatum*, *Dermacentor albipictus*, *Dermacentor nigrolineatus*, and *Ixodes woodi* were additionally submitted from Texas.