

# *Candidatus* *Coxiella massiliensis* Infection

Emmanouil Angelakis, Oleg Mediannikov,  
Sarah-Lyne Jos, Jean-Michel Berenger,  
Philippe Parola, Didier Raoult

Bacteria genetically related to *Coxiella burnetii* have been found in ticks. Using molecular techniques, we detected *Coxiella*-like bacteria, here named *Candidatus* *Coxiella massiliensis*, in skin biopsy samples and ticks removed from patients with an eschar. This organism may be a common agent of scalp eschar and neck lymphadenopathy after tick bite.

Only 1 species of bacteria in the genus *Coxiella* is officially recognized: *Coxiella burnetii* (1). However, in recent decades, many genetically related bacteria have been found in hard and soft ticks (2). These *Coxiella*-like bacteria genetically cluster with *C. burnetii* and share some degree of identity with these bacteria but not enough to be considered the same species (2,3). Genotypes of *Coxiella*-like bacteria vary among ticks of different species (3); however, bacteria with different genotypes have not been isolated, and whether there is a tick reservoir is not known. *Coxiella*-like bacteria have been associated with infection in birds (4,5). To explore pathogenicity to humans, we used molecular techniques targeting *Coxiella*-like bacteria to retrospectively analyze skin biopsy samples and ticks collected from patients with eschars. We also evaluated serologic tests for *Candidatus* *Coxiella massiliensis* diagnosis.

## The Study

During 2011–2014, we identified patients in hospitals throughout France, who had eschars after tick bite. We retrospectively tested skin biopsy or swab samples of the eschars, serum samples when possible, and ticks from the patients. Ticks were identified by matrix-assisted laser desorption/ionization time-of-flight mass spectrometry (Bruker Daltonics, Billerica, USA) (6). All human samples and ticks were tested for *Rickettsia*, *Borrelia*, *Bartonella*, and *Ehrlichia* spp.; *Francisella tularensis*; *Staphylococcus aureus*; and *Coxiella burnetii* by quantitative PCR (qPCR) (2,7). On the basis of the aligned *rrs* gene sequences of *Coxiella*-like bacteria, we developed a specific qPCR to detect the DNA of all *Coxiella* species and degenerated primers aimed to amplify a 659-bps long portion of the *groEL* gene of *Coxiella* spp. (online Technical Appendix Table 1, <http://wwwnc.cdc.gov/EID/>

[article/22/2/15-0106-Techapp1.pdf](http://wwwnc.cdc.gov/EID/article/22/2/15-0106-Techapp1.pdf)). Skin biopsy samples were also tested by universal eubacteria 16S rRNA gene amplification and sequencing (7).

Five spawns of *Rhipicephalus sanguineus* ticks infected with *Candidatus* *C. massiliensis* were used for antigen production (8). Molecular assays indicated that these spawns were negative for *Rickettsia*, *Borrelia*, *Bartonella*, *Ehrlichia* spp.; *F. tularensis*; *S. aureus*; and *C. burnetii*. We used spawns of *R. sanguineus* ticks without *Candidatus* *C. massiliensis* infection as negative controls to confirm that their antigens did not react with serum from the patients. To confirm the presence of *Candidatus* *C. massiliensis*, we used qPCR and transmission electron microscopy to visualize the bacteria (online Technical Appendix Figure). To determine the specificity of our immunofluorescence assay (IFA), we used healthy blood donors as negative controls; to determine if there was cross-reactivity with *C. burnetii*, we used serum from patients with Q fever.

Patients were considered infected with *Coxiella*-like bacteria when a skin biopsy sample was positive by qPCR and there was no evidence of infection with another agent. Patients were considered possibly infected if they had clinical signs (fever, skin eschar, local lymph node enlargement) and if a removed tick was positive for *Coxiella*-like bacteria according to qPCR but no skin biopsy was sampled or when serologic results were positive. For data comparison, we used Epi Info 6.0 ([https://wwwn.cdc.gov/epiinfo/html/ei6\\_downloads.htm](https://wwwn.cdc.gov/epiinfo/html/ei6_downloads.htm)). We considered a p value of 0.05 to be significant.

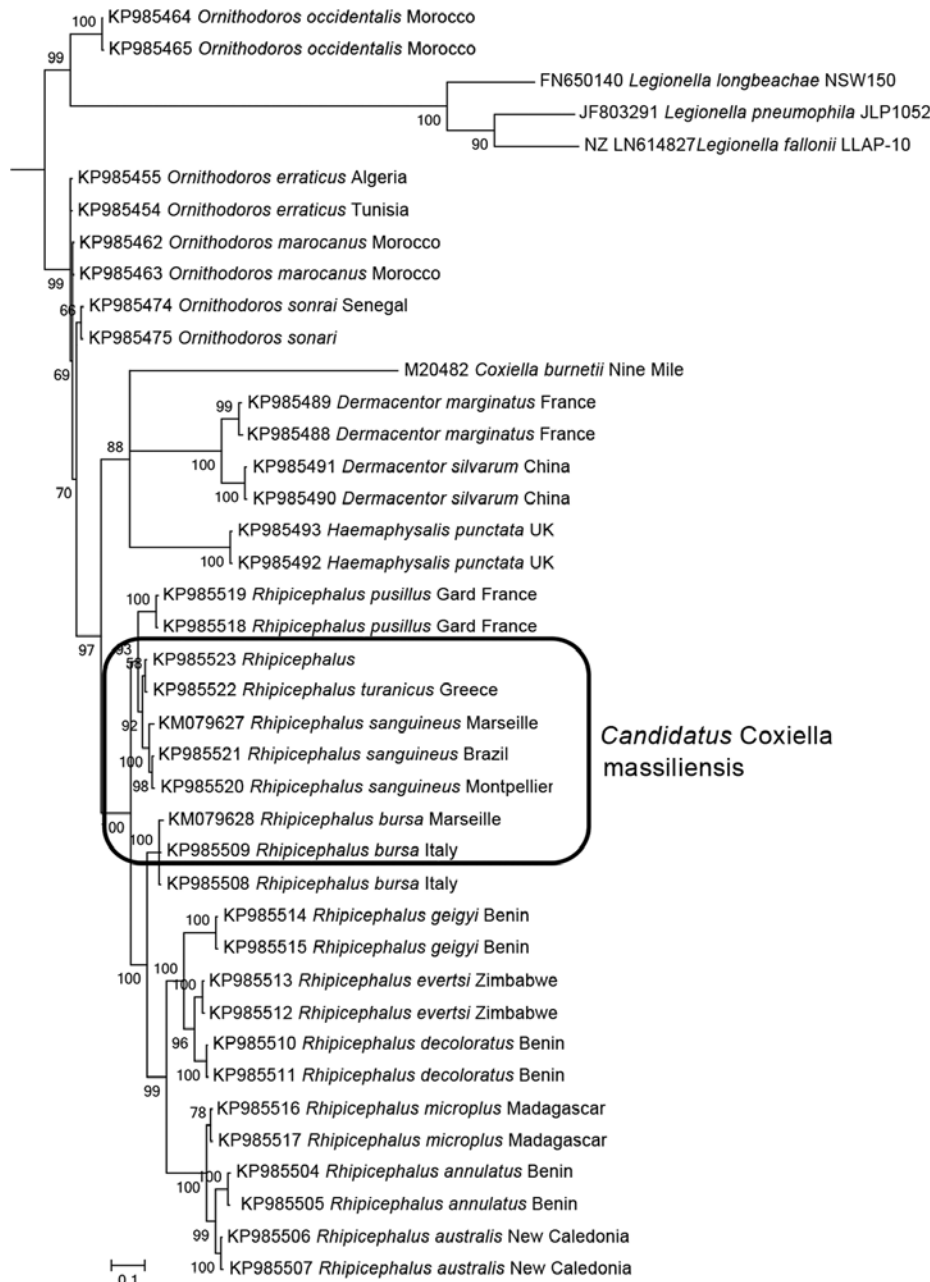
Phylogenetic analysis based on *groEL* confirmed that *Coxiella* spp. from ticks of different species are genetically very distant (9). On the basis of phylogenetic clustering, epidemiologic role, and the fact that we used its antigens for the diagnostic of human infection, we propose the name for the *Coxiella*-like bacteria associated with *R. sanguineus*, *R. turanicus*, and *H. pusillus* ticks to be *Candidatus* *C. massiliensis* (Figure 1).

A total of 57 ticks removed from 55 patients were available for testing. Of these, 20 (35%) ticks from 19 patients were infected with *Coxiella*-like bacteria only: 11 (55%) *Dermacentor marginatus*, 7 (35%) *R. sanguineus*, 1 (5%) *R. bursa*, and 1 (5%) *Ixodes ricinus* ticks. *Coxiella*-like bacteria were found significantly less commonly in *I. ricinus* ticks ( $p = 0.002$ , relative risk = 0.5).

We tested convalescent-phase serum from 5 patients. Total immunoglobulin titers of 1:400 against *Candidatus* *C. massiliensis* were detected for 1 patient and >1:800 for 2 patients (Figure 2). All IgG titers obtained were identical. These results indicated an infection caused by *Candidatus*

Author affiliation: Aix Marseille Université, Marseille, France

DOI: <http://dx.doi.org/10.3201/eid2202.150106>

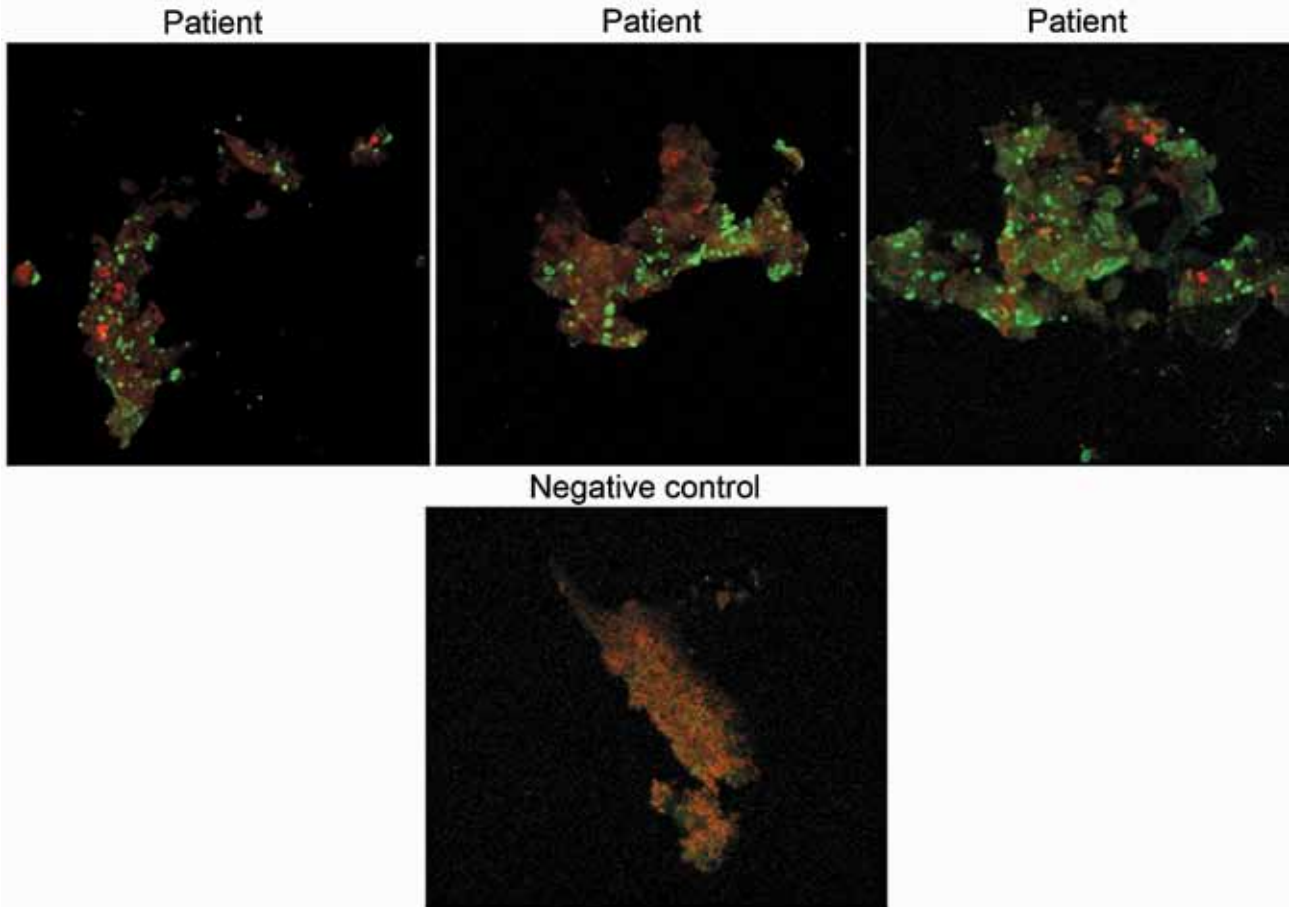


**Figure 1.** Phylogenetic tree based on *GroEL* sequences including *Coxiella*-like strains of bacteria from ticks, *Coxiella burnetii* reference strains, and bacterial outgroups. *GroEL* gene sequences (online Technical Appendix Table 2, <http://wwwnc.cdc.gov/EID/article/22/2/15-0106-Techapp1.pdf>) were aligned by using ClustalW (<http://www.ebi.ac.uk/Tools/msa/>), and phylogenetic inferences were obtained by using Bayesian phylogenetic analysis with TOPALI 2.5 software (<http://www.topali.org/>) and the integrated MrBayes (<http://mrbayes.sourceforge.net/>) application with the HKY+ $\Gamma$  (Hasegawa-Kishino-Yano plus gamma) substitution model for the first and third codons and the JC model for the second codon. GenBank accession numbers are indicated first, followed by the tick host. Numbers at nodes are bootstrap values obtained by repeating the analysis 100 times to generate a majority consensus tree. The final dataset contained 576 positions. Scale bar indicates 10% nucleotide sequence divergence.

*C. massiliensis*. IFA results indicated that all patients were negative for *Rickettsia* spp., *C. burnetii*, *F. tularensis*, and *Bartonella* spp. Among serum samples from 40 blood donors, total immunoglobulins titer was 1:200 for 6 donors and IgG titer was 1:400 for 1. Receiver operating characteristic curves, defined by the true-positive rate (serum from patients infected with *Candidatus C. massiliensis*) as a function of the false-positive rate (serum from blood donors) demonstrated that for a total immunoglobulin cutoff of >1:400, sensitivity was 60% and specificity was 100%, and for an IgG cutoff of >1:400, sensitivity was 60% and specificity was 98%. Moreover, among 13 patients with

acute Q fever, 12 with Q fever endocarditis, and 5 who had had Q fever in the past, serum was positive for *Candidatus C. massiliensis*, indicating the cross-reactivity of our IFA with *C. burnetii*.

Of 465 skin biopsy samples from 465 patients, cell culture results (10) were negative for all. However, samples from 8 (2%) patients were positive for *Candidatus C. massiliensis*, and a possible infection was considered for another 7. Of these 15 patients, 8 (53%) were female, 8 had recently participated in outdoor activities in France, and 2 had recently traveled to Algeria and Israel. Three cases occurred during winter, 9 during spring, and 4 during



**Figure 2.** Immunofluorescence assay results of samples from 3 *Candidatus Coxiella massiliensis*-infected patients and 1 noninfected person (negative control). Original magnification  $\times 630$ .

summer. All patients had an eschar, regardless whether they had lymphadenopathy (Table). A scalp eschar with cervical lymphadenopathy was common (40%). Other common findings were fever (40%), increased C-reactive protein (60%), and thrombocytopenia (40%). Most patients received oral doxycycline, 2 with macrolides and 2 with a  $\beta$ -lactam. Symptoms resolved for all patients.

### Conclusions

We determined that *Candidatus C. massiliensis* is an etiologic agent of human infections. For our molecular assay, we routinely included large numbers of negative controls that were processed identically to the test samples. Only *Coxiella*-like bacteria DNA was present in the samples, indicating that these bacteria were the only infectious agents. Supplementary serologic testing was used to confirm the molecular results, and results were validated with samples from blood donors; specificity was good but sensitivity was low. The fact that all serum tested demonstrated IgG only does not eliminate the possibility of previous exposure (patients and blood donors) because these bacteria are

common in ticks (9). Although *Candidatus C. massiliensis* IFA results were cross-reactive with *C. burnetii*, all patients were negative for *C. burnetii*.

A study limitation was that our assays were specific for *Candidatus C. massiliensis* only. In addition, many of the ticks that bit the patients were not available for examination, and the level of serologic cross-reactivity among *Candidatus C. massiliensis* and other *Coxiella*-like bacteria is unknown. Thus, the patients reported here may have been infected not exclusively with *Candidatus C. massiliensis* but also with another *Coxiella* species associated with ticks.

Most patients had a scalp eschar and cervical lymphadenopathy, reminiscent of a recently proposed clinical entity named SENLAT (scalp eschar and neck lymphadenopathy after tick bite) (11). All symptoms arising from *Candidatus C. massiliensis* infection can be easily attributed to other infectious agents transmitted by ticks (12,13) and can easily go unrecognized because of the absence of systematic research on these bacteria and the nonspecific clinical manifestations of diseases caused by them. Most patients in our study were empirically prescribed

**Table.** Characteristics of *Candidatus Coxiella massiliensis*-infected patients, France, 2011–2014

Characteristic	No. (%) cases
Male sex	7 (47)
Tick species collected from patient	
<i>Dermacentor marginatus</i>	6 (55)
<i>Rhipicephalus sanguineus</i>	3 (27)
<i>Ixodes ricinus</i>	1 (9)
<i>Rhipicephalus bursa</i>	1 (9)
Not collected	4
Eschar location	
Scalp	8 (53)
Leg	3 (20)
Shoulder	2 (13)
Back	1 (7)
Ear	1 (7)
Fever	6 (40)
Lymphadenopathy	
Cervical	6 (55)
Axillary	1 (9)
Inguinal	2 (18)
Thrombocytopenia	6 (40)
Increased liver enzyme levels	2 (13)
Increased C-reactive protein level	9 (60)
Treatment	
Doxycycline	11 (73)
Other	4 (27)

doxycycline, the treatment of choice for many tick-transmitted infections (14). We illustrated the value of systematically testing for *Candidatus C. massiliensis* in skin biopsy samples. *Candidatus C. massiliensis* may be a common agent of SENLAT, which may go unrecognized or misdiagnosed as a sign of another tick-transmitted infection.

Dr. Angelakis is a medical microbiologist and researcher at the Unité de Recherche sur les Maladies Infectieuses et Tropicales Emergentes, Centre National de la Recherche Scientifique, Unité Mixte de Recherche 6236, Institut de Recherche pour le Développement, in Marseille. His research interests are zoonotic pathogens.

## References

- Angelakis E, Raoult D. Q fever. *Vet Microbiol.* 2010;140:297–309. <http://dx.doi.org/10.1016/j.vetmic.2009.07.016>
- Mediannikov O, Ivanov L, Nishikawa M, Saito R, Sidelnikov YN, Zdanovskaya NI, et al. Molecular evidence of *Coxiella*-like microorganism harbored by *Haemaphysalis concinnae* ticks in the Russian Far East. *Ann N Y Acad Sci.* 2003;990:226–8. <http://dx.doi.org/10.1111/j.1749-6632.2003.tb07367.x>
- Zhong J. *Coxiella*-like endosymbionts. *Adv Exp Med Biol.* 2012;984:365–79. [http://dx.doi.org/10.1007/978-94-007-4315-1\\_18](http://dx.doi.org/10.1007/978-94-007-4315-1_18)
- Vapniarsky N, Barr BC, Murphy B. Systemic *Coxiella*-like infection with myocarditis and hepatitis in an eclectus parrot (*Eclectus roratus*). *Vet Pathol.* 2012;49:717–22. <http://dx.doi.org/10.1177/0300985811409251>
- Shivaprasad HL, Cadenas MB, Diab SS, Nordhausen R, Bradway D, Crespo R, et al. *Coxiella*-like infection in psittacines and a toucan. *Avian Dis.* 2008;52:426–32. <http://dx.doi.org/10.1637/8192-120707-Reg>
- Yssouf A, Flaudrops C, Drali R, Kernif T, Socolovschi C, Berenger JM, et al. Matrix-assisted laser desorption ionization–time of flight mass spectrometry for rapid identification of tick vectors. *J Clin Microbiol.* 2013;51:522–8. <http://dx.doi.org/10.1128/JCM.02665-12>
- Safont M, Angelakis E, Richet H, Lepidi H, Fournier PE, Drancourt M, et al. Bacterial lymphadenitis at a major referral hospital in France from 2008 to 2012. *J Clin Microbiol.* 2014;52:1161–7. <http://dx.doi.org/10.1128/JCM.03491-13>
- Tissot-Dupont HT, Thirion X, Raoult D. Q fever serology: cutoff determination for microimmunofluorescence. *Clin Diagn Lab Immunol.* 1994;1:189–96.
- Duron O, Noel V, McCoy KD, Bonazzi M, Sidi-Boumedine K, Morel O, et al. The recent evolution of a maternally-inherited endosymbiont of ticks led to the emergence of the Q fever pathogen, *Coxiella burnetii*. *PLoS Pathog.* 2015;11:e1004892. <http://dx.doi.org/10.1371/journal.ppat.1004892>
- Gouriet F, Fenollar F, Patrice JY, Drancourt M, Raoult D. Use of shell-vial cell culture assay for isolation of bacteria from clinical specimens: 13 years of experience. *J Clin Microbiol.* 2005;43:4993–5002. <http://dx.doi.org/10.1128/JCM.43.10.4993-5002.2005>
- Angelakis E, Pulcini C, Waton J, Imbert P, Socolovschi C, Edouard S, et al. Scalp eschar and neck lymphadenopathy caused by *Bartonella henselae* after tick bite. *Clin Infect Dis.* 2010;50:549–51. <http://dx.doi.org/10.1086/650172>
- Parola P, Paddock CD, Raoult D. Tick-borne rickettsioses around the world: emerging diseases challenging old concepts. *Clin Microbiol Rev.* 2005;18:719–56. <http://dx.doi.org/10.1128/CMR.18.4.719-756.2005>
- Merhej V, Angelakis E, Socolovschi C, Raoult D. Genotyping, evolution and epidemiological findings of *Rickettsia* species. *Infect Genet Evol.* 2014;25:122–37. <http://dx.doi.org/10.1016/j.meegid.2014.03.014>
- Murray T, Feder HM Jr. Management of tick bites and early Lyme disease: a survey of Connecticut physicians. *Pediatrics.* 2001;108:1367–70. <http://dx.doi.org/10.1542/peds.108.6.1367>

Address for correspondence: Emmanouil Angelakis, Aix Marseille Université, 27 Blvd Jean Moulin, Marseille 13005, France; email: angelotasmanos@msn.com

Like our podcasts?  
 Sign up to receive email announcements  
 when a new podcast is available.  
[www.cdc.gov/eid/subscribe.htm](http://www.cdc.gov/eid/subscribe.htm)



# Candidatus Coxiella massiliensis Infection

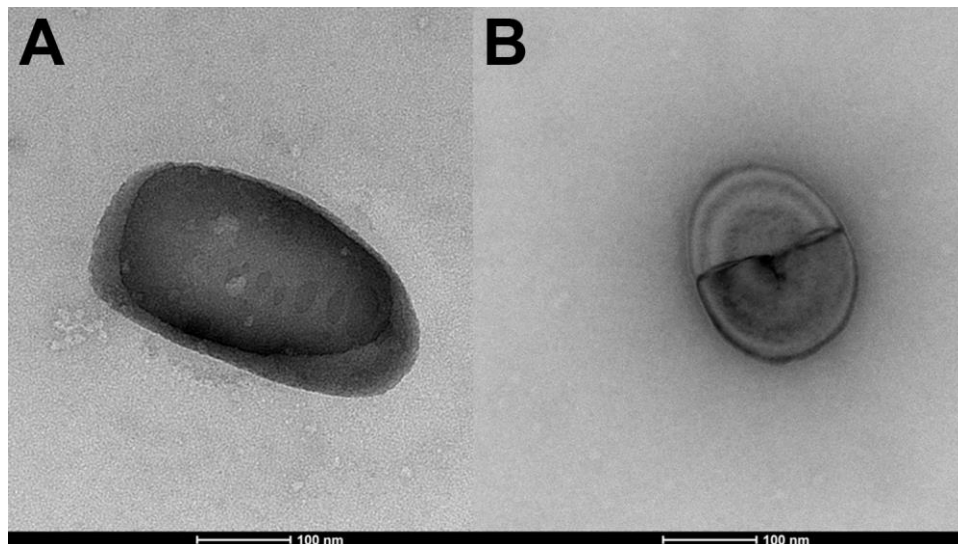
## Technical Appendix

**Technical Appendix Table 1.** Primer and probes sequences used for the detection of *Coxiella*-like bacteria

Primer and probes sequences	Targeted gene	Utilization
Forward: ACCTACCCTTGACATCCTCGGAA	rrs	Identification of <i>Candidatus</i> <i>Coxiella</i> massiliensis and other <i>Coxiella</i> -like bacteria in samples
Reverse: GCAACTAAGGACGAGGGTTG		
Probe: 6FAM-CAGCTCGTGTCTGATGT-TAMRA	groEL	Amplification of chaperonin genes for phylogenetic studies
Forward: 660f GGCGCICARATGGTTAARGA		
Reverse: 1320r AACATCGCTTTACGACGA		

**Technical Appendix Table 2.** GenBank accession numbers of sequences identified during study of *Candidatus* *Coxiella* massiliensis infection

Accession no.	Tick host	Origin	Bacterial gene
<b><i>Candidatus</i> <i>Coxiella</i> massiliensis</b>			
KM079624	<i>Rhipicephalus sanguineus</i>	Laboratory colony in France, originally from Algeria	<i>rrs</i>
KM079625	<i>Rhipicephalus sanguineus</i>	Laboratory colony in France, originally from Algeria	<i>rrs</i>
KM079626	<i>Rhipicephalus turanicus</i>	Laboratory colony in France, originally from France	<i>rrs</i>
KM079627	<i>Rhipicephalus sanguineus</i>	Laboratory colony in France, originally from Algeria	<i>groEL</i>
KM079628	<i>Rhipicephalus bursa</i>	Laboratory colony in France, originally from France	<i>groEL</i>
<b>Other <i>Coxiella</i>-like bacteria from ticks</b>			
KM079617	<i>Amblyomma variegatum</i>	Senegal	<i>rrs</i>
KM079618	<i>Dermacentor silvarum</i>	France	<i>rrs</i>
KM079619	<i>Haemaphysalis concinna</i>	Far Eastern Russia	<i>rrs</i>
KM079620	<i>Haemaphysalis japonica douglasi</i>	Far Eastern Russia	<i>rrs</i>
KM079621	<i>Haemaphysalis japonica douglasi</i>	Far Eastern Russia	<i>rrs</i>
KM079623	<i>Rhipicephalus bursa</i>	Laboratory colony in France, originally from France	<i>rrs</i>



**Technical Appendix Figure.** Transmission electron micrograph of *Candidatus* *Coxiella* massiliensis taken with a Morgagni 268D microscope (Philips, Endhoven, the Netherlands) at an operating voltage of 60 kV. A) Ovoid form. B) Coccoid form.