

Ebola Virus Disease in Children, Sierra Leone, 2014–2015

Felicity Fitzgerald, Asad Naveed, Kevin Wing, Musa Gbessay, J.C.G. Ross, Francesco Checchi, Daniel Youkee, Mohammed Boie Jalloh, David Baion, Ayeshatu Mustapha, Hwanatu Jah, Sandra Lako, Shefali Oza, Sabah Boufkhed, Reynold Feury, Julia A. Bielicki, Diana M. Gibb, Nigel Klein, Foday Sahr, Shunmay Yeung

Medscape **ACTIVITY** EDUCATION

This activity has been planned and implemented through the joint providership of Medscape, LLC and *Emerging Infectious Diseases*. Medscape, LLC is accredited by the American Nurses Credentialing Center (ANCC), the Accreditation Council for Pharmacy Education (ACPE), and the Accreditation Council for Continuing Medical Education (ACCME), to provide continuing education for the healthcare team.

Medscape, LLC designates this Journal-based CME activity for a maximum of 1.00 **AMA PRA Category 1 Credit(s)**[™]. Physicians should claim only the credit commensurate with the extent of their participation in the activity.

All other clinicians completing this activity will be issued a certificate of participation. To participate in this journal CME activity: (1) review the learning objectives and author disclosures; (2) study the education content; (3) take the post-test with a 75% minimum passing score and complete the evaluation at <http://www.medscape.org/journal/eid>; and (4) view/print certificate. For CME questions, see page 1867.

Release date: September 14, 2016; Expiration date: September 14, 2017

Learning Objectives

Upon completion of this activity, participants will be able to:

- Assess mortality for patients with pediatric Ebola virus disease (EVD), based on a retrospective cohort study
- Distinguish morbidity and laboratory findings for patients with pediatric EVD
- Identify characteristics associated with outcomes in patients with pediatric EVD

CME Editor

Karen L. Foster, MA, Technical Writer/Editor, *Emerging Infectious Diseases*. *Disclosure: Karen L. Foster has disclosed no relevant financial relationships.*

CME Author

Laurie Barclay, MD, freelance writer and reviewer, Medscape, LLC. *Disclosure: Laurie Barclay, MD, has disclosed the following relevant financial relationships: owns stock, stock options, or bonds from Pfizer.*

Authors

Disclosures: Felicity Fitzgerald, MBBS, MSc, MRCPCH; Asad Naveed, MBChB; Kevin Wing, PhD; Musa Gbessay, MBChB; J.C.G. Ross, BSc (Hons); Francesco Checchi, PhD; Daniel Youkee, MBBS, MPH; Mohammed Boie Jalloh, MBChB; David Baion, MPed, MBChB; Ayeshatu Mustapha, MBChB; Hwanatu Jah, MBChB; Sandra Lako, MD, DTMH; Shefali Oza, MSc; Sabah Boufkhed, MSc; Reynold Feury, BSc; Nigel Klein, MBBS, MRCP, PhD, FRCPH; Foday Sahr, BSc (Hon), MBChB, MSc, DSc; and Shunmay Yeung, PhD, MBBS, DTM&H, have disclosed no relevant financial relationships. Julia Bielicki, MD, MPH, has disclosed the following relevant financial relationships: other (spouse) is Senior Legal Counsel at Novartis; owns stocks and stock options from Novartis. Diana M. Gibb, MD, has disclosed the following relevant financial relationships: served as an advisor or consultant for ViiV Healthcare Cabotegravir Advisory Committee.

Author affiliations: Save the Children, London, UK (F. Fitzgerald, J.C.G. Ross, F. Checchi); University College of London Great Ormond Street Institute of Child Health, London (F. Fitzgerald, N. Klein); Save the Children, Freetown, Sierra Leone (A. Naveed, M. Gbessay); London School of Hygiene & Tropical Medicine, London (K. Wing, F. Checchi, S. Oza, S. Boufkhed, S. Yeung); Kings Sierra Leone Partnership—Connaught Hospital, Freetown (D. Youkee); Republic of Sierra Leone Armed Forces, Freetown (M.B. Jalloh, F. Sahr); Ola During Children's Hospital—Sierra

Leone Ministry of Health, Freetown (D. Baion, A. Mustapha); Cap Anamur (German Emergency Doctors)—Ola During Children's Hospital, Freetown (H. Jah); Welbodi Partnership—Ola During Children's Hospital, Freetown (S. Lako); Western Area Emergency Response Centre, Freetown (R. Feury); St. George's University of London, London, UK (J.A. Bielicki); MRC Clinical Trials Unit at University College of London, London (J.A. Bielicki, D.M. Gibb)

DOI: <http://dx.doi.org/10.3201/eid2210.160579>

Little is known about potentially modifiable factors in Ebola virus disease in children. We undertook a retrospective cohort study of children <13 years old admitted to 11 Ebola holding units in the Western Area, Sierra Leone, during 2014–2015 to identify factors affecting outcome. Primary outcome was death or discharge after transfer to Ebola treatment centers. All 309 Ebola virus–positive children 2 days–12 years old were included; outcomes were available for 282 (91%). Case-fatality was 57%, and 55% of deaths occurred in Ebola holding units. Blood test results showed hypoglycemia and hepatic/renal dysfunction. Death occurred swiftly (median 3 days after admission) and was associated with younger age and diarrhea. Despite triangulation of information from multiple sources, data availability was limited, and we identified no modifiable factors substantially affecting death. In future Ebola virus disease epidemics, robust, rapid data collection is vital to determine effectiveness of interventions for children.

The Ebola virus disease (EVD) outbreak in West Africa during 2014–2016 comprised ≈28,600 cases and claimed ≈11,300 lives (1). The case-fatality rate (CFR) was high for Ebola virus (EBOV)–infected children <5 years of age (2–4). Outbreak conditions with overstretched health systems and paucity of data has meant there is little understanding of how modifiable clinical management, operational-, and response-specific factors might have affected outcomes of children with EVD (3,5).

During the outbreak, several different health service models for managing suspected EVD cases evolved. In the highly populated Western Area of Sierra Leone, including Freetown, on-site Ebola holding units (EHUs) were set up at health facilities. Their goal was to enable provision of normal healthcare to continue by screening patients before entry (6). Patients fulfilling screening criteria were admitted to the on-site EHUs for EVD testing. Persons testing positive for EBOV were transferred to Ebola treatment centers (ETCs). At the height of the outbreak, laboratory, ambulance, and bed capacities were overwhelmed, leading to substantial delays throughout the pathway, limited provision of clinical care, and long transfer distances (7,8). As the response scaled up, delays shortened and transfer distances decreased as more ETCs opened locally (7,8). These changing health systems factors possibly affected death and are amenable to modification in future outbreaks.

Patient data were collected on paper forms at EHUs and ETCs. Basic demographic and initial symptom information was telephoned to regional control centers for entry into electronic databases and transfer to international nongovernment organizations for epidemiologic surveillance (3,5,9,10). However, data on clinical management and key factors, such as caregiver accompaniment, were not included. Furthermore, communication between

EHUs and ETCs was limited, meaning EHUs had no information about patient outcome after transfer, and data from ETCs were subject to substantial survivorship bias (11–13). Attempts to link clinical management data between sites were limited.

We describe the clinical features, management, and outcomes of children with EVD from initial presentation to final outcome. We also explore risk factors for death, in particular factors amenable to modification.

Methods

Study Population and Setting

All children <13 years of age admitted to 11 EHUs in the Western Area from August 14, 2014, through March 31, 2015, were eligible for inclusion, anticipating that the disease phenotype in adolescents might be similar to that in adults and that some factors (e.g., caregiver accompaniment) were more relevant for younger children (3,14). Patients were screened for EVD symptoms or contact with EBOV on entry to healthcare facilities. Patients whose signs and symptoms fulfilled the World Health Organization definition for a suspected case were admitted to on-site EHUs to have blood taken for EBOV PCR testing (online Technical Appendix Figure, <http://wwwnc.cdc.gov/EID/article/22/10/16-0579-Techapp1.pdf>) (15). Basic demographic data were reported to the Western Area Emergency Response Command Centre (WAERC). Samples were transported to specialist laboratories, which were usually off-site. Patients testing negative for EVD were discharged home or admitted to a routine (non-Ebola) hospital bed (Figure 1) (8). Patients testing positive were transferred to an ETC coordinated by the WAERC. Occasionally, if ETCs were full, a patient might stay at an EHU for the duration of illness and be discharged home directly.

Medical care varied among EHUs according to staffing capabilities and facilities available. The Sierra Leone Ministry of Health recommended that all patients admitted to an EHU receive antimalarial drugs and broad-spectrum antimicrobial therapy (15,16). Until late December 2014, most EHUs abstained from taking blood for tests other than EBOV PCR (WAERC, November 2014, unpub. data). Treatment was primarily supportive; some units operated a no-needle policy, providing only oral rehydration salt (ORS) solution and oral medications. Most units did not allow asymptomatic caregivers to enter an EHU high-risk area (i.e., Red Zone) with their children, because of the potential risk for nosocomial EBOV infection, so many children were admitted alone.

Data Collection

Data stored electronically in the WAERC database included demographics and symptoms at presentation. To obtain more detailed data, we visited 11 EHUs, Ola

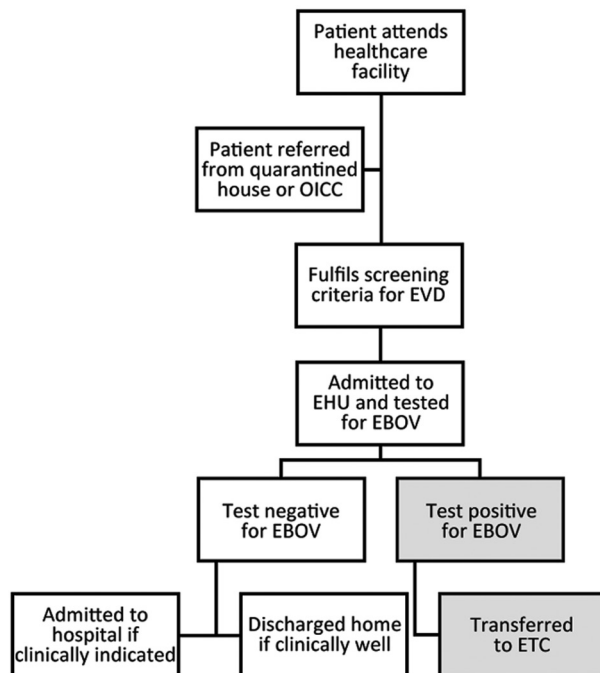


Figure 1. Patient care pathway of EHDs, Western Area (including Freetown), Sierra Leone, August 2014–March 2015. The OICC was set up to care for children with substantial Ebola virus exposure (usually a first-degree relative with confirmed EVD) and without relatives to care for them during the 21-day incubation period. Figure reproduced from (8) (Creative Commons License). EHU, Ebola holding unit; EVD, Ebola virus disease; OICC, observational interim care center.

During Children’s Hospital, and the Western Area ETCs (Figure 2) to extract data from paper records, including demographic data; contact histories; clinical features at and during admission; treatment received; laboratory results; and health system factors, such as duration of transfer to ETC and outcome (death or survival to discharge) (online Technical Appendix Table 1). This information was supplemented by interviews with staff members, in particular about caregiver accompaniment, which was routinely documented only at 1 site. Information about outcomes after discharge was obtained from 2 survivor clinics in the Western Area and telephone calls to guardians. Data were cross-referenced with the WAERC database, test results from regional laboratories, child protection records, districtwide burial records, and the telephone service set up for community ambulance notification (online Technical Appendix Table 1). We developed a scheme to ensure consistency in matching records from different sources (online Technical Appendix). Data were entered directly into a password-protected database (Epi Info version 7.1.4; Centers for Disease Control and Prevention, Atlanta, GA, USA). Personal identifiers were removed before analysis.

Outcome and Potential Risk Factors

Possible outcomes were death (recorded at EHU or ETC) or survival (recorded as discharge from ETC or EHU). We considered variables encoding potential risk factors for outcome, including demographics (age, sex); duration from symptom onset to EHU arrival; symptoms at presentation; receipt of antimicrobial drugs, antimalarial drugs, or intravenous fluids at EHU; specific EHU attended; period in the epidemic (before or on/after January 9, 2015, when bed capacity first outstripped demand in the Western Area [8]); and whether the child was admitted alone, unaccompanied by a caregiver (online Technical Appendix).

We restricted a separate analysis to children transferred to ETCs. Variables were days from EHU admission to ETC transfer, transfer distance, ETC attended, and receipt of medications or intravenous fluids at the ETC. If health information was available for survivors after discharge, it was collected but was not a primary focus of this study.

Sample Size

At study conception in December 2014, we estimated 300 children would have sought care in Western Area EHUs. We aimed to obtain data on all these children (see calculations in online Technical Appendix).

Statistical Analysis and Ethical Considerations

We conducted a descriptive analysis on all children admitted to EHUs. Among children with known outcome, we conducted univariable and multivariable analyses to explore factors potentially affecting outcome (online Technical Appendix). We accounted for missing data with multiple imputation using chained equations (online Technical Appendix) (17). All analyses were conducted by using Stata version 14.0 (StataCorp LP, College Station, TX, USA). We obtained approval from the Sierra Leone Ethics and Scientific Review Committee and the London School of Hygiene and Tropical Medicine Ethics committee (ref. 8924).

Results

Overall Outcomes

Our study comprised all 309 children 2 days–12 years of age admitted to EHUs and testing positive for EBOV (median age 6 years, interquartile range [IQR] 3–10 years; 158 [51%] female). Outcome (death or discharge) was available for 282 (91%) children; CFR was 57% (95% CI 51%–63%) (Table 1, <http://wwwnc.cdc.gov/EID/article/22/10/16-0579-T1.htm>). Eighty-six (28%) children died at EHUs, and 223 (72%) were transferred to ETCs, where an additional 74 (24%) died. Therefore, 55% of deaths occurred at EHUs and 45% at ETCs (Figure 3, panel A). Of children transferred to ETCs, 116 (38%) were discharged home and 3 (1%) were

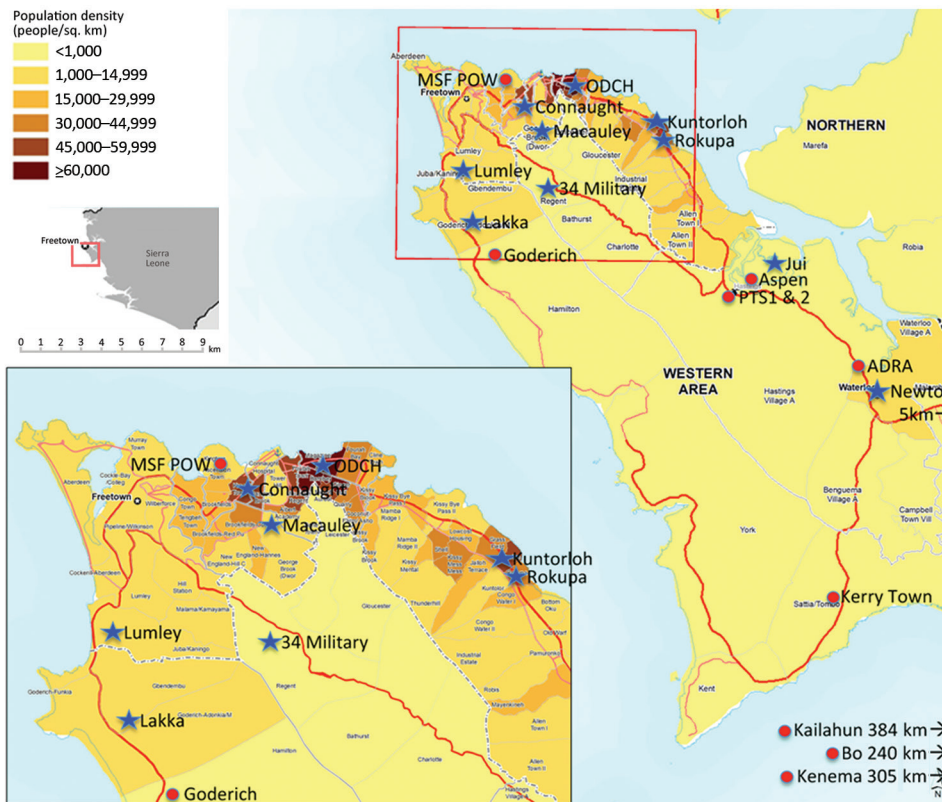


Figure 2. Location of Ebola holding units (blue star) and Ebola treatment centers (red circle), Western Area, Sierra Leone, January 2015. Population density map source: MapAction (cited 2015 Nov 8); reproduced with permission. Population figures are projected for 2014 from the 2004 census (http://www.mapaction.org/?option=com_mapcat&view=mapdetail&id=3589).

discharged to a hospital (Figure 3, panel A). Three children were discharged home from EHU/ETC without transfer. Median duration of EHU/ETC admission among children who died was 3 days (IQR 1–5 days) and for survivors was 17 days (IQR 11–20 days). Outcomes were missing for 27 (9%) children, all of whom had been transferred out of EHUs to ETCs (Figure 3, panel A). The CFR was highest in September and October 2014, a period of intense EBOV transmission, and peaked again in January 2015 (Figure 3, panel B).

Clinical Features

Data were available on symptoms at presentation for $\approx 70\%$ of children (Table 1). Fever was the most prevalent symptom (99%), followed by fatigue/weakness (80%), anorexia (79%), vomiting (59%), and diarrhea (44%); unexplained bleeding was rare (1%). Median reported duration of symptoms before presentation was 3 days (IQR 2–4 days). Of 193 children for whom exposure data were available, 151 (78%) had documented prior contact with a person with EVD, and 42 (22%) had documentation of no prior exposure to EVD.

Additional clinical information was available for a subset of 88 patients for the duration of EHU/ETC admission. In addition to 3 children with spontaneous bleeding at presentation, 7 (8%) had bleeding after admission. In order of frequency, manifestations were bleeding gums,

epistaxis, hematemesis, melena, and vaginal bleeding. Only 1 of these 10 children survived to discharge. Seizures were recorded during admission in 6 (7%) children: 3 died, 2 were discharged in a comatose state, and 1 recovered with no reported sequelae.

Laboratory Features

Additional blood test results were available for 36 children from 3 health facilities (Table 2). These children were of similar age (median 6 years, IQR 3–7 years) to children in the overall cohort, but the CFR was lower (11/36 [31%; 95% CI 16%–48%]). Children who died were younger than children who survived (data not shown).

Tests were taken a median of 3 days (range 0–18 days) after admission at an EHU. Leukocyte count (predominantly granulocytes) and C-reactive protein were elevated, and there was considerable renal and liver function derangement, particularly among children who died. Hyponatremia occurred among children who survived and who died, but potassium levels tended to be within normal limits. Hypoglycemia (blood glucose <4.0 mmol/L [reference 4–6.9 mmol/L]) was common among children who died (55% [95% CI 23%–83%]) and who survived (30% [95% CI 13%–53%]).

Cycle threshold (C_t) represented the point at which a quantitative PCR was interpreted as positive: the lower the

Table 2. Blood test results for children attending Ebola holding units and Ebola treatment units for whom blood test results were available Western Area, Sierra Leone, August 2014–March 2015*

Laboratory value (reference)	Median value among patients		p value†
	who died	who survived	
Leukocyte count (4–11), × 10 ⁹ /L	33, n = 7	9.2, n = 22	0.067
Lymphocyte count (1–3.2), × 10 ⁹ /L	6.1, n = 7	2.9, n = 21	0.007
Granulocyte count (2.5–7.5), × 10 ⁹ /L	19.9, n = 7	4.9, n = 22	0.009
Hemoglobin (135–175), g/L	123, n = 7	110, n = 22	0.097
Platelets (150–430), × 10/L	376, n = 7	179, n = 22	0.17
Sodium (128–145), mmol/L	127, n = 10	131, n = 24	0.11
Potassium (3.6–5.1), mmol/L	3.9, n = 7	4.1, n = 23	0.9
Urea (2.5–7.9), mmol/L	16.2, n = 11	4.2, n = 24	<0.001
Creatinine (53–106), mmol/L	120, n = 10	49, n = 24	0.003
Albumin (33–50), g/L	26, n = 11	31, n = 20	0.25
Aspartate transaminase (11–35), U/L	2,000, n = 8	159, n = 17	0.001
Alanine transaminase (10–48), U/L	667, n = 11	131, n = 18	<0.001
Creatine kinase (39–380), U/L	2,544, n = 8	623, n = 18	0.13
C-reactive Protein (0–7.5), mg/L	96, n = 10	8, n = 17	0.007
Viral cycle threshold, range‡	14.3–35.8, n = 40	17–38.2, n = 42	NA

*n values indicate number of patients in category for whom value was available. NA, not applicable

†Wilcoxon rank-sum test used because of small sample size.

‡Different reference ranges used.

C_t , the higher the initial viral load. Results were available from 90 children (42 who survived; 40 who died; 8 unknown; median age [IQR] 8.5 years [4–11 years], 5.0 years [3–10 years], and 6.0 years [2.9–10.5 years], respectively). The range of C_t was similar for children who died and who survived (14.3–35.8 vs. 17.0–38.2) (Table 2).

Health Systems and Clinical Management Factors

Median duration of admission at EHU before transfer or death was 2 days (IQR 1–3 days). Outcomes were available for 193 children who survived to transfer to an ETC. Twenty-five (13%) were transferred directly onto an on-site treatment ward, but most (168 [87%]) traveled 5–380 km (median 25 km [IQR 19.5–45.0 km]). For 201 children for whom information was available about caregiver accompaniment (written documentation in 119 [59%], information from staff interviews alone in 84 [41%]), 74 (37%) were documented as unaccompanied admissions.

Treatment was primarily supportive but ranged from aggressive intravenous or intraosseous fluid resuscitation with laboratory monitoring (more common in ETCs) to ORS and oral medications. Medications received at either EHUs or ETCs were recorded for 178 (58%) children: 99% received antimicrobial drugs and ORS, 85% antimalarial drugs, and 19% intravenous fluids.

Risk Factors for Death

In univariable analysis, younger age (odds ratio [OR] per year of life 0.91 [95% CI 0.85–0.97]) and diarrhea at presentation (OR 1.94 [95% CI 1.11–3.39]) were significantly associated with death. CFR was highest for infants (70%) (Figure 3, panel C).

In multivariable analysis, age was the strongest predictor of death (adjusted OR 0.92 [95% CI 0.86–0.98] per 1-year increment in age) (Table 1; Figure 3, panel C).

Diarrhea at presentation was associated with death (OR 1.91 [95% CI 1.08–3.39]). None of the following were associated with death: time from symptom onset to EHU admission, receipt of specific medications or intravenous fluids, attendance at any particular EHU, or being accompanied by a caregiver (Table 1; online Technical Appendix Table 2). We found minimal difference between estimates obtained by analyzing only complete records compared with accounting for missing data using multiple imputation (online Technical Appendix Tables 3, 4).

For 193 children transferred to ETCs for whom outcomes were known (online Technical Appendix Tables 5, 6), neither longer duration of EHU stay before transfer nor longer transfer distances appeared detrimental. Outcomes between ETCs varied considerably, but CIs were wide. Receipt of medications or intravenous fluids at the ETC also were not associated with survival.

Health Status of Survivors

Of 122 surviving children, data from survivor clinics or telephone interviews were available for 42 (34%). Twenty-five (60%) reported no problems; 6 (14%) were referred for ophthalmologic review with possible uveitis, 1 with monocular blindness; 3 (7%) had hearing problems; 2 (5%) had alopecia; 2 (5%) had joint pains; and 1 (2%) depressed affect. Of 2 children discharged without fully recovering consciousness, 1 was recovering and being cared for at home; the second had made little improvement in hospital.

Discussion

We aimed to identify modifiable operational and clinical management factors that could affect the outcome of EVD in children. The relative completeness of outcome data (91%) was possible only through a high level of collaboration between government and nongovernment organizations,

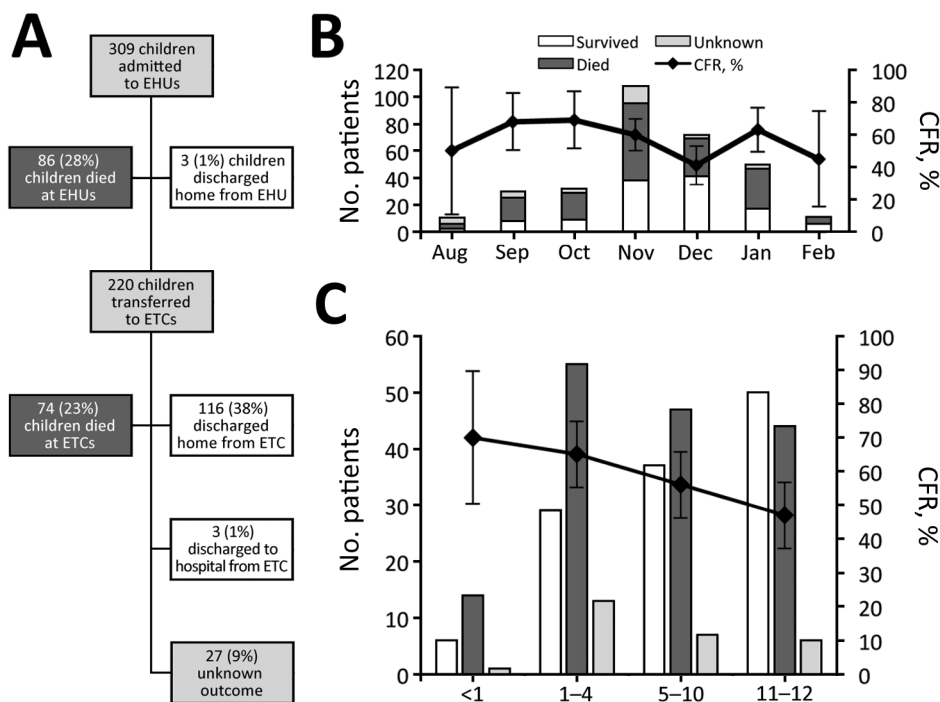


Figure 3. Outcome characteristics of children <13 years of age with Ebola virus disease, Western Area, Sierra Leone, August 2014–March 2015. A) Patient outcome flowchart; B) patient count and case-fatality rate (CFR) by month; C) Patient count and CFR by age. Error bars indicate 95% CIs.

triangulating available data sources. This collaboration enabled crucial matching of clinical management data between EHUs and ETCs, which had not been undertaken previously. That 55% of deaths occurred in EHUs highlights the importance of data pooling. Data from ETCs alone need to be interpreted in the context of substantial survivorship bias (11,12,18). Patients spent a median of 2 days at an EHU before ETC transfer, a critical period given the rapid progression to death.

Cohorts of children reported from previous outbreaks have been smaller, 1 comprising 20 laboratory-confirmed cases and another comprising 55 patients <22 years of age (4,19). The largest study of children from this outbreak was an international cohort documenting epidemiologic findings from across the 3 most affected countries based on data reported to regional control centers (3). Although the sample size included was much larger (2,991 confirmed or probable cases in patients ≤16 years of age), outcomes were available for 42%–59% (varying with age), versus 91% in our study. Furthermore, data were not available about clinical management or caregiver accompaniment.

Our study concurs with previous analyses reporting that young age, particularly infancy, is a risk factor for death from EVD (2,3,20–23). Progression to death was swift (median time 3 days from admission [IQR 1–5 days]), more rapid than reported in mixed age cohorts, and the overall death rate was high (2,9). Compared with the international cohort data from this outbreak, the children in this cohort progressed more rapidly to death. The shortest

mean duration from admission to death in the international cohort was 3.7 days for children 1–4 years of age and in other age groups was longer (3). Gastrointestinal symptoms predominated here as in mixed age cohorts, although diarrhea was less common in our study (45%) than in the international cohort study (60%) (5,13,24). Diarrhea at presentation, most likely a proxy for more severe disease, appeared to nearly double the risk for death. Few other clinical features at presentation appeared to be associated with death, possibly because of missing or unreliable data; in particular because so many children were unaccompanied, contact history, history of symptoms before attendance, and symptom duration must be cautiously interpreted. Contact history was denied in 42 (22%) children, implying a potential incentive for concealment, which further highlights the need for caution in interpreting these data. This study was powered to detect effects with an OR of ≈2, and the wide CIs for most risk factors mean that real associations not detected by this study cannot be ruled out.

Hypoglycemia in children with EVD has been assumed but not previously demonstrated (15). In this cohort, hypoglycemia was frequent and severe (40% of children tested had blood sugar <4.0 mmol/L). Hypoglycemia should be actively sought and treated as a priority, and dextrose should be included in maintenance intravenous fluids to minimize risk for hypoglycemia if monitoring is unavailable. The blood tests in this study were taken at the point of cannulation with no prior intravenous fluids received. As reported in a previous mixed-age cohort (12),

other laboratory features include a dramatically raised leukocyte count (predominantly neutrophils) and derangement of renal and liver function. These tests were conducted a median of 3 days after EHU admission and thus are likely to represent a less severe phenotype of disease than in those who died more rapidly. Data from 12 children <6 years of age in the Guinea JIKI trial also demonstrated raised serum creatinine, creatine kinase, and liver function enzymes, although less frequently than in our study (25). In contrast, a study from Gulu, Uganda, found no relation between serum chemistry results and death, although an association was seen with markers of immune activation (19). A high viral load (low C_t on PCR) has been demonstrated to be associated with death, but because our study was multicenter, the tests were conducted in different laboratories using different assays, making comparisons inappropriate (25–28).

In terms of clinical management factors, we found no evidence that intravenous fluids had a protective effect on survival, although our study lacked power for this analysis. A case series of adults and children in Liberia also found that intravenous fluids were not protective (29). This finding may reflect sicker patients being prioritized for fluid resuscitation. However, aggressive fluid resuscitation in the context of limited monitoring (as was the case in most EHUs) may also have entailed risks. Further research into the safest methods of fluid resuscitation and effective fluid balance monitoring in the Red Zone are crucial, alongside accurate documentation of caregiving.

Nearly 40% of children, even infants, were admitted unaccompanied to EHUs. Unaccompanied children are vulnerable to inadequate oral fluid resuscitation and the hazards of high-concentration chlorine on tap or in basins before even considering the emotional trauma of separation (30,31). Furthermore, such children could contribute to nosocomial EBOV transmission because they are difficult to keep in their bed space. The heat of personal protective equipment meant that healthcare workers could not spend long within the Red Zone supervising children (30,31). Many units had started to have survivors work in Red Zones because they are understood to be at vanishingly low risk for re-infection (32,33). This option could be explored in future outbreaks to ensure adequate care for children.

The overwhelming majority (87%) of children who survived long enough to be moved from an EHU were transferred at least 5 km. Even unaccompanied children and young infants faced transfers up to 380 km to the nearest available ETC bed in very basic ambulances. All of the children in this study who had unknown outcomes were transferred out of EHUs and might have been lost to their families in addition to epidemiologic follow up. Prioritizing transferring children to locations close to their homes could minimize the chance of this loss. Although in our study, neither caregiver presence nor transfer distance was

significantly associated with outcome, in the interests of the child both issues could be planned for in future outbreaks.

Although our study has outcomes for 91% of children, missing data and data reliability are a limitation. Transferring information, such as patient observations and medications given in the Red Zone to the low-risk Green Zone where notes were kept, was challenging. Solutions varied from scanners or radios to shouting over the fence, but none were ideal. Stethoscopes were banned, and even simple equipment, such as weighing scales and clocks, had a limited lifespan because of the high concentrations of chlorine used for cleaning. Some analyses lacked power, with wide CIs for some risk factors. Pooling data in this study with other similar cohorts could help identify additional risk factors for survival.

Children have previously been relatively spared by EVD (20,34,35). As the West Africa epidemic progressed, children constituted an increasing proportion of EVD cases (3,36,37). It is possible that earlier in the outbreak, more children were dying unreported at home, given that before the EVD epidemic, Sierra Leone had one of the highest infant mortality rates in the world (38). Thus, data presented here also might be subject to survivorship bias. A change in health-seeking behavior, namely bringing very sick children to hospital, might have contributed to the second peak in CFR later in the outbreak (Figure 3, panel B). Documented duration of symptoms before attendance did not change over time (data not shown) but might have been unreliably recorded.

The overarching messages of our study are 3-fold. First, death rates in children were high, and children died even more rapidly than previously documented (3). Second is the apparent lack of association between death and potentially modifiable factors that could alter outcome after infection. This lack of association calls for urgent prioritization of interventions targeted to prevent EVD in children. Children have been neglected thus far in EVD vaccine development, and this knowledge gap should be addressed (39,40). Furthermore, children should be included as a priority in future clinical trials of supportive care methods and of antiviral drugs. Third, the paucity and quality of data and the lack of studies pooling clinical management data from different sites need to be tackled. Many records were already lost when this study was conducted; any available data need to be urgently salvaged and shared. Plans for safe, rapid, and accurate data collection must be prioritized in outbreak planning to identify simple interventions that might improve outcome. We should act or miss a vital opportunity to learn how better to combat EVD in future epidemics.

Acknowledgments

We are grateful to the following organizations and individuals for their assistance and sharing of data: T.B. Kamara,

B.E. Parker, V. George, M. King, F. Koroma, Z.M Cooper, the Live Case Management Team of the Western Area Emergency Response Centre, Marion Dumbuya, Brima Kargbo, Marta Lado, Quanan Kessete, Iza Ciglenecki, Monia Sayah, Rupert Gould, Brian Raleigh, Trina Helderman, David Sinclair, Hana Rohan, Tim Brooks, Charity Garnett, Rachael Cummings, Kate Jarman, and the nurses, cleaners, and community health officers at each facility.

The study was funded by Save the Children. F.F. is supported by a grant from the Medical Research Council (MR/K023535/1) and the National Institute for Health Research Biomedical Research Centre at Great Ormond Street Hospital for Children NHS Foundation Trust and University College London. J.A.B. is funded as a Clinical Research Fellow by the European Union Seventh Framework Programme project PREPARE (Grant Agreement no. 602525).

Concept and study design by F.F., F.C., J.A.B., D.M.G., N.K., F.S., and S.Y., with input from other authors. Data collected by F.F., A.N., M.G., J.C.G., D.Y., M.J., D.B., A.M., H.J., and R.F. Data management, cleaning and analysis performed by K.W., S.O., S.B., with contributions from F.F., F.C., and S.Y. Manuscript drafted by F.F. with input from S.Y., F.C., D.M.G., S.L., K.W., and D.Y. All authors proofread and approved the final draft.

Dr. Fitzgerald is a pediatrician specializing in infectious diseases and currently holds an MRC clinical research training fellowship at the UCL Great Ormond Street Institute of Child Health. Her research interests include Ebola virus disease and HIV in children.

References

- World Health Organization. Ebola data and statistics [cited 2015 Sep 18]. <http://apps.who.int/gho/data/node.ebola-sitrep.quick-downloads?lang=en>
- Chertow DS, Kleine C, Edwards JK, Scaini R, Giuliani R, Sprecher A. Ebola virus disease in West Africa—clinical manifestations and management. *N Engl J Med*. 2014;371:2054–7. <http://dx.doi.org/10.1056/NEJMp1413084>
- Agua-Agum J, Ariyaratna A, Blake IM, Cori A, Donnelly CA, Dorigatti I, et al.; WHO Ebola Response Team. Ebola virus disease among children in West Africa. *N Engl J Med*. 2015;372:1274–7. <http://dx.doi.org/10.1056/NEJMc1415318>
- Mupere E, Kaducu OF, Yoti Z. Ebola haemorrhagic fever among hospitalised children and adolescents in northern Uganda: epidemiologic and clinical observations. *Afr Health Sci*. 2001;1:60–5.
- WHO Ebola Response Team. Ebola virus disease in West Africa—the first 9 months of the epidemic and forward projections. *N Engl J Med*. 2014;371:1481–95. <http://dx.doi.org/10.1056/NEJMoa1411100>
- Johnson O, Brown CS, Lado M, Wurie A, Bash-Taqi D, Hall A, et al. Ebola holding units at government hospitals in Sierra Leone: evidence for a flexible and effective model for safe isolation, early treatment initiation, hospital safety, and health system functioning. *BMJ Global Health*. 2016;1:e000030 <http://dx.doi.org/10.1136/bmjgh-2016-000030>.
- Brown C, Kessete Q, Baker P, Youkee D, Walker N, Kamara TB, et al. Bottlenecks in health systems functioning for control of Ebola virus disease in Connaught Hospital, Freetown, Sierra Leone. Poster P0092. Presented at: 26th European Congress of Clinical Microbiology and Infectious Diseases; 2016 Apr 9–12; Amsterdam, the Netherlands.
- Fitzgerald F, Awonuga W, Shah T, Youkee D. Ebola response in Sierra Leone: the impact on children. *J Infect*. 2016;72(Suppl):S6–12. <http://dx.doi.org/10.1016/j.jinf.2016.04.016>
- Agua-Agum J, Ariyaratna A, Aylward B, Blake IM, Brennan R, Cori A, et al.; WHO Ebola Response Team. West African Ebola epidemic after one year—slowing but not yet under control. *N Engl J Med*. 2015;372:584–7. <http://dx.doi.org/10.1056/NEJMc1414992>
- Dietz PM, Jambai A, Paweska JT, Yoti Z, Ksiazek TG. Epidemiology and risk factors for Ebola virus disease in Sierra Leone—23 May 2014 to 31 January 2015. *Clin Infect Dis*. 2015;61:1648–54.
- Ansumana R, Jacobsen KH, Sahr F, Idris M, Bangura H, Boie-Jalloh M, et al. Ebola in Freetown area, Sierra Leone—a case study of 581 patients. *N Engl J Med*. 2015;372:587–8. <http://dx.doi.org/10.1056/NEJMc1413685>
- Hunt L, Gupta-Wright A, Simms V, Tamba F, Knott V, Tamba K, et al. Clinical presentation, biochemical, and haematological parameters and their association with outcome in patients with Ebola virus disease: an observational cohort study. *Lancet Infect Dis*. 2015;15:1292–9. [http://dx.doi.org/10.1016/S1473-3099\(15\)00144-9](http://dx.doi.org/10.1016/S1473-3099(15)00144-9)
- Lado M, Walker NF, Baker P, Haroon S, Brown CS, Youkee D, et al. Clinical features of patients isolated for suspected Ebola virus disease at Connaught Hospital, Freetown, Sierra Leone: a retrospective cohort study. *Lancet Infect Dis*. 2015;15:1024–33. [http://dx.doi.org/10.1016/S1473-3099\(15\)00137-1](http://dx.doi.org/10.1016/S1473-3099(15)00137-1)
- MacDermott NE, De S, Herberg JA. Viral haemorrhagic fever in children. *Arch Dis Child*. 2016;101:461–8. <http://dx.doi.org/10.1136/archdischild-2014-307861>
- World Health Organization. Clinical management of patients in the Ebola treatment centres and other care centres in Sierra Leone: a pocket guide. Interim emergency guidelines. Sierra Leone adaptation. Geneva: The Organization; 2014
- Kreuels B, Wichmann D, Emmerich P, Schmidt-Chanasit J, de Heer G, Kluge S, et al. A case of severe Ebola virus infection complicated by gram-negative septicemia. *N Engl J Med*. 2014;371:2394–401. <http://dx.doi.org/10.1056/NEJMoa1411677>
- White IR, Royston P, Wood AM. Multiple imputation using chained equations: Issues and guidance for practice. *Stat Med*. 2011;30:377–99. <http://dx.doi.org/10.1002/sim.4067>
- Qin E, Bi J, Zhao M, Wang Y, Guo T, Yan T, et al. Clinical features of patients with Ebola virus disease in Sierra Leone. *Clin Infect Dis*. 2015;61:491–5. <http://dx.doi.org/10.1093/cid/civ319>
- McElroy AK, Erickson BR, Flietstra TD, Rollin PE, Nichol ST, Towner JS, et al. Biomarker correlates of survival in pediatric patients with Ebola virus disease. *Emerg Infect Dis*. 2014;20:1683–90. <http://dx.doi.org/10.3201/eid2010.140430>
- Olupot-Olupot P. Ebola in children: epidemiology, clinical features, diagnosis and outcomes. *Pediatr Infect Dis J*. 2015;34:314–6. <http://dx.doi.org/10.1097/INF.0000000000000638>
- Sadek RF, Khan AS, Stevens G, Peters CJ, Ksiazek TG. Ebola hemorrhagic fever, Democratic Republic of the Congo, 1995: determinants of survival. *J Infect Dis*. 1999;179(Suppl 1):S24–7. <http://dx.doi.org/10.1086/514311>
- Jamieson DJ, Uyeki TM, Callaghan WM, Meaney-Delman D, Rasmussen SA. What obstetrician-gynecologists should know about Ebola: a perspective from the Centers for Disease Control and Prevention. *Obstet Gynecol*. 2014;124:1005–10. <http://dx.doi.org/10.1097/AOG.0000000000000533>
- Ebola haemorrhagic fever in Zaire, 1976. *Bull World Health Organ*. 1978;56:271–93.

24. Bah EI, Lamah MC, Fletcher T, Jacob ST, Brett-Major DM, Sall AA, et al. Clinical presentation of patients with Ebola virus disease in Conakry, Guinea. *N Engl J Med*. 2015;372:40–7. <http://dx.doi.org/10.1056/NEJMoa1411249>
25. Sissoko D, Laouenan C, Folkesson E, M'Lebing AB, Beavogui AH, Baize S, et al.; JIKI Study Group. Experimental treatment with favipiravir for Ebola virus disease (the JIKI Trial): a historically controlled, single-arm proof-of-concept trial in Guinea. *PLoS Med*. 2016;13:e1001967. <http://dx.doi.org/10.1371/journal.pmed.1001967>
26. de La Vega MA, Caleo G, Audet J, Qiu X, Kozak RA, Brooks JI, et al. Ebola viral load at diagnosis associates with patient outcome and outbreak evolution. *J Clin Invest*. 2015;125:4421–8. <http://dx.doi.org/10.1172/JCI83162>
27. Broadhurst MJ, Kelly JD, Miller A, Semper A, Bailey D, Gropelli E, et al. ReEBOV Antigen Rapid Test kit for point-of-care and laboratory-based testing for Ebola virus disease: a field validation study. *Lancet*. 2015;386:867–74. [http://dx.doi.org/10.1016/S0140-6736\(15\)61042-X](http://dx.doi.org/10.1016/S0140-6736(15)61042-X)
28. Li J, Duan HJ, Chen HY, Ji YJ, Zhang X, Rong YH, et al. Age and Ebola viral load correlate with mortality and survival time in 288 Ebola virus disease patients. *Int J Infect Dis*. 2016;42:34–9. <http://dx.doi.org/10.1016/j.ijid.2015.10.021>
29. Gignoux E, Azman AS, de Smet M, Azuma P, Massaquoi M, Job D, et al. Effect of artesunate-amodiaquine on mortality related to Ebola virus disease. *N Engl J Med*. 2016;374:23–32. <http://dx.doi.org/10.1056/NEJMoa1504605>
30. Owens S, Leyland T. Fighting Ebola in Sierra Leone: a view from the frontline. *Arch Dis Child*. 2016;101:284–6. <http://dx.doi.org/10.1136/archdischild-2015-308330>
31. Aswani V. Being a pediatrician in an Ebola epidemic. *Pediatrics*. 2016;137:e20152950. Epub 2015 Dec 1. <http://dx.doi.org/10.1542/peds.2015-2950>
32. Francia M. Surviving together, in Ebola-hit Sierra Leone [cited 2015 Nov 13]. http://www.unicef.org/infobycountry/sierraleone_80800.html
33. Epstein JM, Sauer LM, Chelen J, Hatna E, Parker J, Rothman RE, et al. Infectious disease: mobilizing Ebola survivors to curb the epidemic. *Nature*. 2014;516:323–5. <http://dx.doi.org/10.1038/516323a>
34. Dowell SF. Ebola hemorrhagic fever: why were children spared? *Pediatr Infect Dis J*. 1996;15:189–91. <http://dx.doi.org/10.1097/00006454-199603000-00002>
35. Peacock G, Uyeki TM, Rasmussen SA. Ebola virus disease and children: what pediatric health care professionals need to know. *JAMA Pediatr*. 2014;168:1087–8. <http://dx.doi.org/10.1001/jamapediatrics.2014.2835>
36. Glynn JR. Age-specific incidence of Ebola virus disease. *Lancet*. 2015;386:432. [http://dx.doi.org/10.1016/S0140-6736\(15\)61446-5](http://dx.doi.org/10.1016/S0140-6736(15)61446-5)
37. Barry M, Traoré FA, Sako FB, Kpamy DO, Bah EI, Poncin M, et al. Ebola outbreak in Conakry, Guinea: epidemiological, clinical, and outcome features. *Med Mal Infect*. 2014;44:491–4. <http://dx.doi.org/10.1016/j.medmal.2014.09.009>
38. HELLERINGER S, NOYMER A, CLARK SJ, MCCORMICK T. Did Ebola relatively spare children? *Lancet*. 2015;386:1442–3. [http://dx.doi.org/10.1016/S0140-6736\(15\)00415-8](http://dx.doi.org/10.1016/S0140-6736(15)00415-8)
39. Fitzgerald F, Yeung S, Gibb DM, Baion DE, Pollard A. Ebola vaccination. *Lancet*. 2015;386:2478. [http://dx.doi.org/10.1016/S0140-6736\(15\)01243-X](http://dx.doi.org/10.1016/S0140-6736(15)01243-X)
40. Longini IM, Egger M, Dean NE, Edmunds WJ, Henao-Restrepo AM; study steering group. Ebola vaccination—authors' reply. *Lancet*. 2015;386:2480. [http://dx.doi.org/10.1016/S0140-6736\(15\)00951-4](http://dx.doi.org/10.1016/S0140-6736(15)00951-4)

Address for correspondence: Felicity Fitzgerald, Infection, Immunity, Inflammation and Physiological Medicine, UCL Institute of Child Health, 30 Guilford St, London WC1N 1EH, UK; email: felicity.fitzgerald@ucl.ac.uk

EID SPOTLIGHT TOPIC

Ebola, previously known as Ebola hemorrhagic fever, is a rare and deadly disease caused by infection with one of the Ebola virus strains. Ebola can cause disease in humans and nonhuman primates (monkeys, gorillas, and chimpanzees).

Ebola is caused by infection with a virus of the family *Filoviridae*, genus *Ebolavirus*. There are five identified Ebola virus species, four of which are known to cause disease in humans. Ebola viruses are found in several African countries; they were first discovered in 1976 near the Ebola River in what is now the Democratic Republic of the Congo. Before the current outbreak, Ebola had appeared sporadically in Africa.

The natural reservoir host of Ebola virus remains unknown. However, on the basis of evidence and the nature of similar viruses, researchers believe that the virus is animal-borne and that bats are the most likely reservoir. Four of the five virus strains occur in an animal host native to Africa.



**EMERGING
INFECTIOUS DISEASES**

<http://wwwnc.cdc.gov/eid/page/ebola-spotlight>

Ebola Virus Disease in Children, Sierra Leone, 2014–2015

Technical Appendix

Scheme for Matching Patient Data Across Different Locations

To ensure patients were accurately traced across different locations (i.e., from Ebola holding centers [EHUs] to Ebola treatment centers, the Western Area Emergency Response Command Centre database, burials database, and laboratory results database) a scheme was developed to ensure consistency in matching.

A complete match consisted of the criteria below:

1. Matching Western Urban/Rural Area number and matching name. This number was allocated with each case investigation form but was used inconsistently;
2. Matching name, age, and case investigation form date;
3. Four or more of name, age, case investigation form date, address, EHU, eventual status (positive/negative/transferred/discharged);

A partial match consisted of ≥ 3 of name, age, case investigation form date, address, EHU, eventual status (positive/negative/transferred/discharged). Small discrepancies in name spelling (e.g., Mohammed and Mohamed) could still be included as a complete match, but larger discrepancies of several letters (e.g., Abu and Abubakar) were a partial match. Matching was performed by 2 investigators. Any discrepancies between the 2 investigators' categorization were raised with the lead investigator (F.F.) with whom the final decision rested. Partial matches were reviewed by the lead investigator and either discarded or included depending on any additional information available (e.g., from telephone follow-ups). All complete matches were included in the analysis.

Sample Size

As discussed in the main text, at outset we estimated that 300 children would have sought care at EHUs in the Western Area. Assuming a case-fatality rate of 50% in the unexposed group for any particular risk factor, we estimated this sample size was sufficient to detect an effect size (odds ratio [OR]) of 2.0 (with an α of 0.05).

Statistical Analysis

In addition to that described in the Methods, numerically rare or ubiquitous symptoms and treatments were grouped to enable analysis (fever and fatigue into a “common symptoms” variable; skin rash, bleeding, and hiccups into a “rare symptoms” variable; and antimicrobial and antimalarial drugs into a “common medications” variable). Other date of admission variables considered included a categorical month of admission variable (8 categories) and a categorical 2-month of admission variable (4 categories), but low numbers in each category limited the usefulness of these variables.

Risk factor analysis was then conducted on a cohort restricted to children for whom outcome was known. Initial analysis involved tabulation of results by outcome status (died vs. survived), followed by univariable and multivariable logistic regression to identify variables associated with death. Although in theory it would have been possible to perform time-to-event analysis (enabling analysis of whether, for example, receipt of medication prolonged life), we decided to analyze death as a binary variable because 1) death was high and disease duration (follow-up time) short and 2) the date of death was not recorded for 15% of children who died (meaning that multivariable time-to-event analysis would have required an additional imputation step compared with analysis using logistic regression). We checked our assumption that a time-to-event analysis would produce similar results by restricting the cohort to those with known outcome dates and performing a Cox regression analysis, and comparing the crude hazard ratios (HRs) with the ORs obtained from a logistic regression analysis of the same restricted cohort. There was minimal difference in results obtained, and no alternative conclusions would have been made, e.g., HRs for age <5 years versus \geq 5 years was 1.59 (95% CI 1.13–2.24), compared with an OR of 1.80 (95% CI 1.05–3.07), HR for number of days from symptom onset to admission (HR per +1 day) was 1.00 (95% CI 0.93–1.07), compared with an OR of 0.99 (95%

CI 0.89–1.10), and HR for receiving both common medications versus only 1 medication was 0.73 (95% CI 0.40–1.34), compared with an OR of 0.57 (95% CI 0.20–1.62). For multivariable analysis, an initial model was fitted that included only variables with a (Wald test) p value of <0.20 in univariable analysis. A backward stepwise approach was then applied to obtain a final model, removing variables with $p > 0.10$ one by one. Given the relatively small size of the dataset and the number of possible adjustments in multivariable analysis, we chose a p value cutoff of 0.1 (rather than 0.05), so that variables only weakly associated with the outcome in our dataset would remain in our final model (to avoid a possible type II error due to the size of the dataset). This model was presented in the main results tables, with 2 additional models included in Technical Appendix Table 2 for reference: 1 model including all variables with $p < 0.20$ in univariable and another model that included all variables available for analysis (a fully adjusted model). This process was repeated for the secondary analysis restricted to children entering the Ebola treatment center (with the alternative models for this analysis presented in Technical Appendix Table 6). Missing data were assumed to be missing at random (*I*), and were accounted for using multiple imputation by chained equations. All available variables were included in the multiple imputation model, and we created 10 imputed datasets, which were combined for analysis. Our missing-at-random assumption was based on a priori reasoning that missing data across all variables would be dependent on other recorded variables. EHU admitted to and time period within the epidemic were considered as likely to be of particular importance because of differences in patient and data handling approaches between EHUs and over time. A tabulation was performed to assess this by looking at the association between having no symptoms recorded (vs. at least 1 symptom recorded) and several key variables with data fully recorded (Technical Appendix Table 3). A complete-records sensitivity analysis was also performed, to enable comparison with the results obtained by using multiple imputation (Technical Appendix Table 4).

References

1. Sterne JA, White IR, Carlin JB, Spratt M, Royston P, Kenward MG, et al. Multiple imputation for missing data in epidemiological and clinical research: potential and pitfalls. *BMJ*. 2009;338:b2393. [PubMed http://dx.doi.org/10.1136/bmj.b2393](http://dx.doi.org/10.1136/bmj.b2393)

2. World Health Organization. Clinical management of patients in the Ebola treatment centres and other care centres in Sierra Leone: a pocket guide. Interim emergency guidelines. Sierra Leone adaptation. Geneva: The Organization; 2014

Technical Appendix Table 1. Data sources*

Site	Data source	Data collected
EHU	Case investigation form	Demographics (age, address, vital status); date of symptom onset; date of admission to EHU; symptoms up until presentation; contact history; date of death or discharge if occurs from EHU
EHU	Site-specific clinical records and drug charts	Ebola PCR result; vital signs; symptom progression; receipt of enteral or parenteral fluids; medications given; laboratory results
EHU	Admission book	Whether accompanied by caregiver; if so whether caregiver symptomatic and tested; outcome of caregiver if available,
EHU	Staff interviews	Caregiver accompaniment; identity of caregiver; ability of caregiver to provide care to child (i.e., if too sick to care for child)
ETC	Case investigation form (should travel with patient from EHU)	Date of admission to ETC; location of EHU referred from; date of death or discharge
ETC	Site-specific clinical record	Ebola PCR result; vital signs; symptom progression; receipt of enteral or parenteral fluids; medications given; laboratory results; whether unrelated convalescent patient recruited to care for child
ETC	Admission book	Dates of admission, vital status of child, outcomes in some cases. whether accompanied by caregiver; outcome of caregiver, if available.
WAERC	WAERC database	Cross-referencing and confirmation of demographic data from case investigation forms; confirmation of dates and locations of transfers; cross-referencing of PCR result.
WAERC	Child protection records	Tracing missing outcomes
Burial teams led by Concern Worldwide	Burial records	Tracing missing outcomes
E-Health 117 emergency telephone service	Database of calls received reporting bodies and sick persons	Tracing missing outcomes
Telephone call to head of household		Vital status post discharge, any ongoing health problems (if available)
Survivor clinics	Clinical records of survivors attending clinic	Vital status post discharge, ongoing health problems (if available)
ODCH†	Hospital clinical records	Diagnosis; vital status; laboratory test results if available

*EHU, Ebola holding unit; ETC, Ebola treatment center; ODCH, Ola During Children's Hospital; WAERC, Western Area Emergency Response Command Centre.

†For children transferred from ETCs with ongoing clinical problems.

Technical Appendix Table 2. Multivariable analysis of 282 Ebola virus–positive children who attended an Ebola holding unit and for whom outcome information was recorded, Western Area, Sierra Leone, August 2014–March 2015*

Variable	Adjusted for all variables with p<0.2 in univariable analysis, OR (95% CI)	Fully adjusted OR (95% CI)
Sex		
F	1	1
M	1.36 (0.80–2.30)	1.44 (0.78–2.65)
Age, y, OR per + 1 y	0.92 (0.86–0.99)	0.94 (0.85–1.04)
Age group, y		
5 to ≤12	1	1
1 to ≤5	1.69 (1.00–2.86)	1.64 (0.77–3.49)
Days from symptom onset to EHU admission, OR per + 1 year	–	0.97 (0.85–1.04)
Common symptoms		
Fever or fatigue	–	1
Fever and fatigue	–	1.00 (0.44–2.27)
Vomiting/nausea		
No	–	1
Yes	–	0.69 (0.28–1.71)
Diarrhea		
No	1	1
Yes	1.84 (1.04–3.25)	1.84 (0.76–4.46)
Anorexia		
No	–	1
Yes	–	1.55 (0.59–4.10)
Abdominal pain		
No	–	1
Yes	–	0.87 (0.40–1.90)
Conjunctivitis		
No	–	1
Yes	–	1.35 (0.60–3.02)
Rare symptoms		
No	–	1
Yes	–	1.81 (0.58–5.60)
Muscle pain		
No	–	1
Yes	–	0.96 (0.23–4.02)
Joint pain		
No	–	1
Yes	–	1.72 (0.43–6.96)
Headache		
No	1	1
Yes	0.56 (0.29–1.07)	0.44 (0.20–1.00)
Difficulty breathing		
No	–	1
Yes	–	2.05 (0.60–7.03)
Difficulty swallowing		
No	–	1
Yes	–	0.80 (0.25–2.60)
Admitted accompanied by caregiver		
No	–	1
Yes	–	0.70 (0.19–2.52)
Admission date		
Before Jan 9	1	1
On/after Jan 9	1.84 (0.73–4.62)	3.87 (1.04–14.37)
Common medications		
Antimicrobial or antimalarial drug at EHU	–	1
Antimicrobial and antimalarial drug at EHU	–	0.33 (0.07–1.55)
Intravenous fluids at EHU		
No	–	1
Yes	–	0.35 (0.07–1.70)
EHU		
Ola During Children's Hospital	–	1
Connaught	–	1.13 (0.38–3.33)
Lumley	–	0.36 (0.07–1.69)
Rokupa	–	0.26 (0.08–0.92)
Macauley	–	1.05 (0.24–4.50)
Newton	–	0.50 (0.11–2.36)
Kerry Town	–	0.13 (0.01–1.69)
Police Training Station 2	–	0.19 (0.03–1.12)

Variable	Adjusted for all variables with p<0.2 in univariable analysis, OR (95% CI)	Fully adjusted OR (95% CI)
34 Military Hospital	–	0.31 (0.02–4.46)
Aspen	–	0.15 (0.01–2.37)
Kuntorloh	–	–
Jui	–	0.18 (0.01–2.73)

*OR, odds ratio; –, omission of variables according to p value as described in the analysis and in the column head.

Technical Appendix Table 3. Association between having all symptoms missing (vs. having at least 1 symptom recorded) and key complete variables for 282 Ebola virus–positive children who attended an Ebola holding unit and for whom outcome information was recorded, Western Area, Sierra Leone, August 2014–March 2015 *

Variable	Total	At least 1 symptom recorded	All symptoms missing	p value†
Total	282 (100)	209 (74)	73 (26)	–
Outcome				
Survived	122 (43)	89 (73)	33 (27)	0.697
Died	160 (57)	120 (75)	40 (25)	
Sex				
F	146 (52)	107 (73)	39 (27)	0.743
M	136 (48)	102 (75)	34 (25)	
Age, y				
Mean (± SD)	6.6 (3.9)	6.5 (3.8)	6.8 (4.0)	0.642
Median (interquartile range)	7 (3–10)	6 (3–10)	7 (3–10)	
Admission date				
Before Jan 9	256 (91)	187 (73)	69 (27)	0.199
On/after Jan 9	26 (9)	22 (85)	4 (15)	
Ebola holding unit				
Ola During Children's Hospital	112 (40)	94 (84)	18 (16)	<0.001
Connaught	57 (20)	55 (96)	2 (4)	
Lumley	13 (5)	10 (77)	3 (23)	
Rokupa	24 (9)	8 (33)	16 (67)	
Macauley	16 (6)	5 (31)	11 (69)	
Newton	20 (7)	9 (45)	11 (55)	
Kerry Town	5 (2)	3 (60)	2 (40)	
Police Training Station 2	14 (5)	13 (93)	1 (7)	
34 Military Hospital	10 (4)	2 (20)	8 (80)	
Aspen‡	4 (1)	–	–	
Kuntorloh‡	1 (0)	–	–	
Jui	6 (2)	5 (83)	1 (17)	

*All values are no. (%) unless indicated otherwise. –, dropped from the analysis because of insufficient numbers in all cells.

† χ^2 testing overall association of variable with missing symptom status variable.

‡Dropped from χ^2 analysis because of insufficient numbers in all cells.

Technical Appendix Table 4. Comparison of the imputed study dataset with a complete records approach for 282 Ebola virus-positive children who attended an EHU and for whom outcome information was recorded, Western Area, Sierra Leone, August 2014–March 2015*

Variable	Crude OR (95% CI)	
	Complete records†	Multiple imputation‡
Sex		
F	1	1
M	1.49 (0.93–2.39)	1.44 (0.78–2.65)
Age, y, OR per + 1 y	0.91 (0.85–0.97)	0.94 (0.85–1.04)
Age group, y		
5 to ≤12	1	1
1 to ≤5	1.88 (1.14–3.11)	1.88 (1.14–3.11)
Days from symptom onset to EHU admission, OR per +1 d	0.99 (0.90–1.08)	1.16 (0.59–2.29)
Common symptoms		
Fever or fatigue	1	1
Fever and fatigue	0.85 (0.20–3.68)	1.07 (0.58–1.97)
Vomiting/nausea		
No	1	1
Yes	1.12 (0.64–1.97)	1.13 (0.64–2.00)
Diarrhea		
No	1	1
Yes	2.05 (1.15–3.65)	1.94 (1.11–3.39)
Anorexia		
No	1	1
Yes	1.33 (0.68–2.60)	1.30 (0.66–2.55)
Abdominal pain		
No	1	1
Yes	0.80 (0.45–1.45)	0.82 (0.49–1.40)
Difficulty swallowing		
No	1	1
Yes	1.01 (0.51–2.00)	0.98 (0.44–2.17)
Difficulty breathing		
No	1	1
Yes	1.76 (0.72–4.28)	1.74 (0.69–4.55)
Muscle pain		
No	1	1
Yes	0.91 (0.51–1.63)	0.93 (0.53–1.64)
Joint pain		
No	1	1
Yes	0.98 (0.55–1.76)	1.00 (0.57–1.77)
Headache		
No	1	1
Yes	0.63 (0.35–1.14)	0.64 (0.34–1.19)
Conjunctivitis		
No	1	1
Yes	1.18 (0.65–2.14)	1.10 (0.63–1.90)
Rare symptoms		
No	1	1
Yes	1.48 (0.56–3.90)	2.04 (0.84–4.97)
Admitted accompanied by caregiver		
No	1	1
Yes	1.34 (0.73–2.45)	1.22 (0.65–2.28)
Date of admission		
Before Jan 9	1	1
On/after Jan 9	1.81 (0.76–4.31)	1.81 (0.76–4.31)
Common medications		
Antimicrobial or antimalarial drugs at EHU or ETC	1	1
Antimicrobial and antimalarial drugs at EHU or ETC	0.65 (0.25–1.71)	0.64 (0.32–1.30)
Intravenous fluids at EHU		
No	1	1
Yes	1.07 (0.33–3.46)	1.07 (0.33–3.46)
EHU		
Ola During Children's Hospital	1	1
Connaught	1.07 (0.55–2.08)	1.06 (0.55–2.08)
Lumley	0.49 (0.16–1.57)	0.49 (0.16–1.57)
Rokupa	0.35 (0.14–0.86)	0.35 (0.14–0.86)
Macauley	1.27 (0.41–3.91)	1.27 (0.41–3.91)
Newton	0.58 (0.22–1.50)	0.58 (0.22–1.50)
Kerry Town	0.38 (0.06–2.40)	0.38 (0.06–2.40)
Police Training School 2	0.32 (0.10–1.02)	0.32 (0.10–1.02)

Variable	Crude OR (95% CI)	
	Complete records†	Multiple imputation‡
34 Military Hospital	0.58 (0.16–2.11)	0.58 (0.16–2.11)
Aspen	0.58 (0.08–4.26)	0.58 (0.08–4.26)
Jui	0.29 (0.05–1.65)	0.29 (0.05–1.65)

*EHU, Ebola holding unit; ETC, Ebeol treatment center; OR, odds ratio

†Complete records: only patients with complete records for the variable in question were analyzed.

‡Multiple imputation used to account for missing data, with variables included in the multiple imputation model in accordance with Table 2.

Technical Appendix Table 5. Descriptive, univariable, and multivariable analysis of 193 Ebola virus–positive children who entered an EHU, who survived to attend an ETC, and for whom outcome information was recorded, Western Area, Sierra Leone, August 2014–March 2015*

Variable	Total	Survived	Died	Crude OR (95% CI)†	Multivariable adjusted OR‡
Total§	193 (100)	119 (62)	74 (38)	–	–
Had diarrhea at EHU					
No	83 (43)	55 (66)	28 (34)	1	–
Yes	52 (27)	29 (56)	23 (44)	1.47 (0.72–3.0)	–
Days between EHU admission and ETC transfer					
Mean (± SD)	2.6 (2.1)	2.7 (2.1)	2.6 (2.2)	1.00 (0.86–1.14)	–
Median (IQR)	2 (2–3)	2 (2–3)	2 (1–3)	–	–
Transfer distance, km					
Mean (± SD)	52.9 (85.5)	46.3 (76.6)	63.3 (96.9)	1.00 (0.99–1.01)	–
Median (IQR)	20 (14–45)	25 (18–42)	20 (14–45)	OR for each +1 km	–
Transfer distance, km, binary					
0	26 (13)	17 (65)	9 (35)	1	–
>0	167 (87)	102 (61)	65 (39)	1.20 (0.51–2.86)	–
Transfer distance, km, 4 groups					
0	26 (13)	17 (65)	9 (35)	1	–
1 to <20	38 (20)	22 (58)	16 (42)	1.37 (0.49–3.86)	–
20 to <50	103 (53)	68 (66)	35 (34)	0.97 (0.39–2.40)	–
≥50	26 (14)	12 (46)	14 (54)	2.20 (0.72–6.73)	–
ETC					
Kerry Town confirmed beds (1)	55 (28)	39 (71)	16 (29)	1	1
Police Training School 1 (2)	67 (35)	48 (72)	19 (28)	0.96 (0.44–2.12)	1.07 (0.48–2.40)
Police Training School 2 (3)	14 (7)	9 (64)	5 (36)	1.35 (0.39–4.67)	1.20 (0.34–4.22)
34 Military Hospital (4)	7 (4)	3 (43)	4 (57)	3.25 (0.65–16.20)	2.92 (0.57–15.02)
MSF POW (5)	11 (6)	2 (18)	9 (82)	10.97 (2.13–56.49)	13.30 (2.50–70.71)
Bo (6)	9 (5)	4 (44)	5 (56)	3.05 (0.72–12.83)	3.45 (0.80–14.89)
Kenema (7)	14 (7)	6 (43)	8 (57)	3.25 (0.97–10.88)	3.72 (1.08–12.81)
Aspen (8)	11 (6)	6 (55)	5 (45)	2.03 (0.54–7.62)	2.25 (0.59–8.60)
Kailahun (9)	1 (1)	1 (100)	0	–	–
Adventist Development and Relief Agency (10)	1 (1)	1 (100)	0	–	–
Goderich (11)	3 (2)	0	3 (100)	–	–
Medication received					
Had antimicrobial drug at EHU or ETC¶					
No	5 (3)	2 (40)	3 (60)	1	–
Yes	124 (65)	75 (60)	49 (40)	0.78 (0.18–3.39)	–
Had antimalarial drug at EHU or ETC					
No	27 (14)	19 (70)	8 (30)	1	–
Yes	102 (53)	75 (60)	49 (40)	1.60 (0.71–3.63)	–
Had antiemetic drug at EHU or ETC					
No	91 (47)	53 (58)	38 (42)	1	–
Yes	38 (20)	24 (63)	14 (37)	0.92 (0.45–1.89)	–
Had intravenous fluids at ETC					
No	148 (77)	93 (62)	55 (38)	1	–
Yes	45 (23)	26 (58)	19 (42)	1.24 (0.63–2.44)	–

*All results are no. (%), unless otherwise indicated. EHU, Ebola holding unit; ETC, Ebola treatment center; IQR, interquartile range; MSF POW, Médecins Sans Frontières Prince of Wales; OR, odds ratio; –, variables omitted because $p > 0.2$ as described in the notes or $p < 0.1$ as described in the notes.

†OR (95% CI), with multiple imputation used to account for missing data. Multiple imputation model comprised antimicrobial drug received, antiemetic drug received, antimalarial drug received, presence of diarrhea, whether admitted to EHU with caregiver, time from symptom onset to admission, days between admission to EHU and transfer to ETC, date of admission, specific EHU, specific ETC, sex, outcome status, distance between EHU and ETC, and age.

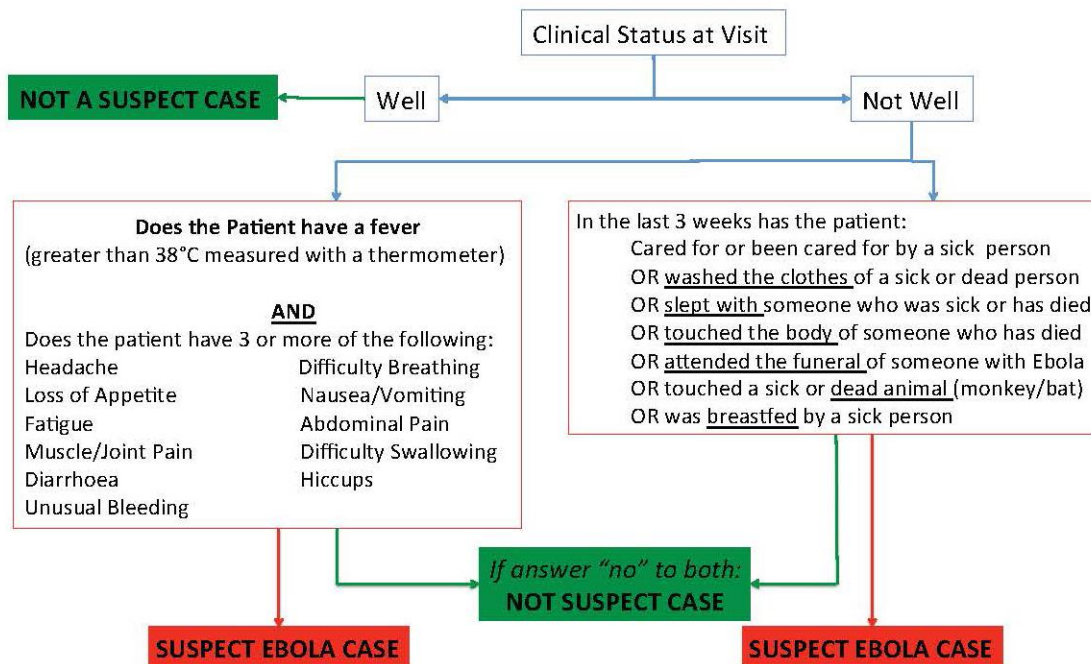
‡Variables selected for inclusion in analysis using a backward stepwise approach (first selecting variables with $p < 0.2$ in univariable analysis, before removing those with $p < 0.1$ one by one). Multiple imputation applied in accordance with †.

§Total children admitted to ETC with complete outcome information.

Technical Appendix Table 6. Multivariable analysis of 193 Ebola virus–positive children who entered an EHU and survived to attend an ETC and for whom outcome information was recorded (alternative models), Western Area, Sierra Leone, August 2014–March 2015*

Variable	Adjusted for all variables with p<0.2 in univariable analysis, OR (95% CI)	Fully adjusted OR (95% CI)
Had diarrhea at EHU		
No	–	1
Yes	–	1.16 (0.54–2.47)
Days between EHU admission and ETC transfer		
Mean (\pm SD)	–	1.00 (0.84–1.20)
Median (IQR)	–	–
Transfer distance, km		
Mean (\pm SD)	1.03 (0.99–1.07)	1.01 (0.97–1.05)
Median (IQR)	OR for each +1 km	OR for each +1 km
ETC		
Kerry Town confirmed beds	1	1
Police Training School 1	2.33 (0.70–7.73)	1.62 (0.41–6.43)
Police Training School 2	2.69 (0.38–19.22)	2.38 (0.35–16.28)
34 Military Hospital	8.24 (0.92–73.71)	5.57 (0.59–52.26)
Médécins Sans Frontières Prince of Wales	21.63 (2.69–173.97)	16.57 (1.99–138.14)
Bo	–	–
Kenema	–	–
Aspen	4.18 (0.68–25.6)	3.00 (0.46–19.69)
Kailahun	–	–
Adventist Development and Relief	–	–
Goderich	–	–
Had antimicrobial drug at EHU or ETC		
No	–	1
Yes	–	0.77 (0.13–4.56)
Had antimalarial drug at EHU or ETC		
No	–	1
Yes	–	1.25 (0.39–4.10)
Had antiemetic drug at EHU or ETC		
No	–	1
Yes	–	1.04 (0.40–2.71)
Had intravenous fluids at ETC		
No	–	1
Yes	–	1.74 (0.62– 4.88)

*EHU, Ebola holding unit; ETC, Ebola treatment center; IQR, interquartile range; OR, odds ratio; –, omission of variables according to p value as described in the analysis.



The symptom checklist is modified for children as below:

Children <5 years	Children ≥5 years
Fever or history of fever within 48 hours	Fever or history of fever within 48 hours
Vomiting	Vomiting or nausea
Appetite loss	Appetite loss
Diarrhoea	Diarrhoea
Difficulty breathing	Difficulty breathing or swallowing
Excessive crying	Headache
Unexplained bleeding (nose, gums, gastrointestinal or other)	Unexplained bleeding (nose, gums, gastrointestinal or other)
Red eyes and or rash	Red eyes and or rash
Prostration	Weakness or severe fatigue
	Generalised muscular or articular pain
If fever (or history of fever) and ≥1 symptom isolate child	If fever (or history of fever) and ≥2 symptoms isolate child

Technical Appendix Figure. Screening flowchart for Ebola virus disease used on attendance at healthcare facilities to classify patients as “suspect Ebola case” or “not suspect case,” Western Area, Sierra Leone (2).