

# Norovirus Genotype Profiles Associated with Foodborne Transmission, 1999–2012

Linda Verhoef,<sup>1</sup> Joanne Hewitt,<sup>1</sup> Leslie Barclay,<sup>1</sup> Sharia M. Ahmed, Rob Lake, Aron J. Hall, Ben Lopman, Annelies Kroneman, Harry Vennema, Jan Vinjé, Marion Koopmans

Worldwide, noroviruses are a leading cause of gastroenteritis. They can be transmitted from person to person directly or indirectly through contaminated food, water, or environments. To estimate the proportion of foodborne infections caused by noroviruses on a global scale, we used norovirus transmission and genotyping information from multiple international outbreak surveillance systems (Noronet, CaliciNet, EpiSurv) and from a systematic review of peer-reviewed literature. The proportion of outbreaks caused by food was determined by genotype and/or genogroup. Analysis resulted in the following final global profiles: foodborne transmission is attributed to 10% (range 9%–11%) of all genotype GII.4 outbreaks, 27% (25%–30%) of outbreaks caused by all other single genotypes, and 37% (24%–52%) of outbreaks caused by mixtures of GII.4 and other noroviruses. When these profiles are applied to global outbreak surveillance data, results indicate that  $\approx$ 14% of all norovirus outbreaks are attributed to food.

Noroviruses are a leading cause of gastroenteritis worldwide. They belong to the family *Caliciviridae* and consist of an  $\approx$ 7.5-kb genome in 3 open reading frames (ORFs). The first ORF (ORF1) encodes a polypeptide; ORF2 encodes the viral capsid protein (VP1); and ORF3 encodes a minor structural protein (VP2). Noroviruses are classified into at least 6 genogroups, GI–GVI (1). According to a recent unified proposal for nomenclature, genogroups are further subdivided into at least 38 genetic clusters (genotypes) (2). Noroviruses are environmentally stable (3) and can be transmitted by different routes (e.g., foodborne, personborne, waterborne, and environmental). Determining the transmission route during an outbreak

investigation is complicated because transmission can occur by multiple routes in a single outbreak. After primary introduction of the virus through food, secondary person-to-person and environmental transmission can rapidly take over, making it hard to trace the disease back to contaminated food. Another complexity is that foodborne transmission can follow different routes as well; food can be contaminated during production (4) or during handling by an infected food handler (5).

Different exposure attribution methods (i.e., epidemiologic investigations, microbiological typing/subtyping, intervention studies, and expert elicitations) have been used to estimate the foodborne proportion of the overall disease incidence caused by a pathogen. Each approach has its advantages and disadvantages, and therefore the use of multiple methods has been recommended (6). Information about pathogen strain or subtypes may be of value for attribution but is dependent on substantial amounts of contextual data. For example, a method commonly used to attribute *Salmonella* spp. infections to a specific source uses strain collections representative of the pathogen in each of these sources (7).

For noroviruses, genogroup-specific differences have been reported with regard to environmental persistence (8), sensitivity to removal (9), and binding to receptors (10). These biological differences may underpin strain-specific epidemiologic patterns, suggesting a potentially useful approach for norovirus attribution. Such an approach was recently developed in a norovirus attribution study, which showed that the proportion of foodborne and person-to-person outbreaks differed between genotypes; the GI genotypes were more likely to be foodborne, and the II.4 genotype was more likely to be personborne (11). These findings indicate that genotype profiles may help distinguish which outbreaks are more likely to be foodborne than personborne. Also, a recent study on norovirus outbreaks in the United States showed that GI.3, GI.6, GI.7, GII.3, GII.6, and GII.12 were the norovirus genotypes most often associated with foodborne outbreaks and that, of the outbreaks with a known transmission route,

Author affiliations: National Institute for Public Health and the Environment, Bilthoven, the Netherlands (L. Verhoef, A. Kroneman, H. Vennema, M. Koopmans); Institute of Environmental Science and Research, Porirua, New Zealand (J. Hewitt, R. Lake); Centers for Disease Control and Prevention, Atlanta, Georgia, USA (L. Barclay, S.M. Ahmed, A.J. Hall, B. Lopman, J. Vinjé); Erasmus Medical Center, Rotterdam, the Netherlands (M. Koopmans)

<sup>1</sup>These authors contributed equally to this article.

16% were foodborne (12). Norovirus infections, however, are a global problem, and efforts are under way to estimate the global social and economic costs of foodborne norovirus illness (13,14). To estimate the proportion of outbreaks attributed to foodborne transmission from a global perspective, we used aggregated norovirus outbreak data and genotyping information from different outbreak surveillance systems and from peer-reviewed literature.

## Methods

Data from 4 sources were available for comparison: 3 laboratory-based norovirus outbreak surveillance network databases and 1 systematic review of norovirus outbreaks in the peer-reviewed published literature. Laboratory surveillance networks aim to link norovirus outbreaks that may be caused by common sources (such as food), monitor genotype trends, and identify emerging norovirus strains. Relevant data from these networks included transmission route(s) and norovirus genotyping performed by sequence analysis of the polymerase (ORF-1) and capsid (VP1/ORF-2) regions of the norovirus genome. Polymerase and capsid sequences were not available for all samples, requiring separate analyses.

## Databases

### Foodborne Viruses in Europe Network/Noronet

The Foodborne Viruses in Europe (FBVE) network was started in 1999 as a European Union–funded combined laboratory and epidemiological network of 13 European countries sharing norovirus outbreak data (15). Since 1999, the FBVE network has maintained a joint database in which members have shared their data. In 2009, Noronet was started as a continuation of the FBVE network (13). Noronet is an informal network of scientists working in public health institutes or universities that share virologic, epidemiologic, and molecular data on norovirus. The network now includes laboratories in countries outside Europe. Although all laboratories use PCR-based methods for norovirus detection, the detected parts of the norovirus genome may differ between laboratories; consequently, genotyping is not necessarily based on the same part of the genome. Sequence data shared in the FBVE/Noronet database include regions A and B (polymerase) and/or regions C and D (capsid) of the genome (15). Data from 5,583 outbreaks that occurred from January 1999 through December 2012 are included in the analyses.

### CaliciNet

The US Centers for Disease Control and Prevention developed CaliciNet in 2009 (16). CaliciNet is a national norovirus outbreak surveillance network of public health and food regulatory laboratories that submit epidemiologic information and PCR-based norovirus detection and typing

information, including regions C and D (capsid) sequences of the genome, to a national database by using standardized protocols (12,16). As of November 2013, participants from 32 public health laboratories in 28 states have been certified to participate in CaliciNet. Data from 3,094 outbreaks reported from September 2009 through December 2012 are used in the analyses.

### Institute of Environmental Science and Research–EpiSurv

In New Zealand, gastroenteritis outbreaks are reported by public health units that submit epidemiologic information to the EpiSurv database, a surveillance system operated by the Institute of Environmental Science and Research (ESR) for the New Zealand Ministry of Health. As part of the New Zealand norovirus surveillance, the ESR Norovirus Reference Laboratory conducts norovirus detection testing by using PCR-based methods (17) followed by genotyping of at least 1 case per outbreak. Sequence data are obtained from region B and/or region C of the genome (18). Combined data from the ESR Norovirus Reference Laboratory and EpiSurv are summarized in annual outbreak reports ([https://surv.esr.cri.nz/surveillance/annual outbreak](https://surv.esr.cri.nz/surveillance/annual%20outbreak)). Data from 819 outbreaks reported from January 2008 through December 2012 are included in the analyses.

### Systematic Literature Review

In 2012, Matthews et al. (19) published results of a systematic review of all norovirus outbreaks reported in the scientific literature from 1993 through 2011. We updated this systematic review to include norovirus outbreaks published in 2012 (online Technical Appendix, <http://wwwnc.cdc.gov/EID/article/21/4/14-1073-Techapp1.pdf>). During September 2012, we searched the literature in the EMBASE, Medline, Web of Science, and Global Health databases for the term “norovirus” and related terms (19). Two independent reviewers screened titles and abstracts for relevance. We included articles published in 2012 that fit the following criteria designated by Matthews et al.: 1) full article, 2) published in English, 3) describes human norovirus outbreaks, 4) used PCR-based diagnostics for at least 1 case per outbreak (19). We excluded articles describing sporadic norovirus cases and articles describing outbreaks among immunocompromised patients (e.g., transplant recipients). Separate outbreak-level data were extracted from articles reporting multiple outbreaks, but the articles’ citations were not referenced for outbreak reports. Genogroup and genotype information (and if available, the PCR target region) was extracted.

## Definitions

### Transmission Routes

To determine the proportion of outbreaks that were caused by foodborne transmission of the virus (hereafter called the

foodborne proportion) we accepted the route(s) assigned in the various databases to each outbreak, based on previous investigation of the FBVE database (11) and based on the local public health investigation and with the assistance of standardized guidance materials to provide some consistency (<http://www.cdc.gov/mmwr/preview/mmwrhtml/rr6003a1.htm>). If the primary or secondary mode of transmission was reported as foodborne, this outbreak was considered a foodborne outbreak (includes foods contaminated during production or during handling). If person-to-person transmission was reported to be one of the possible routes, the outbreak was considered a person-to-person outbreak. We excluded outbreaks for which transmission route was listed as environmental or waterborne only (1 for ESR-EpiSurv, 0 for CaliciNet, 68 for FBVE/Noronet).

### Genotype Profiles

Each of the surveillance databases used genotypes as previously proposed (2). For the purpose of attribution, the proportion of outbreaks listed as being transmitted by the foodborne route was calculated for each polymerase genotype (P-type) or capsid genotype (C-type) individually. The proportions of all individual genotypes that were transmitted by the foodborne route, on the basis of a single data source, were termed genotype profiles and were aggregated into categories of profiles according to the analyses described in the following sections.

## Analyses

### Comparison of Data to Test Robustness of Genotype Profiles

First, to test whether the genotype profile-based data from 1999–2012 could be generalized, we analyzed genotype data for differences in time (i.e., yearly). This analysis for robustness over time was performed for the FBVE/Noronet database only. Second, to test whether the genotype profiles based on these 2 genomic regions (P-type and C-type) for typing could be combined, we analyzed genotypes based on polymerase sequences if they matched with genotype profiles based on capsid sequences. Because the FBVE and ESR-EpiSurv data had capsid and polymerase sequences available, the comparison was performed for these datasets. Third, we tested whether the analysis by individual genotypes could be aggregated into larger categories on the basis of how well their foodborne proportions corresponded. For this purpose, the profile of each individual genotype was compared with a profile consisting of sequences that belonged to 1 of 4 categories (genogroup aggregation): GI, GII genotype 4 (GII.4), GII but not GII.4 (GII<sub>non4</sub>), and mixed (genotypes belonging to multiple genogroups). Categories were further aggregated into larger categories if the aggregation did not significantly affect the results. Thus, aggregation into categories was performed in the following

3 steps: 1) if the foodborne proportions of an individual genotype did not statistically differ from 1 of the 4 categories, genotypes were merged into this category; 2) if categories did not statistically differ from each other, these categories were merged into larger categories; and 3) if profiles of different data sources did not statistically differ (on the basis of their CIs), these profiles were merged and considered as a profile from 1 data source.

### Comparison of Worldwide Data and Estimating the Foodborne Proportion

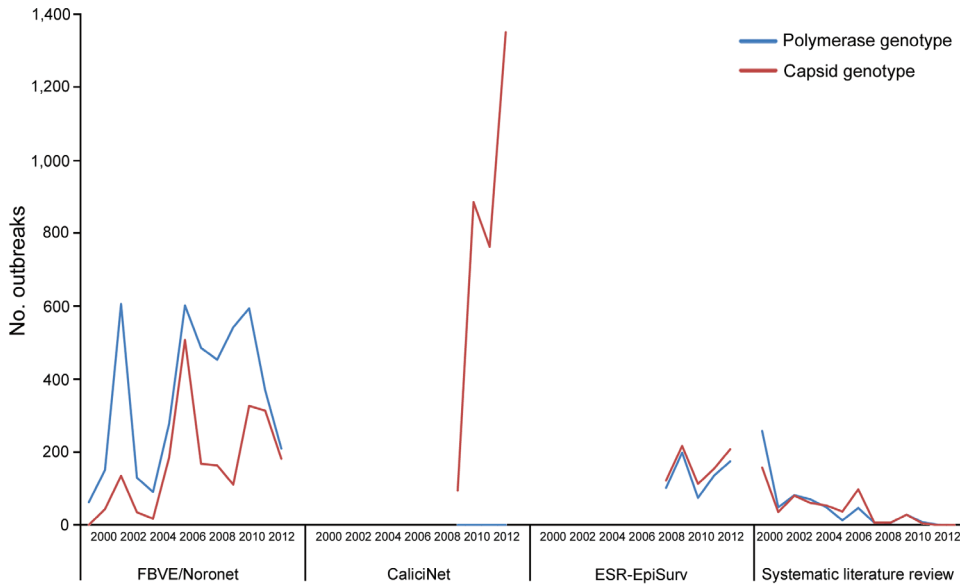
We compared the outcomes after the genotypes were aggregated into the proposed categories of all 4 datasets. We used the resulting profiles to estimate the foodborne proportion among outbreaks for which genotype was known but transmission mode was not known and thereby to estimate the foodborne proportion of norovirus outbreaks in different parts of the world.

### Statistical Analyses

For each genotype in the surveillance systems, we estimated the fraction of outbreaks for which origin was known to be foodborne or person-to-person on the basis of the foodborne proportion of all foodborne plus person-to-person outbreaks for each genotype. We used the estimated proportion of foodborne outbreaks of all foodborne plus person-to-person outbreaks in each genotype to estimate the probability that outbreaks with unknown transmission mode were foodborne. We calculated 95% CIs by using the Monte Carlo simulation with 10,000 random draws from the  $\beta$  distributions, which are the posterior probabilities of the proportions (20). If 95% CIs overlapped, the genotypes were considered not statistically significantly different and genotypes were aggregated into profiles of larger groups. Data were analyzed by using SAS version 9.3 (SAS Institute, Inc., Cary, NC, USA).

## Results

The FBVE/Noronet database included 5,583 norovirus outbreaks reported from 22 countries during 1999–2012 (Figures 1, 2). Of these, C-type sequence information was available for 4,580 outbreaks, P-type for 2,195 outbreaks, and both types for 1,192 outbreaks. The CaliciNet database included information about 3,094 outbreaks that occurred in the United States during 2009–2012; C-type sequence information was available for all outbreaks. The ESR-EpiSurv database included 818 outbreaks reported from New Zealand during 2008–2012, of which C-type and P-type information was available for 813 and 685, respectively. Our updated systematic review (online Technical Appendix) provided information on 966 norovirus outbreaks, of which genotype and transmission mode information was available for 608 (127 C-type, 107 P-type, 374 both) from



**Figure 1.** Norovirus data for which the genotyped region and transmission mode were reported in different surveillance systems: FBVE/Noronet, 5,583 outbreaks in 22 countries (1999–2012); CaliciNet, 3,094 outbreaks in 1 country (2009–2012); ESR-EpiSurv, 818 outbreaks in 1 country (2008–2012); and systematic literature review, 808 outbreaks in 61 countries (1993–2011). ESR, Institute of Environmental Science and Research; FBVE, Foodborne Viruses in Europe.

61 countries during 1983–2010 (Figures 1, 2). Our updated systematic literature search yielded reports of 320 outbreaks in Japan, 113 in the United States, 500 in other countries, and 18 in multiple countries; country information was missing for 15 outbreaks.

### Robustness of Genotype Profiles

Initial analysis showed substantial differences for the estimated proportion of foodborne outbreaks caused by each genotype, depending on the dataset used, the time of reporting, and the method of typing, most likely because of low numbers of outbreaks for some genotypes (online Technical Appendix Table). These differences were no longer observed when the data were aggregated into 4 categories (GI, GII.4, GIInon4, and mixed genotype outbreaks) and later into 3 categories (GII.4, all other single genotypes, and mixed genotype outbreaks).

With respect to time trend, the comparison of the yearly profiles based on FBVE/Noronet data showed variation in the proportions of outbreaks with foodborne origin per category over time (Figure 3). Because of this finding, together with the knowledge that norovirus is known for its emerging new variants (13), the synchronization of time frames of different surveillance databases was considered necessary.

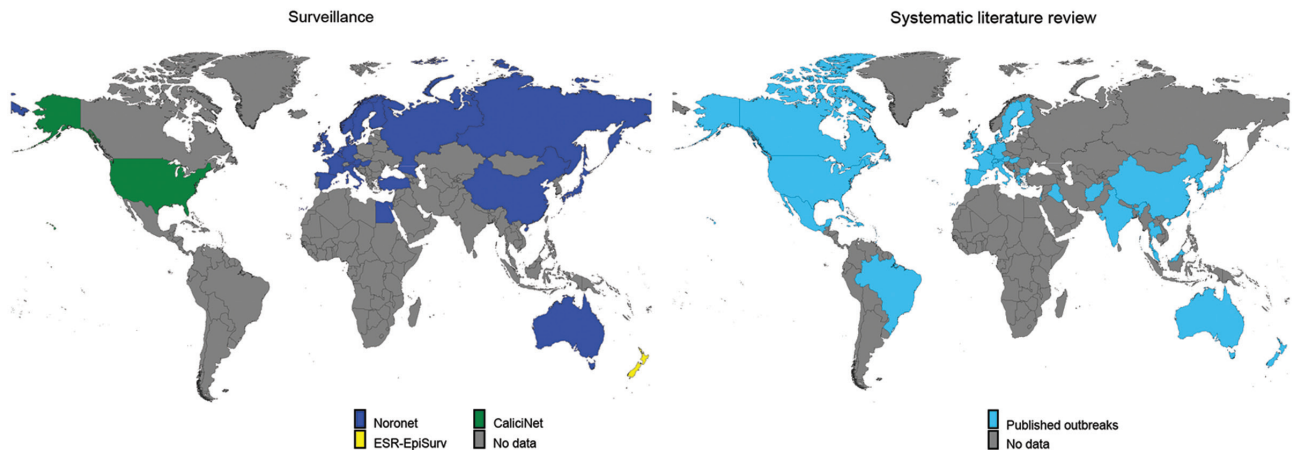
Our analyses showed differences in foodborne proportions for outbreaks for which the C-type was determined and for outbreaks for which the P-type was determined (online Technical Appendix Table). This difference is possibly a surveillance artifact caused by multiple countries contributing to FBVE/Noronet, because this effect was not seen in the ESR-EpiSurv profiles (online Technical Appendix Table), in which P and C types were both available for 685

outbreaks. For this reason the profiles for each genomic region were kept separately.

With respect to the genotypes versus aggregated categories, for FBVE/Noronet and ESR-EpiSurv data, aggregation of individual genotypes into the GI and GIInon4 categories showed that these cannot be statistically distinguished but that they differ from the categories of the GII.4 genotype and mixed outbreaks. GII.4 and mixed outbreaks show statistical difference and need to be treated as separate categories (online Technical Appendix Table). For CaliciNet and the updated systematic review data, results were similar to those of FBVE/Noronet and ESR-EpiSurv but with one difference (i.e., that mixed outbreaks could not be statistically distinguished as a separate group in the CaliciNet dataset). On the basis of these results, we used the following criteria for subsequent profile comparisons: 1) assignment into 3 categories (GII.4, all other single genotypes, and mixed genotypes); 2) separate analysis of data based on P-type and C-type; and 3) synchronized periods for different surveillance systems (2009–2012).

### Database Comparisons

For outbreaks reported during 2009–2012, the P-type profiles from the New Zealand surveillance system, the European surveillance system, and from other countries contributing to Noronet were comparable (Table). Attribution profiles from CaliciNet showed similar values for the categories of GII.4 and nonGII.4 outbreaks but different values for the group of mixed outbreaks. However, this finding was based on 31 (1.0%) of 3,094 outbreaks. Because of this low number and the knowledge that how these outbreaks are ascertained in the respective surveillance systems might differ, we considered aggregation of the mixed outbreaks



**Figure 2.** Countries from which norovirus outbreak reports were included in analyses of norovirus genotype profiles associated with foodborne transmission, according to Foodborne Viruses in Europe/Noronet (1999–2012), CaliciNet (2009–2012), ESR-EpiSurv (2008–2012), or systematic literature review (1993–2011). ESR, Institute of Environmental Science and Research.

category of the 3 surveillance databases justified. This consideration is strengthened by the finding that foodborne proportions are similar for the other 2, far more common, categories (GII.4, GIInon4).

The profiles resulting from the updated systematic review differed, but not significantly, probably because only 8 outbreaks were selected for the included time span of 2009–2012. This finding resulted in no distinguishable categories, and therefore this dataset was excluded from further calculations. On the basis of this analysis, for food attribution purposes, the profiles from the United States, New Zealand, Europe, and other countries contributing to Noronet can be merged into a global profile (Table).

#### Foodborne Attribution of Norovirus Outbreaks

Applying the profiles per surveillance database, the proportion of outbreaks attributed to foodborne transmission varied slightly (12% for FBVE/Noronet, 13% for ESR-EpiSurv, and 16% for CaliciNet), the aggregated global estimate was 13.7%. Overall, 10% (range 9%–11%) of all GII.4 norovirus outbreaks, 27% (25%–30%) of outbreaks caused by all other single genotypes, and 37% (24%–52%) of outbreaks with mixtures of GII.4 and other genotypes were attributed to foodborne transmission. Applying the global attribution profile to all outbreaks reported worldwide in surveillance systems in 2009–2012, of the outbreaks with an unknown mode of transmission, 193 (14.5%) of 1,332 outbreaks could be attributed to food.

#### Discussion

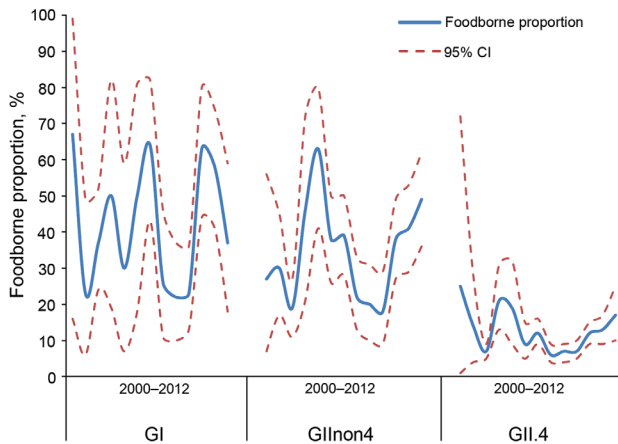
This analysis of aggregated surveillance datasets of norovirus outbreaks suggests that genotyping can provide useful information for attribution. At 14%, the estimated proportion of outbreaks attributed to foodborne transmission is

comparable across the 3 independent datasets. We found that the proportion of outbreaks caused by foodborne transmission was lower for outbreaks caused by GII.4 norovirus than for those associated with all other genotypes (Table). This finding is consistent with previous findings (11). GII.4 viruses are notorious for their potential to spread easily from person to person and their rapid evolution (21). GII.4 viruses are more often described as causing outbreaks in (semi-)closed settings (12,18,22–24), implying a higher proportion of person-to-person spread as well. Although proportionally low, the absolute contribution of GII.4 foodborne outbreaks to the social and economic costs of outbreaks caused by noroviruses is considerable, given the numbers of outbreaks caused by this genotype.

Although the calculations for mixed infections were based on low numbers, mixed norovirus infections were less frequently associated with foodborne outbreaks in the United States than in the other countries for which data were available. Mixed infections have been associated with sewage-related outbreaks (25). Further research is needed to confirm whether our findings reflect true differences or differences in laboratory and investigative practices.

The use of internationally collected surveillance data and published outbreak reports is potentially associated with different kinds of biases. Therefore, our study has some limitations.

First, the differences between the surveillance data and the data reported in the literature gathered by Matthews et al. (19) (and in our update in the online Technical Appendix) in terms of foodborne proportion suggests the possibility of publication bias in favor of foodborne outbreaks. This bias has been described; reports of larger foodborne outbreaks with severe outcomes are more likely to be published (26). This hypothesis is supported by the



**Figure 3.** Genotype profiles. Foodborne proportion per genotype group per year, as reported to Foodborne Viruses in Europe/Noronet, with polymerase genotypes (n = 4,580) or, if missing, capsid genotypes (n = 1,003).

higher proportion of foodborne outbreaks caused by GII.4 and nonGII.4 found in the literature review.

Second, combining retrospective data from countries that differ in surveillance setup, coverage, and continuity is difficult. Individual cases of norovirus infection are not nationally notifiable in most of Europe, the United States, or New Zealand. Ascertainment and reporting of foodborne outbreaks probably varies substantially by setting (27) or between countries because of differing priorities and the complexity of the food chain. Despite this limitation, there was no feasible way to verify the transmission designation for every sample. Nevertheless, previous investigation of assignment of transmission modes within the FBVE network (28) showed that 2 of 13 countries used personborne transmission as a diagnosis of exclusion. Therefore, we consider that our estimate of the foodborne proportion is probably diluted and thus conservative. Ideally, data would be collected prospectively worldwide in a systematic approach, but until that is feasible, we consider our approach of using the data available from surveillance systems acceptable as best practice.

Third, differences in results based on P and C typing may reflect biases. This limitation mainly involves the FBVE/Noronet database, which includes data from

multiple countries. For some countries, like the Netherlands, polymerase genotyping is the standard but capsid genotyping is performed for more thoroughly investigated outbreaks. Examples of reasons for additional capsid sequence typing are to find transmission chains (29,30), to confirm whether a new GII.4 variant is emerging (22), or to look for recombinants when suspected (31). Therefore, the FBVE/Noronet profiles based on capsid genotyping may be biased toward more unusual outbreaks and thereby possibly more often toward foodborne outbreaks. The FBVE network previously investigated the country-specific approaches (27,28) showing that, for example, Denmark has a surveillance system strongly focused on foodborne outbreaks, whereas in the United Kingdom, outbreaks in institutional settings are more often reported. This difference was reflected in the genotype profiles of these countries, thus confirming the different genotype profiles. In the United States, capsid sequencing is the standard, regardless of the outbreak circumstances; polymerase genotypes are not routinely uploaded to CaliciNet. In New Zealand, genotyping is based on the polymerase and capsid regions (if both can be determined), regardless of the outbreak circumstances. This systematic approach to genotyping regardless of the outbreak circumstances may explain why the US capsid profile and both the ESR-EpiSurv capsid and polymerase profiles are most similar to the FBVE/Noronet polymerase profile; these profiles are the result of systematic surveillance. A recent illustration of the value of performing both polymerase and capsid genotyping is the global emergence of the GII.4 Sydney 2012 variant (32). This variant is a GII.4 recombinant (33) with a GII.4 C-type and a GII.e P-type (34). Distinction of GII.4 versus nonGII.4 would not be possible if only polymerase-based genotype profiles were used.

Despite the shortcomings in working with surveillance data or data available in the public domain, our study showed that the proportion of norovirus outbreaks attributed to foodborne transmission is comparable in different parts of the world. The proportion of norovirus outbreaks attributed to foodborne transmission is in the same order of magnitude as the 17% found in an expert elicitation study from the Netherlands (35) and 11% in the United Kingdom as estimated from outbreak surveillance data (36). This similarity strongly

**Table.** Proportion of foodborne outbreaks per category, estimated according to different databases for 2009–2012\*

Genotype	Database				
	FBVE/Noronet, n = 1,715	ESR-EpiSurv, n = 584	CaliciNet, n = 3,094	Systematic literature review, n = 8	Global profile, n = 5,393
GII.4	0.07 (0.06–0.09)	0.09 (0.06–0.11)	0.12 (0.10–0.14)	0.12 (0.00–0.40)	0.10 (0.09–0.11)
Other genotypes	0.31 (0.25–0.37)	0.25 (0.17–0.33)	0.26 (0.23–0.30)	0.67 (0.16–0.97)	0.27 (0.25–0.30)
Mixed outbreaks	0.75 (0.48–0.94)	0.50 (0.20–0.75)	<b>0.16 (0.05–0.33)</b>	CNBC	0.37 (0.24–0.52)
Foodborne proportion†	0.12	0.13	0.16	CNBC	0.14

\*FBVE/Noronet polymerase profile was used to compare with ESR-EpiSurv polymerase, systematic literature review polymerase, and CaliciNet capsid profiles. CNBC, could not be calculated; ESR, Institute of Environmental Science and Research; FBVE, Foodborne Viruses in Europe. Estimates in italics do not statistically differ from the FBVE/Noronet polymerase profile as a reference; estimates in boldface do statistically differ.

†Proportion of outbreaks with an unknown mode of transmission estimated to be attributed to food.

indicates that this microbiology-based attribution method is robust, albeit in need of continued refinement (6). With  $\approx 1$  in 7 norovirus outbreaks being attributable to food, the foodborne transmission route represents a major target for intervention, particularly given the possibility of widespread exposures and the possibility of preventing not only primary but also secondary cases if contaminated foods are recalled from the market. Given the high incidence (37) and prevalence (38) of norovirus infections, norovirus has become a major cause of foodborne illness worldwide. To improve estimates of the social and economic costs of norovirus illness, future research should be aimed at filling the data gaps and should include nonindustrialized countries while aiming for global coverage of norovirus surveillance data.

### Acknowledgments

We thank the World Health Organization's Foodborne Disease Burden Epidemiology Reference Group for financial support and critical review of this study, and we thank the FBVE and Noronet networks for collecting and sharing sequences.

The New Zealand Ministry of Health funded the work conducted by the ESR. This study was commissioned and paid for in part by the Foodborne Disease Burden Epidemiology Reference Group of the World Health Organization, the New Zealand Ministry of Health, and by the Government of the Netherlands on behalf of the Foodborne Disease Burden Epidemiology Reference Group.

Dr. Verhoef is an epidemiologist in the Center of Infectious Disease Control of the National Institute for Public Health and the Environment. Her work focuses on the epidemiology and surveillance of infectious diseases, particularly on the use of molecular typing information to facilitate source tracing activities.

### References

- Fields BN, Knipe DM, Howley PM. *Fields virology*. 6th ed. Philadelphia: Wolters Kluwer/Lippincott Williams & Wilkins Health; 2013.
- Kroneman A, Vega E, Vennema H, Vinje J, White PA, Hansman G, et al. Proposal for a unified norovirus nomenclature and genotyping. *Arch Virol*. 2013;158:2059–68. <http://dx.doi.org/10.1007/s00705-013-1708-5>
- Cannon JL, Papafragkou E, Park GW, Osborne J, Jaykus LA, Vinje J. Surrogates for the study of norovirus stability and inactivation in the environment: a comparison of murine norovirus and feline calicivirus. *J Food Prot*. 2006;69:2761–5.
- Lees D. Viruses and bivalve shellfish. *Int J Food Microbiol*. 2000;59:81–116. [http://dx.doi.org/10.1016/S0168-1605\(00\)00248-8](http://dx.doi.org/10.1016/S0168-1605(00)00248-8)
- Thornley CN, Hewitt J, Perumal L, Van Gessel SM, Wong J, David SA, et al. Multiple outbreaks of a novel norovirus GII.4 linked to an infected post-symptomatic food handler. *Epidemiol Infect*. 2013;141:1585–97. <http://dx.doi.org/10.1017/S0950268813000095>
- Pires SM. Assessing the applicability of currently available methods for attributing foodborne disease to sources, including food and food commodities. *Foodborne Pathog Dis*. 2013;10:206–13. <http://dx.doi.org/10.1089/fpd.2012.1134>
- Hald T, Vose D, Wegener HC, Koupeev T. A Bayesian approach to quantify the contribution of animal-food sources to human salmonellosis. *Risk Anal*. 2004;24:255–69. <http://dx.doi.org/10.1111/j.0272-4332.2004.00427.x>
- Gentry J, Vinje J, Guadagnoli D, Lipp EK. Norovirus distribution within an estuarine environment. *Appl Environ Microbiol*. 2009;75:5474–80. <http://dx.doi.org/10.1128/AEM.00111-09>
- Tuladhar E, Hazeleger WC, Koopmans M, Zwietering MH, Beumer RR, Duizer E. Residual viral and bacterial contamination of surfaces after cleaning and disinfection. *Appl Environ Microbiol*. 2012;78:7769–75. <http://dx.doi.org/10.1128/AEM.02144-12>
- Maalouf H, Zakhour M, Le Pendu J, Le Saux JC, Atmar RL, Le Guyader FS. Distribution in tissue and seasonal variation of norovirus genogroup I and II ligands in oysters. *Appl Environ Microbiol*. 2010;76:5621–30. <http://dx.doi.org/10.1128/AEM.00148-10>
- Verhoef L, Vennema H, van Pelt W, Lees D, Boshuizen H, Henshilwood K, et al. Use of norovirus genotype profiles to differentiate origins of foodborne outbreaks. *Emerg Infect Dis*. 2010;16:617–24. <http://dx.doi.org/10.3201/eid1604.090723>
- Vega E, Barclay L, Gregoricus N, Shirley SH, Lee D, Vinje J. Genotypic and epidemiologic trends of norovirus outbreaks in the United States, 2009 to 2013. *J Clin Microbiol*. 2014;52:147–55. <http://dx.doi.org/10.1128/JCM.02680-13>
- Siebenga JJ, Vennema H, Zheng DP, Vinje J, Lee BE, Pang XL, et al. Norovirus illness is a global problem: emergence and spread of norovirus GII.4 variants, 2001–2007. *J Infect Dis*. 2009;200:802–12. <http://dx.doi.org/10.1086/605127>
- Stein C, Kuchenmuller T, Hendrickx S, Pruss-Ustun A, Wolfson L, Engels D, et al. The Global Burden of Disease assessments—WHO is responsible? *PLoS Negl Trop Dis*. 2007;1:e161. <http://dx.doi.org/10.1371/journal.pntd.0000161>
- Kroneman A, Harris J, Vennema H, Duizer E, van Duynhoven Y, Gray J, et al. Data quality of 5 years of central norovirus outbreak reporting in the European Network for food-borne viruses. *J Public Health (Oxf)*. 2008;30:82–90. <http://dx.doi.org/10.1093/pubmed/fdm080>
- Vega E, Barclay L, Gregoricus N, Williams K, Lee D, Vinje J. Novel surveillance network for norovirus gastroenteritis outbreaks, United States. *Emerg Infect Dis*. 2011;17:1389–95.
- Kageyama T, Kojima S, Shinohara M, Uchida K, Fukushi S, Hoshino FB, et al. Broadly reactive and highly sensitive assay for Norwalk-like viruses based on real-time quantitative reverse transcription-PCR. *J Clin Microbiol*. 2003;41:1548–57. <http://dx.doi.org/10.1128/JCM.41.4.1548-1557.2003>
- Greening GE, Hewitt J, Rivera-Aban M, Croucher D. Molecular epidemiology of norovirus gastroenteritis outbreaks in New Zealand from 2002–2009. *J Med Virol*. 2012;84:1449–58. <http://dx.doi.org/10.1002/jmv.23349>
- Mathews JE, Dickey BW, Miller RD, Felzer JR, Dawson BP, Lee AS, et al. The epidemiology of published norovirus outbreaks: a review of risk factors associated with attack rate and genogroup. *Epidemiol Infect*. 2012;140:1161–72. <http://dx.doi.org/10.1017/S0950268812000234>
- Brown LD, Cai TT, DasGupta A. Interval estimation for a binomial proportion. *Stat Sci*. 2001;16:101–33. <http://dx.doi.org/10.1214/ss/1009213286>
- Lindesmith LC, Beltramello M, Donaldson EF, Corti D, Swanstrom J, Debbink K, et al. Immunogenetic mechanisms driving norovirus GII.4 antigenic variation. *PLoS Pathog*. 2012;8:e1002705. <http://dx.doi.org/10.1371/journal.ppat.1002705>
- Verhoef L, Depoortere E, Boxman I, Duizer E, van Duynhoven Y, Harris J, et al. Emergence of new norovirus variants on spring cruise ships and prediction of winter epidemics. *Emerg Infect Dis*. 2008;14:238–43. <http://dx.doi.org/10.3201/eid1402.061567>
- Bernard H, Hohne M, Niendorf S, Altmann D, Stark K. Epidemiology of norovirus gastroenteritis in Germany 2001–2009:

- eight seasons of routine surveillance. *Epidemiol Infect.* 2014; 142:63–74. <http://dx.doi.org/10.1017/S0950268813000435>
24. Lopman BA, Adak GK, Reacher MH, Brown DW. Two epidemiologic patterns of norovirus outbreaks: surveillance in England and Wales, 1992–2000. *Emerg Infect Dis.* 2003;9:71–7. <http://dx.doi.org/10.3201/eid0901.020175>
  25. Gallimore CI, Pipkin C, Shrimpton H, Green AD, Pickford Y, McCartney C, et al. Detection of multiple enteric virus strains within a foodborne outbreak of gastroenteritis: an indication of the source of contamination. *Epidemiol Infect.* 2005;133:41–7.
  26. O'Brien SJ, Gillespie IA, Sivanesan MA, Elson R, Hughes C, Adak GK. Publication bias in foodborne outbreaks of infectious intestinal disease and its implications for evidence-based food policy. England and Wales 1992–2003. *Epidemiol Infect.* 2006;134:667–74. <http://dx.doi.org/10.1017/S0950268805005765>
  27. Kroneman A, Verhoef L, Harris J, Vennema H, Duizer E, van Duynhoven Y, et al. Analysis of integrated virological and epidemiological reports of norovirus outbreaks collected within the Foodborne Viruses in Europe network from 1 July 2001 to 30 June 2006. *J Clin Microbiol.* 2008;46:2959–65. <http://dx.doi.org/10.1128/JCM.00499-08>
  28. Verhoef LP, Kroneman A, Van Duynhoven Y, Boshuizen H, van Pelt W, Koopmans M. Selection tool for foodborne norovirus outbreaks. *Emerg Infect Dis.* 2009;15:31–8. <http://dx.doi.org/10.3201/eid1501.080673>
  29. Rondy M, Koopmans M, Rotsaert C, Van Loon T, Beljaars B, Van Dijk G, et al. Norovirus disease associated with excess mortality and use of statins: a retrospective cohort study of an outbreak following a pilgrimage to Lourdes. *Epidemiol Infect.* 2011;139:453–63. <http://dx.doi.org/10.1017/S0950268810000993>
  30. Sukhrie FH, Beersma MF, Wong A, van der Veer B, Vennema H, Bogerman J, et al. Using molecular epidemiology to trace transmission of nosocomial norovirus infection. *J Clin Microbiol.* 2011;49:602–6. <http://dx.doi.org/10.1128/JCM.01443-10>
  31. Symes SJ, Gunesekere IC, Marshall JA, Wright PJ. Norovirus mixed infection in an oyster-associated outbreak: an opportunity for recombination. *Arch Virol.* 2007;152:1075–86. <http://dx.doi.org/10.1007/s00705-007-0938-9>
  32. van Beek J, Ambert-Balay K, Botteldoorn N, Eden JS, Fonager J, Hewitt J, et al. Indications for worldwide increased norovirus activity associated with emergence of a new variant of genotype II.4, late 2012. *Euro Surveill.* 2013;18:8–9.
  33. Eden JS, Tanaka MM, Boni MF, Rawlinson WD, White PA. Recombination within the pandemic norovirus GII.4 lineage. *J Virol.* 2013;87:6270–82. <http://dx.doi.org/10.1128/JVI.03464-12>
  34. Fonager J, Barzinci S, Fischer TK. Emergence of a new recombinant Sydney 2012 norovirus variant in Denmark, 26 December 2012 to 22 March 2013. *Euro Surveill.* 2013;18:pii:20506.
  35. Havelaar AH, Galindo AV, Kurowicka D, Cooke RM. Attribution of foodborne pathogens using structured expert elicitation. *Foodborne Pathog Dis.* 2008;5:649–59. <http://dx.doi.org/10.1089/fpd.2008.0115>
  36. Adak GK, Long SM, O'Brien SJ. Trends in indigenous foodborne disease and deaths, England and Wales: 1992 to 2000. *Gut.* 2002;51:832–41. <http://dx.doi.org/10.1136/gut.51.6.832>
  37. Tam CC, Rodrigues LC, Viviani L, Dodds JP, Evans MR, Hunter PR, et al. Longitudinal study of infectious intestinal disease in the UK (IID2 study): incidence in the community and presenting to general practice. *Gut.* 2012;61:69–77.
  38. Ahmed SM, Hall AJ, Robinson AE, Verhoef L, Premkumar P, Parashar UD, et al. Global prevalence of norovirus in cases of gastroenteritis: a systematic review and meta-analysis. *Lancet Infect Dis.* 2014;14:725–30. [http://dx.doi.org/10.1016/S1473-3099\(14\)70767-4](http://dx.doi.org/10.1016/S1473-3099(14)70767-4)

Address for correspondence: Linda P.B. Verhoef, National Institute for Public Health and the Environment (RIVM), Postbak 75, PO Box 1, 3720 BA Bilthoven, the Netherlands; email: [linda.verhoef@rivm.nl](mailto:linda.verhoef@rivm.nl)

Full text free online at [www.cdc.gov/eid](http://www.cdc.gov/eid)

**UPDATE MY ADDRESS**

## EMERGING INFECTIOUS DISEASES<sup>®</sup>

The print journal is available at no charge to public health professionals.

Yes, I still want the journal. Please send it to me at the address below.

Number on mailing label: (required) \_\_\_\_\_

Name: \_\_\_\_\_

Full mailing address: (BLOCK LETTERS)



**Return:**

Email: [eideditor@cdc.gov](mailto:eideditor@cdc.gov)

Fax: 404-639-1954

**or mail to:**

EID Editor  
CDC/NCID/MS D61  
1600 Clifton Rd, NE  
Atlanta, GA 30333  
USA



# Norovirus Genotype Profiles Associated with Foodborne Transmission, 1999–2012

## Technical Appendix

Technical Appendix Table. Proportion of foodborne outbreaks per genotype as estimated based on norovirus surveillance data in Noronet, ESR-EpiSurv, CaliciNet and an updated systematic review of scientific literature

Profile	FBVE/Noronet 1999-2012				ESR-EpiSurv 2008-2012				CaliciNet 2009-2012		Systematic literature review			
	P-type (n=4580)		C-type (n=2196)		P-type (n=685)		C-type (n=813)		C-type (n=3094)		P-type (n=107)		C-type (n=127)	
Group Type	N	Proportion FB (95%CI)	N	Proportion FB (95%CI)	N	Proportion FB (95%CI)	N	Proportion FB (95%CI)	N	Proportion FB (95%CI)	N	Proportion FB (95%CI)	N	Proportion FB (95%CI)
GI	315	0.36 (0.29-0.42)	169	0.53 (0.43-0.62)	56	0.28 (0.17-0.40)	66	0.28 (0.18-0.39)	322	0.30 (0.24-0.36)	15	0.71 (0.46-0.91)	14	0.91 (0.69-1.00)
I.1	12	0.17 (0.01-0.52)	10	0.57 (0.23-0.88)	0		0		4	0.25 (0.01-0.71)	0		0	
I.2	20	0.57 (0.32-0.81)	12	0.75 (0.43-0.96)	4	0.20 (0.01-0.61)	6	0.29 (0.05-0.65)	10	0.44 (0.15-0.75)	0		1	0.66 (0.15-0.99)
I.3	99	0.27 (0.18-0.38)	50	0.41 (0.26-0.58)	13	0.29 (0.09-0.54)	15	0.31 (0.12-0.55)	77	0.29 (0.18-0.41)	8	0.63 (0.29-0.90)	2	0.67 (0.15-0.99)
I.4	85	0.37 (0.25-0.50)	52	0.50 (0.35-0.66)	20	0.38 (0.19-0.59)	21	0.36 (0.18-0.57)	38	0.26 (0.11-0.45)	3	0.75 (0.28-0.99)	2	0.67 (0.16-0.99)
I.5	4	0.50 (0.10-0.90)	5	0.80 (0.39-0.99)	1	0.33 (0.01-0.84)	1	0.33 (0.01-0.85)	17	0.22 (0.07-0.43)	1	0.66 (0.15-0.99)	0	
I.6	0		32	0.56 (0.37-0.73)	14	0.27 (0.08-0.51)	21	0.23 (0.08-0.42)	150	0.29 (0.21-0.38)	1	0.33(0.01-0.84)	0	
I.7	12	0.50 (0.18-0.81)	7	0.57 (0.22-0.88)	0		0		24	0.60 (0.35-0.82)	0		0	
I.8	2	0.33 (0.01-0.84)	0		2	0.50 (0.09-0.91)	2	0.50 (0.09-0.91)	1	0.67 (0.16-0.99)	0		2	0.67 (0.17-0.99)
I.9	0		0		0		0		1	0.33 (0.01-0.84)	0		0	
I.14	0		0		0		0		0		0		3	0.67 (0.15-0.99)
I.a	2	0.75 (0.30-0.99)	n.a.		0		n.a.		n.a.		0		n.a.	
I.b	72	0.38 (0.26-0.50)	n.a.		2	0.25 (0.01-0.70)	n.a.		n.a.		0		n.a.	
I.d	4	0.60 (0.19-0.93)	n.a.		0		n.a.		n.a.		0		n.a.	
I.e	2	0.50 (0.09-0.90)	n.a.		0		n.a.		n.a.		0		n.a.	
I.f	1	0.67 (0.05-1.00)	n.a.		0		n.a.		n.a.		0		n.a.	
<b>GII non4</b>	<b>656</b>	<b>0.28 (0.24-0.32)</b>	<b>467</b>	<b>0.44 (0.39-0.49)</b>	<b>71</b>	<b>0.31 (0.21-0.43)</b>	<b>190</b>	<b>0.28 (0.22-0.35)</b>	<b>602</b>	<b>0.25 (0.21-0.29)</b>	<b>23</b>	<b>0.56 (0.33-0.77)</b>	<b>46</b>	<b>0.82 (0.64-0.94)</b>
II.1	17	0.57 (0.32-0.80)	50	0.52 (0.38-0.67)	0		3	0.40 (0.07-0.80)	208	0.18 (0.13-0.24)	2	0.26 (0.01-0.71)	3	0.33 (0.01-0.84)
II.2	72	0.25 (0.14-0.38)	39	0.56 (0.39-0.72)	7	0.33 (0.09-0.65)	22	0.37 (0.16-0.53)	47	0.18 (0.07-0.32)	7	0.50 (0.15-0.85)	5	0.80 (0.39-0.99)

Profile	FBVE/Noronet 1999-2012				ESR-EpiSurv 2008-2012				CaliciNet 2009-2012		Systematic literature review			
	P-type (n=4580)		C- type (n=2196)		P-type (n=685)		C-type (n=813)		C-type (n=3094)		P-type (n=107)		C-type (n=127)	
Group Type	N	Proportion FB (95%CI)	N	Proportion FB (95%CI)	N	Proportion FB (95%CI)	N	Proportion FB (95%CI)	N	Proportion FB (95%CI)	N	Proportion FB (95%CI)	N	Proportion FB (95%CI)
II.3	5	0.33 (0.05-0.72)	142	0.21 (0.13-0.30)	0		48	0.22 (0.11-0.35)	22	0.31 (0.13-0.54)	10	0.62 (0.29-0.90)	11	0.80 (0.39-0.99)
II.5	5	0.20 (0.01-0.60)	3	0.80 (0.40-0.99)	1	0.67 (0.16-0.99)	2	0.50 (0.09-0.91)	4	0.80 (0.40-0.99)	2	0.50 (0.10-0.91)	3	n.a.
II.6*	2	0.25 (0.01-0.71)	93	0.53 (0.41-0.65)	1	0.66 (0.15-0.99)	59	0.20 (0.10-0.31)	128	0.28 (0.20-0.37)	0		7	0.67 (0.29-0.95)
II.7	195	0.27 (0.19-0.35)	71	0.64 (0.48-0.78)	3	0.50 (0.09-0.91)	27	0.41 (0.23-0.60)	66	0.29 (0.17-0.42)	1	0.33 (0.01-0.95)	7	0.86 (0.55-1.00)
II.8	9	0.50 (0.21-0.78)	4	0.80 (0.40-0.99)	0		0		0		0		2	0.67 (0.15-0.99)
II.10	0		1	0.33 (0.01-0.84)	0		0		0		0		1	0.67 (0.16-0.99)
II.12	14	0.46 (0.18-0.74)	30	0.46 (0.26-0.66)	16	0.31 (0.12-0.56)	17	0.53 (0.30-0.75)	98	0.42 (0.30-0.55)	1	0.67 (0.17-0.99)	0	
II.13	0		14	0.54 (0.28-0.79)	0		7	0.22 (0.03-0.54)	19	0.07 (0.00-0.25)	0		0	
II.14	0		9	0.38 (0.10-0.71)	0		1	0.67 (0.16-0.99)	3	0.50 (0.10-0.91)	0		1	n.a.
II.15	5	0.25 (0.01-0.71)	0		0		0		0		0		1	0.67 (0.16-0.99)
II.16	3	0.75 (0.29-0.99)	2	0.33 (0.01-0.84)	8	0.30 (0.07-0.60)	0		3	0.50 (0.10-0.90)	0		0	
II.17	8	0.50 (0.21-0.79)	2	0.25 (0.01-0.71)	0		0		3	n.a.	0		0	
II.20	4	0.33 (0.29-0.84)	6	0.38 (0.10-0.71)	4	0.34 (0.05-0.71)	4	0.34 (0.05-0.71)	0		0		0	
II.21	0		0		0		0		1	0.16 (0.05-0.32)	0		0	
II.22	2	0.75 (0.29-0.99)	0		1	0.33 (0.01-0.84)	0		0		0		0	
II.b	213	0.24 (0.18-0.30)	n.a.		14	0.13 (0.02-0.34)	0	n.a.	0		0		n.a.	
II.c	0		n.a.		14	0.57 (0.32-0.81)	0	n.a.	0		0		n.a.	
II.g	100	0.30 (0.21-0.40)	n.a.		3	0.40 (0.07-0.81)	0	n.a.	0		0		n.a.	
II.m	1	0.67 (0.15-0.99)	n.a.		0		0	n.a.	0		0		n.a.	
nonGII.4	971	0.30 (0.27-0.34)	636	0.46 (0.41-0.51)	127	0.29 (0.22-0.38)	256	0.29 (0.22-0.38)	924	0.26 (0.23-0.30)	38	0.63 (0.46-0.80)	60	0.87 (0.74-0.96)
GII.4***	3595	0.08 (0.07-0.09)	1528	0.19 (0.16-0.21)	547	0.09 (0.07-0.12)	546	0.09 (0.07-0.12)	2139	0.12 (0.10-0.14)	59	0.31 (0.18-0.45)	45	0.75 (0.52-0.92)
Mixed outbreak	14	0.71 (0.46-0.91)	31	0.81 (0.64-0.93)	11	0.46 (0.21-0.72)	11	0.46 (0.22-0.72)	31	0.16 (0.05-0.33)	10	0.63 (0.29-0.90)	22	0.88 (0.68-0.98)

\* Region B does not well distinguish between the polymerase of GII.6/7/8.

\*\* Estimates in green fonts do not statistically differ, i.e. 95% confidence intervals overlap, with FBVE/Noronet polymerase proportions as a reference; estimates given in red fonts do statistically differ.

\*\*\*II.e is seen with the new variant II.4-Sydney capsid and thereby it is unclear whether this polymerase-based genotype should be considered a II.4 or II-non-4 genotype. This II.e polymerase genotype was included in the II.4 group in the polymerase profile, since it statistically showed most correspondence to the II-4 group.

## Systematic Literature Review Update

1. Historical perspective: norovirus gastroenteritis outbreaks in military forces. *Medical Surveillance Monthly Report*. 2011;18:7–8. [PubMed](#)  
[http://www.afhsc.mil/documents/pubs/msmrs/2011/v18\\_n11.pdf#Page=7](http://www.afhsc.mil/documents/pubs/msmrs/2011/v18_n11.pdf#Page=7)
2. Outbreak surveillance. *New Zealand Public Health Surveillance Report*. 2011;9:5.  
[https://surv.esr.cri.nz/PDF\\_surveillance/NZPHSR/2011/NZPHSR2011June.pdf](https://surv.esr.cri.nz/PDF_surveillance/NZPHSR/2011/NZPHSR2011June.pdf)
3. Outbreak case reports: Norovirus outbreak linked to consumption of imported raw oysters. *New Zealand Public Health Surveillance Report*. 2011;9:7–8.
4. Ahmed SF, Klena JD, Mostafa M, Dogantemur J, Middleton T, Hanson J, et al. Viral gastroenteritis associated with genogroup II norovirus among U.S. military personnel in Turkey, 2009. *PLoS ONE*. 2012;7:e35791. [PubMed](#) <http://dx.doi.org/10.1371/journal.pone.0035791>
5. Alfano-Sobsey E, Sweat D, Hall A, Breedlove F, Rodriguez R, Greene S, et al. Norovirus outbreak associated with undercooked oysters and secondary household transmission. *Epidemiol Infect*. 2012;140:276–82. [PubMed](#) <http://dx.doi.org/10.1017/S0950268811000665>
6. Arvelo W, Sosa SM, Juliao P, Lopez MR, Estevez A, Lopez B, et al. Norovirus outbreak of probable waterborne transmission with high attack rate in a Guatemalan resort. *J Clin Virol*. 2012;55:8–11. [PubMed](#) <http://dx.doi.org/10.1016/j.jcv.2012.02.018>
7. Baker K, Morris J, McCarthy N, Saldana L, Lowther J, Collinson A, et al. An outbreak of norovirus infection linked to oyster consumption at a UK restaurant, February 2010. *J Public Health (Oxf)*. 2011;33:205–11. [PubMed](#) <http://dx.doi.org/10.1093/pubmed/fdq089>
8. Breitenmoser A, Fretz R, Schmid J, Besl A, Etter R. Outbreak of acute gastroenteritis due to a washwater-contaminated water supply, Switzerland, 2008. *J Water Health*. 2011;9:569–76. [PubMed](#) <http://dx.doi.org/10.2166/wh.2011.158>
9. Brucker R, Bui T, Kwan-Gett T, Stewart L, Hall AJ, Kinzer MH. Norovirus infections associated with frozen raw oysters - Washington, 2011. *MMWR Morb Mortal Wkly Rep* 2012;61:110. [PubMed](#)  
<http://www.cdc.gov/mmwr/PDF/wk/mm6106.pdf>
10. Carpentier M, Ollivro J, Baron R, Le Galudec M, Fauchier C, Minoui-Tran A, et al. Investigation and control of a nosocomial norovirus outbreak in a long-term care facility. *Infect Control Hosp Epidemiol*. 2011;32:1052–5. [PubMed](#) <http://dx.doi.org/10.1086/662017>

11. Chapman AS, Witkop CT, Escobar JD, Schlorman CA, DeMarcus LS, Marmer LM, et al. Norovirus outbreak associated with person-to-person transmission, U.S. Air Force Academy, July 2011. *Medical Surveillance Monthly Report*. 2011;18:2–5. [PubMed](#)  
[http://www.afhsc.mil/documents/pubs/msmrs/2011/v18\\_n11.pdf#Page=2](http://www.afhsc.mil/documents/pubs/msmrs/2011/v18_n11.pdf#Page=2)
12. Chitambar S, Gopalkrishna V, Chhabra P, Patil P, Verma H, Lahon A, et al. Diversity in the enteric viruses detected in outbreaks of gastroenteritis from Mumbai, Western India. *Int J Environ Res Public Health*. 2012;9:895–915. [PubMed](#) <http://dx.doi.org/10.3390/ijerph9030895>
13. Collier DA, Bayles MK, Barret JP. Acute gastroenteritis outbreak at the Armed Forces Retirement Home, Washington, DC, January 2011. *Medical Surveillance Monthly Report*. 2011;18:11–4. [PubMed](#) [http://www.afhsc.mil/documents/pubs/msmrs/2011/v18\\_n06.pdf#Page=11](http://www.afhsc.mil/documents/pubs/msmrs/2011/v18_n06.pdf#Page=11)
14. Cooper T, Atta M, Mackay A, Roberts H, Clement A. A major outbreak of Norovirus in an acute NHS hospital in 2010: a practical management approach. *Journal of Infection Prevention*. 2011;12:111–8. <http://dx.doi.org/10.1177/1757177411402528>
15. de Laval F, Nivoix P, Pommier de Santi V, Caballe D, Garnotel E, Maslin J. Severe norovirus outbreak among soldiers in the field: foodborne followed by person-to-person transmission. *Clin Infect Dis*. 2011;53:399–400. [PubMed](#) <http://dx.doi.org/10.1093/cid/cir380>
16. Di Bartolo I, Monini M, Losio MN, Pavoni E, Lavazza A, Ruggeri FM. Molecular characterization of noroviruses and rotaviruses involved in a large outbreak of gastroenteritis in Northern Italy. *Appl Environ Microbiol*. 2011;77:5545–8. [PubMed](#) <http://dx.doi.org/10.1128/AEM.00278-11>
17. Doménech-Sánchez A, Juan C, Perez JL, Berrocal CI. Unmanageable norovirus outbreak in a single resort located in the Dominican Republic. *Clin Microbiol Infect*. 2011;17:952–4. [PubMed](#)  
<http://dx.doi.org/10.1111/j.1469-0691.2010.03411.x>
18. Donia D, Kota M, Leno L, Ylli A, Cenko F, Divizia M. First outbreak of norovirus in Albania. *Lett Appl Microbiol*. 2011;53:283–7. [PubMed](#) <http://dx.doi.org/10.1111/j.1472-765X.2011.03104.x>
19. Gonzaga VE, Ramos M, Maves RC, Freeman R, Montgomery JM. Concurrent outbreak of norovirus genotype I and enterotoxigenic *Escherichia coli* on a U.S. Navy ship following a visit to Lima, Peru. [Electronic Resource]. *PLoS ONE*. 2011;6:e20822. [PubMed](#)  
<http://dx.doi.org/10.1371/journal.pone.0020822>
20. Guzman-Herrador B, Heier B, Osborg E, Nguyen V, Vold L. Outbreak of norovirus infection in a hotel in Oslo, Norway, January 2011. *Euro Surveill*. 2011;16:5–9. [PubMed](#)  
<http://www.eurosurveillance.org/images/dynamic/EE/V16N30/V16N30.pdf>

21. Hoefnagel J, van de Weerd DH, Schaefer O, Koene R. A norovirus outbreak triggered by copper intoxication on a coach trip from the Netherlands to Germany, April 2010. *Euro Surveill.* 2012;17:20120301. [PubMed](#)
22. Kasper MR, Lescano AG, Lucas C, Gilles D, Biese BJ, Stolovitz G, et al. Diarrhea outbreak during U.S. military training in El Salvador. [Electronic Resource]. *PLoS ONE.* 2012;7:e40404. [PubMed](#)  
<http://dx.doi.org/10.1371/journal.pone.0040404>
23. Kirk MD, Lalor K, Raupach J, Combs B, Stafford R, Hall GV, et al. Food-and waterborne disease outbreaks in Australian long-term care facilities, 2001-2008. *Foodborne Pathog Dis.* 2011;8:133–9. [PubMed](#) <http://dx.doi.org/10.1089/fpd.2010.0648>
24. OzFoodNet Working Group. OzFoodNet quarterly report, 1 October to 31 December 2010. *Commun Dis Intell Q Rep.* 2011;35:29–37. [PubMed](#)
25. Laine J, Huovinen E, Virtanen MJ, Snellman M, Lumio J, Ruutu P, et al. An extensive gastroenteritis outbreak after drinking-water contamination by sewage effluent, Finland. *Epidemiol Infect.* 2011;139:1105–13. [PubMed](#) <http://dx.doi.org/10.1017/S0950268810002141>
26. Lee LE, Cebelinski EA, Fuller C, Keene WE, Smith K, Vinje J, et al. Sapovirus outbreaks in long-term care facilities, Oregon and Minnesota, USA, 2002-2009. *Emerg Infect Dis.* 2012;18:873–6. [PubMed](#) <http://dx.doi.org/10.3201/eid1805.111843>
27. Mayet A, Andreo V, Bedubourg G, Victorion S, Plantec J, Soullie B, et al. Food-borne outbreak of norovirus infection in a French military parachuting unit, April 2011. *Euro Surveill.* 2011;16:2–4. [PubMed](#) <http://www.eurosurveillance.org/ViewArticle.aspx?ArticleId=19930>
28. Nenonen NP, Hannoun C, Larsson CU, Bergstrom T. Marked genomic diversity of norovirus genogroup I strains in a waterborne outbreak. *Appl Environ Microbiol.* 2012;78:1846–52. [PubMed](#) <http://dx.doi.org/10.1128/AEM.07350-11>
29. Nguyen LM, Middaugh JP. Suspected transmission of norovirus in eight long-term care facilities attributed to staff working at multiple institutions. *Epidemiol Infect.* 2012;140:1702–9. [PubMed](#)  
<http://dx.doi.org/10.1017/S0950268811002573>
30. Nicolay N, McDermott R, Kelly M, Gorby M, Prendergast T, Tuite G, et al. Potential role of asymptomatic kitchen food handlers during a food-borne outbreak of norovirus infection, Dublin, Ireland, March 2009. *Euro Surveill.* 2011;16:10–15. [PubMed](#)
31. Partridge DG, Evans CM, Raza M, Kudesia G, Parsons HK. Lessons from a large norovirus outbreak: impact of viral load, patient age and ward design on duration of symptoms and shedding and

- likelihood of transmission. *J Hosp Infect.* 2012;81:25–30. [PubMed](#)  
<http://dx.doi.org/10.1016/j.jhin.2012.02.002>
32. Repp KK, Keene WE. A point-source norovirus outbreak caused by exposure to fomites. *J Infect Dis.* 2012;205:1639–41. [PubMed](#) <http://dx.doi.org/10.1093/infdis/jis250>
33. Riera-Montes M, Brus Sjolander K, Allestam G, Hallin E, Hedlund KO, Lofdahl M. Waterborne norovirus outbreak in a municipal drinking-water supply in Sweden. *Epidemiol Infect.* 2011;139:1928–35. [PubMed](#) <http://dx.doi.org/10.1017/S0950268810003146>
34. Sarvikivi E, Roivainen M, Maunula L, Niskanen T, Korhonen T, Lappalainen M, et al. Multiple norovirus outbreaks linked to imported frozen raspberries. *Epidemiol Infect.* 2012;140:260–7. [PubMed](#) <http://dx.doi.org/10.1017/S0950268811000379>
35. Smith AJ, McCarthy N, Saldana L, Ihekweazu C, McPhedran K, Adak GK, et al. A large foodborne outbreak of norovirus in diners at a restaurant in England between January and February 2009. *Epidemiol Infect.* 2012;140:1695–701. [PubMed](#) <http://dx.doi.org/10.1017/S0950268811002305>
36. Sukhrie FHA, Teunis P, Vennema H, Copra C, Beersma MFCT, Bogerman J, et al. Nosocomial transmission of norovirus is mainly caused by symptomatic cases. *Clin Infect Dis.* 2012;54:931–7. [PubMed](#) <http://dx.doi.org/10.1093/cid/cir971>
37. Takanashi S, Wang Q, Chen N, Shen Q, Jung K, Zhang Z, et al. Characterization of emerging GII.g/GII.12 noroviruses from a gastroenteritis outbreak in the United States in 2010. *J Clin Microbiol.* 2011;49:3234–44. [PubMed](#) <http://dx.doi.org/10.1128/JCM.00305-11>
38. Thornley CN, Emslie NA, Sprott TW, Greening GE, Rapana JP. Recurring norovirus transmission on an airplane. *Clin Infect Dis.* 2011;53:515–20. [PubMed](#) <http://dx.doi.org/10.1093/cid/cir465>
39. Učakar V, Grilc E, Jeraj I. An investigation of a waterborne outbreak caused by microbiological contamination of the drinking water supply system. *Slovenian Journal of Public Health.* 2012;51:112–9. <http://dx.doi.org/10.2478/v10152-012-0013-0> published online April 3.
40. Vantarakis A, Mellou K, Spala G, Kokkinos P, Alamanos Y. A gastroenteritis outbreak caused by noroviruses in Greece. *Int J Environ Res Public Health.* 2011;8:3468–78. [PubMed](#)  
<http://dx.doi.org/10.3390/ijerph8083468>
41. Vinnard C, Lee I, Linkin D. Successful control of a norovirus outbreak among attendees of a hospital teaching conference. *Am J Infect Control.* 2012;40:73–4. [PubMed](#)  
<http://dx.doi.org/10.1016/j.ajic.2011.03.033>

42. Wall R, Dymond N, Bell A, Thornley C, Buik H, Cumming D, et al. Two New Zealand outbreaks of norovirus gastroenteritis linked to commercially farmed oysters. *N Z Med J.* 2011;124:63–71.  
[PubMed](#)
43. Yang Z, Wu X, Li T, Li M, Zhong Y, Liu Y, et al. Epidemiological survey and analysis on an outbreak of gastroenteritis due to water contamination. *Biomed Environ Sci.* 2011;24:275–83.  
[PubMed](#)
44. Yap J, Qadir A, Liu I, Loh J, Tan BH, Lee VJ. Outbreak of acute norovirus gastroenteritis in a military facility in Singapore: A public health perspective. *Singapore Med J.* 2012;53:249–54.  
[PubMed](#)