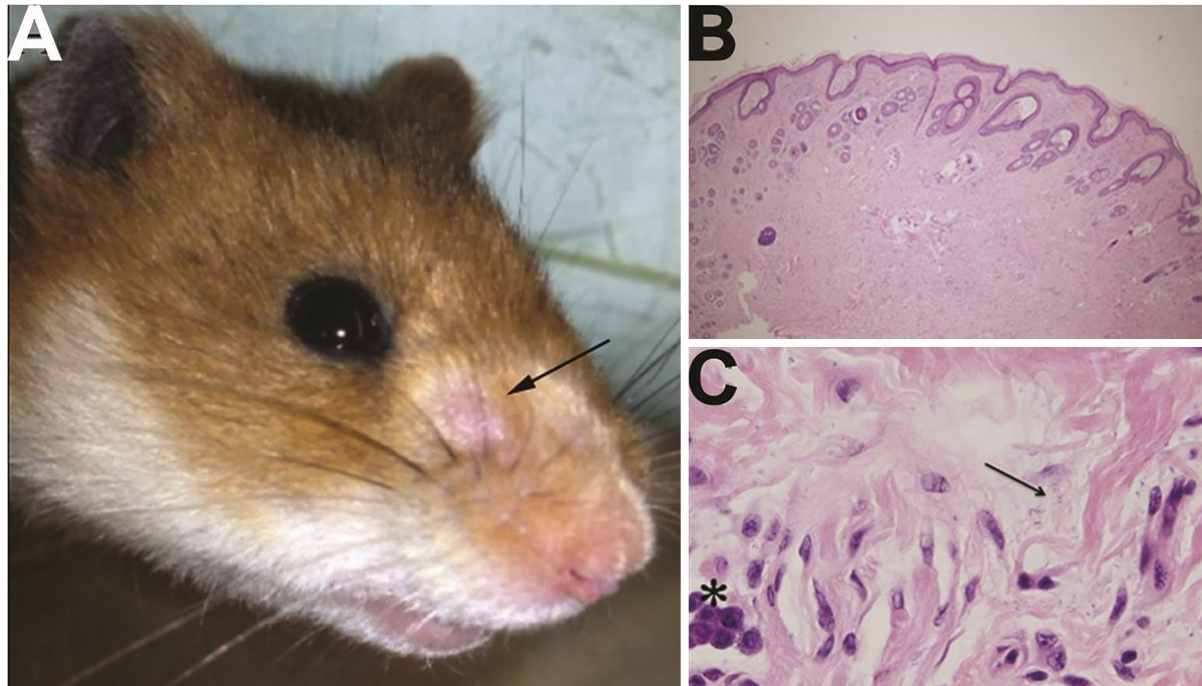


# Vectorborne Transmission of *Leishmania infantum* from Hounds, United States

## Technical Appendix



**Technical Appendix Figure.** A) Photograph of rostral portion of hamster no. 5, on which 2 sandflies infected with US foxhound strain of *Leishmania infantum* had fed; image taken 4 months after sandfly feeding. Arrow indicates skin lesion consistent with leishmaniasis. B) Histologic image of hematoxylin and eosin–stained cutaneous lesion demonstrating inflammation of the dermis with macrophage and mast cell infiltration. Original magnification  $\times 100$  with oil. C) Histologic image of hematoxylin and eosin–stained cutaneous lesion. Rod-shaped bacteria (arrow) within the deep dermis and mast cell (asterisk) infiltrates. Original magnification  $\times 100$  with oil.