

2. Al-Sabi MNS, Chriél M, Jensen TH, Enemark HL. Endoparasites of the raccoon dog (*Nyctereutes procyonoides*) and the red fox (*Vulpes vulpes*) in Denmark 2009–2012—a comparative study. *Int J Parasitol Parasites Wildl.* 2013;2:144–51. <http://dx.doi.org/10.1016/j.ijppaw.2013.04.001>
3. Riehn K, Hamedy A, Große K, Zeitler L, Lückner E. A novel detection method for *Alaria alata* mesocercariae in meat. *Parasitol Res.* 2010;107:213–20. <http://dx.doi.org/10.1007/s00436-010-1853-7>
4. Shoop WL, Corkum KC. Maternal transmission by *Alaria marcianae* and the concept of amphiparatenesis. *J Parasitol.* 1987; 73:110–5. <http://dx.doi.org/10.2307/3282354>
5. Eckert J, Deplazes P, Craig P, Gemmell M, Gottstein B, Heath D, et al. Echinococcosis in animals: clinical aspects, diagnosis and treatment. WHO/OIE manual on echinococcosis in humans and animals: a public health problem of global concern. 2001:73–99. <http://apps.who.int/iris/bitstream/10665/42427/1/929044522X.pdf>
6. Castro O, Venzal JM, Felix ML. Two new records of helminth parasites of domestic cat from Uruguay: *Alaria alata* (Goeze, 1782) (Digenea, Diplostomidae) and *Lagochilascaris major* Leiper, 1910 (Nematoda, Ascarididae). *Vet Parasitol.* 2009;160:344–7. <http://dx.doi.org/10.1016/j.vetpar.2008.11.019>
7. Lucio-Forster A, Bowman DD. Prevalence of fecal-borne parasites detected by centrifugal flotation in feline samples from two shelters in upstate New York. *J Feline Med Surg.* 2011;13:300–3. <http://dx.doi.org/10.1016/j.jfms.2010.12.013>
8. Ozeretskovskaya NN, Mikhailova LG, Sabgaida TP, Dovgalev AS. New trends and clinical patterns of human trichinellosis in Russia at the beginning of the XXI century. *Vet Parasitol.* 2005;132:167–71. <http://dx.doi.org/10.1016/j.vetpar.2005.05.056>
9. Bowles J, Blair D, McManus DP. Genetic variants within the genus *Echinococcus* identified by mitochondrial DNA sequencing. *Mol Biochem Parasitol.* 1992;54:165–73. [http://dx.doi.org/10.1016/0166-6851\(92\)90109-W](http://dx.doi.org/10.1016/0166-6851(92)90109-W)
10. Tamura K, Stecher G, Peterson D, Filipski A, Kumar S. MEGA6: molecular evolutionary genetics analysis version 6.0. *Mol Biol Evol.* 2013;30:2725–9. <http://dx.doi.org/10.1093/molbev/mst197>

Address for correspondence: Heidi L Enemark, Norwegian Veterinary Institute, PO Box 750 Sentrum, NO-0106 Oslo, Norway; email: heidi.enemark@vetinst.no

## Human Infections with *Pseudoterranova cattani* Nematodes, Chile

Thomas Weitzel,<sup>1</sup> Hiromu Sugiyama, Hiroshi Yamasaki, Cristian Ramirez, Reinaldo Rosas, Rubén Mercado<sup>1</sup>

Author affiliations: Clínica Alemana-Universidad del Desarrollo, Santiago, Chile (T. Weitzel, R. Rosas); National Institute of Infectious Diseases, Tokyo, Japan (H. Sugiyama, H. Yamasaki); Universidad Mayor, Santiago (C. Ramirez); Universidad de Chile, Santiago (R. Mercado)

DOI: <http://dx.doi.org/10.3201/eid2110.141848>

**To the Editor:** Anisakidosis is an emerging foodborne zoonosis caused by nematode larvae of the Anisakinae

subfamily, which includes the genera *Anisakis*, *Pseudoterranova*, and *Contracecum* (1). In natural cycles, anisakid larvae are transmitted to marine mammals or piscivorous birds when they eat raw saltwater fish or squid. In the human incidental host, larvae attach to the mucosa of the gastrointestinal tract, causing clinical features ranging from asymptomatic carriage to severe abdominal pain with complications, such as gastric perforation (2). Microscopical diagnosis is hampered by the lack of distinguishing morphologic characteristics in larval stages (1). Recently, molecular genetic techniques have shown that the main species, *Anisakis simplex* and *Pseudoterranova decipiens*, are in fact species groups with distinct geographic and biologic characteristics (3,4). The *P. decipiens* complex consists of at least 6 sibling species (online Technical Appendix Table, <http://wwwnc.cdc.gov/EID/article/21/10/14-1848-Techapp1.pdf>). We report 4 human infections with *P. cattani* diagnosed during 2012–2014.

The case-patients were adults 22–59 years of age; 2 were female, and all lived in Santiago, Chile. Additional anamnestic and clinical data were available for 3 patients: all spontaneously regurgitated the parasites without having other gastrointestinal complaints. All 3 reported eating ceviche, a dish made of raw marine fish marinated in lemon juice. One patient reported a tingling sensation and coughs before the expulsion of a highly motile larva (Video, <http://wwwnc.cdc.gov/article/21/10/14-1848-V1.htm>). This patient was awaiting oral surgery after a bicycle accident and had eaten the last raw fish dish 2 weeks previously. Initially, parasites were identified by morphologic criteria. Larvae were 20 mm long, were of whitish to reddish color, and had 3 anterior lips (online Technical Appendix Figure 1). Because of the presence of an anteriorly directed cecum (online Technical Appendix Figure 2), they were assigned to *Pseudoterranova* species.

For further molecular identification, DNA samples were extracted by using a DNeasy Blood and Tissue Kit (QIAGEN K.K., Tokyo, Japan). The rRNA gene containing 2 internal transcribed spacer (ITS) regions was amplified by PCR using primers NC5 and NC2, as previously described (5). PCR products were sequenced by using a BigDye Terminator Cycle Sequencing Kit (Applied Biosystems Inc., Foster City, CA, USA) on an automated sequencer (ABI3100, Applied Biosystems). Sequence similarities were determined by a BLAST search of DDBJ (<http://blast.ddbj.nig.ac.jp/top-j.html>). The GENETYX-WIN program version 7.0 (Software Development Co., Tokyo, Japan) facilitated sequence alignment and comparison. Within the 4 ITS sequences of amplicons obtained, all were 100% identical, and alignment with the other *P. cattani* sequence differed only in 1 nt. ITS sequences of 2 isolates are available in GenBank (accession nos. KF781284 and KF781285). All *P. cattani* sequences showed a previously described

<sup>1</sup>These authors contributed equally to this article.

**Table.** Alignment (comparison) of nucleotide sequences of the ITS1 gene of *Pseudoterranova cattani* and the Chilean specimen and *P. decipiens*\*

Isolate	ITS1 sequence at 240–270 nt	GenBank accession no.
Pc1	CTCTGTT-----AACGCAGAGT	AJ413981
CL#3	CTCTGTT-----AACGCAGAGT	KF781284
PdCa1	CTCTGTTTGGTTTCAACGCTAACGCAGAGT	AJ413979

\*CL#3, specimen from Chile; Pc1; ITS, internal transcribed spacer. Pc1, *P. cattani*; PdCa1, *P. decipiens*.

deletion of  $\approx 14$  bases (Table), which is not observed in other members of the *P. decipiens* species complex (5).

This study identified *P. cattani* as a parasite capable of infecting humans. The definitive natural host of this parasite is the South American sea lion, *Otaria byronia*. At least 4 species of coastal fish were described as intermediate or paratenic hosts, including popular Chilean food fish species, such as *Merluccius gayi*, *Genypterus maculatus*, and *Cilus gilberti* (6). The spectrum of species causing human pseudoterranovosis is uncertain because most cases were reported as *P. decipiens* (sensu lato) or *Pseudoterranova* sp. Only recently, 1 case of *P. azarasi* infection has been documented in a patient from Japan (7). Although comparative studies are lacking, *Pseudoterranova* larvae seem to be less invasive and cause milder symptoms than *Anisakis* larvae (2,8). In the cases reported here, larvae were spontaneously expelled without further symptoms, except in 1 patient who reported the typical feature of noninvasive pseudoterranovosis, also described as “tingling throat syndrome” (8), a foreign body sensation accompanied by cough and retching. In Chile,  $\approx 30$  human cases have been reported, all diagnosed as *P. decipiens* or *Pseudoterranova* sp. by morphologic criteria (9,10). Most patients described mild oropharyngeal complaints and cough. More severe manifestations similar to parasitic pharyngitis caused by *Fasciola hepatica* or *Linguatula serrata* seem to be absent, although 1 patient had symptoms of asphyxia (9). The extent to which these cases in Chile were caused by *P. cattani* is uncertain because molecular diagnosis was not performed. The length of stay and location within the human gastrointestinal tract of *Pseudoterranova* larvae are unknown, but as indicated by 1 case in our report, lack of symptoms for up to 2 weeks is possible.

These cases demonstrate that *P. cattani* is an incidental human parasite causing oropharyngeal pseudoterranovosis. To better understand the epidemiology and clinical relevance of these emerging fishborne zoonotic infections, molecular diagnostic techniques need to be more widely applied, especially in regions where raw fish is part of the regular diet, such as in many parts of South America.

#### Acknowledgments

We thank M. Muto and S. Ichimura for technical assistance.

This work was supported in part by Fondo Nacional de Desarrollo Científico y Tecnológico grant 1121035 to R.M. and grants-in-aids for Scientific Research from the Ministry of Health, Labour and Welfare, Japan to H.S. and H.Y. (no. H24-25-Shinko-Ippan-014).

#### References

- Chai JY, Darwin Murrell K, Lymbery AJ. Fish-borne parasitic zoonoses: status and issues. *Int J Parasitol.* 2005;35:1233–54. <http://dx.doi.org/10.1016/j.ijpara.2005.07.013>
- Hochberg NS, Hamer DH. Anisakidosis: perils of the deep. *Clin Infect Dis.* 2010;51:806–12. <http://dx.doi.org/10.1086/656238>
- Mattiucci S, Nascetti G. Advances and trends in the molecular systematics of anisakid nematodes, with implications for their evolutionary ecology and host–parasite co-evolutionary processes. *Adv Parasitol.* 2008;66:47–148. [http://dx.doi.org/10.1016/S0065-308X\(08\)00202-9](http://dx.doi.org/10.1016/S0065-308X(08)00202-9)
- Mattiucci S, Cipriani P, Webb SC, Paoletti M, Marcer F, Bellisario B, et al. Genetic and morphological approaches distinguish the three sibling species of the *Anisakis simplex* species complex, with a species designation as *Anisakis berlandi* n. sp. for *A. simplex* sp. C (Nematoda: Anisakidae). *J Parasitol.* 2014;100:199–214. <http://dx.doi.org/10.1645/12-120.1>
- Zhu XQ, D’Amelio S, Palm HG, Paggi L, George-Nascimento M, Gasser RB. SSCP-based identification of members within the *Pseudoterranova decipiens* complex (Nematoda: Ascaridoidea: Anisakidae) using genetic markers in the internal transcribed spacers of ribosomal DNA. *Parasitology.* 2002;124:615–23. <http://dx.doi.org/10.1017/S0031182002001579>
- George-Nascimento M, Urrutia X. *Pseudoterranova cattani* sp. nov. (Ascaridoidea: Anisakidae), a parasite of the South American sea lion *Otaria byronia* De Blainville from Chile. *Rev Chil Hist Nat.* 2000;73:93–8. <http://dx.doi.org/10.4067/S0716-078X2000000100010>
- Arizono N, Miura T, Yamada M, Tegoshi T, Onishi K. Human infection with *Pseudoterranova azarasi* roundworm. *Emerg Infect Dis.* 2011;17:555–6. <http://dx.doi.org/10.3201/eid1703.101350>
- Sakanari JA, McKerrow JH. Anisakiasis. *Clin Microbiol Rev.* 1989;2:278–84.
- Torres P, Jercic MI, Weitz JC, Dobrew EK, Mercado R. Human pseudoterranovosis, an emerging infection in Chile. *J Parasitol.* 2007;93:440–3. <http://dx.doi.org/10.1645/GE-946R.1>
- Jofré ML, Neira OP, Noemí HI, Cerva CJL. Pseudoterranovosis and sushi [in Spanish]. *Rev Chilena Infectol.* 2008;25:200–5. <http://dx.doi.org/10.4067/S0716-10182008000300010>

Address for correspondence: Rubén Mercado, Unidad Docente de Parasitología, Facultad de Medicina, Universidad de Chile, Av. Las Palmeras 299, Int. Parque Quinta Normal, Santiago, Chile; email: rmercado@med.uchile.cl

#### Table of Contents



## GovDelivery

Manage your email alerts so you only receive content of interest to you.

Sign up for an Online Subscription:

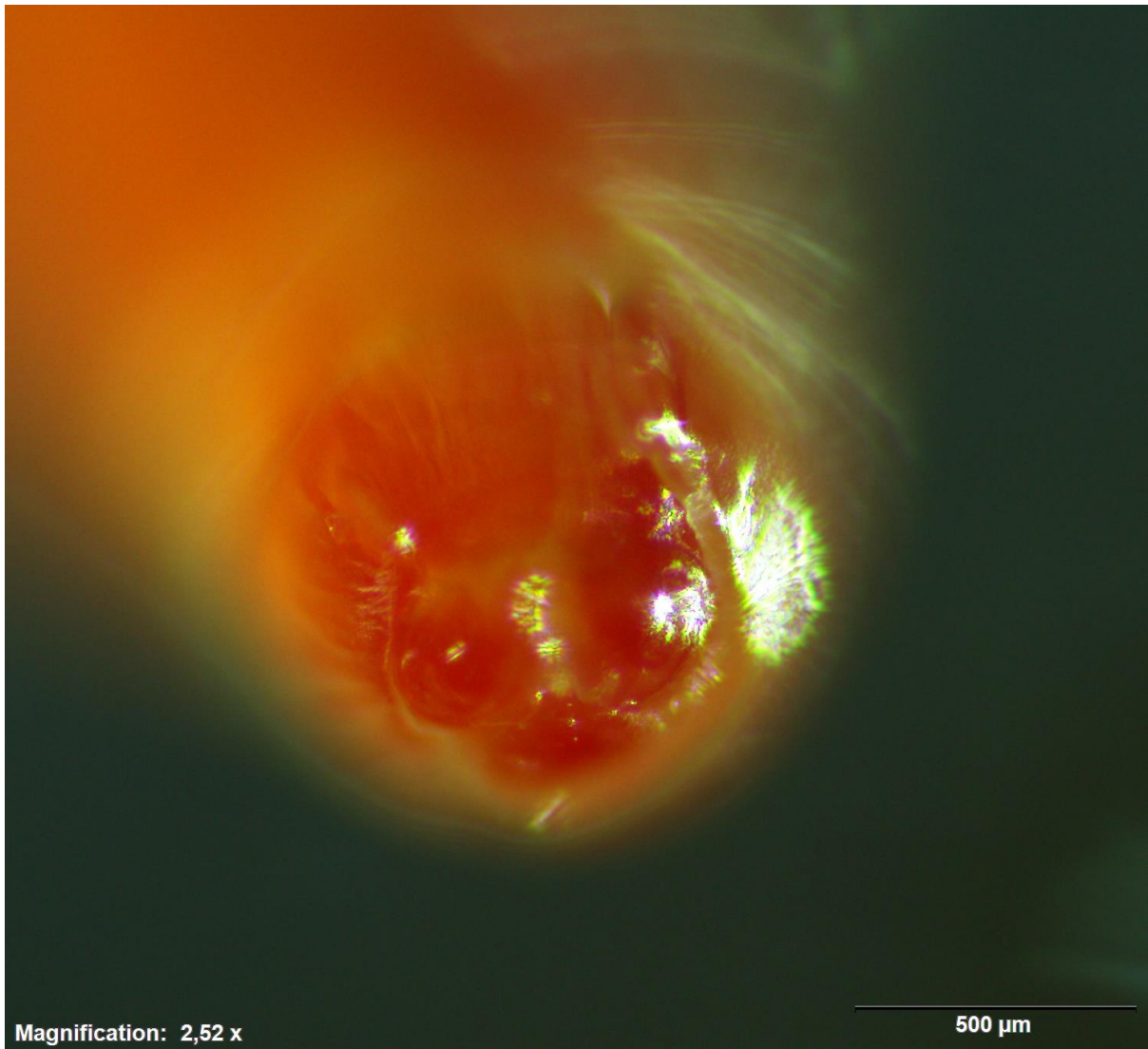
<http://wwwnc.cdc.gov/eid/subscribe.htm>

# Human Infections with *Pseudoterranova cattani* Nematodes, Chile

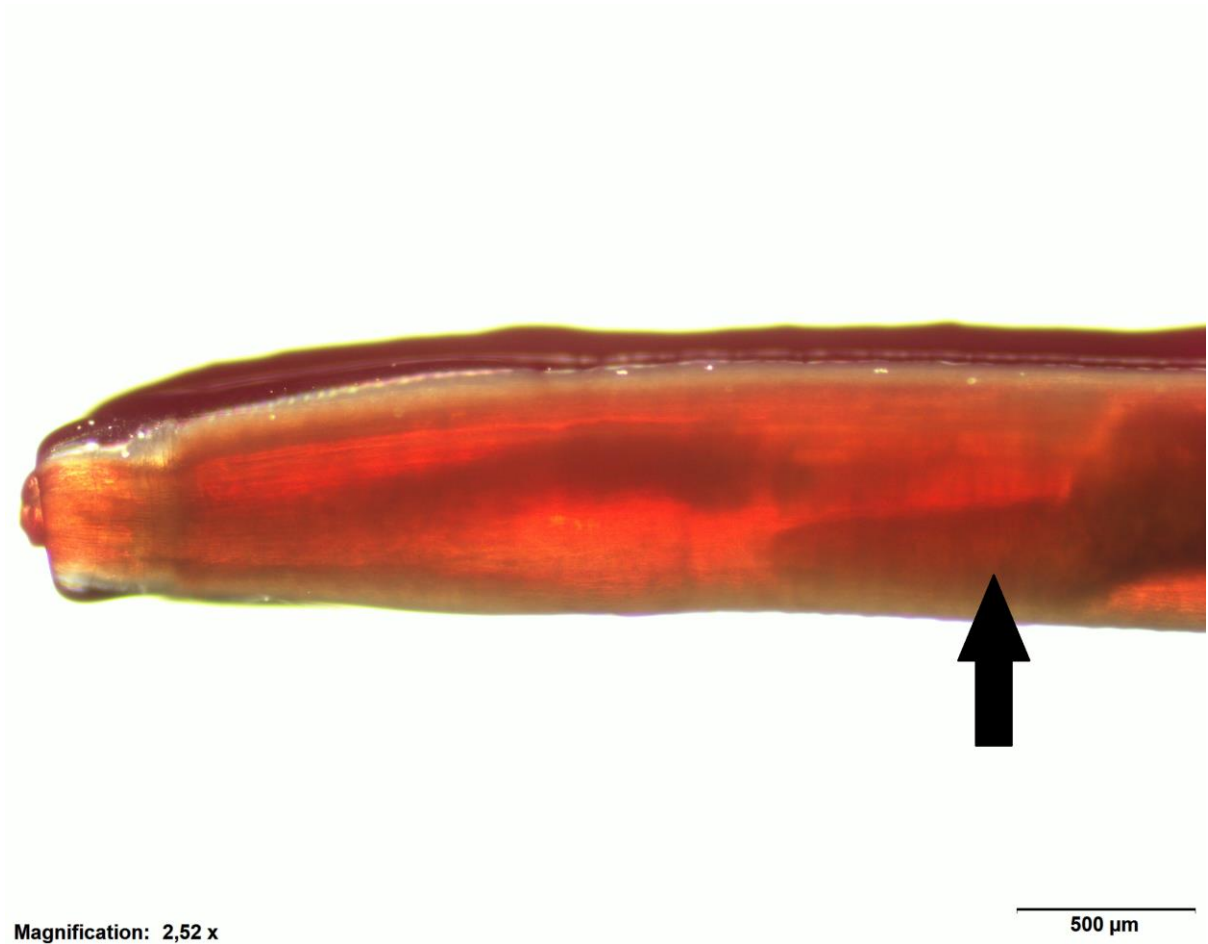
## Technical Appendix

**Technical Appendix Table.** Sibling species within the *Pseudoterranova decipiens* species complex and their geographic distribution

Species	Geographic distribution
<i>P. decipiens</i> (sensu stricto)	North Atlantic, Northeast Pacific
<i>P. bulbosa</i>	Northeast Atlantic, Northwest Pacific
<i>P. azarasi</i>	North Pacific
<i>P. krabbei</i>	Northeast Atlantic
<i>P. cattani</i>	Southeast Pacific
<i>P. decipiens</i> E	Antarctic and sub-Antarctic waters



**Technical Appendix Figure 1.** *Pseudoterranova cattani* larva with 3 anterior lips.



**Technical Appendix Figure 2.** Anterior part of *Pseudoterranova cattani* larva showing anteriorly directed cecum (arrow).