

Molecular Epidemiologic Source Tracking of Orally Transmitted Chagas Disease, Venezuela

Maikell Segovia, Hernán J. Carrasco, Clara E. Martínez, Louisa A. Messenger, Anaibeth Nessi, Juan C. Londoño, Raul Espinosa, Cinda Martínez, Mijares Alfredo, Rafael Bonfante-Cabarcas, Michael D. Lewis, Belkisyolé A. de Noya, Michael A. Miles, and Martin S. Llewellyn

Oral outbreaks of Chagas disease are increasingly reported in Latin America. The transitory presence of *Trypanosoma cruzi* parasites within contaminated foods, and the rapid consumption of those foods, precludes precise identification of outbreak origin. We report source attribution for 2 peri-urban oral outbreaks of Chagas disease in Venezuela via high resolution microsatellite typing.

Rapid urbanization presents new challenges for Chagas disease control in Latin America. Foci of disease are now reported in slums surrounding several Andean cities (1–3). Oral transmission is believed responsible for recent outbreaks of Chagas disease, most of which were characterized by atypically severe symptoms (4,5). Many cases have occurred in urban settings (5,6), amplifying the size and effect of the outbreaks.

Sources of orally transmitted disease outbreaks vary, but contaminated food and juices are often blamed. However, after a contaminated food is eaten, it may take weeks for the onset of clinical signs and symptoms, and direct molecular and cytological incrimination of a par-

Author affiliations: Universidad Central de Venezuela Instituto de Medicina Tropical, Caracas, Venezuela (M. Segovia, H.J. Carrasco, C.E. Martínez, A. Nessi, B.A. de Noya); London School of Hygiene and Tropical Medicine, London, UK (L.A. Messenger, M.D. Lewis, M.A. Miles, M.S. Llewellyn); Universidad Central de Venezuela, Caracas (J.C. Londoño); Instituto Venezolano de los Seguros Sociales, Caracas (R. Espinosa); Instituto Venezolano de Investigaciones Científicas, Caracas (M. Alfredo); Ministerio del Poder Popular para la Salud, Maracay, Estado Aragua, Venezuela (C. Martínez); and Universidad Centroccidental Lisandro Alvarado, Barquisimeto, Venezuela (R. Bonfante-Cabarcas)

DOI: <http://dx.doi.org/10.3201/eid1907.121576>

ticular batch of food/beverage has not been possible (5). Thus, evidence pointing to particular foodstuffs is often circumstantial.

Molecular epidemiologic analyses of human and environmental isolates are routinely used to track the source of outbreaks caused by foodborne pathogens. High-resolution molecular markers have been developed and validated for *Trypanosoma cruzi*, the parasite that causes Chagas disease (7,8). These markers, used in conjunction with careful sampling, can identify the source of foodborne outbreaks.

The Study

We studied 2 outbreaks of orally transmitted Chagas disease (120 cases, 5 deaths). The first occurred in Chichiriviche, Vargas State, a coastal community (population ≈800 persons) ≈50 km northwest of Caracas, Venezuela. The outbreak occurred at a primary school where food was prepared on site. In early April 2009, a total of 71 children (6–13 years of age) who attended the morning school shift and 14 adults became ill. Exposure of these persons to *T. cruzi* was established by use of IgM and IgG ELISA. Parasitemia was observed in 33 of the patients with serologic results positive for *T. cruzi* infection (9,10).

The second outbreak occurred in Antimano, a peri-urban slum southwest of central Caracas (online Technical Appendix Figure 1, wwwnc.cdc.gov/EID/article/19/7/12-1576-Techapp1.pdf). In May 2010, 35 patients with suspected *T. cruzi* infection were examined at Hospital Miguel Perez Carreno in Caracas. Patients reported that they regularly ate at the same local communal canteen. Among the patients tested, 15 were positive for *T. cruzi* IgM and IgG (9). Parasitemia in 14 patients was confirmed indirectly by hemoculture. Of the 35 patients, 21 (2 adults, 19 children) were hospitalized.

To enable outbreak source attribution, we undertook intensive additional sampling of contemporary, nonhuman sources local to each outbreak and of human and nonhuman sources from more distant localities throughout Venezuela. In total, 246 *T. cruzi* strains and clones were typed for 23 microsatellite markers (online Technical Appendix 1 Table) (8). A list of the samples and their sites of origin is in online Technical Appendix 2 (wwwnc.cdc.gov/EID/article/19/7/12-1576-Techapp1.xlsx).

Individual level sample clustering was defined first by constructing a neighbor joining tree based on pairwise distances between multilocus genotypes (Figure 1). A second analysis used *K*-means clustering and discriminant analysis of principal components (Figure 2) (11). To assess connectivity between human and nonhuman outbreak cases, pairwise genetic differentiation (F_{ST}) was calculated (Table 1). Population-level genetic diversity was assessed first by calculating allelic richness then private allele frequency

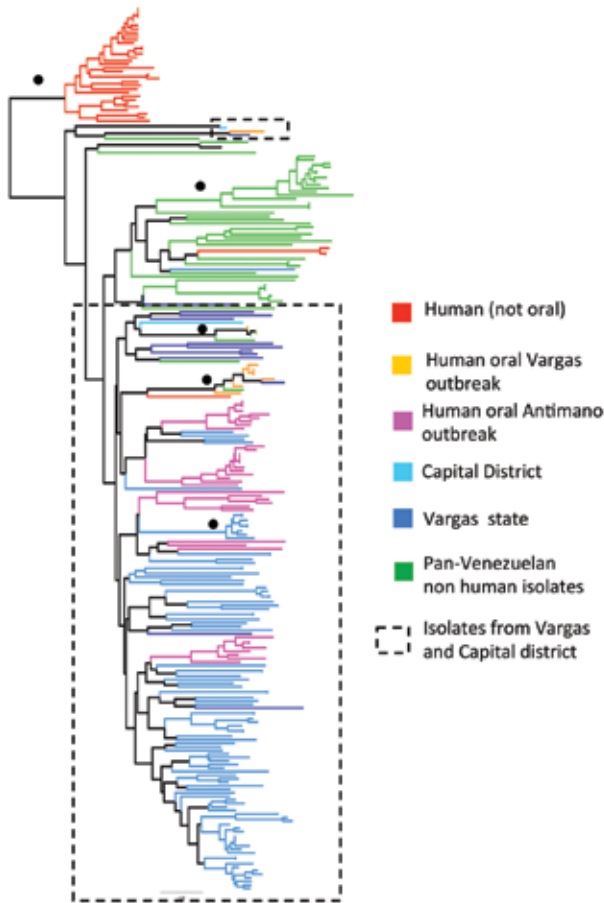


Figure 1. Unrooted neighbor joining tree showing genetic clustering among *Trypanosoma cruzi* isolates from 2 outbreaks of oral disease in northern Venezuela. Based on pairwise genetic distances (1 - proportion of shared alleles) between multilocus microsatellite profiles (23 loci) generated from 246 isolates and clones. Black circles indicate nodes with >60% bootstrap support. Branch color key is shown. Dashed boxes indicate isolates associated with the outbreaks.

over loci between each human–nonhuman population pair (Table 2). Geographic sampling distribution is shown in online Technical Appendix 1 Figure 2.

Clustering results determined by discriminant analysis of principal components and neighbor joining were broadly congruent. In the former, 19 clusters were defined; sample

allocations are included in online Technical Appendix 2. Substantial overlap existed between some clusters, especially those from Capital and Vargas States (e.g., those labeled “x” in Figure 2), while others were highly distinct (e.g., cluster 8 in Figure 2). Human isolates from both oral outbreaks are extremely distinct from non-orally transmitted isolates collected from humans throughout Venezuela. Almost all these presumably vector-transmitted strains are closely related to one another, despite their geographic dispersal (cluster 8 in Figure 2). By comparison, oral outbreak strains that were isolated a mere 50 km apart (clusters 2, 5, 7, 9, 15–17) are far more globally diverse. Unlike most human isolates in Venezuela, which are distinct from nonhuman strains, oral outbreak isolates are interspersed among nonhuman strains from Venezuela. Furthermore, samples from both outbreaks clustered among nonhuman strains local to that outbreak, clearly indicating a local origin. Oral samples from each outbreak are polyphyletic with respect to strains from their immediate environment, a finding consistent with multiple contamination events or multiclonal infection sources.

F_{ST} values further support connectivity between outbreak and local environmental samples in both Antimano and Chichiriviche (Table 1). A lack of private alleles between human and nonhuman isolates also supports a local source for the Chichiriviche outbreak (Table 2). F_{ST} values in the 4-way comparison between outbreak and local environmental strains are, however, somewhat equivocal with respect to the entire dataset (Table 1). Cluster analysis showed that the human and nonhuman strains from Chichiriviche interspersed with strains from other states in Venezuela (Figure 2). Thus, we cannot confirm a uniquely local origin for the Chichiriviche outbreak, despite a low value for F_{ST} , and it is possible that some contaminating strains originated elsewhere.

Conclusions

This study demonstrates the value of rigorous molecular epidemiologic analysis of orally transmitted *T. cruzi* outbreaks, including the importance of appropriate sampling to identify the origin of the infecting strains. The foodstuff that propagated the peri-urban outbreak in Antimano was certainly contaminated locally. An active nonhu-

Table 1. F_{ST} values in a 4-way comparison for differentiation between *Trypanosoma cruzi* isolates derived from humans and the local environment during an outbreak of orally transmitted Chagas disease in 2 areas of Venezuela*

Isolate, location	Human isolates from		Nonhuman isolates from	
	Antimano	Chichiriviche	Antimano	Chichiriviche
Human				
Antimano		0.000	0.000	0.000
Chichiriviche	0.201		0.000	0.004
Nonhuman				
Antimano	0.093	0.170		0.000
Chichiriviche	0.088	0.053	0.079	

*Lower left shows linearized F_{ST} (genetic differentiation) values; upper right shows associated p values.

Table 2. Sample size corrected diversity between *Trypanosoma cruzi* isolates derived from humans and the local environment during an outbreak of orally transmitted Chagas disease in 2 areas of Venezuela*

Isolate, location	No. isolates/no. genotypes	Sample size corrected allelic richness \pm SE	Mean no. private alleles/locus \pm SE
Human			
Antimano	30/26	2.735 \pm 0.291	0.32 \pm 0.113
Chichiriviche	12/9	3.459 \pm 0.412	0
Nonhuman			
Antimano	107/91	2.946 \pm 0.320	0.86 \pm 0.203
Chichiriviche	13/13	3.443 \pm 0.409	0

man transmission cycle in the slums of Caracas, maintained by *Rattus rattus* rodents and *Panstrongylus geniculatus* triatomines, is the likely source. The Chichiriviche outbreak, however, has potential sources both in and outside the immediate area. As found in Chagas disease outbreaks linked to açai palm fruit in Brazil (12), the *T. cruzi* parasite can survive for several days in some foodstuffs (13). Also, triatomines can survive for months in harvested crops; thus, multiple hygiene interventions are potentially necessary along the food production line (14). Nonetheless, if the foodstuff implicated was prepared locally, local contamination represents the most likely source of the outbreak. Study of additional nonhuman strains from Chichiriviche is necessary to support this assertion.

Crucial to understanding parasite transmission in general, we believe, are genetic differences between strains

from orally and non-orally transmitted human cases. All TcI strains appear to be infective to humans and adapted to long-term carriage (8). However, the presence of a common, reduced-diversity TcI genotype cluster (TcI_{DOM}) among a high proportion of human Chagas disease cases in South America is also well established (7,8). We originally hypothesized that TcI_{DOM} was maintained, despite the presence of sympatric and infective sylvatic strains, because of low parasite transmission efficiency by invasive sylvatic vectors (8). Oral transmission is likely to be much more efficient. Thus, unlike TcI_{DOM} strains, those from orally transmitted *T. cruzi* cases demonstrated high genetic diversity and clearly originated from local nonhuman *T. cruzi* populations. However, it is also true that all TcI_{DOM} strains we isolated originated from patients with chronic infection, and all orally transmitted cases were in the acute phase. We cannot, therefore, rule

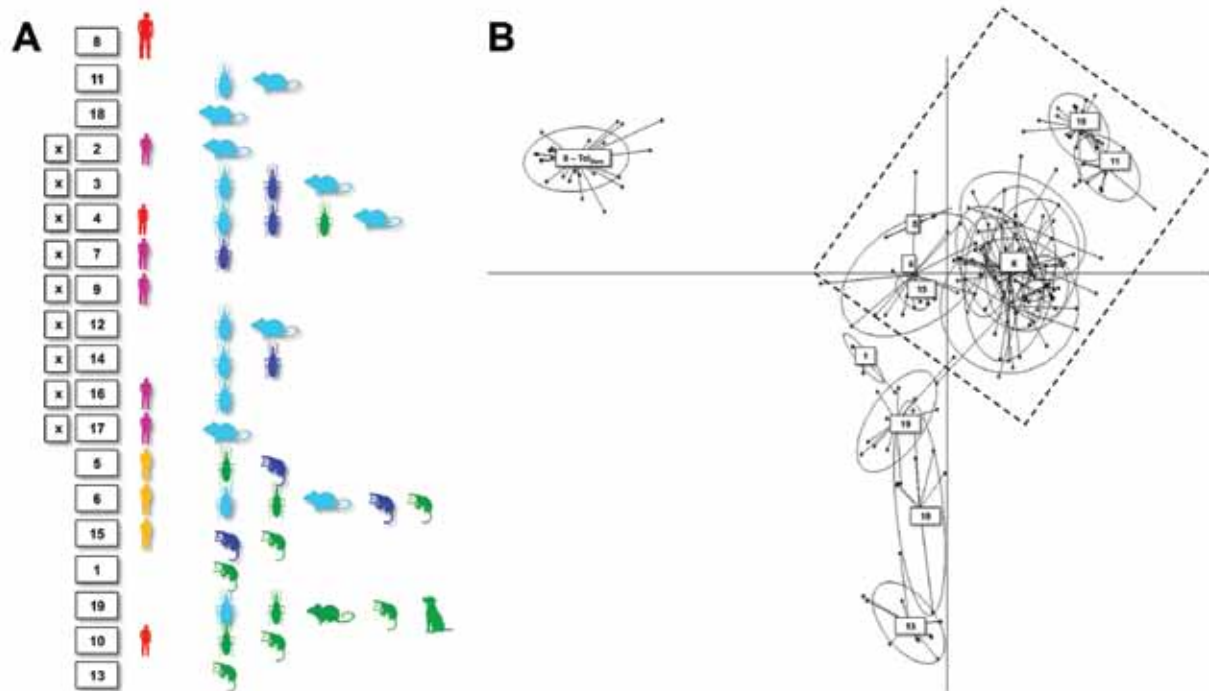


Figure 2. Discriminant analysis of principal components showing genetic clustering among *Trypanosoma cruzi* isolates from 2 outbreaks of oral disease in northern Venezuela. Six principal components were retained, explaining 80% of the diversity. Ellipses correspond to the optimal (as defined by the Bayesian information criterion minimum) number of population clusters among the genotypes analyzed. Images indicate sample host origin (human, rodent, marsupial, or triatomine), while colors correspond to the key in Figure 1. A full list of samples and population assignments (numbered boxes) is included in online Technical Appendix 2 (wwwnc.cdc.gov/EID/article/19/7/12-1576-Techapp1.xlsx). Dashed box indicates the isolates associated with the outbreaks.

out a role for immune selection in driving the frequency of TcI_{DOM} infections among humans; such selection represents an intriguing topic for future enquiry.

Molecular tools and reference datasets are now available to determine the source of acute Chagas disease outbreaks within days of their occurrence. The plummeting cost of such analyses means it is time to apply population genetic techniques and markers developed for trypanosomes as genuine epidemiologic tools.

Acknowledgments

Sincere thanks to Maria Dora Feliciangeli for her unconditional support. We also thank M. Rodriguez, L. Briceño, J. Ortegoza, M. Torres, F. Alfonso, H. Montañez, G. de Valenzuela, M. Sanchez, J. Lara, C. Viloria, J. Bracho, and L. Barrios for their support in the clinic, laboratory, and field.

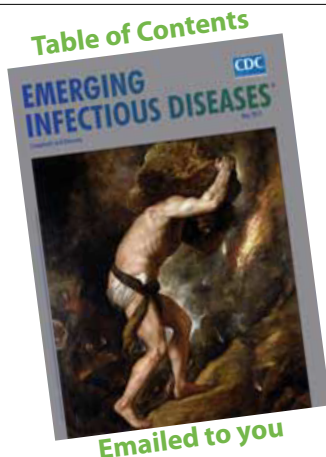
This work was supported by FONACIT (grant G-2005000827) and the European Union (Fp7 grant 223034).

Mr. Segovia is a researcher at the Laboratorio de Biología Molecular de Protozoarios, Universidad Central de Venezuela, in Caracas, and he works in several clinical laboratories in the area. He has a keen practical interest in disease epidemiology and pathogen population genetics.

References

1. Levy MZ, Bowman NM, Kawai V, Waller LA, Cornejo del Carpio JG, Cordova Benzaquen E, et al. Periurban *Trypanosoma cruzi*-infected *Triatoma infestans*, Arequipa, Peru. *Emerg Infect Dis.* 2006;12:1345–52. <http://dx.doi.org/10.3201/eid1209.051662>
2. Medrano-Mercado N, Ugarte-Fernandez R, Butron V, Uber-Busek S, Guerra HL, Araujo-Jorge TC, et al. Urban transmission of Chagas disease in Cochabamba, Bolivia. *Mem Inst Oswaldo Cruz.* 2008;103:423–30. <http://dx.doi.org/10.1590/S0074-02762008000500003>
3. Carrasco HJ, Segovia M, Llewellyn MS, Morocoima A, Urdaneta-Morales S, Martinez C, et al. Geographical distribution of *Trypanosoma cruzi* genotypes in Venezuela. *PLoS Negl Trop Dis.* 2012;6:e1707.
4. Rassi A Jr, Rassi A, Marin-Neto JA. Chagas disease. *Lancet.* 2010;375:1388–402. [http://dx.doi.org/10.1016/S0140-6736\(10\)60061-X](http://dx.doi.org/10.1016/S0140-6736(10)60061-X)
5. Shikanai-Yasuda MA, Carvalho NB. Oral transmission of Chagas disease. *Clin Infect Dis.* 2012;54:845–52. <http://dx.doi.org/10.1093/cid/cir956>
6. Alarcón de Noya B, Diaz-Bello Z, Colmenares C, Ruiz-Guevara R, Mauriello L, Zavala-Jaspe R, et al. Large urban outbreak of orally acquired acute Chagas disease at a school in Caracas, Venezuela. *J Infect Dis.* 2010;201:1308–15. <http://dx.doi.org/10.1086/651608>
7. Ramírez JD, Guhl F, Messenger LA, Lewis MD, Montilla M, Cucunuba Z, et al. Contemporary cryptic sexuality in *Trypanosoma cruzi*. *Mol Ecol.* 2012;21:4216–26. <http://dx.doi.org/10.1111/j.1365-294X.2012.05699.x>
8. Llewellyn MS, Miles MA, Carrasco HJ, Lewis MD, Yeo M, Vargas J, et al. Genome-scale multilocus microsatellite typing of *Trypanosoma cruzi* discrete typing unit I reveals phylogeographic structure and specific genotypes linked to human infection. *PLoS Pathog.* 2009;5:e1000410. <http://dx.doi.org/10.1371/journal.ppat.1000410>
9. Suárez J, de Suárez D, Alarcón de Noya B, Espinosa R, Chiurillo M, Villaroel PA, et al. Enfermedad de Chagas sistémico en fase aguda por transmisión oral: diagnóstico integral de un caso autopsiado. *Gac Med Caracas.* 2010;118:212–22.
10. Alarcón de Noya B, Martínez J. Transmisión oral de la enfermedad de Chagas en Venezuela: un segundo brote escolar. *Salus.* 2009; 13:9–10.
11. Jombart T, Devillard S, Balloux F. Discriminant analysis of principal components: a new method for the analysis of genetically structured populations. *BMC Genet.* 2010;11:94. <http://dx.doi.org/10.1186/1471-2156-11-94>
12. Nóbrega AA, Garcia MH, Tatto E, Obara MT, Costa E, Sobel J, et al. Oral transmission of Chagas disease by consumption of acai palm fruit, Brazil. *Emerg Infect Dis.* 2009;15:653–5. <http://dx.doi.org/10.3201/eid1504.081450>
13. Barbosa RL, Dias VL, Pereira KS, Schmidt FL, Franco RM, Guaraldo AM, et al. Survival in vitro and virulence of *Trypanosoma cruzi* in acai pulp in experimental acute Chagas disease. *J Food Prot.* 2012;75:601–6. <http://dx.doi.org/10.4315/0362-028X.JFP-11-233>
14. Miles MA. Orally acquired Chagas disease: lessons from an urban school outbreak. *J Infect Dis.* 2010;201:1282–4. <http://dx.doi.org/10.1086/651609>

Address for correspondence: Hernan J. Carrasco, Universidad Central de Venezuela, Caracas, Venezuela; email: hernan.carrasco@ucv.ve



GovDelivery

Manage your email alerts so you only receive content of interest to you.

Sign up for an Online Subscription:

www.cdc.gov/ncidod/eid/subscribe.htm

Molecular Epidemiologic Tracking of Source of Orally Transmitted Chagas Disease, Venezuela

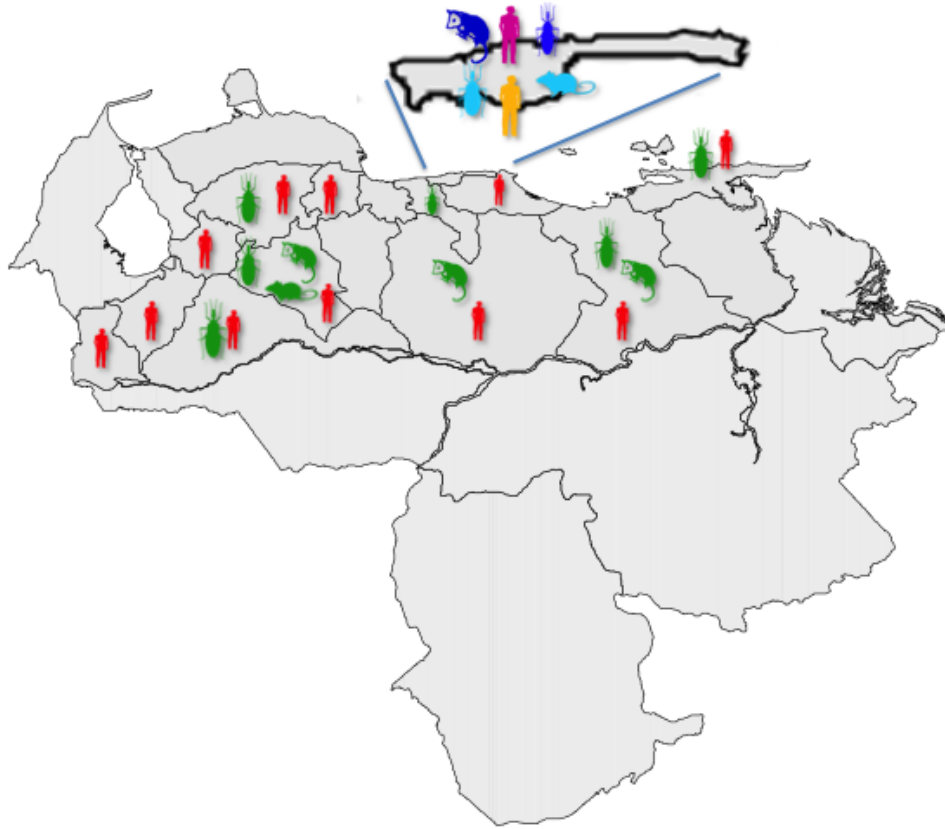
Technical Appendix 1

Technical Appendix Table. Primers and chromosomal positions for microsatellite loci used in a study of the molecular epidemiologic source tracking of 2 outbreaks of oral Chagas disease, Venezuela.

Chromosome	Primer code	Repeat type	Forward/Reverse Primer (5'-3')
6	6529(CA)a	(CA) _n	TGTGAAATGATTTGACCCGA AGAGTCACGCCGCAAAGTAT
6	6529(TA)b	(TA) _n	TGAAGGAGATTCTCTGCGGT CTCTCATCTTTTGTGTGTCGG
6	mclf10	(CA) _n A(CA) _n	GCGTAGCGATTTCATTTC ATCCGCTACCACTATCCAC
10	6855(TA)(GA)	(TA) _n (GA) _n	TGTGATCAACGCGCATAAAT TTCCATTGCCTCGTTTTAGA
19	TcUn3	Unknown	CTTAAAGAGATACAAGAGGGAAGG CTGTTATTTCAATAACACGGGG
19	10101(TA)	(TA) _n	AACCCGCGCAGATACATTAG TTCATTTGCAGCAACACACA
27	10101(TC)	(TC) _n	CGTACGACGTGGACACAAAC ACAAGTGGGTGAGCCAAAAG
27	10101(CA)a	(CA) _n	GTCGCCATCATGTACAAACG CTGTTGGCGAATGGTCATAA
34	6559(TC)	(TC) _n	CGCTCTCAAAGGCACCTTAC ATATGGACGCGTAGGAGTGC
37	10187(TTA)	(TTA) _n	GAGAGAGATTCGGAAACTAATAGC CATGTCCCTTCCCTCCGTA
37	10187(CA)(TA)	(CA) _n (TA) _n	CATGTCATTAAGTGCCACG GCACATGTTGGTTGTTGGAA
37	10187(TA)	(TA) _n	AGAAAAAGGTTTACAACGAGCG CGATGGAGAACGTGAAACAA
37	10187(GA)	(GA) _n	GTCACACCACTAGCGATGACA ACTGCACAATACCCCTTTG
37	TcUn2	Unknown	AACAAAATCTAGCGTCTACCATCC GGTGTGGCGTGTATGATTG
37	TcUn4	Unknown	ATGCTCCGCAACATATTACTCA GTTCGAGCTTCTGTTGTTCCC
39	6925(TG)b	(TG) _n	GAAACGCACTCACCCACAC GGTAGCAACGCCAACTTTC
39	7093(TC)	(TC) _n	CCAACATTCAACAAGGGAAA GCATGAATATTGCCGATCT
39	6925(CT)	(CT) _n	CATCAAGGAAAAACGGAGGA CGGTACCACCTCAAGGAAAG
39	7093(TA)c	(TA) _n	CGTGTGCACAGGAGAGAAAA CGTTTGGAGGAGGATTGAGA
39	7093(TCC)	(TCC) _n	AGACGTTCATATTTCGCAGCC AGCCACATCCACATTTCTC
40	11283(TCG)	(TCG) _n	ACCACCAGGAGGACATGAAG TGTACACGGAACAGCGAAG
40	11283(TA)b	(TA) _n	AACATCCTCCACCTCACAGG TTTGAATGCGAGGTGGTACA
41	10359(CA)(GA)	(CA) _n (GA) _n	AGTCTACTGCCTCCTTGCA CTGTTGGCGAATGGTCATAA



Technical Appendix Figure 1. Photo of Antimano, a suburban slum of Caracas, Venezuela.



Technical Appendix Figure 2. Geographic distribution of *Trypanosoma cruzi* isolates of the Tc1 genetic lineage included in a study of the molecular epidemiologic tracking of the source 2 Chagas disease outbreaks in Venezuela. Images indicate host origin (human, rodent, marsupial, or triatomine) of the samples; colors denote genetic population as explained in text Figure 2. Inset shows the capital city (Caracas) and surrounding Vargas State, where outbreaks of oral Chagas disease occurred in the cities of Antimano and Chichiriviche, respectively.