

---

# Domestic Animals and Epidemiology of Visceral Leishmaniasis, Nepal

Narayan Raj Bhattarai, Gert Van der Auwera, Suman Rijal, Albert Picado, Niko Speybroeck, Basudha Khanal, Simonne De Doncker, Murari Lal Das, Bart Ostyn, Clive Davies,<sup>1</sup> Marc Coosemans, Dirk Berkvens, Marleen Boelaert, and Jean-Claude Dujardin

On the Indian subcontinent, visceral leishmaniasis (VL) is considered an anthroponosis. To determine possible reasons for its persistence during interepidemic periods, we mapped *Leishmania* infections among healthy persons and animals in an area of active VL transmission in Nepal. During 4 months (September 2007–February 2008), blood was collected from persons, goats, cows, and buffaloes in 1 village. *Leishmania* infections were determined by using PCR. We found infections among persons (6.1%), cows (5%), buffaloes (4%), and goats (16%). Data were georeferenced and entered into a geographic information system. The bivariate K-function results indicated spatial clustering of *Leishmania* spp.–positive persons and domestic animals. Classification tree analysis determined that among several possible risk factors for *Leishmania* infection among persons, proximity of *Leishmania* spp.–positive goats ranked first. Although our data do not necessarily mean that goats constitute a reservoir host of *L. donovani*, these observations indicate the need for further investigation of goats' possible role in VL transmission.

**V**isceral leishmaniasis (VL), also known as kala-azar, is a fatal vector-borne parasitic disease. Worldwide in-

---

Author affiliations: B.P. Koirala Institute of Health Sciences, Dharan, Nepal (N.R. Bhattarai, S. Rijal, B. Khanal, M.L. Das); Institute of Tropical Medicine, Antwerp, Belgium (N.R. Bhattarai, G. Van der Auwera, N. Speybroeck, S. De Doncker, B. Ostyn, M. Coosemans, D. Berkvens, M. Boelaert, J.-C. Dujardin); London School of Hygiene and Tropical Medicine, London, UK (A. Picado, C. Davies); Université Catholique de Louvain, Brussels, Belgium (N.R. Bhattarai); University of Antwerp, Antwerp (M. Coosemans, J.-C. Dujardin); and Prins Leopold Institute, Antwerp (J.-C. Dujardin)

DOI: 10.3201/eid1602.090623

cidence is 500,000 cases per year; ≈90% of cases occur in India, Nepal, Bangladesh, Sudan, and Brazil (1). On the Indian subcontinent, the number of officially reported cases, although only a fraction of the true incidence (2), has increased during the past 5–6 years, and the disease is spreading to new areas (3). A kala-azar elimination program was recently launched by the governments of Bangladesh, India, and Nepal, with the support of the World Health Organization; the goal is to reduce the annual incidence in VL-endemic regions to <1 case per 10,000 persons by 2015 (4). The program essentially relies on early diagnosis and treatment of persons and on vector control (5). This strategy is based on the assumption that *Leishmania donovani*, the etiologic agent of VL, is transmitted from person to person (anthroponotic VL).

The possible role of domestic animals in anthroponotic VL has been studied in Bangladesh (6), but no clear conclusions have been drawn with regard to animals as risk factors or reservoir hosts. In contrast, the proximity to a VL-infected person is a major risk factor for VL (6). Thus, persons are still considered the only reservoir host for *L. donovani* on the Indian subcontinent. However, the reasons for persistence during interepidemic periods are debated, and dermal leishmaniasis after kala-azar has been incriminated (7). Correct identification of the *Leishmania* reservoir host is crucial for the design of control programs. Molecular tools offer new opportunities to better document and reassess transmission patterns. To explore the potential role of domestic animals in transmission, we performed an extensive study in an area of active VL transmission in Nepal, mapping *Leishmania* infections among healthy persons and domestic animals.

---

<sup>1</sup>Deceased. This article is dedicated to his memory.

## Materials and Methods

### Study Site

The study was conducted as part of the KALANET project, a community trial of insecticide-treated bed nets ([www.kalanetproject.org](http://www.kalanetproject.org)) in the Terai region of eastern Nepal. In Nepal, each village is divided into several wards. For the KALANET project, 10 wards with active VL transmission were selected. Dharan-17 was 1 such ward; it is a periurban ward in the Dharan municipality, located in the foothills of the Mahabharata hills and along the bank of Sarju River. Dharan-17 covers  $\approx 0.3$  km<sup>2</sup> (Figure 1) and has 515 inhabitants living in 105 households (Figure 2). A demographic survey conducted in July 2006 showed that 77% of households had at least 1 domestic animal (i.e., cow, goat, dog). Most cows, buffaloes, and goats were kept  $<10$  m from the households at night, although a few goats were kept inside the house. VL was only recently reported in this periurban area; Dharan-17 has an average VL incidence rate of 1.61% per year (for 2004–2006). Furthermore, during a previous study conducted in 2006, we documented a higher rate of VL positivity by PCR among the healthy persons in Dharan-17 compared with those in the 9 other wards in the KALANET trial, possibly suggesting a high transmission rate (8). For a control area, we selected Dhankura-3 in Patlekhola. This ward is  $\approx 60$  km from Dharan-17, in a hilly area where no VL cases have yet been reported.

### Ethical Aspects

Ethical clearance for the KALANET project was obtained from the Ethical Committee of the B.P. Koirala Institute of Health Sciences (BPKIHS), Dharan, Nepal, and the corresponding bodies at the Institute of Tropical Medicine, Antwerp, Belgium, and the London School of Hygiene and Tropical Medicine, London, UK. A community meeting informed local leaders and village residents about the study purpose; informed consent was obtained from all animal owners before their animals were included in the study. International animal experimentation guidelines were followed. Persons provided written consent before enrollment and providing blood samples, per the human experimentation guidelines approved by BPKIHS and the corresponding body at the Institute of Tropical Medicine, Antwerp. For religious reasons, 10.67% of persons did not provide written consent to donate their blood samples.

### Sample Collection

All animal surveys were conducted by experienced veterinarians. In Dharan-17, a house-to-house survey was first conducted in September 2007, among 105 households, to collect information on the number and types of

animals present in the ward; only information about bovines (cows and buffaloes) and goats was collected in this first survey. Later, 2 sampling surveys were conducted in this ward. In October 2007, survey I sampled 144 goats, 24 buffaloes, and 20 cows from the 37 households that had  $\geq 1$  bovine or goat. In February 2008, survey II focused on 6 households in which *Leishmania* spp.–positive

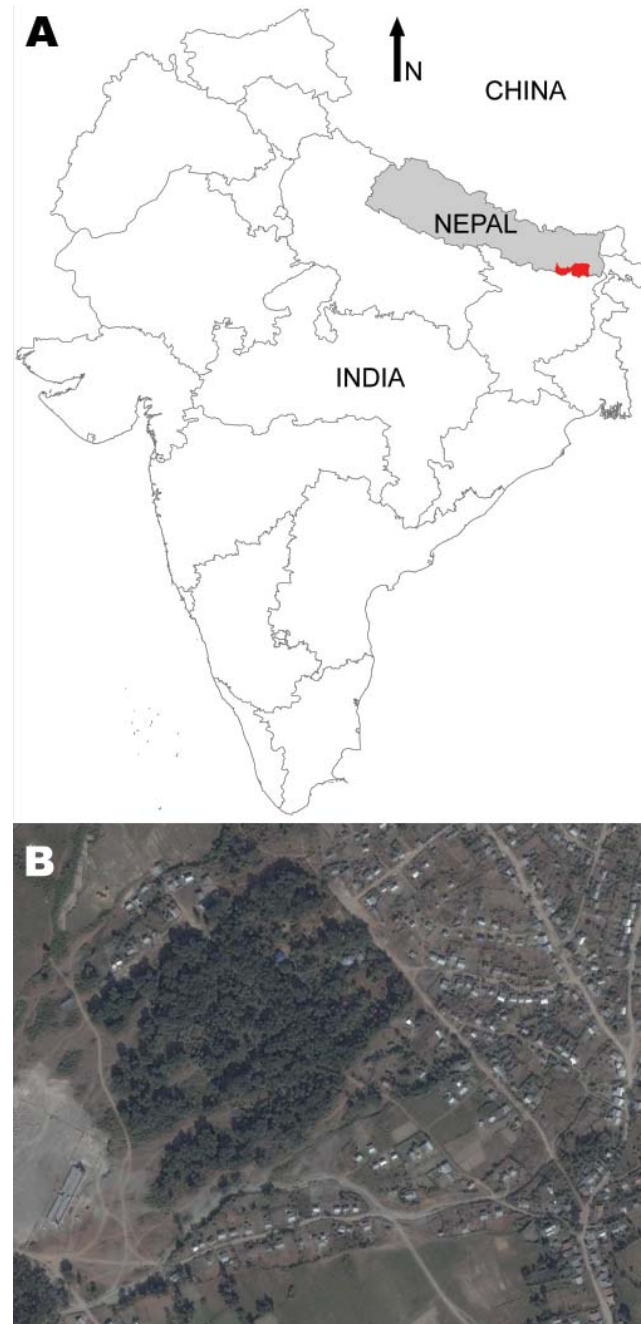


Figure 1. A) Visceral leishmaniasis–endemic area (red) of Nepal under study by KALANET project ([www.kalanetproject.org](http://www.kalanetproject.org)); B) satellite picture of Dharan-17, Nepal. Copyrights 2009 Google Image; 2009 DigitalGlobe; 2009 Europa Technologies; and 2009 Mapabc.com.

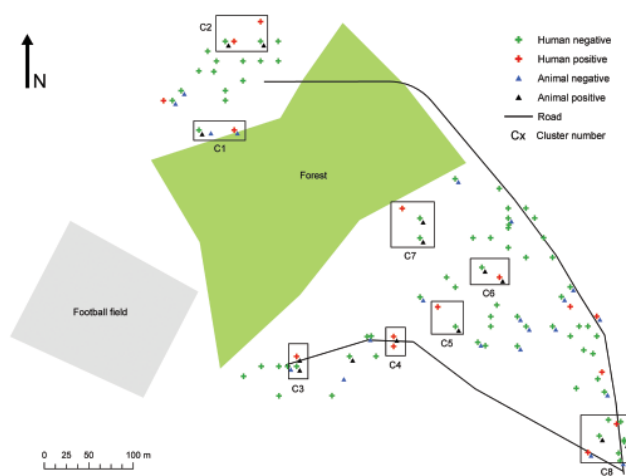


Figure 2. Distribution of sampled households and domestic animals, by visceral leishmaniasis status as determined by PCR, Dharan-17, Nepal, September 2007–February 2008.

animals had been identified during survey I. Although the owners claimed that the goats in surveys I and II were the same goats, we could not confirm this. In February 2008, samples were collected from 25 goats, 17 buffaloes, and 21 cows in the control area. In addition to animal samples, we also collected 278 blood samples from persons, all >5 years of age, who lived in Dharan-17 at the time of the survey and provided consent. The samples (1 mL) were collected by venipuncture from animals and persons into tubes containing molecular biology grade Na<sub>2</sub>EDTA (240 µg/mL of blood; Sigma-Aldrich, Bornem, Belgium). All tubes were immediately stored in a chilled ice box and transferred on the same day to the laboratory at BPKIHS, where 180 µL of each sample was transferred to a tube containing 180 µL of AS1 buffer (catalog no. 1006243; QIAGEN, Venlo, the Netherlands), mixed well, and stored at room temperature.

#### DNA Extraction and PCR Amplification

All blood samples stored in AS1 buffer were used to extract the DNA within 1 month. The QIAamp DNA Mini Kit (catalog no. 56301; QIAGEN) was used to extract DNA at BPKIHS, following manufacturer's instructions. All DNA samples were sent at ambient temperature to the Institute of Tropical Medicine, Antwerp, where they were analyzed by PCR specific for small ribosomal genes of *Leishmania* spp. as described elsewhere (9). To confirm that the amplified DNA corresponded to *Leishmania* spp., amplicons from a set of positive samples were sequenced. The sequences were compared with those of *Leishmania* spp. and other trypanosomatids from GenBank.

#### Spatial Clustering of *Leishmania* spp.–positive Households

We used the results from survey I to assess the clustering of the *Leishmania* spp.–positive samples in Dharan-17. Each household, previously georeferenced by a geographic positioning system and mapped by using ArcGIS 9.2 (ESRI, Redlands, CA, USA), was identified as *Leishmania* spp.–positive or –negative for animal and human samples. Analyses considered all animals (goats, cows, and buffaloes) together. The bivariate K-function was used to determine whether households with *Leishmania* spp.–positive persons were spatially clustered around households with *Leishmania* spp.–positive domestic animals in Dharan-17. The following equation was used (10):  $K(d) = \text{expected no. events B within distance } d \text{ of arbitrary event A} / \text{overall density of events B}$ . For easier interpretation of the results, the bivariate K-function was transformed in an L-function as follows (11):

$$L(d) = \sqrt{\frac{K(d)}{\pi}} - d$$

Positive  $L(d)$  results would suggest that human and animal *Leishmania* spp.–positive households are spatially associated. Further technical details on the bivariate K-function are available in the online Technical Appendix ([www.cdc.gov/EID/content/16/2/231-Techapp.pdf](http://www.cdc.gov/EID/content/16/2/231-Techapp.pdf)) (10–12).

#### Classification Trees

Classification trees (CTs) and regression trees (Salford Systems, San Diego, CA, USA) can be used in classification and regression problems (13). We used CTs to analyze risk factors and identify interactions for *Leishmania* spp.–positive households. This nonlinear, assumption-free, and algorithm-based method splits data variance across nested nodes (with increased importance toward the tree base). Its algorithm automatically eliminates variables without explanatory power. Sensitivity (% true positives) and specificity (% true negatives) were computed. A 10-fold cross-validation (leaving 10% of the data at a time for the whole dataset to compute percentage of misclassifications) was used. Node impurity was measured by using the Gini index, and the minimal size of the base and terminal nodes were set to 10 and 1 cases, respectively. The method is explained in more detail elsewhere (online Technical Appendix) (14–17). The factors included in the CT analysis were 1) household (i.e., type of house, head of household occupation/education) and biologic (i.e., density of domestic animals around households, collected in a house-to-house survey in July 2006 and estimated by using a kernel density function [ArcGIS, ESRI]) (6) and 2) results of PCR analyses (Table 1).

Table 1. Risk factors included in classification tree analysis of visceral leishmaniasis in Nepal\*

Biological factors (animals)	
No./household	Samples from buffalo, cow, or goat
	<i>Leishmania</i> spp.–positive samples from buffalo, cow, or goat
No. households with <i>Leishmania</i> spp.–positive animals	10, 25, 50, or 100 m from house
	Minimum, mean, and maximum distance to household with <i>Leishmania</i> spp.–positive animal
	Nos. poultry, birds, poultry and birds, pigs, dogs
	Density (no./km <sup>2</sup> ) of poultry, birds, poultry and birds, buffaloes, cows, goats, pigs
Biological factors (humans)	
No./household	Samples for PCR
	<i>Leishmania</i> spp.–positive samples
No. households with <i>Leishmania</i> spp.–positive persons	10, 25, 50, or 100 m from house
	Dichotomous variable for positive households for humans
	Minimum, mean, and maximum distance to household with <i>Leishmania</i> spp.–positive person
Household factors	
	No. houses, identity of household, latitude, longitude, education of head of household, occupation of head of household, category house type, socioeconomic index
	No. persons/ household, rooms, persons/room, bed nets, bed nets/person
*More details available upon request from J.-C.D.	

## Results

### Animal Sample PCR Results

Survey I found 188 domestic animals (goats, buffaloes, and cows) in only 37 of the 105 households of Dharan-17. The overall rate of *Leishmania* positivity was 13.3% (25/188); goats accounted for 16% (23/144), cows for 5% (1/20), and buffaloes for 4% (1/24).

The *Leishmania* spp.–positive animals were encountered in the 15 households shown in Figure 2. During survey II, only goats were sampled from 6 of these households; 2 goats (from different households) of 24 (8.34%) were *Leishmania* spp. positive. All sequenced amplicons confirmed the presence of a *Leishmania*-specific sequence. All 63 samples from animals in the control area were negative.

### Human Sample PCR Results and Spatial Clustering

In Dharan-17, of the 278 persons sampled, 17 (6.1%) were *Leishmania* spp. positive, 14 were healthy with no history of kala-azar, and none was a household contact of a VL case-patient. Of the 17 *Leishmania* spp.–positive persons, 2 had had VL and had been successfully treated. We could not determine the history for 1 person because he had moved out of the ward. The 17 *Leishmania* spp.–positive persons were from 16 households. The Kuldorff spatial

scan statistic (*I*<sub>8</sub>) was used to assess whether *Leishmania* spp.–positive persons were clustered in Dharan-17, but no significant clusters were detected. Analogous results were obtained for *Leishmania* spp.–positive animals (results not shown). However, when we superimposed households and *Leishmania* spp.–positive persons or animals (Figure 2), it visually appeared that 1) in 8 sites of the ward, *Leishmania* spp.–positive persons were localized in households near where *Leishmania* spp.–positive animals were kept (distance between the households <30 m; further called clusters), and that 2) in 1 site only *Leishmania* spp.–positive persons were found (Table 2). Some clusters constituted hot spots (had several cases of infection): clusters 2 (9 animals and 2 persons) and 8 (6 animals and 2 persons). The clusters represented in Figure 2 and detailed in Table 2 were determined visually; no statistical methods were applied. The bivariate K-function results show that households with *Leishmania* spp.–positive persons were clustered around households with *Leishmania* spp.–positive animals; *L*(*d*) is positive from 0 to 100 m. However, the spatial association between them is only significant from 0 to 5 m (online Technical Appendix).

### Classification Tree Analysis

The bivariate K-function analyzes only the relationship between *Leishmania* spp.–positive households for persons and domestic animals in Dharan. The results of this function have no meaning other than a spatial grouping of households with positive animals and persons. In a second stage, we used a CT model to analyze risk factors for *Leishmania* spp.–positive households. First we analyzed households in which *Leishmania* spp.–positive persons had been encountered. These results showed that the minimum distance to a household with a *Leishmania* spp.–positive animal (any species) was the variable with the highest discriminatory power. It appears first in the tree (Figure 3, panel A) and gets a relative importance score of 100% (data not shown). Discriminating distance was 22.8 m: households <22.8 m from a household with

Table 2. Distribution of *Leishmania* spp.–positive cases of visceral leishmaniasis among clusters, Nepal, September 2007–February 2008\*

Cluster	No. animals	No. humans
C1	1	1
C2	9	2
C3	2	1
C4	1	4
C5	1	1
C6	3	1
C7	3	1
C8	6	2
Out of cluster	1	4

\*Cluster group of households situated near (<30 m) each other and in which *Leishmania* spp.–positive animals or humans were encountered.

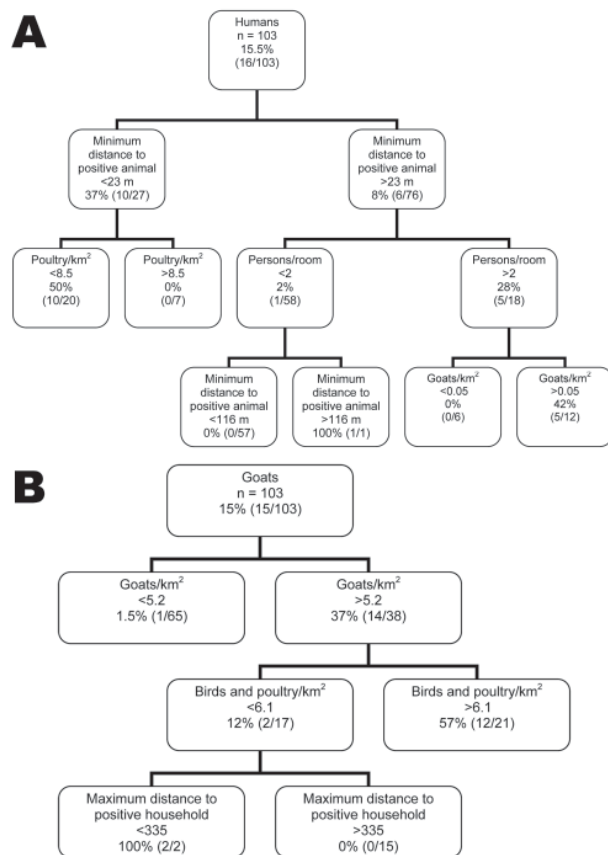


Figure 3. Classification tree results, showing interplay between risk factors of *Leishmania* positivity, determined by PCR, for A) humans and B) goats, in Dharan-17, Nepal, September 2007–February 2008.

*Leishmania* spp.–positive animals showed a 37% probability of hosting *Leishmania* spp.–positive persons versus 7.9% if they were  $>22.8$  m from a household with *Leishmania* spp.–positive animals. The next variables appearing on the tree were the density in poultry (higher risk for *Leishmania* spp.–positive persons if density  $\leq 8.55/\text{km}^2$ ), the number of persons per room (higher risk if  $>2.88$  persons/room), and density of goats (higher risk if  $>0.05$  goats/ $\text{km}^2$ ). A second CT analysis was conducted for households in which *Leishmania* spp.–positive animals had been encountered. The generated tree differed from the previous one in that the first discriminating variable was the density of goats per  $\text{km}^2$ ; risk for *Leishmania* spp. positivity associated with a density  $>5.2$  (36.8% vs. 1.5%; Figure 3, panel B) was higher, and a relative importance score was 100% (data not shown). The next variables appearing on the tree were the density of birds and poultry per  $\text{km}^2$  (higher risk for *Leishmania* spp.–positive goats if  $>6.14$ ) and the maximum distance to a household with a *Leishmania* spp.–positive person (higher risk if  $<334.6$  m).

All these variables also appeared with highest predictor ranking scores (data not shown).

For the tree in Figure 3, panel A, the sensitivity and specificity of the tree were 100% and 80.5%, respectively. For the tree in Figure 3, panel B, sensitivity and specificity were 93.3% and 89.8%, respectively.

The minimum distance to a positive animal split in Figure 3, panel A, is difficult to interpret. It involves 1 positive result and is under a branch that was determined to be predominantly negative as a result of the first split when using the same variable at  $>23$  m. This split should therefore be interpreted with caution. The same applies for the split of maximum distance to positive household  $\leq 335$  m (Figure 3, panel B), which is difficult to interpret if the study area is only  $300 \text{ m}^2$  and may be the result of the irregular shape of the study area.

## Discussion

We found *Leishmania* DNA in domestic animals (cows, buffaloes, and goats) from Dharan-17, mostly in goats (16%), although no goats or other animals in the control area were *Leishmania* spp. positive. As DNA persists in the body for only a short time (24 h) (19), PCR positivity is a good indicator of current (or recent) infection. Considering the time between the *Leishmania* spp. peak transmission season in Nepal (estimated in April–May) (20) and our first survey (October 2007), our results thus indicate that goats can be infected with *L. donovani* and that this infection persists for at least several months. Contact with *Leishmania* organisms, as shown by serologic findings, has already been reported for goats and other domestic animals in Sudan (21).

The decrease in *Leishmania* spp. positivity between the 2 surveys (from 16% in October 2007 to 8.34% in February 2008) could be explained by several reasons: 1) sampling bias, 2) effective decrease of parasitemia over a certain period because of immunologic control of infection, or 3) disappearance of positive animals from the ward. A follow-up study of *Leishmania* spp.–infected goats (up to at least 12 months) combined with an adequate tracking system are needed to determine whether parasites are still in the blood of the animals during the next transmission peak.

Comparison of the results from animals with those from healthy human volunteers from Dharan-17 provided additional interpretation of the animal results. *Leishmania* spp. positivity was found to be  $\approx 3\times$  lower among persons than among animals (6.1% vs. 16%, respectively). These data are consistent with data on the feeding behavior of *Phlebotomus argentipes* blood-sucking flies, reported previously (22). This species seems to breed essentially in cattle sheds (23) and are  $5\times$  more attracted to cattle than to persons (24,25) and feed more on animals (62.80%) than on persons (24.92%), according to a study in India (22).

Information about the association of PCR results for persons and domestic animals can be used to investigate the role of domestic animals in *L. donovani* transmission. Visual inspection of the data suggested that most of the *Leishmania* spp.–positive persons were living near *Leishmania* spp.–positive goats. This observation was confirmed by bivariate K-function results and CT analysis. Distance of clustering between *Leishmania* spp.–positive persons and *Leishmania* spp.–positive domestic animals varied slightly according to the method (K-function up to 5 m; CT analysis <22.8 m) and was less than the flight range of *P. argentipes* flies. Differences could be explained by the inclusion of *Leishmania* spp.–negative households in the CT analysis. The 2 types of CT analyses pointed more to the role of biologic factors than to household factors like education, bed-net use, or type of house. Additional studies should explore the presence of poultry as a risk factor, as has been reported for urban VL in Brazil (26).

Even if our results indicate that goats might be involved in the dynamics of VL, they do not necessarily mean that these animals constitute a reservoir host for *L. donovani*. Criteria for the definition of *Leishmania* reservoir hosts were recently reviewed (27) and include sandfly foraging behavior and feeding preferences and the dynamics of infections in assumed reservoir hosts; a key question is the clearance times (chronicity) of infections. Whether the phenomenon observed here can be extrapolated to other VL-endemic foci should also be explored. Dharan-17 is a new emerging focus, and in the absence of immunity, human and animal populations could be more sensitive to *Leishmania* infections. Our observations warrant further investigation and a close monitoring of goats and other peridomestic animals like rodents and birds. If the role of these animals in the transmission cycle is confirmed, the potential implications could affect VL control programs in the region.

### Acknowledgments

We thank Ganesh Prasad Regmi for invaluable help collecting blood samples from animals; the field workers Tikaram Khatri, Ram Bahadur Lama, and Thule for carefully handling all domestic animals during sampling; Tika-Ram Koirala for vehicle support; and Surendra Uranw for arranging a community meeting and supervising blood collection from human participants. Finally, the study would not be possible without the help of the Dharan-17 villagers, who showed a keen interest in including their animals and their own blood samples in our study.

This study was supported by the European Union–funded INCO-DEV KALANET project (EU contract no 015374).

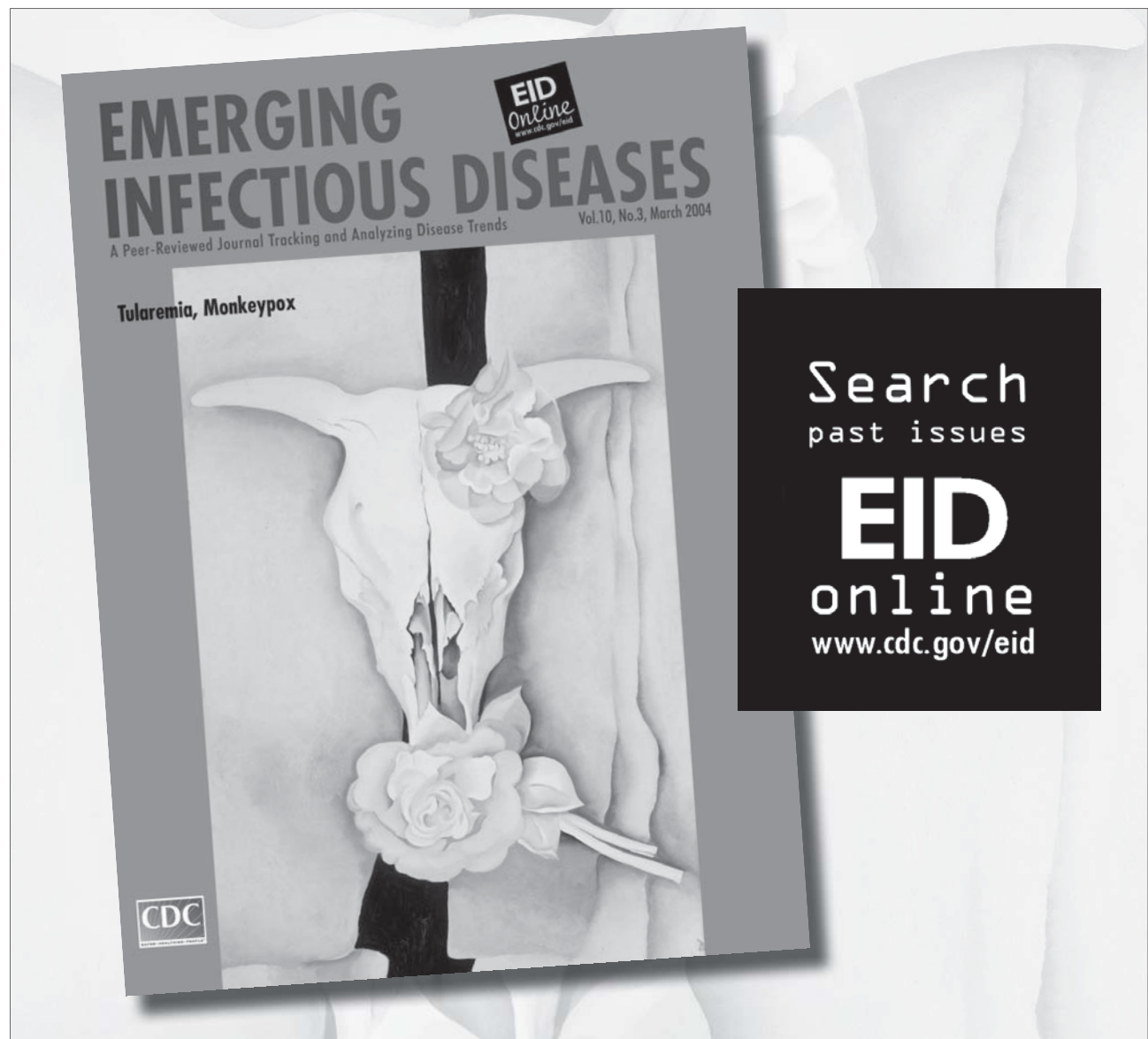
Mr Bhattarai is a PhD student in the laboratory of molecular parasitology of the Institute of Tropical Medicine, Antwerp, Belgium. His research interests are molecular diagnosis and epidemiology of leishmaniasis.

### References

- Desjeux P. Leishmaniasis. Public health aspects and control. *Clin Dermatol*. 1996;14:417–23. DOI: 10.1016/0738-081X(96)00057-0
- Singh SP, Reddy DC, Rai M, Sundar S. Serious underreporting of visceral leishmaniasis through passive case reporting in Bihar, India. *Trop Med Int Health*. 2006;11:899–905. DOI: 10.1111/j.1365-3156.2006.01647.x
- Joshi AB, Banjara MR, Pokhrel S, Jimba M, Singhasivanon P, Ashford RW. Elimination of visceral leishmaniasis in Nepal: pipe-dreams and possibilities. *Kathmandu Univ Med J (KUMJ)*. 2006;4:488–96.
- World Health Organization. Regional strategic framework for elimination of kala-azar from the South-East Asia region (2005–2015). New Delhi (India): The Organization; 2005 [cited 2009 Dec 11]. [http://www.searo.who.int/LinkFiles/Kala\\_azar\\_VBC-85\\_Rev\\_1.pdf](http://www.searo.who.int/LinkFiles/Kala_azar_VBC-85_Rev_1.pdf)
- Guerin PJ, Olliaro P, Sundar S, Boelaert M, Croft SL, Desjeux P, et al. Visceral leishmaniasis: current status of control, diagnosis, and treatment, and a proposed research and development agenda. *Lancet Infect Dis*. 2002;2:494–501. DOI: 10.1016/S1473-3099(02)00347-X
- Bern C, Hightower AW, Chowdhury R, Ali M, Amann J, Wagatsuma Y, et al. Risk factors for kala-azar in Bangladesh. *Emerg Infect Dis*. 2005;11:655–62.
- Addy M, Nandy A. Ten years of kala-azar in west Bengal, Part I. Did post-kala-azar dermal leishmaniasis initiate the outbreak in 24-Parganas? *Bull World Health Organ*. 1992;70:341–6.
- Bhattarai NR, Van der Auwera G, Khanal B, De Doncker S, Rijal S, Das ML, et al. PCR and direct agglutination as *Leishmania* infection markers among healthy Nepalese subjects living in areas endemic for kala-azar. *Trop Med Int Health*. 2009;14:404–11. DOI: 10.1111/j.1365-3156.2009.02242.x
- Deborggraeve S, Boelaert M, Rijal S, De Doncker S, Dujardin JC, Herdewijn P, et al. Diagnostic accuracy of new *Leishmania* PCR for clinical visceral leishmaniasis in Nepal and its role in diagnosis of disease. *Trop Med Int Health*. 2008;13:1378–83. DOI: 10.1111/j.1365-3156.2008.02154.x
- Lotwick HW, Silverman BW. Methods for analysing spatial processes of several types of points. *J R Stat Soc [Ser A]*. 1982;B44:406–13.
- Bailey TC, Gatrell AC. *Interactive spatial data analysis*. New York: John Wiley & Sons; 1995. p. 120–2.
- Ripley BD. The second-order analysis of stationary point processes. *Journal of Applied Probability*. 1976;13:255–66. DOI: 10.2307/3212829
- Olden JD, Lawler JJ, Poff NL. Machine learning methods without tears: a primer for ecologists. *Q Rev Biol*. 2008;83:171–93. DOI: 10.1086/587826
- Cook EF, Goldman L. Empiric comparison of multivariate analytic techniques: advantages and disadvantages of recursive partitioning analysis. *J Chronic Dis*. 1984;37:721–31. DOI: 10.1016/0021-9681-(84)90041-9
- Thang ND, Erhart A, Speybroeck N, Hung le X, Thuan le K, Hung TK. Malaria in central Vietnam: analysis of risk factors by multivariate analysis and classification tree models. *Malar J*. 2008;7:28. DOI: 10.1186/1475-2875-7-28
- Saegerman C, Speybroeck N, Roels S, Vanopdenbosch E, Thiry E, Berkvens D. Decision support tools in clinical diagnosis in cows with suspected bovine spongiform encephalopathy. *J Clin Microbiol*. 2004;42:172–8. DOI: 10.1128/JCM.42.1.172-178.2004
- Speybroeck N, Berkvens D, Mfoukou-Ntsakala A, Aerts M, Hens N, Van Huylenbroeck G, et al. Classification trees versus multinomial models in the analysis of urban farming systems in central Africa. *Agricultural Systems*. 2004;80:133–49. DOI: 10.1016/j.agsy.2003.06.006
- Kulldorff MA. Spatial scan statistic. *Communications in statistics—theory and methods*. 1997;26:1481–96. DOI: 10.1080/03610929708831995

19. Prina E, Roux E, Mattei D, Milon G. *Leishmania* DNA is rapidly degraded following parasite death: an analysis by microscopy and real-time PCR. *Microbes Infect.* 2007;9:1307–15. DOI: 10.1016/j.micinf.2007.06.005
20. Bhandari GP. Kala-azar control programme in Nepal: a programme review from 1994–2006 [dissertation: IMTA/MCM-MDC; 173]. Antwerp (Belgium): Prince Leopold Institute of Tropical Medicine; 2008.
21. Dereure J, El-Safi SH, Bucheton B, Boni M, Kheir MM, Davoust B, et al. Visceral leishmaniasis in eastern Sudan: parasite identification in humans and dogs; host–parasite relationships. *Microbes Infect.* 2003;5:1103–8. DOI: 10.1016/j.micinf.2003.07.003
22. Palit A, Bhattacharya SK, Kundu SN. Host preference of *Phlebotomus argentipes* and *Phlebotomus papatasi* in different biotopes of West Bengal, India. *Int J Environ Health Res.* 2005;15:449–54. DOI: 10.1080/09603120500392525
23. Singh R, Lal S, Saxena VK. Breeding ecology of visceral leishmaniasis vector sandfly in Bihar state of India. *Acta Trop.* 2008;107:117–20. DOI: 10.1016/j.actatropica.2008.04.025
24. Dinesh DS, Ranjan A, Palit A, Kishore K, Kar SK. Seasonal and nocturnal landing/biting behaviour of *Phlebotomus argentipes* (Diptera: Psychodidae). *Ann Trop Med Parasitol.* 2001;95:197–202. DOI: 10.1080/00034980120041071
25. Liloyd RB, Naiper LE. The blood meal of sand-flies investigated by means of precipitin antisera. *Indian J Med Res.* 1930;18:347–59.
26. Alexander B, de Carvalho RL, McCallum H, Pereira MH. Role of the domestic chicken (*Gallus gallus*) in the epidemiology of urban visceral leishmaniasis in Brazil. *Emerg Infect Dis.* 2002;8:1480–5.
27. Chaves LF, Hernandez MJ, Dobson AP, Pascual M. Sources and sinks: revisiting the criteria for identifying reservoirs for American cutaneous leishmaniasis. *Trends Parasitol.* 2007;23:311–6. DOI: 10.1016/j.pt.2007.05.003

Address for correspondence: Jean-Claude Dujardin, Prins Leopold Institute, Nationalestraat, 155 Antwerp 2000, Belgium; email: jcdujardin@itg.be



# Domestic Animals and Epidemiology of Visceral Leishmaniasis, Nepal

## K-function

### Materials and Methods

The bivariate (cross) K-function is an extension of the Ripley K-function, which is a method to test for global clustering in a point pattern in a planar space. The bivariate K-function estimates the spatial dependence between 2 events located in a defined area (i.e., village) by measuring the expected number of events B within a distance  $d$  of an arbitrary event A, divided by the overall density of the events B (equation 1) (1).

$$K(d) = \frac{\text{expected no. events B within a distance } d \text{ of an arbitrary event A}}{\text{Overall density of events B}} \quad (1)$$

To provide an easy linear interpretation of the interactions among human and animal *Leishmania*-positive households, we represented the bivariate K-function results as an L-function (equation 2) (2).

$$L(d) = \sqrt{\frac{K(d)}{\pi}} - d \quad (2)$$

If human and animal *Leishmania*-positive households are spatially independent, the expected value of  $L(d)$  is zero. In the present study  $L(d)$  was calculated at 5 m increment distance bands, the human *Leishmania*-positive households are the events A in equation 1 whereas the animal *Leishmania*-positive households are the events B. The statistical significance of the  $L(d)$  results was assessed by comparing them with the 95% confidence envelopes of the bivariate function estimated from 10,000 simulations assuming a random distribution of *Leishmania*-positive households. The random toroidal shifts method applied determined the confidence bands by randomly shifting the locations of animal *Leishmania*-positive households. The bivariate K-function applied did not include a formal edge correction, but the study area considered in the K-function calculations was enlarged to minimize the edge effect. The bivariate K-function was calculated by using the package Splan in R (3,4).



## Results

Bivariate k-function results presented in the Figure show that human *Leishmania*-positive households tend to be clustered around animal *Leishmania*-positive households in Dharan-17. However the spatial association is only statistically significant between 0 and 5 m.

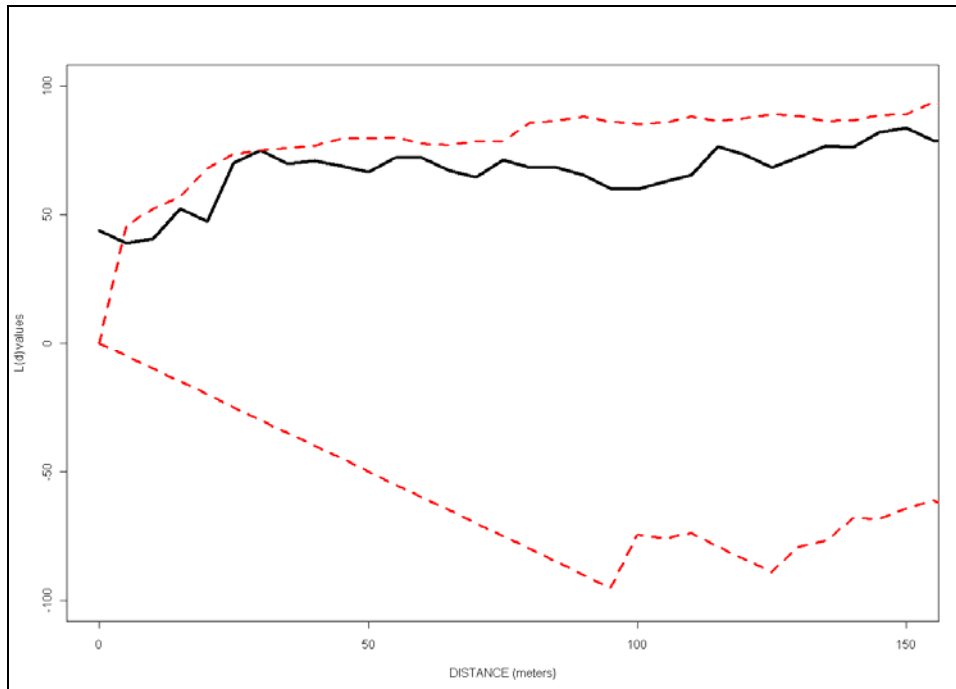


Figure. Bivariate L-function ( $L(d)$ ) plot to evaluate if human *Leishmania*-positive households are clustered around domestic animal *Leishmania*-positive households in Dharan-17. Solid line is the plot of  $L(d)$  for *Leishmania*-positive households. Red dotted lines are the 95% confidence envelopes of  $L(d)$  estimated from 10,000 simulations (random toroidal shifts).

## Classification trees

Classification trees provide a predictor ranking based on the contribution predictors make to the construction of the tree. This indicates how important the different independent variables are in determining the division of individuals into infected and noninfected nodes. It is possible that a variable never enters the tree as the splitter but would have been a second best at different points in the tree building. Such a “surrogate” splitter will turn out as very important in the variable importance ranking provided by CART because the system memorizes this into the global variable importance score. It can be noted that the more basal a node is, the more “variability” or “useful information” is present. The lack of assumptions regarding spatial

independence of variables in comparison to more traditional approaches like logistic regression is a further advantage of the method at hand.

Model specifications were as follows:

- a. Criteria used for predictive accuracy (% misclassified or variance): The sensitivity and specificity of the tree were computed. The sensitivity is defined as follows: Here, sensitivity means the probability that a positive case is correctly identified as a positive case and specificity means the probability that a negative case is correctly identified as a negative case (5).
- b. Impurity measures: As an impurity measure the Gini index was used. For classification problems, decision trees give the user the choice of several impurity measures: The Gini index, Chi-square, or G-square. The Gini index of node impurity is the measure most commonly chosen for classification-type problems.
- c. Stopping rules: The Terminal node and Parental node minimal cases were set to be 1 and 10, respectively.
- d. Estimation of accuracy (node impurity). The Gini index was used as a measure of impurity for the nodes.
- e. Cross validation measures used: A 10-fold cross validation was used.

## References

1. Lotwick HW, Silverman BW. Methods for analysing spatial processes of several types of points. *J R Stat Soc [Ser A]*. 1982;B44:406–13.
2. Bailey TC, Gatrell AC. *Interactive spatial data analysis*. John Wiley & Sons, New York, NY.1995.
3. Rowlingson BS, Diggle PJ. SLANCS: spatial point pattern analysis code in S-PLUS. *Comput Geosci*. 1993;19:627–55. [DOI: 10.1016/0098-3004\(93\)90099-Q](https://doi.org/10.1016/0098-3004(93)90099-Q)
4. Bivand R, Gebhardt A. Implementing functions for spatial statistical analysis using R language. *J Geogr Syst*. 2000;2:307–17. [DOI: 10.1007/PL00011460](https://doi.org/10.1007/PL00011460)
5. Cook EF, Goldman L. Empiric comparison of multivariate analytic techniques: advantages and disadvantages of recursive partitioning analysis. *J Chronic Dis*. 1984;37:721–31. [PubMed DOI: 10.1016/0021-9681\(84\)90041-9](https://pubmed.ncbi.nlm.nih.gov/10.1016/0021-9681(84)90041-9/)