

---

# *Echinococcus vogeli* Infection in a Hunter, French Guiana

Jenny Knapp,<sup>1</sup> Mircea Chirica,  
Christine Simonnet, Frederic Grenouillet,  
Jean-Mathieu Bart, Yasuhito Sako, Sonoyo Itoh,  
Minoru Nakao, Akira Ito,<sup>1</sup> and Laurence Millon<sup>1</sup>

*Echinococcus vogeli* infection in a hunter from the rain forest of French Guiana was confirmed by imaging and mitochondrial DNA sequence analysis. Serologic examination showed typical patterns for both alveolar and cystic echinococcosis. Polycystic echinococcosis caused by *E. vogeli* may be an emerging parasitic disease in Central and South America.

Echinococcosis is one of the most lethal helminthic zoonoses worldwide. The 4 species of the genus *Echinococcus* are *E. granulosus* sensu lato, now including 5 independent species (1,2), which causes cystic echinococcosis (CE); *E. multilocularis*, which causes alveolar echinococcosis; *E. vogeli*, which causes polycystic echinococcosis (PE); and *E. oligarthrus*, which causes the recently described unicystic echinococcosis (3–6). Among these species, *E. oligarthrus* and *E. vogeli* are neotropical species localized exclusively in Central and South America (5,6). Only 3 cases of *E. oligarthrus* infection have been reported in the literature (1 from Brazil, 1 from Venezuela, and 1 from Surinam); 168 *E. vogeli* cases have been reported in 12 countries in Central and South America. To date, there have been no reports of neotropical echinococcosis in Bolivia, Paraguay, Guyana, or French Guiana (5,6). *E. granulosus* occurs sympatrically in South America, whereas *E. multilocularis* does not occur there at all (3,5). As both *E. vogeli* and *E. oligarthrus* have primarily sylvatic life cycles and the diagnosis is usually based on histopathologic examination of resected lesions, the number of human cases might be underestimated because of the small number of

patients who receive surgical treatment (5,6). We report a case of human infection from French Guiana caused by *E. vogeli*.

## The Study

In April 2006, a 72-year-old man was admitted to a local hospital in Cayenne, French Guiana, for abdominal pain and a palpable epigastric mass. The patient hunted jaguars in the rain forest of French Guiana and owned dogs. He had no history of travel outside French Guiana. An exploratory laparotomy performed in June 2006 showed a hard, whitish liver tumor, deemed unresectable. Histopathologic examination of a biopsied sample of the tumor showed multilocular cysts. Albendazole treatment was started immediately after surgery. In January 2007, the patient was referred to the Department of General, Endocrine, and Digestive Surgery at the Saint-Louis Hospital, Paris, France. Computed tomography showed a multilocular hypoattenuating cystic mass in the left side of the liver, infiltrating the left glissonian pedicle up to the hepatic hilum (Figure 1, Panel A). Magnetic resonance imaging showed a well-defined, thin-walled, multilocular cystic mass (11 × 10 × 12 cm) involving segments II, III, and IV of the liver (Figure 1, Panel B) and multiple intraperitoneal cysts. The cysts appeared markedly hyperintense on T2-weighted images, hypo-intense on T1-weighted images, and showed slight enhancement of the septa after gadolinium injection. The patient underwent a left hepatectomy and resection of intraperitoneal cysts. Analysis of the operative specimen showed multiple large and small parasite hooks, with mean lengths of 32.7 μm ± 1.6 μm and 42.7 μm ± 0.7 μm, respectively (Figure 2).

Two serum samples from the patient (one obtained in May 2006, the other in December 2006) were analyzed by several immunologic techniques; all indicated infection with *Echinococcus* spp. Commercial ELISAs using *E. granulosus* antigens (Bordier Affinity Products, Lausanne, Switzerland, and Biotrin International, Antony, France) and the *E. multilocularis*-specific Em2<sup>plus</sup>-ELISA (Bordier Affinity Products, Switzerland) were both strongly positive. Confirmative Western blots (LD Bio Products, Lyon, France) showed a shadow at 16–18 kDa, which is characteristic for *E. granulosus* infection, on both samples. Additional Western blots carried out at Asahikawa Medical College (Asahikawa, Japan) using recombinant antigens (RecAgB8/1, more specific for *E. granulosus*, and RecEm18, more specific for *E. multilocularis*; 7,8) also showed strong responses. On the basis of serologic patterns obtained with recombinant antigens, with no knowledge of the patient's clinical background, travel history, or images of the lesion, *E. granulosus* infection with many multiple cysts, advanced *E. multilocularis*, or advanced *E. vogeli* infection was suspected (7,9).

<sup>1</sup>These authors contributed equally to this article.

---

Author affiliations: Université de Franche-Comté, Besançon, France (J. Knapp, F. Grenouillet, J.-M. Bart, L. Millon); Asahikawa Medical College, Asahikawa, Hokkaido, Japan (J. Knapp, Y. Sako, S. Itoh, M. Nakao, A. Ito); Saint-Louis Hospital, Paris, France (M. Chirica); Pasteur Institute of French Guiana, Cayenne, French Guiana (C. Simonnet); and World Health Organization Collaborating Center for Prevention and Treatment of Human Echinococcosis, Besançon (J. Knapp, F. Grenouillet, L. Millon)

DOI: 10.3201/eid1512.090940

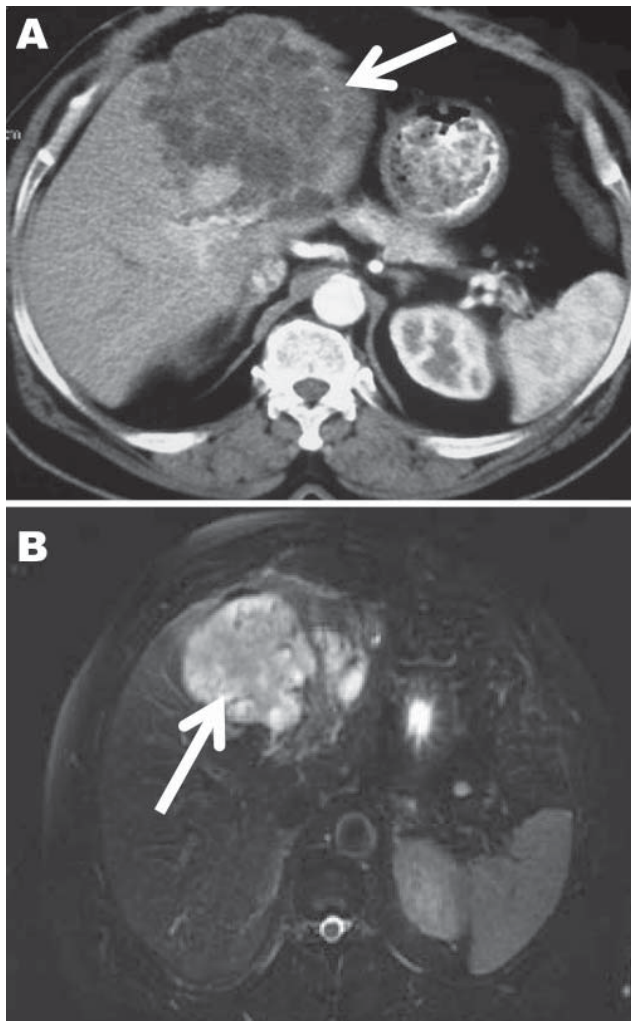


Figure 1. Computed tomography (A) and magnetic resonance (B) images of the liver of a 72-year-old man from French Guiana with polycystic echinococcosis affecting the left side of the liver. White arrows indicate the multicystic liver lesion.

Molecular identification was carried out with reference to the GenBank database by using a highly polymorphic DNA target (10). DNA from the liver lesion was extracted by using the High Pure PCR Preparation Kit (Roche, Mannheim, Germany). A part of the *cox1* mitochondrial gene was sequenced by using the *E. vogeli*-specific primer set (*cox1*\_F: 5'-TTAATTTTGCCTGGGTTTGG-3' and *cox1*\_R: 5'-ACGACCCATATGATCCCAA-3'). A sequence of 492 bp was obtained with the ABI 310 sequencer (Applied Biosystems, Foster City, CA, USA) and was compared with *Echinococcus* spp. sequences published in the GenBank database (online Appendix Table, available from [www.cdc.gov/EID/content/15/12/2029-appT.htm](http://www.cdc.gov/EID/content/15/12/2029-appT.htm)). The sequences were aligned by using BioEdit 7.0.9.0 (11), and sequence identity matrix was generated based on the

percentage of base pairs in common between species. The *cox1* sequence was found to be 100% identical to *E. vogeli* species originating from Colombia (GenBank accession no. AB208546; 2) and was clearly distinguishable from all other *Echinococcus* species (online Appendix Table).

On the basis of imaging showing numerous multiple cysts, serologic examination showing typical patterns for both alveolar and cystic echinococcosis, and the life history of the patient, the diagnosis of polycystic echinococcosis caused by *E. vogeli* could have been made before surgical intervention (5,7,9). The immunoblot showing a strong antibody response to recombinant AgB suggested a large volume of cyst fluid. Therefore, the immunoblot showing strong responses to both recombinant Em18 and AgB may be a typical pattern for advanced *E. vogeli* infection (data not shown). Because few studies using serologic analysis on human *E. vogeli* cases have been published, it would be useful to study antibody responses using recombinant antigens with large numbers of such patients and to compare the results with patterns observed with alveolar and cystic echinococcosis (7,9).

After surgery, identification of parasite hooks was carried out. The hooks showed the characteristic shape of *E.*

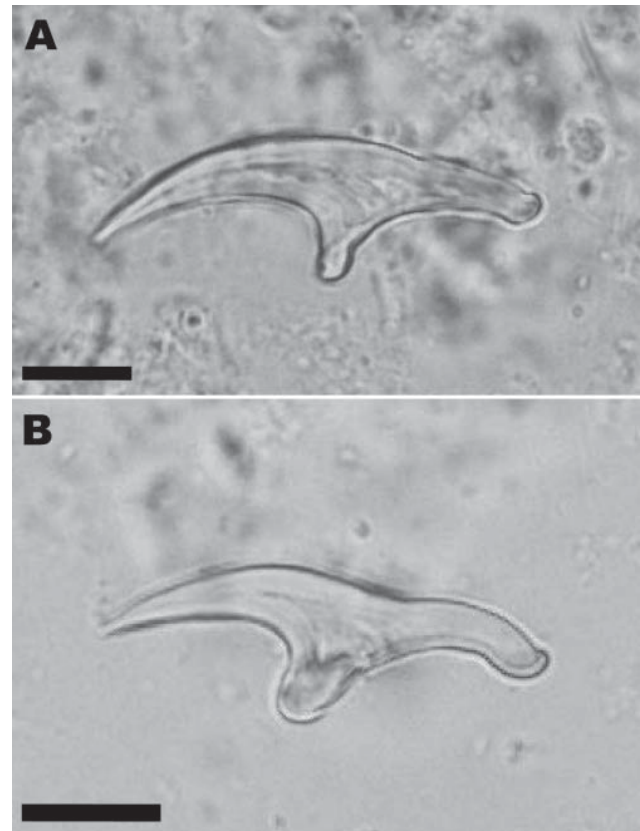


Figure 2. Large (A) and small (B) hooks from *Echinococcus vogeli* protoscoleces in the liver lesion of a 72-year-old man from French Guiana. Scale bars = 10 $\mu$ m.

*vogeli* and thus differed from *E. granulosus* (mean lengths of large hooks 25.9–35 µm, and small hooks 22.6–27.8 µm) and *E. oligarthrus* (30.5–33.4 µm and 25.4–27.3 µm, respectively) (12,13). *E. granulosus* and *E. oligarthrus* also occur in South America. The presence of hooks indicated that the parasite lesion was fertile in our patient, as shown in ≈50% of cases (5). Based on mitochondrial DNA analysis, the parasite identification was confirmed as *E. vogeli*. Further molecular studies on the haplotypes of this species may give information concerning the genetic diversity and circulation of the parasite in South America (14).

Albendazole has been used for medical management of alveolar and advanced cystic echinococcosis (3). Several instances of its efficacy on polycystic echinococcosis have been reported, but given the primacy of surgical management of these infections, albendazole will probably remain an additional treatment (5).

Neotropical echinococcosis cases are rare compared with alveolar and cystic echinococcosis (5). This rarity is probably because of the sylvatic life cycle of these species. However, because domestic dogs have been introduced to areas where *E. vogeli* is present in its natural cycle, the potential for transmission of the parasites from dogs to humans by close contact exists. The at-risk population mainly lives in rural areas and has limited access to medical services, which strongly suggests that many infected persons cannot receive adequate treatment for this underestimated disease.

## Conclusions

We report an autochthonous case of *E. vogeli* infection documented in French Guiana. Further investigations are needed to improve the serologic diagnosis of this infection and to define its typical serologic pattern compared with echinococcosis. Healthcare providers need to be alert to the existence of neotropical echinococcosis and should consider the possibility of its emergence in Central and South America. Although rare, this disease is still lethal in untreated cases.

## Acknowledgments

We thank Christine Budke and Lois Rose for critical amendments to this paper and Antonio D'Alessandro for providing epidemiologic information.

This study was supported in part by an international research fund to A.I. from the Japan Society for the Promotion of Science (JSPS) (17256002, 21256003). J.K. was a JSPS postdoctoral fellow (2008 Sep 1–2009 Jul 31).

Dr Knapp completed her PhD at the University of Franche-Comté and is a postdoctoral fellow working at Asahikawa Medical College, Japan. Her major research focus is the molecular epidemiology of echinococcosis.

## References

- Hüttner M, Nakao M, Wassermann T, Siefert L, Boomker JD, Dinkel A, et al. Genetic characterization and phylogenetic position of *Echinococcus felidis* (Cestoda: Taeniidae) from the African lion. *Int J Parasitol.* 2008;38:861–8. DOI: 10.1016/j.ijpara.2007.10.013
- Nakao M, McManus DP, Schantz PM, Craig PS, Ito A. A molecular phylogeny of the genus *Echinococcus* inferred from complete mitochondrial genomes. *Parasitology.* 2007;134:713–22. DOI: 10.1017/S0031182006001934
- Pawloski ZS, Eckert J, Vuitton DA, Ammann RW, Kern P, Craig PS, et al. Echinococcosis in humans: clinical aspects, diagnosis and treatment. In: Eckert J, Gemmell MA, Meslin FX, Pawlowski J, eds. WHO/OIE Manual on echinococcosis in humans and animals: a public health problem of global concern. Paris: World Organisation for Animal Health, 2001:20–72.
- McManus DP, Zhang W, Li J, Bartley PB. Echinococcosis. *Lancet.* 2003;362:1295–304. DOI: 10.1016/S0140-6736(03)14573-4
- D'Alessandro A, Rausch RL. New aspects of neotropical polycystic (*Echinococcus vogeli*) and unicystic (*Echinococcus oligarthrus*) echinococcosis. *Clin Microbiol Rev.* 2008;21:380–401. DOI: 10.1128/CMR.00050-07
- Tappe D, Stich A, Frosch M. Emergence of polycystic neotropical echinococcosis. *Emerg Infect Dis.* 2008;14:292–7. DOI: 10.3201/eid1402.070742
- Ito A, Nakao M, Sako Y. Echinococcosis: serological detection of patients and molecular identification of parasites. *Future Microbiol.* 2007;2:439–49. DOI: 10.2217/17460913.2.4.439
- Sako Y, Nakao M, Nakaya K, Yamasaki H, Gottstein B, Lightowers MW, et al. Alveolar echinococcosis: characterization of diagnostic antigen Em18 and serological evaluation of recombinant Em18. *J Clin Microbiol.* 2002;40:2760–5. DOI: 10.1128/JCM.40.8.2760-2765.2002
- Ito A, Xiao N, Liance M, Sato MO, Sako Y, Mamuti W, et al. Evaluation of an enzyme-linked immunosorbent assay (ELISA) with affinity-purified Em18 and an ELISA with recombinant Em18 for differential diagnosis of alveolar echinococcosis: results of a blind test. *J Clin Microbiol.* 2002;40:4161–5. DOI: 10.1128/JCM.40.11.4161-4165.2002
- Nakao M, Yokoyama N, Sako Y, Fukunaga M, Ito A. The complete mitochondrial DNA sequence of the cestode *Echinococcus multilocularis* (Cyclophyllidae: Taeniidae). *Mitochondrion.* 2002;1:497–509. DOI: 10.1016/S1567-7249(02)00040-5
- Hall TA. BioEdit: a user-friendly biological sequence alignment editor and analysis program for Windows 95/98/NT. *Nucleic Acids Symp Ser.* 1999;41:95–8.
- Rausch RL, Rausch VR, D'Alessandro A. Discrimination of the larval stages of *Echinococcus oligarthrus* (Diesing, 1863) and *E. vogeli* Rausch and Bernstein, 1972 (Cestoda: Taeniidae). *Am J Trop Med Hyg.* 1978;27:1195–202.
- Thompson RC, McManus DP. Aetiology: parasites and life-cycles. In: Eckert J, Gemmell MA, Meslin FX, Pawlowski ZS, eds. WHO/OIE manual on echinococcosis in humans and animals: a public health problem of global concern. Paris: World Organisation for Animal Health; 2001. p. 1–9.
- Yamasaki H, Nakao M, Nakaya K, Schantz PM, Ito A. Genetic analysis of *Echinococcus multilocularis* originating from a patient with alveolar echinococcosis occurring in Minnesota in 1977. *Am J Trop Med Hyg.* 2008;79:245–7.

Address for correspondence: Laurence Millon, Department of Parasitology, UMR 6249 CNRS/UFC Chrono-Environnement, Jean Minjot University Hospital, 25030 Besançon, France; email: laurence.millon@univ-fcomte.fr

Appendix Table. Sequence identity matrix among *Echinococcus* spp. Cox1 referenced sequences (a 492-bp part of the *cox1* gene)\*

Cox1 referenced sequences	GenBank accession no.	<i>E. multilocularis</i>	<i>E. shiquicus</i>	<i>E. granulosus</i>	<i>E. equinus</i>	<i>E. ortleppi</i>	<i>E. canadensis</i> G6	<i>E. canadensis</i> G7	<i>E. canadensis</i> G8	<i>E. oligarthrus</i>	<i>E. vogeli</i>
<i>E. multilocularis</i>	AB018440										
<i>E. shiquicus</i>	AB208064	92.4									
<i>E. granulosus</i>	AF297617	91.4	91.6								
<i>E. equinus</i>	AF346403	92.4	93.2	92.8							
<i>E. ortleppi</i>	AB235846	92.4	91.2	92.0	92.6						
<i>E. canadensis</i> G6	AB208063	91.0	90.0	91.8	91.0	94.9					
<i>E. canadensis</i> G7	AB235847	91.0	90.0	91.8	91.0	94.9	100				
<i>E. canadensis</i> G8	AB235848	92.0	89.6	90.6	91.8	94.7	95.5	95.5			
<i>E. oligarthrus</i>	AB208545	91.8	91.6	90.0	91.4	91.4	89.8	89.8	90.0		
<i>E. vogeli</i>	AB208546	91.8	91.6	91.4	93.6	91.4	90.0	90.0	90.4	91.4	
DNA of samples of parasite from patient		91.8	91.6	91.4	93.6	91.4	90.0	90.0	90.4	91.4	100

\*Identity is provided as the percentage of nucleotide base differences.