



Response of RJ Lee Group

to the

**United States Environmental Protection Agency Region IX
Response (dated April 20, 2006) to the November 2005**

National Stone, Sand & Gravel Association Report

Prepared by the R.J. Lee Group, Inc [sic]

**"Evaluation of EPA's Analytical Data from the
El Dorado Hills Asbestos Evaluation Project"**

Regarding

**Evaluation of EPA's Analytical Data
from the El Dorado Hills
Asbestos Evaluation Project**

Exhibit A

Attachment A-3a

Lab/Cor Photographs of Particles

Date: July 2006

Prepared by:

RJ LeeGroup, Inc.

350 Hochberg Rd.

Monroeville, PA 15146

www.rjlg.com

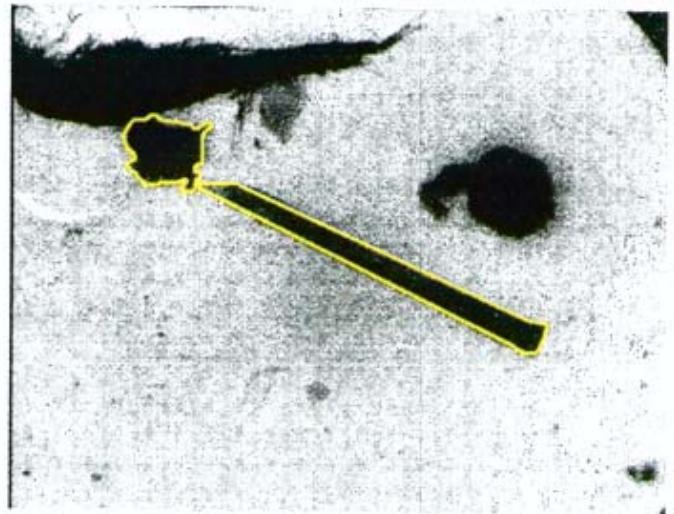
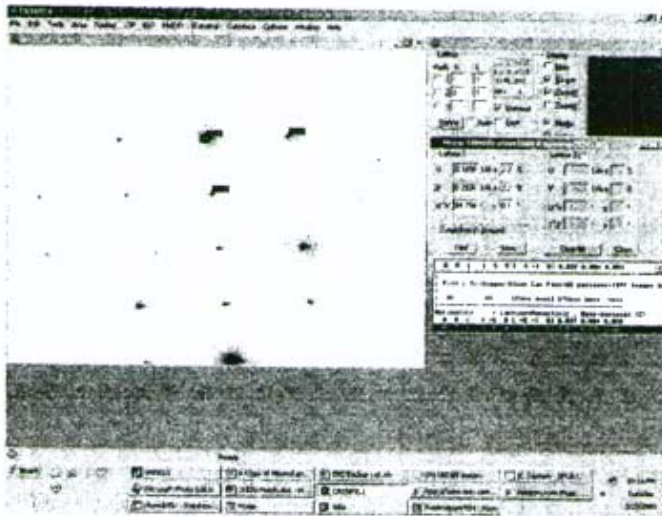
Lab/Cor, Inc.

A Professional Service Corporation in the Northwest

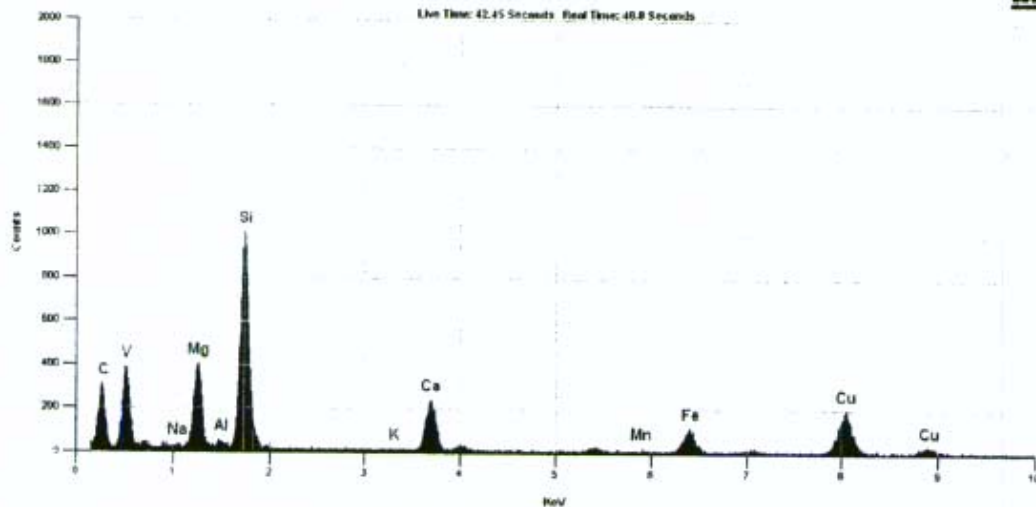
ACTINOLITE - Zone Axis [5 -1 0]

Neg# J1572 Job# 041210-46

JEOL 1200EX - Gatan Image



WNEEDS



File: 041210-46 SP 1206 Time: 05:50 PM Date: Tue, Mar 29 2005 Accelerating Voltage: 100 kV Take Off Angle: 15 Degrees

Quantitative Analysis Results - Standardless Analysis :

041210-46 SP 1206 Tue, Mar 29 2005

EDS Parameters - 100KV, Takeoff Angle: 35.0°, Fit Index: 206.00

Correction: CLIFF LORIMER, Cycles: 1

Element	Atoms%	Compound	Weight%	Error(±)	Norm%
Na	0.42	Na2O	0.61	0.30	0.61
Mg	9.65	MgO	18.12	0.63	18.12
Al	0.19	Al2O3	0.44	0.20	0.44
Si	21.63	SiO2	60.58	1.45	60.58
Ca	4.66	CaO	12.19	0.72	12.19
Fe	2.17	Fe2O3	8.06	0.87	8.06
<Total>	100.00		100.00		100.00

Lab/Cor, Inc.

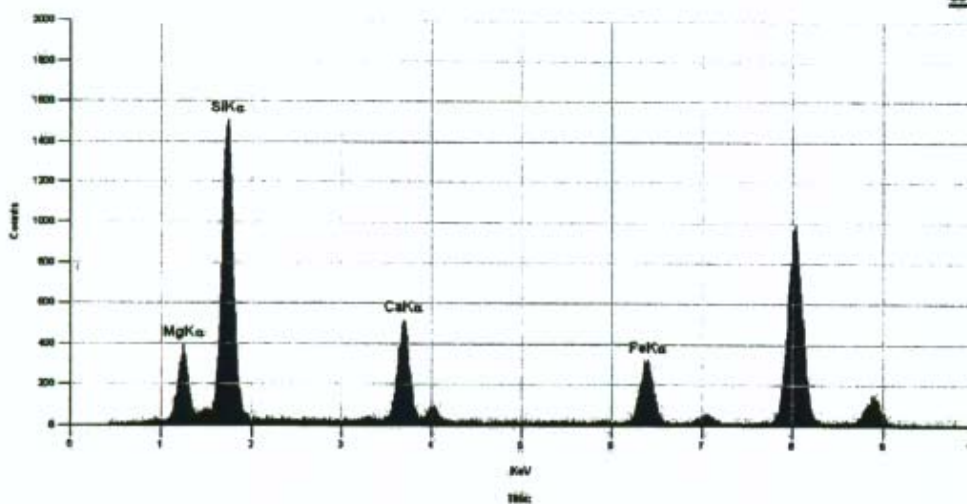
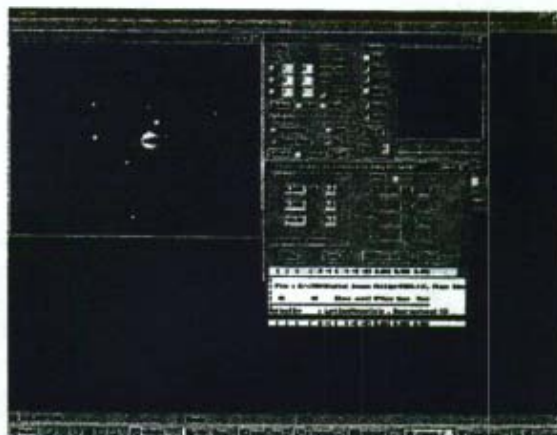
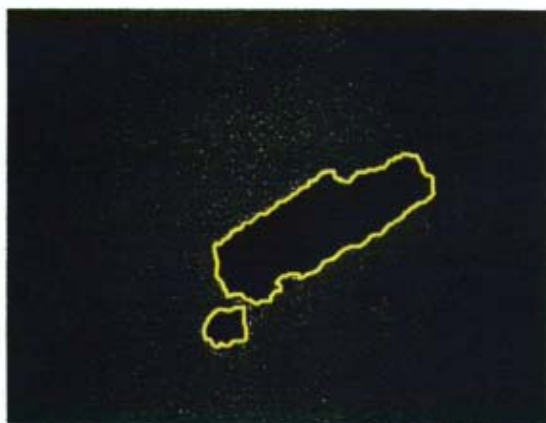
A Professional Service Corporation in the Northwest

Actinolite

Neg#[254]; [Job# 041210-47]

[3-31-05] iTEM Image

Zone Axis [-2 -1 1]



Quantitative Analysis Results - Standardless Analysis :
041210-47 EDS# 15957 Thu, Mar 31 2005
EDS Parameters - 100KV, Takeoff Angle: 38.0°, Fit Index: 11.14

Element	Atoms%	Compound	Weight%	Error(±)	Norm%
Mg	8.44	MgO	15.53	0.95	15.53
Si	21.43	SiO ₂	58.76	1.64	58.76
Ca	4.91	CaO	12.57	0.64	12.57
Fe	3.60	Fe ₂ O ₃	13.13	0.96	13.13
<Total>	100.00		100.00		100.00

7619 6th Avenue NW, Seattle, WA 98117

www.labcor.net Phone: (206) 781-0155 (Office) Fax: (206) 789-8424 E-mail: mail@labcor.net

Lab/Cor, Inc.

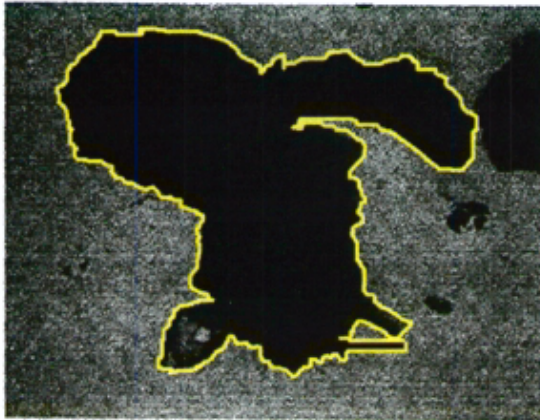
A Professional Service Corporation in the Northwest

ACTINOLITE

Neg#[256]; [Job# 041210-47]

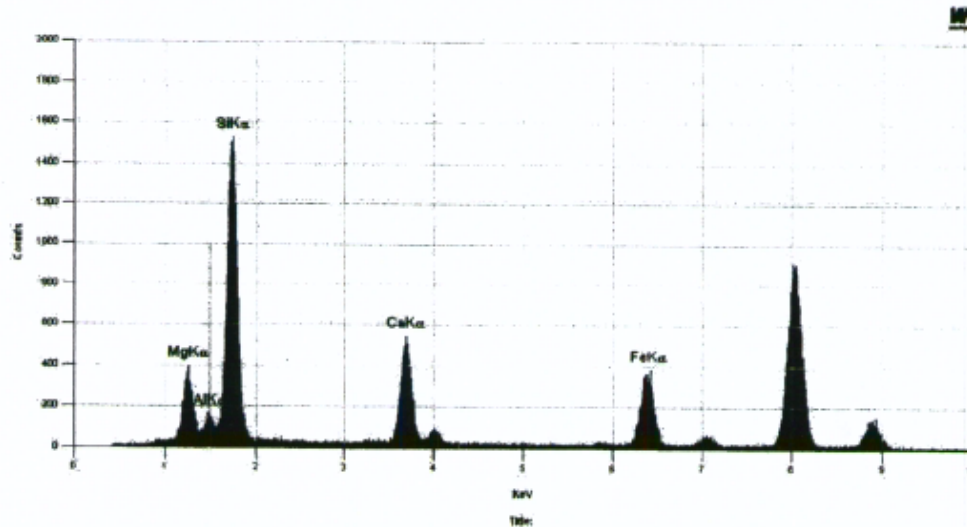
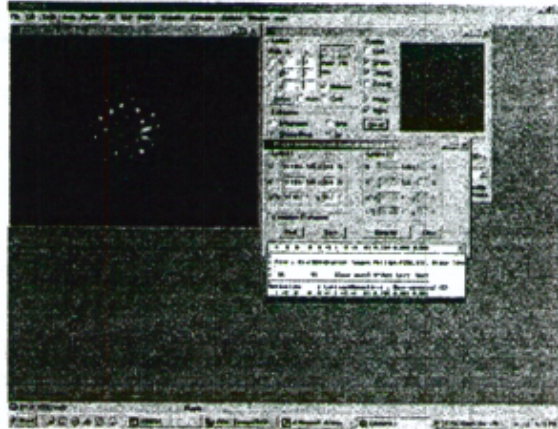
[3-31-05] iTEM Image

Zone Axis [3 -1 0]



5650 : 1

2µm



WINEDS

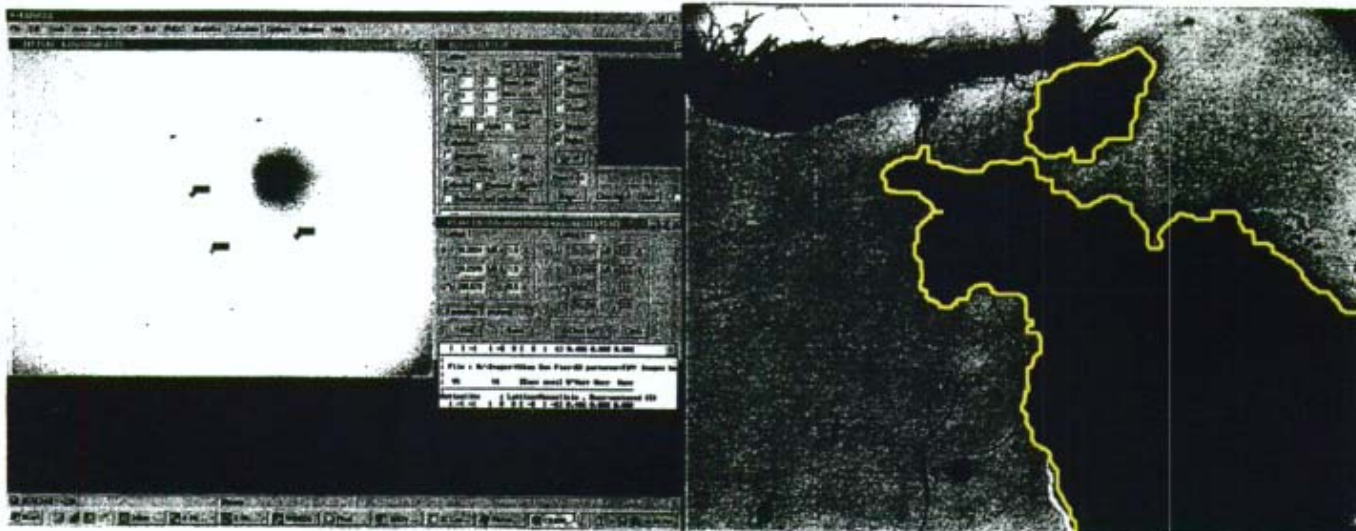
Quantitative Analysis Results - Standardless Analysis :
041210-47 EDS#15959 EDS Spectrum Thu, Mar 31 2005
EDS Parameters - 100KV, Takeoff Angle: 38.0°, Fit Index: 6.63

Element	Atoms%	Compound	Weight%	Error(±)	Norm%
Mg	8.40	MgO	15.43	0.78	15.43
Al	0.59	Al2O3	1.37	0.20	1.37
Si	20.98	SiO2	57.47	1.32	57.47
Ca	4.55	CaO	11.64	0.55	11.64
Fe	3.87	Fe2O3	14.08	0.89	14.08
<Total>	100.00		100.00		100.00

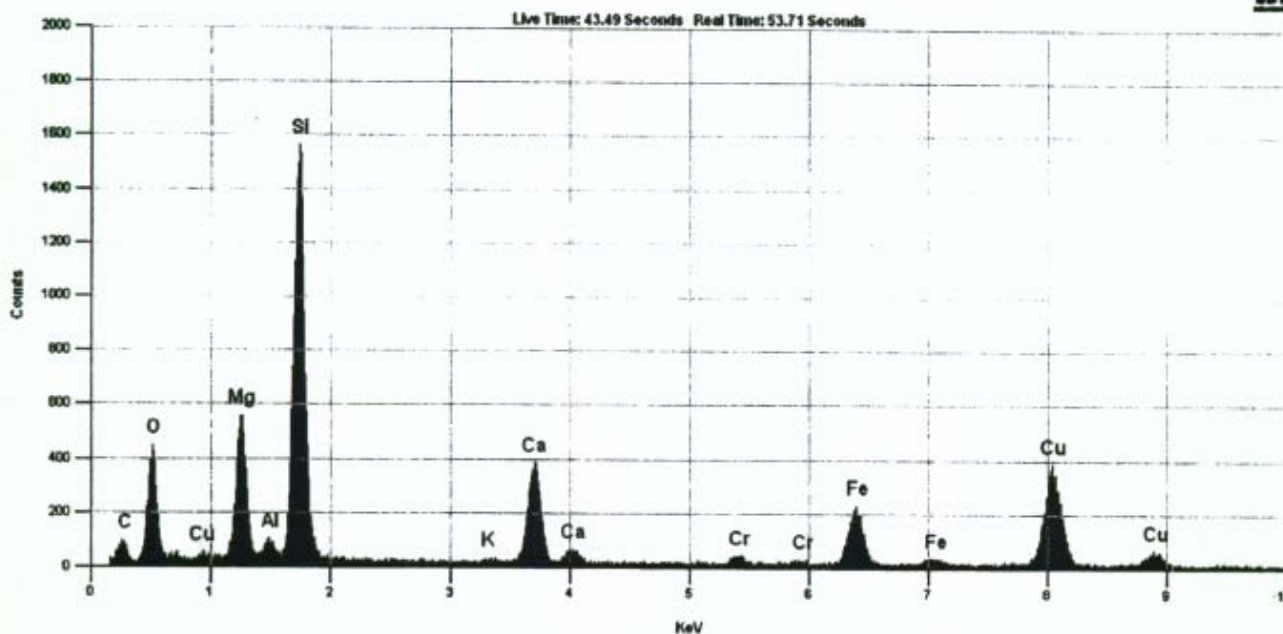
7619 6th Avenue NW, Seattle, WA 98117

www.labcor.net Phone: (206) 781-0155 (Office) Fax: (206) 789-8424 E-mail: mail@labcor.net

ACTINOLITE
 [5 1 6] Zone Axis
 041210-59, Neg#J1575



WINEDS

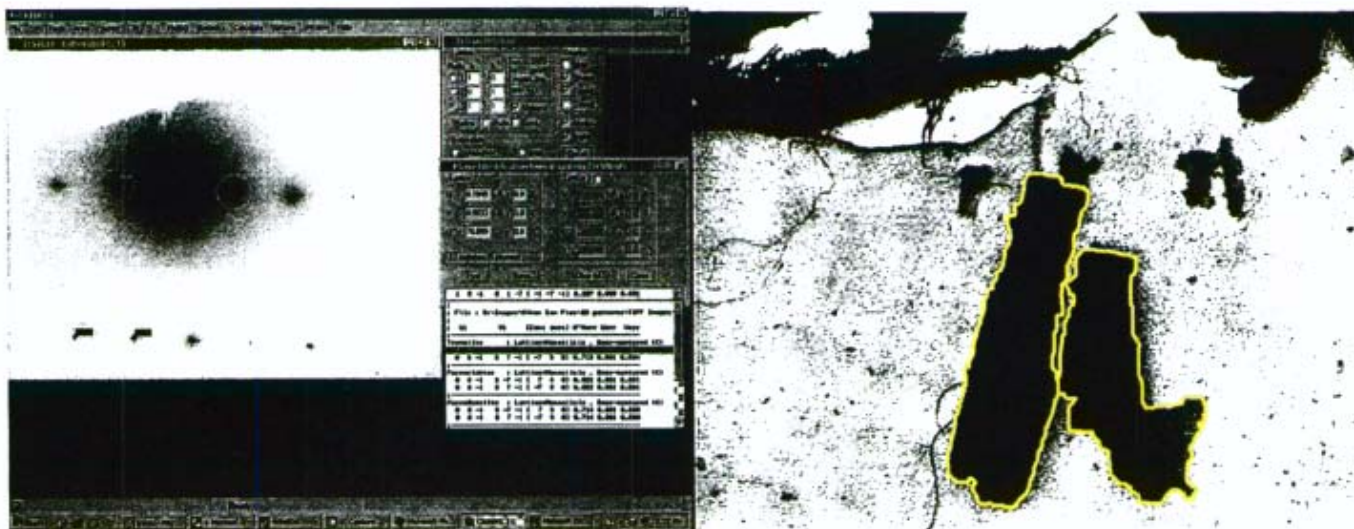


Title: 041210-59-SP1209 Time: 6:23:29 PM Date: Thu, Mar 31 2005 Accelerating Voltage: 100 kV Take Off Angle: 35 Degrees

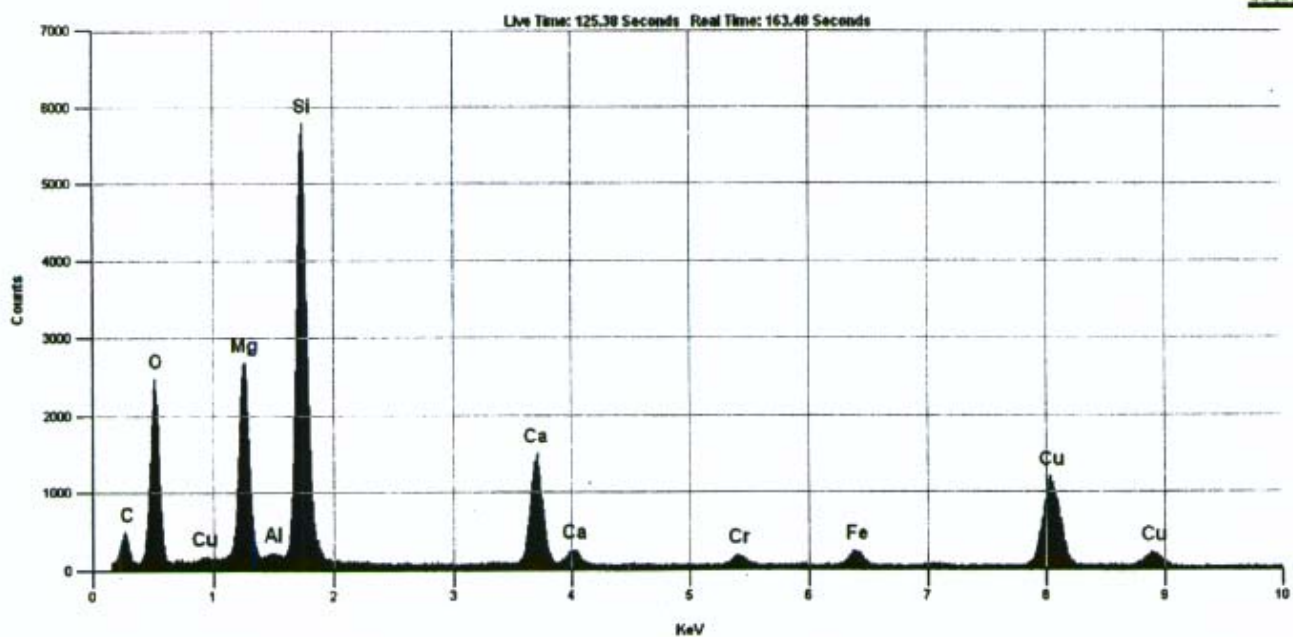
Quantitative Analysis Results - Standardless Analysis :
 041210-59-SP1209 Thu, Mar 31 2005
 EDS Parameters - 100KV, Takeoff Angle: 35.0°, Fit Index: 139.66
 Correction: CLIFF LORIMER, Cycles: 1

Element	Atoms%	Compound	Weight%	Error(±)	Norm%
Mg	8.15	MgO	15.13	0.45	15.13
Al	0.35	Al2O3	0.83	0.16	0.83
Si	21.87	SiO2	60.51	1.13	60.51
K	0.12	K2O	0.25	0.14	0.25
Ca	4.87	CaO	12.56	0.56	12.56
Fe	2.92	Fe2O3	10.72	0.74	10.72
<Total>	100.00		100.00		100.00

TREMOLITE
 [7 3 0] Zone Axis
 041210-59, Neg#J1576



WINEDS



Title: 041210-59-SP1210 Time: 12:36:40 PM Date: Fri, Apr 01 2005 Accelerating Voltage: 100 KV Take Off Angle: 35 Degrees

Quantitative Analysis Results - Standardless Analysis :

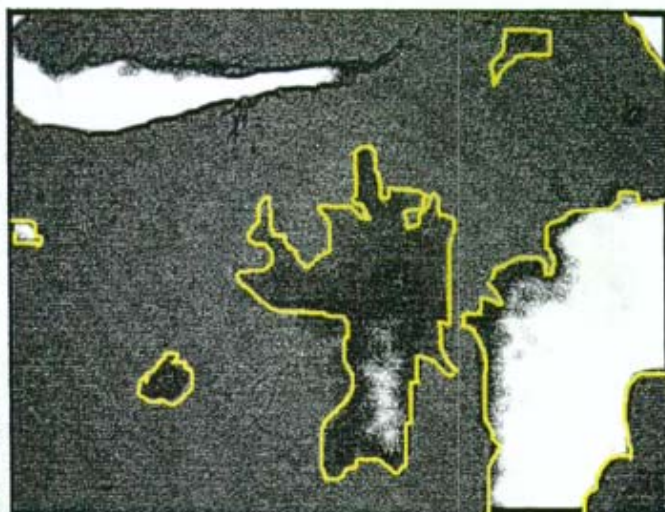
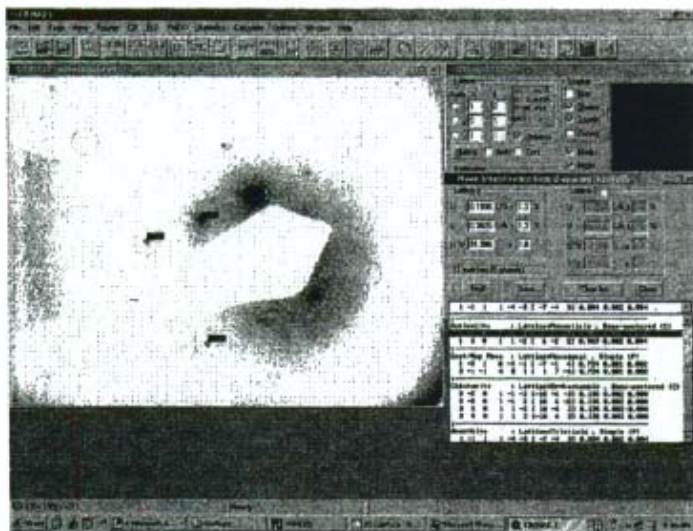
041210-59-SP1210 Fri, Apr 01 2005

EDS Parameters - 100KV, Takeoff Angle: 35.0°, Fit Index: 254.32

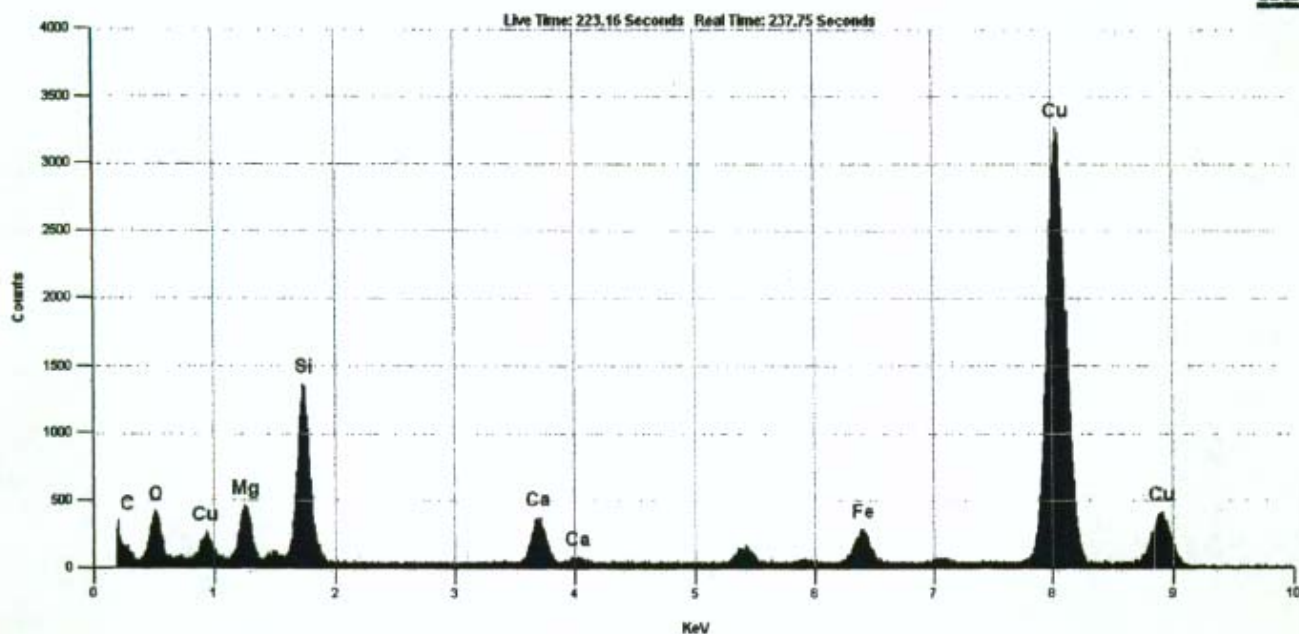
Correction: CLIFF LORIMER, Cycles: 1

Element	Atoms%	Compound	Weight%	Error(±)	Norm%
Mg	11.49	MgO	21.96	0.29	21.96
Si	21.71	SiO2	61.86	0.61	61.86
Ca	5.03	CaO	13.38	0.31	13.38
Fe	0.74	Fe2O3	2.81	0.24	2.81
<Total>	100.00		100.00		100.00

Actinolite
Sample 041188-109 Neg #J1337
[3 1 1]



WNEEDS

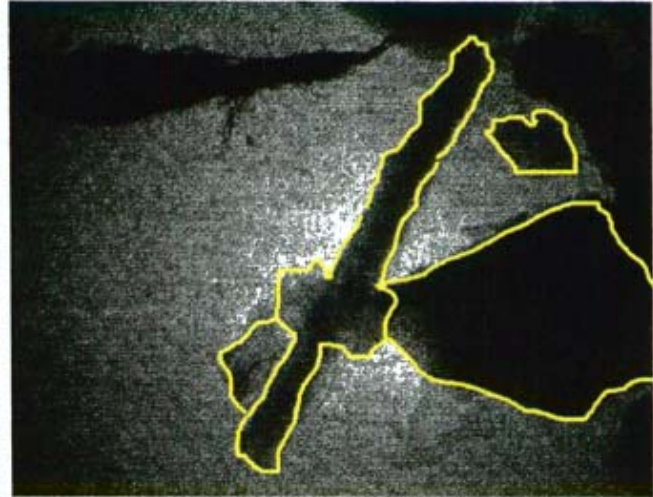
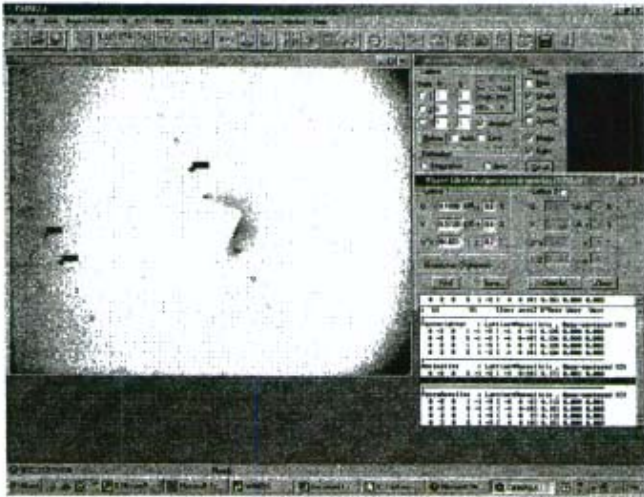


Title: 041188-109-998 Time: 9:11:16 AM Date: Wed, Jan 26 2005 Accelerating Voltage: 100 KV Take Off Angle: 35 Degrees

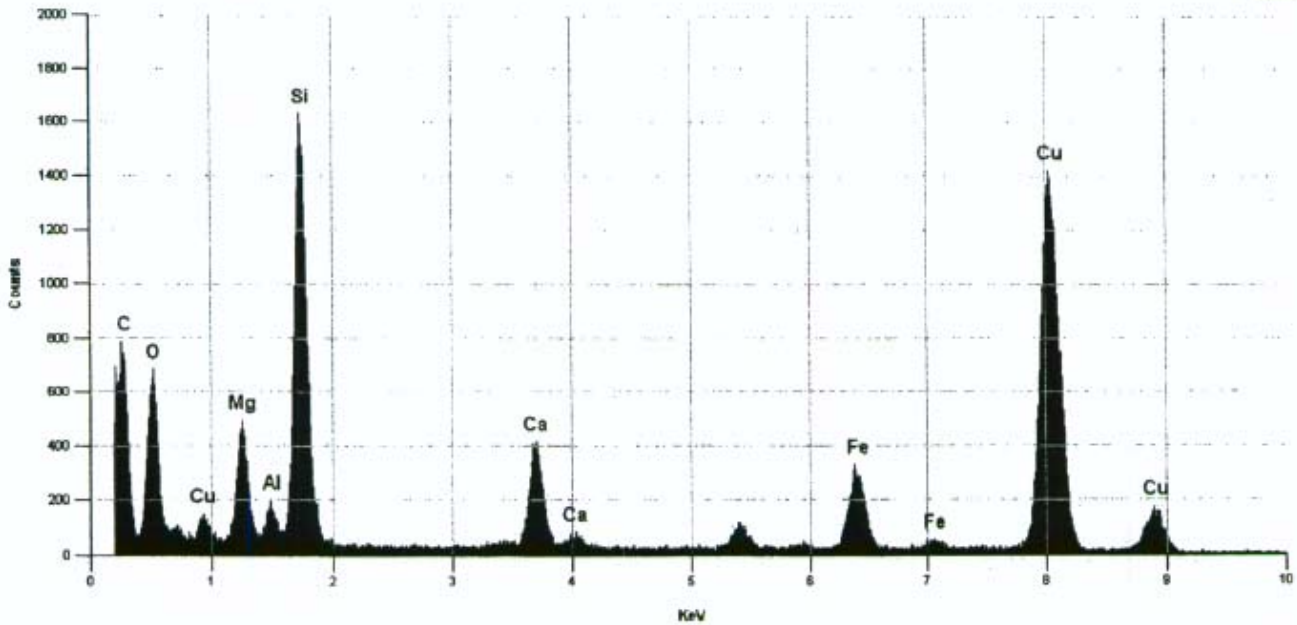
Quantitative Analysis Results - Standardless Analysis :
041188-109-998 Wed, Jan 26 2005
 EDS Parameters - 100KV, Takeoff Angle: 35.0°, Fit Index: 95.08
 Correction: CLIFF LORIMER, Cycles: 1

Element	Atoms%	Compound	Weight%	Error(±)	Norm%
Mg	7.72	MgO	14.09	0.49	14.09
Si	21.43	SiO2	58.32	1.09	58.32
Ca	4.84	CaO	12.29	0.52	12.29
Fe	4.23	Fe2O3	15.30	0.87	15.30
<Total>	100.00		100.00		100.00

Actinolite
Sample 041188-114 Neg #J1332
[2 0 5] Zone Axis



WINEDS

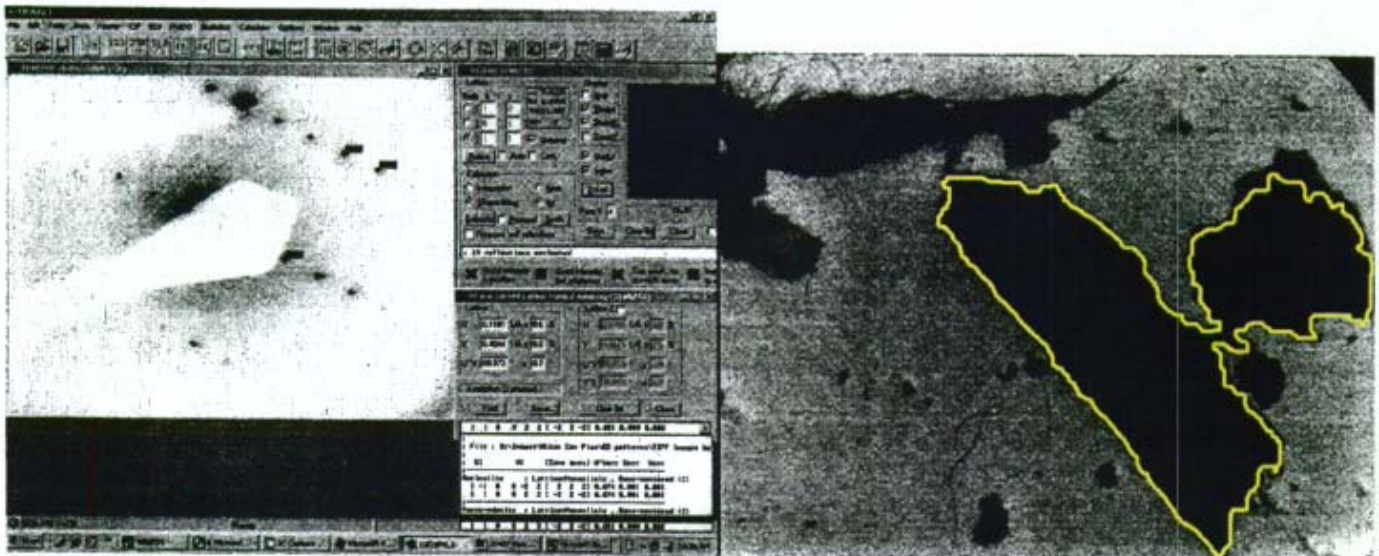


Title: 041188-114-995 Time: 12:52:37 PM Date: Tue, Jan 25 2005

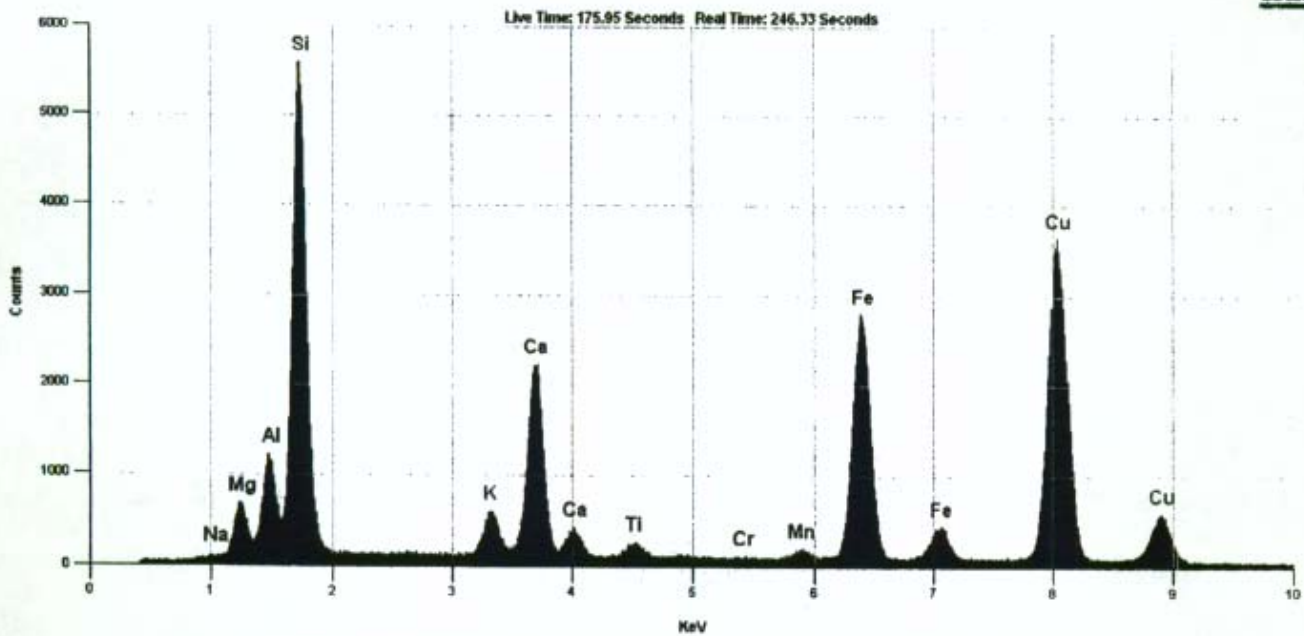
Quantitative Analysis Results - Standardless Analysis :
041188-114-995 Tue, Jan 25 2005
EDS Parameters - 100KV, Takeoff Angle: 35.0°, Fit Index: 243.34
Correction: CLIFF LORIMER, Cycles: 1

Element	Atoms%	Compound	Weight%	Error(±)	Norm%
Mg	7.14	MgO	13.00	0.39	13.00
Al	1.00	Al2O3	2.31	0.18	2.31
Si	20.81	SiO2	56.44	0.93	56.44
Ca	4.88	CaO	12.36	0.46	12.36
Fe	4.41	Fe2O3	15.90	0.79	15.90
<Total>	100.00		100.00		100.00

FERRO-EDENITE
[1 1]
041188-40, Neg#J1482



WINEDS

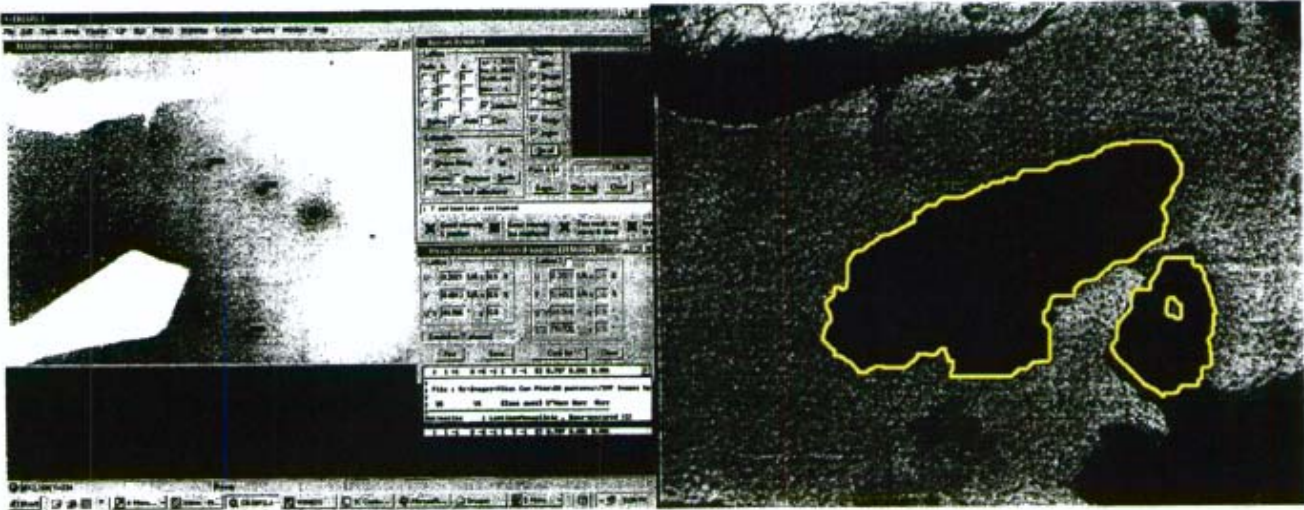


Title: 041188-40 SP 15862 Time: 10:48:36 PM Date: Thu, Mar 03 2005 Accelerating Voltage: 100 KV Take Off Angle: 38 Degrees

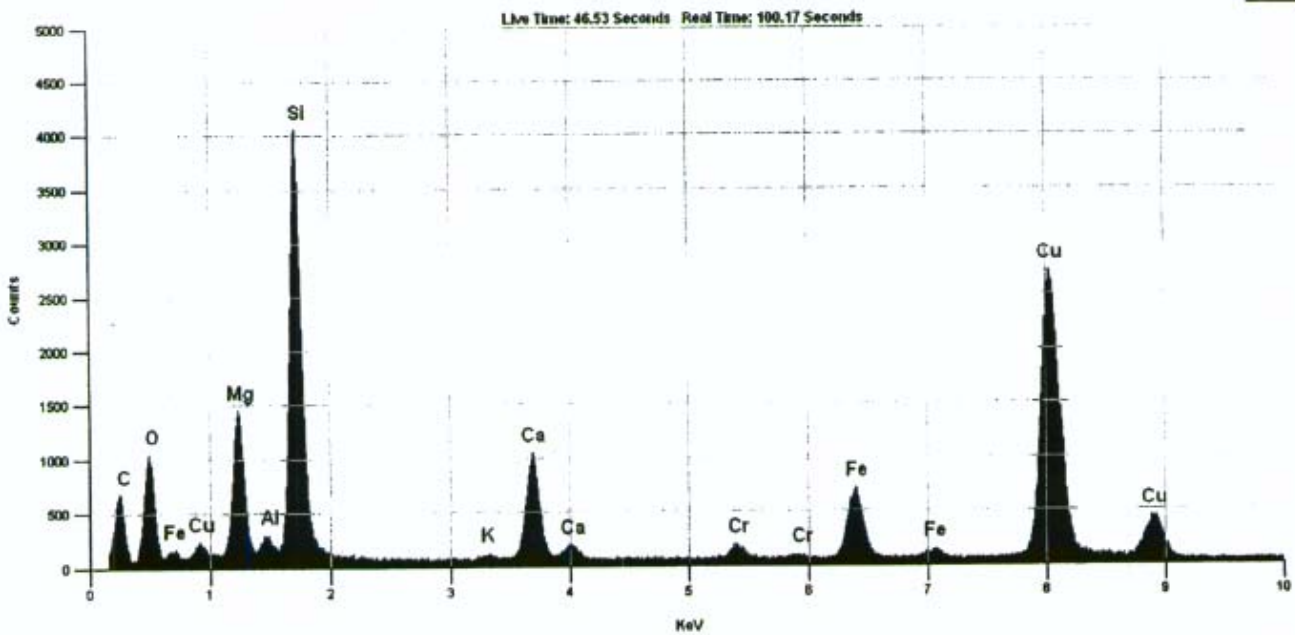
Quantitative Analysis Results - Standardless Analysis :
Spectrum1 041188-40 SP 15862 Thu, Mar 03 2005
EDS Parameters - 100KV, Takeoff Angle: 38.0°, Fit Index: 4.65
Correction: CLIFF LORIMER, Cycles: 1

Element	Atoms%	Compound	Weight%	Error(±)	Norm%
Mg	3.65	MgO	6.29	0.24	6.29
Al	1.67	Al2O3	3.64	0.11	3.64
Si	18.93	SiO2	48.56	0.57	48.56
K	1.43	K2O	2.87	0.15	2.87
Ca	5.06	CaO	12.11	0.26	12.11
Fe	7.78	Fe2O3	26.53	0.54	26.53
<Total>	100.00		100.00		100.00

ACTINOLITE
[9 1 8]
041188-47, Neg#J1560



WINEDS



Title: 041188-47-SP1194 Time: 2:11:20 PM Date: Wed, Mar 23 2005 Accelerating Voltage: 100 KV Take Off Angle: 35 Degrees

Quantitative Analysis Results - Standardless Analysis :
041188-47-SP1194 Wed, Mar 23 2005
EDS Parameters - 100KV, Takeoff Angle: 35.0°, Fit Index: 157.62
Correction: CLIFF LORIMER, Cycles: 1

Element	Atoms%	Compound	Weight%	Error (±)	Norm%
Mg	7.44	MgO	13.58	0.34	13.58
Al	0.47	Al2O3	1.08	0.12	1.08
Si	21.12	SiO2	57.45	0.82	57.45
K	0.19	K2O	0.41	0.11	0.41
Ca	5.31	CaO	13.49	0.42	13.49
Fe	3.87	Fe2O3	13.99	0.60	13.99
<Total>	100.00		100.00		100.00

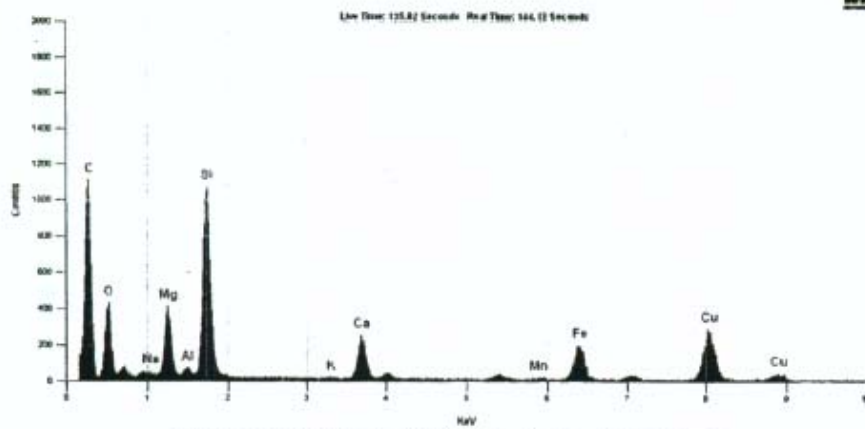
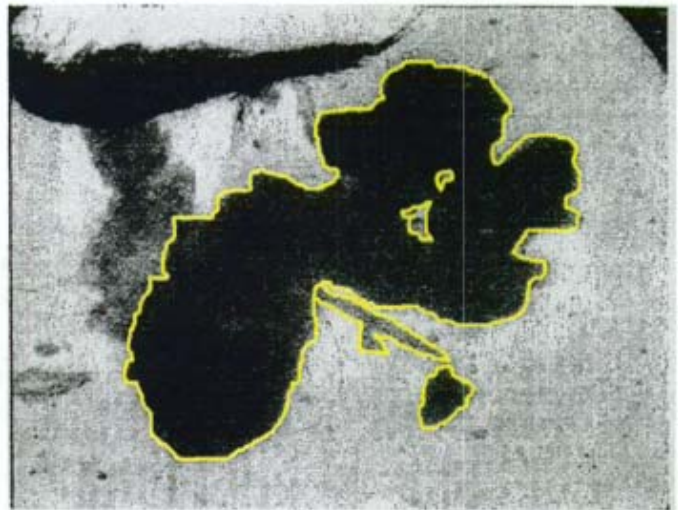
Lab/Cor, Inc.

A Professional Service Corporation in the Northwest

ACTINOLITE - Zone Axis [5 1 6]

Neg# J1573 Job# 041188-48

JEOL 1200EX - Gatan Image



File: 041188-48.SP 1207 Time: 2:10:25 PM Date: Wed, Mar 30 2005 Accelerating Voltage: 100 kV Take Off Angle: 35 Degree

Quantitative Analysis Results - Standardless Analysis :
 041188-48 SP 1207 Wed, Mar 30 2005
 EDS Parameters - 100KV, Takeoff Angle: 35.0°, Fit Index: 237.79
 Correction: CLIFF LORIMER, Cycles: 1

Element	Atoms%	Compound	Weight%	Error(±)	Norm%
Na	0.38	Na2O	0.54	0.32	0.54
Mg	8.20	MgO	15.08	0.56	15.08
Al	0.36	Al2O3	0.84	0.21	0.84
Si	21.19	SiO2	58.09	1.35	58.09
K	0.11	K2O	0.24	0.17	0.24
Ca	4.36	CaO	11.15	0.63	11.15
Fe	3.66	Fe2O3	14.05	1.03	14.05
<Total>	100.00		100.00		100.00

Lab/Cor, Inc.

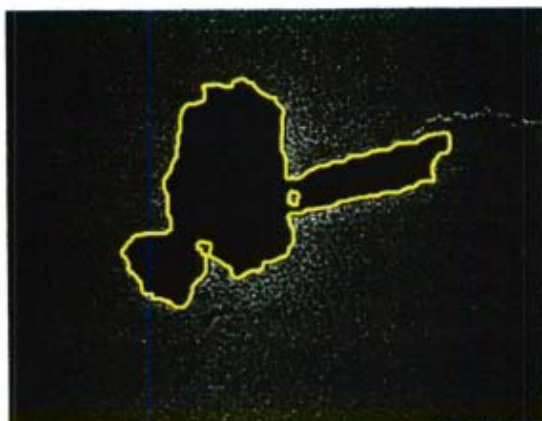
A Professional Service Corporation in the Northwest

Actinolite

Neg#[259]; [Job# 041188-86]

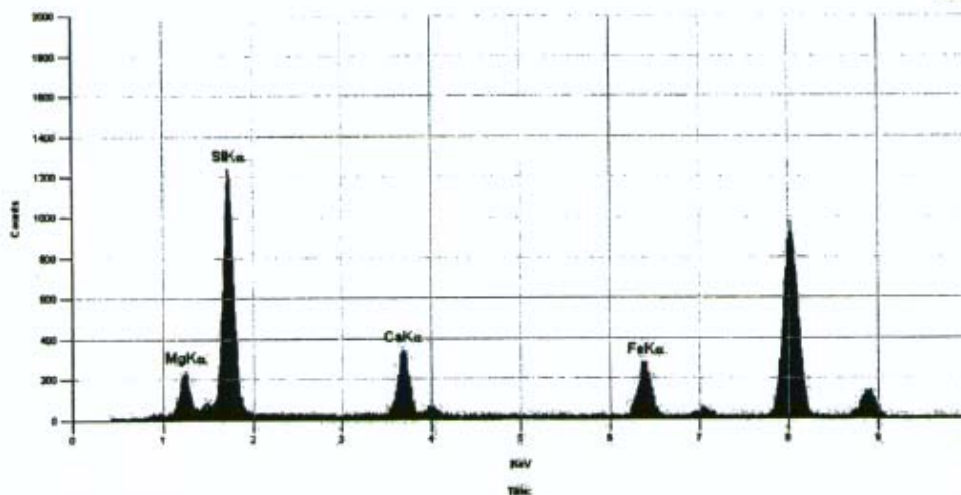
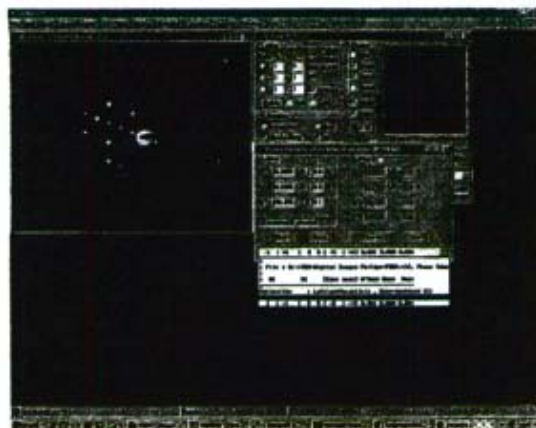
[4/1/05] iTEM Image

Zone Axis [5 1 4]



13900 : 1

1µm



Quantitative Analysis Results - Standardless Analysis :
04188-86 EDS#15962 Fri, Apr 01 2005
EDS Parameters - 100KV, Takeoff Angle: 38.0°, Fit Index: 13.08

Element	Atom%	Compound	Weight%	Error(±)	Norm%
Mg	6.93	MgO	12.71	1.01	12.71
Si	22.42	SiO2	61.35	1.91	61.35
Ca	4.35	CaO	11.11	0.70	11.11
Fe	4.08	Fe2O3	14.83	1.17	14.83
<Total>	100.00		100.00		100.00

7619 6th Avenue NW, Seattle, WA 98117

www.labcor.net Phone: (206) 781-0155 (Office) Fax: (206) 789-8424 E-mail: mail@labcor.net

Lab/Cor, Inc.

A Professional Service Corporation in the Northwest

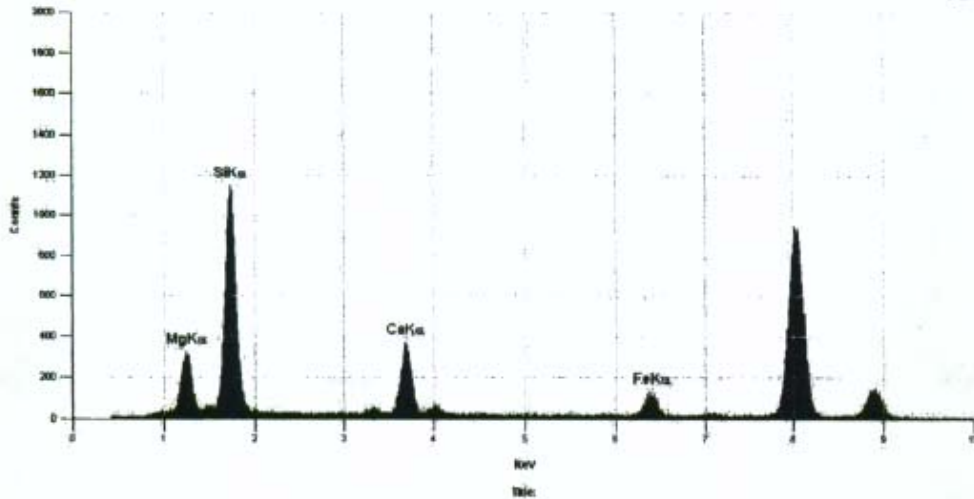
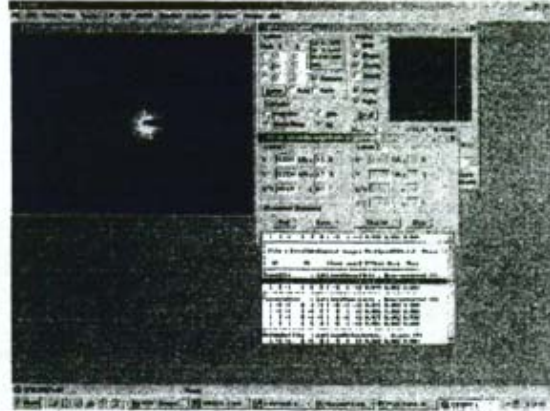
TREMOLITE

Neg#[260]; [Job# 041188-86]
[4/1/05] iTEM Image
Zone Axis [5 1 4]



13900 : 1

1µm



WINEEDS

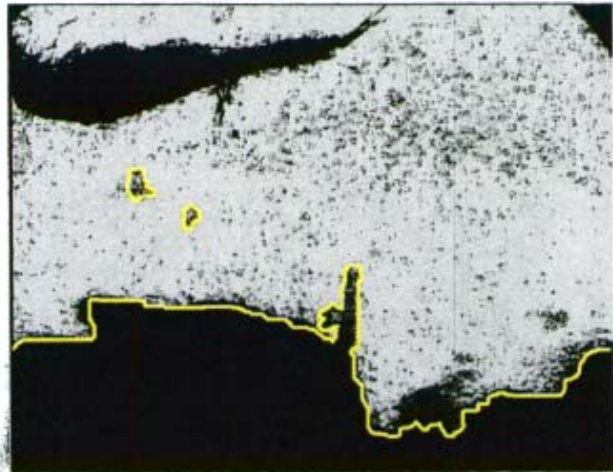
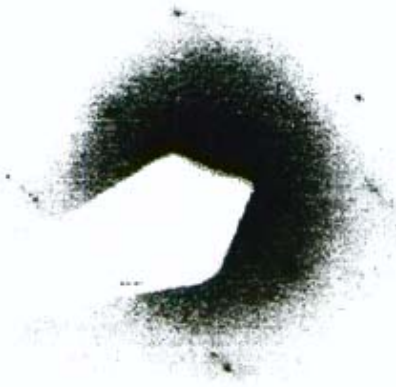
Quantitative Analysis Results - Standardless Analysis :
041188-86 EDS# 15963 Fri, Apr 01 2005
EDS Parameters - 100KV, Takeoff Angle: 38.0°, Fit Index: 9.72

Element	Atoms%	Compound	Weight%	Error(±)	Norm%
Mg	9.79	MgO	18.51	1.19	18.51
Si	22.25	SiO2	62.68	1.89	62.68
Ca	4.50	CaO	11.83	0.71	11.83
Fe	1.87	Fe2O3	6.99	0.82	6.99
<Total>	100.00		100.00		100.00

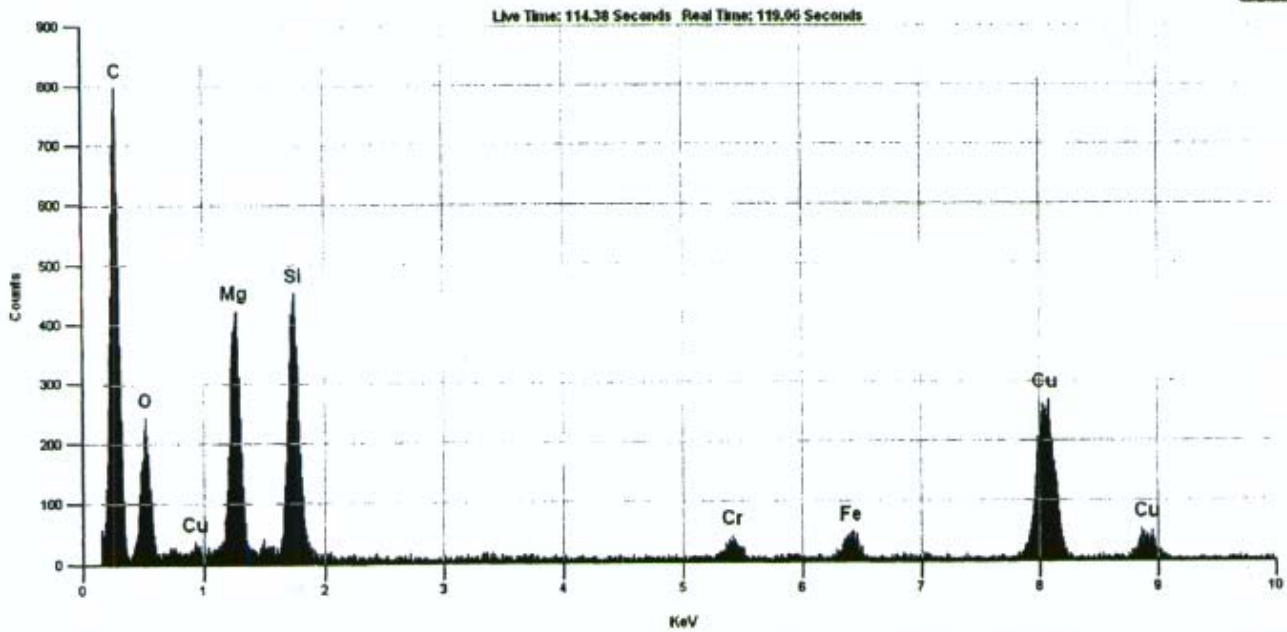
7619 6th Avenue NW, Seattle, WA 98117

www.labcor.net Phone: (206) 781-0155 (Office) Fax: (206) 789-8424 E-mail: mail@labcor.net

CHRYSOTILE
041188-98, Neg#J1563



WNEDS

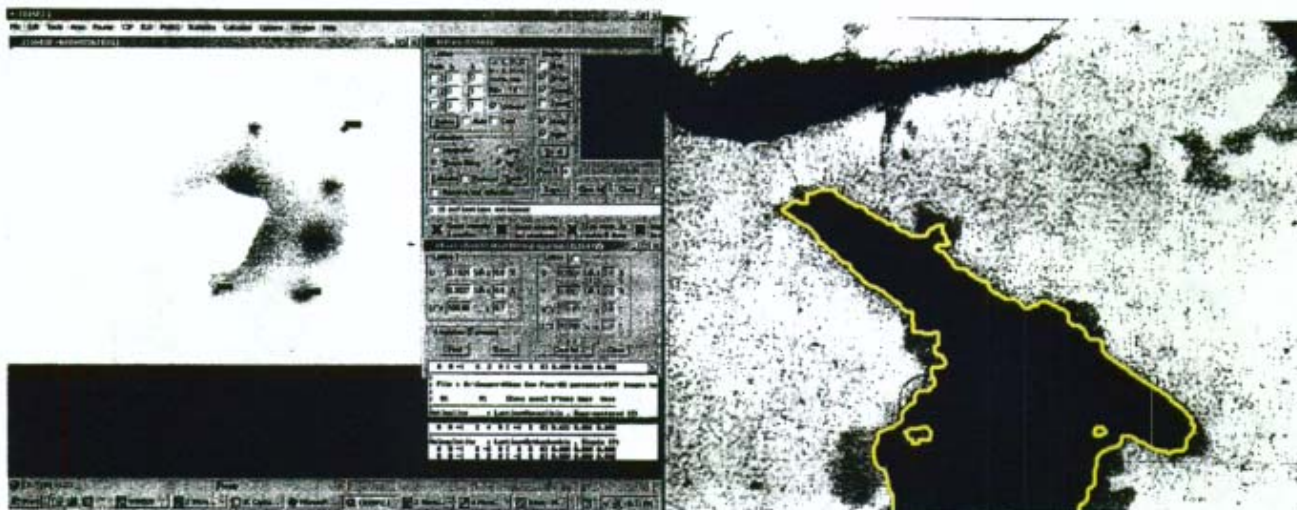


Title: 041188-98-SP1198 Time: 3:51:00 PM Date: Thu, Mar 24 2005 Accelerating Voltage: 100 KV Take Off Angle: 35 Degrees

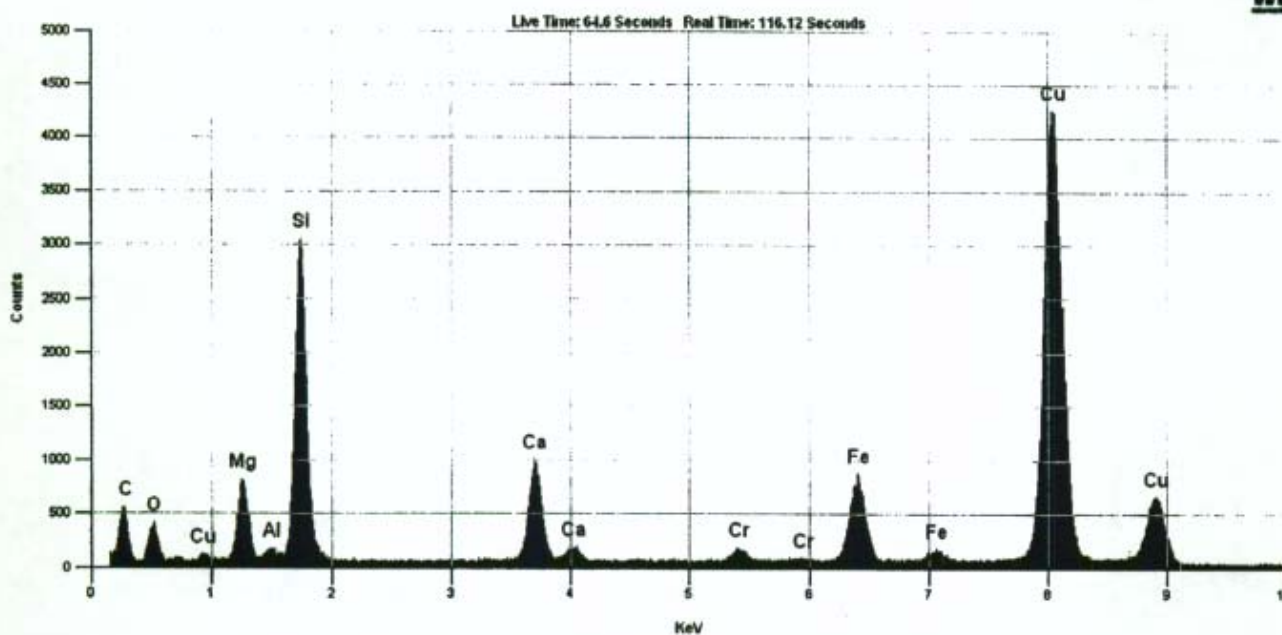
Quantitative Analysis Results - Standardless Analysis :
041188-98-SP1198 Thu, Mar 24 2005
EDS Parameters - 100KV, Takeoff Angle: 35.0°, Fit Index: 296.88
Correction: CLIFF LORIMER, Cycles: 1

Element	Atoms%	Compound	Weight%	Error(±)	Norm%
Mg	19.95	MgO	39.33	1.12	39.33
Si	19.00	SiO2	55.84	1.59	55.84
Fe	1.24	Fe2O3	4.83	0.73	4.83
<Total>	100.00		100.00		100.00

ACTINOLITE
 [2 1 0] Zone
 041188-98, Neg#J1564



WINEDS

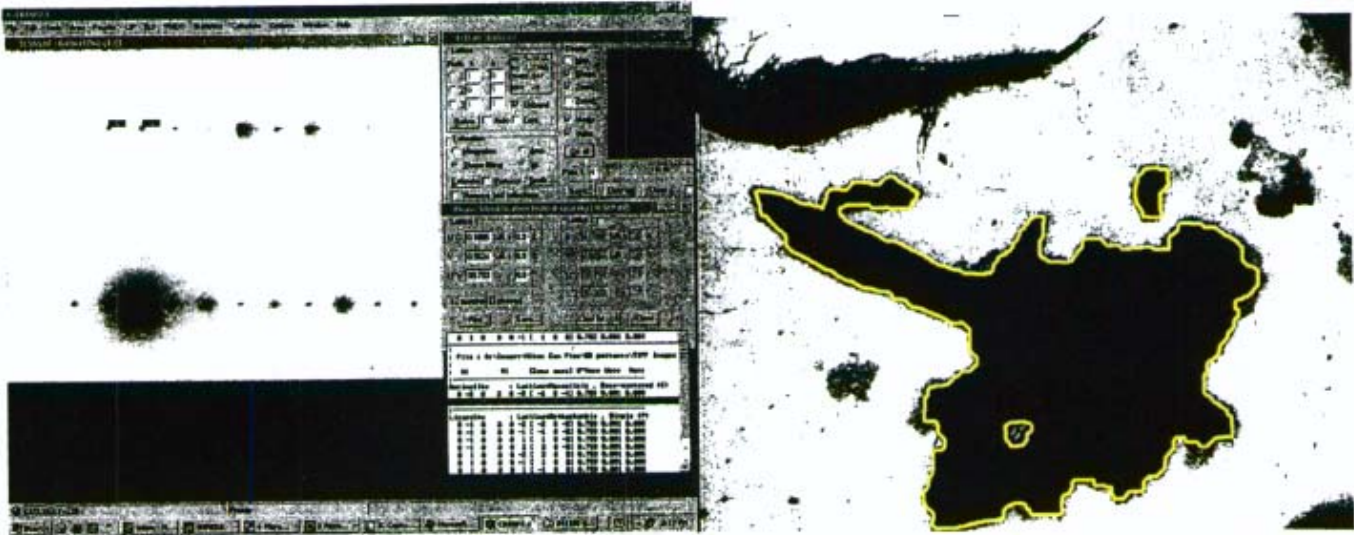


Title: 041188-98-SP1199 Time: 4:52:35 PM Date: Thu, Mar 24 2005 Accelerating Voltage: 100 kV Take Off Angle: 35 Degrees

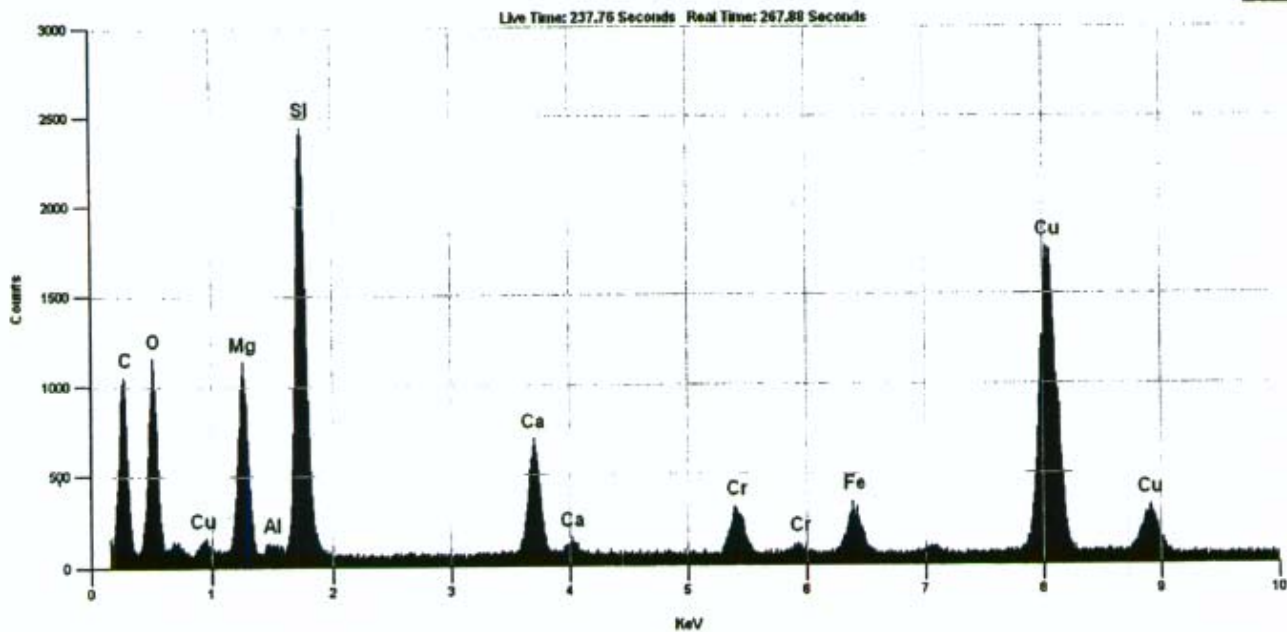
Quantitative Analysis Results - Standardless Analysis :
 041188-98-SP1199 Thu, Mar 24 2005
 EDS Parameters - 100KV, Takeoff Angle: 35.0°, Fit Index: 100.07
 Correction: CLIFF LORIMER, Cycles: 1

Element	Atoms%	Compound	Weight%	Error(±)	Norm%
Na	0.42	Na2O	0.58	0.13	0.58
Mg	5.83	MgO	10.50	0.22	10.50
Al	0.63	Al2O3	1.43	0.10	1.43
Si	20.88	SiO2	56.03	0.59	56.03
Ca	5.90	CaO	14.78	0.33	14.78
Fe	4.68	Fe2O3	16.68	0.49	16.68
<Total>	100.00		100.00		100.00

ACTINOLITE
 [3 0 2] Zone
 041188-101, Neg#J1565



WINEDS



Title: 041188-101-SP1200 Time: 2:39:58 PM Date: Sat, Mar 26 2005 Accelerating Voltage: 100 KV Take Off Angle: 35 Degrees

Quantitative Analysis Results - Standardless Analysis :
 Spectrum# 041188-101-SP1200 Sat, Mar 26 2005
 EDS Parameters - 100KV, Takeoff Angle: 35.0°, Fit Index: 171.90
 Correction: CLIFF LORIMER, Cycles: 1

Element	Atoms%	Compound	Weight%	Error(±)	Norm%
Mg	10.44	MgO	19.59	0.41	19.59
Al	0.08	Al ₂ O ₃	0.18	0.13	0.18
Si	21.17	SiO ₂	59.20	0.87	59.20
Ca	5.15	CaO	13.43	0.46	13.43
Fe	2.04	Fe ₂ O ₃	7.59	0.56	7.59
<Total>	100.00		100.00		100.00

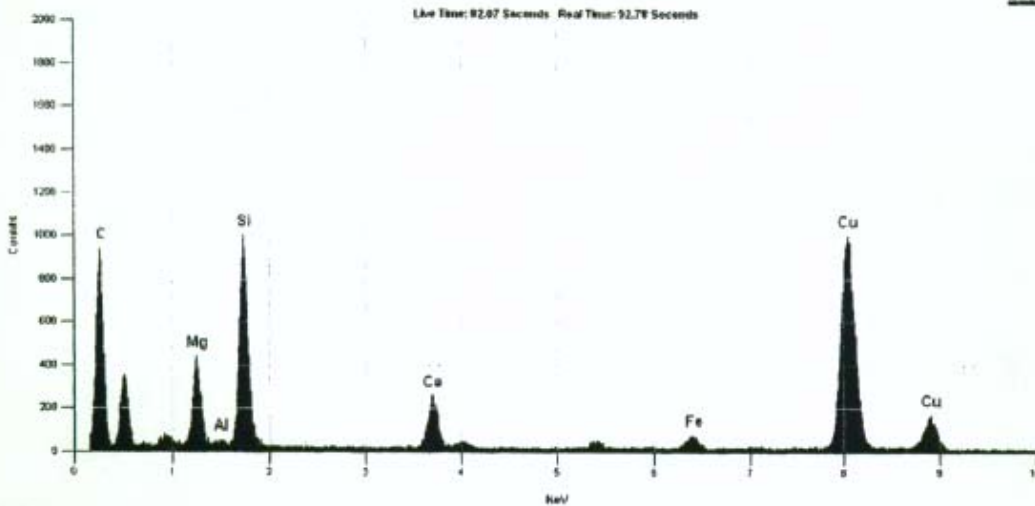
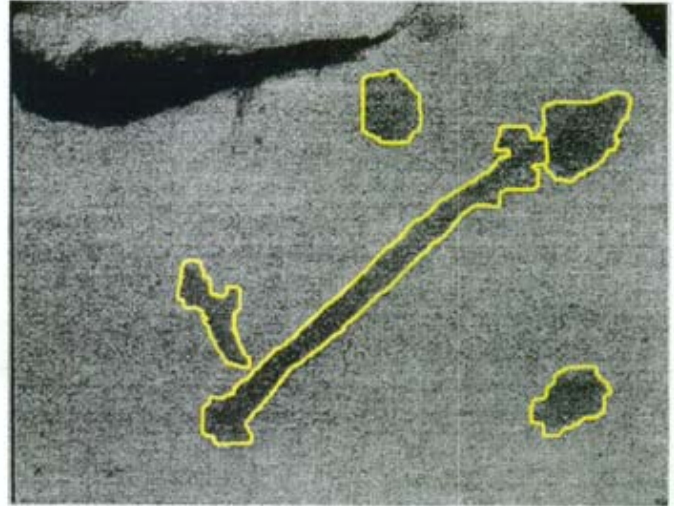
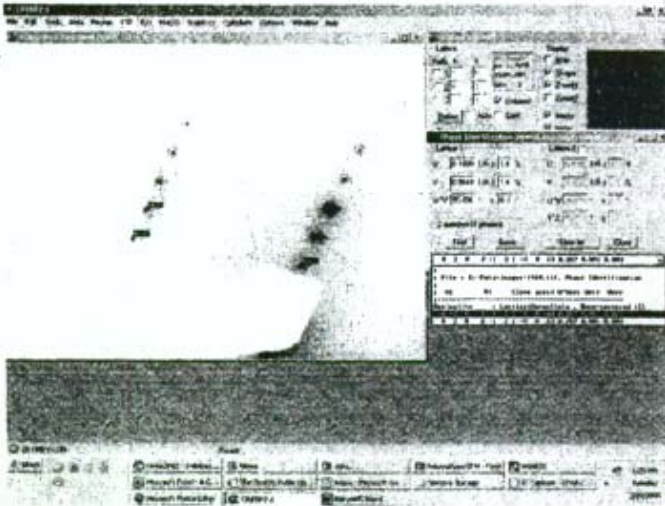
Lab/Cor, Inc.

A Professional Service Corporation in the Northwest

ACTINOLITE - Zone Axis [2 0 -3]

Neg# J1569 Job# 041188-103

JEOL 1200EX - Gatan Image



File: 041188-103 SP 1203 Tue, Mar 29 2005 Accelerating Voltage: 100 kV Take Off Angle: 35 Degrees

Quantitative Analysis Results - Standardless Analysis :

041188-103 SP 1203 Tue, Mar 29 2005

EDS Parameters - 100KV, Takeoff Angle: 35.0°, Fit Index: 251.88

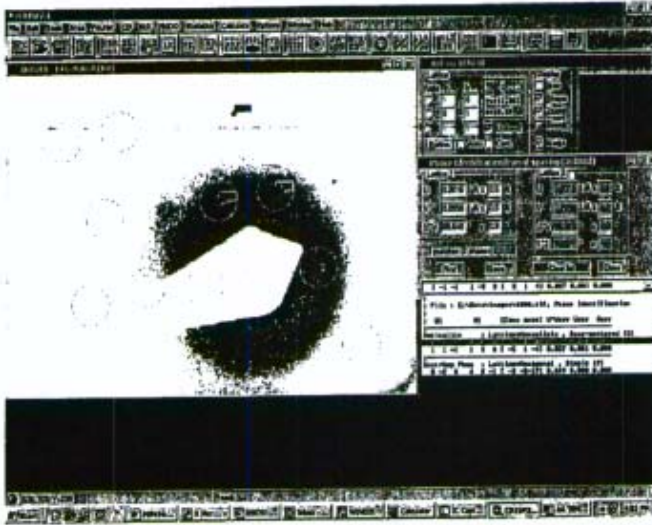
Correction: CLIFF LORIMER, Cycles: 1

Element	Atoms%	Compound	Weight%	Error(±)	Norm%
Mg	9.88	MgO	18.82	0.70	18.82
Al	0.15	Al2O3	0.36	0.22	0.36
Si	22.49	SiO2	63.85	1.54	63.85
Ca	4.77	CaO	12.64	0.75	12.64
Fe	1.15	Fe2O3	4.33	0.73	4.33
<Total>	100.00		100.00		100.00

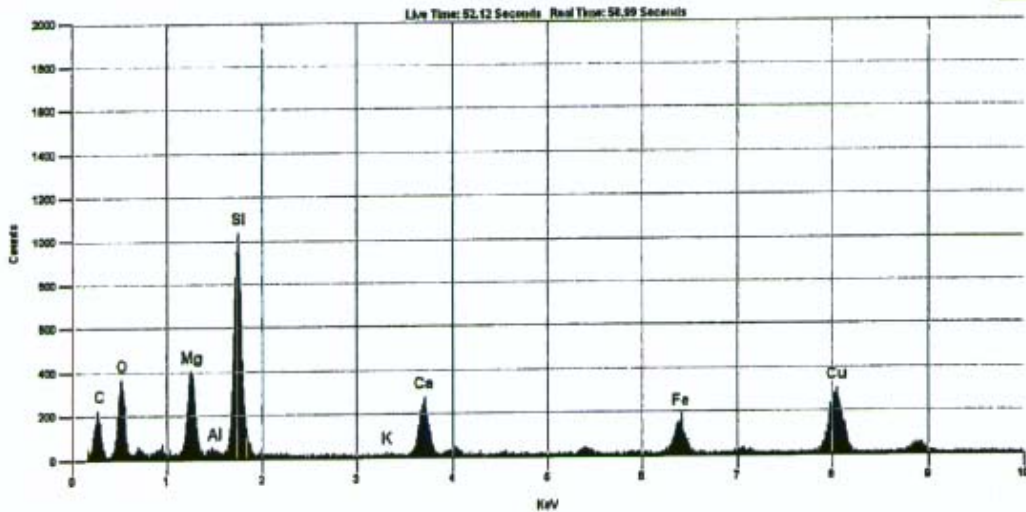
Lab/Cor, Inc.

A Professional Service Corporation in the Northwest

ACTINOLITE - Zone Axis [5 1 4]
 Neg# J1600 Job# 050680-01
 JEOL 1200EX - Gatan Image



WINEDS



Title: 050680-01 SP 1231 Time: 4:07:04 PM Date: Mon, Apr 18 2005 Accelerating Voltage: 100 KV Take Off Angle: 35 Degree

Quantitative Analysis Results - Standardless Analysis :
 050680-01 SP 1231 Mon, Apr 18 2005
 EDS Parameters - 100KV, Takeoff Angle: 35.0°, Fit Index: 167.80
 Correction: CLIFF LORIMER, Cycles: 1

Element	Atoms%	Compound	Weight%	Error(±)	Norm%
Mg	9.47	MgO	17.51	0.59	17.51
Si	21.07	SiO2	58.07	1.28	58.07
K	0.08	K2O	0.18	0.16	0.18
Ca	4.89	CaO	12.58	0.66	12.58
Fe	3.18	Fe2O3	11.66	0.89	11.66
<Total>	100.00		100.00		100.00

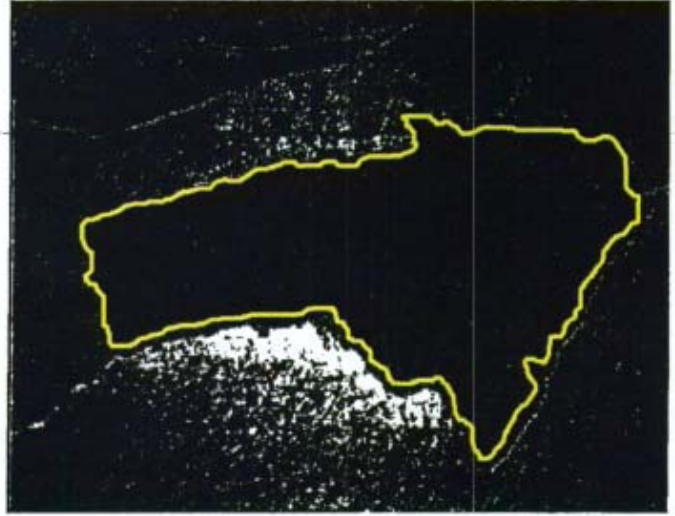
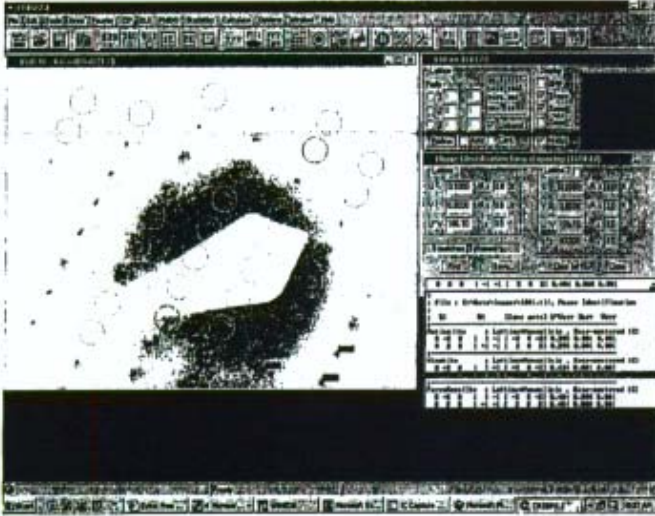
Lab/Cor, Inc.

A Professional Service Corporation in the Northwest

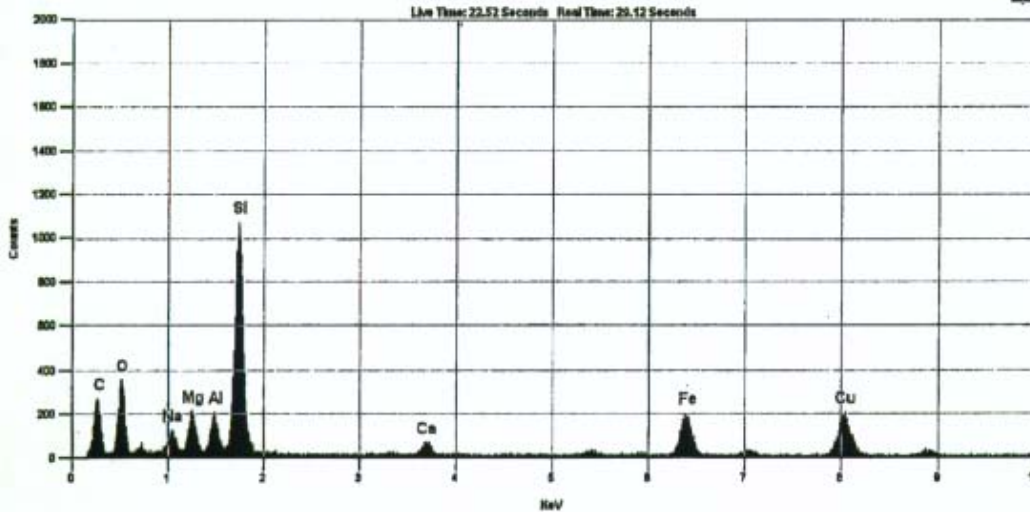
WINCHITE - Zone Axis [1 0 1]

Neg# J1601 Job# 050680-01

JEOL 1200EX - Gatan Image



WINEDS



Title: 050680-01 SP 1232 Time: 16:20:54 AM Date: Tue, Apr 19 2005 Accelerating Voltage: 100 kV Take Off Angle: 35 Degree

Quantitative Analysis Results - Standardless Analysis :

050680-01 SP 1232 Tue, Apr 19 2005

EDS Parameters - 100KV, Takeoff Angle: 35.0°, Fit Index: 183.23

Correction: CLIFF LORIMER, Cycles: 1

Element	Atoms%	Compound	Weight%	Error(±)	Norm%
Na	2.57	Na2O	3.71	0.42	3.71
Mg	4.38	MgO	8.23	0.49	8.23
Al	1.76	Al2O3	4.17	0.31	4.17
Si	23.50	SiO2	65.75	1.50	65.75
Ca	1.19	CaO	3.12	0.39	3.12
Fe	4.04	Fe2O3	15.02	1.05	15.02
<Total>	100.00		100.00		100.00

Lab/Cor, Inc.

A Professional Service Corporation in the Northwest

ACTINOLITE

Neg#[337]; [Job#050680-02]

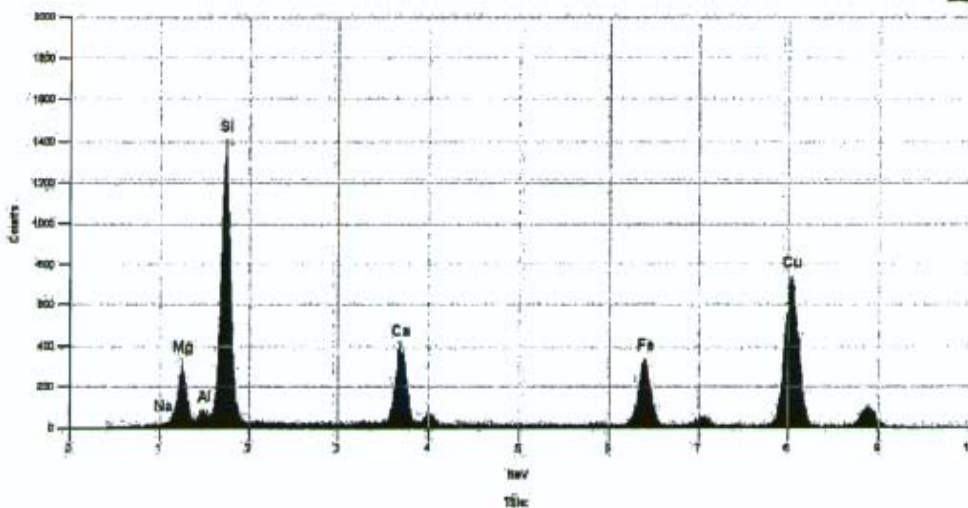
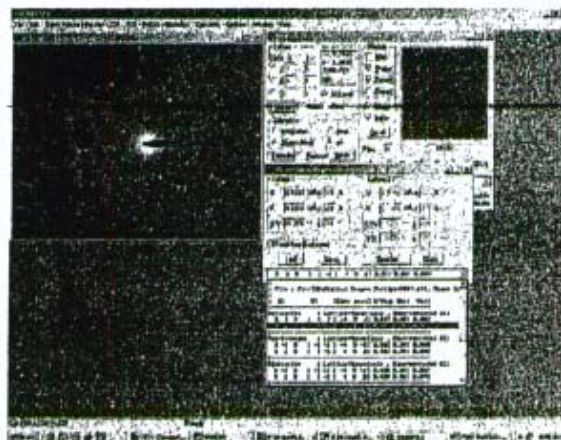
[4/20/05] iTEM Image

Zone Axis [2 0 1]



10200 : 1

2µm



WINEDS

Quantitative Analysis Results - Standardless Analysis :
050680-02 EDS#16053 Wed, Apr 20 2005
EDS Parameters - 100KV, Takeoff Angle: 38.0°, Fit Index: 7.23

Element	Atoms%	Compound	Weight%	Error(±)	Norm%
Mg	8.27	MgO	15.21	0.70	15.21
Al	0.29	Al ₂ O ₃	0.67	0.17	0.67
Si	21.43	SiO ₂	58.74	1.34	58.74
Ca	4.14	CaO	10.58	0.53	10.58
Fe	4.06	Fe ₂ O ₃	14.79	0.89	14.79
<Total>	100.00		100.00		100.00

7619 6th Avenue NW, Seattle, WA 98117

www.labcor.net Phone: (206) 781-0155 (Office) Fax: (206) 789-8424 E-mail: mail@labcor.net

Lab/Cor, Inc.
A Professional Service Corporation in the Northwest

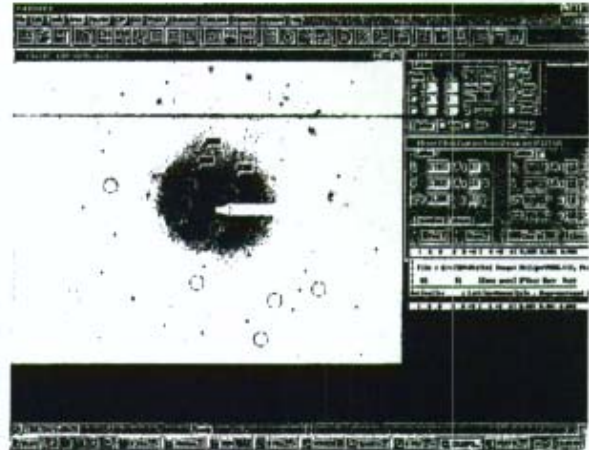
ACTINOLITE

Neg# [355]; [Job#050680-04]
 [4/22/05] iTEM Image
 Zone Axis [3 1 3]

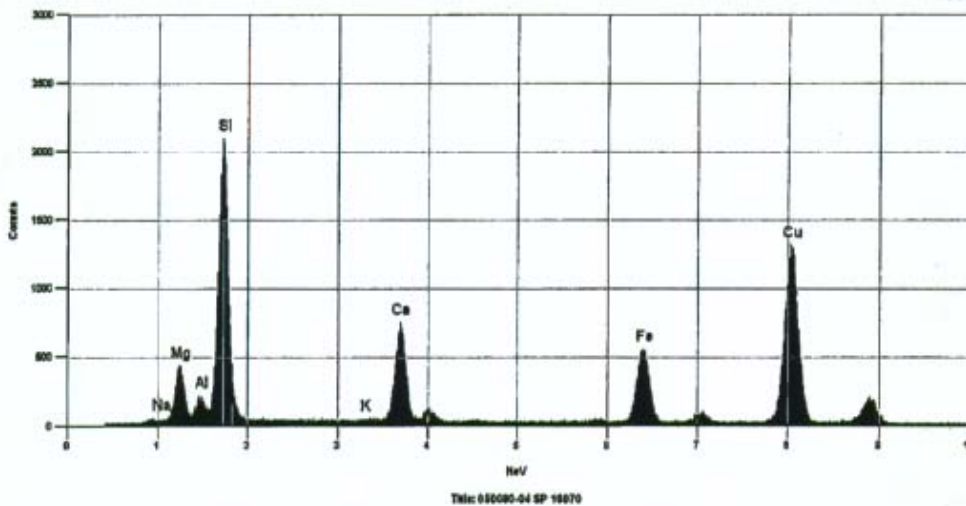


10200 : 1

2µm



WINEDS



Quantitative Analysis Results - Standardless Analysis :
 050680-04 SP 16070 Fri, Apr 22 2005
 EDS Parameters - 100KV, Takeoff Angle: 38.0°, Fit Index: 3.94
 Correction: CLIFF LORIMER, Cycles: 1

Element	Atom%	Compound	Weight%	Error(±)	Norm%
Mg	7.65	MgO	13.94	0.56	13.94
Al	0.65	Al ₂ O ₃	1.51	0.16	1.51
Si	20.87	SiO ₂	56.71	1.08	56.71
Ca	4.81	CaO	12.19	0.46	12.19
Fe	4.34	Fe ₂ O ₃	15.66	0.76	15.66
<Total>	100.00		100.00		100.00

Lab/Cor, Inc.

A Professional Service Corporation in the Northwest

ACTINOLITE

Neg#[329]; [Job#050680-06]

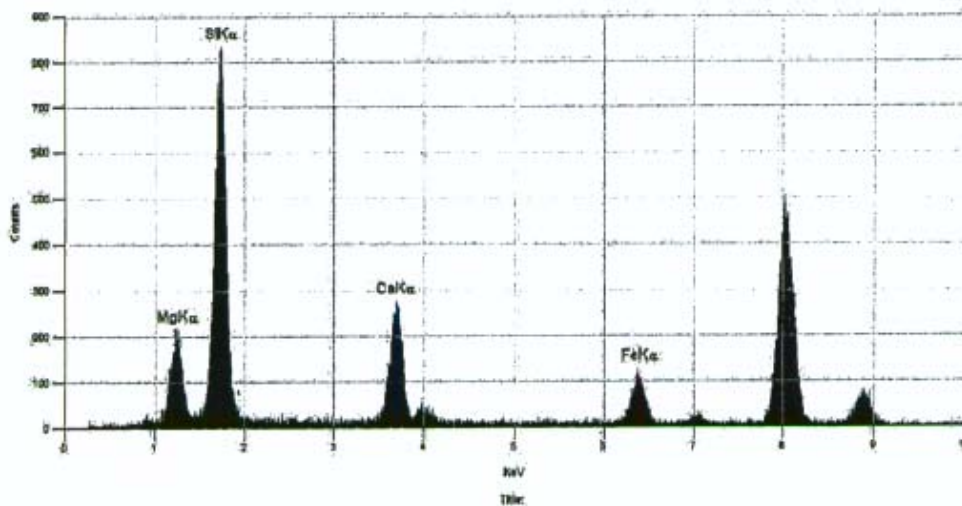
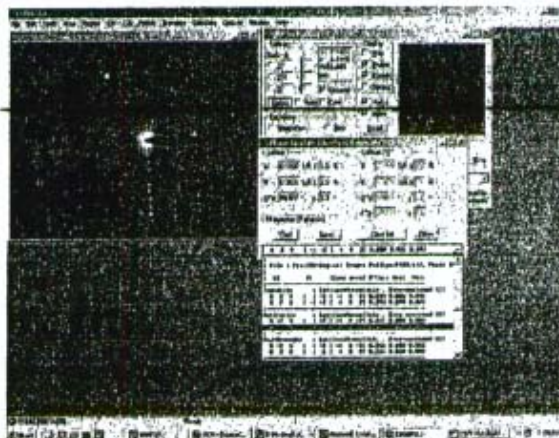
[4/18/05] iTEM Image

Zone Axis [2 0 1]



7950 : 1

2µm



Quantitative Analysis Results - Standardless Analysis :
 050680-01 EDS#16046 Mon, Apr 18 2005
 EDS Parameters - 100KV, Takeoff Angle: 38.0°, Fit Index: 30.30

Element	Atoms%	Compound	Weight%	Error(±)	Norm%
Mg	9.02	MgO	16.85	1.16	16.85
Si	21.97	SiO2	61.17	1.94	61.17
Ca	4.95	CaO	12.87	0.72	12.87
Fe	2.46	Fe2O3	9.10	0.86	9.10
<Total>	100.00		100.00		100.00

7619 6th Avenue NW, Seattle, WA 98117

www.labcor.net Phone: (206) 781-0155 (Office) Fax: (206) 789-8424 E-mail: mail@labcor.net

Lab/Cor, Inc.

A Professional Service Corporation in the Northwest

ACTINOLITE

Neg#[330]; [Job#050680-07]

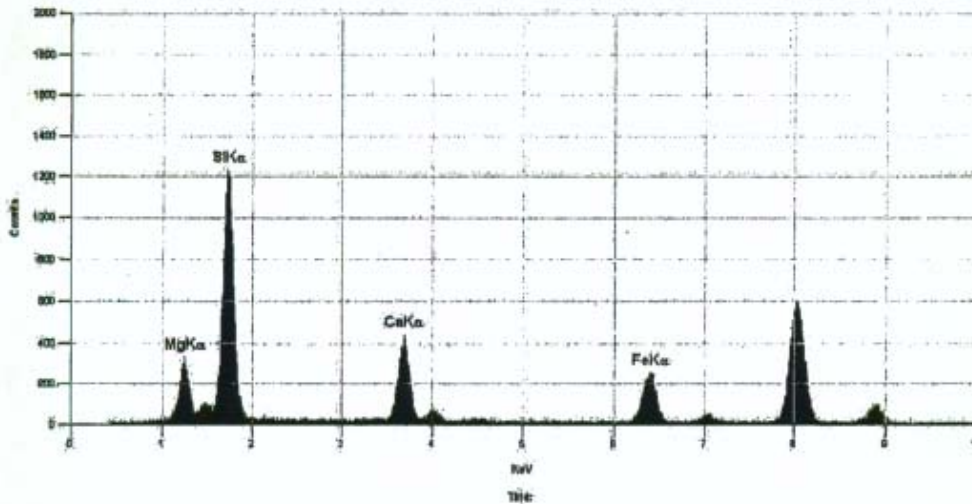
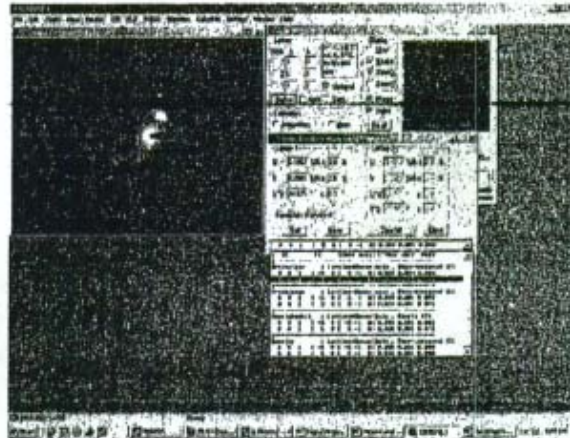
[4/18/05] iTEM Image

Zone Axis [5 -1 0]



11800:1

2µm



Quantitative Analysis Results - Standardless Analysis :
050680-07 EDS#16047 EDS Spectrum Mon, Apr 18 2005
EDS Parameters - 100KV, Takeoff Angle: 38.0°, Fit Index: 12.21

Element	Atoms%	Compound	Weight%	Error(±)	Norm%
Mg	9.35	MgO	17.27	0.98	17.27
Si	21.12	SiO2	58.16	1.71	58.16
Ca	4.78	CaO	12.28	0.65	12.28
Fe	3.36	Fe2O3	12.29	0.97	12.29
<Total>	100.00		100.00		100.00

7619 6th Avenue NW, Seattle, WA 98117

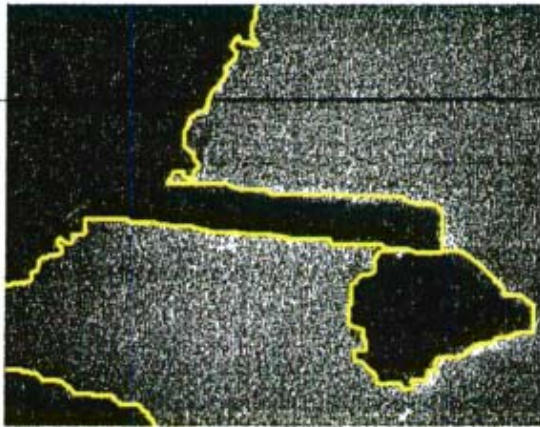
www.labcor.net Phone: (206) 781-0155 (Office) Fax: (206) 789-8424 E-mail: mail@labcor.net

Lab/Cor, Inc.

A Professional Service Corporation in the Northwest

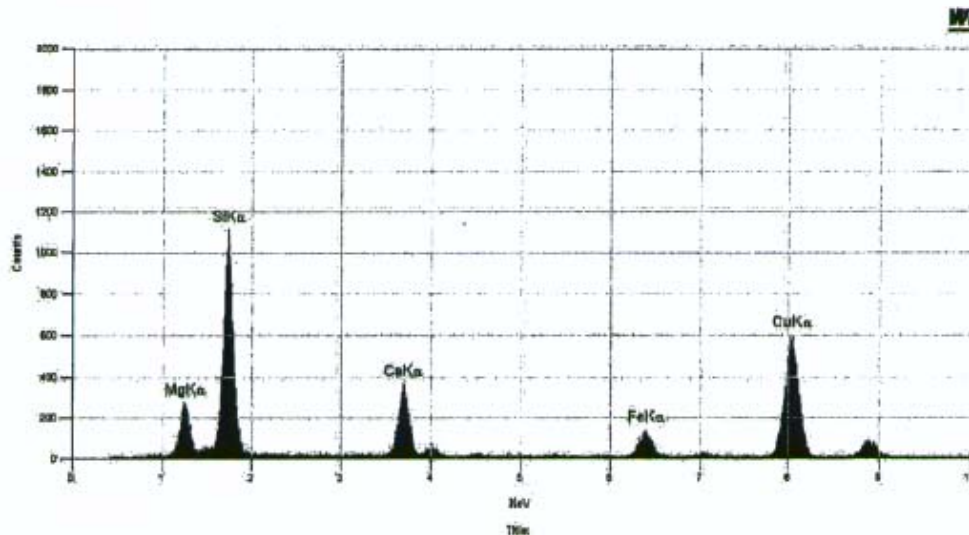
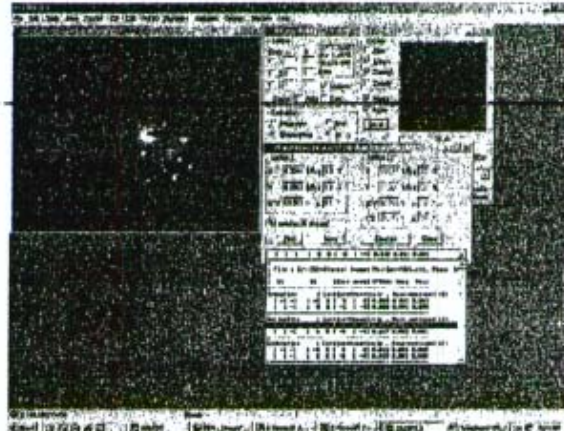
ACTINOLITE

Neg#[331]; [Job#050680-10]
[4/18/05] iTEM Image
Zone Axis [5 1 4]



13900 : 1

1µm



WINEDS

Quantitative Analysis Results - Standardless Analysis :
050680-10 EDS#16048 EDS Spectrum Mon, Apr 18 2005
EDS Parameters - 100KV, Takeoff Angle: 38.0°, Fit Index: 8.32

Element	Atoms%	Compound	Weight%	Error(±)	Norm%
Mg	9.78	MgO	18.44	1.11	18.44
Si	22.11	SiO2	62.14	1.91	62.14
Ca	4.61	CaO	12.09	0.72	12.09
Fe	1.96	Fe2O3	7.33	0.86	7.33
<Total>	100.00		100.00		100.00

7619 6th Avenue NW, Seattle, WA 98117

www.labcor.net Phone: (206) 781-0155 (Office) Fax: (206) 789-8424 E-mail: mail@labcor.net

Lab/Cor, Inc.

A Professional Service Corporation in the Northwest

ACTINOLITE

Neg#[268]; [Job#041191-04]

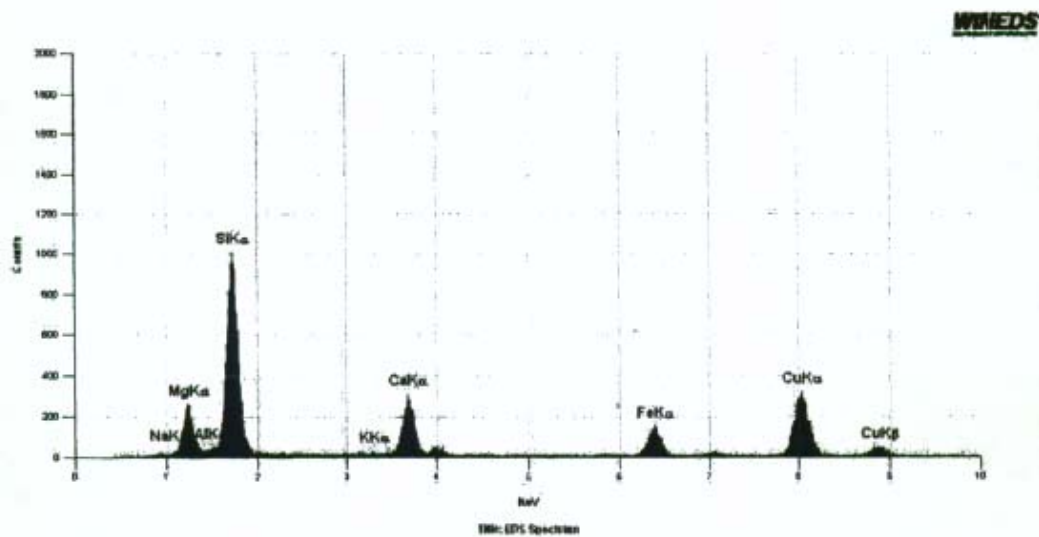
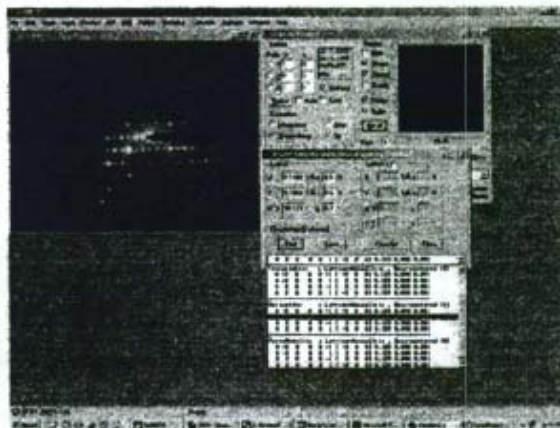
[4/5/05] iTEM Image

Zone Axis [1 0 0]



10200 : 1

2µm



Quantitative Analysis Results - Standardless Analysis :
041191-04 EDS#15977 EDS Spectrum Tue, Apr 05 2005
EDS Parameters - 100KV, Takeoff Angle: 38.0°, Fit Index: 22.60

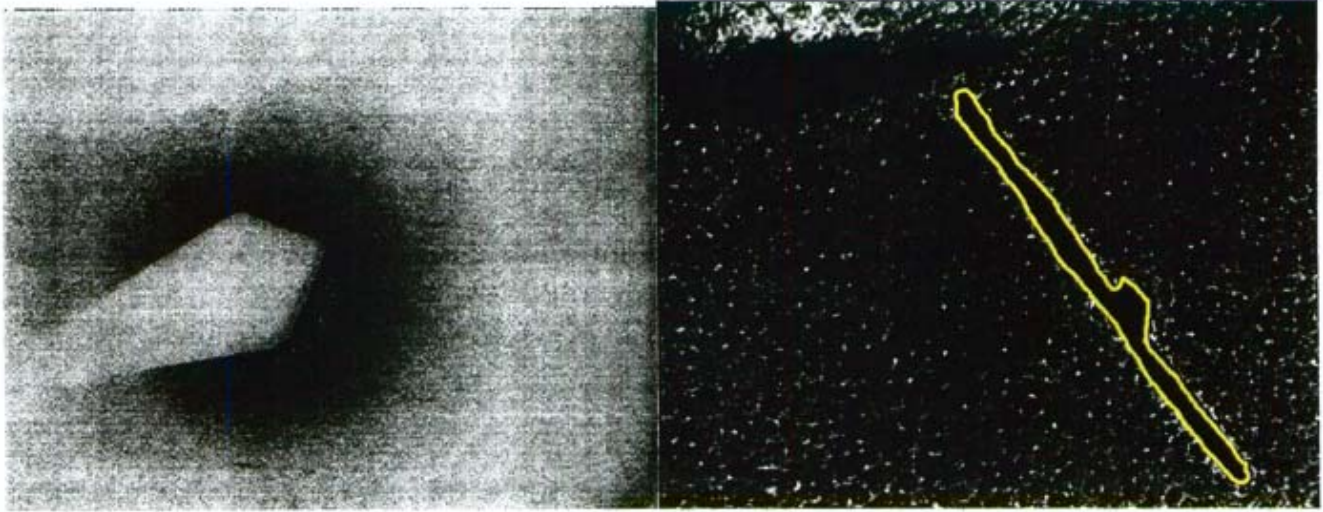
Element	Atoms%	Compound	Weight%	Error(±)	Norm%
Mg	9.45	MgO	17.71	1.08	17.71
Si	22.02	SiO2	61.51	2.02	61.51
Ca	4.26	CaO	11.11	0.77	11.11
Fe	2.61	Fe2O3	9.68	1.04	9.68
<Total>	100.00		100.00		100.00

7619 6th Avenue NW, Seattle, WA 98117

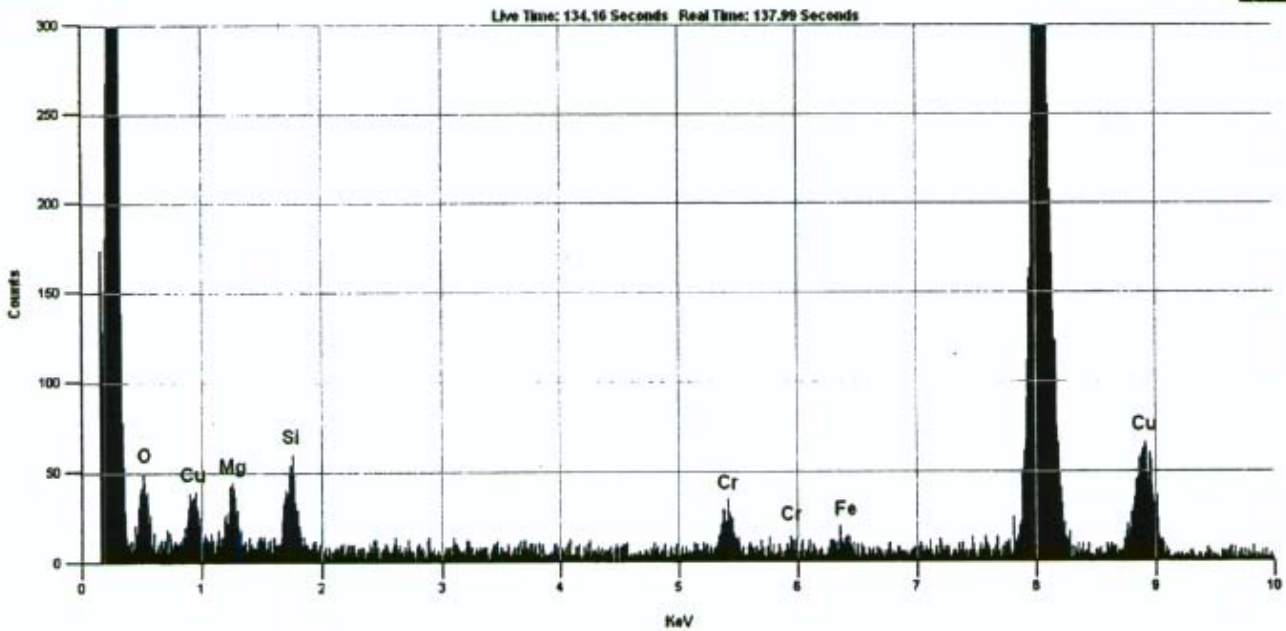
www.labcor.net Phone: (206) 781-0155 (Office) Fax: (206) 789-8424 E-mail: mail@labcor.net

CHRYSOTILE

041191-05, Neg#J1577



WINEDS

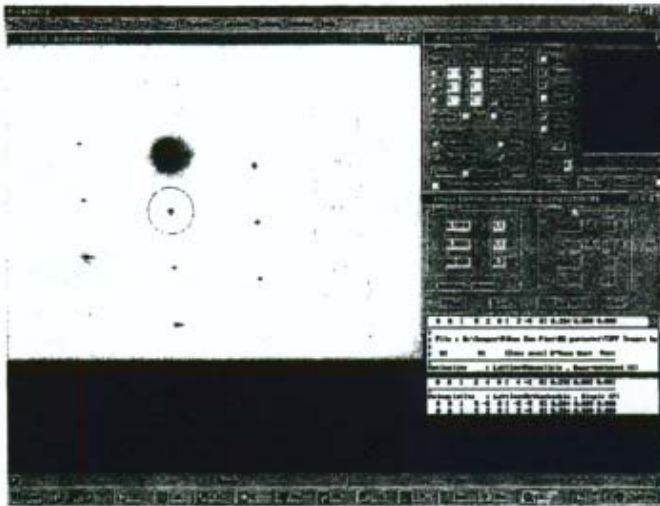


Title: 041191-05-SP1211 Time: 1:45:30 PM Date: Tue, Apr 05 2005 Accelerating Voltage: 100 KV Take Off Angle: 35 Degrees

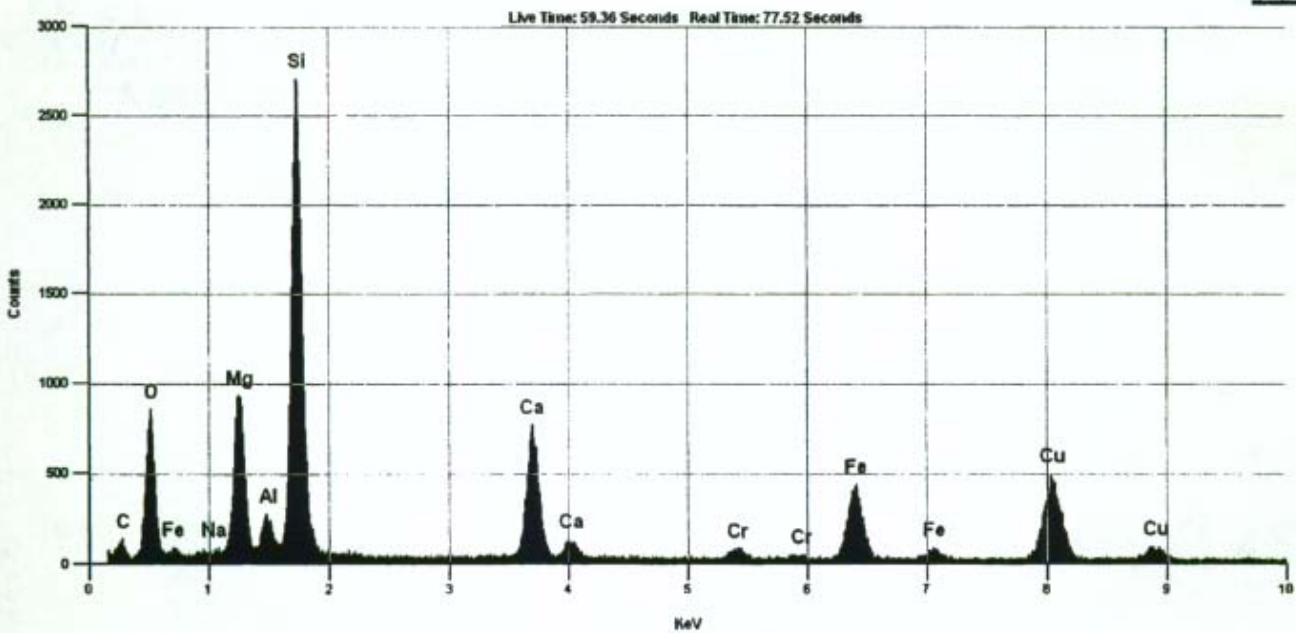
Quantitative Analysis Results - Standardless Analysis :
 041191-05-SP1211 Tue, Apr 05 2005
 EDS Parameters - 100KV, Takeoff Angle: 35.0°, Fit Index: 44.35
 Correction: CLIFF LORIMER, Cycles: 1

Element	Atoms%	Compound	Weight%	Error(±)	Norm%
Mg	16.80	MgO	33.75	6.03	33.75
Si	22.13	SiO2	66.25	9.45	66.25
<Total>	100.00		100.00		100.00

ACTINOLITE
 [2 1 0] Zone Axis
 041191-05, Neg#J1578



WINEDS



Title: 041191-05-SP1212 Time: 2:35:29 PM Date: Tue, Apr 05 2005 Accelerating Voltage: 100 KV Take Off Angle: 35 Degrees

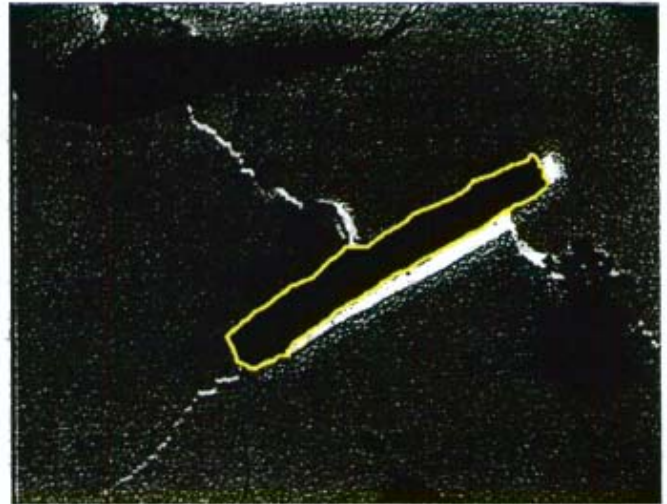
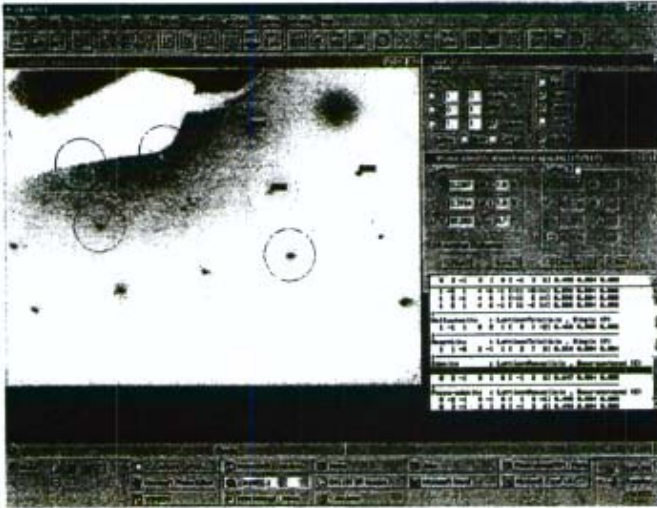
Quantitative Analysis Results - Standardless Analysis :
 041191-05-SP1212 Tue, Apr 05 2005
 EDS Parameters - 100KV, Takeoff Angle: 35.0°, Fit Index: 172.29
 Correction: CLIFF LORIMER, Cycles: 1

Element	Atoms%	Compound	Weight%	Error(±)	Norm%
Na	0.16	Na2O	0.22	0.16	0.22
Mg	8.02	MgO	14.80	0.33	14.80
Al	0.73	Al2O3	1.71	0.15	1.71
Si	21.14	SiO2	58.17	0.83	58.17
Ca	5.40	CaO	13.87	0.43	13.87
Fe	3.07	Fe2O3	11.23	0.58	11.23
<Total>	100.00		100.00		100.00

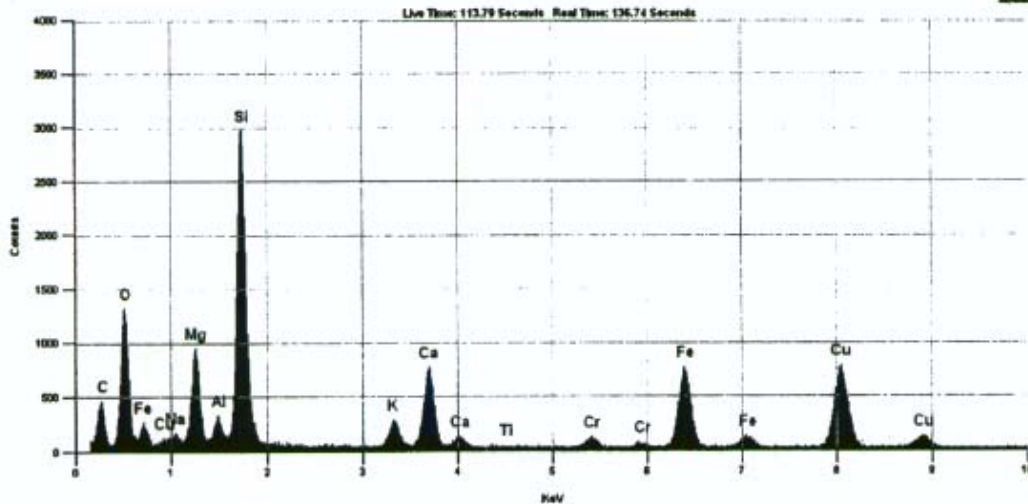
Lab/Cor, Inc.

A Professional Service Corporation in the Northwest

EDENITE - Zone Axis [1 3 -6]
 Neg# J1579 Job# 041191-05
 JEOL 1200EX - Gatan Image



WINEDS



Title: 041191-04 SP 1213 Thru: 4:12:15 PM Date: Tue, Apr 05 2005 Accelerating Voltage: 100 kV Take Off Angle: 35 Degrees

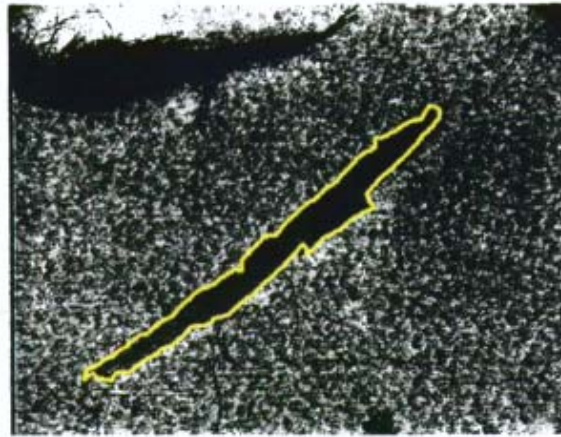
Quantitative Analysis Results - Standardless Analysis :
 041191-04 SP 1213 Tue, Apr 05 2005
 EDS Parameters - 100KV, Takeoff Angle: 35.0°, Fit Index: 171.57
 Correction: CLIFF LORIMER, Cycles: 1

Element	Atoms%	Compound	Weight%	Error(±)	Norm%
Na	0.79	Na2O	1.09	0.17	1.09
Mg	6.41	MgO	11.51	0.28	11.51
Al	0.66	Al2O3	1.51	0.13	1.51
Si	20.40	SiO2	54.61	0.72	54.61
K	1.23	K2O	2.59	0.17	2.59
Ca	4.54	CaO	11.35	0.36	11.35
Fe	4.88	Fe2O3	17.34	0.62	17.34
<Total>	100.00		100.00		100.00

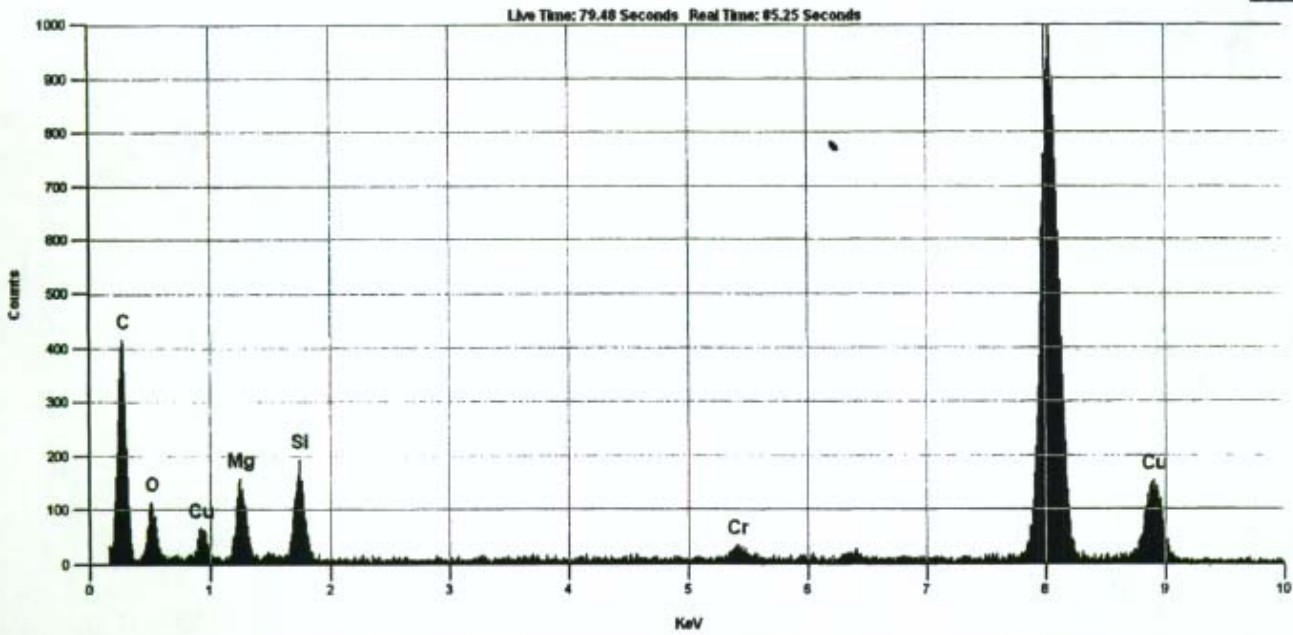
CHRYSOTILE

041191-06, Neg#J1581

Diffraction Image Unavailable



WINEDS



Title: 041191-06-SP1215 Time: 2:55:06 PM Date: Wed, Apr 06 2005 Accelerating Voltage: 100 KV Take Off Angle: 35 Degrees

Quantitative Analysis Results - Standardless Analysis :

041191-06-SP1215 Wed, Apr 06 2005

EDS Parameters - 100KV, Takeoff Angle: 35.0°, Fit Index: 154.79

Correction: CLIFF LORIMBER, Cycles: 1

Element	Atoms%	Compound	Weight%	Error(±)	Norm%
Mg	18.49	MgO	36.40	2.01	36.40
Si	19.89	SiO2	58.38	3.36	58.38
Fe	1.34	Fe2O3	5.21	2.28	5.21
<Total>	100.00		100.00		100.00

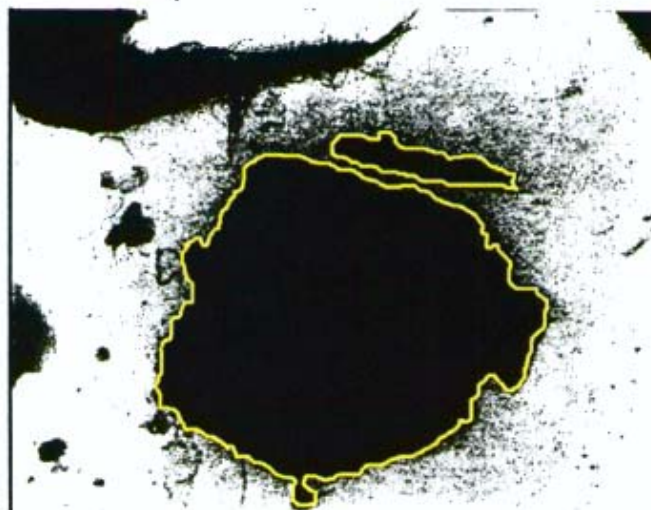
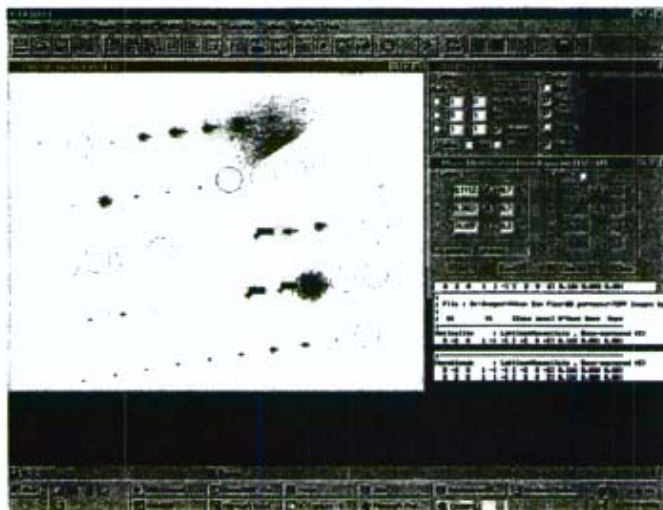
Lab/Cor, Inc.

A Professional Service Corporation in the Northwest

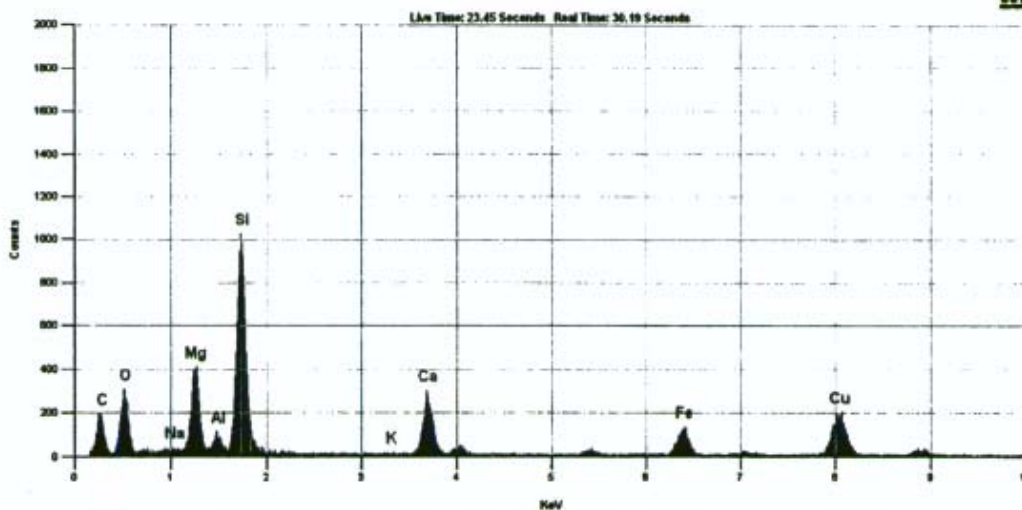
ACTINOLITE - Zone Axis [1 0 1]

Neg# J1582 Job# 041191-06

JEOL 1200EX - Gatan Image



WINEDS



File: 041191-06 SP 1216 Time: 3:39:58 PM Date: Wed, Apr 06 2005 Accelerating Voltage: 100 KV Take Off Angle: 35 Degree

Quantitative Analysis Results - Standardless Analysis :

041191-06 SP 1216 Wed, Apr 06 2005

EDS Parameters - 100KV, Takeoff Angle: 35.0°, Fit Index: 133.36

Correction: CLIFF LORIMER, Cycles: 1

Element	Atoms%	Compound	Weight%	Error (±)	Norm%
Na	0.32	Na2O	0.46	0.29	0.46
Mg	9.04	MgO	16.86	0.59	16.86
Al	0.75	Al2O3	1.76	0.24	1.76
Si	21.05	SiO2	58.53	1.39	58.53
Ca	5.16	CaO	13.40	0.70	13.40
Fe	2.43	Fe2O3	8.98	0.84	8.98
<Total>	100.00		100.00		100.00

Lab/Cor, Inc.

A Professional Service Corporation in the Northwest

ACTINOLITE

Neg#[273]; [Job#041191-24]

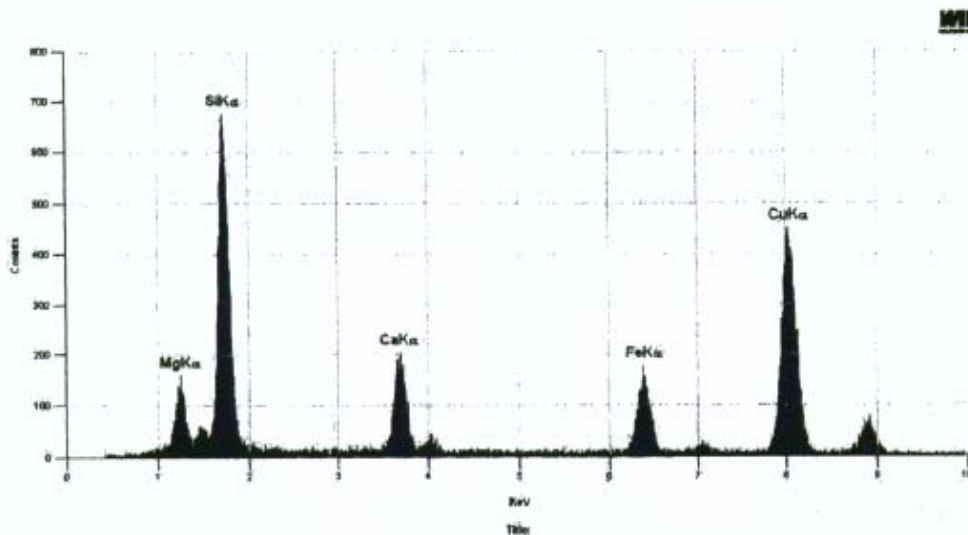
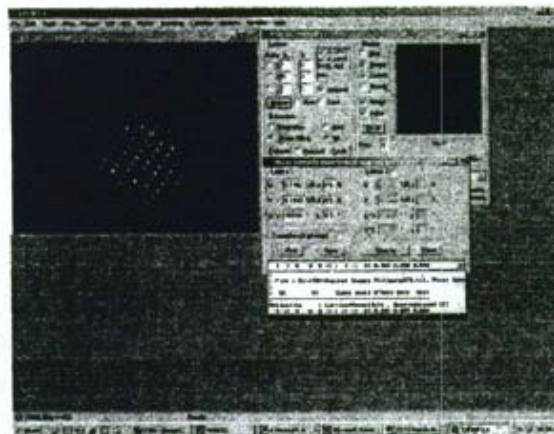
[4/7/05] iTEM Image

Zone Axis [1 -1 0]



5650 : 1

2µm



Quantitative Analysis Results - Standardless Analysis :

041191-24 EDS#15984 Thu, Apr 07 2005

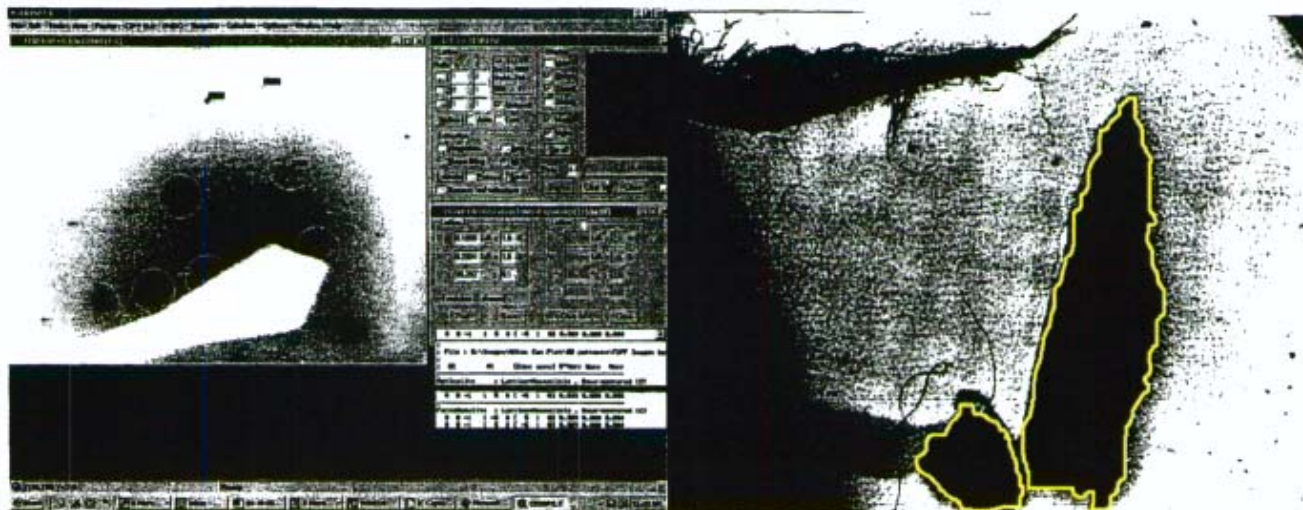
EDS Parameters - 100KV, Takeoff Angle: 38.0°, Fit Index: 7.25

Element	Atoms%	Compound	Weight%	Error(±)	Norm%
Mg	7.81	MgO	14.40	1.28	14.40
Si	22.21	SiO2	61.08	2.36	61.08
Ca	4.04	CaO	10.38	0.87	10.38
Fe	3.87	Fe2O3	14.14	1.46	14.14
<Total>	100.00		100.00		100.00

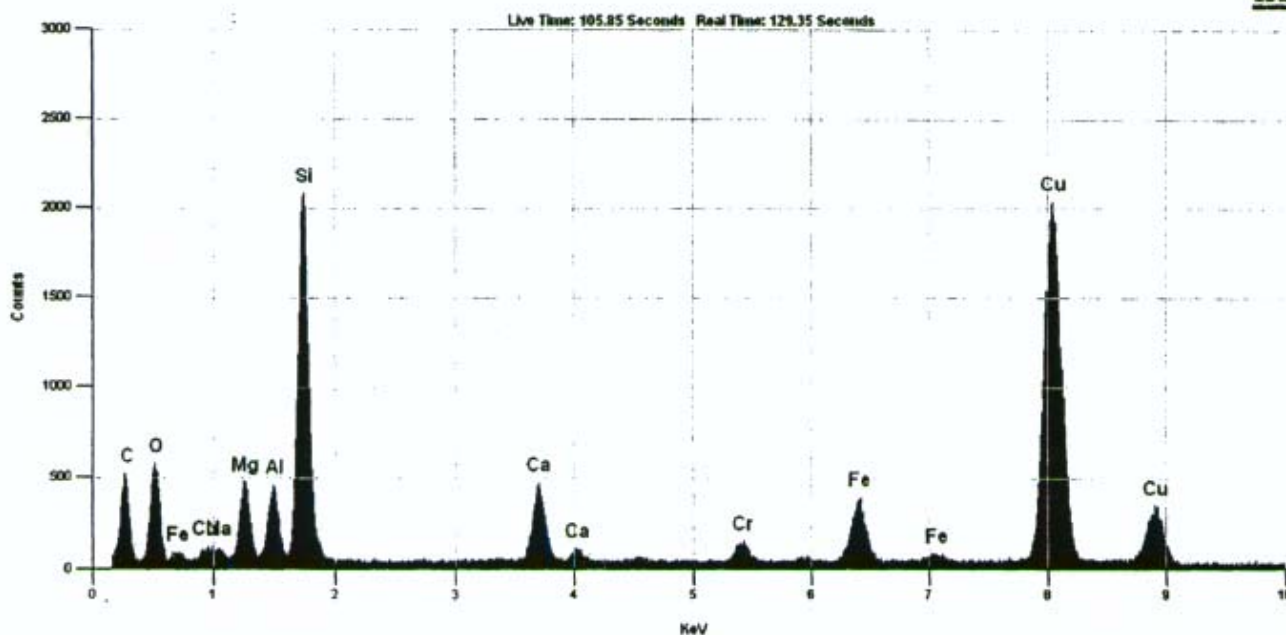
7619 6th Avenue NW, Seattle, WA 98117

www.labcor.net Phone: (206) 781-0155 (Office) Fax: (206) 789-8424 E-mail: mail@labcor.net

ACTINOLITE
 [5 1 0] Zone Axis
 041191-26, Neg#J1584



WINEDS

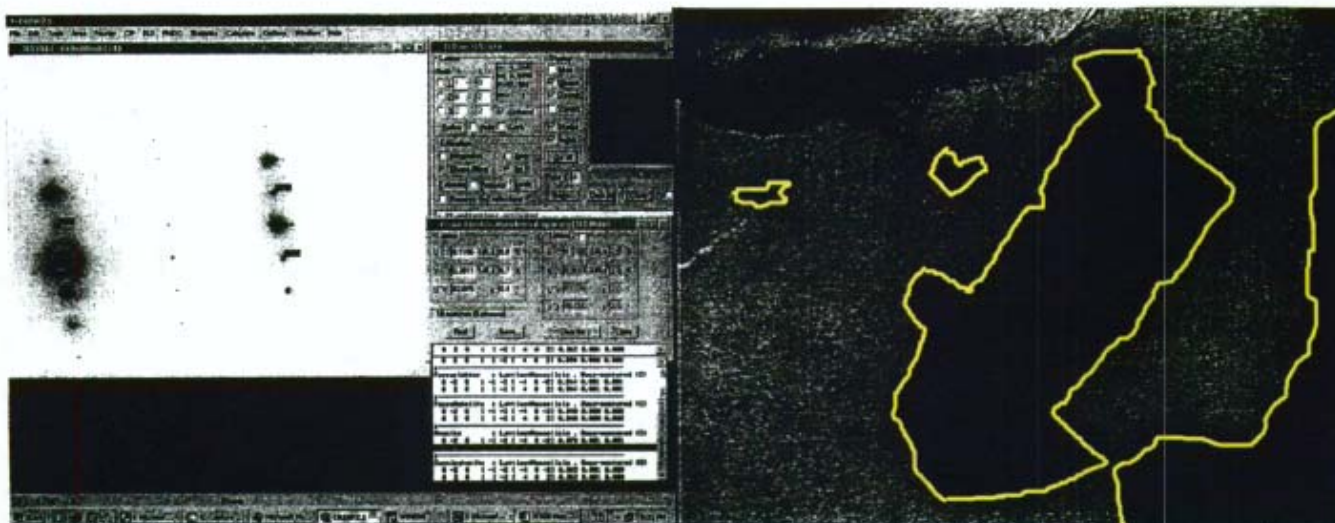


TITLE: 041191-26-SP1218 Time: 10:57:51 AM Date: Thu, Apr 07 2005 Accelerating Voltage: 100 KV Take Off Angle: 35 Degrees

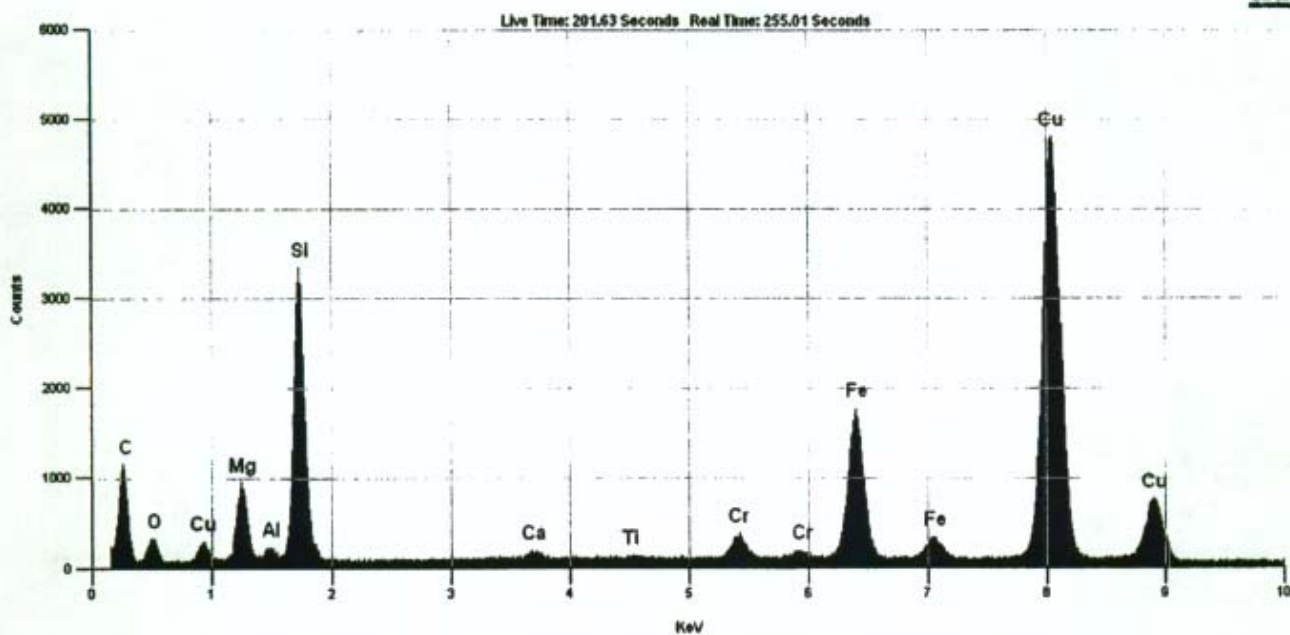
Quantitative Analysis Results - Standardless Analysis :
 041191-26-SP1218 Thu, Apr 07 2005
 EDS Parameters - 100KV, Takeoff Angle: 35.0°, Fit Index: 114.87
 Correction: CLIFF LORIMER, Cycles: 1

Element	Atoms%	Compound	Weight%	Error(±)	Norm%
Na	0.74	Na2O	1.06	0.24	1.06
Mg	5.09	MgO	9.44	0.35	9.44
Al	2.09	Al2O3	4.90	0.23	4.90
Si	22.24	SiO2	61.46	1.00	61.46
Ca	4.14	CaO	10.67	0.48	10.67
Fe	3.40	Fe2O3	12.47	0.75	12.47
<Total>	100.00		100.00		100.00

AMOSITE
[2 0 1]
041191-29, Neg#J1539



WINEDS

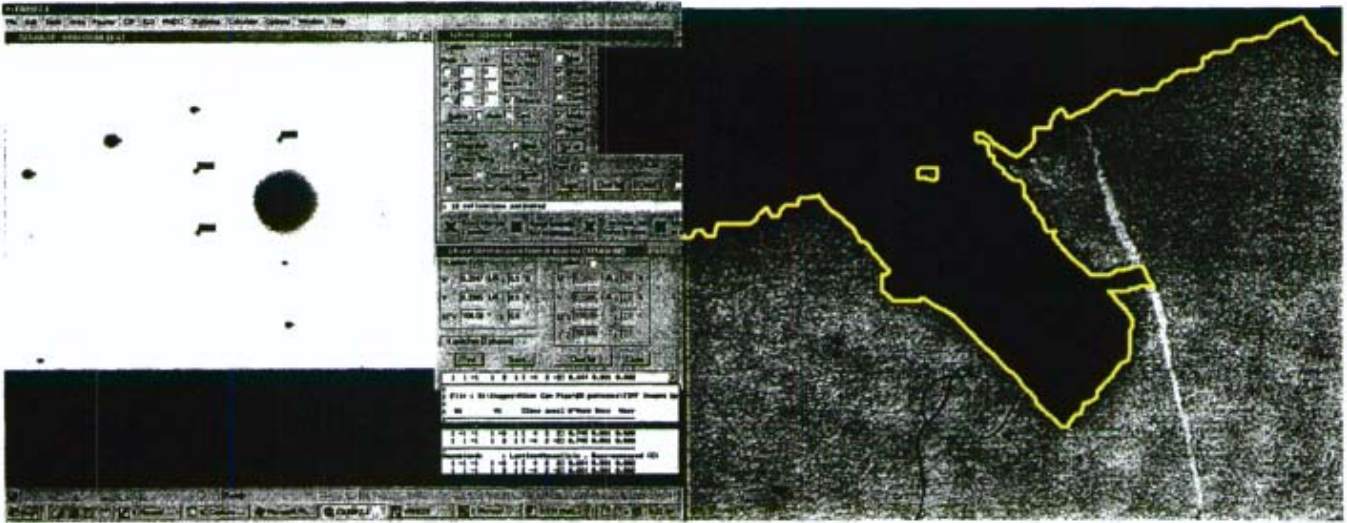


Title: 041191-29-SP1178 Time: 8:00:17 PM Date: Sat, Mar 19 2005 Accelerating Voltage: 100 KV Take Off Angle: 35 Degree

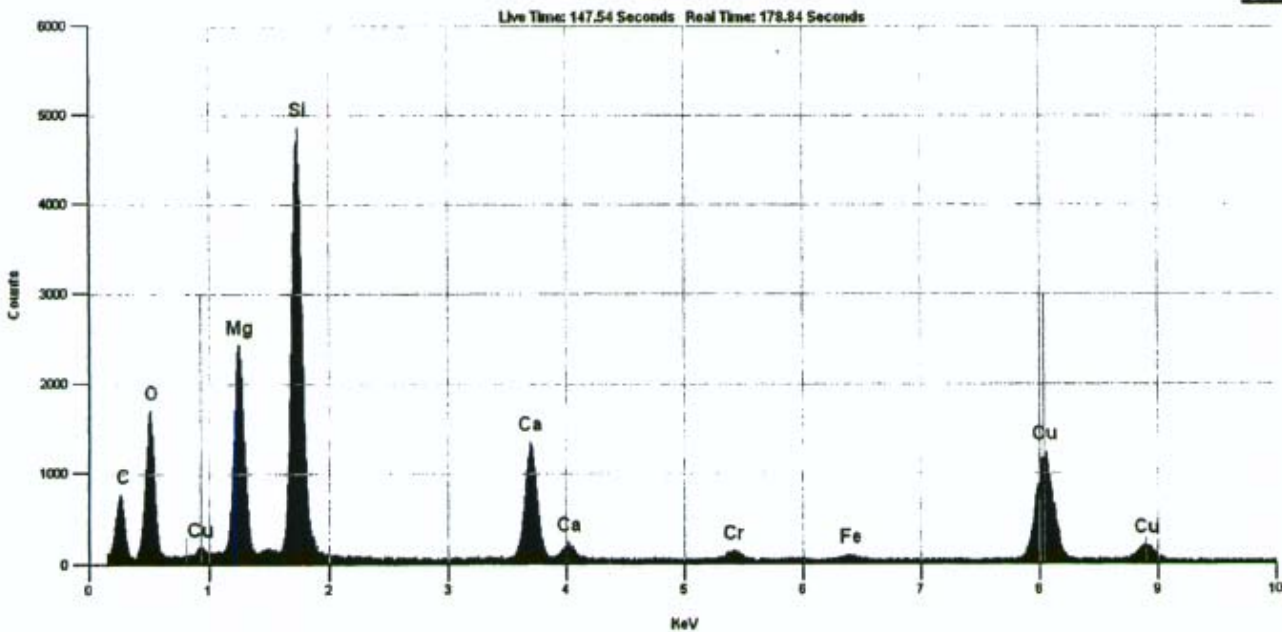
Quantitative Analysis Results - Standardless Analysis :
041191-29-SP1178 Sat, Mar 19 2005
EDS Parameters - 100KV, Takeoff Angle: 35.0°, Pit Index: 56.61
Correction: CLIFF LORIMER, Cycles: 1

Element	Atoms%	Compound	Weight%	Error(±)	Norm%
Mg	5.66	MgO	9.89	0.26	9.89
Al	0.31	Al2O3	0.69	0.10	0.69
Si	20.76	SiO2	54.14	0.68	54.14
Ca	0.44	CaO	1.06	0.20	1.06
Ti	0.12	TiO2	0.40	0.27	0.40
Fe	9.76	Fe2O3	33.80	0.83	33.80
<Total>	100.00		100.00		100.00

TREMOLITE
[2 1 1]
041191-29, Neg#J1540



WINEDS



Title: 041191-29-SP1179 Time: 8:54:58 PM Date: Sat, Mar 19 2005 Accelerating Voltage: 100 KV Take Off Angle: 35 Degrees

Quantitative Analysis Results - Standardless Analysis :
041191-29-SP1179 Sat, Mar 19 2005
EDS Parameters - 100KV, Takeoff Angle: 35.0°, Fit Index: 277.79
Correction: CLIFF LORIMER, Cycles: 1

Element	Atoms%	Compound	Weight%	Error(±)	Norm%
Mg	11.67	MgO	22.43	0.34	22.43
Si	21.85	SiO2	62.63	0.68	62.63
Ca	5.38	CaO	14.38	0.33	14.38
Fe	0.15	Fe2O3	0.55	0.18	0.55
<Total>	100.00		100.00		100.00

Lab/Cor, Inc.

A Professional Service Corporation in the Northwest

ACTINOLITE

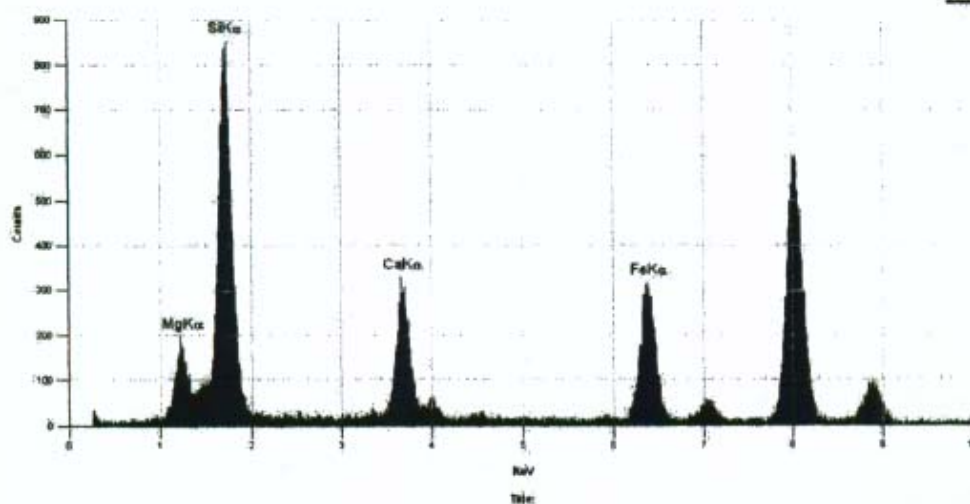
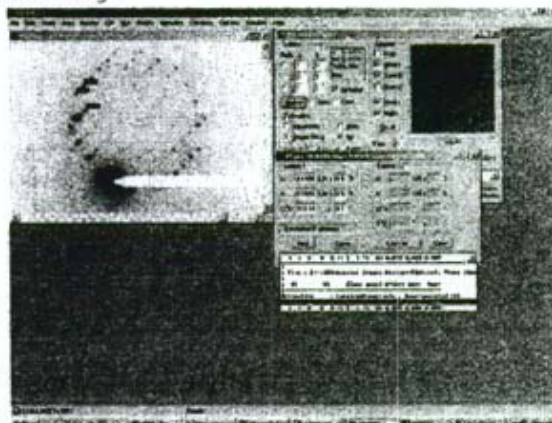
Neg#[229]; [Job#041191-33]

[03-24-05] iTEM Image



13900 : 1

1µm



WNEEDS

Quantitative Analysis Results - Standardless Analysis :
041191-33 EDS#15925 Thu, Mar 24 2005
EDS Parameters - 100KV, Takeoff Angle: 38.0°, Fit Index: 60.42

Element	Atoms%	Compound	Weight%	Error(±)	Norm%
Mg	6.58	MgO	11.73	0.85	11.73
Si	20.63	SiO ₂	54.78	1.45	54.78
Ca	5.01	CaO	12.42	0.54	12.42
Fe	5.97	Fe ₂ O ₃	21.07	0.94	21.07
<Total>	100.00		100.00		100.00

7619 6th Avenue NW, Seattle, WA 98117

www.labcor.net Phone: (206) 781-0155 (Office) Fax: (206) 789-8424 E-mail: mail@labcor.net

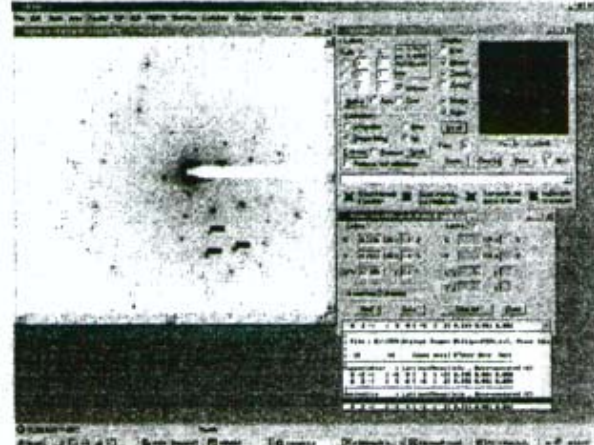
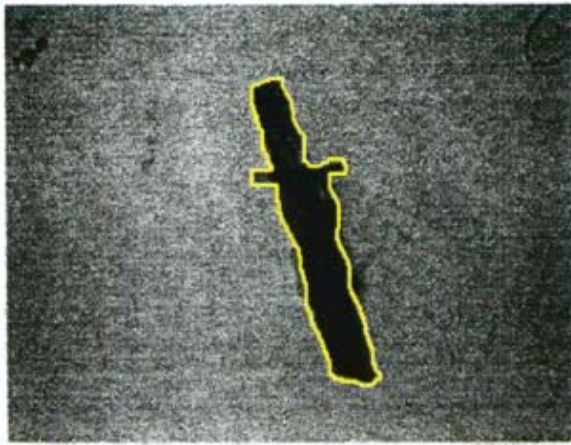
Lab/Cor, Inc.

A Professional Service Corporation in the Northwest

ACTINOLITE

Neg#P224; 041191-34

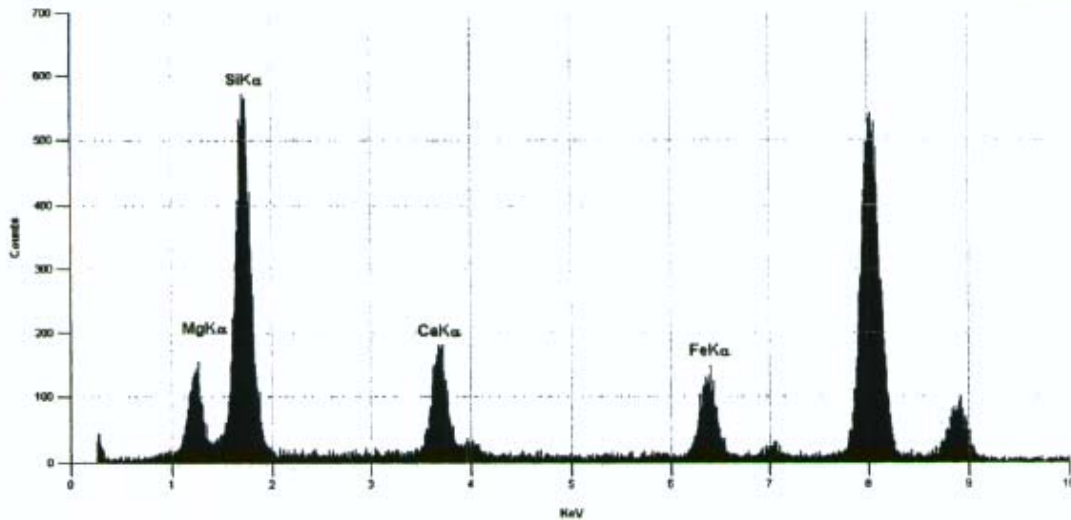
3/21/05 iTEM Image



19000 : 1

1µm

WINEDS



File: 041191-34 EDS#15920

Quantitative Analysis Results - Standardless Analysis :

041191-34 EDS#15920 Mon, Mar 21 2005

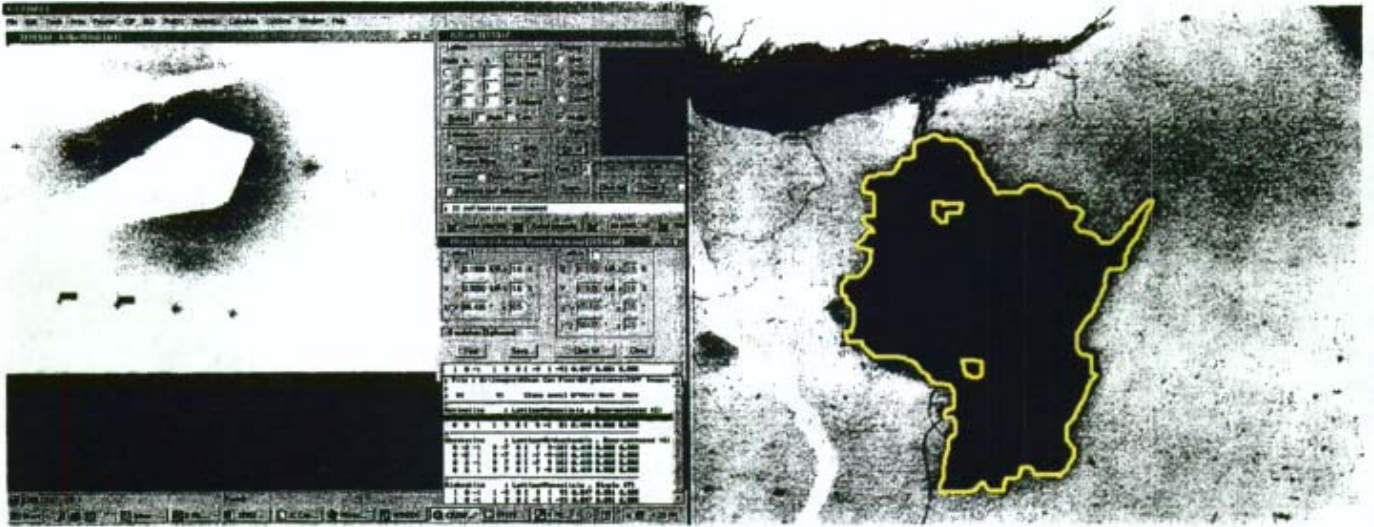
EDS Parameters - 100KV, Takeoff Angle: 38.0°, Fit Index: 96.90

Element	Atoms%	Compound	Weight%	Error(±)	Norm%
Mg	9.39	MgO	17.33	1.21	17.33
Si	21.11	SiO2	58.06	1.98	58.06
Ca	4.33	CaO	11.12	0.68	11.12
Fe	3.69	Fe2O3	13.50	1.02	13.50
<Total>	100.00		100.00		100.00

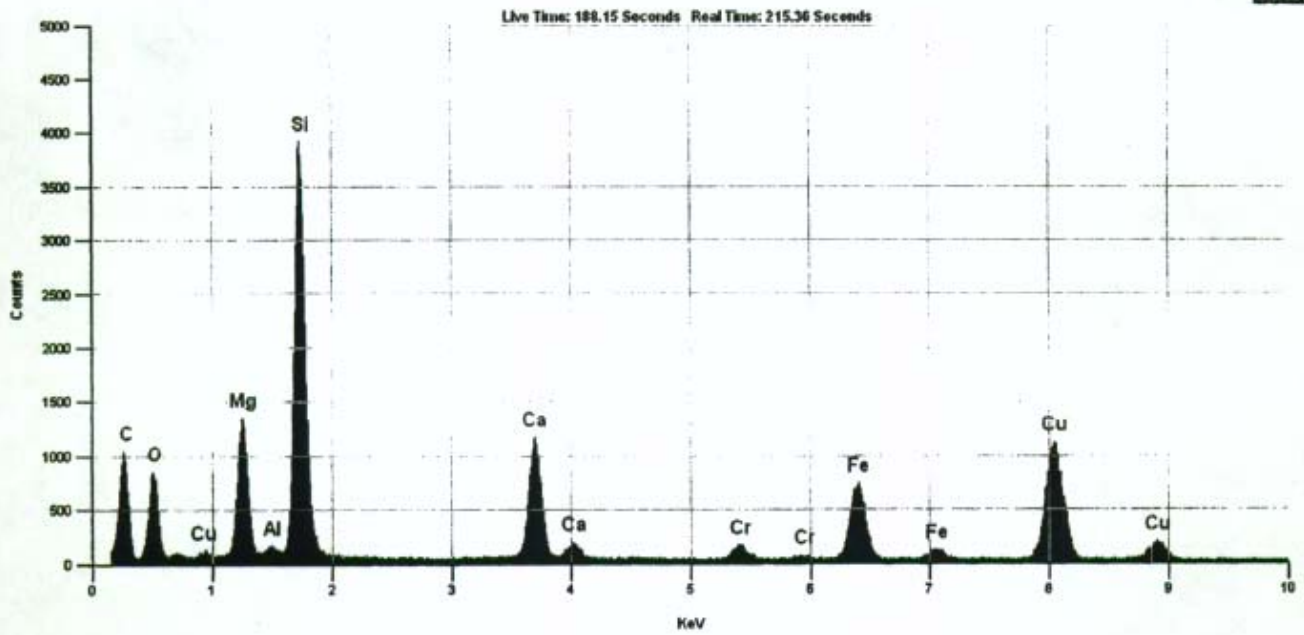
7619 6th Avenue NW, Seattle, WA 98117 www.labcor.net

Phone: (206) 781-0155 (Office) Fax: (206) 789-8424 (Fax) E-mail: mail@labcor.net

ACTINOLITE
[9 1 0]
041191-35, Neg#J1553



WINEDS



Title: 041191-35-SP1190 Time: 4:11:05 PM Date: Mon, Mar 21 2005 Accelerating Voltage: 100 KV Take Off Angle: 35 Degrees

Quantitative Analysis Results - Standardless Analysis :
041191-35-SP1190 Mon, Mar 21 2005
EDS Parameters - 100KV, Takeoff Angle: 35.0°, Fit Index: 183.73
Correction: CLIFF LORIMER, Cycles: 1

Element	Atoms%	Compound	Weight%	Error(±)	Norm%
Mg	7.36	MgO	13.41	0.27	13.41
Al	0.14	Al2O3	0.32	0.09	0.32
Si	21.23	SiO2	57.67	0.65	57.67
Ca	5.87	CaO	14.89	0.36	14.89
Fe	3.80	Fe2O3	13.70	0.49	13.70
<Total>	100.00		100.00		100.00

Lab/Cor, Inc.

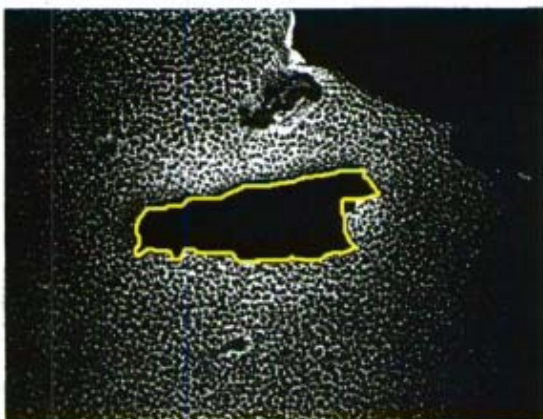
A Professional Service Corporation in the Northwest

ACTINOLITE

Neg# [P306]; [Job#041191-36]

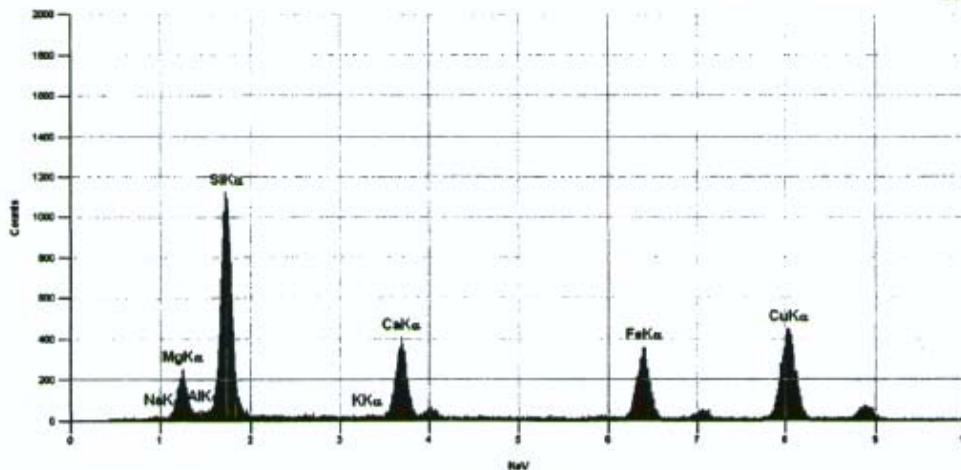
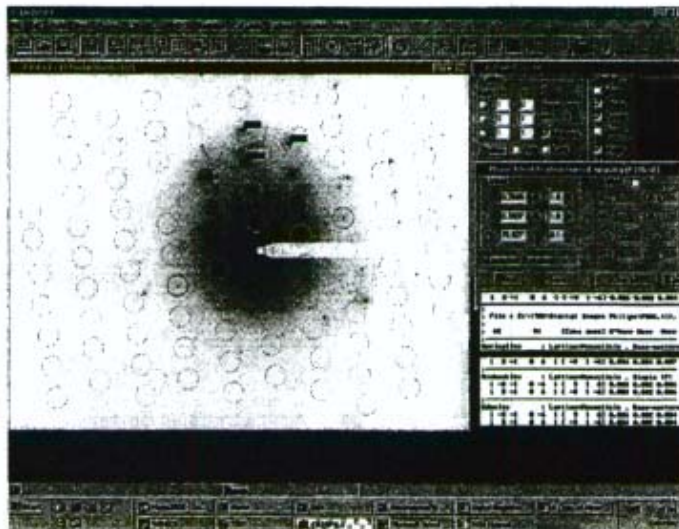
[4/9/05] iTEM Image

Zone Axis [9 1 6]



13900 : 1

1µm



TIN: 041191-36 SP 16019

Quantitative Analysis Results - Standardless Analysis :

041191-36 SP 16019 Sat, Apr 09 2005

EDS Parameters - 100KV, Takeoff Angle: 38.0°, Pit Index: 8.91

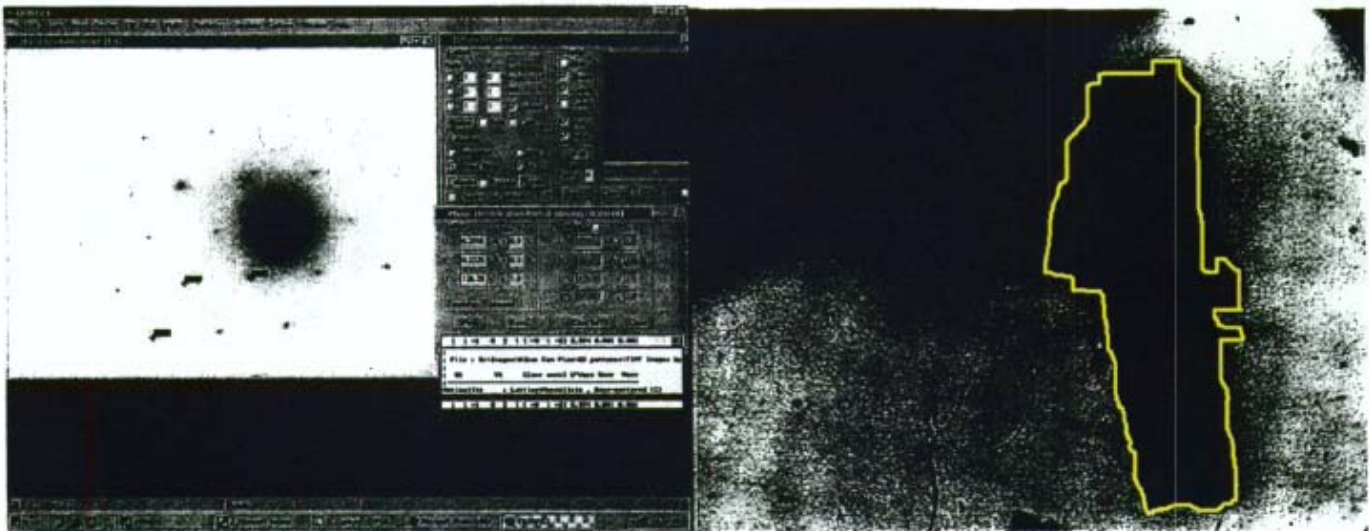
Correction: CLIFF LORIMER, Cycles: 1

Element	Atom%	Compound	Weight%	Error(±)	Norm%
Mg	7.39	MgO	13.39	0.79	13.39
Si	21.27	SiO2	57.47	1.56	57.47
Ca	4.65	CaO	11.74	0.66	11.74
Fe	4.85	Fe2O3	17.40	1.16	17.40
<Total>	100.00		100.00		100.00

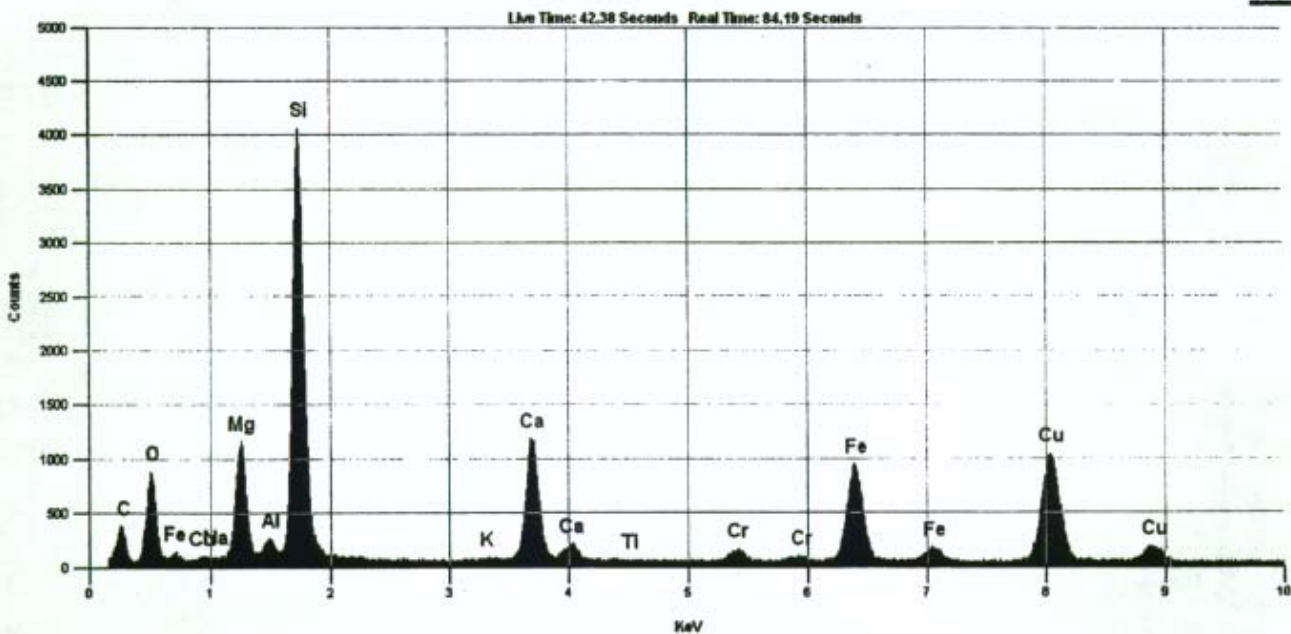
7619 6th Avenue NW, Seattle, WA 98117

www.labcor.net Phone: (206) 781-0155 (Office) Fax: (206) 789-8424 E-mail: mail@labcor.net

ACTINOLITE
 [3 1 0] Zone Axis
 041191-37, Neg#J1594



WINEDS



Title: 041191-37-SP1224 Time: 4:40:05 PM Date: Sat, Apr 09 2005 Accelerating Voltage: 100 KV Take Off Angle: 35 Degrees

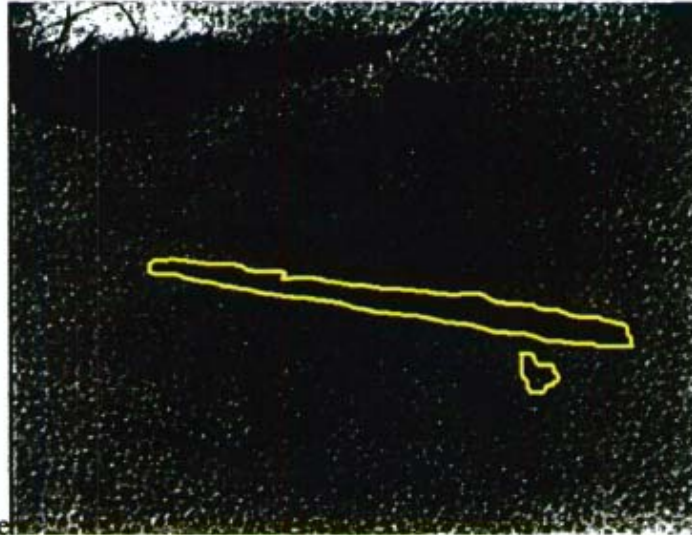
Quantitative Analysis Results - Standardless Analysis :
 041191-37-SP1224 Sat, Apr 09 2005
 EDS Parameters - 100KV, Takeoff Angle: 35.0°, Fit Index: 89.99
 Correction: CLIFF LORIMER, Cycles: 1

Element	Atoms%	Compound	Weight%	Error(±)	Norm%
Mg	6.24	MgO	11.27	0.24	11.27
Al	0.35	Al2O3	0.80	0.10	0.80
Si	21.28	SiO2	57.28	0.66	57.28
Ca	5.66	CaO	14.21	0.36	14.21
Fe	4.60	Fe2O3	16.44	0.56	16.44
<Total>	100.00		100.00		100.00

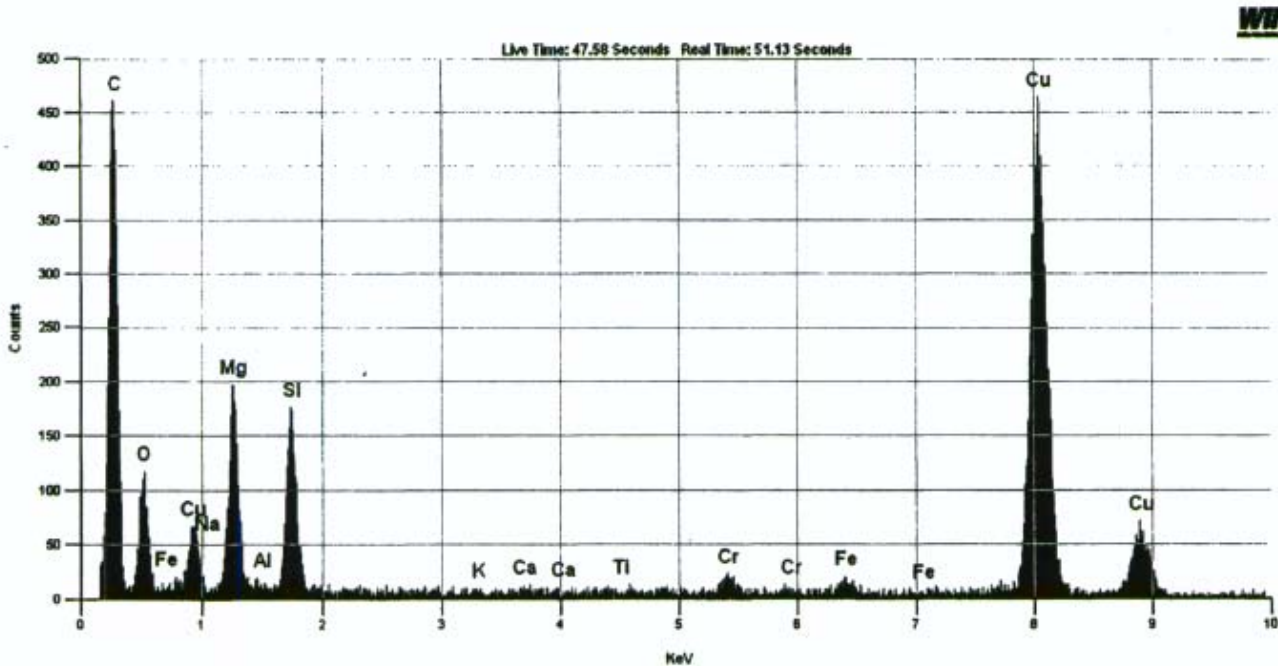
Lab/Cor, Inc.

A Professional Service Corporation in the Northwest

CHRYSOTILE
041191-37, Neg#J1596



No Diffraction Image Available



Title: 041191-37-SP1225 Time: 7:31:02 PM Date: Sat, Apr 09 2005 Accelerating Voltage: 100 KV Take Off Angle: 35 Degrees

Quantitative Analysis Results - Standardless Analysis :

041191-37-SP1225 Sat, Apr 09 2005

EDS Parameters - 100KV, Takeoff Angle: 35.0°, Fit Index: 280.05

Correction: CLIFF LORIMER, Cycles: 1

Element	Atom%	Compound	Weight%	Error(±)	Norm%
Mg	21.25	MgO	42.06	2.17	42.06
Si	18.39	SiO2	54.26	3.25	54.26
Fe	0.94	Fe2O3	3.68	1.95	3.68
<Total>	100.00		100.00		100.00

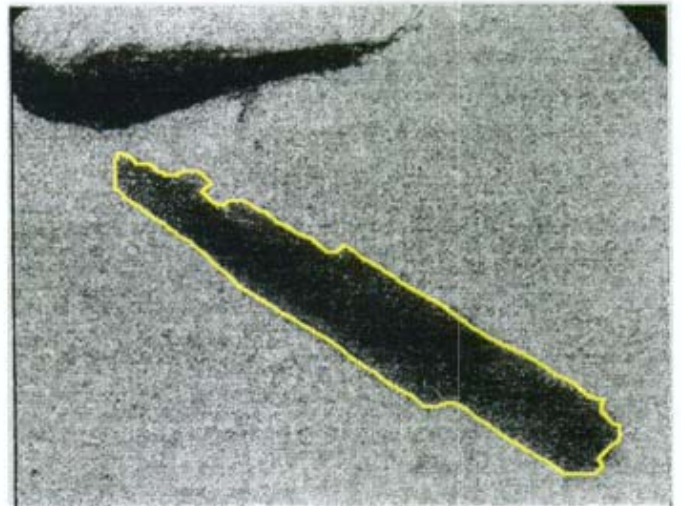
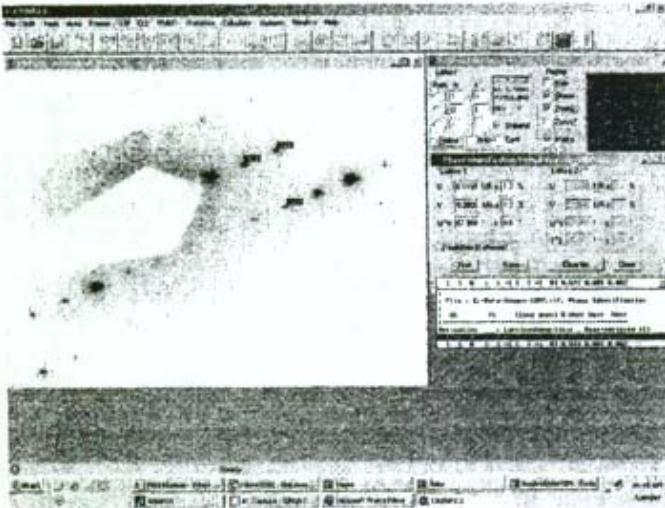
Lab/Cor, Inc.

A Professional Service Corporation in the Northwest

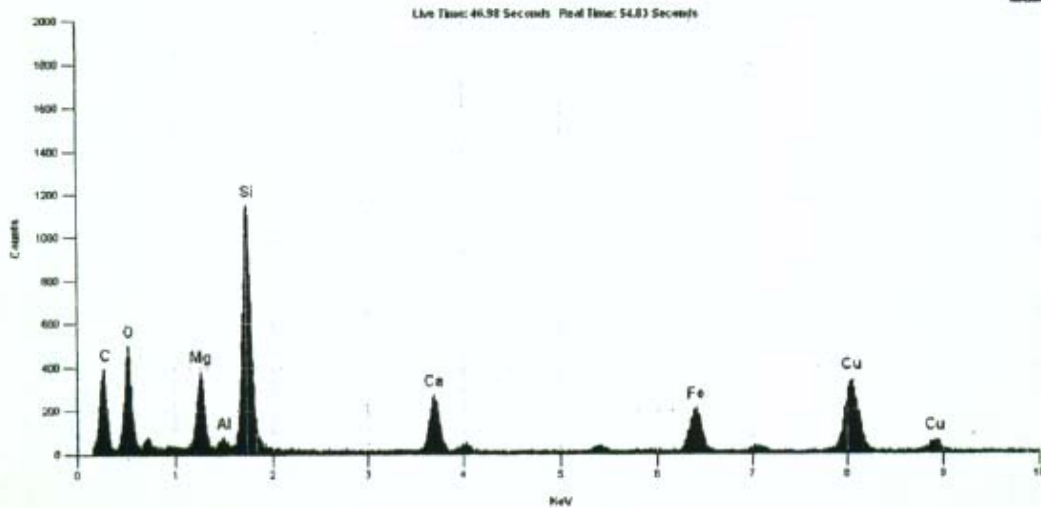
ACTINOLITE - Zone Axis [1 1 0]

Neg# J1597 Job# 041191-40

JEOL 1200EX - Gatan Image



WINEDS



Title: 041191-40 SP 1227 Time: 9:13:01 AM Date: Tue, Apr 12 2005 Accelerating Voltage: 100 KV Take Off Angle: 35 Degree

Quantitative Analysis Results - Standardless Analysis :

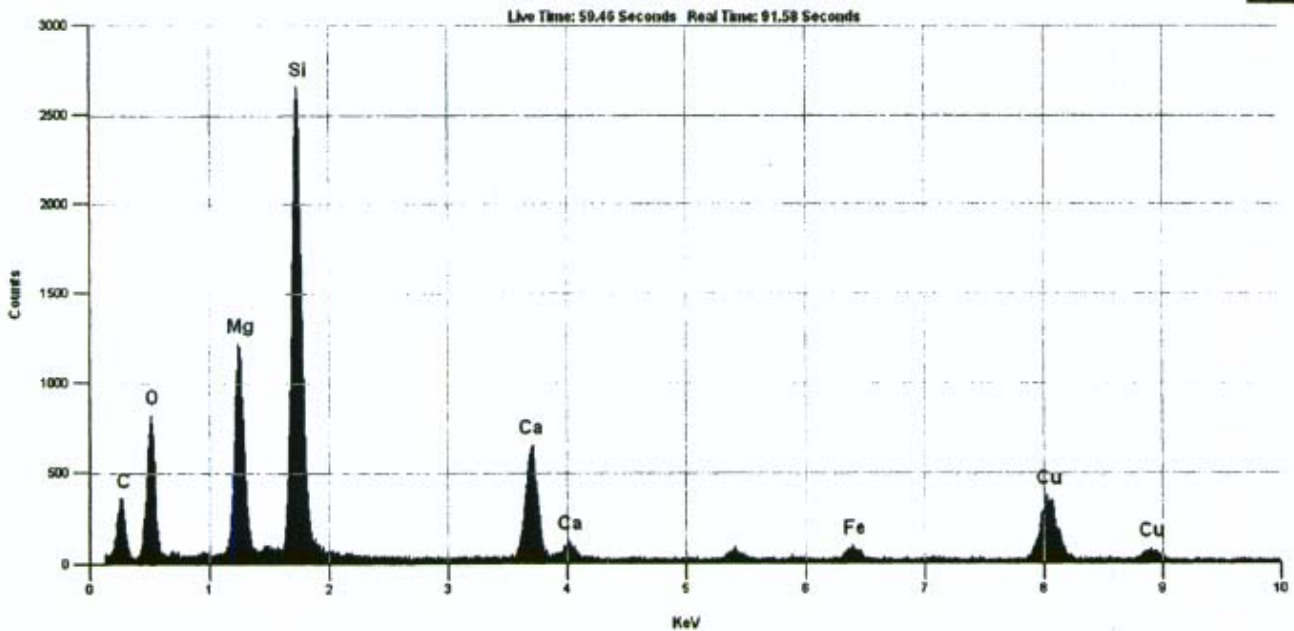
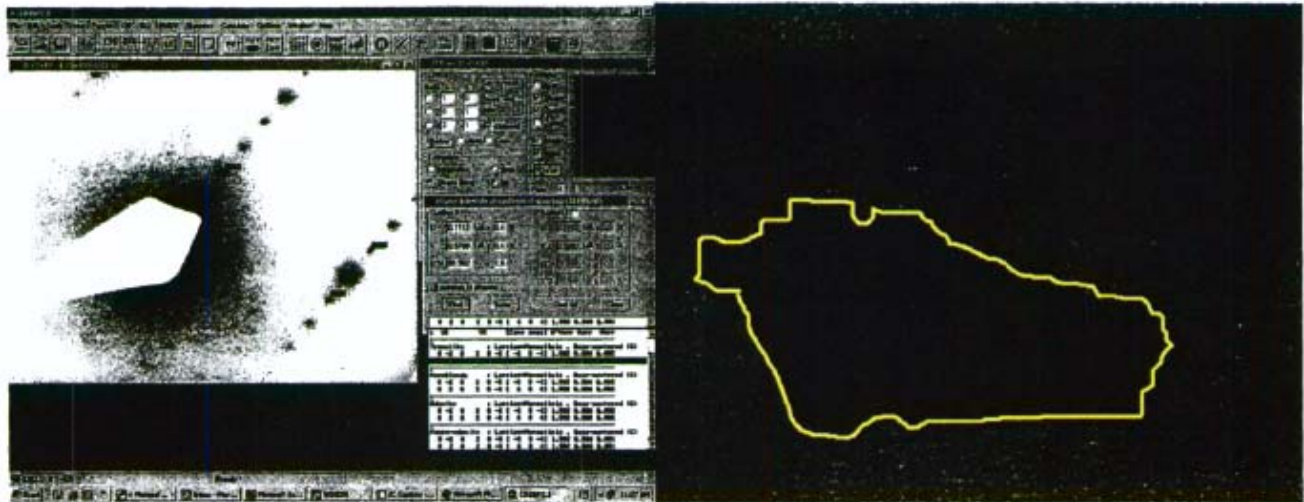
041191-40 SP 1227 Tue, Apr 12 2005

EDS Parameters - 100KV, Takeoff Angle: 35.0°, Fit Index: 216.94

Correction: CLIFF LORIMER, Cycles: 1

Element	Atoms%	Compound	Weight%	Error(±)	Norm%
Mg	7.54	MgO	13.86	0.52	13.86
Al	0.25	Al ₂ O ₃	0.58	0.19	0.58
Si	21.90	SiO ₂	60.04	1.27	60.04
Ca	4.54	CaO	11.62	0.60	11.62
Fe	3.81	Fe ₂ O ₃	13.89	0.95	13.89
<Total>	100.00		100.00		100.00

TREMOLITE
[3 0 2]
041191-49, Neg#J1495

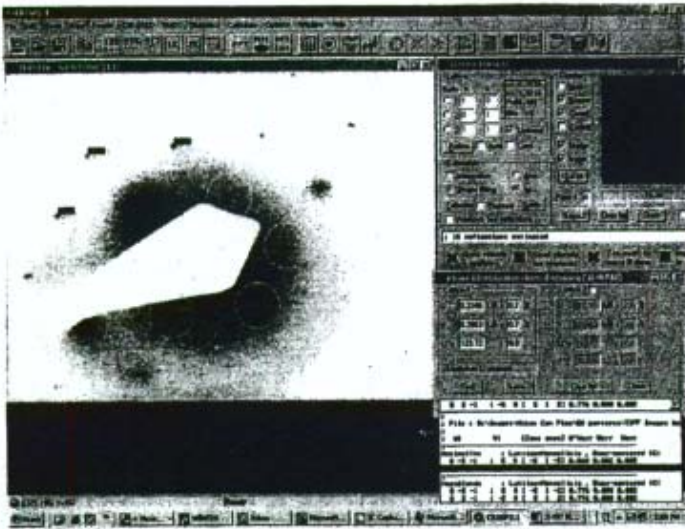


TR0: 041191-49- SP1138 Time: 10:59:04 AM Date: Thu, Mar 10 2005 Accelerating Voltage: 100 KV Take Off Angle: 35 Degrees

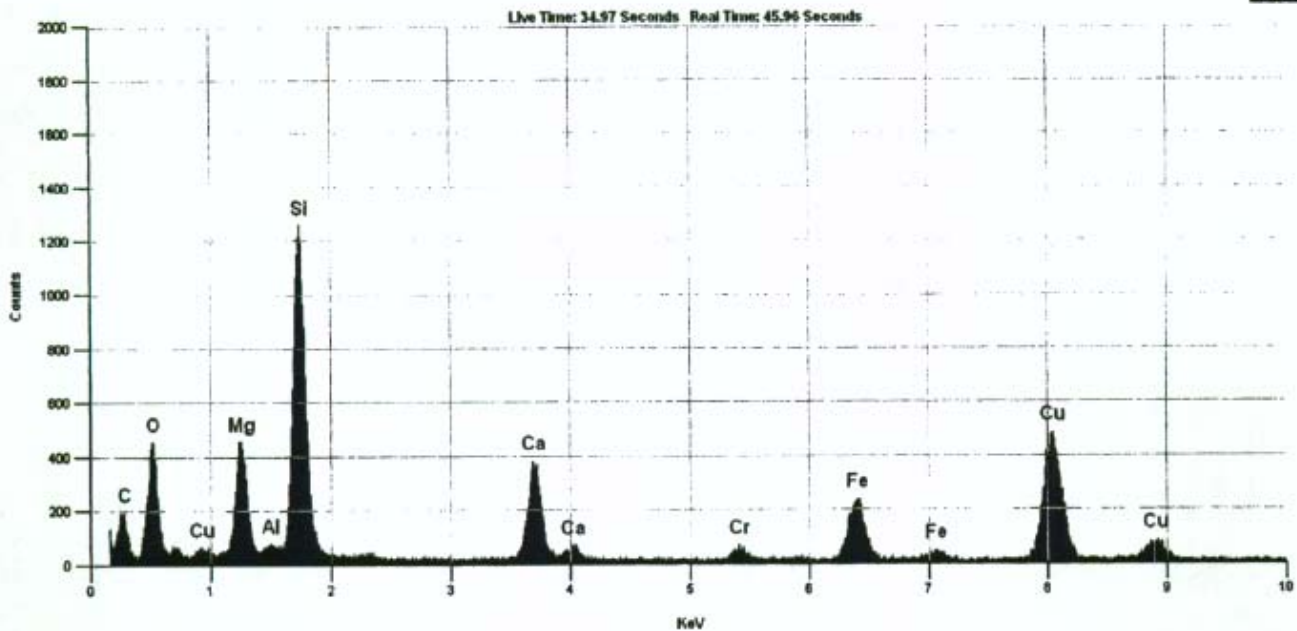
Quantitative Analysis Results - Standardless Analysis :
041191-49- SP1138 Thu, Mar 10 2005
EDS Parameters - 100KV, Takeoff Angle: 35.0°, Fit Index: 157.79
Correction: CLIFF LORIMER, Cycles: 1

Element	Atoms%	Compound	Weight%	Error(±)	Norm%
Mg	10.94	MgO	21.01	0.44	21.01
Si	22.37	SiO2	64.03	0.92	64.03
Ca	4.81	CaO	12.85	0.45	12.85
Fe	0.56	Fe2O3	2.11	0.31	2.11
<Total>	100.00		100.00		100.00

ACTINOLITE
[5 1 2]
041191-51, Neg#J1497



WINEDS



Title: 041191-51-SP1140 Time: 1:41:18 PM Date: Fri, Mar 11 2005 Accelerating Voltage: 100 KV Take Off Angle: 35 Degrees

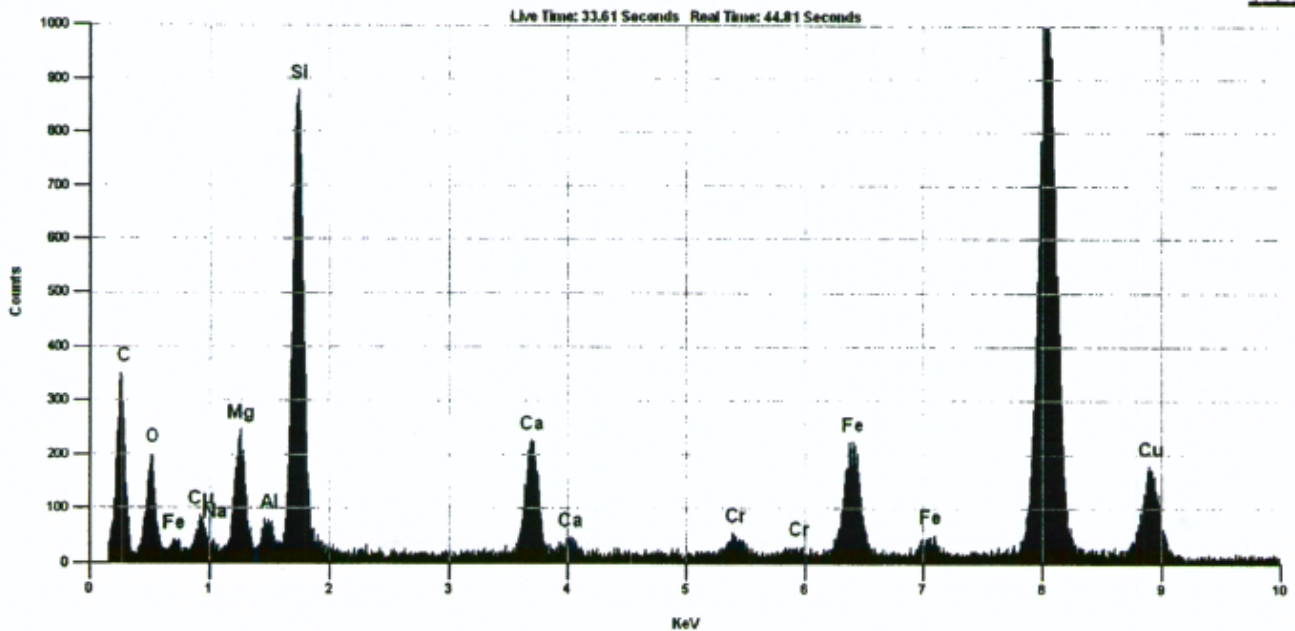
Quantitative Analysis Results - Standardless Analysis :
041191-51-SP1140 Fri, Mar 11 2005
EDS Parameters - 100KV, Takeoff Angle: 35.0°, Fit Index: 126.21
Correction: CLIFF LORIMER, Cycles: 1

Element	Atoms%	Compound	Weight%	Error(±)	Norm%
Mg	8.35	MgO	15.27	0.56	15.27
Al	0.16	Al2O3	0.38	0.20	0.38
Si	20.83	SiO2	56.80	1.31	56.80
Ca	5.73	CaO	14.59	0.70	14.59
Fe	3.58	Fe2O3	12.96	0.98	12.96
<Total>	100.00		100.00		100.00

ACTINOLITE
[411]
041191-112, Neg#J1519



WINEDS



Title: 041191-112-SP1163 Time: 11:47:09 AM Date: Thu, Mar 17 2005 Accelerating Voltage: 100 KV Take Off Angle: 35 Degrees

Quantitative Analysis Results - Standardless Analysis :
041191-112-SP1163 Thu, Mar 17 2005
EDS Parameters - 100KV, Takeoff Angle: 35.0°, Fit Index: 123.77
Correction: CLIPP LORIMER, Cycles: 1

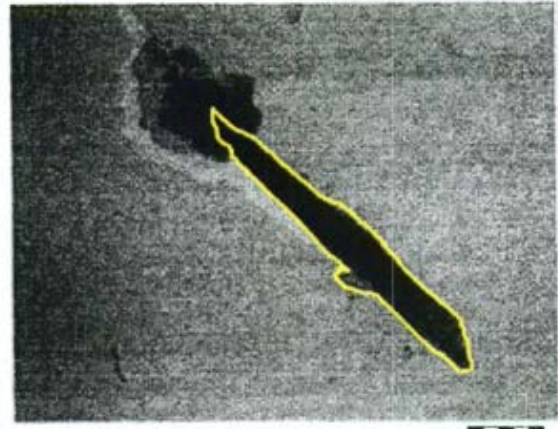
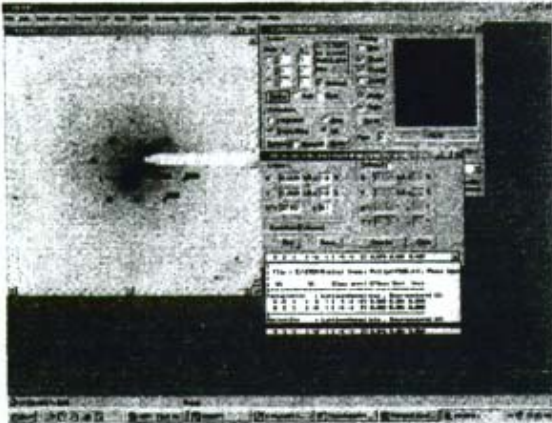
Element	Atoms%	Compound	Weight%	Error(±)	Norm%
Na	0.49	Na2O	0.68	0.34	0.68
Mg	5.61	MgO	10.17	0.50	10.17
Al	0.62	Al2O3	1.43	0.23	1.43
Si	21.65	SiO2	58.53	1.42	58.53
Ca	5.01	CaO	12.64	0.73	12.64
Fe	4.61	Fe2O3	16.56	1.22	16.56
<Total>	100.00		100.00		100.00

Lab/Cor, Inc.

A Professional Service Corporation in the Northwest

ACTINOLITE

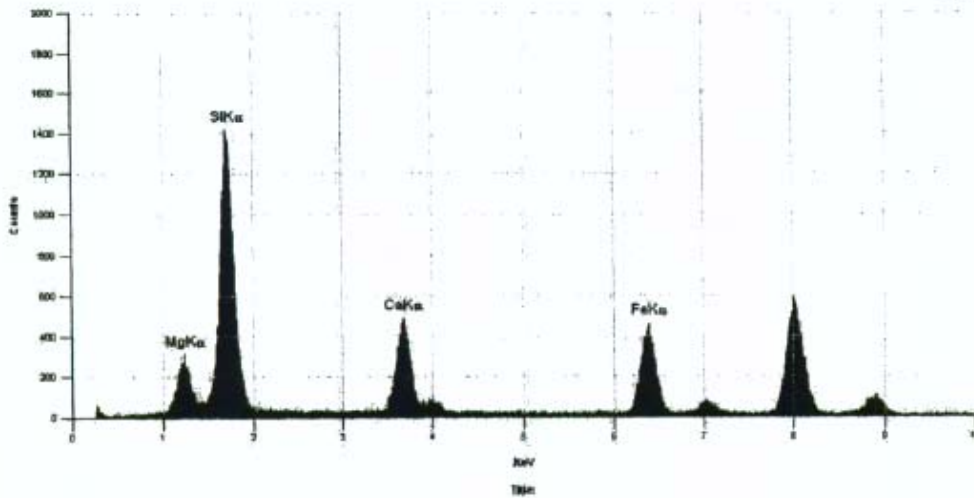
Neg# 225; Job# 141191-34
3-22-05 iTEM Image



5650 : 1

2µm

WINEDS



Quantitative Analysis Results - Standardless Analysis :
041191-34; EDS#15921 Tue, Mar 22 2005
EDS Parameters - 100KV, Takeoff Angle: 38.0°, Fit Index: 109.99

Element	Atoms%	Compound	Weight%	Error(±)	Norm%
Mg	7.12	MgO	12.83	0.72	12.83
Si	21.01	SiO2	56.42	1.26	56.42
Ca	4.88	CaO	12.23	0.45	12.23
Fe	5.19	Fe2O3	18.52	0.75	18.52
<Total>	100.00		100.00		100.00

7619 6th Avenue NW, Seattle, WA 98117

www.labcor.net Phone: (206) 781-0155 (Office) Fax: (206) 789-8424 E-mail: mail@labcor.net