



Figure 1a. Optical Image of Chrysotile Grade 3 (textile grade).

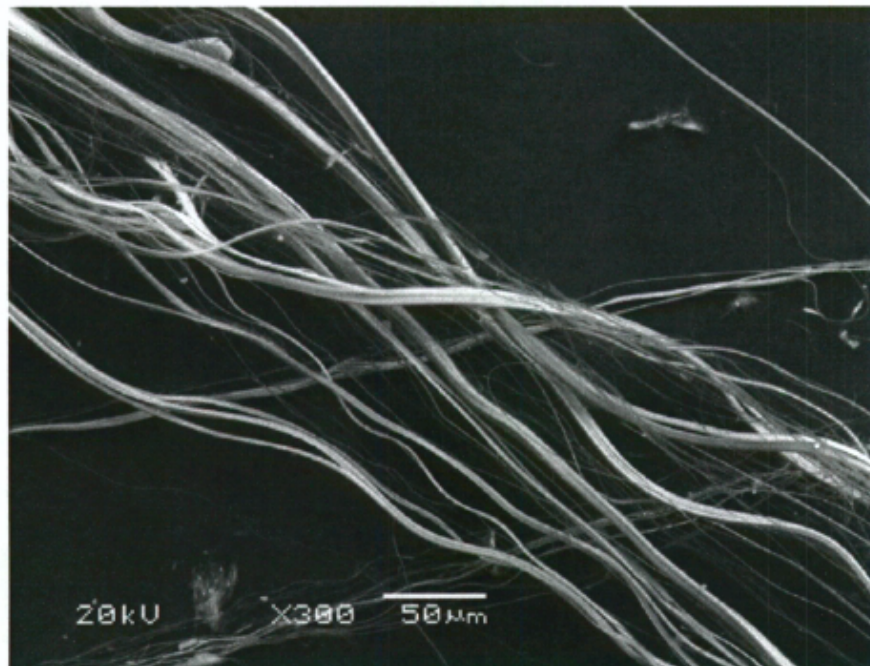


Figure 1b. SEM Image of Chrysotile Grade 3 (textile grade).



Figure 2a. Optical Image of Chrysotile Grade 4 (insulation/cement pipe grade).

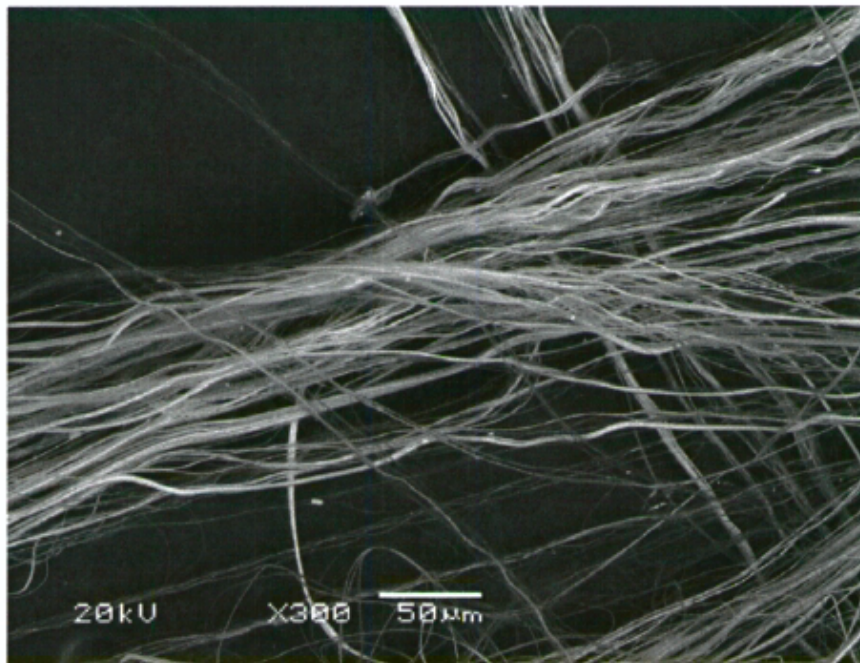


Figure 2b. SEM Image of Chrysotile Grade 4 (insulation/cement pipe grade).



Figure 3a. Optical Image of Chrysotile Grade 7 (friction parts grade).

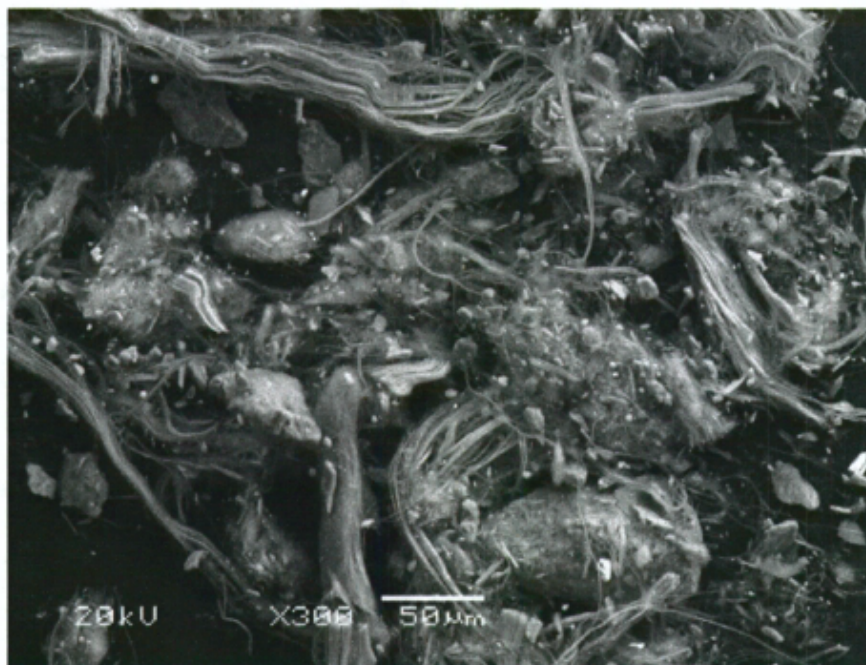


Figure 3b. SEM Image of Chrysotile Grade 7 (friction parts grade).

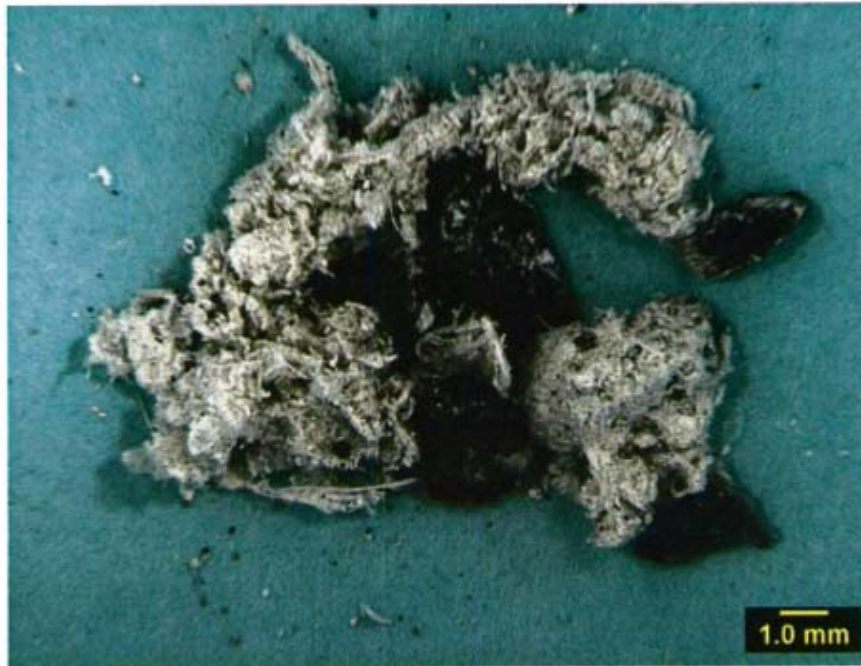


Figure 4a. Optical Image of Chrysotile Ore (Quebec chrysotile miner exposure).



Figure 4b. SEM Image of Chrysotile Ore (Quebec chrysotile miner exposure).

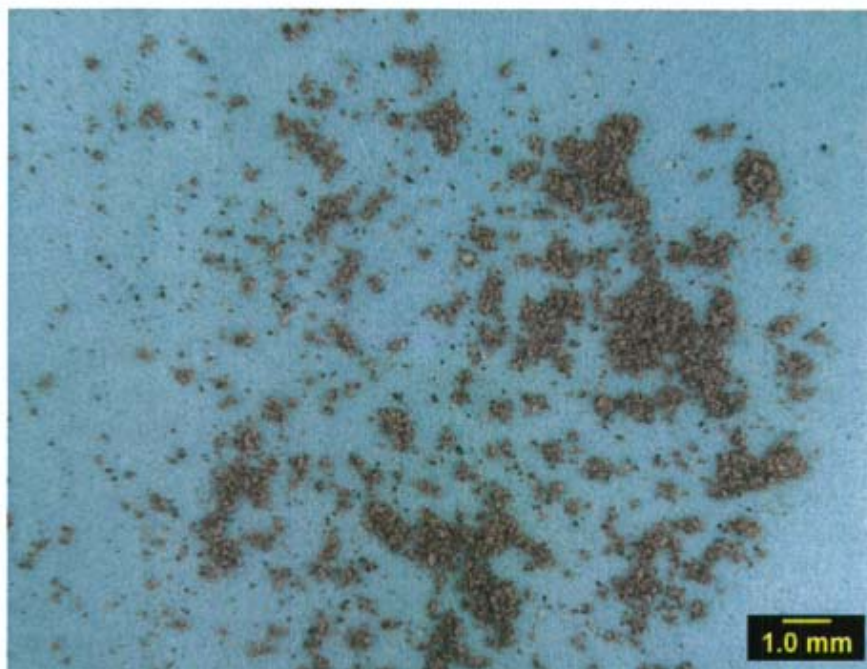


Figure 5a. Optical Image of Eldorado Hills EPA Soil Sample.

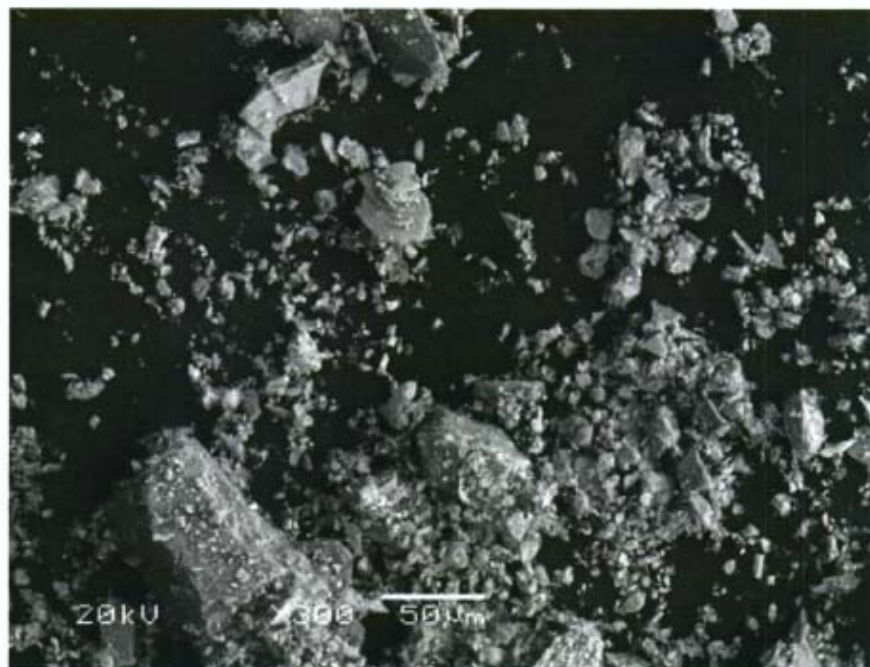


Figure 5b. SEM Image of Eldorado Hills EPA Soil Sample.