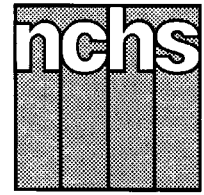


# Monthly Vital Statistics Report



Provisional Data From the CENTERS FOR DISEASE CONTROL AND PREVENTION/National Center for Health Statistics

## Births, Marriages, Divorces, and Deaths for 1996

### Births

According to provisional reports, an estimated 302,000 births occurred in the United States during December 1996. This was an increase of 1 percent from the provisional number of births reported for December 1995 (300,000). The birth rate, 13.4 live births per 1,000 population, was the same as the rate for December 1995. The fertility rate, 59.8 live births per 1,000 women aged 15–44 years, was 1 percent higher than the comparable rate for December 1995 (59.3). The seasonally adjusted fertility rate (62.1) was also 1 percent higher than the comparable rate for December 1995 (61.6).

An estimated 3,899,000 live births occurred in 1996, a slight rise from the 3,892,000 births reported for the previous year. The birth rate of 14.7 was 1 percent lower than the rate of 14.8 for 1995. The fertility rate for 1996 was 65.4, slightly lower than the rate for 1995 (65.5). These rates suggest that the generally downward trend in 12-month rates observed since early 1991 continued in 1996 but at a slower pace.

The birth and fertility rates—which increased dramatically in the 1940’s and 1950’s, declined rapidly in the 1960’s and early 1970’s, and increased again in the late 1980’s—have been declining in the 1990’s. The 1996 birth rate is the lowest

since 1976 (14.6), while the fertility rate is the lowest since 1986 (65.4).

Changes in the annual number of births are affected by two factors—changes in age-specific birth rates and changes in the number and age composition of women in the childbearing ages. According to estimates prepared by the U.S. Bureau of the Census (1), there was less than a 1-percent increase in the number of women in the childbearing ages (15–44 years) between 1995 and 1996. The slight decline in the fertility rate between 1995 and 1996 is consistent with the aging of the baby-boom women as they move into their forties. The 1996 estimated total fertility rate was 2,033. This indicates

### Provisional Vital Statistics for the United States

[Rates for infant deaths are deaths under 1 year per 1,000 live births; fertility rates are live births per 1,000 women aged 15–44 years; all other rates are per 1,000 total population. Data are subject to monthly reporting variation; see [Technical notes](#)]

Item	December				January–December				
	Number		Rate		Number		Rate		
	1996	1995	1996	1995	1996	1995	1996	1995	1994
Live births . . . . .	302,000	300,000	13.4	13.4	3,899,000	3,892,000	14.7	14.8	15.3
Fertility rate . . . . .	...	...	59.8	59.3	...	...	65.4	65.5	67.1
Deaths . . . . .	200,000	197,000	8.9	8.8	2,311,000	2,309,000	8.7	8.8	8.8
Infant deaths . . . . .	2,300	2,400	7.2	7.7	28,100	29,300	7.2	7.6	7.9
Natural increase . . . . .	102,000	103,000	4.5	4.6	1,588,000	1,583,000	6.0	6.0	6.5
Marriages . . . . .	184,000	169,000	8.1	7.6	2,344,000	2,336,000	8.8	8.9	9.1
Divorces . . . . .	94,000	92,000	4.2	4.1	1,150,000	1,169,000	4.3	4.4	4.6
Population base (in millions) . . . . .	...	...	266.3	263.8	...	...	265.2	262.8	260.7

... Category not applicable.

NOTES: Figures include revisions received from the States. Twelve-month figures for the current year reflect revisions received for previous months, and figures for earlier years may differ from those previously published.



U.S. DEPARTMENT OF HEALTH AND HUMAN SERVICES  
Centers for Disease Control and Prevention  
National Center for Health Statistics



the number of births that 1,000 women would have if they experienced a given set of age-specific birth rates during their childbearing years.

**Natural increase**

As a result of natural increase, the excess of births over deaths, an estimated 102,000 people or 4.5 persons per 1,000 population were added to the population during December 1996.

For 1996, 1,588,000 persons were added to the population. This represented a rate of natural increase of 6.0, the same as the rate for 1995. The steady rate of natural increase was due to similar slight declines in the birth and death rates.

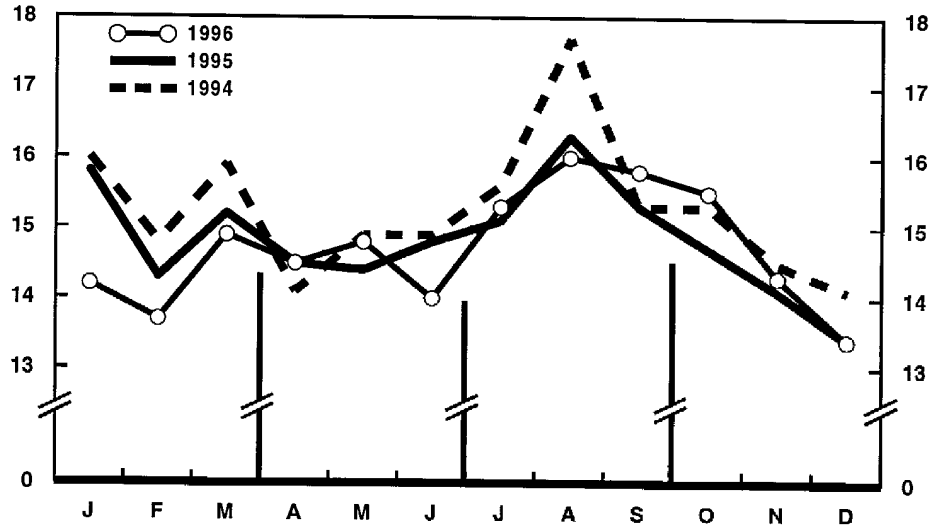
**Marriages**

An estimated 184,000 marriages were performed in December 1996, 9 percent more than in December 1995 (169,000). The marriage rate for December per 1,000 population was 7 percent higher in 1996 (8.1) than in 1995 (7.6).

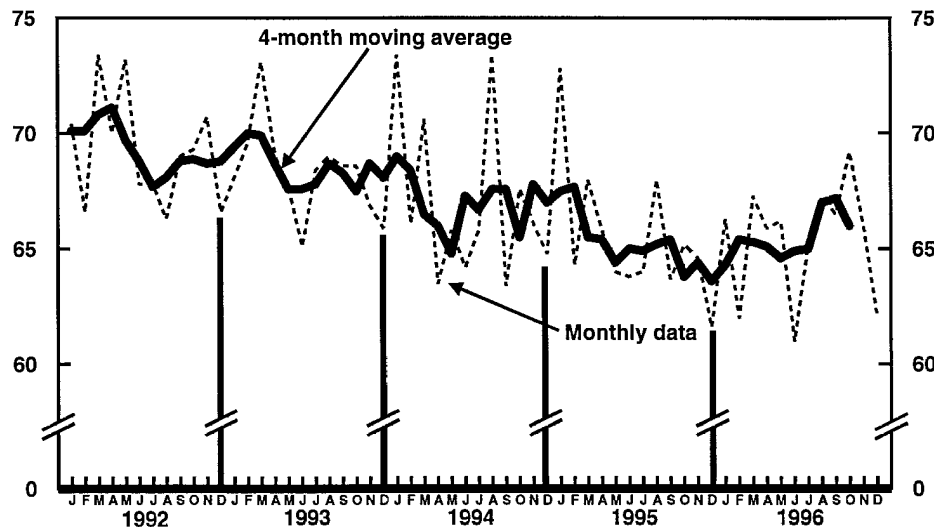
The provisional number of marriages for 1996 was 2,344,000, less than 1 percent more than the number for 1995 (2,336,000). Although the number rose slightly, the marriage rate per 1,000 population for 1996 (8.8) was 1 percent lower than the 1995 marriage rate (8.9). This rate has generally declined since the early 1980's and is currently the lowest annual rate since 1963 (2).

The decline in marriages is also shown by the trends in the marriage rate per 1,000 unmarried women 15 years of age and over and by the marriage rate per 1,000 unmarried women 15-44 years of age. The marriage rate per 1,000 unmarried women 15 years of age and over has dropped steadily since 1990 and was 2 percent lower in 1996 (49.7) than in 1995 (50.8). Similarly, the marriage rate per 1,000 unmarried women 15-44 years of age has declined annually since 1990 and was 2 percent lower in 1996 (81.5) than in 1995 (83.0).

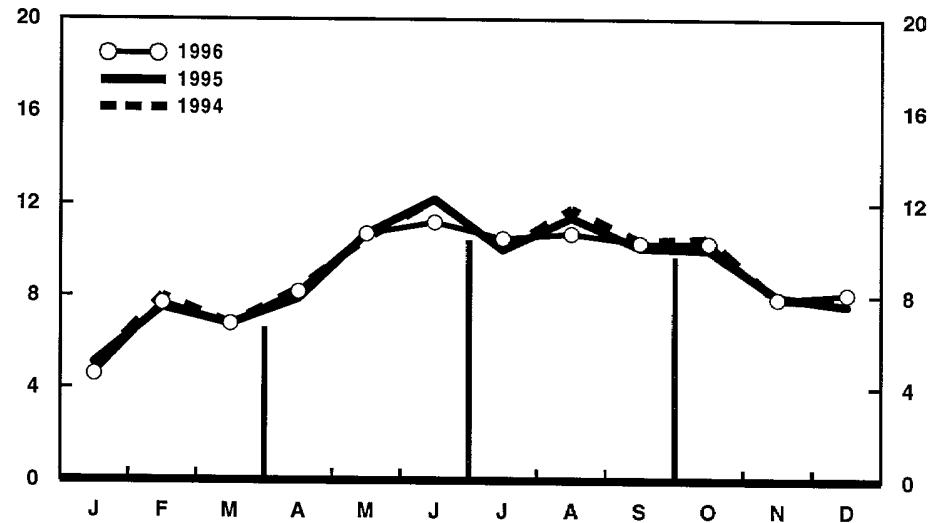
Marriages in 1996 exhibited the typical seasonal pattern with the peak number in June (242,000) and the lowest number in January (100,000). Other months with high numbers of marriages were May (241,000) and August (239,000).



Provisional birth rates per 1,000 population by month: United States, 1994-96



Provisional seasonally adjusted fertility rates per 1,000 women aged 15-44 years: United States, 1992-96



Provisional marriage rates per 1,000 population by month: United States, 1994-96

Although the national marriage total in 1996 was slightly higher than in 1995, the majority of areas (30 States and the District of Columbia) had lower numbers in 1996 than in 1995. The remaining 19 States (excluding Maine whose data were not available) had higher numbers of marriages in 1996 than in 1995.

**Divorces**

The estimated number of divorces granted in December 1996 (94,000) was 2 percent higher than the number granted in December a year earlier. The divorce rate per 1,000 population for December also increased 2 percent, from 4.1 in 1995 to 4.2 in 1996.

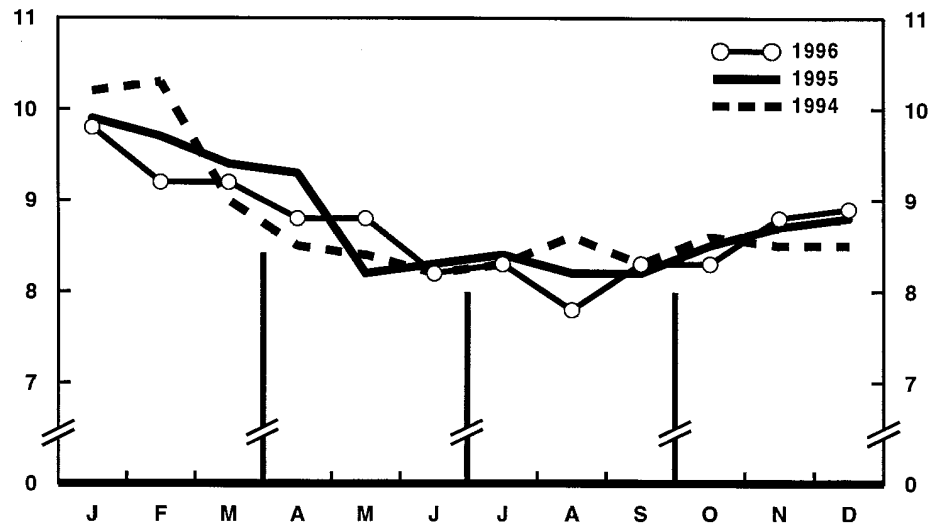
The cumulative number of divorces granted in 1996 was 1,150,000, 2 percent fewer than the number for 1995 (1,169,000). The divorce rate per 1,000 population for 1996 (4.3) was 2 percent lower than for 1995 (4.4) and the lowest annual divorce rate in over two decades (3). The divorce rate per 1,000 married women 15 years of age and over was 19.5 in 1996, 2 percent lower than for 1995 (19.8) and the lowest annual rate since 1974.

The number of divorces granted in 1996 was lower than the number granted in 1995 for 28 States. The number of divorces was higher for 16 States. The following areas did not provide provisional divorce data for 1996: California, Colorado, District of Columbia, Indiana, Maine, Texas, and Louisiana.

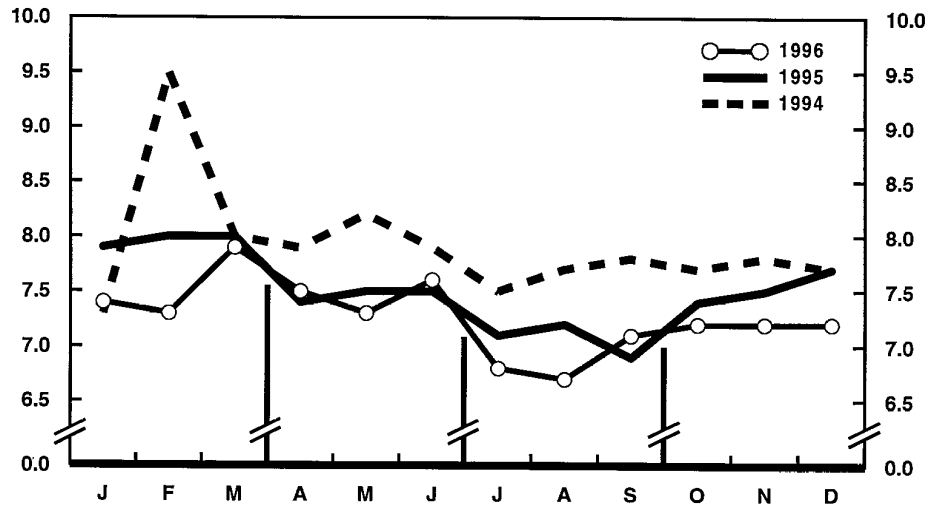
**Deaths**

The provisional count of deaths furnished by the 50 States and the District of Columbia during 1996 totaled 2,311,000, which was 2,000 more deaths than in the previous year. The death rate of 8.7 per 1,000 population was 1 percent below the rate for 1995 (8.8). About 28,100 of these deaths were to infants under 1 year of age, yielding an infant mortality rate of 7.2 per 1,000 live births. This rate was 5 percent lower than the rate of 7.6 for 1995.

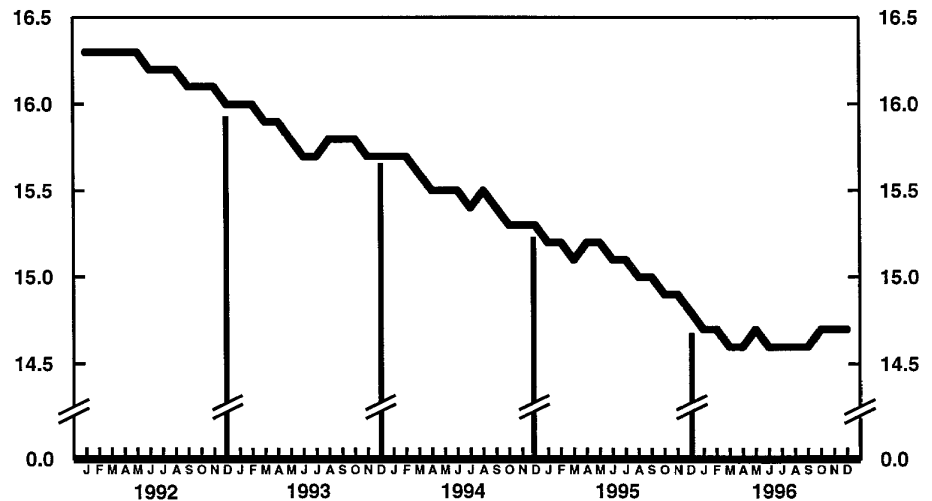
*Current Mortality Sample, 12 months ending with November 1996*—The provisional death rate for the 12 months ending



Provisional death rates per 1,000 population by month: United States, 1994-96



Provisional infant mortality rates per 1,000 live births by month: United States, 1994-96



Provisional birth rates per 1,000 population for successive 12-month periods ending with month indicated: United States, 1992-96

with November 1996 was 871.0 per 100,000 population, 1 percent lower than the rate of 876.6 for the 12-month period ending November 1995. The provisional age-adjusted death rate for the 12-month period ending with November 1996 was 492.9 per 100,000 U.S. standard population, 2 percent lower than the rate of 503.0 for the 12-month period ending with November 1995. The age-adjusted death rates control for changes and variations in the age composition of the population; therefore, they are better indicators than crude rates for showing changes in mortality risk over time and for showing differences between race-sex groups within the population. Among the four race-sex groups, the estimated age-adjusted death rates decreased for white males, black males, and black females. By age the death rate for the total population decreased for the age groups 1–4 years, 25–34 years, 35–44 years, 45–54 years, and 75–84 years of age.

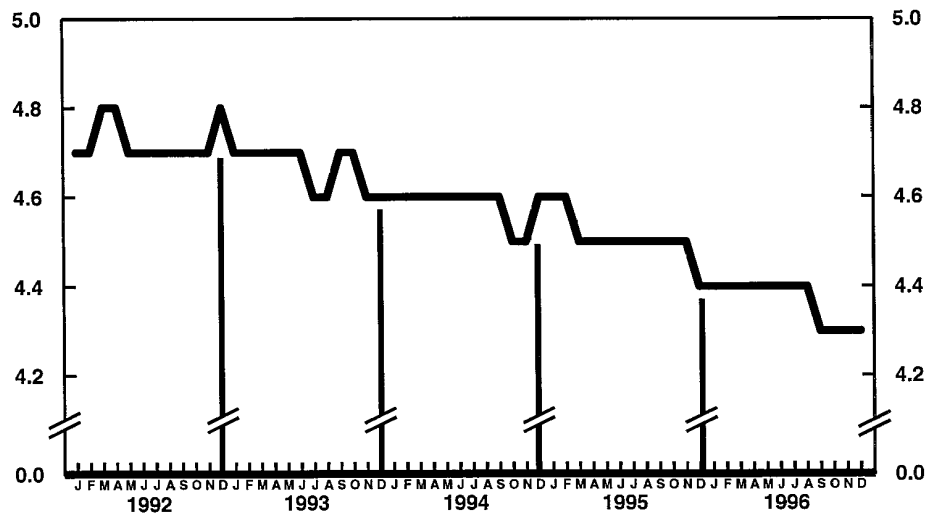
Among the major causes of death, the estimated death rate decreased between the two successive 12-month periods for Chronic liver disease and cirrhosis and Human immunodeficiency virus infection. The death rate increased for Alzheimer’s disease. The increase for Alzheimer’s disease may reflect changes in diagnostic practices rather than real increases in mortality from this cause.

The death rate for injury by firearms for the 12 months ending with November 1996 was 13.1 per 100,000 population, compared with a rate of 13.5 for the comparable 12-month period a year earlier.

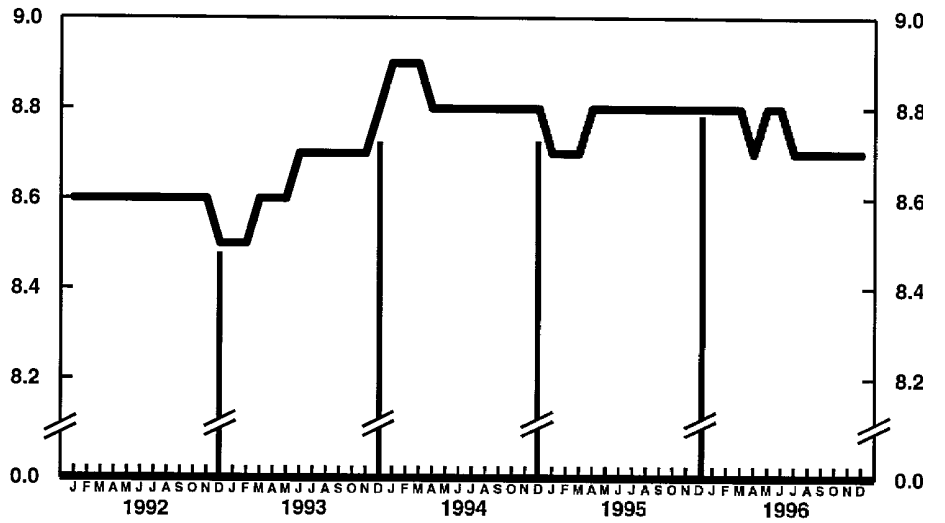
The infant mortality rate for the 12 months ending with November 1996 was 727.2 per 100,000 live births, 4 percent lower than the rate of 755.2 for the same 12-month period a year earlier. For infants under 28 days of age, the 12-month rate ending November 1996 was 480.4 compared with the rate of 483.4 for the 12-month period a year earlier. The change in the mortality rate for infants under 28 days of age was not statistically significant. The infant mortality rate for infants aged 28 days–11 months was 246.9, 9 percent lower than the rate of 270.2 for the 12-month period a year earlier. Among causes of infant death, changes in the infant mortality rate between the two successive 12-month periods were not statistically significant.



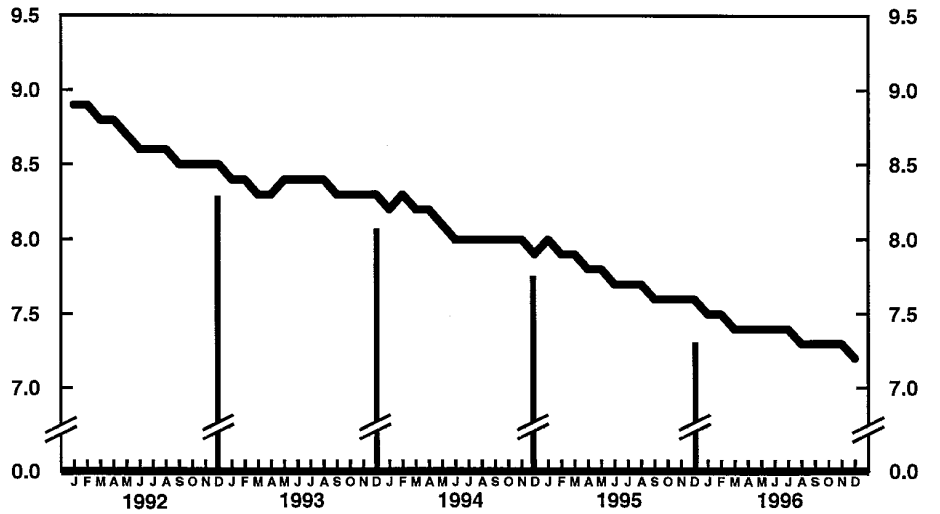
Provisional marriage rates per 1,000 population for successive 12-month periods ending with month indicated: United States, 1992–96



Provisional divorce rates per 1,000 population for successive 12-month periods ending with month indicated: United States, 1992–96



Provisional death rates per 1,000 population for successive 12-month periods ending with month indicated: United States, 1992-96



Provisional infant mortality rates per 1,000 live births for successive 12-month periods ending with month indicated: United States, 1992-96

**Table 1. Provisional number of live births, marriages, divorces, deaths, and infant deaths and rates, by month: United States, January 1995–December 1996**

[Data are provisional and are subject to monthly reporting variation; see [Technical notes](#)]

Period	Live births				Marriages		Divorces		Deaths		Infant deaths	
	Number	Rate per 1,000 women aged 15–44 years		Number	Rate per 1,000 population	Number	Rate per 1,000 population	Number	Rate per 1,000 population	Number	Rate per 1,000 live births	
		Unadjusted	Seasonally adjusted <sup>1</sup>									
<b>1995:</b>												
January	350,000	15.8	69.4	72.8	111,000	5.1	96,000	4.3	220,000	9.9	2,700	7.9
February	287,000	14.3	63.1	64.3	146,000	7.5	89,000	4.4	194,000	9.7	2,400	8.0
March	338,000	15.2	67.1	68.0	148,000	6.8	98,000	4.4	208,000	9.4	2,700	8.0
April	313,000	14.5	64.1	65.8	165,000	7.9	98,000	4.6	200,000	9.3	2,300	7.4
May	321,000	14.4	63.5	64.0	238,000	10.7	103,000	4.6	184,000	8.2	2,500	7.5
June	318,000	14.8	65.2	63.8	263,000	12.2	104,000	4.8	180,000	8.3	2,400	7.5
July	337,000	15.1	66.6	64.0	224,000	10.0	97,000	4.4	188,000	8.4	2,400	7.1
August	364,000	16.3	72.1	68.0	254,000	11.4	99,000	4.4	184,000	8.2	2,400	7.2
September	331,000	15.3	67.6	63.7	219,000	10.1	99,000	4.6	178,000	8.2	2,200	6.9
October	328,000	14.7	64.9	65.2	224,000	10.0	98,000	4.4	190,000	8.5	2,500	7.4
November	306,000	14.1	62.6	64.6	174,000	8.0	95,000	4.4	188,000	8.7	2,300	7.5
December	300,000	13.4	59.3	61.6	169,000	7.6	92,000	4.1	197,000	8.8	2,400	7.7
<b>1996:</b>												
January	318,000	14.2	63.2	66.3	100,000	4.6	94,000	4.2	220,000	9.8	2,400	7.4
February	286,000	13.7	60.7	62.0	155,000	7.7	85,000	4.1	193,000	9.2	2,200	7.3
March	334,000	14.9	66.3	67.3	147,000	6.8	93,000	4.2	206,000	9.2	2,600	7.9
April	314,000	14.5	64.3	65.9	172,000	8.2	95,000	4.4	192,000	8.8	2,300	7.5
May	332,000	14.8	65.7	66.2	241,000	10.7	103,000	4.6	198,000	8.8	2,400	7.3
June	304,000	14.0	62.2	61.0	242,000	11.2	103,000	4.8	179,000	8.2	2,300	7.6
July	343,000	15.3	67.9	65.2	235,000	10.5	96,000	4.3	187,000	8.3	2,300	6.8
August	360,000	16.0	71.3	67.3	239,000	10.7	101,000	4.5	176,000	7.8	2,200	6.7
September	345,000	15.8	70.6	66.5	225,000	10.3	92,000	4.2	182,000	8.3	2,400	7.1
October	348,000	15.5	68.9	69.2	231,000	10.3	99,000	4.4	188,000	8.3	2,500	7.2
November	313,000	14.3	63.9	66.0	171,000	7.9	94,000	4.3	191,000	8.8	2,300	7.2
December	302,000	13.4	59.8	62.1	184,000	8.1	94,000	4.2	200,000	8.9	2,300	7.2

<sup>1</sup>The method of seasonal adjustment, developed by the U.S. Bureau of the Census, is described in *The X-11 Variant of the Census Method II Seasonal Adjustment Program*, Technical Paper No. 15 (1967 revision).

NOTE: Figures include all revisions received from the States and, therefore, may differ from those previously published.

**Table 2. Provisional number of live births and deaths: Each division and State, December 1995 and 1996, and cumulative figures, 1994–96**

[Data are estimates by State of residence; see [Technical notes](#)]

Area	Live births					Deaths				
	December		January–December			December		January–December		
	1996	1995	1996	1995	1994	1996	1995	1996	1995	1994
New England . . . . .	10,958	10,795	171,393	178,775	175,080	12,219	10,819	119,119	120,461	117,309
Maine . . . . .	1,167	953	13,718	14,006	14,320	1,011	681	11,035	11,625	11,386
New Hampshire . . . . .	1,084	1,330	14,125	15,069	14,605	801	975	9,114	9,244	8,907
Vermont . . . . .	517	485	6,773	6,780	7,158	367	413	4,885	5,031	4,573
Massachusetts . . . . .	3,665	4,487	80,165	85,045	83,449	5,871	4,714	55,328	55,965	54,558
Rhode Island . . . . .	1,142	1,036	12,601	12,695	13,440	1,029	943	9,574	9,640	9,333
Connecticut . . . . .	3,383	2,504	44,011	45,180	42,108	3,140	3,093	29,183	28,956	28,552
Middle Atlantic . . . . .	51,628	38,078	535,193	531,123	553,536	31,728	31,378	364,233	371,192	368,716
New York . . . . .	22,604	20,164	271,569	264,253	279,187	13,652	13,453	162,875	168,140	167,977
New Jersey . . . . .	16,489	7,431	113,713	115,116	117,289	5,887	6,617	71,895	74,974	72,575
Pennsylvania . . . . .	12,535	10,483	149,911	151,754	157,060	12,189	11,308	129,463	128,078	128,164
East South Central . . . . .	48,761	50,592	624,455	625,045	643,455	37,624	34,851	394,908	395,210	394,609
Ohio . . . . .	10,799	12,564	152,233	155,568	162,059	9,850	9,374	105,213	105,799	105,623
Indiana . . . . .	7,604	8,654	83,417	84,188	83,381	4,613	4,772	54,321	52,514	53,284
Illinois . . . . .	15,001	14,833	184,526	185,442	189,228	10,898	9,898	106,355	108,735	107,685
Michigan . . . . .	10,217	9,567	137,518	132,783	139,931	8,043	6,848	83,972	83,394	83,320
Wisconsin . . . . .	5,140	4,974	66,761	67,064	68,856	4,220	3,959	45,047	44,768	44,697
West North Central . . . . .	21,770	19,414	253,702	253,754	251,531	15,708	16,293	168,223	170,443	170,038
Minnesota . . . . .	4,969	4,699	63,657	62,752	64,681	3,371	3,197	36,804	37,028	36,436
Iowa . . . . .	3,291	4,795	34,838	36,399	35,926	2,653	2,996	26,315	25,897	26,364
Missouri . . . . .	5,242	5,487	73,132	74,946	75,366	4,988	5,369	53,697	55,599	56,010
North Dakota . . . . .	673	782	8,396	8,719	8,639	440	600	5,753	6,099	6,134
South Dakota . . . . .	932	656	10,081	10,574	10,615	510	534	6,314	6,901	6,858
Nebraska . . . . .	2,040	1,905	23,355	23,159	23,032	1,663	1,453	15,472	15,284	14,742
Kansas . . . . .	4,623	1,090	40,243	37,205	33,272	2,083	2,144	23,868	23,635	23,494
South Atlantic . . . . .	51,576	53,771	658,995	655,356	661,731	38,116	36,147	440,186	436,204	428,629
Delaware . . . . .	897	737	10,142	10,013	10,361	620	551	6,443	6,151	6,185
Maryland . . . . .	4,028	6,126	71,042	72,198	71,553	3,800	3,463	41,965	41,004	40,600
District of Columbia . . . . .	669	687	8,240	8,943	9,669	598	594	6,317	6,653	6,921
Virginia . . . . .	7,301	4,760	89,149	89,948	95,865	5,095	4,644	52,847	52,989	53,829
West Virginia . . . . .	1,037	1,538	19,621	20,954	21,554	1,750	1,685	19,106	19,887	20,221
North Carolina . . . . .	7,189	8,132	106,261	102,165	101,911	6,074	5,673	66,357	65,132	64,512
South Carolina . . . . .	3,486	3,326	50,568	49,841	50,907	3,389	2,434	34,603	32,570	31,570
Georgia . . . . .	10,496	8,184	114,603	113,196	108,908	4,771	4,996	58,802	58,230	56,377
Florida . . . . .	16,473	20,281	189,369	188,098	191,003	12,019	12,107	153,746	153,588	148,414
East South Central . . . . .	19,389	15,720	229,159	223,287	231,741	13,080	12,747	156,908	158,420	156,119
Kentucky . . . . .	3,695	3,501	52,545	51,015	51,926	3,211	2,858	37,550	38,319	37,438
Tennessee . . . . .	6,845	4,637	73,658	73,892	75,688	3,986	3,815	49,934	50,658	49,665
Alabama . . . . .	4,919	4,655	61,514	61,182	60,745	3,543	3,649	42,668	42,254	42,092
Mississippi . . . . .	3,930	2,927	41,442	37,198	43,382	2,340	2,425	26,756	27,189	26,924
West South Central . . . . .	37,637	36,593	463,073	480,765	470,975	20,255	21,215	235,943	239,795	237,155
Arkansas . . . . .	3,055	2,805	35,876	34,340	34,571	2,278	2,289	25,666	25,960	26,627
Louisiana . . . . .	5,159	5,506	66,291	67,376	68,454	3,650	3,239	40,460	39,348	40,447
Oklahoma . . . . .	3,325	3,074	45,151	45,894	45,682	2,870	2,836	33,224	32,852	32,473
Texas <sup>1</sup> . . . . .	26,098	25,208	315,755	333,155	322,268	11,457	12,851	136,593	141,635	137,608
Mountain . . . . .	19,598	16,371	254,829	240,966	243,362	9,665	8,688	121,162	113,880	113,059
Montana . . . . .	824	939	10,797	11,230	11,032	665	675	7,710	7,646	7,357
Idaho . . . . .	1,568	1,466	18,868	17,735	17,358	774	734	8,685	8,488	8,559
Wyoming . . . . .	512	454	6,198	6,293	6,385	347	381	3,610	3,781	3,522
Colorado . . . . .	3,747	3,598	47,610	49,938	54,144	2,552	1,785	25,853	24,852	24,437
New Mexico . . . . .	2,081	2,146	27,173	27,142	27,981	842	910	12,325	12,475	12,279
Arizona . . . . .	6,528	2,777	79,530	68,434	66,143	2,631	2,017	39,005	33,633	34,643
Utah . . . . .	3,194	3,238	41,214	38,870	38,808	870	1,027	11,077	10,814	10,524
Nevada . . . . .	1,144	1,753	23,439	21,324	21,511	984	1,159	12,897	12,191	11,738
Pacific . . . . .	43,984	57,873	695,959	713,738	734,658	21,613	24,652	310,475	302,091	300,660
Washington . . . . .	5,929	5,831	79,808	78,160	79,296	2,965	3,914	39,493	40,582	39,642
Oregon . . . . .	2,814	2,562	43,798	42,953	42,276	2,725	2,230	28,293	28,011	27,317
California <sup>1</sup> . . . . .	32,911	47,297	543,832	564,156	581,763	14,953	17,677	232,266	223,521	224,039
Alaska . . . . .	906	645	10,176	10,081	12,079	332	201	2,562	2,450	2,443
Hawaii . . . . .	1,424	1,538	18,345	18,388	19,244	638	630	7,861	7,527	7,219
Puerto Rico <sup>2</sup> . . . . .	5,856	5,615	61,321	61,160	---	3,874	2,953	28,582	30,138	---

--- Data not available.

<sup>1</sup>Figures include adjustments for varying lengths of reporting periods; see [Technical notes](#).

<sup>2</sup>Data for Puerto Rico are not included in U.S. total figures.

NOTES: Figures include all revisions received from the States. Cumulative figures for the current year reflect revisions received for previous months, and figures for earlier years may differ from those previously published.

**Table 3. Provisional number of marriages and divorces: Each division and State, December 1995 and 1996, and cumulative figures, 1994–96**

[By State of occurrence. Number of events reported; see [Technical notes](#). Divorces include reported annulments]

Area	Marriages					Divorces				
	December		January–December			December		January–December		
	1996	1995	1996	1995	1994	1996	1995	1996	1995	1994
New England	15,288	6,593	185,481	99,998	105,080	12,054	4,463	133,617	40,849	39,646
Maine	---	387	---	10,757	10,872	---	592	---	5,467	5,433
New Hampshire	488	665	9,720	9,631	9,818	488	289	5,001	4,871	5,041
Vermont	277	291	5,923	6,051	5,831	102	220	2,490	2,786	2,316
Massachusetts	2,550	2,496	40,584	43,593	49,695	242	1,407	12,368	13,453	14,530
Rhode Island	446	480	7,828	7,385	6,976	241	286	3,228	3,654	3,231
Connecticut	1,527	2,274	21,426	22,581	21,888	981	1,669	10,530	10,618	9,095
Middle Atlantic	26,065	22,089	274,124	275,605	277,903	8,954	9,253	124,200	119,731	123,134
New York <sup>2</sup>	17,120	12,490	152,263	147,405	149,615	3,932	3,967	60,826	55,999	59,195
New Jersey	5,688	4,295	51,688	52,397	52,776	2,230	1,879	25,048	24,293	23,899
Pennsylvania	3,257	5,304	70,173	75,803	75,512	2,792	3,407	38,326	39,439	40,040
East North Central	23,318	20,779	327,558	331,032	342,917	<sup>1</sup> 13,406	<sup>1</sup> 12,220	<sup>1</sup> 141,098	<sup>1</sup> 144,898	<sup>1</sup> 149,571
Ohio	6,422	5,864	82,844	90,125	92,797	4,787	4,270	44,638	48,682	49,968
Indiana	3,768	3,764	49,198	50,426	50,282	---	---	---	---	---
Illinois	6,995	5,733	90,178	83,218	92,719	3,507	3,140	40,442	38,784	43,398
Michigan	4,503	3,926	69,091	70,963	70,751	3,615	3,305	38,690	39,910	38,727
Wisconsin	1,630	1,492	36,247	36,300	36,368	1,497	1,505	17,328	17,522	17,478
West North Central	8,976	8,528	148,239	145,821	144,968	6,156	6,255	74,098	75,256	77,334
Minnesota	1,754	1,600	33,185	32,782	32,510	1,433	1,520	15,211	15,828	16,217
Iowa	1,198	1,077	23,832	22,049	22,732	757	914	9,896	10,504	10,930
Missouri	3,341	2,835	46,102	44,879	44,223	2,435	2,629	26,253	26,844	26,324
North Dakota	200	272	5,029	4,597	4,791	120	178	2,242	2,204	2,201
South Dakota	429	417	6,728	7,281	7,451	230	267	2,732	2,888	3,022
Nebraska	897	630	12,762	12,125	12,347	451	456	6,091	6,256	6,547
Kansas	1,157	1,697	20,601	22,108	20,914	730	291	11,673	10,732	12,093
South Atlantic	36,345	32,662	441,884	442,896	442,502	<sup>1</sup> 19,328	19,890	<sup>1</sup> 223,581	227,312	233,820
Delaware	303	364	5,198	5,355	5,066	225	283	3,347	3,671	3,385
Maryland	3,407	3,509	41,781	42,808	43,385	1,937	1,922	16,323	15,025	17,439
District of Columbia	882	890	3,360	3,535	3,616	---	227	---	1,858	2,244
Virginia	5,129	4,772	65,406	67,938	69,256	3,001	2,825	28,647	28,897	30,016
West Virginia	757	676	11,068	11,205	10,946	904	1,094	8,024	9,393	9,179
North Carolina	5,322	4,456	61,902	61,644	51,934	3,105	2,770	35,877	36,978	36,292
South Carolina	3,812	3,687	43,136	44,619	50,872	1,079	1,145	15,236	14,753	15,301
Georgia	4,125	3,800	60,092	61,451	62,879	2,326	3,366	35,909	37,209	37,001
Florida	12,608	10,508	149,941	144,341	144,548	6,751	6,258	80,218	79,528	82,963
East South Central	16,312	16,351	194,061	193,445	189,891	6,708	6,753	97,087	94,997	97,706
Kentucky	2,977	4,166	43,290	47,576	47,322	1,583	1,799	21,199	22,883	22,211
Tennessee	7,725	6,378	82,064	82,335	80,030	2,643	1,857	34,412	33,081	34,167
Alabama	3,547	3,689	47,367	42,006	40,179	1,507	1,838	25,779	25,957	26,116
Mississippi	2,063	2,118	21,340	21,528	22,360	975	1,259	15,697	13,076	15,212
West South Central	26,594	23,084	281,532	294,534	300,014	<sup>1</sup> 3,230	<sup>1</sup> 9,680	<sup>1</sup> 34,522	<sup>1</sup> 137,740	<sup>1</sup> 138,386
Arkansas	3,625	3,590	36,232	36,626	38,169	1,600	1,405	15,239	16,041	17,458
Louisiana	5,048	3,708	38,932	40,840	41,750	---	---	---	---	---
Oklahoma	2,417	2,485	26,675	28,546	29,297	1,630	1,638	19,283	21,829	21,855
Texas <sup>3</sup>	15,504	13,301	179,693	188,522	190,798	---	6,637	---	99,870	99,073
Mountain	21,554	20,698	279,471	272,039	270,841	<sup>1</sup> 6,954	<sup>1</sup> 5,260	<sup>1</sup> 76,377	<sup>1</sup> 74,305	<sup>1</sup> 69,966
Montana	439	353	6,626	6,645	6,895	362	363	4,251	4,179	4,153
Idaho	966	951	14,970	15,479	15,234	600	547	7,016	6,770	7,075
Wyoming	336	548	4,897	5,153	4,825	289	244	3,122	3,197	3,071
Colorado	2,354	2,361	34,453	34,295	34,367	---	---	---	---	---
New Mexico <sup>4,5</sup>	1,323	1,168	16,026	15,094	12,159	839	781	10,945	11,279	9,882
Arizona <sup>2</sup>	3,026	3,286	39,223	38,949	36,711	1,909	2,215	25,826	27,633	23,725
Utah	1,557	1,244	22,048	21,639	20,325	875	660	9,276	8,892	8,999
Nevada	11,553	10,787	141,228	134,785	140,325	2,080	450	15,941	12,355	13,061
Pacific	21,442	24,595	308,704	291,548	295,057	<sup>1</sup> 3,185	<sup>1</sup> 3,906	<sup>1</sup> 49,194	<sup>1</sup> 53,152	<sup>1</sup> 54,616
Washington	2,694	2,586	39,194	42,030	43,557	1,515	1,793	26,530	29,677	29,976
Oregon	1,851	1,460	25,568	25,688	25,186	991	1,269	15,022	14,982	16,307
California	14,873	18,703	219,039	199,609	202,827	---	---	---	---	---
Alaska	662	373	5,425	5,461	5,560	322	252	2,831	2,999	3,354
Hawaii	1,362	1,473	19,478	18,760	17,927	357	592	4,811	5,494	4,979
Puerto Rico <sup>6</sup>	5,142	4,276	30,914	32,392	---	---	---	---	---	---

--- Data not available.

<sup>1</sup>Excludes figures for State(s) shown below as not available.

<sup>2</sup>Figures for marriages are marriage licenses issued for some counties.

<sup>3</sup>Figures include adjustments for varying lengths of reporting periods; see [Technical notes](#).

<sup>4</sup>Figures for marriages are marriage licenses issued.

<sup>5</sup>Figures for divorces include estimates for some counties.

<sup>6</sup>Data for Puerto Rico are not included in U.S. total figures.

NOTES: Figures include all revisions received from the States. Cumulative figures for the current year reflect revisions received for previous months, and figures for earlier years may differ from those previously published.



**Table 4. Provisional number of deaths under 1 year and infant mortality rates: Each division and State, January–December 1995 and 1996**

[Data are estimates by State of residence. Figures should be interpreted with caution because of conversion of place of occurrence to place of residence; see [Technical notes](#). Infant mortality rates are deaths under 1 year per 1,000 live births in specified area]

Area	January–December			
	1996		1995	
	Number	Rate	Number	Rate
New England . . . . .	930	5.4	965	5.4
Maine . . . . .	60	4.4	75	5.4
New Hampshire . . . . .	81	5.7	73	4.8
Vermont . . . . .	60	8.9	39	5.8
Massachusetts . . . . .	390	4.9	407	4.8
Rhode Island . . . . .	66	5.2	87	6.9
Connecticut . . . . .	273	6.2	284	6.3
Middle Atlantic . . . . .	3,768	7.0	4,029	7.6
New York . . . . .	1,828	6.7	2,090	7.9
New Jersey . . . . .	826	7.3	790	6.9
Pennsylvania . . . . .	1,114	7.4	1,149	7.6
East North Central . . . . .	4,888	7.8	5,355	8.6
Ohio . . . . .	1,178	7.7	1,310	8.4
Indiana . . . . .	626	7.5	756	9.0
Illinois . . . . .	1,502	8.1	1,662	9.0
Michigan . . . . .	1,082	7.9	1,129	8.5
Wisconsin . . . . .	500	7.5	498	7.4
West North Central . . . . .	1,880	7.4	1,845	7.3
Minnesota . . . . .	407	6.4	401	6.4
Iowa . . . . .	227	6.5	240	6.6
Missouri . . . . .	595	8.1	591	7.9
North Dakota . . . . .	36	4.3	49	5.6
South Dakota . . . . .	54	5.4	98	9.3
Nebraska . . . . .	203	8.7	178	7.7
Kansas . . . . .	358	8.9	288	7.7
South Atlantic . . . . .	5,443	8.3	5,626	8.6
Delaware . . . . .	78	7.7	72	7.2
Maryland . . . . .	594	8.4	629	8.7
District of Columbia . . . . .	123	14.9	160	17.9
Virginia . . . . .	660	7.4	688	7.6
West Virginia . . . . .	161	8.2	151	7.2
North Carolina . . . . .	975	9.2	952	9.3
South Carolina . . . . .	402	7.9	448	9.0
Georgia . . . . .	1,035	9.0	1,110	9.8
Florida . . . . .	1,415	7.5	1,416	7.5
East South Central . . . . .	2,051	9.0	2,136	9.6
Kentucky . . . . .	397	7.6	409	8.0
Tennessee . . . . .	622	8.4	709	9.6
Alabama . . . . .	631	10.3	624	10.2
Mississippi . . . . .	401	9.7	394	10.6
West South Central . . . . .	3,216	6.9	3,544	7.4
Arkansas . . . . .	288	8.0	298	8.7
Louisiana . . . . .	612	9.2	648	9.6
Oklahoma . . . . .	403	8.9	408	8.9
Texas <sup>1</sup> . . . . .	1,913	6.1	2,190	6.6
Mountain . . . . .	1,765	6.9	1,637	6.8
Montana . . . . .	79	7.3	84	7.5
Idaho . . . . .	134	7.1	114	6.4
Wyoming . . . . .	37	6.0	56	8.9
Colorado . . . . .	362	7.6	356	7.1
New Mexico . . . . .	160	5.9	191	7.0
Arizona . . . . .	605	7.6	509	7.4
Utah . . . . .	242	5.9	200	5.1
Nevada . . . . .	146	6.2	127	6.0
Pacific . . . . .	4,142	6.0	4,249	6.0
Washington . . . . .	425	5.3	367	4.7
Oregon . . . . .	244	5.6	263	6.1
California <sup>1</sup> . . . . .	3,287	6.0	3,441	6.1
Alaska . . . . .	80	7.9	68	6.7
Hawaii . . . . .	106	5.8	110	6.0
Puerto Rico <sup>2</sup> . . . . .	561	9.1	653	10.7

<sup>1</sup>Figures include adjustments for varying lengths of reporting periods; see [Technical notes](#).

<sup>2</sup>Data for Puerto Rico are not included in U.S. total figures.

NOTES: Figures include all revisions received from the States. Figures for the current year reflect revisions received for previous months, and figures for earlier years may differ from those previously published.

**Table 5. Provisional number of deaths and death rates, by age, race, and sex, and age-adjusted death rates by race and sex: United States, November 1995 and 1996, cumulative figures 1995 and 1996, and 12 months ending with November 1995 and 1996**

[Data are provisional, estimated from a 10-percent sample of deaths. Age-specific rates on an annual basis per 100,000 population in specified group; age-adjusted rates per 100,000 U.S. standard population; see [Technical notes](#). Because of rounding of estimates, figures may not add to totals. For method of computation and information on standard errors of the estimates, see [Technical notes](#)]

Age, race, and sex	November				January–November				12 months ending with November							
	1996		1995		1996		1995		1996		1995					
	Number	Rate	Number	Rate	Number	Rate	Number	Rate	Number	Rate	Number	Rate				
<b>All races, both sexes<sup>1</sup></b>																
All ages . . . . .	191,000	877.8	188,000	866.7	2,111,000	870.5	2,112,000	879.0	2,308,000	871.0	2,302,000	876.6				
Under 1 year . . . . .	} 3,340	70.6	3,680	77.5	25,800	<sup>2</sup> 734.5	26,900	<sup>2</sup> 763.6	28,200	<sup>2</sup> 733.0	29,400	<sup>2</sup> 762.9				
1–4 years . . . . .					5,470	38.3	6,250	43.3	5,950	38.2	6,790	43.1				
5–14 years . . . . .					8,080	22.9	7,430	21.3	8,870	23.0	8,210	21.6				
15–24 years . . . . .					2,660	89.4	2,910	98.5	31,090	94.5	31,890	97.0	33,750	94.0	35,030	97.5
25–34 years . . . . .					4,130	125.5	4,790	143.3	48,200	130.2	53,800	143.8	52,660	130.2	58,680	143.5
35–44 years . . . . .	8,000	223.6	8,530	242.6	88,520	223.8	93,910	241.8	97,250	225.1	101,710	239.6				
45–54 years . . . . .	12,130	450.5	11,550	444.7	130,900	443.2	131,540	463.5	142,510	442.2	143,050	461.8				
55–64 years . . . . .	19,430	1,103.8	18,980	1,089.5	214,230	1,097.6	214,860	1,111.6	233,810	1,096.8	234,040	1,108.1				
65–74 years . . . . .	39,730	2,604.3	37,660	2,442.5	437,210	2,555.9	438,970	2,558.2	477,190	2,553.0	478,230	2,550.3				
75–84 years . . . . .	54,370	5,748.4	53,220	5,758.2	601,690	5,765.8	596,380	5,857.7	656,890	5,762.2	651,270	5,855.2				
85 years and over . . . . .	47,630	15,279.7	45,880	15,210.0	519,080	15,216.4	508,540	15,350.5	568,790	15,269.5	553,730	15,292.2				
Not stated . . . . .	70	...	70	...	880	...	950	...	950	...	990	...				
Age-adjusted rate <sup>3</sup> . . . . .	...	494.3	...	493.1	...	493.1	...	504.3	...	492.9	...	503.0				
<b>All races, male<sup>1</sup></b>																
All ages . . . . .	96,180	900.9	95,360	901.0	1,066,360	900.0	1,073,400	914.9	1,164,730	899.9	1,168,910	911.8				
Under 1 year . . . . .	} 1,810	74.7	1,990	81.8	14,170	<sup>2</sup> 787.9	14,790	<sup>2</sup> 821.5	15,700	<sup>2</sup> 795.7	16,270	<sup>2</sup> 825.5				
1–4 years . . . . .					3,040	41.8	3,570	48.6	3,320	41.7	3,880	48.1				
5–14 years . . . . .					4,780	26.5	4,550	25.5	5,260	26.6	4,990	25.6				
15–24 years . . . . .					2,010	131.4	2,350	155.8	23,480	139.7	24,440	145.7	25,480	138.9	26,870	146.5
25–34 years . . . . .					2,920	177.4	3,400	203.6	34,180	184.9	39,120	209.2	37,440	185.3	42,730	209.1
35–44 years . . . . .	5,340	300.2	5,950	341.1	60,070	305.9	65,000	337.3	65,960	337.0	70,350	334.1				
45–54 years . . . . .	7,850	595.8	7,290	574.5	82,900	574.5	83,110	599.3	90,590	575.5	90,300	596.7				
55–64 years . . . . .	11,730	1,399.8	11,490	1,387.0	129,100	1,390.0	128,870	1,403.0	140,710	1,387.3	140,300	1,398.0				
65–74 years . . . . .	22,340	3,281.3	21,810	3,178.3	246,680	3,235.8	251,170	3,294.5	269,490	3,235.6	273,070	3,277.8				
75–84 years . . . . .	26,640	7,155.6	25,910	7,189.0	295,370	7,222.2	292,430	7,406.6	322,090	7,207.2	319,050	7,399.1				
85 years and over . . . . .	15,470	17,378.8	15,110	17,848.4	171,980	17,866.0	165,720	17,893.6	188,060	17,893.4	180,470	17,833.0				
Not stated . . . . .	60	...	60	...	600	...	620	...	630	...	640	...				
Age-adjusted rate <sup>3</sup> . . . . .	...	625.8	...	635.1	...	627.7	...	648.0	...	627.7	...	645.9				
<b>All races, female<sup>1</sup></b>																
All ages . . . . .	95,310	855.7	91,910	829.0	1,044,790	842.3	1,037,960	844.2	1,142,150	842.7	1,132,160	842.6				
Under 1 year . . . . .	} 1,530	66.2	1,680	72.5	11,650	<sup>2</sup> 679.6	12,030	<sup>2</sup> 700.5	12,550	<sup>2</sup> 667.2	13,070	<sup>2</sup> 695.2				
1–4 years . . . . .					2,420	34.6	2,680	38.0	2,630	34.6	2,910	37.8				
5–14 years . . . . .					3,290	19.0	2,890	17.1	3,610	19.2	3,230	17.4				
15–24 years . . . . .					650	45.0	560	38.7	7,610	47.2	7,450	46.3	8,260	47.0	8,160	46.4
25–34 years . . . . .					1,210	73.6	1,390	83.1	14,020	75.7	14,680	78.5	15,230	75.3	15,950	78.0
35–44 years . . . . .	2,660	147.9	2,580	145.6	28,460	142.8	28,910	147.7	31,290	143.7	31,360	146.5				
45–54 years . . . . .	4,280	311.2	4,260	320.7	47,990	317.7	48,430	333.6	51,920	315.0	52,750	332.9				
55–64 years . . . . .	7,700	834.9	7,500	821.0	85,130	832.0	85,990	847.9	93,110	833.2	93,740	845.7				
65–74 years . . . . .	17,390	2,058.6	15,850	1,852.6	190,530	2,009.4	187,790	1,969.5	207,700	2,004.4	205,160	1,968.9				
75–84 years . . . . .	27,730	4,835.0	27,310	4,842.9	306,320	4,827.2	303,950	4,876.5	334,800	4,830.5	332,230	4,878.6				
85 years and over . . . . .	32,150	14,446.8	30,770	14,180.6	347,100	14,176.0	342,820	14,361.8	380,730	14,243.5	373,260	14,312.1				
Not stated . . . . .	10	...	10	...	280	...	330	...	320	...	350	...				
Age-adjusted rate <sup>3</sup> . . . . .	...	383.7	...	374.4	...	381.0	...	384.7	...	380.6	...	384.1				
<b>White</b>																
All ages . . . . .	163,820	907.2	160,190	891.3	1,815,010	903.3	1,812,900	909.0	1,984,160	903.9	1,976,420	906.9				
Under 1 year . . . . .	} 2,220	59.2	2,490	66.2	16,830	<sup>2</sup> 613.4	17,760	<sup>2</sup> 646.0	18,500	<sup>2</sup> 615.8	19,420	<sup>2</sup> 643.9				
1–4 years . . . . .					3,680	32.7	4,300	37.8	4,020	32.7	4,630	37.2				
5–14 years . . . . .					5,790	20.7	5,460	19.7	6,430	21.0	5,970	19.7				
15–24 years . . . . .					1,820	76.8	2,140	90.8	21,880	83.4	22,620	86.2	23,780	83.1	24,690	86.1
25–34 years . . . . .					2,950	110.5	3,040	111.5	33,980	112.8	37,640	123.0	37,170	112.9	41,220	123.4
35–44 years . . . . .	5,970	200.8	5,950	203.2	63,910	194.2	66,600	205.8	70,280	195.5	72,220	204.2				
45–54 years . . . . .	9,110	397.1	8,730	393.3	99,720	395.7	100,900	415.6	108,800	395.6	109,720	414.1				
55–64 years . . . . .	15,880	1,046.9	15,440	1,026.2	173,880	1,032.4	174,220	1,042.7	189,800	1,031.8	189,840	1,039.9				
65–74 years . . . . .	33,710	2,501.0	32,730	2,394.5	378,520	2,500.2	378,800	2,488.0	413,180	2,497.5	412,960	2,482.2				
75–84 years . . . . .	48,400	5,653.2	47,840	5,708.1	539,810	5,705.9	536,200	5,808.1	589,290	5,700.8	585,820	5,808.2				
85 years and over . . . . .	43,700	15,484.7	41,750	15,203.8	476,350	15,352.8	467,650	15,510.4	522,220	15,409.3	509,140	15,456.6				
Not stated . . . . .	50	...	70	...	640	...	750	...	690	...	770	...				
Age-adjusted rate <sup>3</sup> . . . . .	...	466.7	...	464.3	...	467.4	...	476.6	...	467.5	...	475.5				

See footnotes at end of table.

**Table 5. Provisional number of deaths and death rates, by age, race, and sex, and age-adjusted death rates by race and sex: United States, November 1995 and 1996, cumulative figures 1995 and 1996, and 12 months ending with November 1995 and 1996—Con.**

[Data are provisional, estimated from a 10-percent sample of deaths. Age-specific rates on an annual basis per 100,000 population in specified group; age-adjusted rates per 100,000 U.S. standard population; see [Technical notes](#). Because of rounding of estimates, figures may not add to totals. For method of computation and information on standard errors of the estimates, see [Technical notes](#)]

Age, race, and sex	November				January–November				12 months ending with November			
	1996		1995		1996		1995		1996		1995	
	Number	Rate	Number	Rate	Number	Rate	Number	Rate	Number	Rate	Number	Rate
<b>White male</b>												
All ages . . . . .	81,550	918.2	80,190	909.2	907,510	920.0	911,580	931.8	991,980	920.7	992,930	928.8
Under 1 year . . . . .	1,250	65.0	1,330	68.9	9,330	<sup>2</sup> 662.3	9,940	<sup>2</sup> 704.4	10,390	<sup>2</sup> 673.8	10,930	<sup>2</sup> 706.5
1–4 years . . . . .					2,170	37.8	2,600	44.5	2,380	37.8	2,800	43.9
5–14 years . . . . .					3,410	23.8	3,330	23.4	3,780	24.1	3,610	23.3
15–24 years . . . . .	1,370	111.8	1,680	139.0	16,210	120.4	17,090	126.9	17,610	120.0	18,700	127.1
25–34 years . . . . .	2,150	159.3	2,190	159.1	24,500	161.3	27,920	180.9	26,880	161.8	30,540	181.0
35–44 years . . . . .	3,990	267.1	4,150	282.6	43,860	265.7	46,710	288.0	48,330	268.0	50,620	285.5
45–54 years . . . . .	5,920	521.6	5,560	507.2	63,710	511.7	64,240	536.1	69,840	514.2	69,810	533.6
55–64 years . . . . .	9,740	1,333.5	9,450	1,306.1	105,450	1,301.3	105,940	1,319.2	115,010	1,299.4	115,350	1,314.8
65–74 years . . . . .	19,020	3,137.4	18,790	3,066.1	214,960	3,161.6	218,210	3,202.6	234,900	3,162.4	237,440	3,188.8
75–84 years . . . . .	23,990	7,093.5	23,440	7,147.5	266,460	7,159.8	264,420	7,360.9	290,620	7,145.8	288,590	7,354.5
85 years and over . . . . .	14,080	17,636.1	13,540	17,694.6	156,990	18,051.1	150,660	18,023.7	171,760	18,080.0	164,000	17,962.8
Not stated . . . . .	40	...	60	...	450	...	520	...	470	...	540	...
Age-adjusted rate <sup>3</sup> . . . . .	...	591.0	...	592.8	...	593.4	...	611.6	...	594.0	...	609.7
<b>White female</b>												
All ages . . . . .	82,270	896.6	80,000	873.9	907,500	887.1	901,310	887.1	992,180	887.7	983,490	885.7
Under 1 year . . . . .	970	53.1	1,160	63.4	7,500	<sup>2</sup> 562.7	7,820	<sup>2</sup> 582.9	8,120	<sup>2</sup> 555.4	8,490	<sup>2</sup> 577.9
1–4 years . . . . .					1,510	27.6	1,700	30.6	1,640	27.4	1,830	30.2
5–14 years . . . . .					2,380	17.5	2,130	15.7	2,640	17.7	2,370	16.1
15–24 years . . . . .	450	39.3	460	40.1	5,670	44.4	5,530	43.2	6,170	44.3	5,980	42.8
25–34 years . . . . .	800	60.6	850	63.0	9,480	63.5	9,720	64.2	10,290	63.1	10,680	64.6
35–44 years . . . . .	1,990	134.6	1,810	124.0	20,050	122.2	19,890	123.3	21,950	122.5	21,600	122.5
45–54 years . . . . .	3,190	275.2	3,170	282.2	36,010	282.4	36,650	298.4	38,960	279.9	39,910	297.5
55–64 years . . . . .	6,140	780.7	5,990	766.9	68,430	783.1	68,290	786.8	74,790	783.6	74,490	785.5
65–74 years . . . . .	14,690	1,980.7	13,930	1,847.4	163,570	1,960.7	160,590	1,909.2	178,270	1,955.6	175,520	1,909.7
75–84 years . . . . .	24,410	4,712.8	24,400	4,782.8	273,350	4,763.4	271,790	4,819.0	298,670	4,763.5	297,240	4,823.8
85 years and over . . . . .	29,620	14,636.0	28,210	14,241.6	319,350	14,302.8	316,990	14,546.4	350,460	14,369.0	345,150	14,496.0
Not stated . . . . .	10	...	10	...	190	...	230	...	220	...	230	...
Age-adjusted rate <sup>3</sup> . . . . .	...	361.6	...	356.4	...	361.9	...	363.5	...	361.5	...	363.1
<b>Black</b>												
All ages . . . . .	23,960	868.3	24,030	877.6	260,060	846.4	263,530	869.7	283,570	844.6	286,160	864.2
Under 1 year . . . . .	1,010	137.5	1,120	151.0	8,110	<sup>2</sup> 1,425.7	8,230	<sup>2</sup> 1,441.4	8,830	<sup>2</sup> 1,401.6	9,030	<sup>2</sup> 1,444.8
1–4 years . . . . .					1,530	68.5	1,720	75.2	1,660	67.4	1,900	76.4
5–14 years . . . . .					1,800	33.2	1,650	30.2	1,920	32.0	1,850	31.4
15–24 years . . . . .	680	150.5	650	144.5	7,990	159.3	7,960	159.5	8,640	157.8	8,830	162.0
25–34 years . . . . .	1,010	228.0	1,580	355.4	12,660	255.5	14,680	296.2	13,840	255.7	15,770	290.8
35–44 years . . . . .	1,860	423.0	2,410	560.6	22,330	460.3	24,990	527.7	24,470	462.1	26,980	521.3
45–54 years . . . . .	2,660	934.4	2,510	923.4	27,460	882.4	27,220	921.7	29,780	877.2	29,570	917.2
55–64 years . . . . .	3,210	1,805.5	3,110	1,769.8	35,800	1,816.9	35,770	1,840.5	39,000	1,811.4	38,840	1,829.5
65–74 years . . . . .	5,230	3,895.4	4,280	3,208.5	51,420	3,444.6	53,030	3,590.6	56,070	3,437.8	57,430	3,558.2
75–84 years . . . . .	5,010	7,165.5	4,740	6,914.9	53,580	6,949.1	52,380	6,920.5	58,620	6,953.7	56,890	6,879.1
85 years and over . . . . .	3,270	13,756.5	3,630	15,829.7	37,130	14,376.7	35,730	14,222.9	40,480	14,354.6	38,860	14,182.5
Not stated . . . . .	20	...	...	...	240	...	180	...	260	...	200	...
Age-adjusted rate <sup>3</sup> . . . . .	...	763.3	...	766.2	...	743.1	...	772.0	...	741.1	...	767.2
<b>Black male</b>												
All ages . . . . .	12,510	955.0	13,520	1,040.8	138,820	952.2	141,920	987.4	151,060	948.2	154,020	980.7
Under 1 year . . . . .	500	134.2	620	164.9	4,330	<sup>2</sup> 1,507.2	4,310	<sup>2</sup> 1,482.5	4,780	<sup>2</sup> 1,498.4	4,760	<sup>2</sup> 1,501.6
1–4 years . . . . .					760	66.7	870	75.4	820	65.7	960	76.1
5–14 years . . . . .					1,070	38.4	1,070	39.1	1,140	37.4	1,190	39.8
15–24 years . . . . .	560	247.0	570	253.3	6,410	255.7	6,340	254.8	6,920	252.6	7,030	258.2
25–34 years . . . . .	650	309.5	1,110	527.5	8,670	369.8	10,190	433.6	9,500	370.7	11,020	429.6
35–44 years . . . . .	1,250	607.8	1,700	847.3	14,640	645.5	16,710	755.3	15,950	645.0	18,010	745.8
45–54 years . . . . .	1,700	1,317.7	1,540	1,249.9	17,220	1,220.6	16,910	1,261.4	18,660	1,213.3	18,360	1,256.7
55–64 years . . . . .	1,780	2,307.8	1,870	2,446.4	20,900	2,439.4	20,270	2,401.4	22,630	2,417.7	21,980	2,383.9
65–74 years . . . . .	2,870	5,111.5	2,610	4,690.5	27,680	4,440.7	28,680	4,664.5	30,160	4,428.8	31,000	4,613.1
75–84 years . . . . .	2,160	8,392.4	2,170	8,656.3	24,670	8,731.4	24,070	8,740.9	26,930	8,715.2	26,140	8,684.4
85 years and over . . . . .	1,020	14,640.0	1,340	20,127.6	12,320	16,578.6	12,420	17,075.1	13,400	16,543.2	13,490	17,075.9
Not stated . . . . .	20	...	...	...	150	...	90	...	160	...	90	...
Age-adjusted rate <sup>3</sup> . . . . .	...	986.1	...	1,063.7	...	982.0	...	1,021.9	...	977.5	...	1,015.5

See footnotes at end of table.

**Table 5. Provisional number of deaths and death rates, by age, race, and sex, and age-adjusted death rates by race and sex: United States, November 1995 and 1996, cumulative figures 1995 and 1996, and 12 months ending with November 1995 and 1996—Con.**

[Data are provisional, estimated from a 10-percent sample of deaths. Age-specific rates on an annual basis per 100,000 population in specified group; age-adjusted rates per 100,000 U.S. standard population; see [Technical notes](#). Because of rounding of estimates, figures may not add to totals. For method of computation and information on standard errors of the estimates, see [Technical notes](#)]

Age, race, and sex	November				January–November				12 months ending with November			
	1996		1995		1996		1995		1996		1995	
	Number	Rate	Number	Rate	Number	Rate	Number	Rate	Number	Rate	Number	Rate
Black female												
All ages . . . . .	11,450	790.0	10,500	729.7	121,240	751.0	121,620	763.5	132,500	751.0	132,130	759.0
Under 1 year . . . . .	} 520	143.8	490	134.1	3,780	<sup>2</sup> 1,356.2	3,920	<sup>2</sup> 1,392.2	4,040	<sup>2</sup> 1,299.0	4,270	<sup>2</sup> 1,386.4
1–4 years . . . . .					770	69.5	860	76.7	840	69.2	950	77.5
5–14 years . . . . .					730	27.0	580	21.8	780	26.4	660	22.7
15–24 years . . . . .					130	57.7	80	*	1,580	63.9	1,620	65.4
25–34 years . . . . .	360	154.5	460	196.5	3,990	152.6	4,490	172.0	4,340	152.3	4,750	166.2
35–44 years . . . . .	610	260.7	710	309.7	7,700	297.9	8,280	328.2	8,520	301.9	8,970	324.9
45–54 years . . . . .	960	616.7	970	652.7	10,250	602.1	10,310	637.6	11,120	598.8	11,210	635.8
55–64 years . . . . .	1,430	1,420.7	1,240	1,248.9	14,900	1,336.6	15,500	1,410.4	16,370	1,345.1	16,860	1,403.8
65–74 years . . . . .	2,360	3,021.2	1,670	2,147.8	23,730	2,728.9	24,350	2,824.8	25,900	2,726.3	26,440	2,806.8
75–84 years . . . . .	2,850	6,450.8	2,570	5,910.8	28,910	5,917.2	28,310	5,874.1	31,690	5,934.5	30,750	5,846.0
85 years and over . . . .	2,250	13,390.2	2,300	14,133.0	24,810	13,502.2	23,310	13,070.7	27,080	13,472.6	25,370	13,010.3
Not stated . . . . .	–	...	–	...	90	...	90	...	100	...	110	...
Age-adjusted rate <sup>3</sup> . . . .	...	588.4	...	534.6	...	557.9	...	578.5	...	557.6	...	575.1

... Category not applicable.

– Quantity zero.

\* Figure does not meet standards of reliability or precision; see [Technical notes](#).

<sup>1</sup>Includes races other than white and black.

<sup>2</sup>Death rates for "Under 1 year" (based on population estimates) differ from infant mortality rates (based on live births); see [table 9](#) for infant mortality rates.

<sup>3</sup>For method of computation, see [Technical notes](#).

NOTES: Figures include all revisions received from the States. Cumulative and 12-month figures for the current year reflect revisions received for previous months, and figures for earlier years may differ from those previously published.

**Table 6. Provisional number of deaths and death rates for 72 selected causes, Human immunodeficiency virus infection, and Alzheimer's disease: United States, November 1995 and 1996, cumulative figures 1995 and 1996, and 12 months ending with November 1995 and 1996**

[Data are provisional, estimated from a 10-percent sample of deaths. Rates on an annual basis per 100,000 estimated population. Because of rounding of estimates, figures may not add to totals. For method of computation and information on standard errors of the estimates, see [Technical notes](#). For explanation of asterisks preceding cause-of-death categories, see [Technical notes](#)]

Cause of death (Based on the Ninth Revision, International Classification of Diseases, 1975)	November		November		January–November		January–November		12 months ending with November		12 months ending with November	
	1996		1995		1996		1995		1996		1995	
	Number	Rate	Number	Rate	Number	Rate	Number	Rate	Number	Rate	Number	Rate
All causes	191,000	877.8	188,000	866.7	2,111,000	870.5	2,112,000	879.0	2,308,000	871.0	2,302,000	876.6
Shigellosis and amebiasis	—	*	—	*	—	*	—	*	—	*	—	*
Certain other intestinal infections	20	*	30	*	730	0.3	590	0.2	780	0.3	640	0.2
Tuberculosis	130	0.6	100	*	920	0.4	1,220	0.5	1,070	0.4	1,350	0.5
Tuberculosis of respiratory system	110	0.5	80	*	730	0.3	950	0.4	850	0.3	1,050	0.4
Other tuberculosis	20	*	20	*	190	0.1	270	0.1	220	0.1	300	0.1
Whooping cough	—	*	—	*	10	*	10	*	10	*	10	*
Streptococcal sore throat, scarlatina, and erysipelas	—	*	—	*	—	*	10	*	—	*	10	*
Meningococcal infection	20	*	20	*	250	0.1	300	0.1	250	0.1	340	0.1
Septicemia	1,860	8.5	1,690	7.8	19,680	8.1	19,510	8.1	21,360	8.1	21,080	8.0
Acute poliomyelitis	—	*	—	*	—	*	—	*	—	*	—	*
Measles	—	*	—	*	—	*	—	*	—	*	—	*
Viral hepatitis	380	1.7	320	1.5	3,500	1.4	3,220	1.3	3,800	1.4	3,490	1.3
Syphilis	—	*	—	*	30	*	130	0.0	30	*	130	0.0
All other infectious and parasitic diseases <sup>1</sup>	2,960	13.6	4,010	18.5	35,290	14.5	45,360	18.9	38,940	14.7	49,260	18.8
Malignant neoplasms, including neoplasms of lymphatic and hematopoietic tissues	45,940	210.6	43,470	200.6	497,110	204.9	492,200	204.8	541,350	204.3	536,330	204.3
Malignant neoplasms of lip, oral cavity, and pharynx	630	2.9	710	3.3	7,150	2.9	7,360	3.1	7,770	2.9	7,970	3.0
Malignant neoplasms of digestive organs and peritoneum	11,010	50.5	10,210	47.1	116,330	48.0	114,930	47.8	126,650	47.8	125,160	47.7
Malignant neoplasms of respiratory and intrathoracic organs	13,350	61.2	12,650	58.4	145,310	59.9	142,010	59.1	158,240	59.7	154,760	58.9
Malignant neoplasm of breast	3,320	15.2	3,510	16.2	40,180	16.6	40,360	16.8	43,830	16.5	44,210	16.8
Malignant neoplasms of genital organs	5,610	25.7	4,820	22.2	55,300	22.8	55,840	23.2	60,260	22.7	60,940	23.2
Malignant neoplasms of urinary organs	2,120	9.7	1,900	8.8	21,170	8.7	21,250	8.8	23,000	8.7	23,100	8.8
Malignant neoplasms of all other and unspecified sites	5,460	25.0	5,130	23.7	60,670	25.0	60,260	25.1	66,000	24.9	65,390	24.9
Leukemia	1,590	7.3	1,570	7.2	18,770	7.7	17,990	7.5	20,410	7.7	19,620	7.5
Other malignant neoplasms of lymphatic and hematopoietic tissues	2,850	13.1	2,970	13.7	32,240	13.3	32,200	13.4	35,190	13.3	35,190	13.4
Benign neoplasms, carcinoma in situ, and neoplasms of uncertain behavior and of unspecified nature	580	2.6	560	2.6	6,960	2.9	7,680	3.2	7,670	2.9	8,300	3.2
Diabetes mellitus	5,500	25.2	4,630	21.4	56,030	23.1	53,610	22.3	60,760	22.9	58,450	22.3
Nutritional deficiencies	210	1.0	330	1.5	3,490	1.4	3,420	1.4	3,900	1.5	3,640	1.4
Anemias	410	1.9	420	1.9	3,660	1.5	3,850	1.6	4,090	1.5	4,210	1.6
Meningitis	40	*	60	*	540	0.2	740	0.3	580	0.2	890	0.3
Major cardiovascular diseases	77,590	355.7	76,670	353.8	859,690	354.5	860,760	358.3	941,440	355.3	938,750	357.5
Diseases of heart	59,350	272.1	59,270	273.5	665,540	274.4	667,840	278.0	728,580	275.0	728,130	277.3
Rheumatic fever and rheumatic heart disease	410	1.9	340	1.6	4,540	1.9	4,640	1.9	4,940	1.9	5,130	2.0
Hypertensive heart disease	1,910	8.7	2,000	9.2	23,860	9.8	22,420	9.3	25,930	9.8	24,330	9.3
Hypertensive heart and renal disease	200	0.9	220	1.0	2,000	0.8	2,120	0.9	2,220	0.8	2,370	0.9
Ischemic heart disease	38,610	177.0	39,190	180.8	431,310	177.8	436,530	181.7	472,190	178.2	475,970	181.3
Acute myocardial infarction	17,390	79.7	17,790	82.1	195,320	80.5	199,050	82.8	213,470	80.6	217,390	82.8
Other acute and subacute forms of ischemic heart disease	140	0.6	220	1.0	2,330	1.0	2,320	1.0	2,600	1.0	2,590	1.0
Angina pectoris	40	*	90	*	640	0.3	680	0.3	690	0.3	760	0.3
Old myocardial infarction and other forms of chronic ischemic heart disease	21,050	96.5	21,090	97.3	233,020	96.1	234,480	97.6	255,430	96.4	255,220	97.2
Other diseases of endocardium	1,590	7.3	1,060	4.9	15,060	6.2	14,000	5.8	16,580	6.3	15,310	5.8
All other forms of heart disease	16,630	76.2	16,450	75.9	188,770	77.8	188,120	78.3	206,710	78.0	205,010	78.1
Hypertension with or without renal disease	1,080	4.9	910	4.2	11,250	4.6	11,400	4.7	12,330	4.7	12,290	4.7
Cerebrovascular diseases	13,790	63.2	12,970	59.8	144,640	59.6	143,040	59.5	158,350	59.8	156,500	59.6
Intracerebral and other intracranial hemorrhage	2,290	10.5	1,960	9.0	21,340	8.8	19,720	8.2	23,320	8.8	21,560	8.2
Cerebral thrombosis and unspecified occlusion of cerebral arteries	1,290	5.9	1,050	4.8	11,410	4.7	12,240	5.1	12,570	4.7	13,480	5.1
Cerebral embolism	150	0.7	30	*	710	0.3	580	0.2	770	0.3	680	0.3
All other and late effects of cerebrovascular diseases	10,060	46.1	9,930	45.8	111,170	45.8	110,500	46.0	121,690	45.9	120,780	46.0

See footnotes at end of table.

**Table 6. Provisional number of deaths and death rates for 72 selected causes, Human immunodeficiency virus infection, and Alzheimer's disease: United States, November 1995 and 1996, cumulative figures 1995 and 1996, and 12 months ending with November 1995 and 1996—Con.**

[Data are provisional, estimated from a 10-percent sample of deaths. Rates on an annual basis per 100,000 estimated population. Because of rounding of estimates, figures may not add to totals. For method of computation and information on standard errors of the estimates, see [Technical notes](#). For explanation of asterisks preceding cause-of-death categories, see [Technical notes](#)]

Cause of death (Based on the Ninth Revision, International Classification of Diseases, 1975)	November				January–November				12 months ending with November				
	1996		1995		1996		1995		1996		1995		
	Number	Rate	Number	Rate	Number	Rate	Number	Rate	Number	Rate	Number	Rate	
<b>Cerebrovascular diseases—Con.</b>													
Atherosclerosis . . . . .	.440	1,310	6.0	1,440	6.6	14,290	5.9	14,790	6.1	15,890	6.0	16,170	6.2
Other diseases of arteries, arterioles, and capillaries . . . . .	.441–448	2,050	9.4	2,080	9.6	23,980	9.9	23,700	9.9	26,290	9.9	25,660	9.8
<b>Acute bronchitis and bronchiolitis . . . . .</b>	.466	—	*	60	*	340	0.1	520	0.2	360	0.1	550	0.2
Pneumonia and influenza . . . . .	.480–487	6,260	28.7	6,570	30.3	73,310	30.2	72,970	30.4	80,510	30.4	79,630	30.3
Pneumonia . . . . .	.480–486	6,210	28.5	6,540	30.2	72,810	30.0	72,530	30.2	79,970	30.2	79,180	30.2
Influenza . . . . .	.487	40	*	30	*	500	0.2	450	0.2	530	0.2	450	0.2
<b>Chronic obstructive pulmonary diseases and allied conditions . . . . .</b>	.490–496	8,150	37.4	7,430	34.3	96,090	39.6	95,080	39.6	104,560	39.5	102,940	39.2
Bronchitis, chronic and unspecified . . . . .	.490–491	190	0.9	210	1.0	2,730	1.1	2,730	1.1	2,980	1.1	3,110	1.2
Emphysema . . . . .	.492	1,270	5.8	1,260	5.8	15,110	6.2	16,170	6.7	16,360	6.2	17,520	6.7
Asthma . . . . .	.493	410	1.9	460	2.1	4,680	1.9	5,050	2.1	5,150	1.9	5,360	2.0
Other chronic obstructive pulmonary diseases and allied conditions . . . . .	.494–496	6,280	28.8	5,490	25.3	73,560	30.3	71,130	29.6	80,070	30.2	76,960	29.3
Ulcer of stomach and duodenum . . . . .	.531–533	280	1.3	400	1.8	4,400	1.8	5,450	2.3	4,840	1.8	5,840	2.2
Appendicitis . . . . .	.540–543	50	*	30	*	430	0.2	390	0.2	440	0.2	420	0.2
Hernia of abdominal cavity and intestinal obstruction without mention of hernia . . . . .	.550–553,560	540	2.5	470	2.2	5,890	2.4	5,520	2.3	6,330	2.4	6,060	2.3
Chronic liver disease and cirrhosis . . . . .	.571	2,170	9.9	2,020	9.3	22,340	9.2	23,180	9.6	24,250	9.2	25,650	9.8
Cholelithiasis and other disorders of gallbladder . . . . .	.574–575	180	0.8	230	1.1	2,420	1.0	2,440	1.0	2,680	1.0	2,680	1.0
<b>Nephritis and nephrotic syndrome, and nephrosis . . . . .</b>	.580–589	2,430	11.1	1,950	9.0	24,420	10.1	23,260	9.7	26,790	10.1	25,460	9.7
Acute glomerulonephritis and nephrotic syndrome . . . . .	.580–581	20	*	30	*	190	0.1	260	0.1	210	0.1	270	0.1
Chronic glomerulonephritis, nephritis and nephropathy, not specified as acute or chronic, and renal sclerosis, unspecified . . . . .	.582–583,587	110	0.5	160	0.7	1,560	0.6	1,190	0.5	1,710	0.6	1,330	0.5
Renal failure, disorders resulting from impaired renal function, and small kidney of unknown cause . . . . .	.584–586,588–589	2,300	10.5	1,760	8.1	22,670	9.3	21,810	9.1	24,870	9.4	23,860	9.1
Infections of kidney . . . . .	.590	70	*	30	*	820	0.3	690	0.3	860	0.3	750	0.3
Hyperplasia of prostate . . . . .	.600	30	*	10	*	380	0.2	390	0.2	420	0.2	410	0.2
<b>Complications of pregnancy, childbirth, and the puerperium . . . . .</b>	.630–676	20	*	50	*	250	0.1	300	0.1	270	0.1	300	0.1
Pregnancy with abortive outcome . . . . .	.630–638	—	*	10	*	20	*	20	*	20	*	20	*
Other complications of pregnancy, childbirth, and the puerperium . . . . .	.640–676	20	*	40	*	230	0.1	280	0.1	250	0.1	280	0.1
<b>Congenital anomalies . . . . .</b>	.740–759	730	3.3	1,020	4.7	10,610	4.4	10,540	4.4	11,620	4.4	11,560	4.4
<b>Certain conditions originating in the perinatal period . . . . .</b>	.760–779	1,190	5.5	1,030	4.7	11,890	4.9	12,370	5.1	12,930	4.9	13,630	5.2
Birth trauma, intrauterine hypoxia, birth asphyxia, and respiratory distress syndrome . . . . .	.767–769	210	1.0	170	0.8	1,920	0.8	1,840	0.8	2,070	0.8	2,000	0.8
Other conditions originating in the perinatal period . . . . .	.760–766,770–779	980	4.5	870	4.0	9,970	4.1	10,530	4.4	10,860	4.1	11,630	4.4
Symptoms, signs, and ill-defined conditions . . . . .	.780–799	3,300	15.1	3,720	17.2	37,890	15.6	38,420	16.0	41,690	15.7	41,480	15.8
<b>All other diseases . . . . .</b>	.Residual	18,430	84.5	17,950	82.8	199,330	82.2	194,290	80.9	218,480	82.5	211,870	80.7
<b>Accidents and adverse effects . . . . .</b>	.E800–E949	7,640	35.0	7,550	34.8	83,120	34.3	82,530	34.3	90,380	34.1	89,960	34.3
Motor vehicle accidents . . . . .	.E810–E825	3,830	17.6	3,790	17.5	39,950	16.5	40,320	16.8	43,410	16.4	43,940	16.7
All other accidents and adverse effects . . . . .	.E800–E807,E826–E949	3,810	17.5	3,750	17.3	43,160	17.8	42,210	17.6	46,970	17.7	46,020	17.5
Suicide . . . . .	.E950–E959	2,460	11.3	2,400	11.1	27,810	11.5	27,740	11.5	29,900	11.3	30,350	11.6
Homicide and legal intervention . . . . .	.E960–E978	1,760	8.1	1,960	9.0	19,360	8.0	20,570	8.6	21,170	8.0	22,330	8.5
<b>All other external causes . . . . .</b>	.E980–E999	170	0.8	90	*	2,180	0.9	2,090	0.9	2,370	0.9	2,330	0.9
<b>Human immunodeficiency virus infection<sup>2</sup> . . . . .</b>	*042–*044	2,250	10.3	3,520	16.2	29,280	12.1	39,260	16.3	32,390	12.2	42,690	16.3
<b>Alzheimer's disease . . . . .</b>	.331.0	1,870	8.6	1,650	7.6	19,820	8.2	18,410	7.7	21,880	8.3	20,300	7.7

— Quantity zero. \* Figure does not meet standards of reliability or precision; see [Technical notes](#). 0.0 Quantity more than zero, but less than 0.05.

<sup>1</sup>Includes data for deaths due to Human immunodeficiency virus infection (categories \*042–\*044) shown separately below; see [Technical notes](#).

<sup>2</sup>Included in All other infectious and parasitic diseases shown above.

NOTES: Figures include all revisions received from the States. Cumulative and 12-month figures for the current year reflect revisions received for previous months, and figures for earlier years may differ from those previously published.

**Table 7. Provisional number of deaths and death rates for 16 selected subcategories of Malignant neoplasms, including neoplasms of lymphatic and hematopoietic tissues: United States, November 1995 and 1996, cumulative figures 1995 and 1996, and 12 months ending with November 1995 and 1996**

[Data are provisional, estimated from a 10-percent sample of deaths. Rates on an annual basis per 100,000 estimated population. Because of rounding of estimates, figures may not add to totals. For method of computation and information on standard errors of the estimates, see [Technical notes](#)]

Cause of death (Based on the Ninth Revision, International Classification of Diseases, 1975)	November				January–November				12 months ending with November			
	1996		1995		1996		1995		1996		1995	
	Number	Rate	Number	Rate	Number	Rate	Number	Rate	Number	Rate	Number	Rate
Malignant neoplasms, including neoplasms of lymphatic and hematopoietic tissues <sup>1</sup> . . . . .140–208	45,940	210.6	43,470	200.6	497,110	204.9	492,200	204.8	541,350	204.3	536,330	204.3
Malignant neoplasm of esophagus . . . . .150	880	4.0	790	3.6	10,240	4.2	9,590	4.0	11,000	4.2	10,420	4.0
Malignant neoplasm of stomach . . . . .151	1,390	6.4	1,140	5.3	12,400	5.1	12,770	5.3	13,440	5.1	13,890	5.3
Malignant neoplasms of colon, rectum, rectosigmoid junction, and anus . . . . .153,154	4,860	22.3	4,660	21.5	52,520	21.6	51,390	21.4	56,960	21.5	56,100	21.4
Malignant neoplasm of pancreas . . . . .157	2,330	10.7	2,000	9.2	25,140	10.4	24,990	10.4	27,520	10.4	27,190	10.4
Malignant neoplasms of trachea, bronchus, and lung . . . . .162	12,900	59.1	12,190	56.2	140,500	57.9	137,170	57.1	152,990	57.7	149,430	56.9
Malignant melanoma of skin . . . . .172	550	2.5	550	2.5	6,460	2.7	6,560	2.7	6,930	2.6	7,030	2.7
Malignant neoplasm of cervix uteri . . . . .180	430	2.0	440	2.0	4,120	1.7	4,350	1.8	4,540	1.7	4,730	1.8
Malignant neoplasms of body of uterus and of uterus, part unspecified . . . . .179,182	440	2.0	570	2.6	5,280	2.2	5,580	2.3	5,810	2.2	6,020	2.3
Malignant neoplasm of ovary . . . . .183.0	1,220	5.6	1,020	4.7	12,530	5.2	12,440	5.2	13,680	5.2	13,610	5.2
Malignant neoplasm of prostate . . . . .185	3,340	15.3	2,620	12.1	31,580	13.0	31,890	13.3	34,230	12.9	34,840	13.3
Malignant neoplasm of bladder . . . . .188	920	4.2	1,010	4.7	10,180	4.2	10,650	4.4	11,060	4.2	11,520	4.4
Malignant neoplasms of kidney and other and unspecified urinary organs . . . . .189	1,210	5.5	880	4.1	10,990	4.5	10,600	4.4	11,940	4.5	11,580	4.4
Malignant neoplasms of brain and other and unspecified parts of nervous system . . . . .191,192	1,010	4.6	940	4.3	10,640	4.4	10,540	4.4	11,640	4.4	11,600	4.4
Hodgkin's disease . . . . .201	150	0.7	130	0.6	1,360	0.6	1,430	0.6	1,460	0.6	1,560	0.6
Malignant lymphoma other than Hodgkin's disease . . . . .200,202	1,810	8.3	2,070	9.6	21,160	8.7	21,330	8.9	23,090	8.7	23,300	8.9
Multiple myeloma and other immunoproliferative neoplasms . . . . .203	890	4.1	770	3.6	9,720	4.0	9,440	3.9	10,640	4.0	10,330	3.9

<sup>1</sup>Includes figures for subcategories not shown below.

NOTES: Figures include all revisions received from the States. Cumulative and 12-month figures for the current year reflect revisions received for previous months, and figures for earlier years may differ from those previously published.

**Table 8. Provisional number of deaths and death rates for firearm mortality: United States, November 1995 and 1996, cumulative figures 1995 and 1996, and 12 months ending with November 1995 and 1996**

[Data are provisional, estimated from a 10-percent sample of deaths. Rates on an annual basis per 100,000 estimated population. Because of rounding of estimates, figures may not add to totals. For method of computation and information on standard errors of the estimates, see [Technical notes](#)]

Cause of death (Based on the Ninth Revision, International Classification of Diseases, 1975)	November				January–November				12 months ending with November			
	1996		1995		1996		1995		1996		1995	
	Number	Rate	Number	Rate	Number	Rate	Number	Rate	Number	Rate	Number	Rate
Injury by firearms. . . . .E922,E955.0–E955.4,E965.0–965.4,E970,E985.0–E985.4	2,760	12.7	3,140	14.5	31,700	13.1	32,620	13.6	34,630	13.1	35,520	13.5
Accident caused by firearm missile . . . . .E922	150	0.7	140	0.6	1,180	0.5	1,170	0.5	1,370	0.5	1,360	0.5
Suicide by firearms . . . . .E955.0–E955.4	1,440	6.6	1,500	6.9	16,810	6.9	16,670	6.9	18,120	6.8	18,050	6.9
Homicide and legal intervention by firearms. . . . .E965.0–E965.4,E970	1,160	5.3	1,500	6.9	13,510	5.6	14,550	6.0	14,920	5.6	15,830	6.0
Injury by firearms, undetermined whether accidentally or purposely inflicted. . . . .E985.0–E985.4	10	*	10	*	210	0.1	230	0.1	230	0.1	280	0.1

\* Figure does not meet standards of reliability or precision; see [Technical notes](#).

NOTES: Figures include all revisions received from the States. Cumulative and 12-month figures for the current year reflect revisions received for previous months, and figures for earlier years may differ from those previously published.

**Table 9. Provisional number of deaths under 1 year and infant mortality rates, by age and for 10 selected causes: United States, November 1995 and 1996, cumulative figures 1995 and 1996, and 12 months ending with November 1995 and 1996**

[Data are provisional, estimated from a 10-percent sample of deaths. Rates on an annual basis per 100,000 live births. Because of rounding of estimates, figures may not add to totals. For method of computation and information on standard errors of the estimates, see [Technical notes](#)]

Age and cause of death (Based on the Ninth Revision, International Classification of Diseases, 1975)	November				January–November				12 months ending with November			
	1996		1995		1996		1995		1996		1995	
	Number	Rate	Number	Rate	Number	Rate	Number	Rate	Number	Rate	Number	Rate
Total, under 1 year . . . . .	2,300	716.8	2,300	751.2	25,800	725.4	26,900	749.7	28,200	727.2	29,400	755.2
Under 28 days . . . . .	1,470	466.9	1,440	461.9	17,140	481.6	17,150	478.4	18,660	480.4	18,820	483.4
28 days–11 months . . . . .	790	250.9	910	291.9	8,670	243.6	9,670	269.8	9,590	246.9	10,520	270.2
Certain gastrointestinal diseases. . . . .008–009,535,555–558	10	*	20	*	210	5.9	180	5.0	220	5.7	190	4.9
Pneumonia and influenza. . . . .480–487	30	*	30	*	280	7.9	310	8.6	320	8.2	360	9.2
Congenital anomalies . . . . .740–759	380	120.7	510	163.6	5,990	168.3	5,730	159.8	6,420	165.3	6,300	161.8
Disorders relating to short gestation and unspecified low birthweight . . . . .765	280	88.9	190	60.9	3,350	94.1	3,330	92.9	3,580	92.2	3,680	94.5
Birth trauma . . . . .767	10	*	20	*	160	4.5	160	4.5	190	4.9	180	4.6
Intrauterine hypoxia and birth asphyxia . . . . .768	50	*	70	*	500	14.0	460	12.8	500	12.9	500	12.8
Respiratory distress syndrome. . . . .769	150	47.6	60	*	1,240	34.8	1,120	31.2	1,340	34.5	1,210	31.1
Other conditions originating in the perinatal period. . . . .760–764,766,770–779	700	222.3	680	218.1	6,540	183.8	7,090	197.8	7,200	185.3	7,800	200.3
Sudden infant death syndrome . . . . .798.0	190	60.3	250	80.2	2,380	66.9	2,610	72.8	2,680	69.0	2,830	72.7
All other causes . . . . .Residual	460	146.1	520	166.8	5,180	145.6	5,820	162.4	5,810	149.6	6,280	161.3

\* Figure does not meet standards of reliability or precision; see [Technical notes](#).

NOTES: Figures include all revisions received from the States. Cumulative and 12-month figures for the current year reflect revisions received for previous months, and figures for earlier years may differ from those previously published.



## Technical notes

### Nature and sources of data

Data in this report are provisional unless otherwise specified and include only events occurring within the United States (50 States and the District of Columbia). Mortality data exclude fetal deaths. Data for the Commonwealth of Puerto Rico are not included in the U.S. totals.

Birth, death, and infant death figures in [tables 2](#) and [4](#) for each State are estimates by State of residence. These estimates are derived by applying adjustment ratios to the actual counts of certificates for all events occurring in the State and received in registration offices during a 1-month period regardless of date of the event. The adjustment ratios for each data year represent the observed relationship between final State occurrence and residence figures for the three most recent years for which final data were available and are expressed as a single ratio for each State. As in previous years, monthly State marriage and divorce figures represent the actual count of all events occurring in the State (State of occurrence) that were received in the registration offices during the 1-month period. Delay in the receipt of certificates in a registration office may result in a low State figure for a given month followed by a high figure for the month(s) in which the delayed records are received. Data for previous months and cumulative data include revised figures received from the States.

Figures for births, deaths, and infant deaths for California in [tables 2](#) and [4](#) contain adjustments for varying lengths of State reporting periods. Figures for Texas for all events shown in [tables 2–4](#) also are adjusted for varying lengths of State reporting periods. The figures for both States are adjusted by the ratio between the number of days in the data month and the number of days in the State reporting period. The adjusted figures are included in the U.S. totals shown elsewhere in this report.

U.S. totals for births, deaths, and infant deaths are based on the State estimates by State of residence and, therefore, in effect, exclude events to nonresidents of the United States. Events to nonresidents of the United States are included in all

marriage and divorce figures. The effect of excluding events to nonresidents from the U.S. totals is small.

Provisional totals for the United States include estimates for State data shown as not available. Provisional totals for births and marriages for the entire United States include adjustments for observed differences between provisional and final monthly figures.

Divorce figures include reported annulments. The monthly national divorce estimate is obtained by multiplying the total for the reporting areas by the ratio observed between the most recent final annual divorce total for the United States and the provisional total for the reporting areas combined.

*Random variation*—Although the counts in this report are not subject to sampling variability (except the Current Mortality Sample), they may be affected by random variation. When the number of events is small and the probability of such an event is small, considerable caution must be observed in interpreting the data. Such infrequent events may be assumed to follow a Poisson probability distribution. For this distribution a simple approximation may be used to estimate the random variation as follows:

If  $N$  is the number of events in the population and  $R$  is the corresponding rate, the chances are 19 in 20 that

$$1. N - 2\sqrt{N} \text{ and } N + 2\sqrt{N}$$

covers the “true” number of events.

$$2. R - 2 \frac{R}{\sqrt{N}} \text{ and } R + 2 \frac{R}{\sqrt{N}}$$

covers the “true” rate.

If the rate  $R_1$  corresponding to  $N_1$  events is compared with the rate  $R_2$  corresponding to  $N_2$  events, the difference between the two rates may be regarded as statistically significant at the 0.05 level if it exceeds

$$2 \sqrt{\frac{R_1^2}{N_1} + \frac{R_2^2}{N_2}}$$

Additional information on random variation in numbers of events, rates, and ratios may be found in the technical appendixes of *Vital Statistics of the United States, 1990, Volumes I and II*.

### Rates

Rates are on an annual basis and, except for infant mortality rates, are per 1,000 or 100,000 estimated population residing in the United States. The populations used for computing these rates are furnished by the U.S. Bureau of the Census. Rates shown in this report beginning with 1992 were computed using populations based on the 1990 Census enumeration comparable to those used for final data. Monthly rates are based on populations estimated for the specific month. Year-to-date rates are averages of monthly rates that have been weighted by the number of days in the corresponding months. Rates for 12-month periods are the sum of events for the period per population estimated at the midpoint of the period.

Infant mortality rates are deaths under 1 year of age for the specified period (monthly, year-to-date, or 12-month period) per 1,000 or 100,000 live births. Births used for computing monthly and year-to-date infant mortality rates are adjusted for monthly variation in the number of births. Births used to compute 12-month rates do not contain this adjustment. Births used for computing infant mortality rates are not corrected for observed differences between provisional and final monthly figures as described earlier in “Nature and sources of data.” Because monthly infant mortality rates are based on relatively few events, they are highly variable. Therefore, comparisons of monthly infant mortality rates should be interpreted cautiously; see “[Random variation](#).”

Age-adjusted death rates are used to compare relative mortality risks across groups and over time. However, they should be viewed as constructs or indexes rather than as direct or actual measures of mortality risk. Statistically, they are weighted averages of the age-specific death rates, where the weights represent the fixed population proportions by age. See chapter 5 of an earlier report (4). The age-adjusted death rates presented in this report were computed by the direct method, that is, by applying age-specific death rates to the U.S. standard million population (5). See also chapter 10 of an earlier report (4). Age groups in [table 5](#) were used to compute the age-adjusted

rates shown in that table. It is important not to compare age-adjusted rates with crude rates.

### Current Mortality Sample

The Current Mortality Sample (CMS) is a 10-percent systematic sample of death certificates drawn each month after the certificates are counted in the State registration offices. Deaths and death rates for the United States by age, race, sex, and cause are estimated based on the sample. Because of the additional time required to select and process the certificates, data based on the CMS are published 1 month after publication of the U.S. and State counts. Complete information concerning the underlying cause of death sometimes is not available when the sample is drawn. As a result estimates based on sample counts for certain causes are biased. Correction for bias is not made in this report.

Estimated numbers of deaths based on the sample were proportionately adjusted to be consistent with estimates based on the count of death certificates received in State registration offices.

*HIV infection*—Beginning with data for 1987, the National Center for Health Statistics introduced categories \*042–\*044 for classifying and coding Human immunodeficiency virus (HIV) infection. The asterisks before the categories indicate that these codes are not part of the *Ninth Revision, International Classification of Diseases*. Deaths classified to these categories are included in All other infectious and parasitic diseases in the List of 72

Selected Causes of Death and are also shown separately at the bottom of table 6.

*Sampling variability*—Because the estimates of deaths and death rates presented in this report with the exception of total deaths and deaths under 1 year are based on a sample of death certificates, they are subject to sampling variability. The estimated relative standard error in the following table is a measure of the sampling error of the estimated number of deaths (or of the estimated death rate) expressed as a percent of the estimate. The first column refers to monthly estimates; the second to annual; cumulative year-to-date totals fall between the two.

**Relative standard errors for estimated numbers of deaths from the Current Mortality Sample expressed as a percent of the estimate**

Estimated number of deaths	Relative standard error of estimate (as percent)	
	170,000 estimated deaths each month	2,000,000 estimated deaths each year
10 . . . . .	94.9	94.9
20 . . . . .	67.1	67.1
50 . . . . .	42.4	42.4
100 . . . . .	30.0	30.0
200 . . . . .	21.2	21.2
500 . . . . .	13.4	13.4
1,000 . . . . .	9.5	9.5
2,000 . . . . .	6.7	6.7
5,000 . . . . .	4.2	4.2
10,000 . . . . .	2.9	3.0
20,000 . . . . .	2.0	2.1
50,000 . . . . .	1.1	1.3
100,000 . . . . .	0.6	0.9
200,000 . . . . .	...	0.6
500,000 . . . . .	...	0.4
1,000,000 . . . . .	...	0.2

The chances are about 2 in 3 that the percent difference between an estimate and the result of a complete count is less than the percent shown. The chances are about 19 in 20 that the percent difference is less than twice the percent shown. A figure based on 100 or fewer estimated deaths has a relative standard error of 30 percent or more and is, therefore, considered unreliable. A rate based on 100 or fewer estimated deaths has been replaced by an asterisk.

Unless otherwise specified comparisons made in the text between death rates based on the CMS were statistically significant at the 0.05 level of significance. Lack of comment in the text about any two rates does not mean that the difference was tested and found not to be significant at this level.

### References

1. U.S. Bureau of the Census. United States population estimates, by age, sex, race, and Hispanic origin: 1990 to 1996. PPL - 57. 1997.
2. Clarke, SC. Advance report of final marriage statistics, 1989 and 1990. Monthly vital statistics report; vol 43 no 12, supp. Hyattsville, Maryland: National Center for Health Statistics. 1995.
3. Clarke, SC. Advance report of final divorce statistics, 1989 and 1990. Monthly vital statistics report; vol 43 no 9, supp. Hyattsville, Maryland: National Center for Health Statistics. 1995.
4. Feinleib M, Zarate AO, eds. Reconsidering age adjustment procedures: Workshop proceedings. National Center for Health Statistics. Vital Health Stat 4(29). 1992.
5. Grove RD, Hetzel AM. Vital statistics rates in the United States, 1940–1960. Public Health Service. Washington: National Center for Health Statistics. 1968.

---

**Suggested citation**

National Center for Health Statistics. Births, marriages, divorces, and deaths for 1996. Monthly vital statistics report; vol 45 no 12. Hyattsville, Maryland: National Center for Health Statistics. 1997.

---

**Copyright information**

All material appearing in this report is in the public domain and may be reproduced or copied without permission; citation as to source, however, is appreciated.

---

**National Center for Health Statistics**

Director  
Edward J. Sondik, Ph.D.

Deputy Director  
Jack R. Anderson

**Division of Vital Statistics**

Director  
Mary Anne Freedman

---

**DEPARTMENT OF  
HEALTH & HUMAN SERVICES**

Centers for Disease Control and Prevention  
National Center for Health Statistics  
6525 Belcrest Road  
Hyattsville, Maryland 20782

FIRST CLASS MAIL  
POSTAGE & FEES PAID  
PHS/NCHS  
PERMIT NO. G-281

---

OFFICIAL BUSINESS  
PENALTY FOR PRIVATE USE, \$300

---

To receive this publication regularly, contact the National Center for Health Statistics by calling 301-436-8500  
E-mail: [nchsquery@nch10a.em.cdc.gov](mailto:nchsquery@nch10a.em.cdc.gov)  
Internet: <http://www.cdc.gov/nchswww/nchshome.htm>

---

DHHS Publication No. (PHS) 97-1120  
7-0560 (7/97)