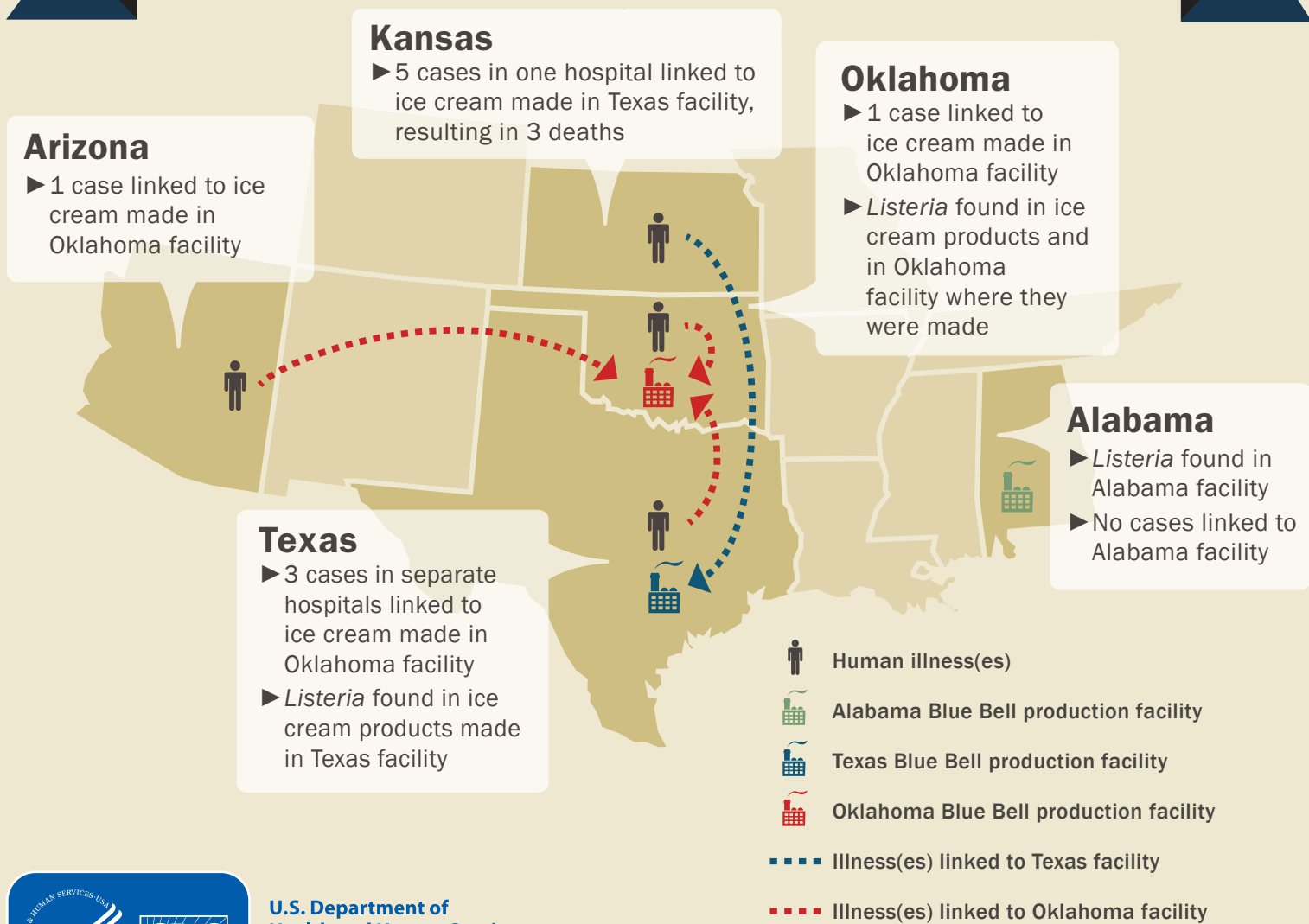


LISTERIA AND BLUE BELL ICE CREAM

Contaminated production facilities and illnesses linked to Blue Bell Creameries

CDC recommends that people not eat, serve, or sell any recalled Blue Bell brand products. This complicated investigation of a listeriosis outbreak involved serious illnesses from 2010 through 2015 linked to two Blue Bell production facilities.



U.S. Department of Health and Human Services
Centers for Disease Control and Prevention

Learn more: www.cdc.gov/listeria/bluebell