

# Multiplex Real-Time Reverse Transcription PCR for Influenza A Virus, Influenza B Virus, and Severe Acute Respiratory Syndrome Coronavirus 2

Bo Shu,<sup>1</sup> Marie K. Kirby,<sup>1</sup> William G. Davis, Christine Warnes, Jimma Liddell, Ji Liu, Kai-Hui Wu, Norman Hassell, Alvaro J. Benitez, Malania M. Wilson, Matthew W. Keller, Benjamin L. Rambo-Martin, Yamundow Camara, Jörn Winter, Rebecca J. Kondor, Bin Zhou, Stacey Spies, Laura E. Rose, Jonas M. Winchell, Brandi M. Limbago, David E. Wentworth,<sup>2</sup> John R. Barnes<sup>2</sup>

Severe acute respiratory syndrome coronavirus 2 (SARS-CoV-2) emerged in late 2019, and the outbreak rapidly evolved into the current coronavirus disease pandemic. SARS-CoV-2 is a respiratory virus that causes symptoms similar to those caused by influenza A and B viruses. On July 2, 2020, the US Food and Drug Administration granted emergency use authorization for in vitro diagnostic use of the Influenza SARS-CoV-2 Multiplex Assay. This assay detects influenza A virus at  $10^{2.0}$ , influenza B virus at  $10^{2.2}$ , and SARS-CoV-2 at  $10^{0.3}$  50% tissue culture or egg infectious dose, or as few as 5 RNA copies/reaction. The simultaneous detection and differentiation of these 3 major pathogens increases overall testing capacity, conserves resources, identifies co-infections, and enables efficient surveillance of influenza viruses and SARS-CoV-2.

An outbreak of pneumonia of unknown etiology in Wuhan, China, was reported to the World Health Organization on December 31, 2019 (1). Researchers determined that the illness, later known as coronavirus disease (COVID-19), was caused by a previously unidentified betacoronavirus, severe acute respiratory syndrome coronavirus 2 (SARS-CoV-2) (2). SARS-CoV-2 rapidly spread around the

world, and on March 11, 2020, the World Health Organization declared a pandemic (3). By January 2021, SARS-CoV-2 had infected >96 million persons and caused >2 million deaths worldwide (4).

The high demand for molecular testing for SARS-CoV-2 has contributed to global shortages of diagnostic resources, including reagents, enzymes used in reverse transcription PCR (RT-PCR), plastic consumables, and staff availability (5,6). Efficient diagnostic tests can reduce strain on the testing system and decrease turnaround time. To improve testing efficiency, we developed the Centers for Disease Control and Prevention (CDC) Influenza SARS-CoV-2 (Flu SC2) Multiplex Assay, which is selective for influenza A and B viruses and SARS-CoV-2. This quadruplex real-time RT-PCR (rRT-PCR) simultaneously detects and distinguishes RNA of influenza A virus, influenza B virus, and SARS-CoV-2 in upper and lower respiratory specimens. To monitor specimen quality control, the assay also detects the *Homo sapiens* (human) RNase P (RP) gene. Because the Flu SC2 Multiplex Assay can test 93 samples in a 96-well plate, this technology improves the throughput of SARS-CoV-2 testing by 3-fold compared with the CDC 2019-nCoV Real-Time RT-PCR Diagnostic Panel (7). The Flu SC2 Multiplex Assay also simultaneously detects influenza A and B viruses, thereby reducing the overall strain on testing facilities, especially during influenza season. Continued testing and surveillance of influenza viruses during the COVID-19 pandemic provide

Author affiliations: Centers for Disease Control and Prevention, Atlanta, Georgia, USA (B. Shu, M.K. Kirby, W.G. Davis, C. Warnes, J. Liddell, J. Liu, K.-H. Wu, N. Hassell, A.J. Benitez, M.M. Wilson, M.W. Keller, B.L. Rambo-Martin, Y. Camara, J. Winter, R.J. Kondor, B. Zhou, S. Spies, L.E. Rose, J.M. Winchell, B.M. Limbago, D.E. Wentworth, J.R. Barnes); Battelle Memorial Institute, Atlanta (W.G. Davis, J. Liddell); Leidos Inc, Atlanta (Y. Camara)

DOI: <https://doi.org/10.3201/eid2707.210462>

<sup>1</sup>These first authors contributed equally to this article.

<sup>2</sup>These senior authors contributed equally to this article.

critical guidance on selection of candidate vaccine strains; these processes also identify antiviral resistance genes and novel influenza viruses that have pandemic potential (8).

We evaluated existing and novel SARS-CoV-2 primers and probes to identify the optimal SC2 assay components for this quadruplex rRT-PCR (Appendix Table 1, <https://wwwnc.cdc.gov/EID/article/27/7/21-0462-App1.pdf>). The SC2 assay components are selective for the 3' region of the SARS-CoV-2 genome from the carboxy terminus of the nucleocapsid (N) gene into the 3' untranslated region (UTR). The primer and probe sequences for the influenza A (InfA), influenza B (InfB), and RP targets are identical to those used in the singleplex assays of the US Food and Drug Administration (FDA)-approved CDC Human Influenza Virus Real-Time RT-PCR Detection and Characterization Panel [510(k) no. K200370] (9). The Flu SC2 Multiplex Assay is selective for the matrix (M) gene segment of the influenza A virus, the nonstructural (NS) gene segment of the influenza B virus, and the human ribonuclease P/MRP subunit P30 gene; the InfA assay is designed for universal detection of all influenza A viruses and InfB assay is designed for universal detection of all influenza B viruses (10–14). The InfA assay was recently updated to address evolutionary changes and reactivity challenges; the updated CDC Human Influenza Virus Real-Time RT-PCR Diagnostic Panel was cleared by FDA in 2020 (9). On July 2, 2020, FDA granted an emergency use authorization (EUA) for in vitro diagnostic use of the Flu SC2 Multiplex Assay (15).

Multiplex detection of RNA from influenza A virus, influenza B virus, and SARS-CoV-2 can increase testing capacity and reduce use of reagents. The increased throughput can preserve staff resources and reduce turnaround time. The Flu SC2 Multiplex Assay and similar panels identify co-infections or alternative causes of influenza-like and COVID-19-like illnesses. The Flu SC2 Multiplex Assay can enable collection of critical data on influenza A and B viruses and SARS-CoV-2, as well as the prevalence of co-infection among these respiratory viruses.

## Materials and Methods

### Influenza Viruses and SARS-CoV-2

Influenza viruses were grown to high titer in Madin-Darby Canine Kidney cells or embryonated chicken eggs. Infectious virus titer in the cell culture supernatant or allantoic fluid was measured by using 50% tissue culture infectious dose (TCID<sub>50</sub>) or 50% egg infectious dose (EID<sub>50</sub>) (16). The SARS-CoV-2 virus

(2019-nCoV/USA-WA1/2020; GenBank accession no. MT576563) was grown to high titer in Vero cells; the infectious virus titer in the cell culture supernatant was measured by using TCID<sub>50</sub> (16). Total nucleic acids were extracted by using the EZ1 DSP Virus Kit on the EZ1 Advanced XL automated extractor (QIAGEN, <https://www.qiagen.com>).

### Primers and Probes

Primers and probes were selected from highly conserved regions of the SARS-CoV-2 genome based on ≈4,000 sequences available in GISAID (<https://www.gisaid.org>) in March 2020 (Table 1). Primer Express 3.0.1 software (Thermo Fisher Scientific, <https://www.thermofisher.com>) was used to design primers that had annealing temperatures of ≈60°C and probes that had annealing temperatures of ≈68°C.

The multiplex assay probes were synthesized by using ZEN or TAO Double-Quenched Probes labeled at the 5' end using reporter 6-carboxyfluorescein (FAM) for InfA, Yakima Yellow for InfB, Texas Red-XN for SARS-CoV-2, and Cyanine 5 (Cy 5) for RP targets (Integrated DNA Technologies, Inc., <https://www.idtdna.com>). The InfA and InfB probes were quenched with ZEN between nucleotides 9 and 10 and with Iowa Black FQ at the 3' end; the SARS-CoV-2 and RP probes were quenched with TAO between nucleotides 9 and 10 and with Iowa Black RQ at the 3' end (Integrated DNA Technologies, Inc.). Primers and Taqman hydrolysis probes were synthesized by Integrated DNA Technologies and the CDC Biotechnology Core Facility Branch (Division of Scientific Resources, National Center for Emerging and Zoonotic Infectious Diseases; Atlanta, Georgia, USA).

### rRT-PCR Reaction Conditions

The rRT-PCR reactions of the Flu SC2 Multiplex Assay were optimized and conducted by using the TaqPath 1-Step Multiplex Master Mix (No Rox) (Thermo Fisher Scientific) and the 7500 Fast Dx Real-Time PCR Instrument (Thermo Fisher Scientific). The final volume of 25 μL included 6.25 μL of TaqPath 1-Step Multiplex Master Mix (No Rox) and 5 μL RNA. We used final concentrations of 400 nmol for the InfA F1 and F2 primers, 600 nmol for the InfA R1 primer, and 200 nmol for the InfA R2 primer; all other primers had final concentrations of 800 nmol. Probes had a final concentration of 200 nmol. Reaction conditions for the multiplex rRT-PCR were based on conditions for the CDC rRT-PCR Flu Panel, but we reduced the reverse transcription step from 30 min to 15 min (9,17). We used the following thermocycling conditions for

**Table 1.** Primers and probes used in the Influenza SARS-CoV-2 Multiplex Assay\*

Primer or probe	Oligonucleotide sequence, 5'→3'	Target gene or region	Nucleotide position†	Concentration, µM‡
<b>InfA</b>				
Forward primer 1	CAA GAC CAA TCY TGT CAC CTC TGAC	Matrix protein	143–167	3.33
Forward primer 2	CAA GAC CAA TYC TGT CAC CTY TGAC		143–167	3.33
Reverse primer 1	GCA TTY TGG ACA AAV CGT CTA CG		248–226	5
Reverse primer 2	GCA TTT TGG ATA AAG CGT CTA CG		248–226	1.67
<b>InfB</b>				
Forward primer	TCC TCA AYT CAC TCT TCG AGC G	Nonstructural protein	746–767	6.67
Reverse primer	CGG TGC TCT TGA CCA AAT TGG		848–828	6.67
<b>RP</b>				
Forward primer	AGA TTT GGA CCT GCG AGC G	Human RNase P	50–67	6.67
Reverse primer	GAG CGG CTG TCT CCA CAA GT		50–67	6.67
<b>SARS-CoV-2</b>				
Forward primer	CTG CAG ATT TGG ATG ATT TCT CC	Nucleoprotein–3' untranslated region	29463–29485	6.67
Reverse primer	CCT TGT GTG GTC TGC ATG AGT TTA G		29554–29530	6.67
InfA probe§	TGC AGT CCT /ZEN/ CGC TCA CTG GGC	Matrix protein	224–201	1.67
InfB probe¶	CCA ATT CGA /ZEN/ GCA GCT GAA ACT GCG	Nonstructural protein	790–817	1.67
RP probe#	TTC TGA CCT /TAO/ GAA GGC TCT GCG CG	Human RNase P	71–93	1.67
SARS-CoV-2 probe**	ATT GCA ACA /TAO/ ATC CAT GAG CAG TGC	Nucleoprotein–3' untranslated region	29491–29520	1.67

rRT-PCR: 25°C for 2 min, 50°C for 15 min, *Taq* activation at 95°C for 2 min, 45 cycles at 95°C for 15 sec, and 55°C for 30 sec. We conducted comparator reactions using influenza singleplex rRT-PCR and the CDC 2019-nCoV Real-Time RT-PCR Diagnostic Panel, as described previously (7,10,17).

### Analytical Sensitivity and Specificity

A quantified synthetic RNA material (Armored RNA Quant CDC-9; Asuragen, Inc., <https://asuragen.com>) was used to test analytical sensitivity. The synthetic RNA included primer–probe region sequences derived from the M gene of A/Brisbane/02/2018\_(H1N1)pdm09 (GISAID accession no. EPI1799928), for the InfA target, the NS gene of B/Colorado/06/2017\_Victoria (GISAID accession no. EPI1056634) for the InfB target, and the *Homo sapiens* (human) ribonuclease P/MRP subunit P30 gene for the RP target. We used RNA extracted from propagated, A/Illinois/20/2018\_(H1N1)pdm09 (GI-

SAID accession no. EPI1220313; GenBank accession no. MH359945), and B/Colorado/06/2017\_Victoria viruses to test the analytical sensitivity of the InfA and InfB targets. We used Twist Synthetic SARS-CoV-2 RNA Control 2 (Twist Bioscience, <https://www.twistbioscience.com>) and RNA extracted from propagated SARS-CoV-2 virus (2019-nCoV/USA-WA1/2020) to assess analytical sensitivity of the SARS-CoV-2 target.

We evaluated assay specificity by using a panel of influenza A virus, influenza B virus, and SARS-CoV-2. This panel included influenza A(H1/H3) variant viruses that usually circulate among swine and have caused outbreaks and pandemics in human populations (18–22).

We used a collection of influenza C viruses, coronaviruses, and human noninfluenza respiratory pathogens to test the analytical specificity of the Flu SC2 Multiplex Assay. We also tested the specificity of the SARS-CoV-2 target with an RNA transcript

generated from a clone representing nt 27768–29738 of the severe acute respiratory syndrome coronavirus (SARS-CoV)/Urbani genome, which contains the entire N gene through the 3'-terminus, and a full SARS-CoV viral genome.

To test sensitivity to co-infection, we created a serial dilution with nucleic acids extracted from A/Illinois/20/2018\_(H1N1)pdm09, B/Colorado/06/2017\_Victoria, 2019-nCoV/USA-WA1/2020, and adenocarcinomic human alveolar basal epithelial cells (A549). We tested the dilution by the Flu SC2 Multiplex Assay, influenza A and influenza B singleplex rRT-PCR from the CDC rRT-PCR Flu Dx Panel Influenza A/B Typing Kit, and the N1 component of the CDC 2019-nCoV Real-Time RT-PCR Diagnostic Panel.

### In Silico Analysis

We tested the specificity and sensitivity of each primer and probe oligonucleotide sequence for the SARS-CoV-2 target of the Flu SC2 Multiplex Assay by BLAST analysis (<http://blast.ncbi.nlm.nih.gov/blast.cgi>) against the nr/nt database and the National Center for Biotechnology Information and GISAID  $\beta$  Coronaviridae nucleotide database. We analyzed results and assessed for potential non-SARS-CoV-2 matches (Appendix). We compared the primer and probe sequences with SARS-CoV-2 variant sequences available in GISAID on January 19, 2021, including 501Y.V1, a B.1.1.7 variant from the United Kingdom; 501Y.V2, a B.1.351 variant from South Africa; and 501Y.V3, a P.1 variant from Brazil.

### Assay Performance with Clinical Specimens

We evaluated the clinical performance of the Flu SC2 Multiplex Assay using 104 upper and lower respiratory specimens, including oral swab, throat swab, nasopharyngeal swab, oropharyngeal swab, and sputum samples. Total nucleic acids were extracted from 120  $\mu$ L of each clinical specimen by using the EZ1 DSP Virus Kit on the EZ1 Advanced XL automated extractor (QIAGEN). The extracted material was eluted in 120  $\mu$ L elution buffer. Specimens were tested with the Flu SC2 Multiplex Assay, the CDC Human Influenza Real-Time RT-PCR Diagnostic Panel: Influenza A/B Typing Kit version 2 [510 (k) no. K200370], or the CDC 2019-nCoV Real-Time RT-PCR Diagnostic Panel, as described previously (7,9).

## Results

### Developing the SARS-CoV-2 Target

We identified candidate SARS-CoV-2 targets and evaluated them by an in silico screening process. This

process identified targets with very few mismatches across the available SARS-CoV-2 genomes and accounted for RNA structural elements known to be essential for related betacoronaviruses. In total, we tested 17 SARS-CoV-2 assay designs in singleplex format; we subsequently tested a subset of these candidates using the multiplex format, including published targets in the RNA-dependent RNA polymerase and E gene regions (Appendix Table 1) (23). We selected for the assay the SARS-CoV-2 target with the highest levels of sensitivity and specificity and that accurately identified residual clinical respiratory specimens.

The SARS-CoV-2 assay is selective for the 3' region of the SARS-CoV-2 genome from the carboxy terminus of the of the N gene into the 3'-UTR (Appendix Figure). This region is expressed at high levels in infected cells and is highly conserved because it encodes a cis-acting RNA pseudoknot essential for the transcription and replication of closely related betacoronaviruses (24).

### Analytical Sensitivity of Flu SC2 Multiplex Assay

We determined the analytical sensitivity of the Flu SC2 Multiplex Assay by calculating the limits of detection using extracted RNA from influenza A virus, influenza B virus, and SARS-CoV-2. We used serial 10-fold dilutions of extracted RNA to identify an endpoint for detection with each primer and probe set included in the multiplex assay (data not shown). After a detection range was established, we tested serial 5-fold dilutions of extracted RNA from each virus at titers near the limit of detection (LOD) with the Flu SC2 Multiplex Assay, the CDC 2019-nCoV Real-Time RT-PCR Diagnostic Panel, or the CDC rRT-PCR Flu Dx Panel: Influenza A/B Typing Kit version 2 [510 (k) no. K200370] (Table 2). We determined the limits of detection to be  $10^{2.0}$  TCID<sub>50</sub> for influenza A,  $10^{2.2}$  EID<sub>50</sub> for influenza B, and  $10^{0.3}$  TCID<sub>50</sub> for SARS-CoV-2 (Table 2). These values correspond to  $10^{-0.3}$  TCID<sub>50</sub> for each influenza A reaction,  $10^{-0.1}$  EID<sub>50</sub> for influenza B, and  $10^{-2.0}$  TCID<sub>50</sub> for SARS-CoV-2 (i.e., 5  $\mu$ l RNA/reaction). We confirmed the LOD through further testing of 20 replicate viral isolates mixed with A549 cells at the established LOD and at a 5-fold dilution step above the established LOD; this process demonstrated that the multiplex assay can detect >95% of samples at the lowest detectable concentrations (Table 3; Appendix Table 2). The SD across the 20-replicate experiment was very low, demonstrating the consistency of the multiplex results even at the LOD (Table 3).

We used an engineered RNA construct (Armored RNA Quant CDC-9; Asuragen, Inc.) containing the

**Table 2.** Sensitivity of the Influenza SARS-CoV-2 Multiplex Assay compared with singleplex assays\*

Viral titers†	Cycle threshold value‡					
	Multiplex			Singleplex		
<b>A/Illinois/20/2018_(H1N1)pdm09</b>						
10 <sup>4.1</sup>	23.50	23.59	23.17	24.97	24.97	24.66
10 <sup>3.4</sup>	26.57	26.50	26.81	27.71	27.49	27.50
10 <sup>2.7</sup>	29.90	30.20	30.15	30.50	29.97	29.74
<b>10<sup>2.0</sup></b>	35.58	35.24	36.17	32.32	32.43	33.63
10 <sup>1.3</sup>	42.23	37.28	0	36.01	34.61	34.96
<b>B/Colorado/06/2017_Victoria</b>						
10 <sup>4.3</sup>	24.47	24.44	24.31	25.80	25.68	25.93
10 <sup>3.6</sup>	27.57	27.45	27.71	28.84	28.98	29.30
10 <sup>2.9</sup>	31.09	30.17	30.47	32.10	32.10	32.38
<b>10<sup>2.2</sup></b>	34.38	33.49	34.43	35.19	35.49	35.99
10 <sup>1.5</sup>	39.75	0	0	0	0	0
<b>2019-nCoV/USA-WA1/2020</b>						
10 <sup>2.4</sup>	25.41	25.8	25.42	26.48	26.57	26.46
10 <sup>1.7</sup>	28.69	28.87	28.5	30.26	29.77	29.51
10 <sup>1.0</sup>	31.31	31.42	31.32	32.74	33.17	32.27
<b>10<sup>0.3</sup></b>	35.14	36.36	34.58	36.10	35.34	35.81
10 <sup>-0.4</sup>	0	0	0	37.16	0	0

\*Multiplex PCR is selective for influenza A virus, influenza B virus, and SARS-CoV-2. Boldface type indicates limits of detection. SARS-CoV-2, severe acute respiratory syndrome coronavirus 2.  
 †Viral titers are in relation to 50% tissue culture infectious dose, except for B/Colorado/06/2017, which is in relation to 50% egg infectious dose.  
 ‡The multiplex cycle threshold values were derived from Influenza SARS-CoV-2 Multiplex Assay. The singleplex cycle threshold values were derived from the InfA (for influenza A), InfB (for influenza B), or N1 singleplex assays (for SARS-CoV-2). The N1 singleplex assay is a component of the CDC 2019-nCoV Real-Time RT-PCR Diagnostic Panel (7). The InfA and InfB singleplex assays are components of the CDC Human Influenza Virus Real-Time RT-PCR Detection and Characterization Panel [510(k) no. K200370] (9). Each assay was performed in triplicate.

target sequences for the InfA, InfB, and RP assays to test the copy number sensitivity of the multiplex assay through serial dilutions. We assessed copy number sensitivity of the SARS-CoV-2 assay by using a serial dilution of a synthetic SARS-CoV-2 genome (GenBank accession no. MN908947.3; Twist Bioscience). All targets in the assay could detect as few as 5 RNA copies per reaction (Table 4).

**Analytical Specificity of Flu SC2 Multiplex Assay**

Initially, the Flu SC2 Multiplex Assay was screened using no template control reactions; we found no intramolecular or intermolecular nonspecific interactions that resulted in any products (data not shown). The specificity of the primers and probes was evaluated with viral RNA from 13 influenza A, 2 influenza B, and 1 SARS-CoV-2 isolate. The

viral RNAs were tested at high and low titers; each assay accurately detected the corresponding viral target (Table 5). We observed no cross-reactivity among the 4 targets within the assays, nor did we observe any bleed-through fluorescence imaging from neighboring channels when testing the individual assays (Table 5).

To confirm that the SARS-CoV-2 assay was specific to that virus, we tested 6 known human coronaviruses, 2 alphacoronaviruses, 2 group A betacoronaviruses, and 2 group B betacoronavirus (i.e., SARS-CoV and Middle East respiratory syndrome coronavirus [MERS-CoV]), as well as an RNA transcript including the entire SARS-CoV N gene region through the 3' UTR. No cross-reactivity was observed, demonstrating the high specificity of the assay (Appendix Table 3).

**Table 3.** Confirmation of established limits of detection of the Influenza SARS-CoV-2 Multiplex Assay\*

Viral titer†	Influenza A		Influenza B		SARS-CoV-2	
	No. (%) positive	Mean C <sub>t</sub> ±SD	No. (%) positive	Mean C <sub>t</sub> ±SD	No. (%) positive	Mean C <sub>t</sub> ±SD
<b>A/Illinois/20/2018_(H1N1)pdm09</b>						
10 <sup>2.7</sup>	20 (100)	29.71 ±0.51	0	NA	0	NA
<b>10<sup>2.0</sup></b>	20 (100)	33.55 ±1.15	0	NA	0	NA
<b>B/Colorado/06/2017_Victoria</b>						
10 <sup>2.9</sup>	0	NA	20 (100)	29.80 ±0.74	0	NA
<b>10<sup>2.2</sup></b>	0	NA	20 (100)	32.70 ±0.48	0	NA
<b>2019-nCoV/USA-WA1/2020</b>						
10 <sup>1.0</sup>	0	NA	0	NA	20 (100)	32.59 ±0.78
<b>10<sup>0.3</sup></b>	0	NA	0	NA	19 (95)	34.71 ±1.03

\*Multiplex real-time reverse transcription PCR for influenza A virus, influenza B virus, and SARS-CoV-2. Boldface type indicates limits of detection. C<sub>t</sub>, cycle threshold; NA, not applicable; SARS-CoV-2, severe acute respiratory syndrome coronavirus 2; SD, standard deviation.  
 †Viral titers are in relation to 50% tissue culture infectious dose, except for B/Colorado/06/2017, which is in relation to 50% egg infectious dose.

**Table 4.** Evaluation of the Influenza SARS-CoV-2 Multiplex Assay sensitivity using quantified synthetic RNAs\*

RNA copies/reaction	Cycle threshold values											
	Influenza A			Influenza B			SARS-CoV-2			RNase P (human)		
50,000	23.72	24.02	23.86	22.02	21.59	21.88	20.05	20.26	20.08	22.02	22.13	21.69
5,000	27.01	27.38	28.01	25.17	25.03	25.04	24.03	24.12	24.15	25.12	24.68	25.09
500	31.74	31.73	32.48	28.52	28.02	28.88	27.25	28.01	27.60	28.19	28.02	28.11
50	35.60	35.34	36.65	32.58	31.58	31.17	31.89	31.33	32.93	31.47	31.54	30.59
5	36.50	38.40	0	33.76	34.65	36.15	34.24	34.03	34.25	34.33	35.42	39.02

\*Multiplex real-time reverse transcription PCR for influenza A virus, influenza B virus, and SARS-CoV-2. Influenza A, Influenza B, and RP targets were quantified using Armored RNA Quant CDC-9 (Asuragen, Inc., <https://asuragen.com>), which includes the M gene of influenza A virus strain A/Brisbane/02/2018\_H1N1, the NS gene of influenza B virus strain B/Colorado/06/2017, and RP; the SARS-CoV-2 target was quantified using Twist Synthetic SARS-CoV-2 RNA (Twist Bioscience, <https://www.twistbioscience.com>). SARS-CoV-2, severe acute respiratory syndrome coronavirus 2.

To further evaluate the specificity of the multiplex assay, we also tested common respiratory pathogens and genetic near neighbors of viruses selected for by the assay. Nucleic acids from high titer viral preparations were extracted and tested with the Flu SC2 Multiplex Assay; no cross-reactivity was observed (Appendix Table 4).

An extensive in silico BLAST analysis of the primer and probe sequences for the SARS-CoV-2 target confirmed that the assay is specific to SARS-CoV-2; no evidence of non-SARS-CoV-2 target matches was found (Figure; Appendix Table 5). These results demonstrate that Flu SC2 Multiplex Assay is specific to

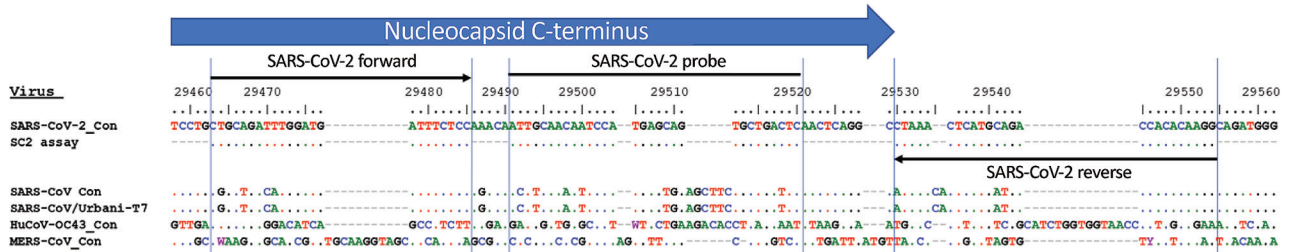
**Table 5.** Evaluation of the Influenza SARS-CoV-2 Multiplex Assay specificity\*

Virus strain	Lineage	GISAID accession no.	Con†	Cycle threshold value								
				Influenza A			Influenza B			SARS-CoV-2		
Influenza A												
A/Florida/81/2018	A(H1N1) pdm09	EPI1310819	10 <sup>8.1</sup>	13.97	14.00	14.02	0	0	0	0	0	0
			10 <sup>3.1</sup>	27.48	28.16	27.74	0	0	0	0	0	0
A/Kansas/14/2017	A(H3N2)	EPI1653963	10 <sup>8.5</sup>	13.62	13.66	13.68	0	0	0	0	0	0
			10 <sup>5.5</sup>	25.07	25.00	25.01	0	0	0	0	0	0
A/Ohio/35/2017	A(H1N2)v	EPI1056728	10 <sup>6.9</sup>	14.71	14.90	14.84	0	0	0	0	0	0
			10 <sup>1.9</sup>	30.91	31.25	30.99	0	0	0	0	0	0
A/chicken/Pennsylvania/298101-4/2004	A(H2N2)	EPI229365	10 <sup>9.5</sup>	15.60	15.66	15.74	0	0	0	0	0	0
			10 <sup>3.5</sup>	33.40	33.20	34.71	0	0	0	0	0	0
A/Ohio/13/2017	A(H3N2)v	EPI1056648	10 <sup>6.6</sup>	20.85	20.96	20.86	0	0	0	0	0	0
			10 <sup>1.6</sup>	35.48	35.49	33.98	0	0	0	0	0	0
A/canine/Florida/43/2004	A(H3N2)	EPI98471	10 <sup>8.1</sup>	19.61	19.69	19.44	0	0	0	0	0	0
			10 <sup>4.1</sup>	34.10	35.45	36.87	0	0	0	0	0	0
A/equine/Ohio/01/2003	A(H3N8)	DQ124188§	10 <sup>8.4</sup>	16.50	16.70	16.68	0	0	0	0	0	0
			10 <sup>3.4</sup>	31.01	31.55	31.07	0	0	0	0	0	0
A/Northern pintail/Washington/40964/2014	A(H5N2)	EPI860995	10 <sup>9.4</sup>	16.39	16.43	16.49	0	0	0	0	0	0
			10 <sup>4.4</sup>	36.89	36.45	34.43	0	0	0	0	0	0
A/gyrfalcon/Washington/41088-6/2014	A(H5N8)	EPI569393	10 <sup>9.75</sup>	14.12	14.10	14.13	0	0	0	0	0	0
			10 <sup>4.75</sup>	29.60	29.38	29.90	0	0	0	0	0	0
A/chicken/California/32213-1/2000	A(H6N2)	EPI1915583	10 <sup>9.2</sup>	14.97	15.05	15.08	0	0	0	0	0	0
			10 <sup>3.2</sup>	34.19	32.52	32.49	0	0	0	0	0	0
A/feline/New York/16-040082-1/2016	A(H7N2)	EPI985440	10 <sup>10.2</sup>	15.76	15.94	16.00	0	0	0	0	0	0
			10 <sup>5.2</sup>	28.16	28.30	28.46	0	0	0	0	0	0
A/Taiwan/1/2017	A(H7N9)	EPI917065	10 <sup>9.5</sup>	16.69	16.90	16.99	0	0	0	0	0	0
			10 <sup>3.5</sup>	32.20	33.11	32.53	0	0	0	0	0	0
A/Bangladesh/0994/2011	A(H9N2)	EPI445991	10 <sup>10.5</sup>	18.03	18.14	18.21	0	0	0	0	0	0
			10 <sup>4.5</sup>	34.25	35.32	36.90	0	0	0	0	0	0
Influenza B												
B/Maryland/15/2016	B(Victoria)	EPI1255266	10 <sup>8.5</sup>	0	0	0	13.46	13.49	13.47	0	0	0
			10 <sup>2.5</sup>	0	0	0	30.82	31.07	31.20	0	0	0
B/Phuket/3073/2013	B (Yamagata)	EPI1799818	10 <sup>8.9</sup>	0	0	0	13.66	13.67	13.68	0	0	0
			10 <sup>2.9</sup>	0	0	0	31.87	31.77	32.18	0	0	0
SARS-CoV-2												
2019-nCoV/USA-WA1/2020	Beta-coronavirus	MT 576563	10 <sup>4.5</sup>	0	0	0	0	0	0	18.34	18.55	18.41
			10 <sup>0.5</sup>	0	0	0	0	0	0	33.11	34.15	34.88

\*Multiplex real-time reverse transcription PCR for influenza A virus, influenza B virus, and SARS-CoV-2. Evaluation conducted in triplicate. Con, concentration; SARS-CoV-2, severe acute respiratory syndrome coronavirus 2.

†Concentration in relation to 50% tissue culture infectious dose.

§GenBank accession number.



**Figure.** Alignment of SARS-CoV-2-specific PCR with consensus sequences for SARS-CoV-2, SARS-CoV, MERS-CoV, and HuCoV-OC43. Consensus sequence for SARS-CoV/Urbani-T7 was reverse transcribed from SARS-CoV strain Urbani (GenBank accession no. AY278741). HuCoV-OC43, human coronavirus OC43 consensus sequence; MERS-CoV, Middle East respiratory syndrome coronavirus; SARS-CoV, severe acute respiratory syndrome coronavirus; SARS-CoV-2, severe acute respiratory syndrome coronavirus 2.

influenza A viruses, influenza B viruses, and SARS-CoV-2; it does not detect other respiratory pathogens or close relatives, including SARS-CoV.

An in silico analysis compared the genomes of the emerging SARS-CoV-2 variants B.1.1.7, B.1.351, and P.1 with the sequence of the SARS-CoV-2 target. This analysis demonstrated that during January 2021, most (>99.5%) of the variant virus sequencing data was identical to the SARS-CoV-2 target sequence; of the genomes that had <100% match, none except 2 sequences displayed >1 mismatch for any region of the assay (Appendix Table 6). Therefore, the Flu SC2 Multiplex Assay should accurately detect the B.1.1.7, B.1.351, and P.1 SARS-CoV-2 variants.

**Co-Infection Sensitivity of Flu SC2 Multiplex Assay**

We evaluated the analytical sensitivity of the multiplex assay in the context of a mock co-infection scenario by testing a mixture of nucleic acids extracted from influenza A, influenza B, SARS-CoV-2, and A549 cells with the Flu SC2 Multiplex Assay and the InfA, InfB, and N1 singleplex assays (7,9). The results demonstrated that the multiplex assay can detect all 4 targets simultaneously at comparable or higher sensitivity levels than each singleplex comparator (Appendix Table 7).

**Performance on Clinical Specimens**

We evaluated the clinical performance of the multiplex assay by using residual clinical respiratory specimens. Nucleic acids were extracted from 104

prospective and retrospective clinical specimens, including 33 SARS-CoV-2–positive, 30 influenza A–positive, 30 influenza B–positive, and 11 negative residual clinical samples. The samples were tested with the Flu SC2 Multiplex Assay; the results were in 100% agreement with the expected value for each specimen (Table 6; Appendix Tables 8, 9).

**Discussion**

SARS-CoV-2 emerged in December 2019 and quickly spread, causing the COVID-19 pandemic. As the SARS-CoV-2 infection rate increased, the demand for viral diagnostic testing also increased. The Flu SC2 Multiplex Assay increases throughput and uses less reagent than the CDC 2019-nCoV Real-Time RT-PCR Diagnostic Panel, thus improving SARS-CoV-2 testing efficiency. The multiplex assay enables laboratories to simultaneously test for influenza viruses and SARS-CoV-2, an application that is especially useful because influenza virus and SARS-CoV-2 infections cause similar signs and symptoms (25,26). Although not described in this article, additional enzyme master mix combinations, nucleic acid extraction platforms, and an alternative manufacturer were added to the assay EUA, further improving its utility (15,27). CDC granted the right of reference to all data submitted to the FDA for EUA authorization of the Flu SC2 Multiplex Assay. Several commercial providers have leveraged the data to produce multiplex kits, including the BioSearch Valuepanel (LGC BioSearch Technologies, <https://www.biosearchtech.com>), PrimeTime

**Table 6.** Clinical performance of the Influenza SARS-CoV-2 Multiplex Assay\*

Specimen type (no.)	Influenza A–positive	Influenza B–positive	SARS-CoV-2–positive	Negative for all 3 viral targets
Influenza A (30)	30	0	0	0
Influenza B (30)	0	30	0	0
SARS-CoV-2 (33)	0	0	33	0
Negative for all 3 viral targets (11)	0	0	0	11

\*Multiplex real-time reverse transcription PCR for influenza A virus, influenza B virus, and SARS-CoV-2. SARS-CoV-2, severe acute respiratory syndrome coronavirus 2; (+), positive.

SARS-CoV-2/Flu Test Integrated DNA Technologies, Inc., Accuplex (includes assay for human respiratory syncytial virus) (SeraCare Life Sciences, Inc., <https://www.seracare.com>), BioRad Reliance (Bio-Rad Laboratories, Inc., <https://www.bio-rad.com>), and FLU SC2 RT-PCR (InGenuityD Diagnostics, <https://ingenuityd.com>).

The analytical sensitivity of the Flu SC2 Multiplex Assay was evaluated; each component was comparable to the singleplex versions of each assay. The assay detects titers as low as  $10^{2.2}$ – $10^{0.3}$  TCID<sub>50</sub> or EID<sub>50</sub> (or  $10^{-2.0}$ – $10^{-0.1}$  TCID<sub>50</sub> or EID<sub>50</sub>/reaction) of influenza A viruses, influenza B viruses, and SARS-CoV-2, or as few as 5 RNA copies/reaction. We observed no cross-reactivity among the targets, even at high viral titers; none with the other 6 known human coronaviruses, including SARS-CoV and MERS-CoV; and none with influenza C cultured viruses or other common noninfluenza respiratory pathogens (28). The Flu SC2 assays manufactured by CDC are evaluated to ensure that the LOD of each lot is comparable with the LOD established in the EUA. Quality assessments ensure limited variability: lots that have a variance of >2 cycle thresholds from the EUA submission data against standard quality control virus dilution series are deemed unacceptable for distribution (data not shown). These standards ensure that sensitivity and specificity are maintained through the manufacturing process.

The SARS-CoV-2 target used by the multiplex panel was selected from a conserved and vital region of the N gene (29). Analytical evaluation and *in silico* analysis demonstrated the target is sensitive and specific to SARS-CoV-2 and will not detect other human coronaviruses, including SARS-CoV and MERS-CoV. The *in silico* analysis of 376,469 SARS-CoV-2 sequences available in GISAID in January 2021 indicated that >99.9% of the viruses have ≤1 mismatch within a single primer or probe of the SARS-CoV-2 assay (Appendix Table 5). An *in silico* analysis of genomes from the emerging SARS-CoV-2 B.1.1.7, B.1.351, and P.1 variants demonstrated that the target is identical to the genome sequence for >99.5% of these variant genomes (Appendix Table 6). The Flu SC2 Multiplex Assay should detect these emerging variants because the mutations associated with these variants are located within a different region of the genome than the target.

The Flu SC2 Multiplex Assay was evaluated using a reference panel developed by the FDA for assessing diagnostic nucleic acid amplification tests for SARS-CoV-2 (30,31). The panel consisted of reference SARS-CoV-2 material, blinded samples, and

a protocol provided by the FDA. The evaluation included range finding and confirmatory studies for LOD, as well as blinded sample testing to establish specificity and further confirmation of the LODs. The LOD of the Flu SC2 Multiplex Assay using the FDA panel was  $5.7 \times 10^3$  nucleic acid amplification test detectable units/mL, with no observable cross-reactivity with MERS-CoV (32).

In summary, the Flu SC2 Multiplex Assay demonstrates a high level of specificity and sensitivity. In a single reaction, it can detect and distinguish 3 major respiratory viruses as well as the human quality control target, thereby increasing the testing throughput. Additional advantages of the Flu SC2 Multiplex Assay include fewer freeze-thaw cycles, decreased potential for contamination through a reduction in the number of reactions, and fewer opportunities for pipetting errors. With this multiplex assay, users can rapidly test large amounts of samples. Although the influenza season for 2020–21 had historically few cases, this assay will be beneficial in upcoming influenza seasons when influenza might co-circulate with SARS-CoV-2.

#### Acknowledgments

We acknowledge and thank the Laboratory and Testing Task Force team, including Kevin Karem, Wendi Kuhnert-Tallman, Jeff Johnson, Michele Owen, Christopher Elkins, Victoria Olson, Alison Laufer Halpin, and Sean Courtney, for guidance, resources, and feedback during the development of the Flu SC2 Multiplex Assay. We also acknowledge and thank the CDC Division of Scientific Resources, National Center for Emerging and Zoonotic Infectious Diseases, for their support with primer and probe synthesis during the development phase of the assay. Individual external experts were consulted to review the design and approach of the Flu SC2 Multiplex Assay; we acknowledge and thank Tom Slezak, Timothy Minogue, and Pardis Sabeti for their time and feedback. We would like to acknowledge and thank the public health laboratories that performed preliminary testing and feedback of the Flu SC2 Multiplex Assay, including Matthew Charles, Leslie Chapman, Christopher Vogt, and Jamie Pierce of the Illinois Department of Public Health Division of Laboratories; Peter Shult and Erik Reisdorf of the Wisconsin State Laboratory of Hygiene; Carol Loring of the New Hampshire Public Health Laboratories; and Rene C. Hull and Kirsten St. George of the Wadsworth Center, New York State Department of Health. Finally, we thank and acknowledge the authors, as well as the originating and submitting laboratories, who submitted sequences to the GISAID database (<https://www.gisaid.org>).



## About the Authors

Drs. Shu and Kirby are biologists with the Genomics and Diagnostics Team in the Influenza Division, National Center for Immunization and Respiratory Diseases, Centers for Disease Control and Prevention, Atlanta, Georgia, USA. Their research interests include detection of influenza viruses and severe acute respiratory syndrome coronavirus 2.

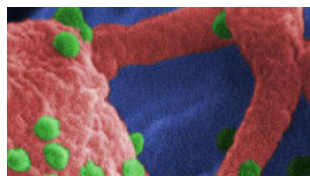
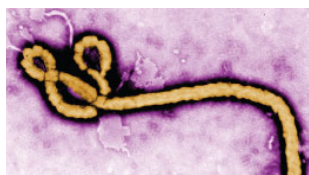
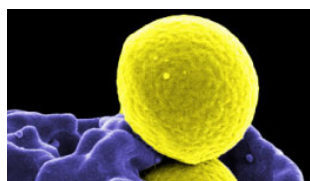
## References

- World Health Organization. Pneumonia of unknown cause—China. 2020 [cited 2020 Jul 8]. <https://www.who.int/csr/don/05-january-2020-pneumonia-of-unknown-cause-china/en/>
- Zhu N, Zhang D, Wang W, Li X, Yang B, Song J, et al.; China Novel Coronavirus Investigating and Research Team. A novel coronavirus from patients with pneumonia in China, 2019. *N Engl J Med*. 2020;382:727–33. <https://doi.org/10.1056/NEJMoa2001017>
- Cucinotta D, Vanelli M. WHO declares COVID-19 a pandemic. *Acta Biomed*. 2020;91:157–60.
- Dong E, Du H, Gardner L. An interactive web-based dashboard to track COVID-19 in real time. *Lancet Infect Dis*. 2020;20:533–4. [https://doi.org/10.1016/S1473-3099\(20\)30120-1](https://doi.org/10.1016/S1473-3099(20)30120-1)
- Slabodkin G. FDA chief warns of supply pressure on reagents for coronavirus tests. *MedTech Dive*. 2020 [cited 2020 Sep 15]. <https://www.medtechdive.com/news/fda-chief-warns-of-supply-pressure-on-reagents-for-coronavirus-tests/573999/>
- Wu KJ. It's like Groundhog Day: coronavirus testing labs again lack key supplies. *The New York Times*. 2020 Jul 23 [cited 2020 Sep 15]. <https://www.nytimes.com/2020/07/23/health/coronavirus-testing-supply-shortage.html>
- Lu X, Wang L, Sakthivel SK, Whitaker B, Murray J, Kamili S, et al. US CDC real-time reverse transcription PCR panel for detection of severe acute respiratory syndrome coronavirus 2. *Emerg Infect Dis*. 2020;26:1654–65. <https://doi.org/10.3201/eid2608.201246>
- Houser K, Subbarao K. Influenza vaccines: challenges and solutions. *Cell Host Microbe*. 2015;17:295–300. <https://doi.org/10.1016/j.chom.2015.02.012>
- US Food and Drug Administration. 510 (k): CDC Human Influenza Virus Real-Time RT-PCR Diagnostic Panel. 2020 [2020 Mar 10]. [https://www.accessdata.fda.gov/cdrh\\_docs/pdf20/K200370.pdf](https://www.accessdata.fda.gov/cdrh_docs/pdf20/K200370.pdf)
- US Food and Drug Administration. Human Influenza Virus Real-Time RT-PCR Detection and Characterization Panel: 510(k) 080570. 2008 [2008 Sep 26]. [https://www.accessdata.fda.gov/cdrh\\_docs/pdf8/k080570.pdf](https://www.accessdata.fda.gov/cdrh_docs/pdf8/k080570.pdf)
- World Health Organization. CDC protocol of realtime RT-PCR for influenza H1N1. 2009 [2009 Apr 30]. <https://www.who.int/csr/resources/publications/swineflu/realtimeptcr/en/index.html>
- World Health Organization. Real-time RT-PCR protocol for the detection of avian influenza A(H7N9) virus. 2013 [2013 Apr 15]. [https://www.who.int/influenza/gisrs\\_laboratory/cnic\\_realtime\\_rt\\_pcr\\_protocol\\_a\\_h7n9.pdf](https://www.who.int/influenza/gisrs_laboratory/cnic_realtime_rt_pcr_protocol_a_h7n9.pdf)
- US Food and Drug Administration. New traditional 510(k): CDC Human Influenza Virus Real-Time RT-PCR Diagnostic Panel. 2019 [2019 Mar 27]. [https://www.accessdata.fda.gov/cdrh\\_docs/pdf19/K190302.pdf](https://www.accessdata.fda.gov/cdrh_docs/pdf19/K190302.pdf)
- Shu B, Kirby MK, Warnes C, Sessions WM, Davis WG, Liu J, et al. Detection and discrimination of influenza B Victoria lineage deletion variant viruses by real-time RT-PCR [Erratum in: *Euro Surveill*. 2020;25:201022e]. *Euro Surveill*. 2020;25:1900652. <https://doi.org/10.2807/1560-7917.ES.2020.25.41.1900652>
- US Food and Drug Administration. Coronavirus (COVID-19) update: FDA authorizes additional COVID-19 combination diagnostic test ahead of flu season. 2020 [cited 2020 Jul 8]. <https://www.fda.gov/news-events/press-announcements/coronavirus-covid-19-update-fda-authorizes-additional-covid-19-combination-diagnostic-test-ahead-flu>
- Szretter KJ, Balish AL, Katz JM. Influenza: propagation, quantification, and storage. *Curr Protoc Microbiol*. 2006;3:15G.1.1–15G.1.22.
- Shu B, Wu KH, Emery S, Villanueva J, Johnson R, Guthrie E, et al. Design and performance of the CDC real-time reverse transcriptase PCR swine flu panel for detection of 2009 A (H1N1) pandemic influenza virus. *J Clin Microbiol*. 2011;49:2614–9. <https://doi.org/10.1128/JCM.02636-10>
- Garten RJ, Davis CT, Russell CA, Shu B, Lindstrom S, Balish A, et al. Antigenic and genetic characteristics of swine-origin 2009 A(H1N1) influenza viruses circulating in humans. *Science*. 2009;325:197–201. <https://doi.org/10.1126/science.1176225>
- Jhung MA, Epperson S, Biggerstaff M, Allen D, Balish A, Barnes N, et al. Outbreak of variant influenza A(H3N2) virus in the United States. *Clin Infect Dis*. 2013;57:1703–12. <https://doi.org/10.1093/cid/cit649>
- Nelson MI, Gramer MR, Vincent AL, Holmes EC. Global transmission of influenza viruses from humans to swine. *J Gen Virol*. 2012;93:2195–203. <https://doi.org/10.1099/vir.0.044974-0>
- Rajao DS, Vincent AL, Perez DR. Adaptation of human influenza viruses to swine. *Front Vet Sci*. 2019;5:347. <https://doi.org/10.3389/fvets.2018.00347>
- Schicker RS, Rossow J, Eckel S, Fisher N, Bidol S, Tatham L, et al. Outbreak of influenza A(H3N2) variant virus infections among persons attending agricultural fairs housing infected swine—Michigan and Ohio, July–August 2016. *MMWR Morb Mortal Wkly Rep*. 2016;65:1157–60. <https://doi.org/10.15585/mmwr.mm6542a1>
- Corman VM, Landt O, Kaiser M, Molenkamp R, Meijer A, Chu DK, et al. Detection of 2019 novel coronavirus (2019-nCoV) by real-time RT-PCR [Erratum in: *Euro Surveill*. 2020;25:20200409c; 2020;25:2007303; 2021;26:210204e]. *Euro Surveill*. 2020;25. <https://doi.org/10.2807/1560-7917.ES.2020.25.3.2000045>
- Züst R, Miller TB, Goebel SJ, Thiel V, Masters PS. Genetic interactions between an essential 3' cis-acting RNA pseudoknot, replicase gene products, and the extreme 3' end of the mouse coronavirus genome. *J Virol*. 2008;82:1214–28. <https://doi.org/10.1128/JVI.01690-07>
- Konala VM, Adapa S, Gayam V, Naramala S, Daggubati SR, Kammari CB, et al. Co-infection with influenza A and COVID-19. *Eur J Case Rep Intern Med*. 2020;7:001656. [https://doi.org/10.12890/2020\\_001656](https://doi.org/10.12890/2020_001656)
- Konala VM, Adapa S, Naramala S, Chenna A, Lamichhane S, Garlapati PR, et al. A case series of patients coinfecting with influenza and COVID-19. *J Investig Med High Impact Case Rep*. 2020;8:2324709620934674. <https://doi.org/10.1177/2324709620934674>
- US Food and Drug Administration. Coronavirus disease 2019 (COVID-19) emergency use authorizations for medical devices: in vitro diagnostics EUAs. 2019 [cited 2021 Jan 11]. <https://www.fda.gov/medical-devices/coronavirus-disease-2019-covid-19-emergency-use-authorizations-medical-devices/in-vitro-diagnostics-euas>

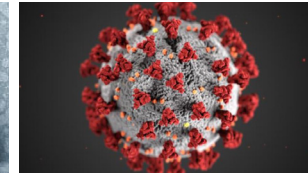
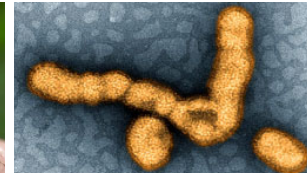
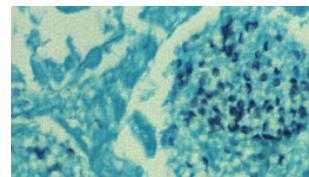
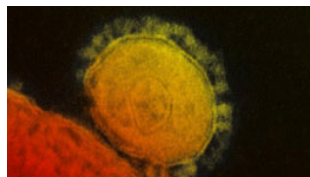
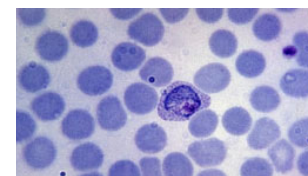
28. Dominguez SR, Shrivastava S, Berglund A, Qian Z, Góes LGB, Halpin RA, et al. Isolation, propagation, genome analysis and epidemiology of HKU1 betacoronaviruses. *J Gen Virol*. 2014;95:836–48. <https://doi.org/10.1099/vir.0.059832-0>
29. Rangan R, Zheludev IN, Hagey RJ, Pham EA, Wayment-Steele HK, Glenn JS, et al. RNA genome conservation and secondary structure in SARS-CoV-2 and SARS-related viruses: a first look. *RNA*. 2020;26:937–59. <https://doi.org/10.1261/rna.076141.120>
30. BioSpectrum Asia. FDA sets up SARS-CoV-2 reference panel for diagnostic tests. 2020 [cited 2020 Sep 15]. <https://www.biospectrumasia.com/news/30/16018/fda-sets-up-sars-cov-2-reference-panel-for-diagnostic-tests.html>
31. US Food and Drug Administration. Coronavirus (COVID-19) update: FDA provides new tool to aid development and evaluation of diagnostic tests that detect SARS-CoV-2 infection. 2020 [cited 2020 Sep 15]. <https://www.fda.gov/news-events/press-announcements/coronavirus-covid-19-update-fda-provides-new-tool-aid-development-and-evaluation-diagnostic-tests>
32. US Food and Drug Administration. SARS-CoV-2 reference panel comparative data. 2020 [cited 2010 Sep 16]. <https://www.fda.gov/medical-devices/coronavirus-covid-19-and-medical-devices/sars-cov-2-reference-panel-comparative-data>

Address for correspondence: John R. Barnes, Centers for Disease Control and Prevention, 1600 Clifton Rd NE, Mailstop H23-12, Atlanta, GA 30329-4027, USA; email: fzq9@cdc.gov

# Emerging Infectious Diseases Spotlight Topics



**Antimicrobial resistance • Ebola  
Etymologia Food safety • HIV-AIDS  
Influenza • Lyme disease • Malaria  
MERS • Pneumonia • Rabies • Ticks  
Tuberculosis • Coronaviru • Zika**



**EID's spotlight topics highlight the latest articles and information on emerging infectious disease topics in our global community**  
<https://wwwnc.cdc.gov/eid/page/spotlight-topics>

# Multiplex Real-Time RT-PCR for Influenza A Virus, Influenza B Virus, and Severe Acute Respiratory Syndrome Coronavirus 2

## Appendix

### Appendix Methods

#### Severe Acute Respiratory Syndrome Coronavirus 2 In silico Analysis

The inclusivity/exclusivity of each primer and probe oligonucleotide sequence for the severe acute respiratory syndrome coronavirus 2 (SARS-CoV-2) target of the Flu SC2 Multiplex Assay was tested by using BLAST (<http://blast.ncbi.nlm.nih.gov/Blast.cgi>) against the nr/nt database. The database search parameters were as follows: the nucleotide collection consists of GenBank+EMBL+DDBJ+PDB+RefSeq sequences, but excludes expressed sequence tags, sequence tagged sites, genome survey sequences, whole-genome shotguns, transcription shotgun assemblies, and patent sequences, as well as phase 0, 1, and 2 high throughput genomic sequences and sequences >100 Mb; the database is nonredundant (identical sequences have been merged, although preserving the accession no., GenInfo identifier, title, and taxonomy information for each entry); the database was updated on January 12, 2021 (n = 66,364,420 sequences); the search parameters automatically adjust for short input sequences and the expected threshold is 1,000; the match score is 1 and mismatch score is -3; the penalty to create a gap is 5 and to extend a gap in an alignment is 2.

In addition, we tested each primer sequence against the NCBI  $\beta$  Coronaviridae nucleotide database ([www.ncbi.nlm.nih.gov/genbank](http://www.ncbi.nlm.nih.gov/genbank)) to test for nonspecific hits within a targeted search space. The database search parameters were the same as described above with the following differences: the nucleotide collection consists of only betacoronavirus nucleotide sequence data; the database is nonredundant (identical sequences have been merged while preserving the accession, GI, title, and taxonomy information for each entry); the database was updated on January 19, 2021 (n = 58,646 sequences). We analyzed and assessed results for potential non-

SARS-CoV-2 target matches. We categorized results as perfect matches to the primer/probe sequences, close matches ( $\leq 2$  nt edit distance), or distant matches ( $> 2$  nt edit distance). Results confirmed only direct matches to SARS-CoV-2 and immediate SARS-CoV-2 ancestors (i.e., no genomes identified with  $> 2$  nt mismatches).

**Appendix Table 1.** Additional primers and probes evaluated for the Influenza SARS-CoV-2 Multiplex Assay\*

Assay	Description†	Oligonucleotide sequence (5'→3')‡	Target gene	Nucleotide position§
N gene	Forward primer	CATTGGCATGGAAGTCACACCT	Nucleocapsid protein	29,230–29,251
	Probe	CGTGGTTGACCTACACAGSTGCCATCAA		29,259–29,286
E gene	Reverse primer	CTTTGAAATTTGGATCTTTGTCATCC	Envelope protein	29,315–29,290
	Forward primer	CCTATTTCTGAACATGACTACCAGATTG		25,924–25,951
	Probe	CACAGTCTTTTACTCCAGATTCCTTTTTCAG		25,993–25,961
Coman's N gene	Reverse primer	GTCTGAAGTGAAGTAACTGTGTAATACA	Nucleocapsid protein	26,022–25,995
	E_Sarbeco_F	ACAGGTACGTTAATAGTTAATAGCGT		26,269–26,294
	E_Sarbeco_P1	ACACTAGCCATCCTTACTGCGCTTCG		26,332–26,357
Coman's RdRp gene	E_Sarbeco_R	ATATTGCAGCAGTACGCACACA	RNA-dependent RNA polymerase	26,381–26,360
	RdRp_SARsR-F	GTGARATGGTCATGTGTGGCGG		15,431–15,452
	RdRp_SARsR-P2	CAGGTGGAACCTCATCAGGAGATGC		15,470–15,494
	RdRp_SARsR-R	CARATGTTAAASACACTATTAGCATA		15,530–15,505

\*Multiplex real-time reverse transcription PCR for influenza A virus, influenza B virus, and SARS-CoV-2. SARS-CoV-2, severe acute respiratory syndrome coronavirus 2.

†All probes labeled with the reporter dye Texas Red at the 5'-end and a Blackhole Quencher 2 at the 3'-end (LGC Biosearch Technologies, <https://www.biosearchtech.com>).

‡R indicates G/A single nucleotide polymorphism; S indicates G/C single nucleotide polymorphism.

§Nucleotide positions are indicated as location in the coding domain sequences of severe acute respiratory syndrome coronavirus 2 (Wuhan-Hu-1; GenBank accession no. NC045512).

**Appendix Table 2.** Confirmation of limits of detection of the Influenza SARS-CoV-2 Multiplex Assay\*

Virus strain, titer*	Cycle threshold values															
	Influenza A				Influenza B				SARS-CoV-2				RNase P (human)			
A/Illinois/20/2018_(H1N1)pdm09																
10 <sup>2.7</sup>	29.83	30.15	29.22	29.84	0	0	0	0	0	0	0	0	26.92	27.03	26.90	26.62
	29.98	29.15	30.35	30.00	0	0	0	0	0	0	0	0	26.97	26.26	27.33	26.47
	29.59	29.86	29.47	31.05	0	0	0	0	0	0	0	0	26.92	26.87	26.30	27.25
	29.24	29.74	29.70	29.45	0	0	0	0	0	0	0	0	26.82	26.61	26.47	26.43
10 <sup>2.0</sup>	29.86	28.51	29.81	29.48	0	0	0	0	0	0	0	0	26.72	26.76	26.58	26.48
	32.22	36.07	33.43	31.90	0	0	0	0	0	0	0	0	26.84	26.44	26.95	26.59
	32.80	34.74	32.89	33.42	0	0	0	0	0	0	0	0	26.28	26.36	26.65	26.74
	33.48	32.29	33.14	35.86	0	0	0	0	0	0	0	0	26.56	26.31	26.74	26.18
	32.81	33.99	35.33	34.00	0	0	0	0	0	0	0	0	26.60	26.47	26.52	26.76
	33.04	32.84	33.32	33.51	0	0	0	0	0	0	0	0	26.38	26.66	26.69	26.80
B/Colorado/06/2017_Victoria																
10 <sup>2.9</sup>	0	0	0	0	29.66	29.55	29.51	29.42	0	0	0	0	27.93	27.73	27.79	27.64
	0	0	0	0	29.52	29.63	29.63	29.46	0	0	0	0	27.73	28.13	27.84	27.51
	0	0	0	0	29.90	29.54	29.88	29.58	0	0	0	0	27.91	27.98	27.72	27.69
	0	0	0	0	29.39	29.55	29.74	29.31	0	0	0	0	27.46	27.8	27.58	27.53
10 <sup>2.2</sup>	0	0	0	0	29.36	29.38	29.82	29.79	0	0	0	0	27.8	27.55	27.51	27.58
	0	0	0	0	32.43	33.35	33.51	32.21	0	0	0	0	27.73	27.96	27.75	27.66
	0	0	0	0	32.81	33.04	31.95	32.65	0	0	0	0	27.73	28.06	27.76	27.54
	0	0	0	0	32.12	32.47	32.66	33.30	0	0	0	0	27.65	27.57	27.82	27.84
	0	0	0	0	32.48	32.99	32.57	32.75	0	0	0	0	27.81	27.74	27.7	27.72
	0	0	0	0	32.52	33.70	32.42	32.10	0	0	0	0	27.58	27.58	27.84	27.7
2019-nCoV/USA-WA1/2020																
10 <sup>1.0</sup>	0	0	0	0	0	0	0	0	32.15	35.05	32.48	32.43	28.55	28.49	28.51	28.33
	0	0	0	0	0	0	0	0	31.68	33.02	32.85	32.55	28.33	28.52	28.26	28.48
	0	0	0	0	0	0	0	0	31.74	33.34	33.33	31.81	28.63	28.84	28.34	28.28
	0	0	0	0	0	0	0	0	32.24	32.71	32.27	31.90	28.36	28.53	28.43	28.29
10 <sup>0.3</sup>	0	0	0	0	0	0	0	0	33.32	31.79	32.74	32.46	28.47	28.53	28.62	28.44
	0	0	0	0	0	0	0	0	0	34.20	34.46	34.16	28.16	28.44	28.68	28.55
	0	0	0	0	0	0	0	0	35.09	33.35	35.44	33.35	28.43	28.65	28.72	28.33
	0	0	0	0	0	0	0	0	34.94	36.59	36.13	34.11	28.14	28.37	28.48	28.29
	0	0	0	0	0	0	0	0	36.28	34.08	33.17	33.4	28.40	28.68	28.32	28.33
	0	0	0	0	0	0	0	0	34.16	35.73	35.30	34.72	28.40	28.27	28.25	28.56

\*Multiplex real-time reverse transcription PCR for influenza A virus, influenza B virus, and SARS-CoV-2. SARS-CoV-2, severe acute respiratory syndrome coronavirus 2.

†Viral titers are in relation to 50% tissue culture infectious dose, except for B/Colorado/06/2017 B/ Victoria, which is in relation to 50% egg infectious dose. Bolded values indicate limits of detection.

**Appendix Table 3. Coronavirus specificity evaluation of the Influenza SARS-CoV-2 Multiplex Assay\***

Coronavirus	Genera	GenBank accession no.	Infectious titers, ng/μL	Cycle threshold value									
				Influenza A			Influenza B			SARS-CoV-2			
HCoV 229E	Alphacoronavirus	KU291448	6.2	0	0	0	0	0	0	0	0	0	0
HCoV NL63	Alphacoronavirus	KY862074	2.75	0	0	0	0	0	0	0	0	0	0
HCoV HKU1	Group A betacoronavirus	MH940245	3.23	0	0	0	0	0	0	0	0	0	0
HCoV OC43	Group A betacoronavirus	KU131570	1.05	0	0	0	0	0	0	0	0	0	0
MERS-CoV	Group B betacoronavirus	NC_019843	5.4	0	0	0	0	0	0	0	0	0	0
SARS-CoV	Group B betacoronavirus	EU034725	ND	0	0	0	0	0	0	0	0	0	0
SARS CoV†	Strain Urbani	AY278741	NA	0	0	0	0	0	0	0	0	0	0

\*Multiplex real-time reverse transcription PCR for influenza A virus, influenza B virus, and SARS-CoV-2. NA, not applicable; ND, not determined; SARS-CoV-2, severe acute respiratory syndrome coronavirus 2.

†rRNA transcript.

**Appendix Table 4. Analytical specificity of the Influenza SARS-CoV-2 Multiplex Assay\***

Pathogen	Strain	GenBank accession no.	Titer†	Cycle threshold values		
				Influenza A	Influenza B	SARS-CoV-2
<b>Viruses</b>						
Influenza C	C/Minnesota/1/2016	EPI1033841	NA	0	0	0
	C/Minnesota/4/2015	EPI1033781	NA	0	0	0
	C/Minnesota/29/2015	EPI1033830	NA	0	0	0
Human adenovirus, type 1	Ad.71	EU934336	10 <sup>9.2</sup>	0	0	0
Human adenovirus, type 7a	S-1058	AY921616	10 <sup>7.1</sup>	0	0	0
Human parainfluenza 1	NA		3.0‡	0	0	0
Human parainfluenza 2	Greer	KT898924	10 <sup>3.1</sup>	0	0	0
Human parainfluenza 3	C-243	EU346887	10 <sup>7.9</sup>	0	0	0
Respiratory syncytial virus	CH93-18b	AF065252	10 <sup>6.8</sup>	0	0	0
Human rhinovirus A	1A		10 <sup>5.8</sup>	0	0	0
Enterovirus	Echo 6		10 <sup>6.9</sup>	0	0	0
Herpes simplex virus	KOS		10 <sup>8.4</sup>	0	0	0
Varicella zoster virus	AV92-3:H		10 <sup>4.4</sup>	0	0	0
Epstein-Barr virus	B95-8		1.7‡	0	0	0
Measles morbillivirus	Edmonston		10 <sup>5.2</sup>	0	0	0
Mumps virus	Enders		10 <sup>7.2</sup>	0	0	0
Cytomegalovirus	AD-169		10 <sup>6.9</sup>	0	0	0
<b>Bacteria</b>						
<i>Bordetella pertussis</i>	Tohama I		10 <sup>10.0</sup> §	0	0	0
<i>Chlamydia pneumoniae</i>	CM-1		40¶	0	0	0
<i>Corynebacterium diphtheriae</i>	NCTC 13129		57.4‡	0	0	0
<i>Escherichia coli</i>	K12		10 <sup>9.6</sup> §	0	0	0
<i>Streptococcus pyogenes</i>	7790-06		10 <sup>7.5</sup> §	0	0	0
<i>Haemophilus influenzae</i>	M15709		10 <sup>6.4</sup> §	0	0	0
<i>Lactobacillus plantarum</i>	NA		10 <sup>8.8</sup> §	0	0	0
<i>Legionella pneumophila</i>	Philadelphia-1		10 <sup>8.4</sup> §	0	0	0
<i>Moraxella catarrhalis</i>	M15757		10 <sup>9.5</sup> §	0	0	0
<i>Mycobacterium tuberculosis</i>	H37Ra		10 <sup>5.0</sup> §	0	0	0
<i>Mycoplasma pneumoniae</i>	PI 1428		10 <sup>9.0</sup> §	0	0	0
<i>Neisseria elongata</i>	NA		10 <sup>5.0</sup> §	0	0	0
<i>Neisseria meningitidis</i>	M2578		10 <sup>7.9</sup> §	0	0	0
<i>Pseudomonas aeruginosa</i>	NA		10 <sup>10.5</sup> §	0	0	0
<i>Staphylococcus aureus</i>	NA		10 <sup>10.7</sup> §	0	0	0
<i>Staphylococcus epidermidis</i>	NA		10 <sup>10.5</sup> §	0	0	0
<i>Streptococcus pneumoniae</i>	249-06		10 <sup>6.6</sup> §	0	0	0
<i>Streptococcus salivarius</i>	DSM 13084		109‡	0	0	0
<b>Yeast</b>						
<i>Candida albicans</i>	3147		10 <sup>8.5</sup> §	0	0	0

\*Multiplex real-time reverse transcription PCR for influenza A virus, influenza B virus, and SARS-CoV-2. NA, not available; SARS-CoV-2, severe acute respiratory syndrome coronavirus 2.

†Values are in relation to 50% tissue culture infectious dose, except as indicated.

‡ng/μL.

§CFU/mL.

¶Infectious units/mL.

**Appendix Table 5. In silico analysis of the primers and probe for severe acute respiratory syndrome coronavirus 2 in the Influenza SARS-CoV-2 Multiplex Assay\***

Component	No. sequences (%)				
	Nucleotide mismatch				Total
	0	1	2	>3	
Forward primer	404,998 (98.23)	7,209 (1.75)	75 (0.02)	11 (<0.01)	412,293 (100)
Probe	409,225 (99.26)	3,054 (0.74)	9 (<0.01)	4 (<0.01)	412,293 (100)
Reverse primer	405,169 (98.27)	7,091 (1.72)	25 (0.01)	8 (<0.01)	412,293 (100)

\*Multiplex real-time reverse transcription PCR for influenza A virus, influenza B virus, and SARS-CoV-2. SARS-CoV-2, severe acute respiratory syndrome coronavirus 2.

**Appendix Table 6.** In silico analysis of the primers and probe for severe acute respiratory syndrome coronavirus 2 in the Influenza SARS-CoV-2 Multiplex Assay, compared with variants\*

Component	No. sequences (%)				Total
	Nucleotide mismatch				
	0	1	2	≥3	
Forward primer	19,822 (99.85)	29 (0.15)	2 (0.01)	0	19,851 (100.00)
Probe	19,787 (99.68)	64 (0.32)	0	0	19,851 (100.00)
Reverse primer	19,805 (99.77)	46 (0.23)	0	0	19,851 (100.00)

\*Multiplex real-time reverse transcription PCR for influenza A virus, influenza B virus, and SARS-CoV-2. Studied strains comprise B.1.1.7, B.1.351, and P.1 variants of SARS-CoV-2. SARS-CoV-2, severe acute respiratory syndrome coronavirus 2.

**Appendix Table 7.** Evaluation of limits of detection using simulated co-infection in the Influenza SARS-CoV-2 Multiplex Assay\*

Viral titers (InfA/InfB/SARS-CoV-2)†	Cycle threshold values																	
	Multiplex									Singleplex								
	InfA			InfB			SARS-CoV-2			InfA			InfB			N1‡		
10 <sup>4.1</sup> /10 <sup>4.3</sup> /10 <sup>1.7</sup>	24.73	25.04	24.84	22.59	22.60	22.82	26.50	26.90	27.18	25.27	25.85	25.98	24.72	24.72	25.11	26.20	26.49	26.09
10 <sup>3.4</sup> /10 <sup>3.6</sup> /10 <sup>1.0</sup>	27.56	26.87	27.55	25.38	25.09	25.15	30.12	29.16	29.61	28.69	28.62	29.14	28.19	28.36	28.43	29.29	29.95	30.73
10 <sup>2.7</sup> /10 <sup>2.9</sup> /10 <sup>0.3</sup>	30.13	31.14	29.82	27.59	26.71	27.42	31.88	30.96	31.17	32.38	31.31	31.80	31.18	31.53	31.14	30.46	32.30	31.76
10 <sup>2.0</sup> /10 <sup>2.2</sup> /10 <sup>-0.4</sup>	35.32	33.30	33.01	30.35	30.40	30.72	34.17	35.03	0	34.47	34.68	35.14	34.72	34.16	36.94	34.16	0	0
10 <sup>1.3</sup> /10 <sup>1.5</sup> /10 <sup>-1.1</sup>	34.30	36.55	0	32.80	32.16	32.17	34.58	0	0	0	0	37.58	36.80	38.56	0	0	0	0

\*Multiplex real-time reverse transcription PCR for influenza A virus, influenza B virus, and SARS-CoV-2. Evaluation conducted in triplicate. Inf A, influenza A; InfB, influenza B; SARS-CoV-2, severe acute respiratory syndrome coronavirus 2.

†Viral concentrations in relation to 50% tissue culture infectious dose (A/Illinois/20/2018\_H1N1pdm09 or 2019-nCoV/USA-WA1/2020) or 50% egg infectious dose (B/Colorado/06/2017\_Victoria)

‡CDC 2019-nCoV Real-Time RT-PCR Diagnostic Panel (7). The InfA and InfB singleplex assays are components of the CDC Human Influenza Virus Real-Time RT-PCR Detection and Characterization Panel [510(k) no. K200370] (9).



**Appendix Table 8.** Comparison of the Influenza SARS-CoV-2 Multiplex Assay and singleplex assays using clinical influenza specimens\*

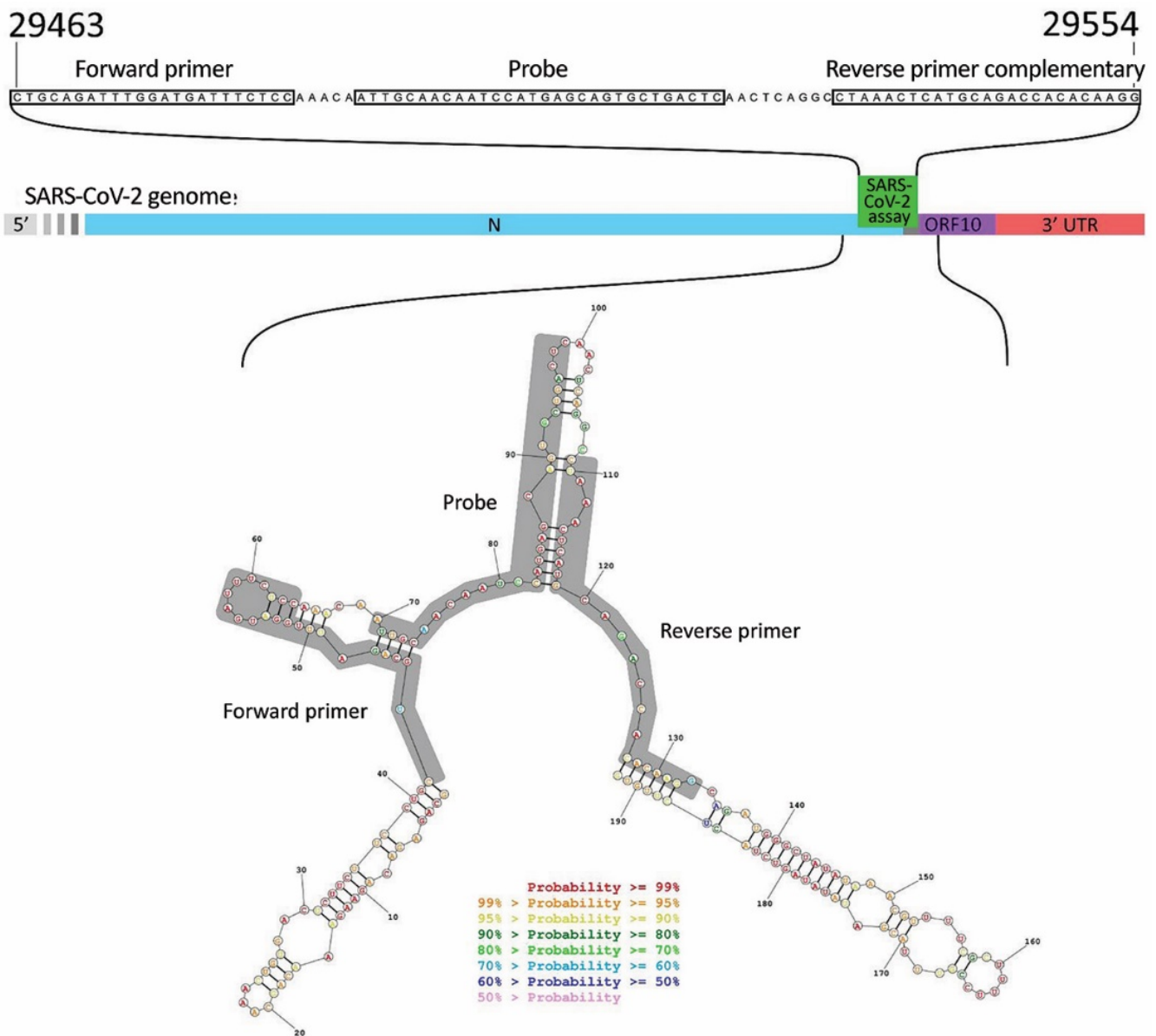
Sample ID	Lineage	Cycle threshold values				
		Multiplex			Singleplex	
		Influenza A	Influenza B	SARS-CoV-2	Influenza A	Influenza B
<b>Influenza A</b>						
InfA_1	A(H1N1)pdm09	22.40	0	0	22.32	0
InfA_2	A(H1N1)pdm09	31.31	0	0	30.04	0
InfA_3	A(H1N1)pdm09	26.70	0	0	25.96	0
InfA_4	A(H1N1)pdm09	29.48	0	0	28.93	0
InfA_5	A(H1N1)pdm09	27.64	0	0	27.08	0
InfA_6	A(H1N1)pdm09	25.42	0	0	24.94	0
InfA_7	A(H1N1)pdm09	25.71	0	0	25.97	0
InfA_8	A(H1N1)pdm09	29.35	0	0	29.32	0
InfA_9	A(H1N1)pdm09	28.13	0	0	27.82	0
InfA_10	A(H1N1)pdm09	30.47	0	0	29.33	0
InfA_11	A(H1N1)pdm09	30.88	0	0	30.13	0
InfA_12	A(H1N1)pdm09	30.11	0	0	29.50	0
InfA_13	A(H1N1)pdm09	29.72	0	0	29.05	0
InfA_14	A(H1N1)pdm09	32.73	0	0	29.34	0
InfA_15	A(H1N1)pdm09	24.28	0	0	24.50	0
InfA_16	H3N2	28.46	0	0	28.30	0
InfA_17	H3N2	25.55	0	0	25.20	0
InfA_18	H3N2	22.93	0	0	22.36	0
InfA_19	H3N2	20.75	0	0	20.54	0
InfA_20	H3N2	29.43	0	0	29.08	0
InfA_21	H3N2	29.17	0	0	28.60	0
InfA_22	H3N2	30.52	0	0	30.22	0
InfA_23	H3N2	29.07	0	0	29.34	0
InfA_24	H3N2	26.91	0	0	27.13	0
InfA_25	H3N2	22.29	0	0	22.05	0
InfA_26	H3N2	25.44	0	0	25.60	0
InfA_27	H3N2	20.53	0	0	20.30	0
InfA_28	H3N2	25.97	0	0	25.17	0
InfA_29	H3N2	20.04	0	0	20.52	0
InfA_30	H3N2	23.52	0	0	23.32	0
<b>Influenza B</b>						
InfB_1	B/Vic	0	23.61	0	0	22.77
InfB_2	B/Vic	0	26.70	0	0	26.39
InfB_3	B/Vic	0	27.78	0	0	27.09
InfB_4	B/Vic	0	22.35	0	0	21.64
InfB_5	B/Vic	0	19.11	0	0	18.14
InfB_6	B/Vic	0	25.29	0	0	24.85
InfB_7	B/Vic	0	20.40	0	0	19.55
InfB_8	B/Vic	0	24.59	0	0	24.22
InfB_9	B/Vic	0	22.32	0	0	20.39
InfB_10	B/Vic	0	19.42	0	0	17.68
InfB_11	B/Vic	0	23.73	0	0	23.06
InfB_12	B/Vic	0	26.89	0	0	25.85
InfB_13	B/Vic	0	22.58	0	0	22.03
InfB_14	B/Vic	0	23.00	0	0	22.25
InfB_15	B/Vic	0	26.23	0	0	25.11
InfB_16	B/Vic	0	25.67	0	0	25.88
InfB_17	B/Vic	0	21.79	0	0	20.75
InfB_18	B/Vic	0	24.24	0	0	22.97
InfB_19	B/Yam	0	23.56	0	0	22.76
InfB_20	B/Yam	0	26.34	0	0	25.87
InfB_21	B/Yam	0	23.05	0	0	22.38
InfB_22	B/Yam	0	27.67	0	0	27.52
InfB_23	B/Yam	0	25.39	0	0	25.20
InfB_24	B/Yam	0	27.83	0	0	27.50
InfB_25	B/Yam	0	34.36	0	0	35.48
InfB_26	B/Yam	0	24.43	0	0	24.01
InfB_27	B/Yam	0	30.65	0	0	30.63
InfB_28	B/Yam	0	20.40	0	0	19.79
InfB_29	B/Yam	0	21.22	0	0	20.67
InfB_30	B/Yam	0	22.48	0	0	21.74

\*Multiplex real-time reverse transcription PCR for influenza A virus, influenza B virus, and SARS-CoV-2. Singleplex assays comprise the CDC Flu rRT-PCR Dx Panel (9,15). B/Vic, B(Victoria); B/Yam, B(Yamaga); SARS-CoV-2, severe acute respiratory syndrome coronavirus 2.

**Appendix Table 9.** Comparison of the Influenza SARS-CoV-2 Multiplex Assay and singleplex assays using clinical SARS-CoV-2 specimens\*

Sample ID	Specimen type	Cycle threshold value					
		Multiplex			Singleplex		
		Influenza A	Influenza B	SARS-CoV-2	RNase P (human)	N1	RNase P (human)
1	Throat/NP	0	0	28.68	23.22	29.16	22.62
2	NP	0	0	24.36	22.80	24.72	22.91
3	NP	0	0	15.27	24.02	15.16	23.35
4	NP	0	0	28.76	23.55	28.63	22.46
5	NP	0	0	24.67	24.33	24.56	23.74
6	Throat/NP	0	0	22.05	26.18	22.20	25.50
7	NP/Oral	0	0	23.07	24.36	23.06	24.08
8	NP	0	0	14.88	22.27	15.24	22.02
9	Throat/NP	0	0	20.52	23.26	20.40	22.52
10	NP	0	0	15.41	34.94	15.84	29.61
11	NP	0	0	25.23	30.57	25.57	29.80
12	NP	0	0	27.86	24.14	28.54	23.37
13	NP	0	0	18.02	23.26	17.73	22.90
14	NP	0	0	18.00	25.25	18.08	25.00
15	NP	0	0	21.24	24.25	21.29	23.73
16	NP	0	0	15.06	22.68	15.39	22.54
17	Sputum	0	0	30.61	23.55	31.18	22.82
18	Sputum	0	0	27.37	21.78	26.69	21.12
19	Sputum	0	0	14.78	23.69	14.34	21.47
20	NP	0	0	30.60	25.06	29.20	24.56
21	OP	0	0	30.50	30.47	29.49	30.16
22	NP	0	0	23.03	22.28	21.92	21.99
23	NP	0	0	31.43	23.36	31.77	22.97
24	NP	0	0	18.02	22.18	17.89	22.01
25	NP	0	0	18.12	22.35	18.17	22.29
26	Oral swab	0	0	25.11	27.53	25.61	27.46
27	Oral swab	0	0	25.45	30.83	25.82	29.97
28	Oral swab	0	0	24.20	25.61	25.05	25.16
29	Oral swab	0	0	22.51	26.09	23.38	25.44
30	Oral swab	0	0	19.31	26.12	19.68	26.26
31	Oral swab	0	0	24.88	26.75	25.24	26.88
32	NP	0	0	25.65	22.09	25.31	21.87
33	Oral swab	0	0	24.57	29.43	25.10	28.86

\*Multiplex real-time reverse transcription PCR for influenza A virus, influenza B virus, and SARS-CoV-2. Singleplex assays comprise the CDC 2019-nCoV Real-Time RT-PCR Diagnostic Panel (7). NP, nasopharyngeal swab; OP, oropharyngeal swab; SARS-CoV-2, severe acute respiratory syndrome coronavirus 2.



**Appendix Figure.** Relative genomic position of SARS-CoV-2 target used by the Influenza SARS-CoV-2 Multiplex Assay. N, nucleocapsid protein gene; ORF10, open reading frame 10; SARS-CoV-2, severe acute respiratory syndrome coronavirus 2; UTR, untranslated region.