

Addressing COVID-19 Misinformation on Social Media Preemptively and Responsively

Emily K. Vraga, Leticia Bode

Efforts to address misinformation on social media have special urgency with the emergence of coronavirus disease (COVID-19). In one effort, the World Health Organization (WHO) designed and publicized shareable infographics to debunk coronavirus myths. We used an experiment to test the efficacy of these infographics, depending on placement and source. We found that exposure to a corrective graphic on social media reduced misperceptions about the science of 1 false COVID-19 prevention strategy but did not affect misperceptions about prevention of COVID-19. Lowered misperceptions about the science persisted ≥ 1 week later. These effects were consistent when the graphic was shared by the World Health Organization or by an anonymous Facebook user and when the graphics were shared preemptively or in response to misinformation. Health organizations can and should create and promote shareable graphics to improve public knowledge.

The uncertainty around the emergence of severe acute respiratory syndrome coronavirus 2, a novel coronavirus that causes coronavirus disease (COVID-19), has led to the rapid and widespread diffusion of misinformation about the virus, its origins, and effective prevention and treatment strategies (1,2). Misinformation is not a new problem, but it poses particular challenges for infectious disease management when public acceptance is required for prevention behaviors such as social distancing or wearing a mask.

As part of the effort to promote good information over misinformation, the World Health Organization (WHO) has created and publicized shareable infographics (“mythbusters”) that debunk specific myths about COVID-19 (3). Research regarding the efficacy of health organization websites designed to debunk misinformation has yielded mixed results. Material

from the Centers for Disease Control and Prevention (CDC) regarding the influenza vaccine successfully reduced misperceptions that the vaccine can cause influenza or is unsafe but also reduced intentions to get the vaccine among those concerned about its side effects (4). Likewise, WHO material debunking Zika virus rumors did not affect most targeted misperceptions and also reduced the accuracy of related beliefs about Zika virus (5). These examples reinforce concern that repeating false information, even to correct it, can strengthen belief in the myths (6,7).

In this study, we considered the effectiveness of sharing WHO’s myth correction graphics on social media specifically. This project differed from previous research in 2 ways. First, the graphic used in every correction was clearly labeled as coming from WHO, which may boost effectiveness compared with research that did not prominently display the source of the corrective material (4,5). Second, we considered exposure to someone sharing a specific correction graphic on social media, rather than to website material more generally. Previous research has found that observational correction, which occurs when persons see misinformation being corrected on social media and update their own attitudes in response, is effective for emerging infectious disease topics such as Zika virus (8,9) and for infectious diseases such as influenza (10). We aimed to determine the effectiveness of social media sharing of a graphic that debunks 2 related coronavirus myths.

Methods

Study Design

In this study we considered the effectiveness of sharing a WHO graphic (on social media) that debunks 2 related coronavirus myths: that taking a hot bath both raises body temperature and prevents coronavirus infection (Figure). Scientific evidence suggests that hot baths can minimally affect body temperature; studies have found a change of roughly 0.5°C –1.0°C in body

Author affiliations: University of Minnesota, Minneapolis, Minnesota, USA (E.K. Vraga); Georgetown University, Washington, DC, USA (L. Bode)

DOI: <https://doi.org/10.3201/eid2702.203139>

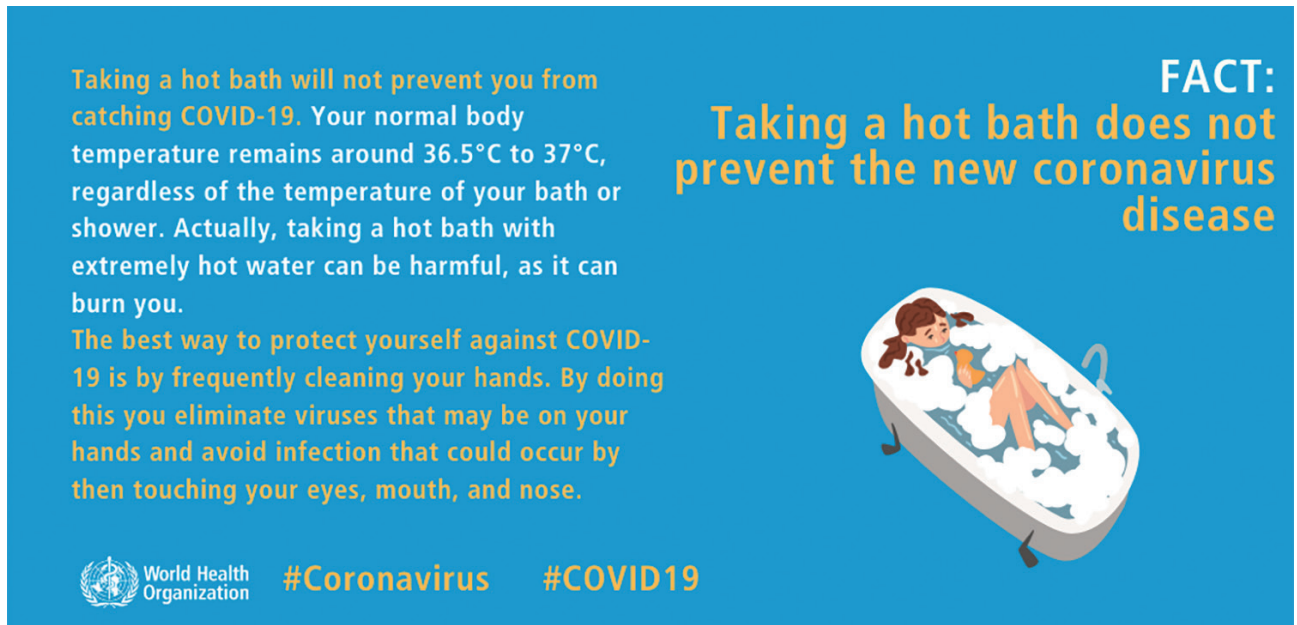


Figure. Original World Health Organization myth buster graphic used in study of addressing COVID-19 misinformation on social media. COVID-19, coronavirus disease.

temperature (11,12). Temperatures needed to deactivate coronavirus are typically $>56^{\circ}\text{C}$ (13–15), which exceed safe bath temperatures; scalding is likely within 10 minutes at 48°C (16). In other words, this graphic explains the science for why hot baths do not prevent COVID-19 and directly disputes the prevention efficacy of baths. The graphic follows many best practices for combating misinformation: it is fact-based, colorful, simple, and easy to understand; focuses on the fact rather than the myth; and includes a label signaling that it comes from an expert source (7,9,10). These aspects fulfill many of the 5 Cs of correction: is consensus based, includes corroborating evidence, and is consistent, coherent, and credible (6). Addressing the science behind why hot baths do not prevent COVID-19 infection also corroborates the argument with a science-based alternative explanation shown to boost correction effectiveness (6,7,17). Therefore, we expected that exposure to a post containing this graphic would reduce the 2 misperceptions among persons targeted by the graphic as compared with persons who did not see any information on the topic.

Such a graphic might be shared in multiple ways, which we also tested. The first factor manipulates whether the graphic was shared preemptively on a social media feed, compared with whether it was shared in response to misinformation on the topic (we refer to this as placement). When offered preemptively, a user shares the graphic as a social media post without addressing the misinformation directly.

In this case, it might function like a fact check, addressing an inaccurate claim made elsewhere but not directly linking to that claim on the social media platform (18–20). Alternatively, the graphic could be shared in response to someone posting misinformation. These responsive corrections are a relatively common behavior (21) and reduce belief in misinformation among other social media users who witness the correction (8,9,22). Given the relative dearth of research in this space, we explored whether preemptive or responsive posting strategies are more effective in reducing misperceptions.

The second factor manipulates who shares the information. Previous research on correction has emphasized the ability of an expert source like WHO to address misinformation (7,22,23) but offers mixed evidence about the effectiveness of a single user in correcting misinformation on social media (22,24). Therefore, we expect that a graphic shared by WHO will more effectively reduce misperceptions than the same graphic (still with WHO branding) shared by an unknown Facebook user.

In addition, we explored the combination of these 2 elements: who shared a graphic and whether it was shared in response or preemptively. Although it is not clear how these 2 elements interact, several possibilities seem plausible. For instance, it might seem strange to see a powerful organization like WHO responding directly to misinformation, making this form of correction less effective for WHO but not for

users. Alternatively, research suggests that a user debunking a myth preemptively using facts might be less effective than when sharing a correction after misinformation (24), but we do not have research to determine whether this pattern should similarly hold for organizations. Although research does not clearly specify what to expect, the interaction between source and type of sharing is worth exploring.

Finally, not enough correction research has been done to investigate the enduring effect of exposure to misinformation and its correction. Some research suggests that corrections fade over time, and the myth could actually be reinforced through an illusory truth effect of seeing misinformation repeated (6,7). Alternatively, if the correction follows best practices by emphasizing facts and providing an alternative explanation, as we believe the WHO graphic does, lowered misperceptions may endure over time. Therefore, we tested whether the effects of correction endure over 1 week.

Experimental Design

An experimental design enabled us to best consider the effects of who corrected and whether the correction was in response to misinformation or independent of it. This experiment received approval from the Institutional Review Board at the University of Minnesota on April 27, 2020.

We fielded a survey experiment to 1,596 participants during May 4–5, 2020 (wave 1) using Amazon's Mechanical Turk service (<https://www.mturk.com>). Of these, 1,453 were willing to continue participation and 1,419 passed an attention check in the first wave of the study; these participants were contacted 1 week later (on May 12, with a recontact on May 14) for a follow-up survey (wave 2). A total of 1,122 participants (79%) completed wave 2 an average of 7.5 days later (mean 7.54, SD 0.75).

Each participant viewed a screenshot of a Facebook feed and was asked to read it as if it were on their own feed (Appendix 1, <https://wwwnc.cdc.gov/EID/article/27/2/20-3139-App1.pdf>). The experiment consisted of 6 experimental conditions (Appendix 2, <https://wwwnc.cdc.gov/EID/article/27/2/20-3139-App2.pdf>): a pure control condition, a misinformation-only condition, and 4 correction conditions manipulated in a crossed factorial design with the 2 factors we described earlier: placement (preemptive versus responsive) and source (WHO versus user).

In the pure control condition, participants viewed 5 control posts on the simulated feed. In the misinformation-only condition, they viewed the

same 5 posts, with the addition of a misinformation post: a status posted by a user saying "This is such an easy thing to do! Take a hot bath to keep yourself healthy and protect you from coronavirus!" on a bright pink background.

For all correction conditions, participants viewed the same WHO infographic, which prominently labels the source, to isolate the effects of who is sharing the graphic rather than the graphic itself. Those who viewed the preemptive correction saw the correction infographic as the second post in the feed, posted either by WHO or by a social media user but with no misinformation post as part of the feed. Those who viewed the responsive correction saw the misinformation post described earlier, with the corrective graphic posted in response, either by a user or by WHO in the form of a WHO "info bot." Although no such bot exists as far as we know, WHO and Facebook have partnered to offer a Facebook messenger bot to answer user questions about coronavirus (25), so this sort of correction is plausible, if not currently being deployed. Moreover, a bot offers a scalable and realistic responsive mechanism, rather than assuming that WHO would directly respond to individual Facebook users on their official feeds.

After exposure to the simulated Facebook feed in wave 1, participants answered questions regarding their beliefs regarding the myths targeted by the WHO graphic to measure misperceptions about body temperature and COVID-19 prevention (Appendix 3, <https://wwwnc.cdc.gov/EID/article/27/2/20-3139-App3.pdf>). These questions were replicated in wave 2 of the study.

Sample Characteristics

Of the 1,596 participants who completed our initial survey, participants skewed male (62.9%) and highly educated (72% had a bachelor's degree or higher). Participants averaged 37 years of age (mean 36.94 years, SD 11.31 years), were relatively diverse in terms of race and ethnicity (18.5% African-American, 7.9% Asian-American, 70.6% White; 21.3% considered themselves Hispanic or Latino) and income (median \$50,000–\$75,000) and leaned Democratic (5-point scale, mean 3.73, SD 2.00) and liberal (5-point scale, mean 3.69, SD 1.93). These characteristics were consistent among participants who completed the second wave of the study (Appendix 2 Table 1).

Statistical Analysis

We performed 2 sets of analyses based on our preregistration (26). First, we compared each of the experimental conditions to the pure control condition using

linear regression to determine whether the corrections reduced misperceptions as compared with baseline beliefs (absent any information regarding hot baths or COVID-19). We replicated these analyses for wave 2. Second, we isolated the effects of source and placement using a regression approach (not preregistered) excluding both the control and misinformation-only conditions, and entering 2 factors (placement and source) as well as the interaction between the two.

Results

Wave 1

First, we tested the effects of correction on misperceptions related to the effects of a hot bath on body temperature and COVID-19 prevention for wave 1. We limited these regression analyses to the 1,543 persons who passed a premanipulation attention check (Appendix 4, <https://wwwnc.cdc.gov/EID/article/27/2/20-3139-App4.pdf>). Exposure to the WHO graphic in any condition reduced misperceptions that a hot bath will raise body temperature as compared with the control, but had no effects on misperceptions that a hot bath will prevent COVID-19 infection (Table 1). When comparing the types of correction to each other, we found no differences by either source or placement, nor by the interaction between the 2 categories (Table 2). In other words, corrections were equally effective for body temperature misperceptions (and ineffective for COVID-19 prevention misperceptions) whether they came from a user or from WHO and when they were preemptive as well as responsive.

Wave 2

We replicated these analyses with the 1,110 participants who completed the follow-up survey and passed the attention check for wave 2 (12 participants failed the attention check in wave 2), controlling for the amount of time between taking the 2 waves of the survey. We found that exposure to the

WHO preemptive, WHO responsive, or user responsive corrections all produced lower misperceptions than the control condition at wave 2 for body temperature misperceptions (Table 3). We also found that those exposed to the WHO responsive correction had significantly lower COVID-19 prevention misperceptions 1 week later than those in the control condition; results showed an average decline of 11% in COVID-19 prevention misperceptions from the control to the WHO responsive correction. However, the overall model predicting COVID-19 misperceptions was not significant, meaning that there were no differences in means averaged across the 6 experimental conditions even though there was a significant difference in directly comparing the WHO responsive correction to control condition, so this result must be interpreted with caution. We again found no significant differences in either type of misperceptions based on the source of the graphic (WHO versus Facebook user) or whether it was offered preemptively or responsively (Table 4).

Discussion

Efforts to address misinformation on social media have taken on special urgency with the emergence of COVID-19. Mitigating the risks associated with COVID-19 requires sustained public action, so misinformation that promotes false preventives or cures can hinder necessary behaviors to reduce the spread of the disease. In this study, we tested whether sharing graphics from WHO designed to address COVID-19 misinformation can reduce misperceptions. Our results suggest that although these graphics do not affect all misperceptions, reductions in misperceptions that do occur persist over time.

Notably, exposure to the WHO graphic in any form reduced immediate misperceptions about the science of a false preventive for COVID-19 (that a hot bath can raise body temperature), and this reduction was maintained for at least 1 week for 3 of the 4 correction conditions. This finding suggests that understanding of

Table 1. Comparing participants in correction conditions to control condition for wave 1 using regression analysis in study of addressing COVID-19 misinformation on social media*

Condition	Body temperature		COVID-19 prevention	
	Beta	SE	Beta	SE
Pure control [reference]	–	–	–	–
Misinformation only	–0.06	0.08	–0.13	0.09
WHO preemptive	–0.40‡	0.09	–0.12	0.09
User preemptive	–0.26†	0.08	–0.10	0.09
WHO responsive	–0.46‡	0.08	–0.14	0.09
User responsive	–0.30‡	0.08	–0.05	0.09
Adjusted R ²	0.028‡		0.000	

*Adjusted R² indicates the variance explained by the overall model. COVID-19, coronavirus disease; WHO, World Health Organization.

†p<0.01.

‡p<0.001.

RESEARCH

Table 2. Comparing participants among the 4 correction conditions for wave 1 using regression analysis in study of addressing COVID-19 misinformation on social media*

Condition	Body temperature		COVID-19 prevention	
	Beta	SE	Beta	SE
WHO (vs. user)	-0.13	0.11	-0.03	0.11
Responsive (vs. preemptive)	-0.04	0.11	0.05	0.11
Interaction	-0.03	0.15	-0.06	0.16
Adjusted R ²	0.002		0.000	

*Adjusted R² indicates the variance explained by the overall model. COVID-19, coronavirus disease; WHO, World Health Organization.

the science behind why hot baths do not prevent COVID-19 prevention does not deteriorate rapidly.

Although these effects on reducing science-related misperceptions show the promise of the WHO graphics as myth busters on social media, we did not see a parallel reduction in the related misperceptions regarding prevention efficacy (that a hot bath will prevent COVID-19 infection). We offer several post hoc explanations for these findings. First, we suspect that a floor effect may partially explain these null effects; even in the control condition in wave 1, participants were largely well informed, rating the argument that a hot bath can prevent COVID-19 infection as at least probably false (55.8% had an average score ≤2 or less on a scale of 1, definitely false, to 5, definitely true). In contrast, only 17.5% believed that the claim that a hot bath can raise body temperature was probably false, offering more leverage to change beliefs. Second, motivated reasoning may make persons more resistant to updating beliefs as issues around COVID-19 and the WHO become more politicized in the United States (27); this motivated reasoning is likely less operant for the science of why such prevention is not effective. Third, persons may have thought that the science regarding hot baths and their effects on body temperature is better established given longstanding research (11,12), boosting confidence in the validity of the correction. Given high levels of scientific as well as public uncertainty regarding COVID-19 (28), the public may have been less convinced regarding the scientific evidence that a hot bath does not prevent COVID-19.

Finally, the fact that a hot bath does not raise body temperature may not be the only (or even the most prominent) reason that persons may believe that taking a hot bath decreases the risk of COVID-19 infection. A supplemental analysis (Appendix 5 Table 1, <https://wwwnc.cdc.gov/EID/article/27/2/20-3139-App5.pdf>) provides some evidence for this explanation. In the pure control condition, the correlation between misperceptions that a hot bath raises body temperature and a hot bath can prevent COVID-19 is not significant (Pearson’s correlation coefficient $r = 0.06$; $p = 0.16$). In the misinformation-only condition, the correlation is not significantly stronger than in the control condition ($p = 0.27$). However, for both WHO correction conditions, the correlation is significantly stronger than both the pure control and misinformation conditions ($p < 0.05$). This preliminary evidence suggests that the correction, especially when shared by WHO, helps participants mentally link the science claim and the prevention claim; however, this explanation accounts for, at most, 18% of variance in COVID-19 prevention beliefs. Therefore, the explanation for why hot baths do not prevent COVID-19 is not the only factor in persons’ beliefs about prevention efficacy.

These effects were consistent whether the graphic was shared by WHO itself or by another user. We suspect the similar effects between users and WHO, in contrast to earlier research suggesting experts were more effective than users (22,23), may result from the prominent labeling of WHO within the graphic itself, boosting the credibility of the post. Therefore,

Table 3. Comparing participants in correction conditions to control condition for wave 2 using regression analysis in study of addressing COVID-19 misinformation on social media*

Condition	Body temperature		COVID-19 prevention	
	Beta	SE	Beta	SE
Time gap	0.05	0.04	-0.01	0.04
Pure control [reference]	—	—	—	—
Misinformation only	-0.09	0.10	-0.20	0.10
WHO preemptive	-0.29†	0.11	-0.13	0.11
User preemptive	-0.08	0.11	-0.09	0.10
WHO responsive	-0.35†	0.11	-0.22‡	0.10
User responsive	-0.21‡	0.11	-0.10	0.11
Adjusted R ²	0.010†		0.001	

*Adjusted R² indicates the variance explained by the overall model. COVID-19, coronavirus disease; WHO, World Health Organization.

† $p < 0.01$.

‡ $p < 0.05$.

Table 4. Comparing participants among the 4 correction conditions for wave 2 using regression analysis in study of addressing COVID-19 misinformation on social media*

Condition	Body temperature		COVID-19 prevention	
	Beta	SE	Beta	SE
Gap	0.09	0.06	-0.01	0.06
WHO (vs. user)	-0.21	0.13	-0.05	0.13
Responsive (vs. preemptive)	-0.14	0.13	-0.01	0.13
Interaction	0.08	0.19	-0.07	0.18
Adjusted R ²	0.006		0.000	

*Adjusted R² indicates the variance explained by the overall model. COVID-19, coronavirus disease; WHO, World Health Organization.

mobilizing users to share WHO's graphics may produce similar effects in reducing misperceptions.

We found limited evidence that preemptive corrections differ in their effectiveness from reactive corrections. Preemptive and responsive corrections are equally effective when considering whether hot baths affect body temperature, both immediately and over time. Likewise, both are unsuccessful in affecting misperceptions about the efficacy of hot baths to prevent COVID-19 infection immediately after exposure to the correction. If preemptive corrections are effective in reducing misperceptions for (some) myths, persons need not wait until seeing someone share misinformation but can share the posts created by official expert organizations to address misperceptions in society at large. Thus, more attention is needed to find ways to motivate persons to share those types of corrections on their feeds.

However, the reactive correction addresses both the prevention efficacy of a hot bath (which is raised by the misinformation post) and the science behind this explanation, which is not addressed in the misinformation post. If the misinformation had also offered an explanation for why a hot bath supposedly reduces COVID-19 risk through raising body temperature, perhaps a reactive correction would be more effective. Although research suggests that false cures and preventives are a major subset of COVID-19 misinformation (2), these studies do not elaborate on whether the misinformation contains false claims about the science behind the myth. We suspect that providing false explanations is a subset of misinformation claims and therefore chose to have the misinformation post include only the COVID-19 prevention myth to enhance external validity. Best practices for correction suggest that including an alternative explanation and corroborating evidence enhances the power of corrections (6,7,17). Furthermore, emerging research suggests that correcting a related myth not raised in the misinformation can reduce misperceptions on that related myth, serving as an alternative form of preemptive correction (29).

We did find 1 case in which a responsive correction from WHO may be more effective than the other

corrections: exposure to the WHO responsive condition reduces misperceptions that a hot bath can prevent COVID-19 infection as compared with the control condition 1 week later, although this result must be interpreted with caution given the insignificance of the model overall and the limited amount of variance explained. If this result holds, it could be that the WHO responsive condition is the most memorable, and therefore had the most lasting effect on misperceptions, which future research should test.

We also found that both body temperature and COVID-19 prevention misperceptions were lower in wave 2 than in wave 1 for both the control and misinformation conditions (Appendix 5 Table 2). We suspect that the debriefing that all participants viewed at the end of wave 1 of the study, which included the WHO graphic and explained the myth, functioned as a correction itself (as intended to reduce potential misperceptions). Therefore, it is noteworthy that some correction conditions reduced hot bath misperceptions even further in wave 2 compared with the control, which reinforces the value of multiple corrections (7,22).

This study's limitations suggest caution in interpreting our findings. First, we relied on a diverse but unrepresentative sample of the US public, most notably skewing educated and male. Future research should explore these effects among a representative sample and samples outside the United States, including countries where the worst of the pandemic has passed and ones that are struggling to contain new outbreaks, to examine how these contexts affect the relationships we observed here. Second, although our study suggests that the WHO graphics have potential given their effects on body temperature misperceptions, low levels of initial belief that hot baths can prevent COVID-19 limited our ability to perceive potential effects on prevention efficacy. Similarly, the post promoting misinformation about hot baths preventing COVID-19 was largely not persuasive in generating misperceptions. Future research should consider efforts to debunk more prominent or plausible COVID-19 myths. Third, we selected a myth with little partisan divide; we cannot speak to whether these

graphics would be effective for politically polarized myths (11). Fourth, the effect sizes explained were relatively small, so corrections should be deployed as part of a larger health communication strategy for promoting accurate COVID-19 information.

Despite these limitations, this study offers several practical and theoretical advancements. First, we found little evidence of a backfire effect in promoting misperceptions of sharing the WHO's infographics on social media. This finding not only fits with increasing evidence about the rarity of backfire effects (30) but is also reassuring that sharing the graphics at least does no harm. Second, we find that preemptively sharing these graphics can be effective. Users and organizations can debunk misinformation circulating in society by sharing high-quality information on social media emphasizing the facts without waiting to see it shared directly in their feeds, which expands the opportunities for observational correction to occur. Third, we found that a WHO bot that directly responds to misinformation may be a particularly effective technique. Partnerships with platforms may enable these automated responses to prominent myths, furthering the reach of expert organizations. Creating easily shared graphics that promote facts in spaces in which misinformation abounds appears promising as part of a broader strategy to enable more efficient and effective corrections on social media.

Funding for this project was provided by the University of Minnesota and Georgetown University.

About the Authors

Dr. Vraga is an associate professor at the Hubbard School of Journalism and Mass Communication at the University of Minnesota, where she holds the Don and Carole Larson Professorship in Health Communication. Her research tests methods to correct health misinformation on social media, to limit biased processing of news messages, and to encourage attention to more diverse content online.

Dr. Bode is a Provost's Distinguished Associate Professor in the Communication, Culture, and Technology master's program at Georgetown University. She researches the intersection of communication, technology, and political behavior, emphasizing the role communication and information technologies may play in the acquisition, use, effects, and implications of political information and misinformation.

References

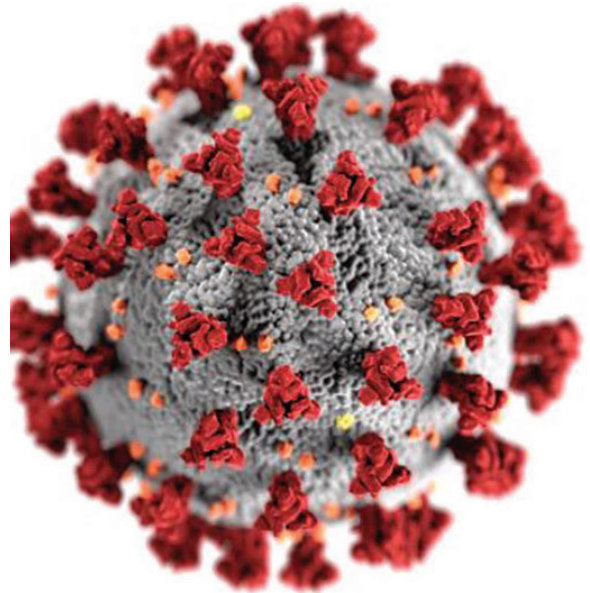
1. Starbird K, Spiro E, West J. This covid-19 misinformation went viral. Here's what we learned. 2020 May 8 [cited 2020 Jun 8]. <https://www.washingtonpost.com/politics/2020/05/08/this-covid-19-misinformation-went-viral-heres-what-we-learned/>

2. Brennen JS, Simon FM, Howard PN, Nielsen RK. Types, sources, and claims of COVID-19 misinformation. Reuters Institute. 2020 [cited 2020 Apr 15]. http://www.primaonline.it/wp-content/uploads/2020/04/COVID-19_reuters.pdf
3. World Health Organization. Coronavirus disease (COVID-19) advice for the public: myth busters. 2020 [cited 2020 Apr 2]. <https://www.who.int/emergencies/diseases/novel-coronavirus-2019/advice-for-public/myth-busters>
4. Nyhan B, Reifler J. Does correcting myths about the flu vaccine work? An experimental evaluation of the effects of corrective information. *Vaccine*. 2015;33:459-64. <https://doi.org/10.1016/j.vaccine.2014.11.017>
5. Carey JM, Chi V, Flynn DJ, Nyhan B, Zeitzoff T. The effects of corrective information about disease epidemics and outbreaks: evidence from Zika and yellow fever in Brazil. *Sci Adv*. 2020;6:eaaw7449. <https://doi.org/10.1126/sciadv.aaw7449>
6. Schwarz N, Newman E, Leach W. Making the truth stick and the myths fade: lessons from cognitive psychology. *Behav Sci Policy*. 2016;2:85-95. <https://doi.org/10.1353/bsp.2016.0009>
7. Lewandowsky S, Ecker UK, Seifert CM, Schwarz N, Cook J. Misinformation and its correction: continued influence and successful debiasing. *Psychol Sci Public Interest*. 2012;13:106-31. <https://doi.org/10.1177/1529100612451018>
8. Bode L, Vraga EK. See something, say something: correction of global health misinformation on social media. *Health Commun*. 2018;33:1131-40. <https://doi.org/10.1080/10410236.2017.1331312>
9. Vraga EK, Bode L. I do not believe you: how providing a source corrects health misperceptions across social media platforms. *Inf Commun Soc*. 2018;21:1337-53. <https://doi.org/10.1080/1369118X.2017.1313883>
10. Vraga EK, Bode L, Tully M. Creating news literacy messages to enhance expert corrections of misinformation on Twitter. *Commun Res*. 2020 Jan 30 [Epub ahead of print]. <https://doi.org/10.1177/0093650219898094>
11. Dorsey CM, Teicher MH, Cohen-Zion M, Stefanovic L, Satlin A, Tartarini W, et al. Core body temperature and sleep of older female insomniacs before and after passive body heating. *Sleep*. 1999;22:891-8. <https://doi.org/10.1093/sleep/22.7.891>
12. Dorsey CM, Lukas SE, Teicher MH, Harper D, Winkelman JW, Cunningham SL, et al. Effects of passive body heating on the sleep of older female insomniacs. *J Geriatr Psychiatry Neurol*. 1996;9:83-90. <https://doi.org/10.1177/089198879600900203>
13. Duan SM, Zhao XS, Wen RF, Huang JJ, Pi GH, Zhang SX, et al.; SARS Research Team. Stability of SARS coronavirus in human specimens and environment and its sensitivity to heating and UV irradiation. *Biomed Environ Sci*. 2003; 16:246-55.
14. Darnell ME, Subbarao K, Feinstone SM, Taylor DR. Inactivation of the coronavirus that induces severe acute respiratory syndrome, SARS-CoV. *J Virol Methods*. 2004; 121:85-91. <https://doi.org/10.1016/j.jviromet.2004.06.006>
15. Chan KH, Sridhar S, Zhang RR, Chu H, Fung AY, Chan G, et al. Factors affecting stability and infectivity of SARS-CoV-2. *J Hosp Infect*. 2020;106:226-31. <https://doi.org/10.1016/j.jhin.2020.07.009>
16. Shields WC, McDonald E, Frattaroli S, Perry EC, Zhu J, Gielen AC. Still too hot: examination of water temperature and water heater characteristics 24 years after manufacturers adopt voluntary temperature setting. *J Burn Care Res*. 2013;34:281-7. <https://doi.org/10.1097/BCR.0b013e31827e645f>

17. Walter N, Murphy ST. How to unring the bell: a meta-analytic approach to correction of misinformation. *Commun Monogr.* 2018;85:423–41. <https://doi.org/10.1080/03637751.2018.1467564>
18. Amazeen MA, Thorson E, Muddiman A, Graves L. Correcting political and consumer misperceptions: the effectiveness and effects of rating scale versus contextual correction formats. *Journalism Mass Commun Q.* 2018;95:28–48. <https://doi.org/10.1177/1077699016678186>
19. Hameleers M, van der Meer TGLA. Misinformation and polarization in a high-choice media environment: how effective are political fact-checkers? *Communic Res.* 2020;47:227–50. <https://doi.org/10.1177/0093650218819671>
20. Walter N, Cohen J, Holbert RL, Morag Y. Fact-checking: a meta-analysis of what works and for whom. *Polit Commun.* 2020;37:350–75. <https://doi.org/10.1080/10584609.2019.1668894>
21. Bode L, Vraga EK. Americans are fighting coronavirus misinformation on social media. 2020 May 7 [cited 2020 May 22]. <https://www.washingtonpost.com/politics/2020/05/07/americans-are-fighting-coronavirus-misinformation-social-media/>
22. Vraga EK, Bode L. Using expert sources to correct health misinformation in social media. *Sci Commun.* 2017;39:621–45. <https://doi.org/10.1177/1075547017731776>
23. van der Meer TGLA, Jin Y. Seeking formula for misinformation treatment in public health crises: the effects of corrective information type and source. *Health Commun.* 2020;35:560–75. <https://doi.org/10.1080/10410236.2019.1573295>
24. Vraga EK, Kim SC, Cook J, Bode L. Testing the effectiveness of correction placement and type on Instagram. *Int J Press/Polit.* 2020;25:632–52. <https://doi.org/10.1177/1940161220919082>
25. World Health Organization. WHO launches a chatbot on Facebook Messenger to combat COVID-19 misinformation. 2020 Apr 15 [cited 2020 Jun 4]. <https://www.who.int/news-room/feature-stories/detail/who-launches-a-chatbot-powered-facebook-messenger-to-combat-covid-19-misinformation>
26. Open Science Framework. Using expert graphics to debunk COVID-19 misinformation on Facebook. 2020 [cited 2020 May 5]. <https://osf.io/gvucy>
27. Pew Research Center for the People and the Press. Republicans, Democrats move even further apart in coronavirus concerns. 2020 Jun 25 [cited 2020 Jun 26]. <https://www.people-press.org/2020/06/25/republicans-democrats-move-even-further-apart-in-coronavirus-concerns>
28. Balog-Way DH, McComas KA. COVID-19: Reflections on trust, tradeoffs, and preparedness. *J Risk Res.* 2020 Apr 27 [Epub ahead of print]. <https://doi.org/10.1080/13669877.2020.1758192>
29. Bode L, Vraga EK, Tully M. Do the right thing: tone may not affect correction of misinformation on social media. *Harvard Kennedy School Misinformation Review.* 2020 Jun 11 [cited 2020 Jun 24]. <https://misinforeview.hks.harvard.edu/article/do-the-right-thing-tone-may-not-affect-correction-of-misinformation-on-social-media>
30. Wood T, Porter E. The elusive backfire effect: mass attitudes' steadfast factual adherence. *Polit Behav.* 2019;41:135–63. <https://doi.org/10.1007/s11109-018-9443-y>

Address for correspondence: Emily Vraga, University of Minnesota, 338 Murphy Hall, 206 Church St, Minneapolis, MN 55455, USA; email: ekvraga@umn.edu

EID Podcast A Critique of Coronavirus



Humans have spent eons—imagining—and experiencing—outbreaks of disease. Now that the COVID-19 pandemic has reached our doorstep, it's jarring to think about how this virus is eerily different from the pandemics of popular imagination.

In this EID podcast, Dr. Elana Osen, a specialty registrar at St. George's University Hospital in London, reads a poem she wrote about her experience of the COVID-19 pandemic.

Visit our website to listen:
<https://go.usa.gov/xwjzs>

**EMERGING
INFECTIOUS DISEASES®**

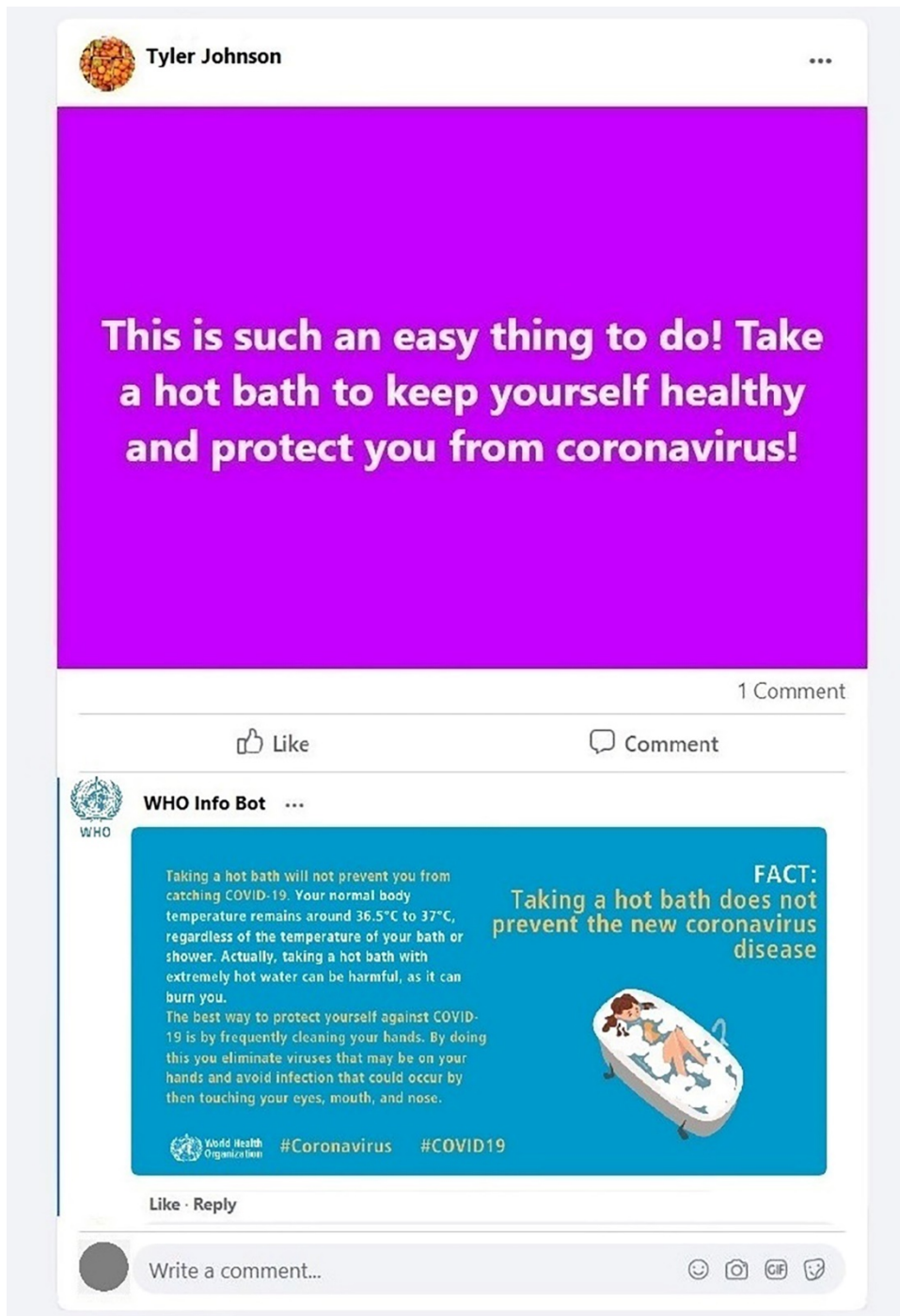
Addressing COVID-19 Misinformation on Social Media Preemptively and Responsively

Appendix 1

Experimental Stimuli



Appendix 1 Figure 1. Experimental stimuli from WHO responsive condition, showing full feed.



Appendix 1 Figure 2. Experimental stimuli from WHO responsive condition, showing only misinformation and correction.

Addressing COVID-19 Misinformation on Social Media Preemptively and Responsively

Appendix 2

Sample Characteristics across Waves

Appendix 2 Table 1. Characteristics of sample participants in wave 1 and wave 2 of the study of COVID-19 misinformation in social media

Characteristic	Wave 1		Wave 2	
	Mean	SD	Mean	SD
Age	36.89	11.30	37.35	11.37
Education	4.62	1.16	4.59	1.18
Income	2.95	1.23	2.98	1.24
Party affiliation	3.73	1.99	3.73	1.99
Political ideology	3.69	1.93	3.71	1.91
Percentages				
Male	62.5		61.6	
Female	37.5		38.4	
White	71.7		72.3	
African-American	17.9		16.7	
Asian-American	7.8		8.7	
Hispanic or Latino	20.1		16.8	

Appendix 2 Table 2. Number of persons per experimental condition

Category	Wave 1	Wave 2
Control	599	432
Misinformation	200	144
WHO preemptive	181	130
User preemptive	187	134
WHO responsive	193	138
User responsive	183	132

Addressing COVID-19 Misinformation on Social Media Preemptively and Responsively

Appendix 3

Measures

COVID-19 Prevention Misperceptions

Measured on a 5-point scale, from definitely false to definitely true.

Wave 1: Cronbach's alpha = 0.85, mean = 2.07, SD = 1.07, n = 1,542

Wave 2: Cronbach's alpha = 0.87, mean = 1.85, SD = 1.06, n = 1,110

1. Taking a hot bath will prevent infection from COVID-19.
2. If someone is exposed to COVID-19, a hot bath may prevent illness.
3. Taking a hot bath has no effect on COVID-19 (reversed).
4. A hot bath kills the COVID-19 virus before it can infect you.

Body Temperature Misperceptions

Measured on a 5-point scale, from definitely false to definitely true.

Wave 1: Pearson's correlation $r = 0.35$, $p < 0.001$, mean = 2.94, SD = 1.01, n = 1,542

Wave 2: Pearson's correlation $r = 0.37$, $p < 0.001$, mean = 2.81, SD = 1.08, n = 1,110

1. Human body temperature is largely unaffected by bath temperature (reversed).
2. You can raise your body temperature by taking a hot bath.

Addressing COVID-19 Misinformation on Social Media Preemptively and Responsively

Appendix 4

Attention Checks

In wave 1 of the study, participants answered a question before the manipulation that asked, “How much of a threat, if any, do each of the following pose to **you personally**?” for a matrix of options, including COVID-19 (the disease caused by SARS-CoV-2), the economic downturn, government overreach, climate change, and terrorism. Response options were *none at all, a little, a moderate amount, a lot, and a great deal*. During this battery, an item asked participants to select “a little” for that question if they were paying attention. This item was randomized with the other options. Participants who did not select “a little” for this response (n = 53) were excluded from all analyses and were not invited to participate in wave 2 of the study.

In wave 2, participants answered a question before the manipulation that asked, “Overall, how would you rate the performance of each of the following groups in responding to COVID-19?” for a matrix of options, including the World Health Organization, the Centers for Disease Control and Prevention, the US federal government, their state government, and their local government. Response options were *terrible, poor, average, good, and excellent*. During this battery, an item asked participants to select “good” for that question if they were paying attention. This item was randomized with the other options. Participants who did not select “good” for this response (n = 12) were excluded from all analyses for wave 2.

Addressing COVID-19 Misinformation on Social Media Preemptively and Responsively

Appendix 5

Additional Analysis

Appendix 5 Table 1. Correlations between science and prevention efficacy myths†

Characteristic	Wave 1
Control	0.06
Misinformation	0.15*
WHO preemptive	0.37***
User preemptive	0.06
WHO responsive	0.39***
User responsive	0.24**

*p<0.05, **p<0.01, ***p<0.001
 †Bolded values indicate correlation significantly stronger than pure control condition, p<0.05 using a Fisher r-to-z transformation, 2-tailed test.
 Italicized values indicate correlation is significantly stronger than misinformation condition, p<0.05, using Fisher r-to-z transformation, 2-tailed test

Appendix 5 Table 2. Comparing the means by experimental condition between wave 1 and wave 2*

Characteristic	Wave 1	Wave 2	Statistical test
Body temperature misperceptions			
Control	3.12	2.94	t = 4.15, p<0.001
Misinformation	3.08	2.85	t = 2.98, p<0.01
WHO preemptive	2.71	2.64	t = 0.81, p = 0.42
User preemptive	2.91	2.86	t = 0.60, p = 0.55
WHO responsive	2.62	2.58	t = -0.50, p = 0.52
User responsive	2.79	2.72	t = 0.86, p = 0.39
COVID-19 prevention misperceptions			
Control	2.02	1.94	t = 2.79, p = 0.01
Misinformation	1.89	1.74	t = 2.75, p = 0.01
WHO preemptive	1.86	1.80	t = 1.41, p = 0.16
User preemptive	1.95	1.85	t = 1.87, p = 0.06
WHO responsive	1.85	1.72	t = 2.69, p = 0.01
User responsive	2.01	1.83	t = 3.31, p<0.01

*Analysis limited to persons who passed both wave 1 and wave 2 attention checks to run a paired-samples t-test as the statistical test. Both COVID-19 misperceptions and body temperature misperceptions were measured on a 5-point scale from "definitely false" to "definitely true"; exact measures are found in Appendix 1. Bold values indicate a significant decline from wave 1 to wave 2 in misperceptions; italicized values represent a significantly different value from the control condition within that wave.