

Early Insights from Statistical and Mathematical Modeling of Key Epidemiologic Parameters of COVID-19

Matthew Biggerstaff, Benjamin J. Cowling, Zulma M. Cucunubá, Linh Dinh, Neil M. Ferguson, Huizhi Gao, Verity Hill, Natsuko Imai, Michael A. Johansson, Sarah Kada, Oliver Morgan, Ana Pastore y Piontti, Jonathan A. Polonsky, Pragati Venkata Prasad, Talia M. Quandelacy, Andrew Rambaut, Jordan W. Tappero, Katelijn A. Vandemaële, Alessandro Vespignani, K. Lane Warmbrod, Jessica Y. Wong, for the WHO COVID-19 Modelling Parameters Group¹

We report key epidemiologic parameter estimates for coronavirus disease identified in peer-reviewed publications, preprint articles, and online reports. Range estimates for incubation period were 1.8–6.9 days, serial interval 4.0–7.5 days, and doubling time 2.3–7.4 days. The effective reproductive number varied widely, with reductions attributable to interventions. Case burden and infection fatality ratios increased with patient age. Implementation of combined interventions could reduce cases and delay epidemic peak up to 1 month. These parameters for transmission, disease severity, and intervention effectiveness are critical for guiding policy decisions. Estimates will likely change as new information becomes available.

On December 31, 2019, authorities in China notified the World Health Organization (WHO) of a pneumonia cluster of unknown etiology in Wuhan (1); a novel coronavirus was subsequently isolated. As of March 7, 2020, coronavirus disease (COVID-19) and its causative agent, severe acute respiratory syndrome coronavirus 2 (SARS-CoV-2), had resulted in 101,927 cases and 3,486 deaths in 94

countries spanning 6 continents (2). The spectrum of illness ranged from asymptomatic infection to mild disease (e.g., fever, dry cough, and myalgias), pneumonia, and death. Roughly 20% of cases require hospitalization for shortness of breath; death is associated with increasing age and underlying conditions (e.g., hypertension, cardiovascular disease, and diabetes) (3).

We review major parameters of COVID-19 transmission dynamics from statistical and mathematical modeling studies using epidemiologic data reported in the first 60 days of the epidemic. We estimate the key components that contribute to future modeling on the effects of nonpharmaceutical interventions (NPIs) and to inform critical resource allocation decisions (4). Data estimates were current as of March 6, 2020, a few days before WHO characterized COVID-19 as a pandemic on March 11, 2020 (WHO Director General remarks, <https://www.youtube.com/watch?v=sbT6AANFOM4>), and were subject to change as more information becomes available.

Methods and Results

We reviewed the literature on key epidemiologic parameters (Table 1) relating to the COVID-19 epidemic. This report is not a formal systematic review because the epidemic is rapidly unfolding and useful data sources exist that have not yet been peer reviewed. We searched the peer-reviewed and gray literature, including preprints, research reports, and forum posts. We conducted searches for individual parameters during February 25–March 6, 2020, on PubMed, medRxiv, bioRxiv, arXiv, SSRN, Research

Author affiliations: Centers for Disease Control and Prevention, Atlanta, Georgia, USA (M. Biggerstaff, M.A. Johansson, S. Kada, P.V. Prasad, T.M. Quandelacy); University of Hong Kong, Hong Kong, China (B.J. Cowling, H. Gao, J.Y. Wong); Imperial College London, London, UK (Z.M. Cucunubá, N.M. Ferguson, N. Imai); World Health Organization, Geneva, Switzerland (L. Dinh, O. Morgan, J.A. Polonsky, J.W. Tappero, K.A. Vandemaële, K.L. Warmbrod); University of Edinburgh, Edinburgh, Scotland, UK (V. Hill, A. Rambaut); Northeastern University, Boston, Massachusetts, USA (A. Pastore y Piontti, A. Vespignani); ISI Foundation, Turin, Italy (A. Vespignani)

DOI: <https://doi.org/10.3201/eid2611.201074>

¹All authors contributed equally to this article.

Table 1. Key parameters and definitions for modeling of coronavirus disease

Parameter	Definition
Basic reproduction number (R_0)	Average number of persons infected by a single infected individual in a fully susceptible population
Time-varying or effective reproduction number (R , R_t , R_E)	Average number of persons infected by an infected individual in a population in the context of changing transmission patterns, such as those resulting from interventions and acquired immunity
Incubation period	Time between infection and symptom onset
Serial interval	Average time between symptom onset in a primary case and symptom onset in linked secondary cases
Generation interval	Average time between infection of a primary case and infection of linked secondary cases
Doubling time	Average time for the daily case count to double
Infectious period	Period during which an infected host, with or without symptoms, can transmit an infectious agent to susceptible persons, directly or indirectly
Case-fatality ratio	Proportion of cases that result in death (with case defined in numerous ways)
Infection-fatality ratio	Proportion of all infections (confirmed, symptomatic, asymptomatic) that result in death
Mean evolutionary rate	Average rate at which mutations accumulate per base pair in the genome over the course of a year

Square, Virological, Imperial College COVID reports, and Wellcome Open Research. Search terms centered on the various names of the disease and virus over the course of the epidemic (“nCoV,” “COVID,” “SARS-CoV-2,” “novel coronavirus”) and keywords relating to each of the epidemiologic parameters or characteristics considered (Appendix Table 1, <https://wwwnc.cdc.gov/EID/article/26/11/20-1074-App1.pdf>). We selected genetic epidemiology estimates, such as evolutionary rate and time from last common ancestor, from Virological (<http://virological.org>). We included articles in English and Chinese if they used mathematical or statistical methods for adjustment of different biases and if they were either peer reviewed or non-peer reviewed requiring established methods (i.e., clarity about the data used, known statistical methods, and reported uncertainty) (5–8).

For each parameter, characteristics such as study population, assumptions, and analytical methods were summarized when patterns were discernible across estimates. Estimates were summarized as ranges to reflect remaining uncertainty. No meta-analyses were performed.

R_0 and R

One of the key early indicators of transmissibility of a novel pathogen is R_0 , the basic reproduction number, which represents the average number of persons infected by an incident person in a fully susceptible population. Values for R_0 that are >1 are considered a critical threshold for epidemic growth. Mean R_0 estimates for Hubei Province, China, ranged widely, 2.1–5.1 (peer-reviewed) and 2.0–7.7 (M.S. Majumder and K.D. Mandl, unpub. data, https://papers.ssrn.com/sol3/papers.cfm?abstract_id=3524675; T. Liu et al., unpub. data, <https://www.biorxiv.org/content/10.1101/2020.01.25.919787v2>; K. Mizumoto et al., unpub. data, <https://www.medrxiv.org/content/10.1101/2020.02.12.20022434v2.full.pdf>; C. Zhou, unpub. data, <https://www.medrxiv.org/content/10.1101/2020.02.15.20022440v2.full.pdf>;

H. Sun et al., unpub. data, <https://www.medrxiv.org/content/10.1101/2020.02.17.20024257v1>; J. Li et al., unpub. data, <https://www.medrxiv.org/content/10.1101/2020.02.18.20024315v1.full.pdf>; S. Zhao et al, unpub. data, <https://www.medrxiv.org/content/10.1101/2020.02.26.20028449v1.full.pdf>; S. Zhao et al., unpub. data, <https://doi.org/10.2139/ssrn.3543150>; Z. Zhuang et al., unpub. data, <https://www.medrxiv.org/content/10.1101/2020.03.02.20030312v1.full.pdf>; S. Zhao et al., unpub. data, <https://www.medrxiv.org/content/10.1101/2020.02.21.20026559v1>), reflecting a variety of assumptions and methods used and data uncertainty (9–17). A subset of more recent estimates accounted for the broad restrictions implemented on January 23 in Hubei explicitly and were lower than earlier estimates (1.0–2.9) (H. Sun et al., unpub. data, <https://www.medrxiv.org/content/10.1101/2020.02.17.20024257v1>; L. Xu et al., unpub. data, <https://www.medrxiv.org/content/10.1101/2020.02.25.20024398v1>; L. Zhang et al., unpub. data, <https://www.medrxiv.org/content/10.1101/2020.02.16.20023804v1>). Mean R_0 estimates for provinces outside Hubei or for all of China were similar to those for Hubei before the implementation of travel restrictions (peer-reviewed range 0.4–3.9, preprint range: 0.6–6.4) (11,14,18–20; T. Liu et al., unpub. data, <https://www.biorxiv.org/content/10.1101/2020.01.25.919787v2>; H. Sun et al., unpub. data, <https://www.medrxiv.org/content/10.1101/2020.02.17.20024257v1>; L. Xu et al., unpub. data, <https://www.medrxiv.org/content/10.1101/2020.02.25.20024398v1>; L. Tindale et al., unpub. data, <https://www.medrxiv.org/content/10.1101/2020.03.03.20029983v1>; M. Shen et al., unpub. data, <https://www.biorxiv.org/content/10.1101/2020.01.23.916726v1>; L. Wang et al., unpub. data, <https://www.medrxiv.org/content/10.1101/2020.02.29.20029421v1.full.pdf>; Ku et al., unpub. data, <http://dx.doi.org/10.2139/ssrn.3543589>). R_0 estimates for China and cases outside China attributed to exportation were generally lower (peer-reviewed range 2.1–3.2; preprint

range 2.1– 5.7) (14,15,21; J.M. Read et al., unpub. data, <https://www.medrxiv.org/content/10.1101/2020.01.23.20018549v2.full.pdf>; C. Zhang and M.Wang, unpub. data, <https://www.biorxiv.org/content/10.1101/2020.01.25.919688v3>; Q. Zhou et al., unpub. data, <https://www.medrxiv.org/content/10.1101/2020.02.06.20020941v1.full.pdf>; Volz et al., unpub. data, <https://spiral.imperial.ac.uk/bitstream/10044/1/77169/1/2020-02-15-COVID19-Report-5.pdf>; Q. Zhao et al., unpub. data, <https://www.medrxiv.org/content/10.1101/2020.02.06.20020941v1>), as were estimates for the Diamond Princess cruise ship (mean $R_0 \approx 2.2$) (22; S. Zhao, unpub. data [$R_0 = 2.1$], <https://doi.org/10.2139/ssrn.3543150>; S. Zhao, unpub. data [$R_0 = 2.2$], <https://www.medrxiv.org/content/10.1101/2020.02.26.20028449v1.full.pdf>) and estimates for Singapore and South Korea (range 2.6–3.2; L. Tindale et al., unpub. data, <https://www.medrxiv.org/content/10.1101/2020.03.03.20029983v1>; Z. Zhuang, unpub. data [$R_0 = 2.6$], <https://www.medrxiv.org/content/10.1101/2020.03.02.20030312v1.full.pdf>) were generally lower. A meta-analysis of 7 early COVID-19 studies that accounted for uncertainty in assumptions estimated an R_0 of 2.9 (95% CI 2.1–4.5; S.W. Park et al., unpub. data, <https://www.medrxiv.org/content/10.1101/2020.01.30.20019877v4>) (Figure 1).

High variability in R_0 estimates can result from a mix of data (e.g., time period of cases analyzed, data available by onset date), methods (e.g., R_0 as a component of early exponential growth, fitting case data to compartmental models), and assumptions (e.g., serial intervals, case ascertainment). In particular, serial interval estimates directly affect R_0 : shorter serial intervals suggest that fewer transmission events are required for rapid growth. However, most R_0 estimates reviewed here used serial intervals values between 7.5 (COVID-19) and 8.4 (SARS); these differences likely had limited effects (7,9).

R_0 reflects average transmission, not individual-level transmission. Variability (dispersion) among individual-level contacts and transmission potential can lead to many persons infecting no others, whereas some infect many, as previously observed for severe acute respiratory syndrome (SARS) and Middle East respiratory syndrome (MERS) (23,24). This pattern has also been observed for COVID-19, with estimates of the dispersion parameter <1 (e.g., 0.5 in Singapore [A. Tariq et al. unpub. data, <https://www.medrxiv.org/content/10.1101/2020.02.21.20026435v4.full.pdf>], 0.54 in China [14], 0.58 in Shenzhen [19]). These findings imply that a minority of cases may cause the majority of infections; for example, in Shenzhen, 8.9% of cases were found to cause 80% of infections (19).

Rigorous contact tracing data are needed to improve these estimates and identify opportunities to tailor interventions accordingly (25).

Explicit estimates of the time-varying or effective reproduction number, R (often referred to as R_t or R_e), can identify changes in transmission over time as a result of interventions and acquired immunity. Mean estimates of R before January 23 generally fall within the ranges of 2.3–2.6 (peer-reviewed [26,27]) and 3.9–6.2 (preprints; T. Liu et al., unpub. data, <https://www.biorxiv.org/content/10.1101/2020.01.25.919787v2>; C. Wang et al., unpub. data, <https://www.medrxiv.org/content/10.1101/2020.03.03.20030593v1>). Shortly after the travel restrictions, R estimates ranging from 0.4–1.0 (peer-reviewed) to 0.2–3.4 (preprints) indicated a decrease in transmission in Wuhan and other parts of China (19,26; T. Liu et al., unpub. data, <https://www.biorxiv.org/>

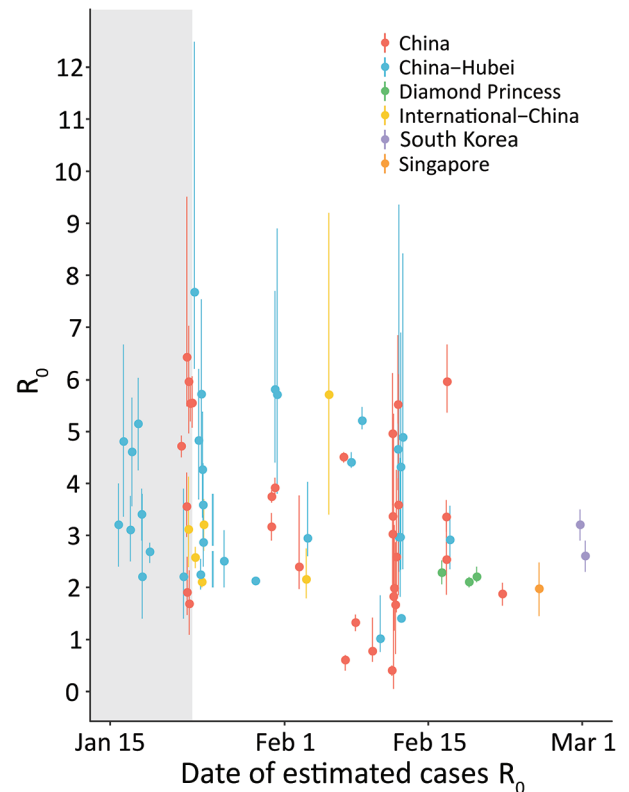


Figure 1. Basic reproduction number (R_0) estimates for coronavirus disease by date of last reported cases analyzed and location. Points are mean or median estimates and error bars indicate 90% (12,13,15) or 95% bounds (i.e., confidence or credible intervals). International–China estimates are those using international cases or exported cases from China to infer R_0 in China or Hubei Province. Estimates for China refer to R_0 estimates at the national or province level, except for those exclusive estimating R_0 for Hubei (China–Hubei). The gray shaded bar represents the time period before January 23, 2020, the date when broad restrictions were implemented in Hubei Province.

content/10.1101/2020.01.25.919787v2; K. Mizumoto et al., unpub. data, <https://www.medrxiv.org/content/10.1101/2020.02.12.20022434v1.full.pdf>; C. You et al., unpub. data, <https://www.medrxiv.org/content/10.1101/2020.02.08.20021253v2.full.pdf>; L.Zhang et al., unpub. data, <https://www.medrxiv.org/content/10.1101/2020.02.16.20023804v1>; C.C. Ku et al., unpub. data, https://papers.ssrn.com/sol3/papers.cfm?abstract_id=3543589; C. Wang et al., unpub. data, <https://www.medrxiv.org/content/10.1101/2020.03.03.20030593v1.full.pdf>; K.C. Chong et al., unpub. data, <https://www.medrxiv.org/content/10.1101/2020.03.02.20028704v1.full.pdf>; D. Chen and T. Zhou, unpub data, <https://arxiv.org/pdf/2003.00305v1.pdf>). In Singapore and South Korea, declines in R estimates also suggest decreases in transmission: from 1.1 to 0.7 as of February 14 in Singapore, and 1.5 (95% CI 1.4–1.6) in South Korea up to February 27 (28; A. Tariq et al., unpub. data, <https://www.medrxiv.org/content/10.1101/2020.02.21.20026435v6.full.pdf>). The R estimate for the Diamond Princess cruise ship suggests high transmission before and immediately after movement restrictions on the ship (median R 12.1 [95% CrI 8.2–17.2] on February 7, 2 days postquarantine), with rapid decrease thereafter (median R 0.35 [95% CrI 0.02–2.19] as of February 18) (29). Together, these estimates suggest that R_0 is high, yet intensive interventions can reduce transmissibility (R) substantially.

Incubation Period

The incubation period is the time between infection and symptom onset. Seven studies (10 estimates) were included in this review; the overall range was 1.8–9.0 days (Figure 2; Appendix Tables 2, 3) (9,30–33; L. Tindale et al., unpub. data, <https://www.medrxiv.org/content/10.1101/2020.03.03.20029983v1>; H. Lu et al., unpub. data, <https://www.medrxiv.org/content/10.1101/2020.02.19.20025031v1>). Among the articles in peer-reviewed literature, the mean incubation period was 1.8–6.9 days (9,30–33).

Serial Interval

The serial interval is the average time between symptom onset of a primary and transmission associated secondary case. Seven studies (10 estimates) estimated the mean serial interval in the range of 4.0–7.5 days (Figure 3; Appendix Tables 2, 3) (9,33–36; L. Tindale et al., unpub. data, <https://www.medrxiv.org/content/10.1101/2020.03.03.20029983v1>; S. Zhao et al., unpub. data, <https://www.medrxiv.org/content/10.1101/2020.02.21.20026559v1>). Ganyani et al. estimated a mean generation interval of 5.21 in Singapore and 3.95 in Tianjin, China (36).

Doubling Time

The doubling time is the average time for the daily case count to double. Using both genetic and case data over several locations and time periods,

Peer-reviewed literature

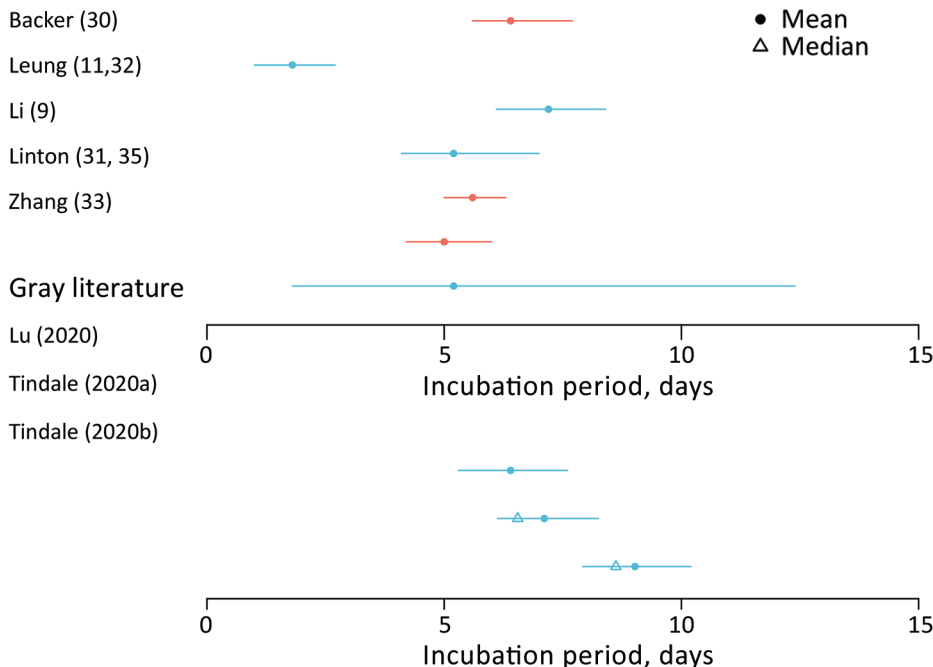


Figure 2. Estimated incubation period for coronavirus disease based on search in peer-reviewed and gray literature. Error bars indicate confidence (blue) or credible (red) intervals. Gray literature sources: Lu et al., unpub. data, <https://www.medrxiv.org/content/10.1101/2020.02.19.20025031v1>, Tindale et al., unpub. data, <https://www.medrxiv.org/content/10.1101/2020.03.03.20029983v1> (also see Appendix Tables 2, 3).

Peer-reviewed literature

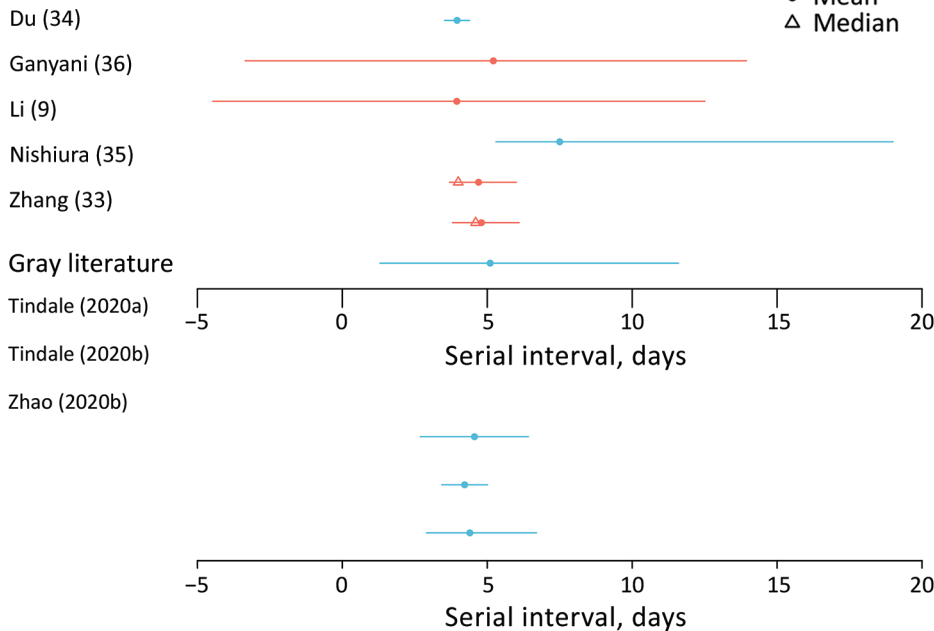


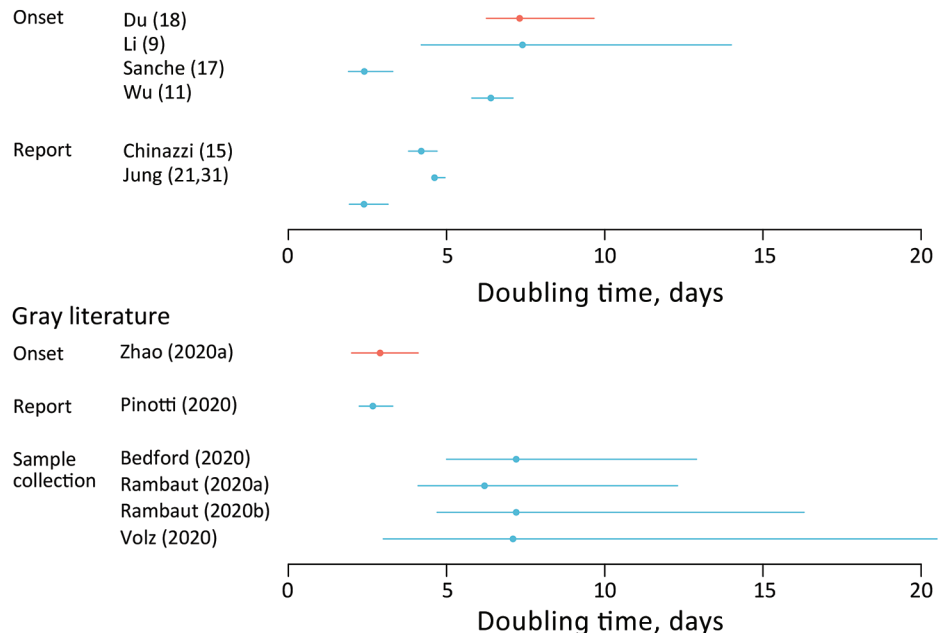
Figure 3. Estimated serial interval for coronavirus disease based on search in peer-reviewed and gray literature. Error bars indicate confidence (blue) or credible (red) intervals. Gray literature sources: Tindale et al., unpub. data, <https://www.medrxiv.org/content/10.1101/2020.03.03.20029983v1>, Zhao et al., unpub. data, <https://www.medrxiv.org/content/10.1101/2020.02.21.20026559v1> (also see Appendix Tables 2, 3).

11 studies estimated a mean doubling time of 2.3–7.4 days (Figure 4, Appendix Tables 2,3) (9,11,15,17,18,21; A. Rambaut, unpub. data, <http://virological.org/t/phylogenetic-analysis-176-genomes-6-mar-2020/356>; T. Bedford, unpub. data, <http://virological.org/t/phylogenetic-estimation-of-incidence-and-prevalence-of-novel-coronavirus-ncov-infections-through-time/391>;

F. Pinottiet al., unpub. data, <https://www.medrxiv.org/content/10.1101/2020.02.24.20027326v1>; S. Zhao et al., unpub. data, <https://www.medrxiv.org/content/10.1101/2020.02.06.20020941v1>; Volz et al., unpub. data, <https://spiral.imperial.ac.uk/bitstream/10044/1/77169/11/2020-02-15-COVID19-Report-5.pdf>).

Figure 4. Estimated doubling time for coronavirus disease based on search in peer-reviewed literature and gray literature. Error bars indicate confidence (blue) or credible (red) intervals. Gray literature sources: Onset: Zhao et al., unpub. data, <https://www.medrxiv.org/content/10.1101/2020.02.06.20020941v1>; report: Pinotti et al., unpub. data, <https://www.medrxiv.org/content/10.1101/2020.02.24.20027326v1>; sample collection: Bedford, unpub. data, <http://virological.org/t/phylogenetic-estimation-of-incidence-and-prevalence-of-novel-coronavirus-ncov-infections-through-time/391>, Rambaut, unpub. data, <http://virological.org/t/phylogenetic-analysis-176-genomes-6-mar-2020/356>, Rambaut, unpub. data, <http://virological.org/t/phylogenetic-analysis-176-genomes-6-mar-2020/356> (same), Volz et al., <https://spiral.imperial.ac.uk/bitstream/10044/1/77169/11/2020-02-15-COVID19-Report-5.pdf> (also see Appendix Tables 2, 3).

Peer-reviewed literature



Infectious Period

The infectious period is the period of time in which an infected host, with or without symptoms, can transmit to susceptible persons. One estimate (C. You et al., unpub. data, <https://www.medrxiv.org/content/10.1101/2020.02.08.20021253v2>), based on data from 67 cases, estimated a mean infectious period of 10.91 days (SD 3.95 days). Little is known about how characteristics of an infected person, such as age, severity, and clinical progression, affect overall infectious period estimates.

Severity

We did not identify mathematical or statistical models that examine clinical disease progression. We include empiric findings detailed in the WHO China Mission report, which has been used to inform other models (37).

Most of the >75,000 cases of COVID-19 reported through March 6 were from Hubei Province. Among 55,924 confirmed cases in China as of February 20, the median patient age was 51 years (range 2 days–100 years); most (77.8%) patients were 30–69 years of age. The clinical distribution was 80.4% mild/moderate, 13.8% severe, and 6.1% critically ill (Appendix Table 4). Only 2.4% of reported cases were among persons <19 years of age (37). Severe disease was reported among those with increased age (>60 years) and underlying conditions such as hypertension, diabetes, cardiovascular disease, chronic respiratory disease, and cancer (38). Fatality estimates have come primarily from elderly Wuhan residents (39), suggesting substantially higher lethality compared with cases outside Hubei Province (Figure 5).

The age distribution of cases and deaths detected outside China has been wider than that within China (39). This difference may result from higher-sensitivity surveillance for travelers compared with cases inside China, particularly in countries on high alert, such as Thailand and Japan, which implemented temperature screening at airports. In general, early severe cases were more likely to be detected than mild cases, resulting in higher severity estimates early on. Cases among travelers might also generally be in younger persons because of age-specific differences in travel.

A broader spectrum of clinical severity has been observed in travel-associated and locally acquired cases reported outside China, likely reflecting more robust surveillance for SARS-CoV-2. Severity ranges from asymptomatic infection to symptoms such as fever and fatigue, as well as mild to severe respiratory symptoms including cough and pneumonia. Cases

have been reported in persons with previously good health and no known underlying conditions (40). Differences in severity have also been observed within transmission chains (41–44).

The case-fatality ratio (CFR) is the proportion of cases that result in death. There are several variations of CFR, including symptomatic (sCFR), laboratory-confirmed (cCFR), hospitalization (HFR), critical care (ccCFR), and infection (IFR). Eleven studies, estimating either CFR or a variation of CFR, were included in this review (Figure 5). Most estimates were based on data from China; however, a few are from outside China or from the Diamond Princess cruise ship (39,45). Estimates of CFR generally did not include specific case definitions and ranged from 0.9% to 18.9%. Moreover, CFR is highly variable across situations (e.g., general population, hospitalized patients, or critically ill patients). Critically ill patients' estimates range between 8.0% and 28.7% (X. Deng et al., unpub. data, <https://www.medrxiv.org/content/10.1101/2020.03.04.20031005v1>). Notably, IFR seems to be more consistent across studies, with central estimates around 0.6% in 2 peer-reviewed studies from mainland China (39,45), yet higher at 3.3% in Hubei Province and 3% in northern Italy (A. Hauser et al., unpub. data, <https://www.medrxiv.org/content/medrxiv/early/2020/03/30/2020.03.04.20031104.full.pdf>), and lower at 0.2%–1.6% in Asia and Europe (Figure 5; Appendix Table 5).

There was evidence of a strong age gradient in both CFR and IFR; elderly patients were at higher risk (43). IFR shows a strong age gradient; IFR was 0.007% in children, 1.9%–4.6% in patients 60–69 years of age, and 7.8%–18% in patients >80 years of age (39). Hospitalization rates were also age dependent: <0.04% in children, 11.8% in patients 60–69 years of age, and 18.4% among patients ≥80 years of age (39).

Viral Evolution and Genomic Epidemiology

Virus genome sequences from a representative sample of cases can be used for calculating the evolutionary rate, date of introduction to the human population, and size of outbreak, as well as estimating the reproduction number and doubling time (46–49). The evolutionary rate is the rate at which mutations accumulate per base pair in the genome over the course of a year. Estimates have ranged from 0.8×10^{-3} to 1.2×10^{-3} (Table 2; J. Sciré et al., unpub. data, <http://virological.org/t/update-2-evolutionary-epidemiological-analysis-of-128-genomes/423>; S. Duchene et al., unpub. data, <http://virological.org/t/temporal-signal-and-the-evolutionary-rate-of-2019-n-cov-using-47-genomes-collected-by-feb-01-2020/379>;

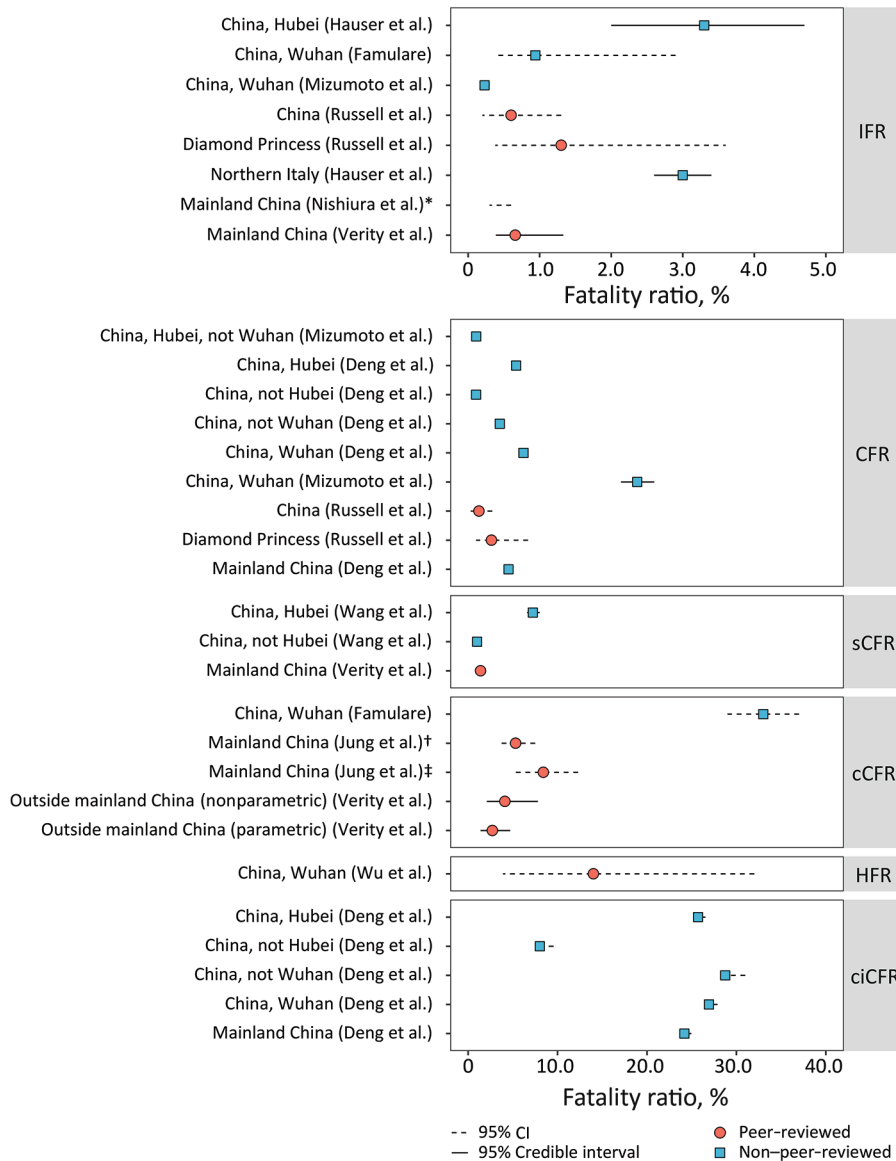


Figure 5. Summary of IFR and CFR estimates for coronavirus disease. Circles or squares indicate mean or median estimates and error bars indicate confidence (dotted line) or credible (full line) intervals. Red indicates peer-reviewed and blue non-peer-reviewed papers (for links to non-peer reviewed papers, see Appendix Table 5). *Range based on ≈10% ascertainment. †Epidemic growth alone. ‡Epidemic growth along with other parameters. CFR, case fatality ratio; cCFR, laboratory-confirmed CFR; ccCFR, critical care and severe CFR; sCFR, symptomatic CFR; HFR, hospitalization fatality ratio; IFR, infection fatality ratio.

V. Hill and A. Rambaut, unpub. data, <https://virological.org/t/phylogenetic-analysis-of-sars-cov-2-update-2020-03-06/420>; A. Rambaut, unpub. data, <http://virological.org/t/phylogenetic-analysis-176-genomes-6-mar-2020/356>; T. Bedford, unpub. data, <http://virological.org/t/phylogenetic-estimation-of-incidence-and-prevalence-of-novel-coronavirus-ncov-infections-through-time/391>). These evolutionary rates are similar to those of MERS-CoV and SARS-CoV-1. The data suggest that the COVID-19 outbreak was started by a single spillover event occurring in late 2019 (Table 2) and supported by case-reported data in December 2019 (50; J. Sciré et al., unpub. data, <http://virological.org/t/update-2-evolutionary-epidemiological>

analysis-of-128-genomes/423; S. Duchene et al., unpub. data, <http://virological.org/t/temporal-signal-and-the-evolutionary-rate-of-2019-n-cov-using-47-genomes-collected-by-feb-01-2020/379>; V. Hill and A. Rambaut, unpub. data, <http://virological.org/t/phylogenetic-analysis-of-sars-cov-2-update-2020-03-06/420>; A. Rambaut, unpub. data, <http://virological.org/t/phylogenetic-analysis-176-genomes-6-mar-2020/356>; T. Bedford, unpub. data, <http://virological.org/t/phylogenetic-estimation-of-incidence-and-prevalence-of-novel-coronavirus-ncov-infections-through-time/391>; Volz et al., unpub. data, <https://spiral.imperial.ac.uk/bitstream/10044/1/77169/11/2020-02-15-COVID19-Report-5.pdf>).

Table 2. Summary of estimates of mean evolutionary rate and most recent common ancestor of COVID-19*

Mean evolutionary rate (95% CI)	MRCAs (95% CI)	No. genomes analyzed	Clock model†	Growth model	Source
NA	2019 Nov 29 (Nov 8–Dec 16)	23	Strict	Constant	Rambaut, unpub. data, http://virological.org/t/phylogenetic-analysis-of-23-ncov-2019-genomes-2020-01-23/335
1.23 × 10 ⁻³ (0.56 × 10 ⁻³ to 1.98 × 10 ⁻³)	2019 Nov 21 (Oct 23–Dec 13)	51	Strict	Exponential	Duchene et al., unpub. data, http://virological.org/t/temporal-signal-and-the-evolutionary-rate-of-2019-n-cov-using-47-genomes-collected-by-feb-01-2020/379
1.29 × 10 ⁻³ (0.535 × 10 ⁻⁴ to 2.15 × 10 ⁻³)	2019 Nov 14 (Sep 28–Dec 13)	51	UNCL	Exponential	Duchene et al., unpub. data, http://virological.org/t/temporal-signal-and-the-evolutionary-rate-of-2019-n-cov-using-47-genomes-collected-by-feb-01-2020/379
0.9 × 10 ⁻³ (0.5 × 10 ⁻³ to 1.4 × 10 ⁻³)	2019 Dec 3 (Oct 30–Dec 17)	51	Strict	Exponential	Bedford, unpub. data, http://virological.org/t/phylogenetic-estimation-of-incidence-and-prevalence-of-novel-coronavirus-ncov-infections-through-time/391
0.92 × 10 ⁻³ (0.33 × 10 ⁻³ to 1.46 × 10 ⁻³)	2019 Nov 29 (Oct 28–Dec 20)	75	Strict	Exponential	Rambaut, unpub. data, http://virological.org/t/phylogenetic-analysis-176-genomes-6-mar-2020/356 . Accessed March 4, 2020
1.04 × 10 ⁻³ (0.71 × 10 ⁻³ to 1.4 × 10 ⁻³)	2019 Dec 3 (Nov 16–Dec 17)	116	Strict	Exponential	Hill and Rambaut, unpub. data, http://virological.org/t/phylogenetic-analysis-of-sars-cov-2-update-2020-03-06/420
7.41 × 10 ⁻⁴ (4.91 × 10 ⁻⁴ to 1.02 × 10 ⁻³)	2019 Nov 27 (Nov 7–Dec 11)	128	Strict	Birth–death model	Sciré et al., unpub. data, http://virological.org/t/update-2-evolutionary-epidemiological-analysis-of-128-genomes/423

*MRCAs, most recent common ancestor; NA, not applicable; UNCL, uncorrelated.

†The clock model is a technique that uses the mutation rate to estimate the time of emergence (48).

Effectiveness of Nonpharmaceutical Interventions

Nonpharmaceutical interventions (NPIs) include interventions at individual and community levels. At the individual level, NPIs examined in modeling studies included voluntary home isolation or quarantine (Appendix Table 6). At the community level, NPIs included school and workplace closures and canceling or postponing large public gatherings (see Appendix Table 7 for definitions). Modeling can be used to estimate the effectiveness of components of these interventions (e.g., case detection), the interventions themselves (e.g., case isolation) or combinations of interventions (e.g., case and contact isolation). In total, 29 articles were identified; of these, 17 met the inclusion criteria for this review (Table 3) (11,15,18,51–56; F. Pinotti et al., unpub. data, <https://www.medrxiv.org/content/10.1101/2020.02.24.20027326v1>; R. Niehus et al., unpub. data, K. Gostic et al., unpub. data, <https://www.medrxiv.org/content/10.1101/2020.01.28.20019224v2>; A. Adiga et al., unpub. data, <https://www.medrxiv.org/content/10.1101/2020.02.20.20025882v2>; S. Lai et al., unpub. data, <https://www.medrxiv.org/content/10.1101/2020.03.03.20029843v3.full.pdf>; Y. Zhang et al., unpub. data, <https://www.medrxiv.org/content/10.1101/2020.03.04.20031187v1>; S. Clifford et al., unpub. data, <https://cmmid.github.io/topics/covid19/screening-outbreak-delay.html>;

S. Bhatia et al., unpub. data, <https://www.imperial.ac.uk/media/imperial-college/medicine/sph/ide/gida-fellowships/Imperial-College-COVID19-international-surveillance-21-02-2020.pdf>).

Case Screening and Detection

Recent articles have addressed the efficacy of screening and detection by surveillance systems in different countries (51; F. Pinotti et al., unpub. data, <https://www.medrxiv.org/content/10.1101/2020.02.24.20027326v1>; R. Niehus et al., unpub. data, <https://www.medrxiv.org/content/10.1101/2020.02.13.20022707v2>; S. Bhatia et al., unpub. data, <https://www.imperial.ac.uk/media/imperial-college/medicine/sph/ide/gida-fellowships/Imperial-College-COVID19-international-surveillance-21-02-2020.pdf>). Two studies used data from Singapore (known for having a reliable health reporting system) as benchmarks to estimate the sensitivity of surveillance systems in other countries (R. Niehus et al., unpub. data, <https://www.medrxiv.org/content/10.1101/2020.02.13.20022707v2>; S. Bhatia et al., unpub. data, <https://www.imperial.ac.uk/media/imperial-college/medicine/sph/ide/gida-fellowships/Imperial-College-COVID19-international-surveillance-21-02-2020.pdf>). Both articles agreed that only a fraction of cases (22%–64%) are captured by surveillance systems, varying by

country. A more recent study found similar results (36% detected cases), and lower ascertainment when repatriations were considered (F. Pinotti et al., unpub. data, <https://www.medrxiv.org/content/10.1101/2020.02.24.20027326v1>).

Case Isolation and Quarantine of Contacts

One study considered different scenarios in which the reproduction number and transmission before symptom onset were varied to study the controllability

of the outbreak (51). The authors found that as R_0 increased, the percentage of contacts to be traced increased. The delay between symptom onset and isolation also affected the controllability of the outbreak. For values of $R_0 > 2.5$, contact tracing and isolation were successful at stopping transmission when $< 1\%$ of transmission occurred before symptom onset. For these 2 parameters, case isolation alone would be unlikely to control transmission within 3 months.

Table 3. Summary of studies of NPIs for COVID-19

NPI	Summary/results	Source/reference
Case detection	(27%–37%) cases detected†	Bhatia et al., unpub. data, https://www.imperial.ac.uk/media/imperial-college/medicine/sph/ide/gida-fellowships/Imperial-College-COVID19-international-surveillance-21-02-2020.pdf
Case detection	38% (22%–64%) cases detected	Niehus et al., unpub. data, https://www.medrxiv.org/content/10.1101/2020.02.13.20022707v2
Case screening and detection	(36%–65%) cases detected†	Pinotti et al., unpub. data, https://www.medrxiv.org/content/10.1101/2020.02.24.20027326v1
Case isolation and contact tracing	Delay of symptom onset to isolation has a high impact on the results, affecting the controllability of the outbreak. Results vary by scenario.	(51)
Travel screening	34% (20%–50%) of travelers identified through both departure and arrival screening using symptoms or risk screening	Gostic et al., unpub. data, https://www.medrxiv.org/content/10.1101/2020.01.28.20019224v2
Travel screening	46.5% (35.9%–57.7%) travelers not detected through thermal screening	(52)
Travel screening	Syndromic screening and traveler sensitization in combination could delay outbreaks in yet unaffected countries up to 83 d (75% 36 d, 97.5% 8 d).	Clifford et al., unpub. data, https://cmmid.github.io/topics/covid19/screening-outbreak-delay.html
Travel reduction (transport suspension)	Delay of 2.91 d (95% CI 2.54–3.29) for the arrival of the disease to other cities in China	(53)
Travel reduction (travel quarantine)	130 cities in China had $\geq 50\%$ chance of having a COVID-19 case imported from Wuhan in the 3 weeks preceding the quarantine.	(18)
Travel restrictions	Travel restriction imposed on Wuhan delay the epidemic for 3 d.	(15)
Travel reduction (airline suspensions)	Travel restriction imposed on China will delay the disease in other countries, the biggest delay being in Africa (11 d) and South America (9 d).	Adiga et al., unpub. data, https://www.medrxiv.org/content/10.1101/2020.02.20.20025882v2
Travel reduction	Travel restriction will delay the epidemic for 2 d.	(54)
Cancellation of mass gathering	37% fewer cases when the interventions started before the first case	(53)
Combination of NPI	66%, 86%, and 95% fewer cases depending on timing of the interventions	Lai et al., unpub. data, https://www.medrxiv.org/content/10.1101/2020.03.03.20029843v3.full.pdf
Combination of NPI	50% fewer cases if transmissibility reduced by 25% in all cities in China; delay of epidemic peak for 1 month	(11)
Combination of NPI	Drastic control measures implemented in China have substantially mitigated spread of COVID-19.	(36)
Combination of NPI	Earlier intervention of social distancing could limit the epidemic in mainland China. Number of infections could be reduced up to 98.9%, and number of deaths could be reduced by up to 99.3% as of Feb 23, 2020.	Zhang et al., unpub. data, https://www.medrxiv.org/content/10.1101/2020.03.04.20031187v1
Community behavior modification	At least 42% of persons interviewed have modified daily behavior.	(55)

*COVID-19, coronavirus disease; NPI, nonpharmaceutical interventions.

†Point estimates

Traveler Screening

Two studies considered models in which passengers were screened before leaving an area with local transmission and upon arrival at their destination (52; K. Gostic et al., unpub. data, <https://www.medrxiv.org/content/10.1101/2020.01.28.20019224v2>), demonstrating that a relatively low number of cases would likely be detected (34%–54%). Different factors affect the underdetection of cases, including the country's ability to detect cases. Some of those factors include asymptomatic infections, infections with mild clinical symptoms, limited care-seeking behavior, case definition, and underrecognition of cases by clinicians. A third study suggests that exit and entry screening combined with traveler sensitization can delay a local outbreak by ≥ 83 days, with ≤ 1 infected traveler per week (S. Clifford et al., unpub. data, <https://cmmid.github.io/topics/covid19/screening-outbreak-delay.html>).

Travel Restrictions

On January 23, 2020, travel bans were implemented from Wuhan city. Within China, this resulted in a delay in disease arrival of 3 days, on average (53). Cities that implemented the ban before their first case was detected observed fewer cases than cities that implemented the ban after their first case (53). Another study found that 130 cities in China had $>50\%$ chance of having a COVID-19 case imported from Wuhan in the 3 weeks preceding the implementation of travel restrictions, suggesting that there were cases outside of Wuhan before the travel ban (18). Analysis of the effect of the Wuhan travel ban, including the implementation of long-range travel restrictions on January 23, showed no noticeable difference for the epidemic trajectory of Wuhan, while delaying the occurrence of cases for other locations in China by 3 days (15). Another study found that travel restrictions would delay the epidemic spread throughout China by 2 days (54).

Internationally, several countries implemented travel bans. One modeling study estimated how travel restrictions from China affected the time of arrival of the infected persons (A. Adiga et al., unpub. data, <https://www.medrxiv.org/content/10.1101/2020.02.20.20025882v2>). It found that countries in Africa and South America would likely observe the biggest delays: 11 days for Africa and 9 days for South America. Another study found that travel reductions of up to 90% had only a modest effect unless paired with public health interventions and behavioral changes to achieve a considerable reduction in disease transmission (15).

Cancellation of Events and Public Gatherings

One study analyzed a range of interventions, such as suspending public transport, closing entertainment venues, and banning public gatherings (53). Results varied by city and number of control measures adopted; the study found that cities that implemented a level 1 response (≥ 2 control measures) before the first case was confirmed had 37% fewer cases in the week after the first case identified compared with cities that started control thereafter. Locations that closed entertainment venues and banned public gatherings early in the outbreak reported fewer cases during the first week.

Finally, 4 studies estimated the effects of transmission reduction in China when NPI mitigation strategies were combined (11; S. Lai et al., unpub. data, <https://www.medrxiv.org/content/10.1101/2020.03.03.20029843v3.full.pdf>). The combined interventions notably reduced the number of cases observed and delayed the epidemic peak by >1 month. It was found that earlier intervention of social distancing could greatly limit the epidemic in mainland China. The number of infections could have been reduced up to 98.9%, and the number of deaths reduced by 99.3%, as of February 23, 2020 (Y. Zhang et al., unpub. data, <https://www.medrxiv.org/content/10.1101/2020.03.04.20031187v1>). A different group found that following the implementation of control measures, growth rates became negative in most locations, and that drastic control measures implemented in China substantially mitigated COVID-19 spread (56).

Community Behavior Modification

One research group performed an online survey after the first case of COVID-19 was reported in Hong Kong. Those results showed that 39%–88% of the persons surveyed had adopted social distancing measures (55).

Discussion

Modeling can provide estimates of disease transmission parameters for planning and response during epidemics. Investigators around the world have been trying to understand the transmission dynamics and severity of disease, as well as the effects that different interventions have had on the course of the epidemic through advanced analytics and modeling. However, transmission parameter estimates are limited by the availability and comprehensiveness of data early in the epidemic. Some parameters can be estimated from genetic sequencing data, but these estimates are heavily influenced by biases in sampling and inaccuracies in sequencing. Although efforts to collect and

share clinical, epidemiologic, and sequence data have been remarkably timely, there remain outstanding gaps in knowledge.

Several parameters presented in this review are context specific, such as R_0 values or CFR measurements. Although the characteristics of SAR-CoV-2 are unlikely to change, responses to transmission will vary. Several factors affect the trajectory of an epidemic in different locations, such as population density, health system infrastructure, transportation robustness, cultural practices, and poverty levels (57). Available data from China may not be reflective of secular trends elsewhere. As other countries develop more cases, more robust data will be available for modeling and extrapolation for countries not yet affected.

Challenges in assessing severity of clinical outcomes during a new emerging epidemic have been discussed in depth elsewhere and are not covered here (7,8). However, 4 challenges remain. First, early in an outbreak, data are heavily biased toward severe cases. Estimates of the CFR in those patients with known outcomes may be biased upward until the extent of clinically milder disease is determined. Second, there is a period between onset of symptoms and final clinical outcome (death vs. survival) (58,59). During a growing epidemic, the final clinical outcome of most reported cases is typically unknown. This is particularly true with COVID-19, with which severely ill patients may be hospitalized for many days. The crude CFR will underestimate the fatality risk among early epidemic cases (7,8,59). Third, while the epidemic is growing there will be a bias toward having observed cases with recent symptom onset and outcomes. Therefore, estimates should be adjusted for the growth rate of the epidemic (8). Fourth, overrepresentation of men, elderly persons with underlying conditions, and persons with respiratory risk factors (such as smoking) may result from observation bias or exposure differences and affect CFR estimates.

Country preparedness and clinical care capacity will affect patient outcomes. Delayed diagnosis and treatment, limited knowledge of the natural history of infection, and rapid escalation of cases can affect clinical outcomes. Thus, fatality in patients cared for very early in a country's epidemic may be greater than in later patients (7). More information on the proportion of persons requiring healthcare, level of care (outpatient, inpatient, and intensive care), and duration of care required are essential for predicting healthcare needs as the epidemic progresses.

Presymptomatic or asymptomatic transmission, if substantial, might have critical implications for

control efforts. Empiric evidence of such potential transmission includes a serial interval and generation time that were estimated shorter than the incubation period (L. Tindale et al., unpub.data, <https://www.medrxiv.org/content/10.1101/2020.03.03.20029983v1>; H. Lu et al., unpub. data, <https://www.medrxiv.org/content/10.1101/2020.02.19.20025031v1>), similarly high viral loads in asymptomatic and symptomatic cases (36,60), and documentation of patients infected by presymptomatic or asymptomatic carriers in cluster investigations (61–64). If asymptomatic infectious carriers are not characterized appropriately in models, epidemic infection rates would be underestimated but the severity and the effectiveness of interventions would be overestimated, potentially leading to implementation of ineffective interventions. Serologic studies will be critical for understanding the role of asymptomatic transmission.

Early evidence suggests that travel restrictions result in only modest decreases in the importation of cases. However, combined with other social distancing measures and behavior changes, travel restrictions may be a useful addition. Modeling can be extremely valuable in providing counterfactuals aimed at disentangling the effects of different NPIs. Documentation of timing, type of NPI, and compliance rate will be needed to estimate the effectiveness of the different interventions.

This study is subject to additional limitations. To use the latest information, we included a number of preprint reports that have not been formally peer reviewed. In addition, there is a heavy reliance on data from China, because of the period considered. Given the recent geographic spread of COVID-19, there may be a range of future estimates that will differ from those reported here. Finally, we have not performed a formal assessment of possible biases of the estimates examined in this article, and therefore cannot exclude that some estimates reported are affected by unmeasured sources of biases.

As the COVID-19 epidemic progresses, ongoing refinement and validation of key epidemiologic parameters will help inform the global public health response. Defining optimal surveillance methods, laboratory testing, contact tracing parameters, quarantine measures, hospital acute care capacities, and many other operational factors depends on estimates of the epidemiologic parameters summarized in this article. One of the largest knowledge gaps is that of asymptomatic or presymptomatic infectious potential and the occurrence of subclinical infections. In the absence of efficacious vaccines and therapeutics, developing an evidence base for NPIs will remain a critical tool for

effective local, national, and global outbreak control. Better data will enable mathematical and statistical modeling to more precisely predict how different NPIs can be combined to produce efficient epidemic control.

Our summary provides estimates through the first 10 weeks of the COVID-19 epidemic that are needed for operational planning, scenario-building for contingency planning, and forecasting to inform today's preparedness and response efforts. Data from outbreaks in newly affected countries and new data stemming from seroprevalence and transmission studies will provide insights currently unavailable. Documenting and evaluating NPIs will help public health and government decision makers to implement the most effective epidemic control measures.

Acknowledgments

We appreciate Nicole Samay for assistance with the figures and Xin Tang for the review of Chinese language papers.

N.I., N.F., and Z.C. acknowledge joint center funding from the UK Medical Research Council and Department for International Development, grant no. MR/R015600/1.

The WHO COVID-19 Modelling Parameters Group has convened since January 2020 to discuss and summarize current knowledge on parameters of transmission, severity, and effectiveness of interventions important to support the projection of this epidemic and to inform policy decisions. The group comprises infectious disease modelers and epidemiologists involved in the response to COVID-19.

About the Author

Dr. Biggerstaff is an epidemiologist with the Centers for Disease Control and Prevention, Atlanta, GA, USA, working on influenza forecasting and modeling activities. His research interests include working to understand and evaluate how forecasting and mathematical modeling can complement influenza surveillance and inform seasonal and pandemic influenza public health actions.

References

- World Health Organization. Novel coronavirus (2019-nCoV) situation report 1. 2020 Jan [cited 2020 Mar 1]. https://www.who.int/docs/default-source/coronaviruse/situation-reports/20200121-sitrep-1-2019-ncov.pdf?sfvrsn=20a99c10_4
- World Health Organization. Coronavirus disease 2019 (COVID-19) situation report 47. 2020 Mar [cited 2020 Mar 1]. https://www.who.int/docs/default-source/coronaviruse/situation-reports/20200307-sitrep-47-covid-19.pdf?sfvrsn=27c364a4_4
- World Health Organization Health Emergencies Programme. Q&A on coronaviruses (COVID-19). 2020 [cited 2020 Feb 26]. <https://www.who.int/news-room/q-a-detail/q-a-coronaviruses>
- Wu JT, Cowling BJ. The use of mathematical models to inform influenza pandemic preparedness and response. *Exp Biol Med* (Maywood). 2011;236:955–61. <https://doi.org/10.1258/ebm.2010.010271>
- Garske T, Cori A, Ariyaratna A, Blake IM, Dorigatti I, Eckmanns T, et al. Heterogeneities in the case fatality ratio in the West African Ebola outbreak 2013–2016. *Philos Trans R Soc Lond B Biol Sci*. 2017;372:20160308. <http://doi.org/10.1098/rstb.2016.0308>
- Kucharski AJ, Edmunds WJ. Case fatality rate for Ebola virus disease in west Africa. *Lancet*. 2014;384:1260. [https://doi.org/10.1016/S0140-6736\(14\)61706-2](https://doi.org/10.1016/S0140-6736(14)61706-2)
- Lipsitch M, Donnelly CA, Fraser C, Blake IM, Cori A, Dorigatti I, et al. Potential biases in estimating absolute and relative case-fatality risks during outbreaks. *PLoS Negl Trop Dis*. 2015;9:e0003846. <https://doi.org/10.1371/journal.pntd.0003846>
- Ghani AC, Donnelly CA, Cox DR, Griffin JT, Fraser C, Lam TH, et al. Methods for estimating the case fatality ratio for a novel, emerging infectious disease. *Am J Epidemiol*. 2005;162:479–86. <https://doi.org/10.1093/aje/kwi230>
- Li Q, Guan X, Wu P, Wang X, Zhou L, Tong Y, et al. Early transmission dynamics in Wuhan, China, of novel coronavirus-infected pneumonia. *N Eng J Med*. 2020; 382:1199–1207. <https://doi.org/10.1056/NEJMoa2001316>
- Zhou T, Liu Q, Yang Z, Liao J, Yang K, Bai W, et al. Preliminary prediction of the basic reproduction number of the Wuhan novel coronavirus 2019-nCoV. *J Evid Based Med*. 2020;13:3–7. <https://doi.org/10.1111/jebm.12376>
- Wu JT, Leung K, Leung GM. Nowcasting and forecasting the potential domestic and international spread of the 2019-nCoV outbreak originating in Wuhan, China: a modelling study. *Lancet*. 2020;395:689–97. [http://dx.doi.org/10.1016/S0140-6736\(20\)30260-9](http://dx.doi.org/10.1016/S0140-6736(20)30260-9)
- Abbott S, Hellewell J, Munday J, Funk S; CMMID nCoV Working Group. The transmissibility of novel coronavirus in the early stages of the 2019–20 outbreak in Wuhan: exploring initial point-source exposure sizes and durations using scenario analysis. *Wellcome Open Res*. 2020;5:17. <http://dx.doi.org/10.12688/wellcomeopenres.15718.1>
- Anastassopoulou C, Russo L, Tsakris A, Siettos C. Data-based analysis, modelling and forecasting of the COVID-19 outbreak. *PLoS ONE*. 2020;15:e0230405. <https://doi.org/10.1371/journal.pone.0230405>
- Riou J, Althaus CL. Pattern of early human-to-human transmission of Wuhan 2019 novel coronavirus (2019-nCoV), December 2019 to January 2020. *Eurosurveillance*. 2020 Jan 30 [cited 2020 Mar 6]. <https://www.eurosurveillance.org/content/10.2807/1560-7917.ES.2020.25.4.2000058>
- Chinazzi M, Davis JT, Ajelli M, Gioannini C, Litvinova M, Merler S, et al. The effect of travel restrictions on the spread of the 2019 novel coronavirus (COVID-19) outbreak. *Science*. 2020;368:395–400. <https://doi.org/10.1126/science.aba9757>
- Zhao S, Lin Q, Ran J, Musa SS, Yang G, Wang W, et al. Preliminary estimation of the basic reproduction number of novel coronavirus (2019-nCoV) in China, from 2019 to 2020: a data-driven analysis in the early phase of the outbreak. *Int J Infect Dis*. 2020;92:214–7. <https://doi.org/10.1016/j.ijid.2020.01.050>
- Sanche S, Lin YT, Xu C, Romero-Severson E, Hengartner N, Ke R. High contagiousness and rapid spread of severe acute respiratory syndrome coronavirus 2. *Emerg Infect Dis*. 2020;26:1470–7. <https://doi.org/10.3201/eid2607.200282>
- Du Z, Wang L, Cauchemez S, Xu X, Wang X, Cowling BJ, et al. Risk for transportation of 2019 novel coronavirus disease from Wuhan to other cities in China. *Emerg*

- Infect Dis. 2020;26:1049–52. <https://doi.org/10.3201/eid2605.200146>
19. Bi Q, Wu Y, Mei S, Ye C, Zou X, Zhang Z, et al. Epidemiology and transmission of COVID-19 in 391 cases and 1286 of their close contacts in Shenzhen, China: a retrospective cohort study. *Lancet Infect Dis.* 2020 Apr 27 [Epub ahead of print]. [https://doi.org/10.1016/S1473-3099\(20\)30287-5](https://doi.org/10.1016/S1473-3099(20)30287-5)
 20. Song QQ, Zhao H, Fang LQ, Liu W, Zheng C, Zhang Y. Study on assessing early epidemiological parameters of COVID-19 epidemic in China [in Chinese]. *Zhonghua Liu Xing Bing Xue Za Zhi.* 2020;41:461–5.
 21. Jung SM, Akhmetzhanov AR, Hayashi K, Linton NM, Yang Y, Yuan B, et al. Real-time estimation of the risk of death from novel coronavirus (COVID-19) infection: inference using exported cases. *J Clin Med.* 2020;9:523. <https://doi.org/10.3390/jcm9020523>
 22. Zhang S, Diao M, Yu W, Pei L, Lin Z, Chen D. Estimation of the reproductive number of novel coronavirus (COVID-19) and the probable outbreak size on the Diamond Princess cruise ship: a data-driven analysis. *Int J Infect Dis.* 2020;93:201–4. <https://doi.org/10.1016/j.ijid.2020.02.033>
 23. Lloyd-Smith JO, Schreiber SJ, Kopp PE, Getz WM. Superspreading and the effect of individual variation on disease emergence. *Nature.* 2005;438:355–9. <https://doi.org/10.1038/nature04153>
 24. Kucharski AJ, Althaus CL. The role of superspreading in Middle East respiratory syndrome coronavirus (MERS-CoV) transmission. *Eurosurveillance.* 2015; 20:21167. <https://doi.org/10.2807/1560-7917.ES2015.20.25.21167>
 25. Liu Y, Eggo RM, Kucharski AJ. Secondary attack rate and superspreading events for SARS-CoV-2. *Lancet.* 2020;395:e47. [https://doi.org/10.1016/S0140-6736\(20\)30462-1](https://doi.org/10.1016/S0140-6736(20)30462-1)
 26. Kucharski AJ, Russell TW, Diamond C, Liu Y, Edmunds J, Funk S, et al.; Centre for Mathematical Modelling of Infectious Diseases COVID-19 working group. Early dynamics of transmission and control of COVID-19: a mathematical modelling study. *Lancet Infect Dis.* 2020;20:553–8. [https://doi.org/10.1016/S1473-3099\(20\)30144-4](https://doi.org/10.1016/S1473-3099(20)30144-4)
 27. Lai A, Bergna A, Acciari C, Galli M, Zehender G. Early phylogenetic estimate of the effective reproduction number of SARS-CoV-2. *J Med Virol.* 2020;92:675–9. <https://doi.org/10.1002/jmv.25723>
 28. Shim E, Tariq A, Choi W, Lee Y, Chowell G. Transmission potential and severity of COVID-19 in South Korea. *Int J Infect Dis.* 2020;93:339–44. <https://doi.org/10.1016/j.ijid.2020.03.031>
 29. Mizumoto K, Chowell G. Transmission potential of the novel coronavirus (COVID-19) onboard the Diamond Princess cruises ship, 2020. *Infect Dis Model.* 2020;5:264–70. <https://doi.org/10.1016/j.idm.2020.02.003>
 30. Backer JA, Klinkenberg D, Wallinga J. Incubation period of 2019 novel coronavirus (2019-nCoV) infections among travellers from Wuhan, China, 20–28 January 2020. *Euro Surveill.* 2020;25:2000062. <https://doi.org/10.2807/1560-7917.ES.2020.25.5.2000062>
 31. Linton NM, Kobayashi T, Yang Y, Hayashi K, Akhmetzhanov AR, Jung SM, et al. Incubation period and other epidemiological characteristics of 2019 novel coronavirus infections with right truncation: a statistical analysis of publicly available case data. *J Clin Med.* 2020;9:538. <https://doi.org/10.3390/jcm9020538>
 32. Leung C. The difference in the incubation period of 2019 novel coronavirus (SARS-CoV-2) infection between travelers to Hubei and nontravelers: the need for a longer quarantine period. *Infect Control Hosp Epidemiol.* 2020;41:594–6. <https://doi.org/10.1017/ice.2020.81>
 33. Zhang J, Litvinova M, Wang W, Wang Y, Deng X, Chen X, et al. Evolving epidemiology and transmission dynamics of coronavirus disease 2019 outside Hubei province, China: a descriptive and modelling study. *Lancet Infect Dis.* 2020;20:793–802. [https://doi.org/10.1016/S1473-3099\(20\)30230-9](https://doi.org/10.1016/S1473-3099(20)30230-9)
 34. Du Z, Xu X, Wu Y, Wang L, Cowling BJ, Meyers LA. Serial interval of COVID-19 among publicly reported confirmed cases. *Emerg Infect Dis.* 2020;26:1341–3. <https://doi.org/10.3201/eid2606.200357>
 35. Nishiura H, Linton NM, Akhmetzhanov AR. Serial interval of novel coronavirus (COVID-19) infections. *Int J Infect Dis.* 2020;93:284–6. <https://doi.org/10.1016/j.ijid.2020.02.060>
 36. Ganyani T, Kremer C, Chen D, Torneri A, Faes C, Wallinga J, et al. Estimating the generation interval for coronavirus disease (COVID-19) based on symptom onset data, March 2020. *Eurosurveillance.* 2020;25:2000257. <https://doi.org/10.2807/1560-7917.ES.2020.25.17.2000257>
 37. WHO–China Joint Mission on COVID-19. Report of the WHO–China Joint Mission on Coronavirus Disease 2019 (COVID-19). 2020 Feb [cited 2020 Mar 1]. <https://www.who.int/docs/default-source/coronaviruse/who-china-joint-mission-on-covid-19-final-report.pdf>
 38. Guan W, Ni Z, Hu Y, Liang W, Ou C, He J, et al. Clinical characteristics of coronavirus disease 2019 in China. *N Engl J Med.* 2020;382:1708–20. <https://doi.org/10.1056/NEJMoa2002032>
 39. Verity R, Okell LC, Dorigatti I, Winskill P, Whittaker C, Imai N, et al. Estimates of the severity of coronavirus disease 2019: a model-based analysis. *Lancet Infect Dis.* 2020;20:669–77. [https://doi.org/10.1016/S1473-3099\(20\)30243-7](https://doi.org/10.1016/S1473-3099(20)30243-7)
 40. Van Cuong L, Giang HTN, Linh LK, Shah J, Van Sy L, Hung TH, et al. The first Vietnamese case of COVID-19 acquired from China. *Lancet Infect Dis.* 2020;20:408–9. [https://doi.org/10.1016/S1473-3099\(20\)30111-0](https://doi.org/10.1016/S1473-3099(20)30111-0)
 41. Pan X, Chen D, Xia Y, Wu X, Li T, Ou X, et al. Asymptomatic cases in a family cluster with SARS-CoV-2 infection. *Lancet Infect Dis.* 2020;20:410–1. [https://doi.org/10.1016/S1473-3099\(20\)30114-6](https://doi.org/10.1016/S1473-3099(20)30114-6)
 42. Liu Y-C, Liao C-H, Chang C-F, Chou C-C, Lin Y-R. A locally transmitted case of SARS-CoV-2 infection in Taiwan. *N Engl J Med.* 2020;382:1070–2. <https://doi.org/10.1056/NEJMc2001573>
 43. Pongpirul WA, Pongpirul K, Ratnarathon AC, Prasithsirikul W. Journey of a Thai taxi driver and novel coronavirus. *N Engl J Med.* 2020;382:1067–8. <https://doi.org/10.1056/NEJMc2001621>
 44. Phan LT, Nguyen TV, Luong QC, Nguyen TV, Nguyen HT, Le HQ, et al. Importation and human-to-human transmission of a novel coronavirus in Vietnam. *N Engl J Med.* 2020;382:872–4. <https://doi.org/10.1056/NEJMc2001272>
 45. Russell T, Hellewell J, Jarvis CI, van Zandvoort K, Abbott S, Ratnayake R, et al. Estimating the infection and case fatality ratio for COVID-19 using age-adjusted data from the outbreak on the Diamond Princess cruise ship, March 2020. *Euro Surveill.* 2020;25:2000256. <https://doi.org/10.2807/1560-7917.ES.2020.25.12.2000256>
 46. Fraser C, Donnelly CA, Cauchemez S, Hanage WP, Van Kerkhove MD, Hollingsworth TD, et al.; WHO Rapid Pandemic Assessment Collaboration. Pandemic potential of a strain of influenza A (H1N1): early findings. *Science.* 2009;324:1557–61. <https://doi.org/10.1126/science.1176062>

47. Gire SK, Goba A, Andersen KG, Sealfon RSG, Park DJ, Kanneh L, et al. Genomic surveillance elucidates Ebola virus origin and transmission during the 2014 outbreak. *Science*. 2014;345:1369–72. <https://doi.org/10.1126/science.1259657>
48. Rambaut A, Holmes E. The early molecular epidemiology of the swine-origin A/H1N1 human influenza pandemic. *PLoS Curr*. 2009;1:RRN1003. <https://doi.org/10.1371/currents.RRN1003>
49. Drummond AJ, Ho SYW, Phillips MJ, Rambaut A. Relaxed phylogenetics and dating with confidence. *PLoS Biol*. 2006;4:e88. <https://doi.org/10.1371/journal.pbio.0040088>
50. Huang C, Wang Y, Li X, Ren L, Zhao J, Hu Y, et al. Clinical features of patients infected with 2019 novel coronavirus in Wuhan, China. *Lancet*. 2020;395:497–506. [https://doi.org/10.1016/S0140-6736\(20\)30183-5](https://doi.org/10.1016/S0140-6736(20)30183-5)
51. Hellewell J, Abbott S, Gimma A, Bosse NI, Jarvis CI, Russell TW, et al. Feasibility of controlling COVID-19 outbreaks by isolation of cases and contacts. *Lancet Glob Health*. 2020;8:e488–96. [https://doi.org/10.1016/S2214-109X\(20\)30074-7](https://doi.org/10.1016/S2214-109X(20)30074-7)
52. Quilty BJ, Clifford S, Flasche S, Eggo RM, CMMID nCoV Working Group 2. Effectiveness of airport screening at detecting travellers infected with novel coronavirus (2019-nCoV). *Euro Surveill*. 2020;25:2000080. <https://doi.org/10.2807/1560-7917.ES.2020.25.5.2000080>
53. Tian H, Liu Y, Li Y, Wu C-H, Chen B, Kraemer MUG, et al. An investigation of transmission control measures during the first 50 days of the COVID-19 epidemic in China. *Science*. 2020;368:638–42. <https://doi.org/10.1126/science.abb6105>
54. Anzai A, Kobayashi T, Linton NM, Kinoshita R, Hayashi K, Suzuki A, et al. Assessing the impact of reduced travel on exportation dynamics of novel coronavirus infection (COVID-19). *J Clin Med*. 2020;9:601. <https://doi.org/10.3390/jcm9020601>
55. Kwok KO, Li KK, Chan HHH, Yi YY, Tang A, Wei WI, et al. Community responses during early phase of COVID-19 epidemic, Hong Kong. *Emerg Infect Dis*. 2020;26:1575–9. <https://doi.org/10.3201/eid2607.200500>
56. Kraemer MUG, Yang C-H, Gutierrez B, Wu C-H, Klein B, Pigott DM, et al.; Open COVID-19 Data Working Group. The effect of human mobility and control measures on the COVID-19 epidemic in China. *Science*. 2020;368:493–7. <https://doi.org/10.1126/science.abb4218>
57. Cameron E, Nuzzo J, Bell J, Nalabandian M, O'Brien J, League A, et al. Global Health Security Index. Washington (DC): NTI and Johns Hopkins Center for Health Security; 2019 [cited 2020 Mar 1]. <https://www.ghsindex.org/wp-content/uploads/2019/10/2019-Global-Health-Security-Index.pdf>
58. Lipsitch M, Cohen T, Cooper B, Robins JM, Ma S, James L, et al. Transmission dynamics and control of severe acute respiratory syndrome. *Science*. 2003;300:1966–70. <https://doi.org/10.1126/science.1086616>
59. Garske T, Legrand J, Donnelly CA, Ward H, Cauchemez S, Fraser C, et al. Assessing the severity of the novel influenza A/H1N1 pandemic. *BMJ*. 2009;339:b2840. <https://doi.org/10.1136/bmj.b2840>
60. Zou L, Ruan F, Huang M, Liang L, Huang H, Hong Z, et al. SARS-CoV-2 viral load in upper respiratory specimens of infected patients. *N Engl J Med*. 2020;382:1177–9. <https://doi.org/10.1056/NEJMc2001737>
61. Yu P, Zhu J, Zhang Z, Han Y. A familial cluster of infection associated with the 2019 novel coronavirus indicating possible person-to-person transmission during the incubation period. *J Infect Dis*. 2020;221:1757–61. <https://doi.org/10.1093/infdis/jiaa077>
62. Tong Z-D, Tang A, Li K-F, Li P, Wang H-L, Yi J-P, et al. Potential presymptomatic transmission of SARS-CoV-2, Zhejiang Province, China, 2020. *Emerg Infect Dis*. 2020;26:1052–4. <https://doi.org/10.3201/eid2605.200198>
63. Bai Y, Yao L, Wei T, Tian F, Jin D-Y, Chen L, et al. Presumed asymptomatic carrier transmission of COVID-19. *JAMA*. 2020;323:1406–7. <https://doi.org/10.1001/jama.2020.256>
64. Hu Z, Song C, Xu C, Jin G, Chen Y, Xu X, et al. Clinical characteristics of 24 asymptomatic infections with COVID-19 screened among close contacts in Nanjing, China. *Sci China Life Sci*. 2020;63:706–11. <https://doi.org/10.1007/s11427-020-1661-4>

Address for correspondence: Katelijn A. Vandemaele, Health Emergencies Programme, World Health Organization, 20, avenue Appia, 1211 Geneva 27, Switzerland; email vandemaelek@who.int

Early Insights from Statistical and Mathematical Modeling of Key Epidemiologic Parameters of COVID-19

Appendix

Appendix Table 1. Search terms in study of modeling of key epidemiologic parameters of COVID-19

Topic	Search terms
	"nCoV," "2019-nCoV," "nCoV-2019," "COVID," "COVID-19," "novel coronavirus," "SARS-CoV-2" AND "evolution*" or "phylogenetics"
Incubation period	In PubMed, medRxiv, bioRxiv and arXiv: #1: "incubation period" #2: "coronavirus" OR "nCoV" OR "COVID" OR "COVID-19" OR "2019-nCoV" OR "nCoV-2019" OR "SARS-CoV-2" #3: #1 AND #2 In SSRN: #1: "incubation period" #2: "coronavirus" OR "nCoV" OR "COVID" OR "COVID-19" OR "2019-nCoV" OR "nCoV-2019" OR "SARS-CoV-2" #3: #1 AND search within each of the term in #2 In research square, Virological, and Wellcome Open Research: #1: "coronavirus" OR "nCoV" OR "COVID" OR "COVID-19" OR "2019-nCoV" OR "nCoV-2019" OR "SARS-CoV-2" Then read through all the papers
Serial interval	In PubMed: #1: "serial interval" OR "generation interval" OR "generation time" OR "serial distribution" OR "secondary infections" OR "secondary cases" #2: "coronavirus" OR "nCoV" OR "COVID" OR "COVID-19" OR "2019-nCoV" OR "nCoV-2019" OR "SARS-CoV-2" #3: #1 AND #2 In medRxiv, bioRxiv, and arXiv: #1: "serial interval" #2: "coronavirus" OR "nCoV" OR "COVID" OR "COVID-19" OR "2019-nCoV" OR "nCoV-2019" OR "SARS-CoV-2" #3: #1 AND #2 In SSRN: #1: "serial interval" #2: "coronavirus" OR "nCoV" OR "COVID" OR "COVID-19" OR "2019-nCoV" OR "nCoV-2019" OR "SARS-CoV-2" #3: #1 AND search within each of the term in #2 In research square, Virological, and Wellcome Open Research: #1: "coronavirus" OR "nCoV" OR "COVID" OR "COVID-19" OR "2019-nCoV" OR "nCoV-2019" OR "SARS-CoV-2" Then read through all the papers
Generation interval	In PubMed and arXiv: #1: "generation interval" #2: "coronavirus" OR "nCoV" OR "COVID" OR "COVID-19" OR "2019-nCoV" OR "nCoV-2019" OR "SARS-CoV-2" #3: #1 AND #2 In medRxiv and bioRxiv:

Topic	Search terms
	<p>"generation interval" for full text or abstract or title (match whole all)</p> <p>In SSRN: #1: "generation interval" #2: "coronavirus" OR "nCoV" OR "COVID" OR "COVID-19" OR "2019-nCoV" OR "nCoV-2019" OR "SARS-CoV-2" #3: #1 AND search within each of the term in #2</p> <p>In research square, Virological, and Wellcome Open Research: #1: "coronavirus" OR "nCoV" OR "COVID" OR "COVID-19" OR "2019-nCoV" OR "nCoV-2019" OR "SARS-CoV-2" Then read through all the papers</p>
Doubling time	<p>In PubMed, medRxiv, bioRxiv and arXiv: #1: "doubling time" OR "growth rate" #2: "coronavirus" OR "nCoV" OR "COVID" OR "COVID-19" OR "2019-nCoV" OR "nCoV-2019" OR "SARS-CoV-2" #3: #1 AND #2</p> <p>In SSRN: #1: "doubling time" OR "growth rate" #2: "coronavirus" OR "nCoV" OR "COVID" OR "COVID-19" OR "2019-nCoV" OR "nCoV-2019" OR "SARS-CoV-2" #3: #1 AND search within each of the term in #2</p> <p>In research square, Virological, and Wellcome Open Research: #1: "coronavirus" OR "nCoV" OR "COVID" OR "COVID-19" OR "2019-nCoV" OR "nCoV-2019" OR "SARS-CoV-2" Then read through all the papers</p>
CFR	<p>In PubMed: ("coronavirus"[MeSH Terms] OR "coronavirus"[All Fields] OR "2019-ncov"[All Fields] OR "COVID-19"[All Fields] OR "COVID"[All Fields] OR "SARS-COV-2"[All Fields] OR "ncov"[All Fields] OR "ncov-2019"[All Fields]) AND "2019/12/31 00.00"[MHDA]: "2020/03/06 23.59"[MHDA] AND ("fatality"[All Fields] OR "Case Fatality"[All Fields] OR "Infection Fatality"[All Fields])</p> <p>In biorXiv and medRxiv: for title "coronavirus fatality" (match all words) and abstract or title "coronavirus fatality" (match all words) and posted between "01 Jan 2020 and 07 Mar 2020"</p> <p>In arXiv: Query: order: -announced_date_first; size: 50; date_range: from 2020-01-01 to 2020-03-07; include_cross_list: True; terms: AND abstract = coronavirus; AND abstract = fatality</p> <p>In ResearchSquare: SARS-CoV-2 Preprints</p> <p>In Wellcome Research: Query: "coronavirus"</p> <p>In WHO Global Research Database: Query: "sever*"</p> <p>Cited by WHO: Imperial College London, IDO</p>
Nonpharmaceutical interventions	<p>In all databases: "coronavirus" OR "nCoV" OR "COVID" OR "COVID-19" OR "2019-nCoV" OR "nCoV- 2019" OR "SARS-CoV-2"</p>

Appendix Table 2. Summary of published studies on COVID-19 included in review of incubation period, serial interval, doubling time, and generation interval*

Study	Study setting	Incubation period (days)	Serial interval (days)	Doubling time (days)	Generation interval (days)
Backer 2020 (1)	88 confirmed cases detected outside Wuhan, Jan 20–28, 2020	Mean 6.4, median NA, SD 2.3, 95% CrI 5.6–7.7 based on Weibull distribution	NA	NA	NA
Chinazzi 2020 (2)	Modeling study	NA	NA	4.2 (90% CI 3.8–4.7) based on reporting dates	NA
Du 2020a (3)	Modeling study	NA	NA	7.31 (95% CrI 6.26–9.66) based on onset dates	NA
Du 2020b (4)	468 confirmed infector–infectee pairs in 18 Chinese provinces, from Jan 21– Feb 8, 2020	NA	Mean 3.96, median NA, SD 4.75, 95% CI 3.53–4.39, based on normal distribution	NA	NA
Ganyani 2020 (5)	Modeling study	NA	Mean 5.21, median NA, SD 4.32, 95% CrI –3.35 to 13.94 in Singapore	NA	Mean 5.20, median NA, SD 1.72, 95% CrI 3.78–6.78 in Singapore
Ganyani 2020 (5)	Modeling study	NA	Mean 3.95, median NA, SD 4.24, 95% CrI –4.47 to 12.51 in Tianjin, China	NA	Mean 3.95, median NA, SD 1.51, 95% CrI 3.01–4.91 in Tianjin, China
Jung 2020 (6)	Modeling study	NA	NA	4.62 (95% CI 4.62–4.95) from a single index case with illness onset on Dec 8, 2019, calculated by growth rate of 0.15 (95% CI 0.14–0.15) based on reporting dates	NA
Jung 2020 (6)	Modeling study	NA	NA	2.39 (95% CI 1.93–3.15) from 20 exported cases reported by Jan 24, 2020, calculated by growth rate of 0.29 (95% CI 0.22–0.36) based on reporting dates	NA
Leung 2020 (7)	175 confirmed patients in China, Jan 20–Feb 12, 2020	Mean 1.8, median NA, SD NA, 95% CI 1.0–2.7 based on travelers to Hubei fitting to Weibull distribution	NA	NA	NA
Leung 2020 (7)	175 confirmed patients in China, Jan 20–Feb 12, 2020	Mean 7.2, median NA, SD NA, 95% CI 6.1–8.4 based on nontravelers fitting to Weibull distribution	NA	NA	NA
Li 2020 (8)	425 confirmed cases in Wuhan as of Jan 22, 2020	Mean 5.2, median NA, SD NA, 95% CI 4.1–7.0 based on log-normal distribution	Mean 7.5, median NA, SD 3.4, 95% CI 5.3–19.0 based on gamma distribution	7.4 (95% CI 4.2–14.0) based on onset dates	NA
Linton 2020 (9)	158 confirmed cases in and outside Wuhan as of Jan 31, 2020 (52 cases when excluding Wuhan residents)	Mean 5.6, median NA, SD NA, 95% CrI 5.0–6.3 based on 158 cases	NA	NA	NA
Linton 2020 (9)	158 confirmed cases in and outside Wuhan as of Jan 31, 2020 (52 cases)	Mean 5.0, median NA, SD NA, 95% CrI 4.2–6.0 based on 52 cases	NA	NA	NA

Study	Study setting	Incubation period (days)	Serial interval (days)	Doubling time (days)	Generation interval (days)
Nishiura 2020 (10)	when excluding Wuhan residents) 28 infector–infectee pairs from published research articles as of Feb 12, 2020	NA	Mean 4.7, median 4.0, SD 2.9, 95% CrI 3.7–6.0 based on all 28 pairs fitting to log-normal distribution	NA	NA
Nishiura 2020 (10)	18 pairs with highest certainty from published research articles as of Feb 12, 2020	NA	Mean 4.8, median 4.6, SD 2.3, 95% CrI 3.8–6.1 based on 18 certain pairs fitting to Weibull distribution	NA	NA
Sanche 2020 (11)	Modeling study	NA	NA	2.4 (95% CI 1.9–3.3) based on onset dates	NA
Wu 2020 (12)	Modeling study	NA	NA	6.4 (95% CrI 5.8–7.1) based on onset dates	NA
Zhang 2020 (13)	8,579 confirmed cases reported outside Hubei in China as of Feb 17, 2020 (only 49 cases with no travel history to/from Wuhan/Hubei)	Mean 5.2, median NA, SD NA, 95% CI 1.8–12.4 based on log-normal distribution	Mean 5.1, median NA, SD NA, 95% CI 1.3–11.6 based on gamma distribution	NA	NA

*CI, confidence interval; CrI, credible interval; NA, not applicable; SD, standard deviation

Appendix Table 3. Summary of the COVID-19 studies included in the review of incubation period, serial interval, and doubling time based on search in gray literature*

Study	Study setting	Incubation period (days)	Serial interval (days)	Doubling time (days)
Bedford, unpub. data, http://virological.org/t/phylogenetic-analysis-176-genomes-6-mar-2020/356	53 publicly available nCoV genomes collected between Dec 24, 2019–Feb 4, 2020	NA	NA	7.2 (95% CI 5.0–12.9) based on sample collection dates
Lu et al., unpub. data, https://www.medrxiv.org/content/10.1101/2020.02.19.20025031v1	265 confirmed cases in Shanghai before Feb 7, 2020 (only 27 had credible contact information)	Mean 6.4, median NA, SD NA, 95% CI 5.3–7.6 based on Weibull distribution	NA	NA
Pinotti et al., unpub. data, https://www.medrxiv.org/content/10.1101/2020.02.24.20027326v1	Modeling study	NA	NA	2.67 (95% CI 2.24–3.30) importations from Hubei, calculated by growth rate of 0.26 (95% CI 0.21–0.31) based on reporting dates
Rambaut, unpub. data, http://virological.org/t/phylogenetic-analysis-176-genomes-6-mar-2020/356	75 genomes on Feb 12, 2020; 86 genomes on Feb 24, 2020	NA	NA	6.2 (95% CI 4.1–12.3), 75 genomes based on sample collection dates
Rambaut, unpub. data, http://virological.org/t/phylogenetic-analysis-176-genomes-6-mar-2020/356	75 genomes on Feb 12, 2020; 86 genomes on Feb 24, 2020	NA	NA	7.2 (95% CI 4.7–16.3), 86 genomes based on sample collection dates
Tindale et al., unpub. data, https://www.medrxiv.org/content/10.1101/2020.03.03.20029983v1	93 confirmed cases in Singapore during Jan 19–Feb 26, 2020	Mean 7.11, median: 6.55, SD NA, 95% CI 6.13–8.25 based on Weibull distribution	Mean 4.56, median NA, SD 0.95, 95% CI 2.69–6.42 based on expectation-maximization approach	NA
Tindale et al., unpub. data, https://www.medrxiv.org/content/10.1101/2020.03.03.20029983v1	125 confirmed cases in Tianjin during Jan 21–Feb 22, 2020	Mean 9.02, median 8.62, SD NA, 95% CI 7.92–10.2 based on Weibull distribution	Mean 4.22, median NA, SD 0.4, 95% CI 3.43–5.01 based on expectation-maximization approach	NA
Volz et al., unpub. data, https://spiral.imperial.ac.uk/bitstream/10044/1/77169/1/2020-02-15-COVID19-Report-5.pdf	Phylogenetic analysis of 53 SARS-CoV-2 whole genome sequences	NA	NA	7.1 (95% CI 3.0–20.5) based on sample collection dates
Zhao et al., unpub. data, https://www.medrxiv.org/content/10.1101/2020.02.21.20026559v1	21 infector–infectee pairs in Hong Kong during Jan 16–Feb 15, 2020	NA	Mean 4.4, median NA, SD 3.0, 95% CI 2.9–6.7, based on gamma distribution	NA
Zhao et al., unpub. data, https://www.medrxiv.org/content/10.1101/2020.02.06.20020941v1	Modeling study	NA	NA	2.9 (95% CrI 2.0–4.1) based on onset dates

*CI, confidence interval; CrI, credible interval; NA, not applicable; SD, standard deviation

Appendix Table 4. Frequency of different case severities

Classification	Definition	Proportion*
Mild/moderate	Non-pneumonia and pneumonia cases	80.9%
Severe	Dyspnea, respiratory frequency ≥ 30 /minute, blood oxygen saturation $\leq 93\%$, PaO ₂ /FiO ₂ ratio < 300 , and/or lung infiltrates $> 50\%$ within 24–48 h	13.8%
Critical	Respiratory failure, septic shock, and/or multiple organ dysfunction/failure	6.1%

* Proportion of 55,924 cases until Feb 20, 2020.

Appendix Table 5. Summary of CFR and IFR estimate sources

Author	Location	Metric*	Estimate	Uncertainty type	Peer-reviewed	Source
Russell et al.	China	IFR	0.6 (0.2–1.3)	95% CI	Yes	https://www.ncbi.nlm.nih.gov/pubmed/32234121
Hauser et al.	China, Hubei	IFR	3.3 (2–4.7)	95% CrI	No	https://www.medrxiv.org/content/10.1101/2020.03.04.20031104v2.full.pdf
Famulare	China, Wuhan	IFR	0.9 (0.4–2.9)	95% CI	No	https://instituteofdiseasemodeling.github.io/nCoV-public/analyses/first_adjusted_mortality_estimates_and_risk_assessment/2019-nCoV-preliminary_age_and_time_adjusted_mortality_rates_and_pandemic_risk_assessment.html
Mizumoto et al.	China, Wuhan	IFR	0.2 (0.2–0.3)	95% CrI	No	https://www.medrxiv.org/content/10.1101/2020.02.12.20022434v1
Russell et al.	Diamond Princess	IFR	1.3 (0.4–3.6)	95% CI	Yes	https://www.ncbi.nlm.nih.gov/pubmed/32234121
Hauser et al.	Northern Italy	IFR	3 (2.6–3.4)	95% CrI	No	https://www.medrxiv.org/content/10.1101/2020.03.04.20031104v1.full.pdf
Nishiura et al.†	Mainland China	IFR	NA (0.3–0.6)	95% CI	Yes	https://www.mdpi.com/2077-0383/9/2/419
Verity et al.	Mainland China	IFR	0.7 (0.4–1.3)	95% CrI	Yes	https://www.thelancet.com/journals/laninf/article/PIIS1473-3099(20)30243-7/fulltext
Russell et al.	China	CFR	1.2 (0.3–2.7)	95% CI	Yes	https://www.ncbi.nlm.nih.gov/pubmed/32234121
Deng et al.	China, Hubei	CFR	5.4 (5.3–5.6)	95% CI	No	https://www.medrxiv.org/content/10.1101/2020.03.04.20031005v1
Mizumoto et al.	China, Hubei not Wuhan	CFR	0.9 (0.6–1.3)	95% CrI	No	https://www.medrxiv.org/content/10.1101/2020.02.19.20025163v1
Deng et al.	China, not Hubei	CFR	0.9 (0.8–1.1)	95% CI	No	https://www.medrxiv.org/content/10.1101/2020.03.04.20031005v1
Deng et al.	China, not Wuhan	CFR	3.5 (3.4–3.8)	95% CI	No	https://www.medrxiv.org/content/10.1101/2020.03.04.20031005v1
Deng et al.	China, Wuhan	CFR	6.2 (6.1–6.4)	95% CI	No	https://www.medrxiv.org/content/10.1101/2020.03.04.20031005v1
Mizumoto et al.	China, Wuhan	CFR	18.9 (17.1–20.8)	95% CrI	No	https://www.medrxiv.org/content/10.1101/2020.02.19.20025163v1
Russell et al.	Diamond Princess	CFR	2.6 (0.9–6.7)	95% CI	Yes	https://www.ncbi.nlm.nih.gov/pubmed/32234121
Deng et al.	Mainland China	CFR	4.5 (4.5–4.7)	95% CI	No	https://www.medrxiv.org/content/10.1101/2020.03.04.20031005v1
Wang et al.	China, Hubei	sCFR	7.2 (6.6–8)	95% CI	No	https://www.medrxiv.org/content/10.1101/2020.02.17.20023630v4
Wang et al.	China, not Hubei	sCFR	1 (0.9–1.2)	95% CI	No	https://www.medrxiv.org/content/10.1101/2020.02.17.20023630v4
Verity et al.	Mainland China	sCFR	1.4 (1.2–1.5)	95% CrI	Yes	https://www.thelancet.com/journals/laninf/article/PIIS1473-3099(20)30243-7/fulltext
Famulare	China, Wuhan	cCFR	33 (29–37)	95% CI	No	https://instituteofdiseasemodeling.github.io/nCoV-public/analyses/first_adjusted_mortality_estimates_and_risk_assessment/2019-nCoV-preliminary_age_and_time_adjusted_mortality_rates_and_pandemic_risk_assessment.html
Jung et al. ‡	Mainland China	cCFR	5.3 (3.5–7.5)	95% CI	Yes	https://www.ncbi.nlm.nih.gov/pubmed/32075152
Jung et al. §	Mainland China	cCFR	8.4 (5.3–12.3)	95% CI	Yes	https://www.ncbi.nlm.nih.gov/pubmed/32075152

Author	Location	Metric *	Estimate	Uncertainty type	Peer-reviewed	Source
Verity et al.	Outside mainland China (non-parametric)	cCFR	4.1 (2.1–7.8)	95% CrI	Yes	https://www.thelancet.com/journals/laninf/article/PIIS1473-3099(20)30243-7/fulltext
Verity et al.	Outside mainland China (parametric)	cCFR	2.7 (1.4–4.7)	95% CrI	Yes	https://www.thelancet.com/journals/laninf/article/PIIS1473-3099(20)30243-7/fulltext
Wu et al.	China, Wuhan	HFR	14 (3.9–32)	95% CI	Yes	https://www.eurosurveillance.org/content/10.2807/1560-7917.ES.2020.25.3.2000044
Deng et al.	China, Hubei	ccCFR	25.7 (25.4–26.5)	95% CI	No	https://www.medrxiv.org/content/10.1101/2020.03.04.20031005v1
Deng et al.	China, not Hubei	ccCFR	8 (7.5–9.6)	95% CI	No	https://www.medrxiv.org/content/10.1101/2020.03.04.20031005v1
Deng et al.	China, not Wuhan	ccCFR	28.8 (28–31)	95% CI	No	https://www.medrxiv.org/content/10.1101/2020.03.04.20031005v1
Deng et al.	China Wuhan	ccCFR	26.9 (26.6–27.9)	95% CI	No	https://www.medrxiv.org/content/10.1101/2020.03.04.20031005v1
Deng et al.	mainland China	ccCFR	24.2 (23.9–25)	95% CI	No	https://www.medrxiv.org/content/10.1101/2020.03.04.20031005v1

*CFR, case fatality ratio; sCFR, symptomatic CFR; cCFR, laboratory-confirmed CFR; ccCFR, critical care and severe CFR; HFR, hospitalization fatality ratio; IFR, infection fatality ratio.
†Range based on ≈10% ascertainment.
‡Fitted to epidemic growth alone.
§Fitted to epidemic growth along with other parameters.

Appendix Table 6. Types of nonpharmaceutical interventions that could be implemented at the individual and community level

Type	Nonpharmaceutical intervention
Individual interventions	Voluntary home isolation: separation of persons ill with contagious diseases from noninfected persons
	Voluntary home quarantine: restriction of persons who are presumed to have been exposed to a contagious disease but are not ill, either because they did not become infected or because they are still in the incubation period
Community level	School closure (closure of day care facilities, schools, and higher education)
	Workplace closure (closure of nonessential services)
	Cancel or postpone large public gatherings

Appendix Table 7. Definition of nonpharmaceutical intervention search keywords*

Topic	Definition
Case detection, case detected	Detection of cases imported from an affected area
Case isolation and contact tracing	Isolation of an identified positive case.
Travel screening'	Screening of passengers at port of exit/entry
Travel reduction, reduced travel, airline suspension	Mobility reduction of persons, intra- or inter-city/country.
School closure	Closing schools to prevent further transmission
Cancellation of events and mass gatherings, lockdown	Cancellation of events and mass gatherings to prevent further transmission.
Community response	Population's psychological and behavioral responses during an outbreak

*This table gives a short definition of the search keywords related to nonpharmaceutical intervention we are interested in. Because there are no specific terms to describe these interventions, or there are different terms to describe the same kind of intervention, we considered them to be equivalent.

References

1. Backer JA, Klinkenberg D, Wallinga J. Incubation period of 2019 novel coronavirus (2019-nCoV) infections among travellers from Wuhan, China, 20–28 January 2020. *Euro Surveill.* 2020;25:2000062. PubMed <https://doi.org/10.2807/1560-7917.ES.2020.25.5.2000062>
2. Chinazzi M, Davis JT, Ajelli M, Gioannini C, Litvinova M, Merler S, et al. The effect of travel restrictions on the spread of the 2019 novel coronavirus (COVID-19) outbreak. *Science.* 2020;368:395–400. <https://doi.org/10.1126/science.aba9757>
3. Du Z, Wang L, Cauchemez S, Xu X, Wang X, Cowling BJ, et al. Risk for transportation of 2019 novel coronavirus disease from Wuhan to other cities in China. *Emerg Infect Dis.* 2020;26:1049–52. <https://doi.org/10.3201/eid2605.200146>
4. Du Z, Xu X, Wu Y, Wang L, Cowling BJ, Meyers L. Serial interval of COVID-19 among publicly reported confirmed cases. *Emerg Infect Dis.* 2020;26:1341–3. <https://dx.doi.org/10.3201/eid2606.200357>
5. Ganyani T, Kremer C, Chen D, Torneri A, Faes C, Wallinga J, et al. Estimating the generation interval for coronavirus disease (COVID-19) based on symptom onset data, March 2020. *Eurosurveillance.* 2020;25:2000257. <https://doi.org/10.2807/1560-7917.ES.2020.25.17.2000257>
6. Jung SM, Akhmetzhanov AR, Hayashi K, Linton NM, Yang Y, Yuan B, et al. Real-time estimation of the risk of death from novel coronavirus (COVID-19) infection: inference using exported cases. *J Clin Med.* 2020;9:523. PubMed <https://doi.org/10.3390/jcm9020523>
7. Leung C. The difference in the incubation period of 2019 novel coronavirus (SARS-CoV-2) infection between travelers to Hubei and nontravelers: the need for a longer quarantine period. *Infect Control Hosp Epidemiol.* 2020;41:594–6. PubMed <https://doi.org/10.1017/ice.2020.81>
8. Li Q, Guan X, Wu P, Wang X, Zhou L, Tong Y, et al. Early transmission dynamics in Wuhan, China, of novel coronavirus–infected pneumonia. *N Eng J Med.* 2020;382:1199–1207. <https://doi.org/10.1056/NEJMoa2001316>
9. Linton NM, Kobayashi T, Yang Y, Hayashi K, Akhmetzhanov AR, Jung SM, et al. Incubation period and other epidemiological characteristics of 2019 novel coronavirus infections with right truncation: a statistical analysis of publicly available case data. *J Clin Med.* 2020;9:538. PubMed <https://doi.org/10.3390/jcm9020538>

10. Nishiura H, Linton NM, Akhmetzhanov AR. Serial interval of novel coronavirus (COVID-19) infections. *Int J Infect Dis.* 2020;93:284–6. PubMed <https://doi.org/10.1016/j.ijid.2020.02.060>
11. Sanche S, Lin YT, Xu C, Romero-Severson E, Hengartner N, Ke R. High contagiousness and rapid spread of severe acute respiratory syndrome coronavirus 2. *Emerg Infect Dis.* 2020;26:1470–7. <https://doi.org/10.3201/eid2607.200282>
12. Wu JT, Leung K, Leung GM. Nowcasting and forecasting the potential domestic and international spread of the 2019-nCoV outbreak originating in Wuhan, China: a modelling study. *Lancet.* 2020;395:689–97. PubMed [http://dx.doi.org/10.1016/S0140-6736\(20\)30260-9](http://dx.doi.org/10.1016/S0140-6736(20)30260-9)
13. Zhang J, Litvinova M, Wang W, Wang Y, Deng X, Chen X, et al. Evolving epidemiology and transmission dynamics of coronavirus disease 2019 outside Hubei province, China: a descriptive and modelling study. *Lancet Infect Dis.* 2020;20:793–802. [https://doi.org/10.1016/S1473-3099\(20\)30230-9](https://doi.org/10.1016/S1473-3099(20)30230-9)