

New Delhi Metallo- β -Lactamase 5-Producing *Klebsiella pneumoniae* Sequence Type 258, Southwest China, 2017

Xin Zhang,¹ Weimin Wan,¹ Hua Yu,¹ Min Wang,
Haifang Zhang, Jingnan Lv, Yi-Wei Tang,
Barry N. Kreiswirth, Hong Du, Liang Chen

We isolated a New Delhi metallo- β -lactamase 5 (NDM-5)-producing *Klebsiella pneumoniae* sequence type (ST) 258 strain in southwest China during 2017. The *bla*_{NDM-5} gene was acquired by horizontal plasmid transfer from NDM-5-producing *Escherichia coli*. We identified genomic characteristics in ST258 strains that differed from those of global *K. pneumoniae* carbapenemase-producing strains.

Carbapenem-resistant *Klebsiella pneumoniae* has emerged as one of the major multidrug-resistant bacterial pathogens worldwide. The international spread of this pathogen has been linked to a few high-risk clone group (CG) strains, including CG258, CG14/15, CG17/20, CG43, CG147, and CG307 (1), of which CG258 is the most widely spread. Within CG258, sequence type (ST) 258 predominates in North America and Europe, but ST11 is the primary carbapenem-resistant *K. pneumoniae* clone in eastern Asia, especially in China (2–4).

In recent years, *K. pneumoniae* ST11 strains have been increasingly identified in North America. In contrast, ST258 strains are still rarely reported in China (5). Unlike other high-risk clones, such as ST11, that harbor different types of carbapenemases, carbapenem-resistant *K. pneumoniae* ST258 are almost exclusively associated with *K. pneumoniae* carbapenemase (KPC) (6). We report identification of a New Delhi metallo- β -lactamase 5 (NDM-5)-producing *K. pneumoniae* ST258 strain from Chengdu in southwest China.

The Study

In June 2017, a *K. pneumoniae* strain (Kp2588) that has an extended-spectrum β -lactamase phenotype was isolated from

Author affiliations: Sichuan Academy of Medical Science, and Sichuan Provincial People's Hospital, Sichuan, China (X. Zhang, H. Yu); Memorial Sloan Kettering Cancer Center, New York, New York, USA (X. Zhang, Y.-W. Tang); The Second Affiliated Hospital of Soochow University, Suzhou, China (W. Wan, M. Wang, H. Zhang, J. Lv, H. Du); Rutgers University, Newark, New Jersey, USA (B.N. Kreiswirth, L. Chen)

DOI: <https://doi.org/10.3201/eid2506.181939>

a blood culture of a male patient in a large tertiary-care hospital in Chengdu in southwest China. Two days later, a carbapenem-resistant *Escherichia coli* strain (Ec2551) was isolated from a urine culture, and 1 week later, a carbapenem-resistant *K. pneumoniae* strain (Kp2573) was isolated from another urine culture, both from the same patient (Appendix, <https://wwwnc.cdc.gov/EID/article/25/6/18-1939-App1.pdf>).

PCR testing and Sanger sequencing showed that Ec2551 and Kp2573 both harbored the New Delhi metallo- β -lactamase gene *bla*_{NDM-5}. Multilocus sequence typing further showed that Ec2551 is an ST48 strain, and Kp2588 and Kp2573 belong to the high-risk clone ST258.

Susceptibility testing showed that the initial Kp2588 blood isolate was resistant to most cephalosporins and aztreonam but susceptible to cefepime, carbapenems, amoxicillin/clavulanic acid, piperacillin/tazobactam, amikacin, and tigecycline (Table). In contrast, the urinary isolates Ec2551 and Kp2573 were resistant to all β -lactams and β -lactam/ β -lactamase inhibitors, including the 4 carbapenems tested in this study (Table).

We conducted next-generation sequencing (NGS; Illumina HiSeq, <https://www.illumina.com>) for all 3 isolates and deposited data in the National Center for Biotechnology (NCBI) Bioproject PRJNA354234 (<https://www.ncbi.nlm.nih.gov/bioproject>) GenBank database (accession nos. RXHE000000000, RXHG000000000 and RXHF000000000, respectively). Analysis of resistance genes and plasmid sequences showed that the 2 ST258 *K. pneumoniae* isolates carried similar resistance and plasmid replicon genes, except that Kp2573 harbored *bla*_{NDM-5} and an IncX3 plasmid replicon (Figure 1). *E. coli* strain Ec2551 had the same *bla*_{NDM-5} and IncX3 replicon genes as Kp2573, but also had a diverse array of other resistance and plasmid replicon genes in comparison with the 2 *K. pneumoniae* isolates (Figure 2).

We then transferred *bla*_{NDM-5}-harboring plasmids from Ec2551 and Kp2573 to recipient strain *E. coli* J53^{AZR} by conjugation, followed by plasmid NGS as described. Plasmid sequence analysis showed that Ec2551 and Kp2573 carry an identical *bla*_{NDM-5}-harboring IncX3 plasmid. The plasmid is 46,161 bp and is identical to several *bla*_{NDM-5}-harboring plasmids identified in China and other countries

¹These authors contributed equally to this article.

Table. Antimicrobial drug susceptibility of 3 bacterial isolates producing New Delhi metallo- β -lactamase 5, southwest China, 2017*

Characteristic	Species, strain, and MIC, mg/L		
	<i>Klebsiella pneumoniae</i> , Kp2588	<i>Escherichia coli</i> , Ec2551	<i>K. pneumoniae</i> , Kp2573
Source	Blood	Urine	Urine
Sequence type	258	48	258
Drug			
Meropenem	≤ 0.25	≥ 16	≥ 16
Imipenem	≤ 0.25	≥ 16	≥ 16
Doripenem	≤ 0.12	≥ 8	≥ 8
Ertapenem	≤ 0.5	≥ 8	≥ 8
Ampicillin	≥ 32	≥ 32	≥ 32
Ticarcillin	≥ 128	≥ 128	≥ 128
Cephalothin	≥ 64	≥ 64	≥ 64
Cefazolin	≥ 64	≥ 64	≥ 64
Cefuroxime	≥ 64	≥ 64	≥ 64
Ceftazidime	16	≥ 64	≥ 64
Cefotaxime	≥ 64	≥ 64	≥ 64
Ceftriaxone	≥ 64	≥ 64	≥ 64
Cefpodoxime	≥ 8	≥ 8	≥ 8
Ceftizoxime	≤ 1	≥ 64	≥ 64
Cefepime	2	≥ 64	≥ 64
Cefotetan	≤ 4	≥ 64	≥ 64
Aztreonam	≥ 64	≥ 64	≥ 64
Piperacillin	≥ 128	≥ 128	≥ 128
Ampicillin/sulbactam	$\geq 32/16$	$\geq 32/16$	$\geq 32/16$
Amoxicillin/clavulanic acid	16/8	$\geq 32/16$	$\geq 32/16$
Piperacillin/tazobactam	64/4	$\geq 128/4$	$\geq 128/4$
Nitrofurantoin	256	≤ 16	256
Gentamicin	≥ 16	≥ 16	≥ 16
Tobramycin	≥ 16	≥ 16	≥ 16
Amikacin	4	≤ 2	4
Ciprofloxacin	≥ 4	≥ 4	≥ 4
Levofloxacin	≥ 8	≥ 8	≥ 8
Moxifloxacin	≥ 8	≥ 8	≥ 8
Trimethoprim/sulfamethoxazole	$\geq 16/304$	$\geq 16/304$	$\geq 16/304$
Nalidixic acid	≥ 32	≥ 32	≥ 32
Tetracycline	≥ 16	≥ 16	≥ 16
Tigecycline	2	≤ 0.5	2

*Drug-resistant MICs are indicated in bold. Antimicrobial susceptibility testing was conducted by using the VITEK 2 system (bioMérieux, <https://www.biomerieux.com>).

(e.g., GenBank accession nos. CP032424, MF679143, MG591703, CP028705, and CP024820). Core single-nucleotide polymorphism (SNP) analysis showed that Kp2588 differed from Kp2573 by 1 SNP. These results strongly suggest that carbapenem-resistant Kp2573 might have evolved from the carbapenem-susceptible blood isolate Kp2588 by acquisition of a *bla*_{NDM-5}-harboring IncX3 plasmid from the same patient.

To date, carbapenemases other than KPC have rarely been described in clinical *K. pneumoniae* ST258 strains (7,8). In this study, we had the opportunity to investigate the phylogenetic relationship between NDM-5-producing ST258 (designated as the China ST258 clone) and other global KPC-producing ST258 strains (Figure 2, panel A). Phylogenetic analysis of core SNPs from the 2 China ST258 genomes and 76 completely closed ST258 ($n = 39$) and ST11 ($n = 36$) genomes from NCBI showed that Kp2573/Kp2588 belongs to a separate clade distinct from global ST258 and ST11 strains (Figure 2, panel A). Kp2573/Kp2588 differs from global ST258 genomes by an average of 88 core SNPs (range

54–135) and from ST11 strains by an average of 109 core SNPs (range 79–132).

Results indicated that Kp2573/Kp2588 and the global ST258 strains both evolved from a common ancestor. A different core SNP phylogenetic analysis of Kp2573/Kp2588 with 824 ST258 genomes (including both draft assemblies and completely closed genomes) from NCBI showed similar results, suggesting that Kp2573/Kp2588 has unique genetic characteristics in comparison with other global ST258 strains.

Recent phylogenetic analysis showed that global ST258 strains have unique genetic characteristics that might contribute to their epidemic spread. For example, global ST258 strains carry a unique integrative and conjugative element (ICE) known as ICEKp258.2 (3). This chromosomal element is conserved among nearly all ST258 strains, harboring a type IV pilus gene cluster and a type III restriction-modification system, which might contribute to plasmid acquisition or plasmid–host specificity (9). However, ICEKp258.2 is absent from genomes of Kp2573/Kp2588 (Figure 2, panel A). In addition, global

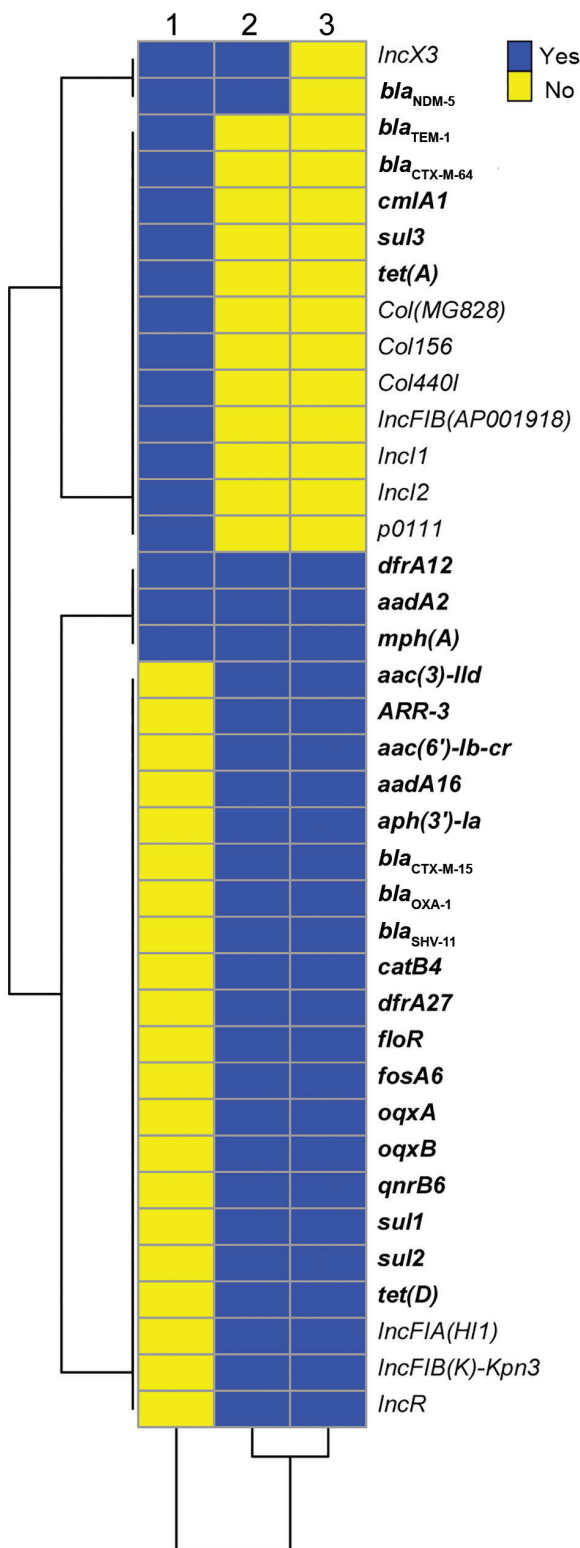


Figure 1. Comparison of resistance genes and plasmid replicons for 3 bacterial isolates producing New Delhi metallo-β-lactamase 5, southwest China, 2017. 1, *Escherichia coli* 2551; 2, *Klebsiella pneumoniae* 2573; 3, *K. pneumoniae* 2588. Resistance genes are shown in bold.

ST258 strains have a common Ser34Phe amino acid substitution in the homodimerization region of MarR, a transcriptional regulator protein of the multiple antimicrobial drug resistance repressor family (10). It is hypothesized that this substitution might affect the overall metabolic activity in ST258 (10). Kp2573/Kp2588 has the ancestral MarR Ser34 genotype, similar to ST11 strains, but all global ST258 strains have the Phe34 genotype. Furthermore, all global ST258 strains contain a frame-shift mutation that results in a premature stop codon at amino acid position 89 in outer membrane protein OmpK35 because of a guanine insertion at nt position 121. In contrast, Kp2573/Kp2588 do not have the nt121G insertion in the *ompK35* gene but have an IS1 insertion at nt position 28. These genetic changes further suggest that the 2 China ST258 strains have distinct evolutionary paths compared with those of global ST258 strains.

These observations have also updated our previous hypothesis regarding the molecular evolution of ST258 (Figure 2, panel B) (9). Our initial study suggested that the prototypical ST258 strain arose as a consequence of recombination of large segments of the ST11 and ST442 genomes, such that it has the same *wzi154*/KL107 (previously named *cps-2*/clade II) capsular type as the parental ST442 strain (9). Additional genotypic changes, including acquisition of ICEKp258.2, the MarR Ser34Phe substitution, and the *ompK35* nt121G insertion, as well as the acquisition of KPC plasmids in ST258 clade II strains, define the global KPC-producing carbapenem-resistant *K. pneumoniae* ST258 clone.

A second molecular event, generated by replacement of the ST258 clade II *cps* region with the corresponding region from ST42, subsequently created the equally prevalent ST258 clade I clone (9). Both clades I and II ST258 strains have shown the ability to host diverse KPC plasmids, which might in part contribute to the spread of global ST258 strains. In contrast, the China ST258 strains appear to have evolved separately, recently acquiring the *bla*_{NDM-5}–harboring plasmid (Figure 2, panel B), highlighting the continuing evolution of *K. pneumoniae* ST258 strains.

Conclusions

We report the genotype of an NDM-5–producing *K. pneumoniae* ST258 strain isolated in southwest China. The *bla*_{NDM-5} gene was likely acquired by a carbapenem-susceptible ST258 strain from an NDM-5–producing *E. coli* strain in vivo in the same patient as a result of horizontal transfer of a *bla*_{NDM-5}–harboring IncX3 plasmid. Genomic comparison of the ST258 strain from China with other carbapenem-resistant *Klebsiella pneumoniae* ST258 strains indicated that they both evolved from a common ancestral strain but with distinct genetic characteristics suggestive of separate evolutionary histories. Further genomic comparisons between ST258 strains from China and their global ST258

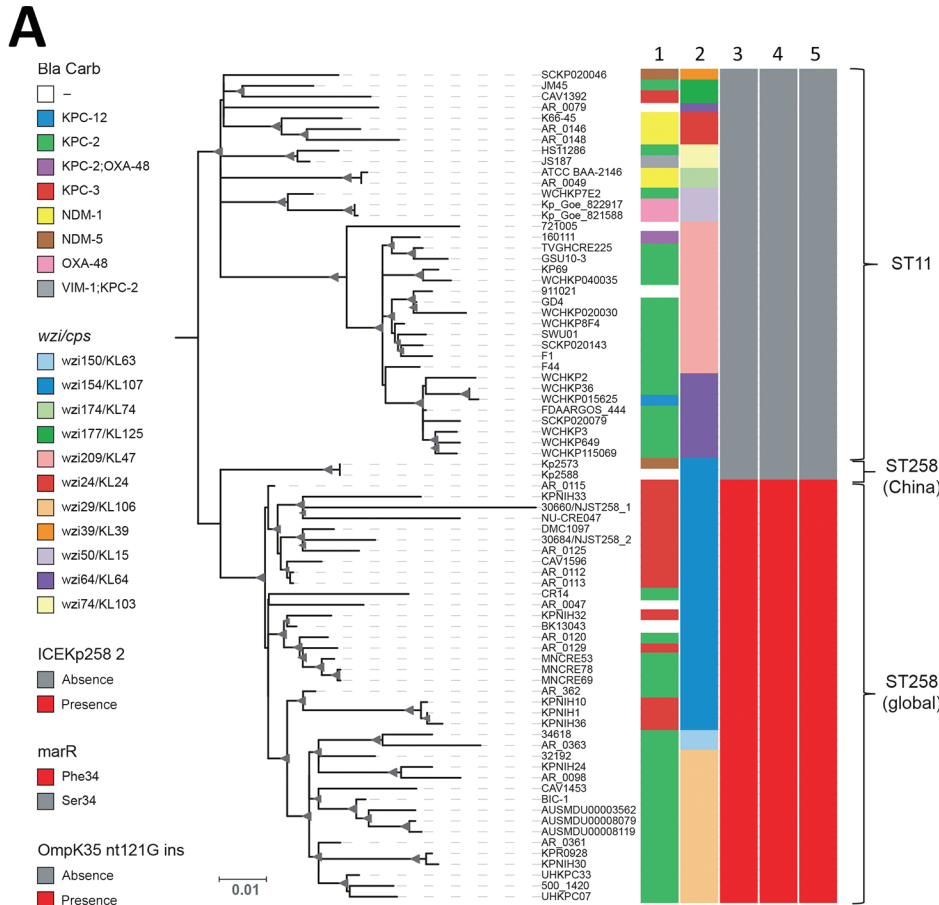
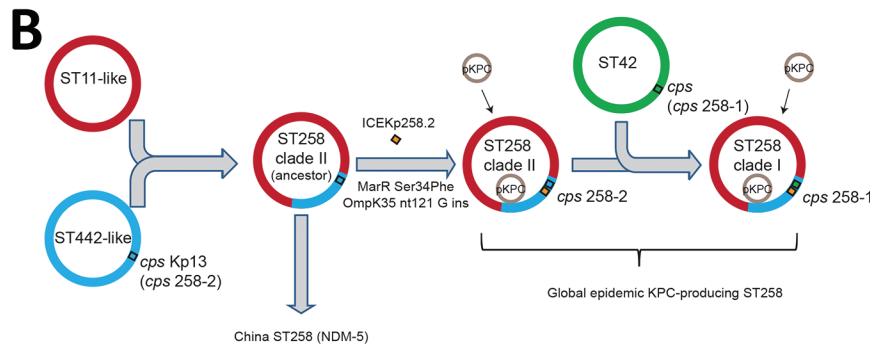


Figure 2. Phylogenetic analysis of KPC-producing and NDM-5-producing CG258 *Klebsiella pneumoniae* strains from China, 2017, and reference strains. A) Core SNP phylogenetic analysis of 76 global CG258 (ST258 and ST11) and 2 ST258 strains from China. Lane 1, Bla_carb; lane 2, *wzi* (cps); lane 3, integrative and conjugative element Kp258.2; lane 4, *marR*; lane 5, *ompK35* gene (guanine insertion at nt position 121). The maximum-likelihood tree was rooted by using ST11 strains. Bootstrap values >90% are indicated as gray triangles at branch points. Sizes are proportion to values. Scale bar indicates nucleotide substitutions per site. B) Updated hypothesis of the molecular evolution of carbapenem-resistant *K. pneumoniae* ST258 (9). Bla, β -lactamase; Carb, carbapenemase; *cps*, capsular polysaccharide gene; ICE, integrative and conjugative element; ins, insertion; KPC, *Klebsiella pneumoniae* carbapenemase; MarR, transcriptional regulator protein of the multiple antimicrobial drug resistance repressor family; NDM, New Delhi metallo- β -lactamase; *ompK35*, outer membrane protein K35; OXA, oxacillinase; pKPC, plasmid carrying KPC; ST, sequence type; VIM-1, Verona integron-encoded metallo- β -lactamase 1; *wzi*, surface assembly of capsule gene.



counterparts will help elucidate the molecular mechanisms underscoring the spread of this high-risk clone.

This study was supported by the National Natural Science Foundation of China (81572032); the Six Talent Peaks Project in Jiangsu Province (2016-WSN-112); the Key Research and Development Project of Jiangsu Provincial Science and Technology Department (BE2017654); Gusu Key Health Talent of Suzhou; the Jiangsu Youth Medical Talents Program (QN-866, 867); the Science and Technology Program of Suzhou (SZS201715 and SYS201619); and the National Institutes of Health (R01AI090155, R21AI117338, and P30CA008748).

About the Author

Dr. Xin Zhang is a clinical microbiologist at the Sichuan Academy of Medical Science, Sichuan, China. Her research interests include the clinical epidemiology of antimicrobial drug resistance and infectious disease.

References

- Wyres KL, Holt KE. *Klebsiella pneumoniae* population genomics and antimicrobial-resistant clones. Trends Microbiol. 2016;24: 944–56. <http://dx.doi.org/10.1016/j.tim.2016.09.007>
- Patel G, Bonomo RA. “Stormy waters ahead”: global emergence of carbapenemases. Front Microbiol. 2013;4:48. <http://dx.doi.org/10.3389/fmicb.2013.00048>

3. Chen L, Mathema B, Chavda KD, DeLeo FR, Bonomo RA, Kreiswirth BN. Carbapenemase-producing *Klebsiella pneumoniae*: molecular and genetic decoding. *Trends Microbiol.* 2014; 22:686–96. <http://dx.doi.org/10.1016/j.tim.2014.09.003>
4. Zhang R, Liu L, Zhou H, Chan EW, Li J, Fang Y, et al. Nationwide surveillance of clinical carbapenem-resistant *Enterobacteriaceae* (CRE) strains in China. *EBioMedicine.* 2017;19:98–106. <http://dx.doi.org/10.1016/j.ebiom.2017.04.032>
5. Lascols C, Peirano G, Hackel M, Laupland KB, Pitout JD. Surveillance and molecular epidemiology of *Klebsiella pneumoniae* isolates that produce carbapenemases: first report of OXA-48-like enzymes in North America. *Antimicrob Agents Chemother.* 2013;57:130–6. <http://dx.doi.org/10.1128/AAC.01686-12>
6. Navon-Venezia S, Kondratyeva K, Carattoli A. *Klebsiella pneumoniae*: a major worldwide source and shuttle for antibiotic resistance. *FEMS Microbiol Rev.* 2017;41:252–75. <http://dx.doi.org/10.1093/femsre/fux013>
7. Mathers AJ, Peirano G, Pitout JD. The role of epidemic resistance plasmids and international high-risk clones in the spread of multidrug-resistant *Enterobacteriaceae*. *Clin Microbiol Rev.* 2015;28:565–91. <http://dx.doi.org/10.1128/CMR.00116-14>
8. Pitout JD, Nordmann P, Poirel L. Carbapenemase-producing *Klebsiella pneumoniae*, a key pathogen set for global nosocomial dominance. *Antimicrob Agents Chemother.* 2015;59:5873–84. <http://dx.doi.org/10.1128/AAC.01019-15>
9. Chen L, Mathema B, Pitout JD, DeLeo FR, Kreiswirth BN. Epidemic *Klebsiella pneumoniae* ST258 is a hybrid strain. *MBio.* 2014;5:e01355–14. <http://dx.doi.org/10.1128/mBio.01355-14>
10. Bowers JR, Kitchel B, Driebe EM, MacCannell DR, Roe C, Lemmer D, et al. Genomic analysis of the emergence and rapid global dissemination of the clonal group 258 *Klebsiella pneumoniae* pandemic. *PLoS One.* 2015;10:e0133727. <http://dx.doi.org/10.1371/journal.pone.0133727>

Address for correspondence: Hong Du, Department of Clinical Laboratory, the Second Affiliated Hospital of Soochow University, 1055 Sanxiang Rd, Suzhou, Jiangsu, 215004, China; email: hong_du@126.com

The Public Health Image Library (PHIL)



The Public Health Image Library (PHIL), Centers for Disease Control and Prevention, contains thousands of public health–related images, including high-resolution (print quality) photographs, illustrations, and videos.

PHIL collections illustrate current events and articles, supply visual content for health promotion brochures, document the effects of disease, and enhance instructional media.

PHIL images, accessible to PC and Macintosh users, are in the public domain and available without charge.

Visit PHIL at:
<http://phil.cdc.gov/phil>

New Delhi Metallo- β -Lactamase 5– Producing *Klebsiella pneumoniae* Sequence Type 258, Southwest China, 2017

Appendix

Case Description

In June 2017, a man in his middle 70s was given a diagnosis of bladder cancer. He underwent laparoscopic radical cystectomy and ileal neobladder reconstruction according to the da Vinci Surgical System (<https://www.davincisurgery.com>) in a large tertiary care hospital in Chengdu, southwest China. The patient had no history of travel during the past 10 years outside the province where he lived. However, he reported previous hospitalizations in numerous local healthcare centers.

One week after the surgery, the patient had diarrhea, nausea, and vomiting, and a subsequent stool sample positive for *Clostridioides difficile* toxin A/B, which was suggestive of a *C. difficile* infection. After he was given vancomycin and metronidazole for 9 days, the assay result was negative for *C. difficile* toxin A/B. However, bacteremia developed in the patient, and an extended-spectrum- β -lactamase phenotype *Klebsiella pneumoniae* (Kp2588) was isolated from a blood culture. The patient was then given piperacillin/tazobactam and moxifloxacin. Two days later, a carbapenem-resistant *Escherichia coli* (Ec2551) was recovered from a urine culture, although no major urinary tract symptoms were observed. One week later, the patient had symptoms of a severe urinary tract infection and a high fever (41°C). Subsequently, a carbapenemase-resistant *K. pneumoniae* strain (Kp2573) was recovered from a urine culture. His drug regimen was then changed to tigecycline and later with a combination of fosfomycin and amikacin.

Two weeks later, the carbapenemase-resistant *K. pneumoniae* appeared to have been cleared from the urinary tract. However, pneumonia developed, and extended-spectrum- β -

lactamase-positive *K. pneumoniae*, *Acinetobacter baumannii*, methicillin-resistant *Staphylococcus aureus*, and *Candida albicans* were isolated from multiple respiratory tract samples. He also had a high fever. One month later, the health of the patient condition continued to deteriorate. The patient then refused further treatment and requested to be discharged.

Whole-Genome Sequence Analysis

We sequenced 3 isolates by using the Hiseq platform (Illumina, <https://www.illumina.com>), which produced an average of 9.7 million (range 4.7 million–12.7 million) paired end reads of 150 bp in forward and reverse directions with a predicted minimum coverage of 200×. Illumina raw reads from whole-genome sequencing were trimmed by using Trimmomatic version 0.36 (1), followed by de novo assembly using SPAdes version 3.11.1 (2). We determined the multilocus sequence type in silico (<https://github.com/tseemann/mlst>) and identified acquired drug resistance genes and plasmid replicons by using Abricate (<https://github.com/tseemann/abricate>) and ARIBA (3) on the basis of the ResFinder (4) and PlasmidFinder (5) databases. For *bla*_{NDM-5}–harboring plasmid sequencing, we extracted plasmid DNA from *E. coli* J53 transconjugants and sequenced them by using the Illumina Hiseq system. We de novo assembled sequencing reads by using SPAdes version 3.11.1 (2). We closed gaps between contigs by using a PCR, followed by standard Sanger sequencing.

The genomes sequenced in this study (Kp2573 and Kp2588) were compared with genomes deposited in the National Center for Biotechnology Information assembly database (<https://www.ncbi.nlm.nih.gov/assembly>). All genomes were mapped to the *K. pneumoniae* reference genome NJST258_2 (GenBank accession no. CP006918) by using Snippy (<https://github.com/tseemann/snippy>). Prophages were predicted by using PHASTER (6), repeated region were examined by using MUMmer (7), and putative regions of recombination were predicted by using Gubbins (8), followed by filter-using vcftools (9). A recombination-free single-nucleotide polymorphism (SNP) phylogenetic tree was generated by using RAxML version 8.2.4 (<https://cme.h-its.org/exelixis/web/software/raxml/>) and a general time reversible model of nucleotide substitution with a Gamma model of rate heterogeneity and 4 rate categories (10). SNPs were annotated by using SnpEff 4.3 (11). Phylogenetic clades were identified by using hierarchical Bayesian analysis of population structure. The phylogenetic tree was annotated by using iTOL (12).

A different core SNPs phylogenetic analysis of Kp2573/Kp2588 and 824 ST258 genomes (including completely closed and draft assemblies) from the National Center for Biotechnology Information (<https://www.ncbi.nih.gov>) showed similar results because Kp2573/Kp2588 is distinct from global ST258 strains. However, Kp2573 and Kp2588 have the same ancestor, suggesting that Kp2573/Kp2588 carry some unique genetic characteristics in comparison with other global ST258 strains.

Nucleotide Sequence Accession Numbers

Draft genome assemblies and raw reads from our study were deposited in GenBank Bioproject No. PRJNA354234. The draft genome sequences of the 3 strains isolated in this study were deposited in the GenBank whole-genome shotgun database under accession nos, RXHE00000000, RXHG00000000, RXHF00000000, respectively. The raw reads were deposited in sequence read archive database under biosample accession nos. SAMN10583475, SAMN10583476, and SAMN10583477, respectively.

References

1. Bolger AM, Lohse M, Usadel B. Trimmomatic: a flexible trimmer for Illumina sequence data. *Bioinformatics*. 2014;30:2114–20. [PubMed](https://pubmed.ncbi.nlm.nih.gov/24568653/) <http://dx.doi.org/10.1093/bioinformatics/btu170>
2. Bankevich A, Nurk S, Antipov D, Gurevich AA, Dvorkin M, Kulikov AS, et al. SPAdes: a new genome assembly algorithm and its applications to single-cell sequencing. *J Comput Biol*. 2012;19:455–77. [PubMed](https://pubmed.ncbi.nlm.nih.gov/22612321/) <http://dx.doi.org/10.1089/cmb.2012.0021>
3. Hunt M, Mather AE, Sánchez-Busó L, Page AJ, Parkhill J, Keane JA, et al. ARIBA: rapid antimicrobial resistance genotyping directly from sequencing reads. *Microb Genom*. 2017;3:e000131. [PubMed](https://pubmed.ncbi.nlm.nih.gov/28111111/) <http://dx.doi.org/10.1099/mgen.0.000131>
4. Zankari E, Hasman H, Cosentino S, Vestergaard M, Rasmussen S, Lund O, et al. Identification of acquired antimicrobial resistance genes. *J Antimicrob Chemother*. 2012;67:2640–4. [PubMed](https://pubmed.ncbi.nlm.nih.gov/22612321/) <http://dx.doi.org/10.1093/jac/dks261>
5. Carattoli A, Zankari E, García-Fernández A, Voldby Larsen M, Lund O, Villa L, et al. In silico detection and typing of plasmids using PlasmidFinder and plasmid multilocus sequence typing. *Antimicrob Agents Chemother*. 2014;58:3895–903. [PubMed](https://pubmed.ncbi.nlm.nih.gov/24568653/) <http://dx.doi.org/10.1128/AAC.02412-14>

6. Arndt D, Grant JR, Marcu A, Sajed T, Pon A, Liang Y, et al. PHASTER: a better, faster version of the PHAST phage search tool. *Nucleic Acids Res.* 2016;44:W16-21. [PubMed](#)
<http://dx.doi.org/10.1093/nar/gkw387>
7. Kurtz S, Phillippy A, Delcher AL, Smoot M, Shumway M, Antonescu C, et al. Versatile and open software for comparing large genomes. *Genome Biol.* 2004;5:R12. [PubMed](#)
<http://dx.doi.org/10.1186/gb-2004-5-2-r12>
8. Croucher NJ, Page AJ, Connor TR, Delaney AJ, Keane JA, Bentley SD, et al. Rapid phylogenetic analysis of large samples of recombinant bacterial whole genome sequences using Gubbins. *Nucleic Acids Res.* 2015;43:e15. [PubMed](#) <http://dx.doi.org/10.1093/nar/gku1196>
9. Danecek P, Auton A, Abecasis G, Albers CA, Banks E, DePristo MA, et al.; 1,000 Genomes Project Analysis Group. The variant call format and VCFtools. *Bioinformatics.* 2011;27:2156–8. [PubMed](#) <http://dx.doi.org/10.1093/bioinformatics/btr330>
10. Stamatakis A. RAxML version 8: a tool for phylogenetic analysis and post-analysis of large phylogenies. *Bioinformatics.* 2014;30:1312–3. [PubMed](#)
<http://dx.doi.org/10.1093/bioinformatics/btu033>
11. Cingolani P, Platts A, Wang L, Coon M, Nguyen T, Wang L, et al. A program for annotating and predicting the effects of single nucleotide polymorphisms, SnpEff: SNPs in the genome of *Drosophila melanogaster* strain w1118; iso-2; iso-3. *Fly (Austin).* 2012;6:80–92. [PubMed](#)
<http://dx.doi.org/10.4161/fly.19695>
12. Letunic I, Bork P. Interactive tree of life (iTOL) v3: an online tool for the display and annotation of phylogenetic and other trees. *Nucleic Acids Res.* 2016;44:W242-5. [PubMed](#)
<http://dx.doi.org/10.1093/nar/gkw290>