

# Genomic Epidemiology of Global Carbapenemase-Producing *Enterobacter* spp., 2008–2014

Gisele Peirano,<sup>1</sup> Yasufumi Matsumura,<sup>1</sup> Mark D. Adams,<sup>2</sup> Patricia Bradford, Mary Motyl, Liang Chen, Barry N. Kreiswirth, Johann D.D. Pitout

We performed whole-genome sequencing on 170 clinical carbapenemase-producing *Enterobacter* spp. isolates collected globally during 2008–2014. The most common carbapenemase was VIM, followed by New Delhi metallo- $\beta$ -lactamase (NDM), *Klebsiella pneumoniae* carbapenemase, oxacillin 48, and IMP. The isolates were of predominantly 2 species (*E. xiangfangensis* and *E. hormaechei* subsp. *steigerwaltii*) and 4 global clones (sequence type [ST] 114, ST93, ST90, and ST78) with different clades within ST114 and ST90. Particular genetic structures surrounding carbapenemase genes were circulating locally in various institutions within the same or between different STs in Greece, Guatemala, Italy, Spain, Serbia, and Vietnam. We found a common NDM genetic structure (NDM-GE-U.S.), previously described on pNDM-U.S. from *Klebsiella pneumoniae* ATCC BAA-214, in 14 different clones obtained from 6 countries spanning 4 continents. Our study highlights the importance of surveillance programs using whole-genome sequencing in providing insight into the molecular epidemiology of carbapenemase-producing *Enterobacter* spp.

The emergence of carbapenem resistance is a major public health concern because these agents are regarded as one of the last effective therapies available for treating serious infections caused by *Enterobacteriaceae* (1). Carbapenemases are important causes of carbapenem resistance because they can be transferred between members of the *Enterobacteriaceae*. The most common carbapenemases among clinical *Enterobacteriaceae* are the *Klebsiella pneumoniae* carbapenemases (KPCs) (Amber class A), IMPs, VIMs, New Delhi metallo- $\beta$ -lactamase (NDMs) (class B or metallo- $\beta$ -lactamases), and oxacillin (OXA) 48-like (class D) enzymes (2).

Author affiliations: University of Calgary, Calgary, Alberta, Canada (G. Peirano, J.D.D. Pitout); Kyoto University Graduate School of Medicine, Kyoto, Japan (Y. Matsumura); J. Craig Venter Institute, La Jolla, California, USA (M.D. Adams); AstraZeneca Pharmaceuticals LP, Waltham, Massachusetts, USA (P. Bradford); Merck & Co., Inc., Rahway, New Jersey, USA (M. Motyl); Rutgers University, Newark, New Jersey, USA (L. Chen, B.N. Kreiswirth); University of Pretoria, Pretoria, South Africa (J.D.D. Pitout)

DOI: <https://doi.org/10.3201/eid2406.171648>

Recent surveillance studies have shown that *Enterobacter* spp. are often the second or third most common *Enterobacteriaceae* species associated with carbapenemases (3,4). Typically, KPCs are common among *Enterobacter* spp. from the United States and South America (5). VIMs are often limited to Europe, NDMs to the Indian subcontinent, and OXA-48 to North Africa and the Middle East (5).

Comprehensive global data regarding the different *Enterobacter* species and molecular epidemiology are currently limited. We designed a study that used short-read whole-genome sequencing to describe the molecular characteristics and international distribution of *Enterobacter* spp. with different carbapenemases (n = 170) obtained from 2 global surveillance systems during 2008–2014.

## Materials and Methods

### Bacterial Isolates

We included 170 clinical, nonrepeat *Enterobacter* spp. collected from 2 global surveillance programs, namely the Merck Study for Monitoring Antimicrobial Resistance Trends (SMART) (2008–2014) and the AstraZeneca global surveillance program (2012–2014), presently known as the INFORM Global Surveillance Study of Antimicrobial Resistance (online Technical Appendix 1 Table 1, <https://wwwnc.cdc.gov/EID/article/24/6/17-1648-Techapp1.xlsx>; online Technical Appendix 2, <https://wwwnc.cdc.gov/EID/article/24/6/17-1648-Techapp2.pdf>). The isolates initially underwent phenotypic identification and microdilution panel susceptibility testing, and all carbapenem-nonsusceptible isolates underwent molecular screening for *bla*<sub>KPC</sub>, *bla*<sub>VIM</sub>, *bla*<sub>NDM</sub>, *bla*<sub>OXA-48</sub>-like, *bla*<sub>IMP</sub>, and *bla*<sub>GES</sub> as described previously (6). We obtained a total of 142,226 *Enterobacteriaceae* from the period 2008–2014, and 6,457 (4.5%) were identified as *Enterobacter* spp.; 682 were nonsusceptible to 1 of the carbapenems, and 170/6,457 (2.6%) were positive for *bla*<sub>KPC</sub>, *bla*<sub>OXA-48</sub>-like, *bla*<sub>NDM</sub>, *bla*<sub>VIM</sub>, and *bla*<sub>IMP</sub> and thus included in our study.

<sup>1</sup>These authors contributed equally to this article.

<sup>2</sup>Current affiliation: Jackson Laboratory for Genomic Medicine, Farmington, Connecticut, USA.

### Whole-Genome Sequencing

We used the Nextera XT DNA sample preparation kit (Illumina, San Diego, CA, USA) to prepare libraries for sequencing. We multiplexed and sequenced samples on an Illumina NextSeq500 for 300 cycles (151 bp paired-end).

### Genomic Analysis

We obtained draft genomes by using SPAdes version 3.10.1 (7). We identified species based on the *hsp60* gene sequences (8). We created whole-genome phylogenetic trees, including reference strains for identification of *E. cloacae* complex (9; online Technical Appendix 1 Table 2).

To define the presence of genes and their alleles, we accessed BLAST in combination with the following databases or typing schemes: BLAST (<http://blast.ncbi.nlm.nih.gov/Blast>), National Center for Biotechnology Information (NCBI) Beta-Lactamase Data Resources (<http://www.ncbi.nlm.nih.gov/pathogens/beta-lactamase-data-resources>), ResFinder (10), PlasmidFinder (11), and *Enterobacter cloacae* Multilocus Sequence Typing (MLST) Databases (<http://pubmlst.org/ecloacae>). We classified integrons according to INTEGRALL (<http://integrall.bio.ua.pt>).

### Phylogenetic Analysis

We created a recombination-free, core single-nucleotide polymorphism (SNP)-based phylogenetic tree and identified SNPs by mapping the reads or aligning the genomes against *E. xiangfangensis* type strain LMG27195 (9) using the RedDog pipeline (<https://github.com/katholt/RedDog>). We removed recombination sites according to Gubbins (12) and removed prophages identified by PHAST (13). We included core SNPs and sites that were present in all genomes to create a maximum-likelihood tree using RAxML with the general time-reversible plus gamma substitution model (14). We visualized the tree by using iTOL version 3 (15).

To identify clades within certain sequence types (STs), we used a phylogeny-free population genetics approach of core SNPs, conducting hierarchical clustering analysis with the Bayesian Analysis of Population Structure program (16). We included all 1,048 available *Enterobacter* spp. genomes in the NCBI Reference Sequence Database (<http://www.ncbi.nlm.nih.gov/refseq>) as of June 20, 2017. An in silico MLST analysis identified 282 STs from 950 typeable genomes. We included a total of 201 genomes of STs 78, 90, 93, 105, 108, 114, and 171 for the clustering analysis (online Technical Appendix 1 Table 3). For each *E. hormaechei* subspecies or *E. xiangfangensis*, the hierarchical Bayesian Analysis of Population Structure clustering analysis (16) was conducted with 3 nested levels with a priori upper bound of the number of clusters between one fourth to one half of the total number of isolates. We defined clades by using the second level of clustering.

### Sequence Data Accession Numbers

We deposited the sequencing data in the DNA Data Bank of Japan and NCBI (NCBI BioProjects PRJNA259658 and PRJNA398291) databases (accession nos. DRA004879, SRP046977, and SRR2960053–SRR2960159 [SMART isolates] and SRR5939895–SRR5939952 [AstraZeneca isolates]). The sequences of new integrons or genetic environments described in this study were GenBank accession nos. LC224310–2, MF288916–351991, and MF327263–71.

## Results

### Global Distribution of Carbapenemases among *Enterobacter* spp.

We included a total of 170 carbapenemase-producing *Enterobacter* strains in the study. The VIMs (VIM-1, 4, 5, 23, and 31;  $n = 51$  [46 were only positive for VIM, and 5 co-produced OXA-48]) were the most common carbapenemase among this collection, followed by NDMs (NDM-1, 6, and 7;  $n = 43$  [41 were positive only for NDM, 1 also co-produced OXA-48, and 1 co-produced KPC-2]); KPCs (KPC-2, 3, 4, and 5;  $n = 38$  [37 were only positive for KPC, and 1 co-produced NDM]); OXA-48 ( $n = 31$  [25 were only positive for OXA-48, 5 co-produced VIM, and 1 co-produced NDM]); and IMPs (IMP-1, 4, 8, 13, and 14;  $n = 14$ ). *Enterobacter* spp. with *bla*<sub>VIM</sub> were mostly limited to Europe; isolates with *bla*<sub>NDM</sub> were present predominantly in the Balkans, India, and Vietnam; isolates with *bla*<sub>KPC</sub> were mainly found in the United States and South America; isolates with *bla*<sub>OXA-48</sub> were largely present in North Africa and the Middle East; and isolates with *bla*<sub>IMP</sub> occurred mostly in the Philippines, Taiwan, and Australia. The global distribution of isolates from this study was similar to what had previously been reported for other members of *Enterobacteriaceae*, especially *Klebsiella* spp. with carbapenemases (5,17).

### *E. aerogenes* Distant from *E. cloacae* Complex

We identified 10 isolates as *E. aerogenes*. These results are described in online Technical Appendix 2.

### *E. xiangfangensis* Identified as the Most Common Species

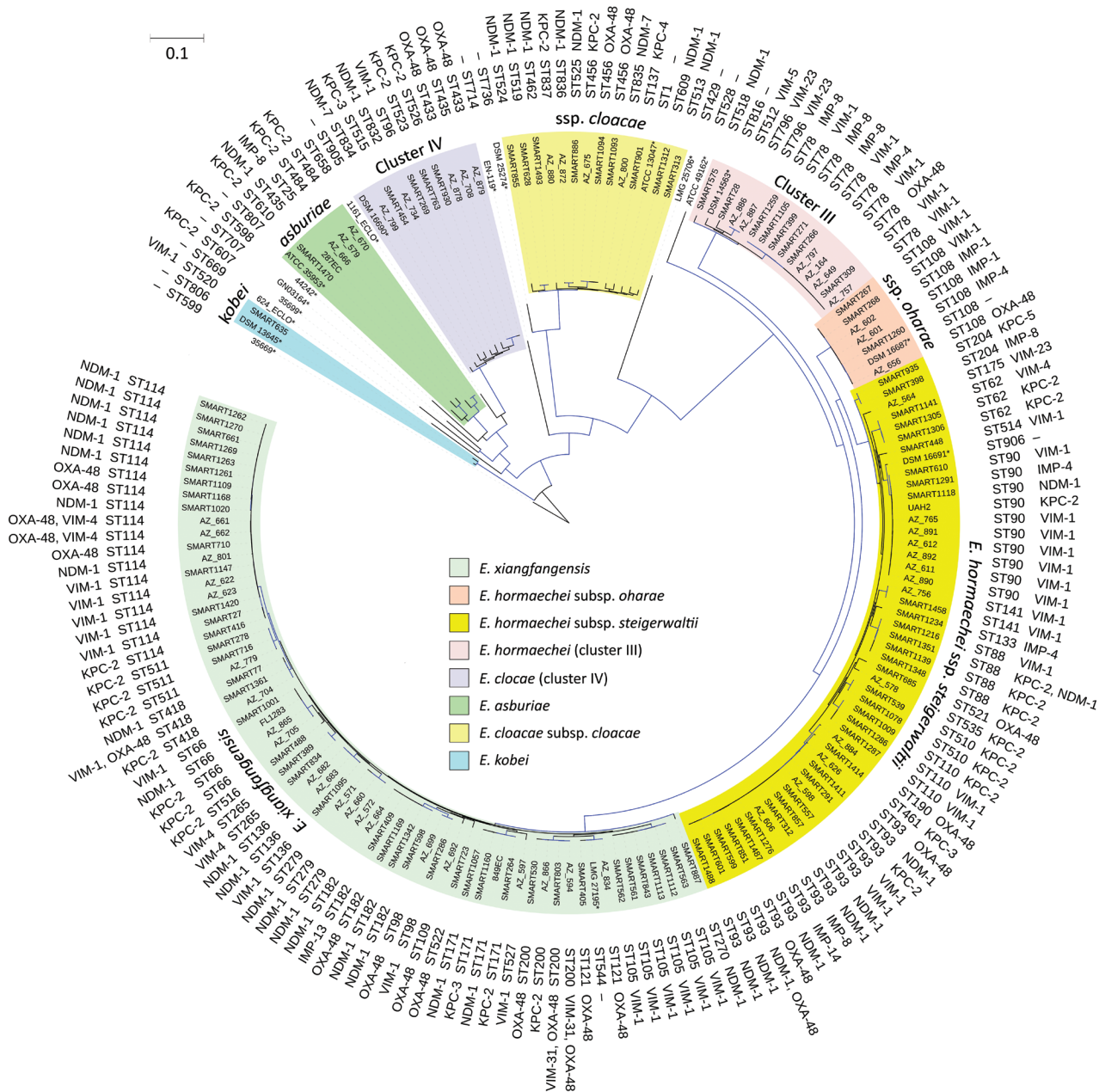
The *E. cloacae* complex ( $n = 160$ ) from our study was obtained from intraabdominal ( $n = 69$ ), urine ( $n = 56$ ), skin and soft tissue ( $n = 19$ ), blood ( $n = 2$ ), and respiratory specimens ( $n = 14$ ). We identified 8 species among *E. cloacae* complex (*E. xiangfangensis* [ $n = 65$ ], *E. hormaechei* subsp. *steigerwaltii* [ $n = 47$ ], *E. cloacae* cluster III [ $n = 14$ ], *E. cloacae* subsp. *cloacae* [ $n = 13$ ], *E. cloacae* cluster IV [ $n = 9$ ], *E. hormaechei* subsp. *oharae* [ $n = 6$ ], *Enterobacter asburiae* [ $n = 5$ ], and *Enterobacter kobei* [ $n = 1$ ]). These species

were associated with different types of carbapenemases and showed global distribution (Figure 1; online Technical Appendix 2 Table 1). *E. xiangfangensis* was frequent in the Balkans (e.g., Croatia, Romania, and Serbia), whereas *E. hormaechei* subsp. *steigerwaltii* was mostly prevalent in Greece and Vietnam (online Technical Appendix 2 Table 1). This overrepresentation was attributable to the presence

of particular STs among these species (online Technical Appendix 2 Table 2).

**Dominant Sequence Types Identified among 4 Species in *E. cloacae* Complex**

*E. xiangfangensis* from our study comprised 18 different STs, including 1 dominant ST, ST114 (19/65; 29%).



**Figure 1.** Phylogenetic tree of the different species and sequence types among 160 *Enterobacter cloacae* complex isolates identified from *Enterobacter* spp. isolates collected in the Merck Study for Monitoring Antimicrobial Resistance Trends, 2008–2014, and the AstraZeneca global surveillance program, 2012–2014. The tree is rooted with *E. cloacae* complex Hoffmann cluster IX (Chavda group R) strain 35,699. A total of 369,123 core single-nucleotide polymorphisms were found; 4,010 were used to draw the tree (after phages and recombination sites were excluded). KPC, *Klebsiella pneumoniae* carbapenemase; NDM, New Delhi metallo-β-lactamase; OXA, oxacillin; ST, sequence type; –, information missing; \*, isolate identified in another study. Scale bar indicates nucleotide substitutions per site.



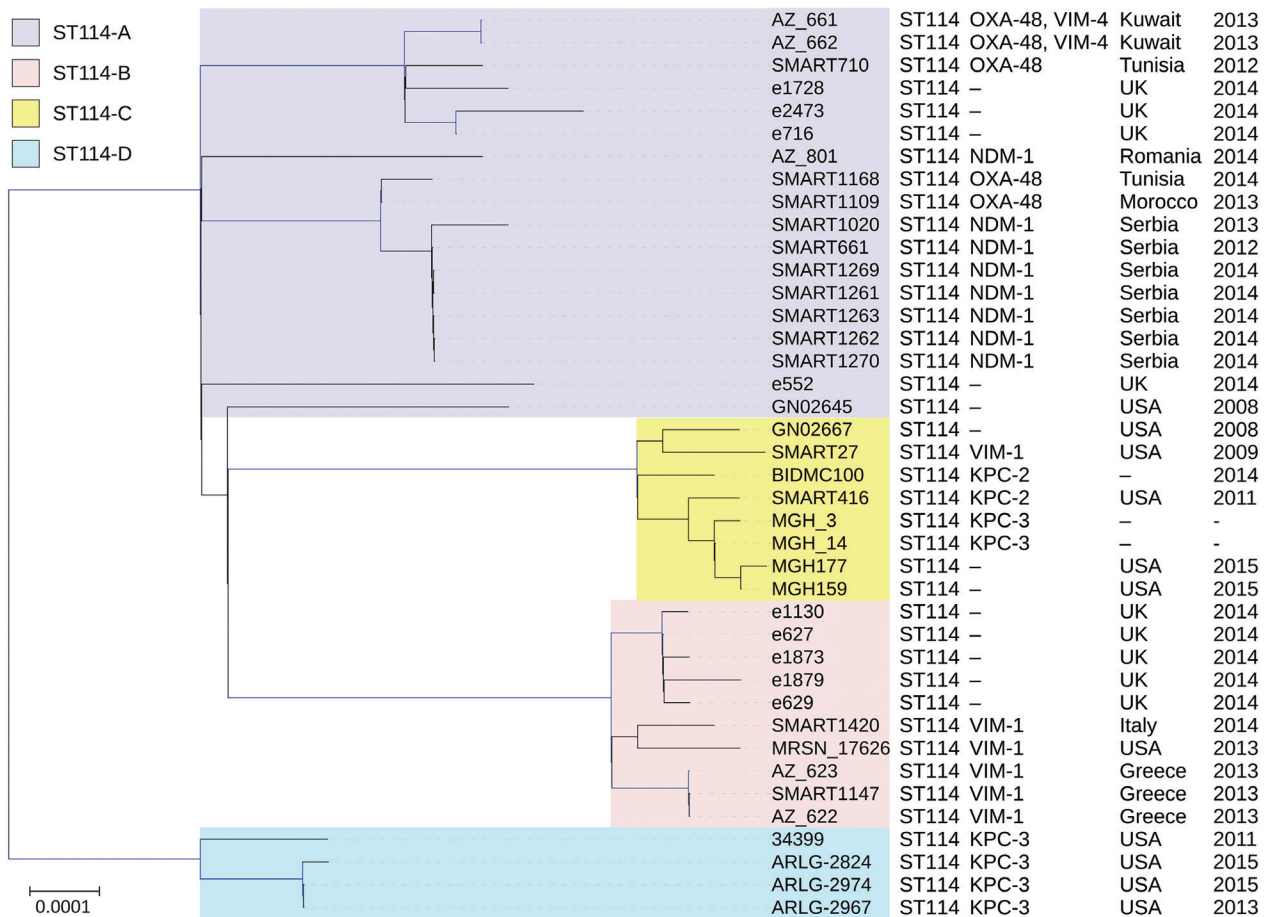
*E. hormaechei* subsp. *steigerwaltii* comprised 15 different STs, including 2 dominant STs, ST90 (10/47; 21%) and ST93 (14/47; 30%). *E. cloacae* cluster III comprised 4 different STs, including 1 dominant ST, ST78 (10/14 [71%]). All 6 of the *E. hormaechei* subsp. *oharae* isolates belonged to ST108 (Figure 1). The remaining species did not contain a dominant ST, and we found new STs among *E. cloacae* cluster IV (ST832 and ST834) and *E. cloacae* subsp. *cloacae* (ST835, ST836, and ST837).

### Major and Minor Sequence Types among *Enterobacter cloacae* Complex

Among the *E. cloacae* complex, we identified 4 major STs ( $\geq 10$  isolates/ST), ST114, ST93, ST90, and ST78. We also identified 2 minor STs (5–9 isolates/ST), ST105 and ST108.

ST114 ( $n = 19$ ) from *E. xiangfangensis* was the most common ST and divided into 4 clades. Isolates representing

3 of the clades (ST114A, ST114B, and ST114C) were from this study, and isolates representing clade ST114D were from a different study (9; Figure 2; online Technical Appendix 2 Table 2). ST114 had a global distribution (Greece, Italy, Kuwait, Morocco, Romania, Serbia, Tunisia, and the United States) and was associated with different carbapenemases (VIM-1, VIM-4+OXA-48, NDM-1, KPC-2, and OXA-48) (online Technical Appendix 2 Table 2). The largest clade (ST114A [ $n = 13$ ]) was present in Serbia, Romania (with  $bla_{NDM-1}$ ), Tunisia, Morocco, and Kuwait (with  $bla_{OXA-48}$ ) (online Technical Appendix Table 2). Clade ST114B ( $n = 4$ ) with  $bla_{VIM-1}$  was obtained from Greece and Italy, and clade ST114C ( $n = 2$ ; 1 with  $bla_{VIM-1}$  and 1 with  $bla_{KPC-2}$ ) was found in the United States. ST114 is a common global human *Enterobacter* clone (18) and is also present in companion animals (19). This international clone is associated with various antimicrobial resistance



**Figure 2.** Phylogenetic tree of the different clades among 40 *Enterobacter xiangfangensis* ST14 isolates identified from *Enterobacter* spp. isolates collected in the Merck Study for Monitoring Antimicrobial Resistance Trends, 2008–2014, and the AstraZeneca global surveillance program, 2012–2014. The tree is rooted with *E. hormaechei* subsp. *hormaechei* isolate ATCC49162. A total of 317,867 core single-nucleotide polymorphisms were found; 27,705 were used to draw the tree (after phages and recombination sites were excluded). The isolates from other studies were negative for carbapenemases. KPC, *Klebsiella pneumoniae* carbapenemase; NDM, New Delhi metallo- $\beta$ -lactamase; OXA, oxacillin; ST, sequence type; –, information missing. Scale bar indicates nucleotide substitutions per site.

determinants (20) and was responsible for a prolonged nosocomial outbreak involving KPC-3 in the United States (21).

ST93 (n = 14), from *E. hormaechei* subsp. *steigerwaltii*, was the second most common ST in this collection and consisted of 1 clade (Figure 3; online Technical Appendix 2 Table 2). ST93 had a global distribution (Australia, Belgium, China, Romania, Spain, Thailand, United States, and Vietnam) and was associated with different carbapenemases (IMP-8, IMP-14, VIM-1, NDM-1, KPC-2, and OXA-48). ST93 was mostly present in Vietnam (n = 7), where it contained *bla*<sub>NDM-1</sub> and *bla*<sub>OXA-48</sub> (online Technical Appendix 2 Table 2).

ST90 (n = 10), from *E. hormaechei* subsp. *steigerwaltii*, and ST78 (n = 10), from *E. cloacae* cluster III, were the next most common STs in our collection. ST90 was divided into 3 clades; isolates from 2 of the clades (ST90B and ST90C) were from this collection, whereas isolates representing clade ST90A were from a different study (22; Figure 3; online Technical Appendix 2 Table 2). ST90C with *bla*<sub>VIM-1</sub> (n = 7) was from Greece, whereas clade ST90B showed an international distribution (ST90C with IMP-4 from Australia, KPC-2 from Canada, and NDM-1 from Romania).

ST78 from *E. cloacae* cluster III consisted of 1 clade. This ST was associated with VIM-1 (Greece, Italy, and Spain), IMP-4 (Philippines), IMP-8 (Taiwan), and OXA-48 (Turkey) (online Technical Appendix 2 Table 2).

The minor STs, including ST105 and ST108 (both with 6 isolates), were distinguished on the basis of their molecular epidemiology. ST105 from *E. xiangfangensis* belonged to a single clade and was only present in Croatia, where it contained *bla*<sub>VIM-1</sub>. All the *E. hormaechei* subsp. *oharae* isolates belonged to ST108, which was divided into 5 clades; isolates from 2 of the clades (ST108C and ST108D) were from this collection, whereas isolates representing the other clades were from different studies (23; Figure 4). Clade 108C (n = 4) was present in Spain with *bla*<sub>VIM-1</sub> (n = 2) and China with *bla*<sub>IMP-1</sub> (n = 2), and ST108D (n = 2) was found in Australia (with *bla*<sub>IMP-4</sub>) and Israel (with *bla*<sub>OXA-48</sub>).

### **β-lactamases, Antimicrobial Resistance Determinants, and Plasmid Analysis**

For each of the 170 isolates, we tabulated the study number, GenBank accession number, species, date, country of isolation, ST, and clade. The β-lactamases, antimicrobial resistance determinants, plasmid replicon types, and plasmid STs are shown in online Technical Appendix 1 Table 1 and online Technical Appendix 2.

### **Genetic Environments Surrounding the Carbapenemase Genes**

We were able to successfully characterize the immediate genetic environments surrounding the carbapenemase

genes in 8/14 *E. cloacae* complex with IMP, 28/33 with KPC (including 4 novel structures named KPC-GE01, KPC-GE02, KPC-GE03, and KPC-GE04), 42/42 with NDM (including 4 novel structures named NDM-GE01, NDM-GE02, NDM-GE03, and NDM-GE04), 17/27 with OXA-48 (including 4 novel structures named OXA-GE01, OXA-GE02, OXA-GE03, and OXA-GE04), and 46/51 with VIM (including the novel integrons In1372, In1373, and In1374) (online Technical Appendix 2 Table 3). We have also described the novel structures found in *E. aerogenes* (online Technical Appendix 2).

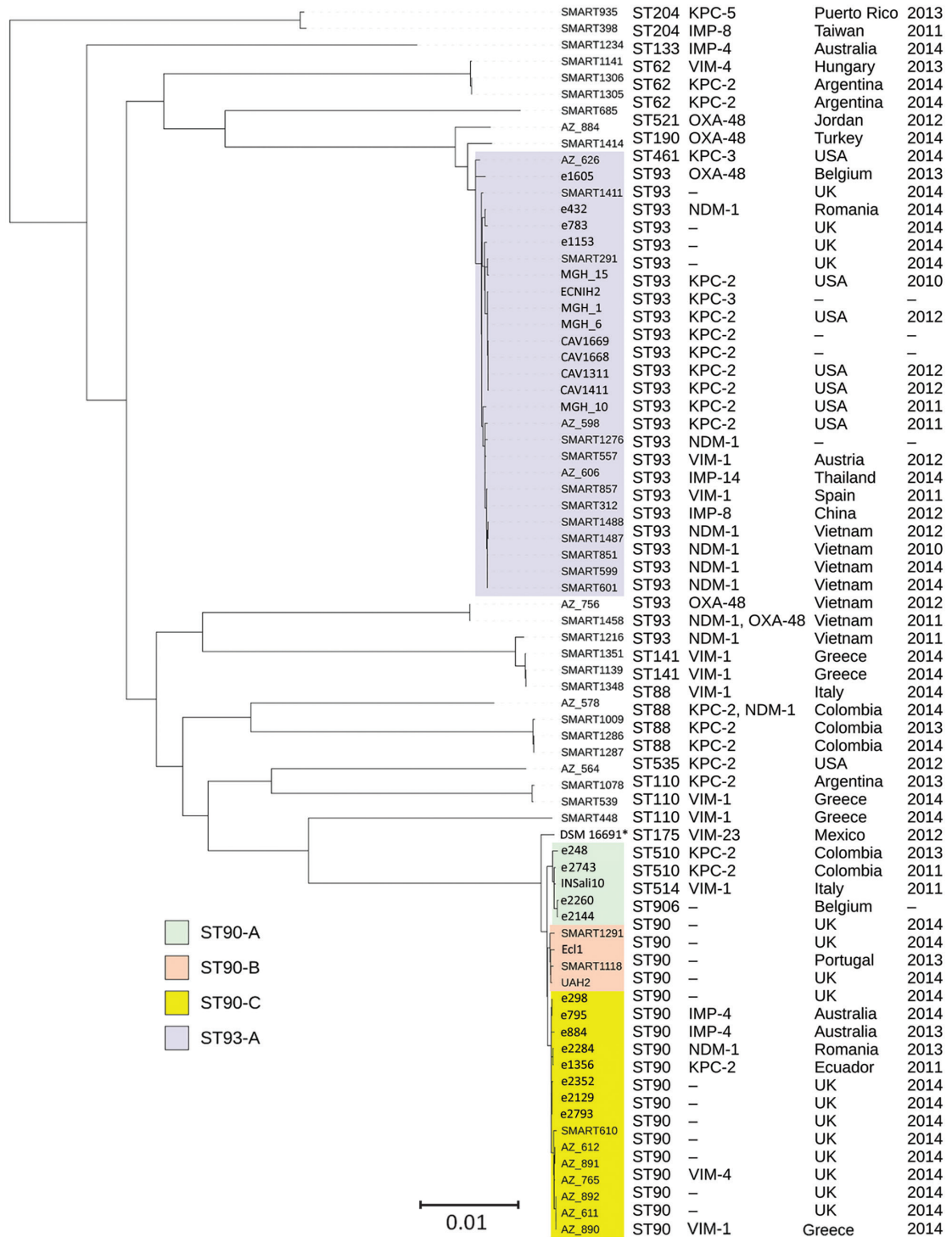
The *bla*<sub>KPC</sub> were mainly associated with the Tn4401b isoform (including the 4 novel structures), whereas *bla*<sub>OXA-48</sub> was always associated with Tn1999 (including the 4 novel structures). Isolates with NDM contained ISA-ba125 upstream and *ble*<sub>MBL</sub> downstream of the *bla*<sub>NDM</sub>, and the *bla*<sub>VIM</sub> and *bla*<sub>IMP</sub> were situated within diverse class I integrons from various countries (online Technical Appendix 2 Table 2).

### **Integrons Harboring *bla*<sub>VIM-1</sub> Circulating Locally within the Same or between Different STs in Spain, Greece, and Italy**

In237 was present in ST78 (obtained in 2013) and ST90C (obtained in 2014) from the same institution in Greece. In916 was identified in ST78 (obtained in 2010) and ST114B (obtained in 2014) from the same institution in Italy. In624 was harbored in ST78, ST96, and ST108 from the same institution in Spain (all obtained in 2010). In87 was detected in ST98, ST110, and ST141 from 2 different institutions in Greece (obtained in 2010 and 2014). In4873 was identified in ST114B from 2 different institutions in Greece (obtained in 2013) (online Technical Appendix 2 Tables 1, 2). In110 with *bla*<sub>VIM-1</sub> was present in ST105 from Croatia (obtained in 2013) and ST520 from Spain (obtained in 2012).

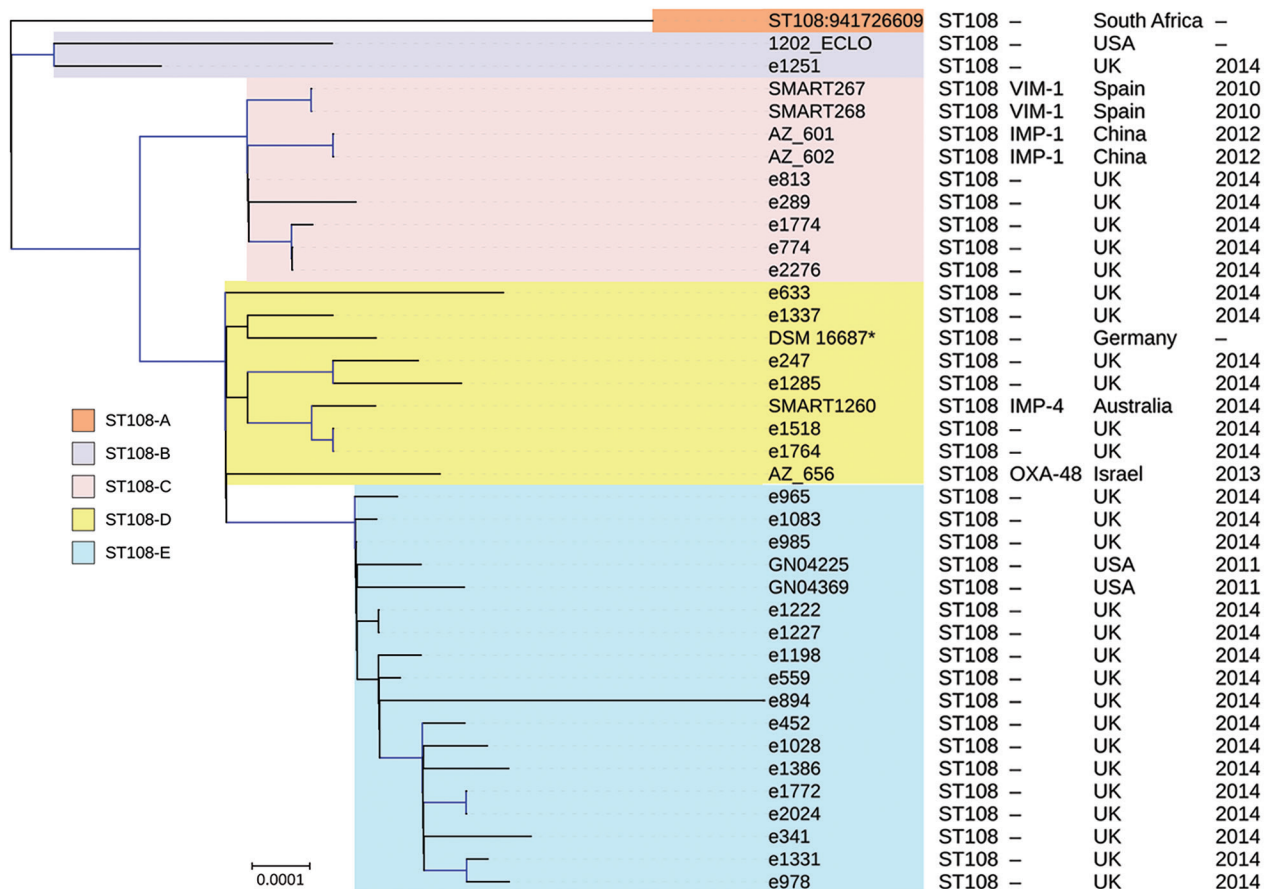
### **Global Distribution of a Common NDM-1 Genetic Structure**

The most common genetic structure immediately surrounding the *bla*<sub>NDMs</sub> (named NDM-GE-U.S.) in our collection was identical to that previously described on a 140.8 kb IncA/C plasmid (pNDM-U.S.; GenBank accession no. CP006661.1) found in *K. pneumoniae* ATCC BAA-2146 with *bla*<sub>NDM-1</sub> (24). This bacterium was isolated in 2010 from the urine of a US hospital patient who had previously received medical care in India (25). NDM-GE-U.S., a 3,063-bp fragment consisting of ΔISAba125-*bla*<sub>NDM-1</sub>-*ble*<sub>MBL</sub>-*trpF-dsbC*, was present in 16/42 of NDM *E. cloacae* complex isolates among 14 different STs (88, 90B, 93, 114A, 279, 136, 182, 270, 435, 513, 524, 525, 609, and 832) obtained from Colombia, Romania, Philippines, Vietnam, South Africa, and Kenya (online Technical Appendix 2 Table 3).



**Figure 3.** Phylogenetic tree of the different clades among 51 *Enterobacter hormaechei* subsp. *steigerwaltii* ST90 and ST93 isolates identified from *Enterobacter* spp. isolates collected in the Merck Study for Monitoring Antimicrobial Resistance Trends, 2008–2014, and the AstraZeneca global surveillance program, 2012–2014. The tree is rooted with *E. hormaechei* subsp. *hormaechei* isolate ATCC49162. A total of 317,867 core single-nucleotide polymorphisms were found; 27,705 were used to draw the tree (after phages and recombination sites were excluded). The isolates from other studies were negative for carbapenemases. Clades are grouped by color. KPC, *Klebsiella pneumoniae* carbapenemase; NDM, New Delhi metallo- $\beta$ -lactamase; OXA, oxacillin; ST, sequence type; –, information missing. Scale bar indicates nucleotide substitutions per site.





**Figure 4.** Phylogenetic tree of the different clades among 39 *Enterobacter hormaechei* subsp. *oharae* ST108 isolates identified from *Enterobacter* spp. isolates collected in the Merck Study for Monitoring Antimicrobial Resistance Trends, 2008–2014, and the AstraZeneca global surveillance program, 2012–2014. The tree was rooted with *E. hormaechei* subsp. *hormaechei* isolate ATCC49162. A total of 317,867 core single-nucleotide polymorphisms were found; 27,705 were used to draw the tree (after phages and recombination sites were excluded). The isolates from other studies were negative for carbapenemases. Clades are grouped by color. KPC, *Klebsiella pneumoniae* carbapenemase; NDM, New Delhi metallo- $\beta$ -lactamase; OXA, oxacillin; ST, sequence type; –, information missing. Scale bar indicates nucleotide substitutions per site.

We determined the sequence similarity of the isolates with NDM-GE-U.S. to previously sequenced plasmids in the GenBank database. The similarity to pNDM-U.S. ranged from 7% to 81%, suggesting that different plasmids contained NDM-GE-U.S. Twelve of the isolates showed high similarity (range 93%–100%) to pK518\_NDM1, a 106.8-kb IncFII plasmid with *bla*<sub>NDM-1</sub> from China (GenBank accession no. CP023187). The remaining 4 isolates showed high similarity (range 98%–100%) with the 54-kb IncX3 plasmid pNDM-HN380 ( $n = 3$ ) from China (26) and the 178.2-kb IncA/C plasmid p6234–178.193kb ( $n = 1$ ) from the United States (GenBank accession no. CP010391).

## Discussion

The most common carbapenemase among *Enterobacter* spp. from our study was VIM, followed by NDM, KPC, OXA-48, and IMP. Carbapenemase-producing *Enterobacter*

spp. was dominated by 2 global species, namely *E. xiangfangensis* with 1 major clone (ST114) and *E. hormaechei* subsp. *steigerwaltii* with 2 major clones (ST90 and ST93). ST114 and ST90 were divided into different clades; some of the clades (e.g., 90C and 114B) were located in certain geographic regions affiliated with specific carbapenemases, whereas other clades (114A and 90B) were distributed globally in association with different types of carbapenemases.

The taxonomy of *E. cloacae* complex is confusing, and uncertainty still remains about what species make up this complex. In the early 2000s, Hoffmann and Roggenkamp (8) sequenced *hsp60* and established 12 genetic clusters (I to XII) in *E. cloacae* complex. In 2005, the same authors further defined the taxonomy of *E. cloacae* complex and named cluster VII as *E. hormaechei* subsp. *hormaechei*, cluster VI as *E. hormaechei* subsp. *oharae*, and cluster VIII as *E. hormaechei* subsp. *steigerwaltii* (27). In 2014,

Gu et al. (28) described a novel *Enterobacter* species obtained from sourdough in China named *E. xiangfangensis*, which clustered closest to *E. hormaechei*.

The first study that described the global distribution of *E. cloacae* clones was undertaken by Izdebski et al (18), who performed MLST on 173 cephalosporin-resistant *E. cloacae* isolates obtained from Israel and several countries in Europe. MLST identified 88 STs among this collection, with ST78, ST114, ST108, and ST66 being the most common and widespread clones. A ST78 isolate was positive for KPC-2, and a ST114 isolate was positive for VIM-1 (18). With the exception of this study from Izdebski et al (18), limited information is available regarding the global distribution of ST93, ST90, ST78, ST105, and ST108 and consists mainly of sporadic reports (29–32).

Chavda et al. (9) characterized 74 carbapenem-resistant *Enterobacter* spp. (more than half of the isolates were obtained from New Jersey, USA), and most possessed different  $bla_{KPC}$ s, whereas only 2 isolates had  $bla_{NDM-1}$ . *E. xiangfangensis* also dominated, and ST171 was the most common clone. ST171 was rare in our collection ( $n = 4$ ) but did show genetic and geographic diversity. ST171 was divided into 3 clades: 171A, 171B, and 171C (online Technical Appendix 2 Figure). Clades 171B and 171C are associated with  $bla_{KPC}$  from the United States and United Kingdom (online Technical Appendix 2 Figure). Clade 171B ( $n = 2$ ) contained  $bla_{KPC-2}$  from Colombia and  $bla_{NDM-1}$  from Guatemala. Clade 171A ( $n = 1$ ) with  $bla_{NDM-1}$  was obtained from South Africa, and clade 171C with  $bla_{KPC-3}$  was obtained from the United States.

We noted interesting associations and geographic distribution between genetic structures surrounding carbapenemase genes and clades, clones, and species. First, identical genetic structures were situated in various STs within the same or different institutions of the same country (e.g., NDM-GE01 with  $bla_{NDM-1}$  in Vietnam; In87 and In237 with  $bla_{VIM-1}$  in Greece; In916 with  $bla_{VIM-1}$  in Italy; In624 with  $bla_{VIM-1}$  in Spain; and NDM-GE03 with  $bla_{NDM-1}$  in Guatemala). Second, identical genetic structure was present in different STs (ST105 and ST520), from different countries (e.g., In110 with  $bla_{VIM-1}$  in Croatia and Spain). Third, different genetic structures were present in the same STs and clades obtained from different countries (e.g., ST78 with In237 from Greece, ST78 with In916 from Italy, ST78 with In624 from Spain, ST114A with NDM-GE02 from Serbia, and ST114A with pNDM-U.S. from Romania). Last, an identical genetic structure (NDM-GE-U.S.) was found in different global species, STs, and clades.

These associations demonstrate that certain mobile genetic elements with carbapenemase genes have the ability to move between clones and clades of *Enterobacter* spp. on a global scale. This ability is highlighted by ST78 with  $bla_{VIM-1}$  within different integrons (In237, In916, and In624) that circulate between various countries (Greece,

Italy, and Spain). As some STs are introduced into different countries, they apparently acquire the local genetic elements prevalent in that country. Of special concern is the description of a common NDM genetic structure, named NDM-GE-U.S., previously found on pNDM-U.S. and first described in a *K. pneumoniae* from the United States (24). NDM-GE-U.S. was present in different species, clones, and clades obtained from 6 countries spanning 4 continents. Sequence similarity analysis suggested that it was present on different types of plasmids (pK518\_NDM1 and pNDM-HN380) among *Enterobacter* spp. with  $bla_{NDM}$ .

Our results support the current understanding that the carbapenem resistance pandemic is the consequence of circulating clones and the spread of mobile genetic elements. We found that certain clones and clades (ST78, ST90C, ST96, ST114A, ST114C, and ST141) containing particular genetic structures (In87, In624, In916, In237, NDM-GE01, NDM-GE02, and NDM-GE03) and carbapenemases were circulating locally within the same or between different institutions in certain countries (Greece, Guatemala, Italy, Spain, Serbia, and Vietnam). Other global clones and clades (ST90B, ST93, and ST108) contained various genetic structures and carbapenemases.

A limitation of this study was that plasmids harboring carbapenemases were not reconstructed because of the limitations of short-read sequencing (33). The characterization of plasmids is vital to fully comprehend the molecular epidemiology of *Enterobacter* spp. with carbapenemases, and a follow-up study using long-read sequencing is currently under way. In the meantime, our study highlights the importance of surveillance programs using whole-genome sequencing to provide insight into the characteristics and global distribution of clones and clades as well as their association with mobile genetic elements surrounding the different carbapenemase genes.

This work was supported by the John Mung Program from Kyoto University, Japan (Y.M.) and a research grant from the Calgary Laboratory Services (grant no. 10015169) to J.D.D.P. This work was also supported in part by National Institutes of Health grant nos. R01AI090155 (B.N.K.) and R21AI117338 (L.C.), and the Genome Center for Infectious Diseases grant no. U19AI110819 from the National Institutes of Health's National Institute of Allergy and Infectious Diseases (J.C.V.I.). The content is solely the responsibility of the authors and does not necessarily represent the official views of the National Institutes of Health. The funding organizations had no role in study design, data collection and interpretation, or the decision to submit the work for publication

Transparency declarations: J.D.D.P. had previously received research funds from Merck and AstraZeneca. P.B. is an employee of AstraZeneca, and M.M. is an employee of Merck. All other authors have nothing to declare.



## About the Author

Dr. Peirano is a research associate at Calgary Laboratory Services and the University of Calgary. Her main research interests revolve around the detection and molecular epidemiology of antimicrobial drug resistance mechanisms among gram-negative bacteria.

## References

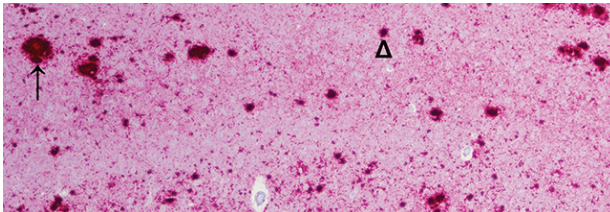
1. Tzouveleki LS, Markogiannakis A, Psychogiou M, Tassios PT, Daikos GL. Carbapenemases in *Klebsiella pneumoniae* and other *Enterobacteriaceae*: an evolving crisis of global dimensions. *Clin Microbiol Rev*. 2012;25:682–707. <http://dx.doi.org/10.1128/CMR.05035-11>
2. Mathers AJ, Peirano G, Pitout JD. The role of epidemic resistance plasmids and international high-risk clones in the spread of multidrug-resistant *Enterobacteriaceae*. *Clin Microbiol Rev*. 2015;28:565–91. <http://dx.doi.org/10.1128/CMR.00116-14>
3. Jean SS, Hsueh PR; SMART Asia-Pacific Group. Distribution of ESBLs, AmpC  $\beta$ -lactamases and carbapenemases among *Enterobacteriaceae* isolates causing intra-abdominal and urinary tract infections in the Asia-Pacific region during 2008–14: results from the Study for Monitoring Antimicrobial Resistance Trends (SMART). *J Antimicrob Chemother*. 2017;72:166–71. <http://dx.doi.org/10.1093/jac/dkw398>
4. Lazarovitch T, Amity K, Coyle JR, Ackerman B, Tal-Jasper R, Ofer-Friedman H, et al. The complex epidemiology of carbapenem-resistant *Enterobacter* infections: a multicenter descriptive analysis. *Infect Control Hosp Epidemiol*. 2015; 36:1283–91. <http://dx.doi.org/10.1017/ice.2015.186>
5. Nordmann P, Naas T, Poirel L. Global spread of carbapenemase-producing *Enterobacteriaceae*. *Emerg Infect Dis*. 2011;17:1791–8. <http://dx.doi.org/10.3201/eid1710.110655>
6. Peirano G, Bradford PA, Kazmierczak KM, Badal RE, Hackel M, Hoban DJ, et al. Global incidence of carbapenemase-producing *Escherichia coli* ST131. *Emerg Infect Dis*. 2014;20:1928–31. <http://dx.doi.org/10.3201/eid2011.141388>
7. Nurk S, Bankevich A, Antipov D, Gurevich AA, Korobeynikov A, Lapidus A, et al. Assembling single-cell genomes and mini-metagenomes from chimeric MDA products. *J Comput Biol*. 2013;20:714–37. <http://dx.doi.org/10.1089/cmb.2013.0084>
8. Hoffmann H, Roggenkamp A. Population genetics of the nomenclature *Enterobacter cloacae*. *Appl Environ Microbiol*. 2003;69:5306–18. <http://dx.doi.org/10.1128/AEM.69.9.5306-5318.2003>
9. Chavda KD, Chen L, Fouts DE, Sutton G, Brinkac L, Jenkins SG, et al. Comprehensive genome analysis of carbapenemase-producing *Enterobacter* spp.: new insights into phylogeny, population structure, and resistance mechanisms. *MBio*. 2016;7:e02093-16. <http://dx.doi.org/10.1128/mBio.02093-16>
10. Zankari E, Hasman H, Cosentino S, Vestergaard M, Rasmussen S, Lund O, et al. Identification of acquired antimicrobial resistance genes. *J Antimicrob Chemother*. 2012;67:2640–4. <http://dx.doi.org/10.1093/jac/dks261>
11. Carattoli A, Zankari E, García-Fernández A, Voldby Larsen M, Lund O, Villa L, et al. In silico detection and typing of plasmids using PlasmidFinder and plasmid multilocus sequence typing. *Antimicrob Agents Chemother*. 2014;58:3895–903. <http://dx.doi.org/10.1128/AAC.02412-14>
12. Croucher NJ, Page AJ, Connor TR, Delaney AJ, Keane JA, Bentley SD, et al. Rapid phylogenetic analysis of large samples of recombinant bacterial whole genome sequences using Gubbins. *Nucleic Acids Res*. 2015;43:e15. <http://dx.doi.org/10.1093/nar/gku1196>
13. Zhou Y, Liang Y, Lynch KH, Dennis JJ, Wishart DS. PHAST: a fast phage search tool. *Nucleic Acids Res*. 2011;39:W347–52.
14. Stamatakis A. RAxML version 8: a tool for phylogenetic analysis and post-analysis of large phylogenies. *Bioinformatics*. 2014;30:1312–3. <http://dx.doi.org/10.1093/bioinformatics/btu033>
15. Letunic I, Bork P. Interactive tree of life (iTOL) v3: an online tool for the display and annotation of phylogenetic and other trees. *Nucleic Acids Res*. 2016;44(W1):W242-5. <http://dx.doi.org/10.1093/nar/gkw290>
16. Cheng L, Connor TR, Sirén J, Aanensen DM, Corander J. Hierarchical and spatially explicit clustering of DNA sequences with BAPS software. *Mol Biol Evol*. 2013;30:1224–8. <http://dx.doi.org/10.1093/molbev/mst028>
17. Pitout JD, Nordmann P, Poirel L. Carbapenemase-producing *Klebsiella pneumoniae*, a key pathogen set for global nosocomial dominance. *Antimicrob Agents Chemother*. 2015;59:5873–84. <http://dx.doi.org/10.1128/AAC.01019-15>
18. Izdebski R, Baraniak A, Herda M, Fielt J, Bonten MJ, Carmeli Y, et al.; MOSAR WP2, WP3 and WP5 Study Groups. MLST reveals potentially high-risk international clones of *Enterobacter cloacae*. *J Antimicrob Chemother*. 2015;70:48–56. <http://dx.doi.org/10.1093/jac/dku359>
19. Haenni M, Saras E, Ponsin C, Dahmen S, Petitjean M, Hocquet D, et al. High prevalence of international ESBL CTX-M-15-producing *Enterobacter cloacae* ST114 clone in animals. *J Antimicrob Chemother*. 2016;71:1497–500. <http://dx.doi.org/10.1093/jac/dkw006>
20. Guillard T, Chollet P, Limelette A, Hocquet D, Matton L, Guyeux C, et al. Fluoroquinolone resistance mechanisms and population structure of *Enterobacter cloacae* non-susceptible to ertapenem in north-eastern France. *Front Microbiol*. 2015;6:1186. <http://dx.doi.org/10.3389/fmicb.2015.01186>
21. Kanamori H, Parobek CM, Juliano JJ, van Duin D, Cairns BA, Weber DJ, et al. A prolonged outbreak of KPC-3-producing *Enterobacter cloacae* and *Klebsiella pneumoniae* driven by multiple mechanisms of resistance transmission at a large academic burn center. *Antimicrob Agents Chemother*. 2017; 61:e01516-16.
22. Jones-Dias D, Manageiro V, Ferreira E, Barreiro P, Vieira L, Moura IB, et al. Architecture of class 1, 2, and 3 integrons from Gram negative bacteria recovered among fruits and vegetables. *Front Microbiol*. 2016;7:1400. <http://dx.doi.org/10.3389/fmicb.2016.01400>
23. Roach DJ, Burton JN, Lee C, Stackhouse B, Butler-Wu SM, Cookson BT, et al. A year of infection in the intensive care unit: prospective whole genome sequencing of bacterial clinical isolates reveals cryptic transmissions and novel microbiota. *PLoS Genet*. 2015;11:e1005413. <http://dx.doi.org/10.1371/journal.pgen.1005413>
24. Hudson CM, Bent ZW, Meagher RJ, Williams KP. Resistance determinants and mobile genetic elements of an NDM-1-encoding *Klebsiella pneumoniae* strain. *PLoS One*. 2014;9:e99209. <http://dx.doi.org/10.1371/journal.pone.0099209>
25. US Centers for Disease Control and Prevention. Detection of *Enterobacteriaceae* isolates carrying metallo-beta-lactamase—United States, 2010. *MMWR Morb Mortal Wkly Rep*. 2010;59:750.
26. Ho PL, Li Z, Lo WU, Cheung YY, Lin CH, Sham PC, et al. Identification and characterization of a novel incompatibility group X3 plasmid carrying *bla*<sub>NDM-1</sub> in *Enterobacteriaceae* isolates with epidemiological links to multiple geographical areas in China. *Emerg Microbes Infect*. 2012;1:e39. <http://dx.doi.org/10.1038/emi.2012.37>
27. Hoffmann H, Stindl S, Ludwig W, Stumpf A, Mehlen A, Heesemann J, et al. Reassignment of *Enterobacter dissolvens* to *Enterobacter cloacae* as *E. cloacae* subspecies *dissolvens* comb.

- nov. and emended description of *Enterobacter asburiae* and *Enterobacter kobei*. *Syst Appl Microbiol*. 2005;28:196–205. <http://dx.doi.org/10.1016/j.syapm.2004.12.010>
28. Gu CT, Li CY, Yang LJ, Huo GC. *Enterobacter xiangfangensis* sp. nov., isolated from Chinese traditional sourdough, and reclassification of *Enterobacter sacchari* Zhu et al. 2013 as *Kosakonia sacchari* comb. nov. *Int J Syst Evol Microbiol*. 2014;64:2650–6. <http://dx.doi.org/10.1099/ijss.0.064709-0>
  29. Bedenić B, Sardelić S, Luxner J, Bošnjak Z, Varda-Brkić D, Lukić-Grić A, et al. Molecular characterization of class b carbapenemases in advanced stage of dissemination and emergence of class d carbapenemases in *Enterobacteriaceae* from Croatia. *Infect Genet Evol*. 2016;43:74–82. <http://dx.doi.org/10.1016/j.meegid.2016.05.011>
  30. Cao XL, Cheng L, Zhang ZF, Ning MZ, Zhou WQ, Zhang K, et al. Survey of clinical extended-spectrum beta-lactamase-producing *Enterobacter cloacae* isolates in a Chinese tertiary hospital, 2012–2014. *Microb Drug Resist*. 2017;23:83–9. <http://dx.doi.org/10.1089/mdr.2015.0128>
  31. De Belder D, Faccone D, Tijet N, Melano RG, Rapoport M, Petroni A, et al. Novel class 1 integrons and sequence types in VIM-2 and VIM-11-producing clinical strains of *Enterobacter cloacae*. *Infect Genet Evol*. 2017;54:374–8. <http://dx.doi.org/10.1016/j.meegid.2017.07.019>
  32. Fernández J, Montero I, Martínez Ó, Fleites A, Poirel L, Nordmann P, et al. Dissemination of multiresistant *Enterobacter cloacae* isolates producing OXA-48 and CTX-M-15 in a Spanish hospital. *Int J Antimicrob Agents*. 2015;46:469–74. <http://dx.doi.org/10.1016/j.ijantimicag.2015.07.003>
  33. Arredondo-Alonso S, Willems RJ, van Schaik W, Schürch AC. On the (im)possibility of reconstructing plasmids from whole-genome short-read sequencing data. *Microb Genom*. 2017;3:e000128. <http://dx.doi.org/10.1099/mgen.0.000128>

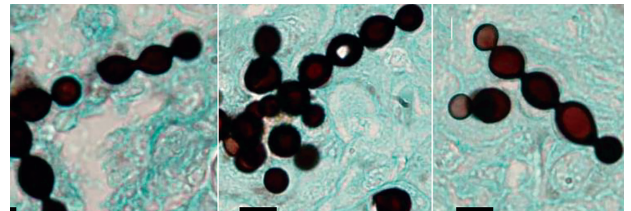
Address for correspondence: Johann D.D. Pitout, Calgary Laboratory Services, #9, 3535 Research Rd NW, Calgary, AB T2L 2K8, Canada; email: [johann.pitout@cls.ab.ca](mailto:johann.pitout@cls.ab.ca)

## December 2016: Zoonotic Infections

- Investigation of and Response to 2 Plague Cases, Yosemite National Park, California, USA, 2015
- Anomalous High Rainfall and Soil Saturation as Combined Risk Indicator of Rift Valley Fever Outbreaks, South Africa, 2008–2011



- Cutaneous Granulomas in Dolphins Caused by Novel Uncultivated *Paracoccidioides brasiliensis*
- Vertebrate Host Susceptibility to Heartland Virus
- Whole-Genome Characterization and Strain Comparison of VT2f-Producing *Escherichia coli* Causing Hemolytic Uremic Syndrome
- African Horse Sickness Caused by Genome Reassortment and Reversion to Virulence of Live, Attenuated Vaccine Viruses, South Africa, 2004–2014
- *Streptococcus agalactiae* Serotype IV in Humans and Cattle, Northern Europe
- Effect of Live-Poultry Market Interventions on Influenza A(H7N9) Virus, Guangdong, China
- Infectious Dose of *Listeria monocytogenes* in Outbreak Linked to Ice Cream, United States, 2015



- *Baylisascaris procyonis* Roundworm Seroprevalence among Wildlife Rehabilitators, United States and Canada, 2012–2015
- Electrolyte and Metabolic Disturbances in Ebola Patients during a Clinical Trial, Guinea, 2015
- Genetically Different Highly Pathogenic Avian Influenza A(H5N1) Viruses in West Africa, 2015
- Highly Pathogenic Reassortant Avian Influenza A(H5N1) Virus Clade 2.3.2.1a in Poultry, Bhutan
- Horizontal Transmission of Chronic Wasting Disease in Reindeer
- Highly Divergent Dengue Virus Type 2 in Traveler Returning from Borneo to Australia
- Unusual Ebola Virus Chain of Transmission, Conakry, Guinea, 2014–2015
- Human Infection with Novel Spotted Fever Group *Rickettsia* Genotype, China, 2015



**EMERGING  
INFECTIOUS DISEASES**

<https://wwwnc.cdc.gov/eid/articles/issue/22/12/table-of-contents>

# Genomic Epidemiology of Global Carbapenemase-Producing *Enterobacter* spp., 2008–2014

## Technical Appendix 2

### SMART and Astra-Zeneca Surveillance Programs

The Merck Study for Monitoring Antimicrobial Resistance Trends (SMART) program (2008–2014) included isolates from intra-abdominal and urinary tract infections from the following 55 countries: Egypt, Morocco, Kenya, South Africa, Tunisia (Africa); China, Hong Kong, India, Japan, Malaysia, Singapore, South Korea, Taiwan, Thailand, Vietnam (Asia); Croatia, Czech Republic, Estonia, France, Georgia, Greece, Germany, Hungary, Italy, Latvia, Lithuania, Portugal, Romania, Serbia, Slovenia, Spain, Switzerland, Turkey, United Kingdom (Europe); Argentina, Brazil, Chile, Colombia, Dominican Republic, Ecuador, Guatemala, Mexico, Puerto Rico, Panama, Uruguay, Venezuela (Latin America); Jordan, Lebanon, Israel, Saudi Arabia, UAE (Middle East); Canada, United States (North America); and Australia, New Zealand, Philippines (South Pacific).

The AstraZeneca surveillance program of antimicrobial resistance (2012–2014) included isolates from intra-abdominal, urinary tract, blood, skin and soft tissue and lower respiratory tract infections from the following 42 countries: Egypt, Kenya, Nigeria, South Africa (Africa); China, South Korea, Taiwan, Thailand (Asia); Austria, Belgium, Bulgaria, Greece, Czech Republic, Denmark, France, Germany, Hungary, Italy, Macedonia, Portugal, Poland, Russia, Romania, Slovakia, Spain, Turkey, United Kingdom (Europe); Argentina, Brazil, Chile, Colombia, Mexico, Uruguay, Venezuela (Latin America); Lebanon, Israel, Syria, Kuwait (Middle East); United States (North America); and Australia, Philippines, Japan (South Pacific).

Both programs collected 100 consecutive clinically relevant non-repeat Gram-negative bacteria per annum from each institution.



## Results Obtained with *Enterobacter aerogenes*

The phylogenetic tree containing *Enterobacter* spp. showed that *E. aerogenes* isolates were distant from other members of the *E. cloacae* complex (data not shown). A recent study showed that *E. aerogenes* was a closer relative to *Klebsiella pneumoniae* than the *E. cloacae* complex (1) and proposals to rename this species has been published (2).

The *E. aerogenes* (n = 10) from our study were obtained from intra-abdominal specimens (n = 4), urines (n = 5) and sputum (n = 1). The most common carbapenemase was KPC-2 from Brazil (n = 2), Colombia (n = 1), China (n = 1) and Germany (n = 1). This was followed by OXA-48 from Turkey (n = 2), Saudi Arabia (n = 1), Tunisia (n = 1) and NDM-6 from Guatemala (n = 1).

The *bla*<sub>KPC</sub> was associated with the Tn4401*b* isoform (2 isolates from Brazil), NTE<sub>KPC-II</sub> identical to pECAZ159\_2 [CP019006.1] (1 isolate from Colombia) and NTE<sub>KPC-Ib</sub> (2 isolates from China and Colombia). Isolates with *bla*<sub>OXA-48</sub> were part of Tn1999.2. The *bla*<sub>NDM-6</sub> from Guatemala had a unique genetic structural environment surrounding the carbapenemase named NDM-GE03 (MF327270).

## **β-lactamases, Antimicrobial Resistance Determinants, and Plasmid Analysis**

Online Technical Appendix 1 Table 1 (<https://wwwnc.cdc.gov/EID/article/24/6/17-1648-Techapp1.xlsx>) contains the study number, GenBank accession no, species, date, country of isolation, ST/clade, β-lactamases, antimicrobial resistance determinants, plasmid replicon types and plasmid multilocus sequence typing (MLST). Most isolates contained different types of β-lactamases ranging from 1 – 6 per isolate; the most common non-carbapenemase was CTX-M-15 followed by OXA-1. Various additional antimicrobial resistance determinants were present ranging from 0–15 per isolate; these include different plasmid-mediated quinolone resistance determinants and aminoglycoside modifying enzymes (online Technical Appendix 1 Table 1).

As shown by Arrendo-Alonso and colleagues (3), our attempts at reconstructing plasmids using plasmidSPAdes, Recycler and cBar failed and these programs performed poorly using short read sequencing data. Plasmidfinder showed that the majority of isolates harbored several plasmid replicon types ranging from 0–5 per isolate and include the following: IncA/C2, IncHI2,

IncHI2A, IncFII, IncFIB, IncN, IncQ1, IncL/M, IncR, IncX3, IncP6, IncU, ColRNAI, IncQ1 and Col types. Unfortunately, only 22 carbapenemase-containing contigs also included a plasmid replicon or mob gene. The most common plasmid MLST was IncHI2: ST1. We identified 16 isolates that harbored a single  $\beta$ -lactamase (carbapenemase) associated with a single replicon type; those with only OXA-48 were positive for IncL/M, those with only KPC-2 for IncR and IncN, isolates with only VIM-1 for IncA/C and IncN, those with only NDM-1 were positive for IncR, and the NDM-7 for IncX3 (online Technical Appendix 1 Table 1).

## References

1. Diene SM, Merhej V, Henry M, El Filali A, Roux V, Robert C, et al. The rhizome of the multidrug-resistant *Enterobacter aerogenes* genome reveals how new “killer bugs” are created because of a sympatric lifestyle. *Mol Biol Evol.* 2013;30:369–83. [PubMed](#)  
<http://dx.doi.org/10.1093/molbev/mss236>
2. Tindall BJ, Sutton G, Garrity GM. *Enterobacter aerogenes* Hormaeche and Edwards 1960 (Approved Lists 1980) and *Klebsiella mobilis* Bascomb et al. 1971 (Approved Lists 1980) share the same nomenclatural type (ATCC 13048) on the Approved Lists and are homotypic synonyms, with consequences for the name *Klebsiella mobilis* Bascomb et al. 1971 (Approved Lists 1980). *Int J Syst Evol Microbiol.* 2017;67:502–4. [PubMed](#) <http://dx.doi.org/10.1099/ijsem.0.001572>
3. Arredondo-Alonso S, Willems RJ, van Schaik W, Schürch AC. On the (im)possibility of reconstructing plasmids from whole-genome short-read sequencing data. *Microb Genom.* 2017;3:e000128. [PubMed](#) <http://dx.doi.org/10.1099/mgen.0.000128>
4. Hoffmann H, Roggenkamp A. Population genetics of the nomenspecies *Enterobacter cloacae*. *Appl Environ Microbiol.* 2003;69:5306–18. [PubMed](#) <http://dx.doi.org/10.1128/AEM.69.9.5306-5318.2003>

**Technical Appendix 2 Table 1.** The characteristics and global distribution of the different species among *Enterobacter cloacae* complex

Species (no.)	Hoffmann cluster	Global location (no.)	Carbapenemases (no.)	Dominant sequence types (no.)
<i>Enterobacter xiangfangensis</i> (n = 65)	VI (4)	Argentina (4), Australia (1), Brazil (2), Canada (1), Colombia (1), <b>Croatia (7)</b> , Greece (4), Guatemala (2), India (1), Italy (1), Kuwait (2), Morocco (2), Nigeria (1), Philippines (4), <b>Romania (6)</b> , Russia (3), <b>Serbia (7)</b> , South Africa (1), Spain (2), Taiwan (1), Tunisia (4), Turkey (3), USA (3), Venezuela (1), Vietnam (1)	IMP-13 (1), KPC-2 (10), KPC-3 (1), NDM-1 (21), OXA-48 (10), VIM-1 (15), VIM-1+OXA-48 (1), VIM-4 (2), VIM-4+OXA-48 (2), VIM-31+OXA-48 (2)	ST114 (19)
<i>Enterobacter hormaechei</i> subsp. <i>steigerwaltii</i> (n = 47)	VIII	Argentina (3), Australia (2), Austria (1), Belgium (1), Canada (1), China (1), Colombia (5), <b>Greece (11)</b> , Hungary (1), Italy (2), Jordan (1), Mexico (1), Puerto Rico (1), Romania (2), Spain (1), Taiwan (1), Thailand (1), Turkey (1), USA (3), <b>Vietnam (7)</b>	IMP-4 (2), IMP-8 (2), IMP-14 (1), KPC-2 (10), KPC-2+NDM-1 (1), KPC-3 (1), KPC-3 (1), KPC-5 (1), NDM-1 (7), NDM-1+OXA-48 (1), NDM-1+KPC-2 (1), OXA-48 (4), VIM-1 (15), VIM-4 (1), VIM-23 (1)	ST90 (10) ST93 (14)
<i>Enterobacter cloacae</i> cluster III (n = 14)	III	Greece (3), Italy (1), Mexico (2), Philippines (1), Serbia (1), Spain (1), Taiwan (3), Turkey (2)	IMP-4 (1), IMP-8 (3), NDM-1 (1), OXA-48 (1), VIM-1 (5), VIM-5 (1), VIM-23 (2)	ST78 (10)
<i>Enterobacter cloacae</i> subsp. <i>cloacae</i> (n = 13)	XI	Colombia (2), Guatemala (1), Nigeria (1), Philippines (3), Puerto Rico (1), Tunisia (2), Vietnam (3)	KPC-2 (2), KPC-4 (1), NDM-1 (7), NDM-7 (1), OXA-48 (2)	Various
<i>Enterobacter cloacae</i> cluster IV (n = 9)	IV	Kenya (1), Kuwait (3), Philippines (1), Spain (1), USA (1), Venezuela (2)	KPC-2 (2), KPC-3 (1), NDM-1 (1), NDM-7 (1), OXA-48 (3), VIM-1 (1)	Various
<i>Enterobacter hormaechei</i> subsp. <i>oharae</i> (n = 6)	VI	Australia (1), China (2), Spain (2), Israel (1)	IMP-1 (2), IMP-4 (1), OXA-48 (1), VIM-1 (2)	ST108 (6)
<i>Enterobacter asburiae</i> (n = 5)	I	Colombia (1), South Africa (1), USA (2), Taiwan (1)	IMP-8 (1), KPC-2 (3), NDM-1 (1)	Various
<i>Enterobacter kobei</i> (n = 1)	II	Spain (1)	VIM-1	ST520 (1)



**Technical Appendix 2 Table 2.** Characteristics and global distribution of major sequence types ( $\geq 10$  isolates per ST) among *Enterobacter cloacae* complex\*

Sequence Type (no.)	Clade (no.)	Carbapenemase and country of isolation (no.)	Genetic environment surrounding carbapenemase (GenBank accession no.)		
<i>E. cloacae</i> cluster III ST78 (n = 10)	78 (10)	VIM-1 from Greece (3)	In237 (EF690695)		
		VIM-1 from Italy (1)	In916 (KF856617)		
		IMP-4 from the Philippines (1)	ND		
		VIM-1 from Spain (1)	In624 (GQ422827)		
		IMP-8 from Taiwan (3)	In73 (AF322577)		
		OXA-48 from Turkey (1)	Tn1999.2		
<i>E. hormaechei</i> subsp. <i>steigerwaltii</i> ST90 (n = 10)	90B (3)	IMP-4 from Australia (1)	In809 (JX101693)		
	90C (7)	KPC-2 from Canada (1)	Tn4401a		
		NDM from Romania (1)	pNDM-U.S. (CP006661.1)		
		VIM-1 from Greece (7)	In237 (EF690695)		
<i>E. hormaechei</i> subsp. <i>steigerwaltii</i> ST93 (n = 14)	93 (14)	VIM-1 from Austria (1)	ND		
		OXA-48 from Belgium (1)	Tn1999.2		
		IMP-8 from China (1)	In655 (HQ651093)		
		NDM-1 from Romania (1)	pNDM-U.S. (CP006661.1)		
		VIM-1 from Spain (1)	In3103 (LC169588)		
		IMP-14 from Thailand (1)	In1314 (LC169569)		
		KPC-2 from USA (1)	Tn4401b		
		NDM-1 from Vietnam (5)	NDM-GE01 (MF288916)		
		NDM-1+OXA-48 from Vietnam (1)	NDM-GE01(MF288916)[NDM], Tn1999.2(OXA)		
		OXA-48 from Vietnam (1)	Tn1999.2		
		<i>E. xiangfangensis</i> ST114 (n = 19)	114A (13)	VIM-4, OXA-48 from Kuwait (2)	In416 (LC169572) [VIM], Tn1999.2 (OXA-48)
			114B (4)	OXA-48 from Morocco (1)	OXA-GE01 (MF327271)
NDM-1 from Romania (1)	pNDM-U.S. (CP006661.1)				
114C (2)	NDM-1 from Serbia (7)		NDM-GE02 (MF346371)		
	OXA-48 from Tunisia (2)		Tn1999.2, OXA-GE01 (MF327271)		
VIM-1 from Greece (3)	In4873 (LC169572)				
VIM-1 from Italy (1)	In916 (KF856617)				
VIM-1 from USA (1)	In1209 (LC169573)				
KPC-2 from USA (1)	Tn4401b				

\*The minor STs (5–9 isolates/ST) includes ST105 and ST108 (both with 6 isolates) were distinguished on the basis of their molecular epidemiology. ST105 from *E. xiangfangensis* was only present in Croatia where it contained *bla*<sub>VIM-1</sub> within In110; and in contrast, all the *E. hormaechei* subsp. *oharae* isolates belonged to ST108 and showed a global distribution (Australia [with *bla*<sub>IMP-4</sub>], China [with *bla*<sub>IMP-1</sub>], Israel [with *bla*<sub>OXA-48</sub>], and Spain [with *bla*<sub>VIM-1</sub>]). In, Integron; ND, not detected due to limitation of short read sequencing.

**Technical Appendix 2 Table 3.** Global distribution of sequence types, clades, genetic environments surrounding the carbapenemase genes among *Enterobacter cloacae* complex

Carbapenemase (no.)	Sequence types (no.)	Country of origin (no.)	Genetic environment (GenBank accession no.)
IMPs (14)	108 (2)	China (2)	ND
IMP-1 (2)	78A (1)	Philippines (1)	ND
IMP-4 (4)	90 (1)	Australia (1)	In809 (JX101693)
IMP-8 (6)	108 (1)	Australia (1)	ND
IMP-13 (1)	133 (1)	Australia (1)	ND
IMP-14 (1)	25 (1)	Taiwan (1)	In73 (AF322577)
	78A (3)	Taiwan (3)	In73 (AF322577)
	93 (1)	China (1)	In655 (HQ651093)
	204 (1)	Taiwan (1)	ND
	182 (1)	Spain (1)	In1319 (LC169585)
	93 (1)	Thailand (1)	In1314 (LC169569)
	KPCs (33)	62 (2)	Argentina (2)
KPC-2 (27)	66 (2)	Argentina (1), Brazil (1)	ND, Tn4401b
KPC-2+NDM-1 (1)	88 (2)	Colombia (2)	ND, Tn4401b
KPC-3 (3)	90B (1)	Canada (1)	Tn4401a
KPC-4 (1)	93 (1)	USA (1)	Tn4401b
KPC-5 (1)	110 (1)	Argentina (1)	ND
	114C (1)	USA (1)	Tn4401b
	171B (1)	Colombia (1)	KPC-GE01 (MF327266)
	200 (1)	Brazil (1)	Tn4401b
	418 (1)	Russia (1)	ND
	456 (1)	Colombia (1)	Tn4401b
	484 (2)	USA (2)	Tn4401b
	510 (2)	Colombia (2)	Tn4401b, KPC-GE02 (MF327263)
	511 (3)	Argentina (3)	ND
	516 (1)	Venezuela (1)	KPC-GE03 (MF327265)

Carbapenemase (no.)	Sequence types (no.)	Country of origin (no.)	Genetic environment (GenBank accession no.)
	523 (1)	Venezuela (1)	Tn4401b
	526 (1)	Venezuela (1)	Tn4401b
	535 (1)	USA (1)	Tn4401b
	610 (1)	Colombia (1)	NTEKPC-II identical pECAZ159_2 (CP019006.1)
	837 (1)	Colombia (1)	NTEKPC-II identical pECAZ159_2 (CP019006.1)
	88 (1)	Colombia	Tn4401b(KPC), pNDM-U.S. (CP006661.1)[NDM]
	171C (1)	USA (1)	Tn4401d
	461 (1)	USA (1)	Tn4401b
	515 (1)	USA (1)	Tn4401d
	137 (1)	Puerto Rico (1)	KPC-GE04 (MF351991)
	204 (1)	Puerto Rico (1)	Tn4401b
NDMs (41)	66 (1)	Canada (1)	NDM-GE-VF‡
NDM-1 (38)	90B (1)	Romania (1)	NDM-GE-U.S.†
NDM-1+OXA-48 (1)	93 (1)	Romania (1)	NDM-GE-U.S.†
NDM-7 (2)	93 (6)	Vietnam (6)	NDM-GE01 (MF288916)
	114A (1)	Romania (1)	NDM-GE-U.S.†
	114A (7)	Serbia (7)	NDM-GE02 (MF346371)
	136 (2)	Philippines (2)	NDM-GE-U.S.†
	171 (2)	South Africa (1) Guatemala(1)	GE-pC06114_1§
	182 (3)	Guatemala (1)	NDM-GE03 (MF327270)
	270 (1)	Philippines (1)	NDM-GE03 (MF327270)
	279 (3)	Vietnam (1)	NDM-GE-U.S.†
	418 (1)	Philippines(1)	NDM-GE01 (MF288916)
	435 (1)	Romania (3)	NDM-GE-U.S.†
	462 (1)	India (1)	NDM-GE-U.S.†
	513 (1)	South Africa (1)	GE-PEL¶
	518 (1)	Vietnam (1)	NDM-GE-U.S.†
	519 (1)	Vietnam (1)	NDM-GE01 (MF288916)
	524 (1)	Serbia (1)	NDM-GE-U.S.†
	525 (1)	Guatemala (1)	NDM-GE04 (MF327264)
	609 (1)	Vietnam (1)	NDM-GE03 (MF327270)
	832 (1)	Philippines (1)	NDM-GE01 (MF288916)
	836 (1)	Philippines (1)	NDM-GE-U.S.†
	93 (1)	Kenya (1)	NDM-GE-U.S.†
	834 (1) 835 (1)	Nigeria (1)	NDM-GE-U.S.†
		Vietnam (1)	GE-PittNDM01#
		Philippines (1)	NDM-GE01(MF288916)[NDM], Tn1999.2(OXA)
		Philippines (1)	GE-pEC50-NDM7**
			GE-pEC50-NDM7**
OXA-48 (21)	78A (1)	Turkey (1)	ND
	93 (2)	Belgium (1), Vietnam (1)	ND
	98 (1)	Russia (1)	ND
	108 (1)	Israel (1)	ND
	109 (1)	Russia (1)	ND
	114A (3)	Morocco (1)	OXA-GE01 (MF327271)
	121 (2)	Tunisia (2)	OXA-GE01 (MF327271), Tn1999.2
	182 (1)	Morocco (1)	OXA-GE01 (MF327271)
	190 (1)	Nigeria (1)	ND
	200 (1)	Tunisia (1)	Tn1999.2
	433 (2)	Turkey (1)	OXA-GE02 (MF327268)
	435 (1)	Turkey (1)	OXA-GE03 (MF327269)
	456 (2)	Kuwait (2)	OXA-GE04 (MF327267)
	521 (1)	Kuwait (1)	ND
	522 (1)	Tunisia (2)	Tn1999.2
		Jordan (1)	Tn1999.2
		Spain (1)	Tn1999.2
VIMs (51)	66 (1)	Taiwan (1)	ND
VIM-1 (39)	78 (5)	Greece (3)	In237 (EF690695)
VIM-1+OXA-48 (1)	88 (1)	Italy (1)	In916 (KF856617)
VIM-4 (3)	90C (7)	Spain (1)	In624 (GQ422827)
VIM-4+OXA-48 (2)	93 (2)	Italy (1)	In1318 (LC169584)
VIM-5 (1)	96 (1)	Greece (7)	In237 (EF690695)
VIM-23 (3)	98 (1)	Austria (1)	ND
VIM-31+OXA-48 (2)	105 (6)	Spain (1)	In3103 (LC169588)
	108 (2)	Spain (1)	In624 (GQ422827)
	110 (2)	Greece (1)	In87 (AY648125)
	114B (4)	Croatia (6)	In110 (AJ969234)
	114C (1)	Spain (2)	In624 (GQ422827)

Carbapenemase (no.)	Sequence types (no.)	Country of origin (no.)	Genetic environment (GenBank accession no.)
	136 (1)	Greece (2)	In87 (AY648125)
	141 (2)	Greece (3)	In4873 (LC169572)
	514 (1)	Italy (1)	In916 (KF856617)
	520 (1)	USA (1)	In1209 (LC169573)
	527 (1)	Tunisia (1)	In1315 (LC169570)
	418 (1)	Greece (2)	In87 (AY648125)
	62 (1)	Italy (1)	ND
	265 (2)	Spain (1)	In110 (AJ969234)
	114A (2)	Austria (1)	In1373 (LC224311)
	512 (1)	Croatia (1)	ND (VIM), Tn 1999.2 (OXA)
	175 (1)	Hungary (1)	ND
	796 (2)	Romania (2)	In1323 (LC169579)
	200 (2)	Kuwait (2)	In416 (AJ704863), ND (OXA)
		Turkey (1)	In1316 (LC169578)
		Mexico (1)	In1372 (LC224310)
		Mexico (2)	In1374 (LC224312)
		Turkey (2)	In669 (JN982330)[VIM], OXA-GE03 (MF327269)[OXA]

\*In, Integron; ND, not detected due to limitation of short read sequencing.

†Identical to a region on pNDM-U.S. (CP006661.1).

‡Identical to a region on pNDM-VF (KR733543.1).

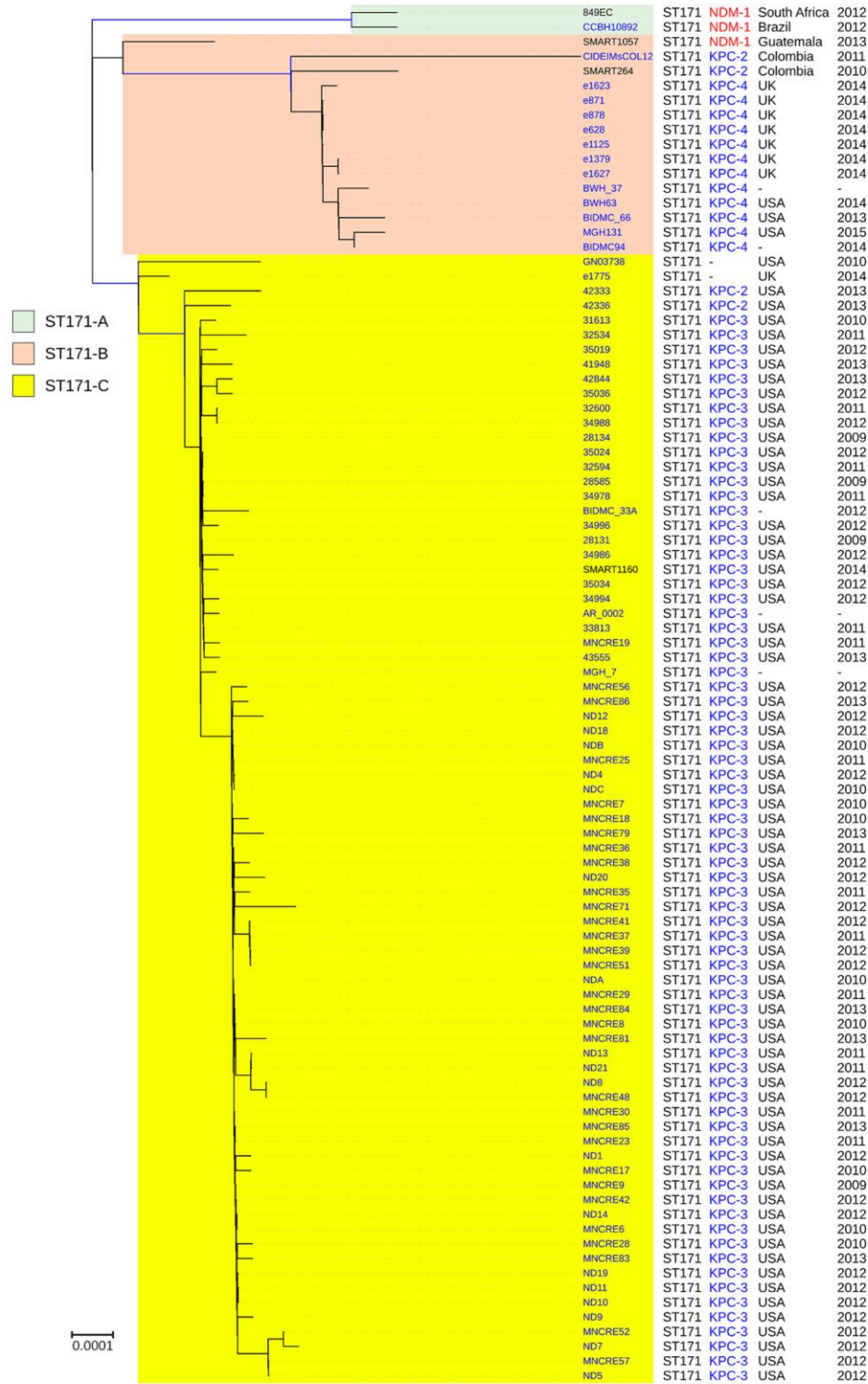
§Identical to a region on pC06114\_1 (CP016035.1).

¶Similar to a region on *P. mirabilis* PEL (KF856624.1).

#Identical to a region on PittNDM01 plasmid1 (CP006799.1).

\*\*Identical to a region pEC<sub>50</sub>-NDM7 (KX470735.1).





**Technical Appendix 2 Figure.** Phylogenetic tree of the different clades among *Enterobacter xiangfangensis* ST171. Number of isolates: 338. Root: *Enterobacter hormaechei* subsp. *hormaechei* ATCC49162. Number of total core SNP found: 317867. Number of core SNP used to draw the tree: 27,705 (after phages and recombination sites were excluded).