

Transfer of Carbapenem-Resistant Plasmid from *Klebsiella pneumoniae* ST258 to *Escherichia coli* in Patient

Moran G. Goren, Yehuda Carmeli,
Mitchell J. Schwaber, Inna Chmelnitsky,
Vered Schechner, and Shiri Navon-Venezia

Klebsiella pneumoniae carbapenemase (KPC) 3–producing *Escherichia coli* was isolated from a carrier of KPC-3–producing *K. pneumoniae*. The KPC-3 plasmid was identical in isolates of both species. The patient's gut flora contained a carbapenem-susceptible *E. coli* strain isogenic with the KPC-3–producing isolate, which suggests horizontal interspecies plasmid transfer.

Over the past 2 years, the extremely drug-resistant *Klebsiella pneumoniae* carbapenemase (KPC)–producing *K. pneumoniae* sequence type 258 (KpnST258) has emerged as an important nosocomial pathogen worldwide. It has spread in the United States and in various countries in Europe and Asia (1–3). The high level of antimicrobial drug resistance in this bacterium is conferred by a plasmid-encoded KPC, which confers resistance to all cephalosporins, monobactams, and carbapenems (4). Infection with carbapenem-resistant *K. pneumoniae* is associated with an increased proportion of deaths compared to carbapenem-susceptible *K. pneumoniae* (5). Although *Klebsiella* with plasmid-mediated carbapenem resistance is a major risk to hospitalized patients, spread of these resistance plasmids into *Escherichia coli* poses an even greater public health threat because resistant *E. coli* may become part of the normal gut flora and thereby become a notable source of infections among sick and the healthy persons in healthcare settings and in the community (6).

In 2008, a carbapenem-nonsusceptible *E. coli*–producing KPC-3 isolate (Eco2) was identified in Tel Aviv Sourasky Medical Center in Israel. Until this case, carbap-

Author affiliations: Tel Aviv Sourasky Medical Center, Tel Aviv, Israel (M.G. Goren, Y. Carmeli, I. Chmelnitsky, V. Schechner, S. Navon-Venezia); and National Center for Infection Control, Tel Aviv (Y. Carmeli, M.J. Schwaber, S. Navon-Venezia)

DOI: 10.3201/eid1606.091671

enem resistance in *E. coli* at the hospital was related exclusively to KPC-2 production (7). KPC production in *E. coli* remains rare worldwide, even in areas where KPC-producing *K. pneumoniae* isolates are identified. We aimed to investigate the origin of KPC-3 in this *E. coli* isolate and to explore a possible molecular and epidemiologic link between the presence of bla_{KPC-3} in this species and in the KpnST258 strain prevalent in our hospital.

The Study

In April 2008 a carbapenem-nonsusceptible *E. coli* strain, marked as Eco2, was recovered from the gall bladder drainage of a 91-year-old man with dialysis-dependent end-stage renal disease, congestive heart failure, anemia, and peptic ulcer disease. A month earlier, the patient had been hospitalized with sepsis that developed after an infected heel wound had required amputation of the left leg below the knee. The patient was treated with ertapenem, metronidazole, colistin, and vancomycin. Acute cholecystitis developed, and the patient underwent cholecystectomy. During his hospital stay, the patient underwent screening for carriage of carbapenem-resistant *Enterobacteriaceae* (CRE) as part of a routine infection control program aimed at limiting the spread of CRE. Two rectal swabs were collected 1 week apart. The first swab specimen was negative for CRE by culture, and the second swab specimen showed a carbapenem-resistant *K. pneumoniae* strain (marked Kpn1), which was PCR positive for bla_{KPC} . One month after the patient's admission, a carbapenem-nonsusceptible *E. coli* (Eco2) was isolated from drainage at the cholecystectomy site, which prompted this study.

Microbiologic and molecular investigations (pulsed-field gel electrophoresis [PFGE], DNA isolation, isoelectric focusing analysis [IEF], PCR detection of resistance genes, plasmid isolation, transformation, and Southern analysis) were performed as described (2,4,7). The carbapenem-nonsusceptible *E. coli* isolated from the clinical specimen (Eco2) was initially identified by Vitek-2 (bioMérieux, Marcy-l'Etoile, France) as resistant to imipenem (MIC > 16 mg/L). Further antimicrobial-drug susceptibility testing of the strain by using agar dilution and Etest (AB Biodisk, Solna, Sweden) showed MICs in the resistant range for ceftriaxone and aztreonam; in the intermediate range for ceftazidime and piperacillin/tazobactam; and in the susceptible range for cefepime, ertapenem, meropenem, imipenem, aminoglycosides, quinolones, tigecycline, and colistin (online Appendix Table, www.cdc.gov/EID/content/16/6/1014-appT.htm). IEF identified 2 β -lactamases with isoelectric pH values of 5.4 and 6.7, corresponding to those of TEM-type and KPC. β -lactamase gene PCR screening and sequencing indicated the presence of bla_{TEM-1} and bla_{KPC-3} . Results of screening for other β -lactamase genes were negative.

Transformation of plasmids purified from Eco2 into an *E. coli* DH10B recipient strain (Eco2-T) indicated transfer of a single plasmid that encoded these bla_{TEM-1} and bla_{KPC-3} (Figure 1, panel A), and increased the MICs of the recipient strains to broad-spectrum cephalosporins and carbapenems (online Appendix Table). PFGE identified the genetic similarity between the colonizing *Klebsiella* (Kpn1) and a representative KpnST258 (isolate Kpn557 described previously [4]) (Figure 2). Susceptibility testing of Kpn1 reflected the extremely drug-resistant phenotype characteristic of isolates belonging to this clone (12) (online Appendix Table).

We compared plasmids of Kpn1 and Eco2. Kpn1 carried 4 different plasmids, whereas Eco2 carried 1 plasmid that correlated with the 105-kb plasmid of Kpn1. Experiments to transform Eco2 and Kpn1 plasmids into an *E. coli* DH10B recipient, followed by selection on plates containing 100 μ g/mL ampicillin and screening for bla_{KPC} -positive colonies, showed that DH10B was transformed with the 105-kb KPC-3-encoding plasmid (Figure 1, panel A). This plasmid correlated in size with that of pKpQIL, the KPC-3-encoding plasmid of *Klebsiella* ST258 in Israel (13). Plasmid DNA restriction fragment length polymorphism showed that band patterns of the 2 KPC-3-encoding plasmids of Kpn1 and Eco2 were highly similar (98% similarity) (Figure 1, panel B), and Southern analysis with a bla_{KPC-3} probe showed the same hybridization pattern (Figure 1, panel C).

We aimed to determine whether the patient's gut was colonized with a carbapenem-susceptible *E. coli* strain, which would ultimately serve as the in vivo recipient of the bla_{KPC-3} -encoding plasmid. Thus, the first broth culture prepared (obtained before the patient was colonized with KPC-3-producing *E. coli*) was processed. Aliquots (0.1 mL) were directly plated onto a MacConkey agar plate (Hy-Labs, Rehovot, Israel). *E. coli* colonies isolated from the plate were restreaked onto a MacConkey agar plate, yielding an *E. coli* strain 7364 (Eco1) that was susceptible to all antimicrobial drugs tested (online Appendix Table). PFGE DNA fingerprinting showed that Eco1 was 100% identical to the KPC-3-producing clinical strain Eco2, isolated from the clinical specimen (Figure 2). Plasmid analysis of this strain, however, proved that it lacked plasmid pKpQIL (results not shown).

Elements belonging to KPC transposon Tn4401, including *tnpA*, *tnpR*, *ISKpn6*, and *ISKpn7* (14), were identified by PCR and sequencing on both KPC-3-encoding plasmids originating from Kpn1 and Eco2. These genetic determinants were absent in the susceptible Eco1. These data suggest that Eco1 has acquired pKpQIL from Kpn1 in the patient's gut, leading to the formation of Eco2. Although acquisition of the plasmid increased MICs for imipenem, meropenem, and ertapenem considerably, it did not confer full resistance (online Appendix Table) presumably due to copy number of the plasmid or the expression level

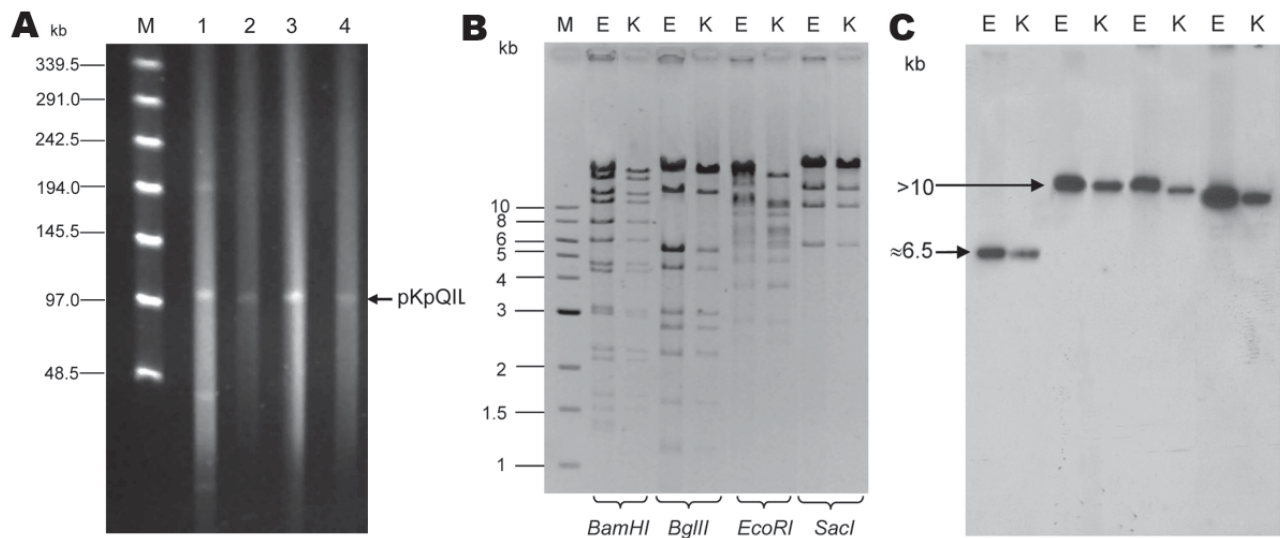


Figure 1. A) Analysis of *Klebsiella pneumoniae* carbapenemase (KPC)-encoding plasmids in isolates Kpn1 (1), Eco2 (3), Kpn1-T (2), and Eco2-T (4), Israel, 2008. Plasmid size estimation was performed by digestion of DNA with S1 nuclease (20 U; Promega, Madison, WI, USA) followed by pulsed-field gel electrophoresis (PFGE) with the CHEF-DR III apparatus (Bio-Rad Laboratories, Inc., Hercules, CA, USA), as described (8–11). Lambda ladder PFG marker (New England Biolabs, Beverly, MA, USA) was used as a molecular size marker (lane M). B) Restriction fragment length polymorphism of the KPC-3-encoding plasmid from Kpn1-T (K) and Eco2-T (E). Plasmid DNA was digested with *Bam*HI, *Bgl*II, *Eco*RI, and *Sac*I endonucleases (New England Biolabs) and underwent PFGE on a 1% agarose gel. The level of similarity between restriction patterns was calculated by using GelcomparII software version 5 (Applied Maths, Kortrijk, Belgium). Lane M, 1-kb DNA ladder (New England Biolab). C) Southern blot analysis of plasmid DNA hybridized with bla_{KPC-3} -labeled probe. Plasmid restriction products were transferred to a Hybond N⁺ membrane (Amersham Biosciences, Little Chalfont, United Kingdom), cross-linked with UV light, and hybridized with a bla_{KPC-3} -labeled probe (892-bp product of bla_{KPC-3}).

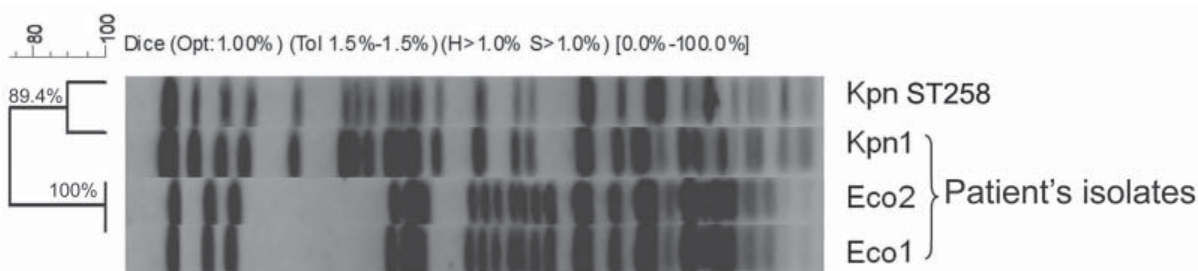


Figure 2. Pulsed-field gel electrophoresis demonstrating genetic relatedness of study isolates Eco2, Eco1, and Kpn1, and a representative *Klebsiella pneumoniae* isolate of the epidemic clone, Kpn ST258, Israel, 2008. Bacterial DNA was prepared and cleaved with 20U *SpeI* endonuclease (New England Biolabs, Beverly, MA, USA), followed by electrophoresis in a CHEF-DR III apparatus (Bio-Rad Laboratories, Inc., Hercules, CA, USA), as described (4). The macrorestriction patterns of the isolates were compared according to the Dice similarity index (1.5% tolerance interval) by using GelcomparII software (Applied Maths, Kortrijk, Belgium).

of bla_{KPC-3} in *E. coli*. Curing of pKpQIL from Eco2 was performed by sequential transfers at an elevated temperature (42°C). The cured strain, which lacked the KPC-encoding plasmid, showed full susceptibility to all antimicrobial drugs tested, similar to the Eco1 strain isolated from the patient's gut flora.

The patient received a combination of 4 antimicrobial agents concomitantly (ertapenem, metronidazole, colistin, and vancomycin) during the period in which Eco1 acquired in vivo the plasmid pKpQIL, thereby becoming Eco2. We believe that the selection pressure imposed by these antimicrobial agents contributed to the sequence of events that led to plasmid transfer. We hypothesize that interspecies conjugation and antimicrobial pressure led to the preferential selection of Eco2, rather than Eco1, as a determinant of infection in this patient.

Interspecies KPC transfer can presumably occur through the dissemination of mobile genetic elements as has been described for transfer of the *mecA* gene between strains of *Staphylococcus aureus* (15). bla_{KPC} may spread through transfer by virtue of its location on the Tn4401 transposon (14), or by dissemination of the intact KPC-encoding plasmid, likely through natural conjugation. Multiple attempts to mimic the natural transfer of pKpQIL, the KPC-3-encoding plasmid from Kpn1 into Eco1 by using conjugation experiments were not successful. The isolation of an isogenic, antimicrobial drug-susceptible *E. coli* clone enabled us to decipher the natural order of the interspecies genetic transfer event.

Conclusions

With increasing global spread of KPC-producing *K. pneumoniae* ST258, the likelihood increases of interspecies transfer of drug-resistance determinants into a highly fit *E. coli* clone. Such an event may have severe public health consequences, leading to elimination of any effective antimicrobial drug treatment against the most common human bacterial pathogens.

This work was performed in partial fulfillment of the requirements for the MS degree of M.G.G., Sackler Faculty of Medicine, Tel Aviv University, Israel

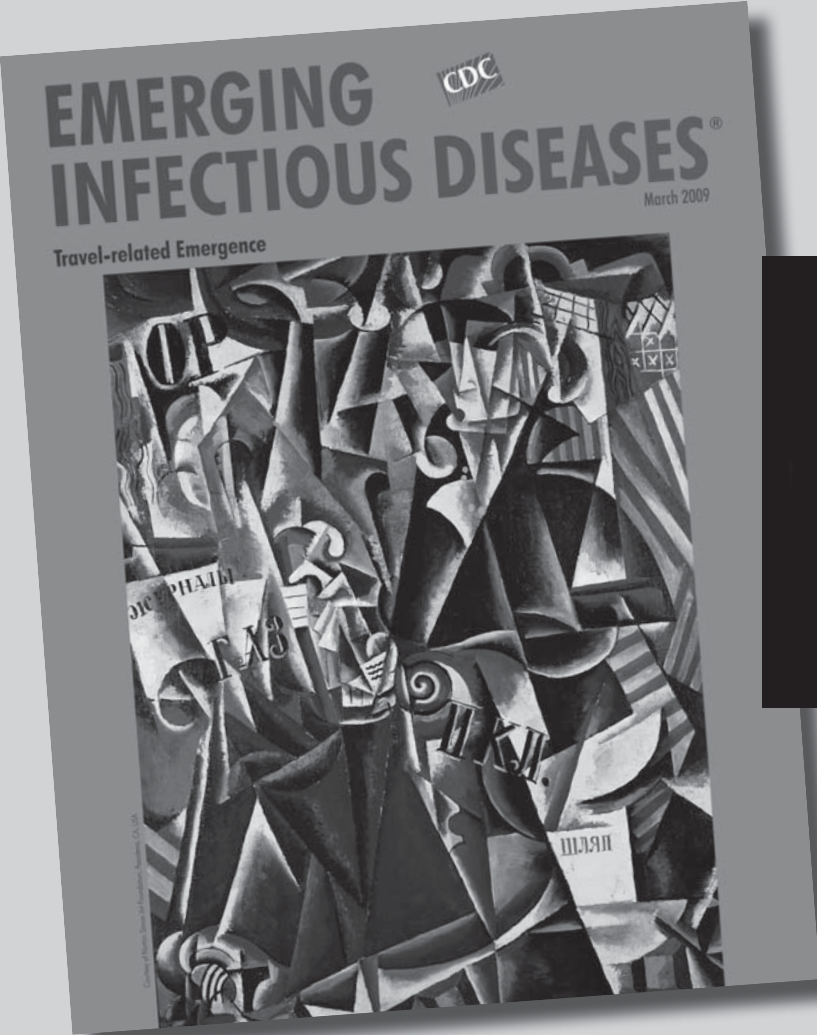
Mrs Goren is a researcher and master's degree candidate in the Molecular Epidemiology and Antibiotic Resistance Laboratory in Tel Aviv Medical Center. Her primary research focus is characterization of the molecular epidemiology of carbapenem resistance among *Escherichia coli* clinical isolates.

References

1. Yigit H, Queenan AM, Anderson GJ, Domenech-Sanchez A, Biddle JW, Steward CD, et al. Novel carbapenem-hydrolyzing beta-lactamase, KPC-1, from a carbapenem-resistant strain of *Klebsiella pneumoniae*. *Antimicrob Agents Chemother*. 2001;45:1151-61. DOI: 10.1128/AAC.45.4.1151-1161.2001
2. Kitchel B, Rasheed JK, Patel JB, Srinivasan A, Navon-Venezia S, Carmeli Y, et al. Molecular epidemiology of KPC-producing *Klebsiella pneumoniae* isolates in the United States: clonal expansion of multilocus sequence type 258. *Antimicrob Agents Chemother*. 2009;53:3365-70. DOI: 10.1128/AAC.00126-09
3. Woodford N, Zhang J, Warner M, Kaufmann ME, Matos J, Macdonald A, et al. Arrival of *Klebsiella pneumoniae* producing KPC carbapenemase in the United Kingdom. *J Antimicrob Chemother*. 2008;62:1261-4. DOI: 10.1093/jac/dkn396
4. Leavitt A, Navon-Venezia S, Chmelnitsky I, Schwaber MJ, Carmeli Y. Emergence of KPC-2 and KPC-3 in carbapenem-resistant *Klebsiella pneumoniae* strains in an Israeli hospital. *Antimicrob Agents Chemother*. 2007;51:3026-9. DOI: 10.1128/AAC.00299-07
5. Schwaber MJ, Klarfeld-Lidji S, Navon-Venezia S, Schwartz D, Leavitt A, Carmeli Y. Predictors of carbapenem-resistant *Klebsiella pneumoniae* acquisition among hospitalized adults and effect of acquisition on mortality. *Antimicrob Agents Chemother*. 2008;52:1028-33. Medline DOI: 10.1128/AAC.01020-07
6. Schwaber MJ, Carmeli Y. Carbapenem-resistant Enterobacteriaceae: a potential threat. *JAMA*. 2008;300:2911-3. Medline DOI: 10.1001/jama.2008.896
7. Navon-Venezia S, Chmelnitsky I, Leavitt A, Schwaber MJ, Schwartz D, Carmeli Y. Plasmid-mediated imipenem-hydrolyzing enzyme KPC-2 among multiple carbapenem-resistant *Escherichia coli* clones in Israel. *Antimicrob Agents Chemother*. 2006;50:3098-101. DOI: 10.1128/AAC.00438-06

8. Noller AC, McEllistrem MC, Stine OC, Morris JG Jr, Boxrud DJ, Dixon B, et al. Multilocus sequence typing reveals a lack of diversity among *Escherichia coli* O157:H7 isolates that are distinct by pulsed-field gel electrophoresis. *J Clin Microbiol*. 2003;41:675–9.
9. Schlesinger J, Navon-Venezia S, Chmelnitsky I, Hammer-Münz O, Leavitt A, Gold HS, et al. Extended-spectrum beta-lactamases among *Enterobacter* isolates obtained in Tel Aviv, Israel. *Antimicrob Agents Chemother*. 2005;49:1150–6. DOI: 10.1128/AAC.49.3.1150-1156.2005
10. Barton BM, Harding GP, Zuccarelli AJ. A general method for detecting and sizing large plasmids. *Anal Biochem*. 1995;226:235–40. DOI: 10.1006/abio.1995.1220
11. Li L, Lim CK. A novel large plasmid carrying multiple beta-lactam resistance genes isolated from a *Klebsiella pneumoniae* strain. *J Appl Microbiol*. 2000;88:1038–48. DOI: 10.1046/j.1365-2672.2000.01069.x
12. Navon-Venezia S, Leavitt A, Schwaber MJ, Rasheed JK, Srinivasan A, Patel JB, et al. First report on a hyperepidemic clone of KPC-3-producing *Klebsiella pneumoniae* in Israel genetically related to a strain causing outbreaks in the United States. *Antimicrob Agents Chemother*. 2009;53:818–20. DOI: 10.1128/AAC.00987-08
13. Leavitt A, Chmelnitsky I, Ofek I, Carmeli Y, Navon-Venezia S. Plasmid pKpQIL harboring KPC-3 and TEM-1 renders carbapenem resistance in extremely drug resistant epidemic *Klebsiella pneumoniae*. *J Antimicrob Chemother*. 2009. In press.
14. Naas T, Cuzon G, Villegas MV, Lartigue MF, Quinn JP, Nordmann P. Genetic structures at the origin of acquisition of the beta-lactamase *bla*_{KPC} gene. *Antimicrob Agents Chemother*. 2008;52:1257–63. DOI: 10.1128/AAC.01451-07
15. Wielders CL, Vriens MR, Brisse S, de Graaf-Miltenburg LA, Troelstra A, Fleer A, et al. Evidence for in-vivo transfer of *mecA* DNA between strains of *Staphylococcus aureus*. *Lancet*. 2001;357:1674–5. DOI: 10.1016/S0140-6736(00)04832-7

Address for correspondence: Shiri Navon-Venezia, Molecular Epidemiology and Antimicrobial Resistance Laboratory, Division of Epidemiology, Tel Aviv Medical Center, 6 Weizman St, Tel Aviv 64239, Israel; email: shiri_nv@tasmc.health.gov.il



Search
past issues

EID
online

www.cdc.gov/eid

Appendix Table. Patient's bacterial isolates and *Escherichia coli* DH10B transformed with their KPC-3-encoding plasmids, Israel, 2008*

Bacteria	Date of isolation	Source	KPC-3 β -lactamase	MIC (mg/L)†													
				CTX	CAZ	FEP	AZT	TZP	AMK	GEN	CIP	LFX	IMI‡	MER‡	ETP‡	TCG§	COL§
Eco2	2008 Apr	Gall bladder fluid	+	>64	16	2	>64	64	4	<1	<0.25	<0.25	2	0.38	2	0.125	0.094
Eco2-T¶	–	Laboratory strain	+	8	>64	2	>64	64	<2	<1	<0.25	<0.25	<0.5	0.38	2	0.125	0.047
Kpn1	2008 Mar	Rectal swab	+	>64	>64	>64	>64	>128	>64	4	>4	>8	16	>32	>32	1	0.047
Kpn1-T#	–	Laboratory strain	+	8	16	<1	>64	64	<2	<2	<0.25	<0.25	0.5	0.38	1	0.125	0.19
Eco1	2008 Mar	Rectal swab	–	<1	<1	<1	<1	<4	<2	<1	<0.25	<0.25	0.19	0.012	0.006	0.19	0.047
<i>E. coli</i> DH10B**	–	Laboratory strain	–	<0.25	<0.25	0.125	<1	<1	<1	<4	<2	<1	<0.5	0.25	0.023	0.125	0.047

*KPC, *Klebsiella pneumoniae* carbapenemase; CTX, ceftriaxone; CAZ, ceftazidime; FEP, cefepime; AZT, aztreonam; TZP, piperacillin tazobactam; AMK, amikacin; GEN, gentamicin; CIP, ciprofloxacin; LFX, levofloxacin; IMI, imipenem; MER, meropenem; ETP, ertapenem; TGC, tigecycline; COL, colistin.

†Susceptibility testing was performed by Vitek-2 (bioMérieux, Marcy-l'Etoile, France), unless stated otherwise.

‡MICs of carbapenems were tested by agar dilution. MICs <0.5 mg/L were determined by Etest (AB Biodisk, Solna, Sweden).

§MICs of colistin and tigecycline were determined by Etest.

¶Eco2-T that acquired the KPC-3-encoding plasmid from Eco2.

#Kpn1-T that acquired the KPC-3-encoding plasmid from Kpn1.

**The recipient *E. coli* strain used in the transformation experiments.